

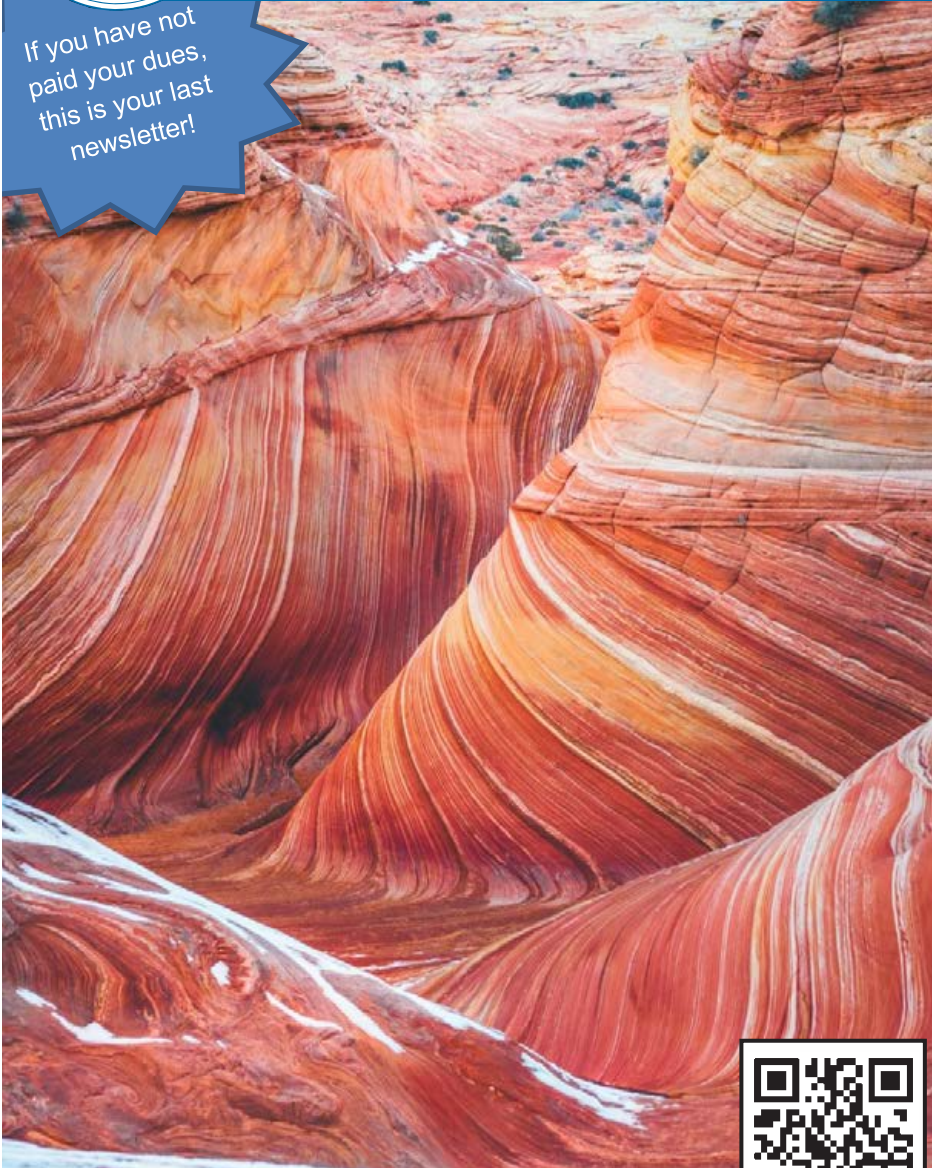


# Shreveport Geological Society **NEWSLETTER**

Volume 65, No. 2

October 2020

If you have not  
paid your dues,  
this is your last  
newsletter!



**Alluvial Stacking Patterns p. 9**  
**LA & TX Permits p. 15**



SGS1.ORG

*Message  
from*



*the  
President*

*This* year rages on as Laura, Marco, and Sally caused a third (1/3) of the Gulf Coast's offshore oil production and 25% of its gas production to be shut-in. Hurricane Laura has devastated the Lake Charles communities and the surrounding areas. Many neighborhoods remain without electricity weeks after the storm and others face months before they will be able to rebuild their home. Natural gas service companies are stepping up and delivering high capacity, natural gas generators to powerless areas. Locally, the Department of Homeland Security re-purposed close to five dozen new campers at the Lake Bistineau State Park self-quarantine station to serve as shelter for hurricane evacuees. It is our sincere hope that these communities will be spared by what seemed to be a defunct tropical system that has come back to life; Tropical Storm Beta's path continues to veer toward the Louisiana Gulf Coast.

We are nearing the end of the predetermined 2020 hurricane names, wildfires rage in Oregon and California, and the US National Weather Service works to confirm (with the assistance of disputing other higher records from early in the 1900's) that the 130°F recorded in Death Valley on August 16th, 2020 is the highest temperature ever recorded on Earth. It should come as no surprise that climate change will be a major topic during the upcoming presidential debates. The Biden/Harris ticket has conveyed their opposition to the use of fossil fuels and the fracking method the industry uses to extract hydrocarbons; Biden went as far as to say his administration would "make sure it's eliminated". The Trump campaign maintains that the

industry's jobs associated with fracking are critical to the economies of the petroleum-rich states. With the recent passing of Justice Ruth Bader Ginsburg, President Trump finds himself with a third Supreme Court vacancy to fill, and, with the election less than two months away, a fight over a replacement's nomination looms. This battle of the nomination process and the grind of the final stretch to election day will likely fit well into the year 2020.

Our first monthly meeting of the year was a great success. We saw a strong turnout of members who opted to attend our Petroleum Club luncheon in person and imbibe Greg Salter's "Is It the Rock or the Frac?" presentation. There was also an equally large crowd of members who were able to join us remotely through Zoom. Everyone's participation was greatly appreciated. Ian Byram's coordination was critical to pulling off the new, digital arrangement and he deserves to be commended for its success.

The ALTAPL-SGS Golf Tournament is quickly approaching; I hope to see many of our members there. Finally, our annual Geology & Wine dinner is approaching in November. Please, see the newsletter for more details.

Moving forward,  
Matthew Chumley

Join our group on

**LinkedIn**

Keep in Touch

through the Shreveport Geological  
Society LinkedIn Group.



The rock kit is ready  
(*pictured left*).  
E-mail Maps in Schools Chairman  
Matthew Chumley at  
[mchumley@naguss.com](mailto:mchumley@naguss.com)  
to give a talk with the kit and  
present a geologic map to a class  
of future geoscientists.

# Faithful Friends 2019 - 2020

Ralph Richardson

Gerard Associates

Matthew Chumley

David Billingsley

Alan Schlichtemier

Maurice Birdwell

John E. Atkins

Louise Pearce

Sugar Creek Producing Company

Milestone Energy, LLC

Grigsby Petroleum, Inc.

Windell Phillips

Marlin Exploration, LLC

ALTECT Environmental  
Consulting, LLC

William Downs

Zach Gray

Mark Schroeder

Stratagraph, Inc.

Johnnie P. Wanger

Mike Rogers Drilling Company, Inc.

T.W. McGuire & Associates, Inc.

Geological Drafting Consultants, Inc.

Bivins Energy Corporation

Craig C. Barclay

Earl Raborn

Palmer Petroleum, Inc.

Ber-Ex-Co

JM Exploration Co., LLC

Oden & Associates, LLC

Steve White

Joe White, Jr.

Arthur H. Trowbridge

Donner Properties, LLC

David Williamson

John Watkins

Bill Meaney

Hill Geophysical Consulting

Cypress Operating

Scott D. Stroud

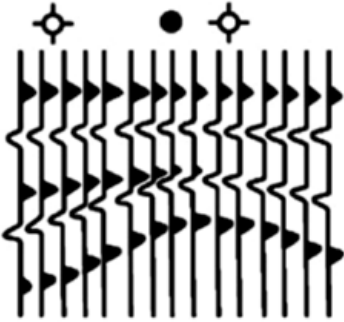
To be a Faithful Friend for 2020-2021, please contact Sarah Wilkes.

## Invest in the Future

You can **donate** to the SGS Scholarship Fund online at [SGS1.org](https://SGS1.org) or by writing a check to the SGS with "Scholarship" in the memo line, and you may include an **"in memory of"** or **"in honor of"** note as well.

Mail to: Shreveport Geological Society,  
P.O Box 750, Shreveport, LA 71162.

# Hill Geophysical Consulting



**Kevin B. Hill**

*Integrating Geophysical Technology  
with Geology*

**What's Under Your  
Feet? Find out:  
HILLGEO.COM**



415 TEXAS ST., SUITE 200  
SHREVEPORT, LA 71101

**318.221.3329**  
**kevin@hillgeo.com**



## Camterra Resources

### Main Office

2615 East End Blvd. South  
Marshall, Texas 75672  
Telephone: (903) 938-9949  
Fax: (903) 935-0521

### Dallas Office

100 Crescent Court  
Suite 1800  
Dallas, TX 75201  
Telephone: (214) 310-0512

[www.camterra.com](http://www.camterra.com)

Chief Executive Officer: Zach Carlile

President: Paul Marchand

Land Manager/General Counsel: Allen Staggers

Asst. General Counsel: Pam Johnson

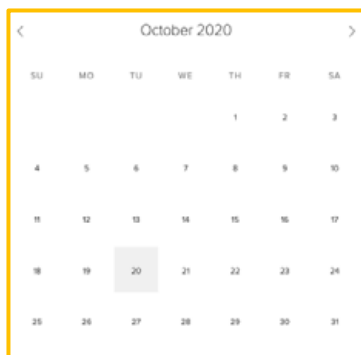
Director of Operations and Engineering: Jim Larkin

Sr. Landman: Jason Derebery

Landman/Gas Marketing/Regulatory: Josh Searle

Seeking Opportunities in Texas, Louisiana, Arkansas, Mississippi, and New Mexico

# Calendar of Events



View this interactive calendar at [SGS1.org](https://www.sgs1.org)

October 16

RSVP for the monthly meeting

October 20

Monthly Meeting

Dr. Stacy Atchley presents

“The Application of Alluvial Stacking Patterns to  
One-Dimensional Sequence Stratigraphy”

In-person 11:30 a.m. - 1 p.m.; Petroleum Club 15th Floor

Virtual 12:00 p.m. - 1 p.m. Zoom

November 20

Annual Geology and Wine Dinner Meeting

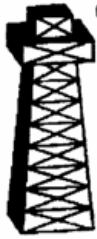
**On the Cover:** “Scenic Photo of Grand Canyon During Daytime” by Ian Beckley, stock photo courtesy of Pexels.com.

**Interior Art:** Page 1 “Saturn’s Stormy Weather” (*detail*) by Christine Bailey. Courtesy of the Bailey Gallery, online at [bailey-gallery.com](https://www.bailey-gallery.com).  
Page 7 “Blue Ridge” (*detail*) by Mary Virginia Hill, now showing at the Bailey Gallery through October 31.

Got news? Geology photos for the cover? Meeting page art?  
Email it to the editor today: [1RachelMcNerney@gmail.com](mailto:1RachelMcNerney@gmail.com)

WHEN IT HAS  
TO BE DONE  
FAST!

400 TRAVIS ST.  
SUITE 1606  
S'PORT, LA  
71101



COMPUTER  
MAPPING FOR  
THE OIL & GAS  
INDUSTRY.  
COLOR PLOTTING  
AND DIGITIZING.

JOHN  
HARRELL,  
OWNER  
ANDY  
CARDIN,  
DRAFTSMAN

PHONE

**221-7780**



**skrivanos**  
**engineering, inc.**

# The October Meeting

*Make your*

**RESERVATION**

**Stacy Atchley**

presents

“The Application of Alluvial Stacking Patterns to  
One-Dimensional Sequence Stratigraphy”

**Tuesday, October 20**

**Virtual**

12:00 p.m. Zoom

\$10

**In-Person**

11:30 a.m. Petroleum Club of Shreveport

\$20 (Children 10 and under \$8)

We encourage members to invite guests, spouses, and  
friends to any of our meetings.

If you'd like a seat, kindly **RSVP**  
by **Friday, October 16** at [SGS1.org](http://SGS1.org)

Name: \_\_\_\_\_

I will bring \_\_\_ guest(s): \_\_\_\_\_





# PALMER PETROLEUM, INC.

Exploration and Development • Operations • Oil and Gas Investments

330 Marshall Street, Suite 1200  
Shreveport, Louisiana 71101

Phone: (318) 222-0517

[www.palmerpetro.com](http://www.palmerpetro.com)

Fax: (318) 424-3256



# Paragon

P R E S S

**DESIGN PRINT MAIL**

**318-868-3351**

**[www.ParagonPress.net](http://www.ParagonPress.net)**

# Stacy Atchley

Stacy Atchley received both his B.S. and M.S. degrees from Baylor University during the 1980s and Ph.D. from the University of Nebraska, Lincoln in 1990. Upon graduation he worked for seven years for Exxon Company, U.S.A., Exxon Exploration, and Exxon Production Research. Since his time at Exxon, Dr. Atchley has served (and currently serves) as director of the Applied Petroleum Studies (APS) program at Baylor University. Within the APS program, Dr. Atchley has directed applied student research projects in the Anadarko, Permian and Alberta Basins related to both production optimization and regional exploration assessment.



## Abstract

### **“The Application of Alluvial Stacking Patterns to One-Dimensional Sequence Stratigraphy”**

*M*odern sequence-stratigraphic theory has its foundation in the works of L.L. Sloss and W.C. Krumbein (1940s to 1960s) and several Exxon researchers (1970s to 1990s). These works largely focus on the nature and origin of sedimentary cycles within marine stratal successions. Since that time, sequence-stratigraphic concepts have evolved to include the analysis of terrestrial strata. Historically, the recognition of unconformity-bounded cyclic stratal units (such as sequences) has relied upon the geometric relationships of strata, i.e., onlap, toplap, truncation and downlap, within two- and/or three-dimensional outcrop or subsurface successions. Oftentimes, however, outcrops or boreholes are isolated, and do not preserve these diagnostic stratal relationships. In such instances, documentation of changes in the vertical succession of strata, rather than lateral, may allow reconstruction of the cyclic accommodation history and placement of associated bounding discontinuities. This technique, referred to as "stacking pattern" analysis, was originally developed for shallow-marine carbonate successions. More recently, the stacking pattern methodology has been similarly applied to alluvial successions, and takes into account the unique processes of terrestrial deposition and



## MILESTONE ENERGY, LLC

Oil & Gas Exploration and Development

**Joseph A. Lott**

Geologist / Managing Partner

**Zach Kelly**  
Geologist

**Zach McDonald**  
Geologist

**Thomas A. Giles**  
Land Manager

333 Texas Street, Suite 516  
Shreveport, Louisiana 71101  
jlott100@bellsouth.net

Office: 318.212.0470  
Fax: 318.212.0469

- Looking for Prospects
- Geophysical Consultant
- Landmark Graphics Corp. Software
- Synthetic Seismograms, modeling and cross sections



- Digitizing capability
- 2-D & 3-D Seismic Acquisition, Processing & Interpretation
- SeisVision 2-D & 3-D interpretation and mapping software

**Bobbye Ben Taylor - President**

O: 120 S Broadway, Suite 102  
Tyler, Texas 75702  
Mobile: (903) 521-3182

H: 7130 Holly Square Court  
Tyler, Texas 75703  
Email: taylor@webfoxmail.com

### LOOKING FOR PROSPECTS

*Let me tailor your geophysical needs.*

## HALLIBURTON

Do you require an integrated approach to total well construction, formation evaluation, and optimized production? Make the jump to our team. We have the best local people for designing your well, performing state of the art formation evaluation, and planning and executing your completion.

**Logging & Perforating  
Production Enhancement (Stimulation)**

**Cementing  
Security Bits  
Tools, Packers, & TCP  
Coli Tubing Services**

**Shreveport Sales 318-673-4400  
Tyler sales 903-581-5263  
Kilgore Operations 1-800-654-6926**



[www.lmkr.com](http://www.lmkr.com)



**Jeremy Stuhr**

Account Executive

jestuhr@lmkr.com  
P : +1 281 848 3319  
C : +1 346 313 5377  
F : +1 281 879 0135



LMK Resources Inc.  
6051 North Course Drive Suite 300  
Houston, TX. 77072 USA

pedogenesis. The most conspicuous, and fundamental cyclic stratal unit recognized within alluvial settings are fluvial aggradational cycles (FACs). FACs are meter-scale, typically fining-upwards successions that have a disconformable lower boundary and an upper boundary that either has a paleosol weathered into it, or is disconformably overlain by the succeeding FAC without a paleosol. FACs are thought to represent sediment accumulations during channel avulsion events that are subsequently weathered during the following period of channel stability. A thick succession of FACs indicates sediment accumulation during a prolonged episode of accommodation gain. Variations in the rate of accommodation gain (and loss) are interpreted to result in the organization of FACs into alluvial sequences, and longer period composite sequences. Episodes of base-level rise result in relatively rapid rates of alluvial aggradation and less developed and more poorly-drained paleosols. Associated FACs are thicker than average and transition from initially lower sinuosity-, higher-competence alluvial systems to comparably higher sinuosity, lower competence channel deposits. As base-level rise decelerates and initially falls, paleosols become increasingly well-developed and better drained, and FACs are thinner than average and transition to even lower competence, higher sinuosity channel sandstones that are more extensive due to prolonged channel migration under low accommodation conditions. During base-level fall, the incisement of alluvial valleys produces sequence boundaries that are infrequently flooded across interfluvial areas. FACs across interfluvial positions are much thinner than average and are characterized by the most well-developed and best-drained paleosols.

Application of the alluvial stacking pattern methodology is demonstrated within three case studies. Case study 1 from Big Bend National Park, Texas, considers a latest Cretaceous to earliest Tertiary passive margin, coastal plain succession, and correlates alluvial sequences and associated climate and ecosystem changes to eustatic sea level oscillations. Case study 2 from northern and northeastern New Mexico, documents a Late Triassic foreland basin succession where tectonically-induced accommodation events are correlated between isolated outcrop successions that are 200 km apart. Case study 3 from central New York, demonstrates how stacking pattern analysis allows correlation of a Middle Devonian alluvial composite sequence with equivalent regressive-transgressive marine strata along a convergent plate boundary.



 **Jerry W. Taylor**  
Consulting Geologist, LLC

17377 LAUREN DRIVE  
PRAIRIEVILLE, LA 70769

1-(225)-287-8342

JWTGEOLOGY@GMAIL.COM

WWW.JWTGEOLOGY.COM

**R. LACY /  
CRAIN ENERGY**  
*Oil and Gas Investments  
Exploration and Development*

222 EAST TYLER STREET  
LONGVIEW, TX 75601  
903-758-8276 (O)

**Chris Bresch**  
*V.P. Exploration*  
cbresch@rlacy.com

**Hunter Brumble**  
*Staff Geoscientist*  
hbrumble@rlacy.com

**Scott Caswell**  
*Sr. Geophysicist/Geoscientist*  
scaswell@rlacy.com

**Sklar**  
Exploration Company LLC

Address: 5395 Pearl Prkwy, Ste. 200  
Boulder, CO 80301  
Telephone: (303) 541-1559  
Fax: (303) 443-1551

&

Address: 401 Edwards St., Ste. 1601  
Shreveport, LA 71101  
Telephone: (318) 227-8668  
Fax: (318) 227-9012

Operating in the MAFla, ArkLaTex,  
and WY

**MUSLOW  
OIL & GAS, INC.**

330 Marshall Street  
Suite 628  
Shreveport, LA 71101

**Eric Weiss**  
*President*

(318) 221-8694  
Fax: (318) 227-2106



# LOUISIANA BOARD OF PROFESSIONAL GEOSCIENTISTS

## Geoscientist Licensing in Louisiana

### Did you know?

When you attend a monthly Shreveport Geological Society meeting, you earn one hour of continuing education credit for your LBOPG license. This is a simple and enjoyable way to get your hours! You can also find links to continuing education ethics credit courses at <https://sgs1.org/continuing-education/>.

### Ready to track your CE hours?

Visit the LBOPG website today to download your continuing education log template

[lbopg.org/resources/continuing-education](http://lbopg.org/resources/continuing-education)

A	B	C	D	E	F	G	H	I	J	K	L	
Name:				PG License #:			Renewal Date:					
Date	Code*	Activity Title		Instructor	Sponsor Organization Name		Location		Credits			
									Time	CEU	PDH	
										Total PDH claimed this renewal period:		0
										PDH carry over from previous year claimed for this report:		
										Total PDH claimed to meet minimum requirements:		0
										PDH to be carried over to next year's report:		
Audits will be conducted randomly and/or as needed to confirm CE activities each year.												
It is your responsibility to collect and maintain proof of attendance and completion of CE activities in case an audit is called.												
*Code			Conversion of =	PDH		Minimum hrs. to renew	Maximum hrs. Allowed/Period					
Participant Credit	P		Each Direct Hour =	1		14 Geoscience Credits	Society Meetings					12
Instructor Credit	I		CEU, Papers, etc.=	10		1 Ethics Credits	Self directed Coursework					5
Authorship Credit	A		College Qtr. Hr.=	10		15 Total	Authorship - Paper					10
Meeting Credit	M		Semester Hour =	15			Authorship - Book					45
Ethics Credit	E		Instructor =	3XPDH								
This form was intended to be a one (1) letter size page, i.e. one (1) years record of CE activity or 15 PDH.												
It is recommended that additional data be entered into a second (or third, etc.) worksheet in this spread sheet workbook.												
An entire (blank) form can then be copied into the new worksheet and the sheet tab named as the report year.												
This workbook has two (2) new sheets included as examples so you can start the process of recording your CE activity.												

**Kingwood Exploration, LLC**  
**Oil & Gas Exploration**  
**and Production**



**Kurt M. Ley**

Exploration Manager & Partner

**Robert E. Braswell**

Engineering/Operations Manager & Partner

416 Travis St., Suite 1100  
Shreveport, LA 71101

Phone: 318-946-8585  
Fax: 318-946-8287

kurt.ley@kingwoodexploration.com  
robert.braswell@kingwoodexploration.com



*Established by G.M. Anderson*

**333 TEXAS ST., SUITE 2020**

**SHREVEPORT, LA 71101-5357**

**Phone: (318) 227-2000**

**Fax: (318) 425-5935**



- ★ Milam, TX
- ★ Many, LA

**The Horizontal Specialists!!**

We work with the greatest companies  
in the world, please give us a call  
to see what we can do for you!!

**Joe Eidson 318-623-5077**

**Michael Danos 318-332-7673**

P. O. Box 1209, Many, LA 71449

**Security Exploration, Inc.**

8509 Line Avenue  
Shreveport, LA 71106



J. Stafford Comegys  
President

Donna Walker  
Geologist

Barbara Lyles  
Office Manager

**OIL & GAS EXPLORATION**

**Tel: (318) 222-1066**

**Fax: (318) 222-4932**

# Monthly Permits – August 2020

*Provided by ABCD GIS Mapping*

## Texas Permits

AppDate	API	Operator	County	Purpose	TD
8/7/20	36538430	SABINE OIL & GAS CORPORATION (742143) ROCKCLIFF ENERGY OPERATING LLC	PANOLA	New Drill	12300
8/7/20	20335429	(722890) ROCKCLIFF ENERGY OPERATING LLC	HARRISON	New Drill	13000
8/7/20	20335430	(722890) ROCKCLIFF ENERGY OPERATING LLC	HARRISON	New Drill	13000
8/7/20	20335431	(722890) ROCKCLIFF ENERGY OPERATING LLC	HARRISON	New Drill	13000
8/12/20	36538565	(722890) ROCKCLIFF ENERGY OPERATING LLC	PANOLA	New Drill	13000
8/12/20	36538570	(722890)	PANOLA SAN	New Drill	13000
8/14/20	40530724	AETHON ENERGY OPERATING LLC (008555)	AUGUSTINE	New Drill	13100
8/14/20	40134300	BUFFCO PRODUCTION INC. (106406) T W CLEMONS OPERATING CO., LLC	RUSK	Recompletion	10816
8/18/20	20334563	(834248) T W CLEMONS OPERATING CO., LLC	HARRISON	Recompletion	6950
8/18/20	20335103	(834248)	HARRISON	Recompletion	6906
8/19/20	40135460	SABINE OIL & GAS CORPORATION (742143)	RUSK	New Drill	11700
8/19/20	40135461	SABINE OIL & GAS CORPORATION (742143) ROCKCLIFF ENERGY OPERATING LLC	RUSK	New Drill	11700
8/21/20	36538568	(722890) ROCKCLIFF ENERGY OPERATING LLC	PANOLA	New Drill	13000
8/21/20	36538371	(722890) ROCKCLIFF ENERGY OPERATING LLC	PANOLA	New Drill	13000
8/21/20	36538373	(722890)	PANOLA SAN	New Drill	13000
8/24/20	40530725	AETHON ENERGY OPERATING LLC (008555)	AUGUSTINE	New Drill	14000
8/24/20	20335432	COMSTOCK OIL & GAS, LLC (170038) ROCKCLIFF ENERGY OPERATING LLC	HARRISON	New Drill	11583
8/25/20	36538573	(722890) ROCKCLIFF ENERGY OPERATING LLC	PANOLA	New Drill	13000
8/25/20	36538574	(722890) ROCKCLIFF ENERGY OPERATING LLC	PANOLA	New Drill	13000
8/25/20	36538575	(722890)	PANOLA	New Drill	13000
8/25/20	40133783	SABINE OIL & GAS CORPORATION (742143)	RUSK	Recompletion	10945
8/27/20	18381326	MIKEN OIL, INC. (566783) ROCKCLIFF ENERGY OPERATING LLC	GREGG	Reenter	3700
8/28/20	36538572	(722890) ROCKCLIFF ENERGY OPERATING LLC	PANOLA	New Drill	13000
8/28/20	36538578	(722890)	PANOLA	New Drill	13000

See map and Louisiana Permits on following pages.



# THE PETROLEUM CLUB OF SHREVEPORT

Serving delectable cuisine to the  
Shreveport Geological Society  
regular luncheon meetings.

**318-425-4251**



**David Meadows  
Manager**

Mid South Tower Bldg.  
416 Travis Street, Suite 1414  
Shreveport, LA 71101

Phone: 318-425-7617  
Fax: 318-425-1385  
Email: [jmexploration@comcast.net](mailto:jmexploration@comcast.net)

## **BRAMMER** ENGINEERING, INC.

### Services:

- Drilling
- Completion
- Construction
- Production
- HSE
- Regulatory
- Land
- Accounting
- Risk  
Management
- Information  
Systems



[www.brammer.com](http://www.brammer.com)  
318.429.2345 o • 318.429.2340 f

401 Edwards Street, Suite 1510, Shreveport, LA 71101

## **WLS CORPORATION**

**OIL & GAS  
EXPLORATION & PRODUCTION**

**Wayne L. Simpson**  
President

**Philip Davis**  
Geologist

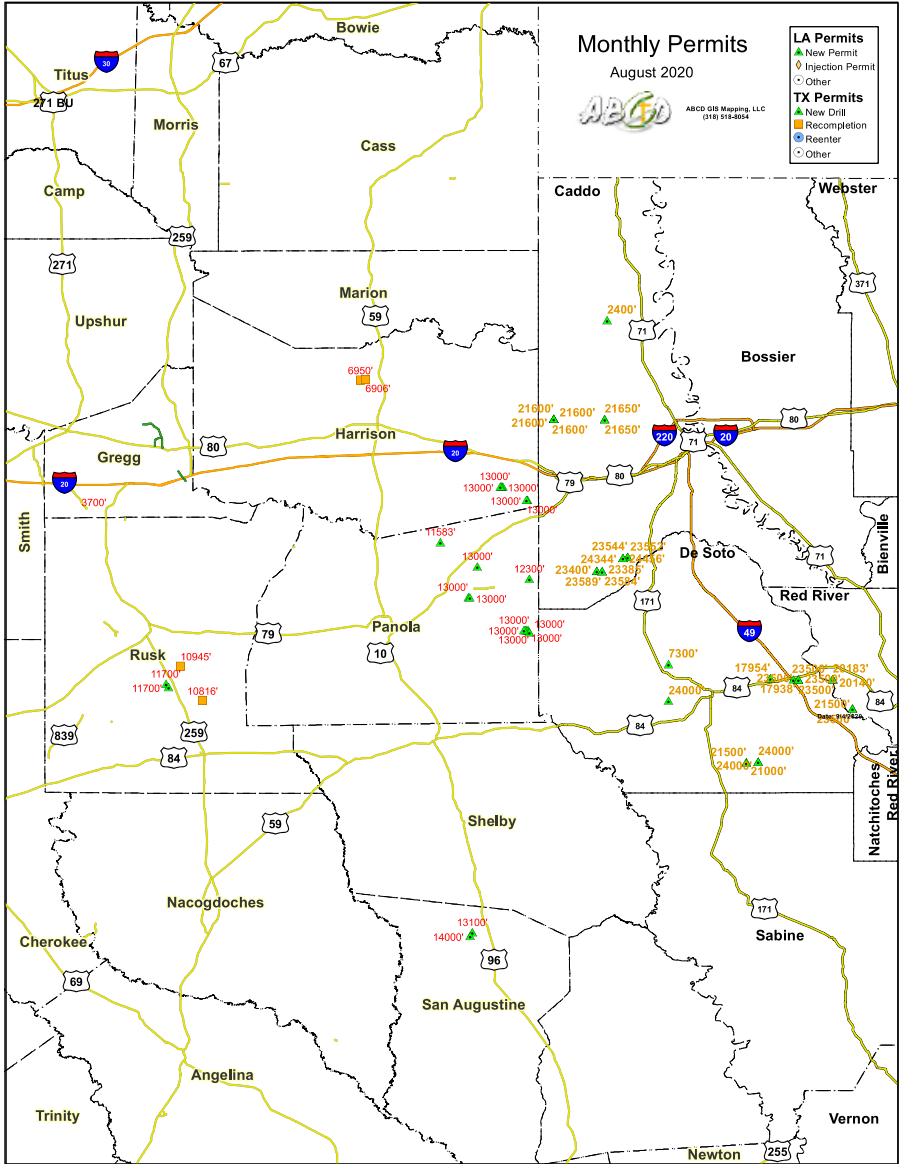
416 Travis Street, Suite 1006  
Shreveport, Louisiana 71101

Office: (318) 425-2978  
Fax: (318) 425-3166

# Monthly Permits – August 2020

Provided by ABCD GIS Mapping

## Map



See Louisiana Permits listed on following page.

## **Baldwin Madden Energy, LLC**

*Oil and Gas Property  
Acquisitions and Development*

**George A. Baldwin, Jr.**

**Gregory K. Madden**

**Christopher D. Franks**  
Senior Geologist

**Lonnie J. Shaw**  
Director of Accounting & Finance

**(318) 429-2220**

**(318) 429-2229 Fax**

333 Texas Street, Suite 1919  
Shreveport, LA 71101-3676

## **Reynolds Drilling Company, Inc.**

7591 Fern Ave., Suite 2001  
Shreveport, Louisiana 71105-5502

Phone: (318) 227-0118

Fax: (318) 227-0171

reydrill@bellsouth.net

**Terry Pat Reynolds**  
*President*

## **STROUD PRODUCTION, LLC**

333 Texas Street, Suite 860

Shreveport, Louisiana 71101-5302

Voice: (318) 429-2260

Fax: (318) 429 2255

Email: ras@spllc.com



## **SPANOIL INCORPORATED**

416 TRAVIS ST., SUITE 806  
SHREVEPORT, LA 71101  
VOICE: (318) 221-2371  
FAX: (318) 221-2372  
anthony@spanoil.com

**ANTHONY J. SPANO**  
PRESIDENT

# Monthly Permits – August 2020

*Provided by ABCD GIS Mapping*

## Louisiana Permits

County	WellSN	WellName	Permit Date	Depth	Organization
CADDO	252406	GAMM R	8/13/20	2400	MARK SEIFER
CADDO	252418	HA RA SU77;MAIDEN29&32-15-15HC	8/18/20	23589	CHESAPEAKE OPERATING, L.L.C.
CADDO	252419	HA RA SU77;MAIDEN29&32-15-15HC	8/18/20	23400	CHESAPEAKE OPERATING, L.L.C.
CADDO	252420	HA RA SU77;FERNS 29&32-15-15HC	8/18/20	23584	CHESAPEAKE OPERATING, L.L.C.
CADDO	252421	HA RA SU77;FERNS 29&32-15-15HC	8/18/20	23385	CHESAPEAKE OPERATING, L.L.C.
CADDO	252426	HA RA SUK;BROWN 14&23-15-15 HC	8/19/20	23552	CHESAPEAKE OPERATING, L.L.C.
CADDO	252427	HA RA SUK;BROWN 14&23-15-15 HC	8/19/20	23544	CHESAPEAKE OPERATING, L.L.C.
CADDO	252430	HA RA SUEE;RWOOD 16-21 H	8/21/20	21600	TRINITY OPERATING (USG), LLC
CADDO	252431	HA RA SUEE;RWOOD 16-21 H	8/21/20	21600	TRINITY OPERATING (USG), LLC
CADDO	252432	HA RA SUDD;RWOOD 9-4 H	8/21/20	21600	TRINITY OPERATING (USG), LLC
CADDO	252433	HA RA SUDD;RWOOD 9-4 H	8/21/20	21600	TRINITY OPERATING (USG), LLC
CADDO	252434	HA RA SUFF;T&A LLC 8-5 H	8/21/20	21650	TRINITY OPERATING (USG), LLC
CADDO	252435	HA RA SUGG;T&A LLC 9-4 H	8/21/20	21650	TRINITY OPERATING (USG), LLC
CADDO	252437	HA RA SUK;CLH 14&11&2-15-15HC	8/25/20	24456	CHESAPEAKE OPERATING, L.L.C.
CADDO	252438	HA RA SUK;CLH 14&11&2-15-15HC	8/25/20	24344	CHESAPEAKE OPERATING, L.L.C.
DE SOTO	252400	HA RA SU68;SCALES HEIRS36-25HC	8/5/20	23500	VINE OIL & GAS LP
DE SOTO	252404	RICHARDSON 27	8/12/20	7300	FONTAINEBLEAU OPERATING, LLC
DE SOTO	252414	JUR RA SUA;MG TRUST 29-20-17HC	8/14/20	24000	GEP HAYNESVILLE, LLC
DE SOTO	252415	JUR RA SUA;MG TRUST 29-20-17HC	8/14/20	24000	GEP HAYNESVILLE, LLC
DE SOTO	252422	HA RA SUF;NABORS 33-13-12 H	8/18/20	17954	CHESAPEAKE OPERATING, L.L.C.
DE SOTO	252423	HA RA SUF;NABORS 33-13-12 H	8/18/20	17938	CHESAPEAKE OPERATING, L.L.C.
DE SOTO	252424	HA RA SU68;SABINE 36-25 HC	8/19/20	23500	VINE OIL & GAS LP
DE SOTO	252425	HA RA SU68;SABINE 36-25 HC	8/19/20	23500	VINE OIL & GAS LP
DE SOTO	252428	JUR RA SUF;CREST 30-19 HC	8/19/20	21000	VINE OIL & GAS LP
DE SOTO	252429	JUR RA SUF;CREST 30-19 HC	8/19/20	21500	VINE OIL & GAS LP
DE SOTO	252436	HA RA SUE;BOISE 15-10 HC	8/25/20	24000	COMSTOCK OIL & GAS--LA, LLC
DE SOTO	252439	HA RA SU68;SABINE 36-25 HC	8/25/20	23500	VINE OIL & GAS LP
RED RIVER	252395	HA RB SU72;TRACY 3-10 HC	8/3/20	20183	AETHON ENERGY OPERATING LLC
RED RIVER	252396	HA RB SU72;TRACY 3-10 HC	8/3/20	20140	AETHON ENERGY OPERATING LLC
RED RIVER	252397	HA RB SU72;TRACY 3-10 HC	8/3/20	20199	AETHON ENERGY OPERATING LLC
RED RIVER	252403	HOSS RA SUU;ELMWOOD LAND 26	8/12/20	7500	EGH OPERATING, LLC
RED RIVER	252416	HA RB SU93;CLARK 24-13 HC	8/14/20	23500	BRIX OPERATING LLC
RED RIVER	252417	HA RB SU93;CLARK 24-13 HC	8/14/20	21500	BRIX OPERATING LLC

See Map and Texas Permits listed on previous pages.



**Shreveport Petroleum Data Assn., Inc.**

333 Texas Street, Suite 900

Shreveport, LA 71101

(318) 429-2237

Fax (318) 429-2441

Website : [www.spdalogs.org](http://www.spdalogs.org)

[spda@spdalogs.org](mailto:spda@spdalogs.org)

Cindy Shepherd

Manager



**Bobby E. Jelks**  
*President*

**Faith N. Gilbert**  
*CFO*

P. O. Box 7665  
Shreveport, LA 71135-7665

**Edward Yarborough**  
*Exploration Manager*

Phone: (318) 221-2688

Fax: (318) 459-2935

**James Light**  
*Land Manager*



**GEOVENTURES™**

**Ashley Garcia**

*Assistant Program Manager*

Main +1 713 789 7250

Direct +1 281 781 1005

Fax +1 713 789 7201

Mobile +1 281 239 4576

[ashley.garcia@iongeo.com](mailto:ashley.garcia@iongeo.com)

2105 City West Blvd., Ste. 900

Houston, TX 77042-2837 USA [iongeo.com](http://iongeo.com)



**L. CHRIS JOHNSON**  
*Manager*

2650 Fairfield Ave  
Shreveport, LA 71104  
BUS:(318) 222-6652  
FAX: (318) 222-6673  
[cjohnson@jerlic.com](mailto:cjohnson@jerlic.com)

**GRIGSBY PETROLEUM, INC.**

Oil & Gas Exploration  
and Production

333 Texas St., Suite 2285

Shreveport, LA 71101

Phone (318) 425-5306

Fax (318) 425-3733

Office Phone  
(318) 222-7123

Residence Phone  
(318) 925-2348

**David L. Billingsley, Jr.**  
Certified Petroleum Geologist

400 Travis Street, Suite 1230  
Shreveport, LA 71101  
[DLBJR1@aol.com](mailto:DLBJR1@aol.com)

Cell Phone  
(318) 426-4320



OIL AND GAS

**DIANA L. CHANCE**  
MANAGING DIRECTOR

P. O. Box 1346 SHREVEPORT, LA 71164  
(318) 227-2131 • FAX: (318) 222-5832

CELL: (318) 347-8848

[WWW.DONNERPROPERTIES.COM](http://WWW.DONNERPROPERTIES.COM)

# In Memoriam: John T. Palmer



**J**ohn T. Palmer died on Monday, August 31, 2020 at his home in Shreveport, LA. A memorial service will be held at a later date due to Covid-19 restrictions.

John was born on February 21, 1928 in Bethlehem, Pennsylvania, where he received his Bachelor's degree in geology from Lehigh University in 1948. He married Marilyn Grube in 1949 and they moved to Shreveport, Louisiana.

He began his career with Standard Oil and Gas Company as a scout-geologist in Shreveport, Louisiana. He joined Lyons Petroleum, Inc. in 1951 where he was responsible for several new field discoveries and field extensions in some 25 separate areas across East Texas, North Louisiana and South Arkansas.

John became an independent geologist in 1970 and continued his successes in East Texas. His field discoveries continued into North Louisiana at Red Oak Lake and a significant extension of the Danville Field. He formed Palmer Petroleum, Inc. in 1977 and served as its President and Chairman of the Board where he continued to go to work until March of this year. An AAPG member for 67 years, Mr. Palmer was a Certified Petroleum Geologist and has remained active in both local and national geological organizations. He actively supported the Independent Petroleum Association of America and helped organize and served as President of the Louisiana Association of Independent Producers and Royalty Owners (LAIPRO), now LOGA. One of his proudest accomplishments was that he was one of seven geologists who founded the Shreveport Petroleum Data Association and remained a member until his death.

John was a brilliant geologist and a man known for great integrity, honesty and a witty sense of humor. He loved all sports, and had a great passion for fishing, particularly at his home-away-from home on Little Cayman Island in the Caribbean. He enjoyed playing Gin Rummy with his buddies and discussions at The Table of Knowledge, whom he frequently lunched with at the Petroleum Club, and thoroughly enjoyed the company of his Shreve Syndicate partners. He was also a member of the IRI group.

John was a generous contributor to the community. He was on the Centenary College of Louisiana Board of Trustees, Shreveport Committee of 100, past President of the Petroleum Club of Shreveport, past President of Southfield School, and The honorary recipient of The Wildcatters Association.



## Thomas C. Wyche

CERTIFIED PETROLEUM GEOLOGIST

*Horizontal & Vertical Projects*  
E.Tx., N.La., S.Ark.

333 Texas St., Suite 703  
Shreveport, LA 71101  
318.465.2944  
geo1tcw@gmail.com

LA-PG  
AAPG-CPG

## Cypress Operating, Inc.



**STEVEN A. SINGLETARY**  
**BEN ROBINSON**

*Petroleum Geologists*

Office: (318) 424-2031  
Fax: (318) 425-8140

330 Marshall Street, Suite 930  
Shreveport, LA 71101



401 Edwards Street, Suite 1200  
Shreveport, LA 71101

P.O. Box 1367  
Shreveport, LA 71164

office: (318) 222-8406  
fax: (318) 222-6061  
email: mei@marlinexploration.com

**Jon Q=Petersen**  
President

**S. Cody Lenert**  
Geologist

**Autie T. Orjias**  
V.P./Land Manager

**Ryan Q=Petersen**  
Land

**Dean Giles**  
Secretary/Treasurer

# SEI®

Seismic Exchange, Inc.

Strategic Speculative Surveys  
Geophysical Data Marketing & Management

**YouR**  
Full Service  
National  
Seismic Data  
Marketing Firm

Marketing contact:  
**Layne Williams**  
lwilliams@seismicexchange.com

DALLAS DENVER HOUSTON NEW ORLEANS TULSA

201 St Charles Ave., Suite 4300  
New Orleans, LA 70170

(D) 504-510-2508 (C) 504-458-3056

www.seismicexchange.com

You are cordially invited to the  
Twelfth Annual Shreveport Geological Society  
Geology and Wine Dinner

**Flâneur Wines of Oregon -  
Crafting Oregon Wines that Tell a Story**

November 20, 2020  
Petroleum Club of Shreveport, 16th Floor  
Reception – 6:30 p.m.  
Presentations & Dinner – 7 p.m.

With Kevin Hill, geophysicist,  
and featured guests from Flâneur Wines

The evening will include an exciting story of the turbulent geological past of Oregon and specifically the Willamette Valley wine area. The Flâneur wines will be paired with an exciting menu of northwestern cuisine.

Flâneur Wines is dedicated to creating distinct and Memorable Willamette Valley wines that tell the story of time and place with each sip.

\$90 per person includes food, wine, tax, and tip.  
Seating is limited. Reservations must be paid in advance.

Buy your tickets online now at  
[bit.ly/geowine2020](https://bit.ly/geowine2020)

Reservations can also be made by check to the  
Shreveport Geological Society  
P.O. Box 750  
Shreveport, LA 71162

Call 318-221-3329 for more information.



## **BER-EX-CO., INC.**

**Orville Roger Berg, Ph.D.**

Exploration, Exploitation  
Seismic Evaluation  
Domestic, International

400 Travis St., Suite 1612  
Shreveport, LA 71101-3108  
(318) 220-0300  
orberg@bellsouth.net

9949 Beaver Creek Drive  
Shreveport, LA 71106  
(318) 798-1748

## **GERARD ASSOCIATES, L.C.**

OIL & GAS EXPLORATION  
DEVELOPMENT AND ACQUISITIONS

**J. A. Wojtkiewicz • Charles Gerard**

625 Market St., Suite 250  
Shreveport, LA 71101  
Tel. (318) 221-0761 • FAX (318) 221-8835

### **ODEN & ASSOCIATES, LLC**

*Oil and Gas Exploration*

Phone: 318-222-2400

Fax: 318-226-0840



**ALAN SCHLICHTMIER**

*Geologist*

P.O. Box 1806  
Shreveport, LA 71166

416 Travis Street, Ste. 400  
Shreveport, LA 71101  
odenassoc@bellsouth.net



**Kalmbach  
Production Company, LLC**

**Sam Kalmbach  
Geologist**

400 Travis Street, Ste. 516 office: (318) 424-6566  
Shreveport, LA 71101 cell (318) 470-9977  
e-mail: sam.geo.kpc@gmail.com

## **BARROW-SHAVER RESOURCES COMPANY**

Oil & Gas Exploration & Development

**Scott Owen Shaver**

Managing Partner and Exploration Manager

903-593-5221 Office

903-593-1692 Fax

903-561-4711 Home

903-582-4711 Farm

903-245-4999 Mobile

977 Pruitt Place

Tyler, Texas 75703

sos-bsr@tyler.net



Drilling Contractor  
Oil & Gas Operator  
Turnkey Services  
Well Service & Workover  
Working Interest Participant

**318-992-4111**

**P. O. Box 2990, Jena, LA 71342**

**justissoil.com**

**TIM H. MARSHALL DIRCK E. WUELLNER**

**MARSHALL-WUELLNER, INC.**

**Petroleum Geologists**

AmSouth Tower

333 Texas St., Suite 608

Shreveport, LA 71101-3671

Office: (318) 429-2250

Fax: (318) 429-2251

**Mike Rogers Drilling Co., Inc.**

Drilling & Interest Participation

**MIKE ROGERS, PRESIDENT**

**CRAIG ROGERS, VICE PRESIDENT**

Office: 870-234-2356 • Fax: 870-234-7487

1708 N. Vine Street • P. O. Box 126 • Magnolia, AR 71754  
email: mrdc1981@gmail.com

# Like what you see?

Fill out and mail in this form or find it online at [SGS1.org](http://SGS1.org).

You can renew online instead  
of filling out this card!  
★ [www.sgs1.org](http://www.sgs1.org) ★

Active \$25 / yr	
Associate \$25 / yr	
Honorary \$0 / yr	
Student \$5 / yr	
Optional Donation SGS Scholarship Fund	
Optional Donation Faithful Friends	
<b>Total Payment</b>	

NAME (Please Print) \_\_\_\_\_

Check if new applicant or change of address.

SHREVEPORT GEOLOGICAL SOCIETY, P.O. BOX 750 • SHREVEPORT, LA 71162

DATE \_\_\_\_\_

APPLICANT OR MEMBER PLEASE TYPE OR PRINT

LAST NAME	FIRST	INITIAL	NICKNAME	
COMPANY		POSITION OR TITLE		
COMPANY MAILING ADDRESS	CITY	STATE	ZIP	COMPANY PHONE
HOME ADDRESS	CITY	STATE	ZIP	HOME PHONE
FAX NUMBER	E-MAIL ADDRESS		CELL PHONE	
SCHOOL	DEGREE	MAJOR	YEAR	

PROFESSIONAL AFFILIATIONS    AAPG     GSA     SEG     SEPM     AIME     SPWLA   
 AGI     PS     AGI     SIPEs     SPE     OTHER \_\_\_\_\_

OUTLINE OF EXPERIENCE \_\_\_\_\_

SPOUSE'S NAME \_\_\_\_\_

PREFERRED MAILING ADDRESS  
 HOME     BUSINESS  
 EMAIL ME THE NEWSLETTER  
 (no printed copy will be mailed)

## QUALIFICATIONS FROM BY-LAWS

In order to be eligible for active membership, an applicant shall be engaged in the practice or teaching of geology or related sciences.

In order to be an associate member, an applicant shall be interested in geological science but not actively engaged in the practice or teaching of geology or related sciences.

### TO THE EXECUTIVE BOARD:

I hereby apply for  ACTIVE     ASSOCIATE membership in SHREVEPORT GEOLOGICAL SOCIETY and pledge myself to abide by its Constitution and By-laws.

Date: \_\_\_\_\_ Signature: \_\_\_\_\_

SPACE BELOW TO BE USED FOR PROCESSING ONLY

#### Membership Committee

Received: \_\_\_\_\_

Approved for:     Active  
 Associate  
 Student

#### Executive Board

Approved: \_\_\_\_\_

SECRETARY

Date: \_\_\_\_\_



# JON E. SAYE

**PETROLEUM GEOLOGIST**

Office: 318-221-4504  
Fax: 318-221-4516  
Cell: 318-458-1515

1015 Mid South Twr. • P. O. Box 137  
Shreveport, LA 71161  
[jsaye@prodigy.net](mailto:jsaye@prodigy.net)

## COUTRET & ASSOC., INC.

**Petroleum Reservoir Engineers**  
Property Evaluation, Reservoir Engineering  
Fluid Injection, Property Management

**Louisiana Tower**  
401 Edwards Street  
Shreveport, LA 71101

**Telephone: (318) 221-0482**  
**Fax: (318) 221-3202**  
**E-mail: [rmcgowen@coutret.com](mailto:rmcgowen@coutret.com)**



**GEOVENTURES™**

**Alvin Rowbatham**  
Sales Manager

Main +1 713 789 7250  
Direct +1 281 781 1005  
Fax +1 713 789 7201  
Mobile +1 832 372 2366  
[alvin.rowbatham@iongeo.com](mailto:alvin.rowbatham@iongeo.com)

2105 City West Blvd., Ste. 900  
Houston, TX 77042-2837 USA [iongeo.com](http://iongeo.com)



**Delta-T**  
**Geophysical**  
**Consulting, Inc.**

**Comprehensive Geophysical Services**

- Kingdom Suite 2d/3d pak
- Geographix
- GMA
- Neurlag
- Mesa 3-D Design
- Digirule

**Woodie Huffman, CEO**

401 Edwards Street, Suite 826  
Shreveport, LA 71101-5510  
Phone: (318) 221-0414  
Fax: (318) 425-0688  
Email: [delta@bellsouth.net](mailto:delta@bellsouth.net)

# Williamson

**OIL & GAS, INC.**

**Oil & Gas Development**



Office: (318) 221-2923 400 Travis Street  
Fax: (318) 221-3488 Suite 1410  
Email: [bob@williamsonogi.com](mailto:bob@williamsonogi.com) Shreveport, LA 71101

**Joe R. White, Jr.**  
Petroleum Geologist

8505 Dogwood Trail  
Houghton, LA 71037  
Cell. 318-423-9828  
Hm. 318-949-3539  
Available for Consulting

AAPG CPG #5580  
MS RPG #0097  
LA CPG #345  
[jwhite1362@aol.com](mailto:jwhite1362@aol.com)  
[Joerjr@gmail.com](mailto:Joerjr@gmail.com)

## Cowgill & Associates, L.L.C.

Oil & Gas Exploration & Production

**Stephen C. Cowgill**  
Geologist/Managing Partner

P. O. Box 72180 Office: 318.429.2170  
Bossier City, LA 71172-2180 Fax: 318.429.1170  
[cwgill@suddenlink.net](mailto:cwgill@suddenlink.net) Cell: 318.455.9516

## CSC ENERGY CORP.

*OIL & GAS EXPLORATION*

**Joel B. Chevalier**  
PRESIDENT

416 Travis Street  
Suite 507  
Shreveport, LA 71101

Mobile: (318) 469-5625  
[cscenergy@bellsouth.net](mailto:cscenergy@bellsouth.net)



*Craig C. Barclay*  
Petroleum Geologist, L.L.C.

10857 Sunrise Point Phone (318) 524-9920  
Shreveport, LA 71106 Mobile (318) 426-2536  
cbarclay1@comcast.net

**Wireline Services**

Weatherford International, Ltd.  
1101 ESE Loop, 323, Ste. 200  
Tyler, Texas 75701, USA



**Weatherford**

**Richard 'Dick' Swindell**  
Technical Sales Advisor  
Wireline & Borehole Seismic

Direct: +1.903.594.4926  
Main: +1.903.534.5243  
Fax: +1.903.939.8907  
Mobile: +1.903.530.4016  
richard.swindell@weatherford.com  
www.weatherford.com

**T. W. McGuire & Associates, Inc.**

Registered Petroleum Engineers

416 Travis St., Suite 1400  
P. O. Box 1763  
Shreveport, LA 71166  
(318) 222-0761  
(318) 222-0799 Fax

**James T. Maranto Robert T. Maranto**

**BAKER  
HUGHES**  
a GE company



**Jim Hankla**  
Sales  
Southern US

M +1 903 312 8500  
james.hankla@bhge.com



**416 TRAVIS STREET ♦ SUITE 600**  
**SHREVEPORT, LA 71101**  
**PHONE ♦ (318) 425-0101**  
**FAX ♦ (318) 425-2211**

**MORRIS NICHOLS**  
**GARY ABRAMS**  
**JOHN STROUD**  
**GEOLOGISTS**



**Joseph H. McDuff**  
*Geologist*

**351 Chapel Loop**  
**Mandeville, LA 70471**  
**985.845.9430**  
jmcduff@bellsouth.net

**DOWNNS**

ENERGY ACQUISITIONS, LLC  
OPERATING COMPANY, LLC

SHREVEPORT, LOUISIANA  
318-716-7670  
wdownns@downns-energy.com

**CAPLIS FORESTRY, LLC**

**JEFFREY W. CAPLIS**

**-CONSULTING FORESTER-**

**CELL: 318-617-9016**

**OFFICE: 318-752-3662**

**586 CAPLIS SLIGO RD.**

**BOSSIER CITY, LA 71112**

***-complete forestry services-***

- Timber Appraisals • Timber Management • Timber Cruising •
- Damage Appraisals • Tree Planting •

**B.S. LOUISIANA TECH: SCHOOL OF FORESTRY**



**Will-Drill Resources, Inc.**

**Rick Holland: Geology**  
**Bret Hardcastle: Engineering**  
**Kem Hargrove: Land**

**1915 E. 70th. Street**  
**Shreveport, LA 71105**  
**Office (318) 222-7464**  
**Fax (318) 222-7466**

***Actively seeking Oil & Gas opportunities in the Upper and Lower Gulf Coast Basin. Operated and Non-Operated. Vertical normal pressured development prospects and Acquisitions preferred.***



**Shreveport Geological Society**

P.O. Box 750 • Shreveport, LA 71162