



# Shreveport Geological Society **NEWSLETTER**

Volume 66, No. 2

October 2021

If you have not  
paid your dues,  
this is your last  
newsletter!

## LET'S DIG IN!



**VOLUNTEER AT THE MOCK DIG  
OCTOBER 2-10 + DETAILS ON P.13**

Scholarship Special Report p. 5  
New Core Tech p. 9



SGS1.ORG

# Message from



# the President

As Hurricane Ida barreled towards the Louisiana Coast in late August, it was well known that both the upstream and downstream operations in the Gulf Coast area would be affected substantially. What was not known was the extent to which these operations would be affected, or for how long. The category 4 storm made landfall on the morning of August 29, 2021, and at that point, nearly all production in the Gulf of Mexico was offline. A full week later, 80% of that production was still offline and five refineries were shutdown. Many reports are saying the Gulf Coast Region has not seen this kind of impact on oil and gas production and refining from a hurricane ever before; with the closest comparison being Katrina back in 2005. Thankfully Ida did not cause the substantial loss of life that was brought on by Katrina, but the damage to infrastructure, fuel supply, and people's livelihoods will be felt for quite some time.

Through all of this devastation, the oil markets have stayed relatively stable with prices remaining in the \$70 - \$75 per barrel range. Natural gas markets, on the other hand, are a completely different story. In April 2020 the EIA predicted natural gas prices at Henry Hub would average \$2.54 per MMBtu for 2021. At the time I am writing this, natural gas is trading at \$6.02 per MMBtu; a whopping 237% over the EIA's prediction for 2021's average. While no one knows whether these prices will hold, it is obvious that if a cold winter sets upon us in the coming months, natural gas prices will stay elevated for the foreseeable future.

COVID-19 is still running rampant in the US, and sadly our state's vaccination rates remain one of the lowest in the country. I can only hope that the surge in cases, hospitalizations, and deaths in Louisiana will change people's minds and help convince them to get the shot.

The 28th Annual ALTAPL/SGS Golf Tournament was held on Friday, September 24, 2021 and I know everyone that took part in the festivities enjoyed the cooler weather. Our first SGS Member Meeting of this season was held on September 21, 2021 and it was our best attended meeting since the beginning of the pandemic. It certainly was a breath of fresh air to see a physical room full of people versus a virtual "Zoom room" full of people. The speaker, George W. Roth, gave an excellent talk about exploring for precious and base metals in Alaska. He also gave an overview of the current and future mining operations in the state, which was quite eye opening in terms of Alaska's metal exploration potential. We are continuing to offer the speaker presentations in a Zoom format, so if you can't make it to the meetings please don't hesitate to sign up and watch via Zoom!

Michael Danos has lined up Blake Mock with Canamera Coring for our October 19, 2021 member meeting. Blake has an extensive background in both the MWD and coring fields, and I know I am looking forward to hearing him speak. The presentation will be based around core acquisition and new coring technologies.

The 45th Red River Revel is being held on October 2 – 10, 2021 and the Mock Dig is geared up and ready to go. We are always looking for volunteers to help out at the Mock Dig, so if you are willing and able, I encourage you to visit the SGS website and sign up for a volunteer spot. Carrie Salinas always does an incredible job at putting the Mock Dig together, so let's all help her out by showing our support and volunteering.

Best regards,  
Ian M. Byram

# Faithful Friends 2020 - 2021

River Rouge Minerals	Charles Gerard
Grigsby Petroleum	Anthony Spano
Sugar Creek Producing Company	Sartor-Richardson
Hill Geophysical Consulting	Wild Oak Gas Company
William Hart	Geological Drafting Consultants, Inc.
Stuart Oden	SGC Energy Consulting LLC
Jon E. Saye	Mark Schroeder
Grant E. Black	John Watkins
Matthew Chumley	William Meaney
Scott Caswell	William Downs
Arthur Trowbridge	Ber-Ex-Co, Inc.
Williamson & Associates, LLC	Milbird Resources
David Billingsley, Jr.	Prospective Oil & Gas, LLC
Steve White	Chris Franks
T.W. McGuire & Associates	Louise Pearce
Phillip Smith	Windell Phillips
John E. Atkins	Clifford Leonard

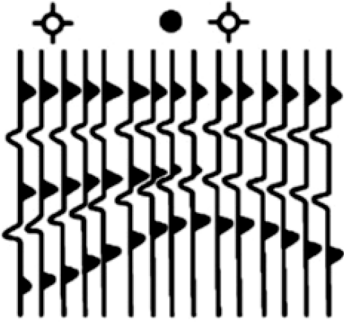
To be a Faithful Friend for 2021-2022,  
please contact Kurt Ley.

## Invest in the Future

You can **donate** to the SGS Scholarship Fund online at [SGS1.org](https://SGS1.org) or by writing a check to the SGS with "Scholarship" in the memo line, and you may include an **"in memory of"** or **"in honor of"** note as well.

Mail to: Shreveport Geological Society,  
P.O Box 750, Shreveport, LA 71162.

# Hill Geophysical Consulting



**Kevin B. Hill**

*Integrating Geophysical Technology  
with Geology*

**What's Under Your  
Feet? Find out:  
HILLGEO.COM**



415 TEXAS ST., SUITE 200  
SHREVEPORT, LA 71101

**318.221.3329**  
**kevin@hillgeo.com**



## Camterra Resources

### Main Office

2615 East End Blvd. South  
Marshall, Texas 75672  
Telephone: (903) 938-9949  
Fax: (903) 935-0521

### Dallas Office

100 Crescent Court  
Suite 1800  
Dallas, TX 75201  
Telephone: (214) 310-0512

[www.camterra.com](http://www.camterra.com)

Chief Executive Officer: Zach Carlile

President: Paul Marchand

Land Manager/General Counsel: Allen Staggers

Asst. General Counsel: Pam Johnson

Director of Operations and Engineering: Jim Larkin

Sr. Landman: Jason Derebery

Landman/Gas Marketing/Regulatory: Josh Searle

Seeking Opportunities in Texas, Louisiana, Arkansas, Mississippi, and New Mexico

# Scholarships: A Special Report

*From Ian Byram and Annie Green*

Scholarship Fund	Inception Date	Amount Awarded
Jarred Memorial Scholarship Fund	2011	\$ 8,214.00
Shreveport Geological Society Scholarship Fund	1986	\$ 20,009.00
Harvey Broyles Endowment Fund	1991	\$ 26,586.00
William G. and Mary Fee Wender Scholarship Fund	2003	\$ 80,228.00
A.W. and Tweatie Scarborough Baird Scholarship Fund	1986	\$ 243,150.00

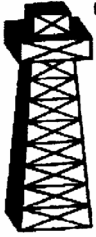
For the past 35 years, Shreveport Geological Society has been an advocate for helping future geoscientists with scholarship awards from a number of different scholarship funds. This is something that SGS is very proud of, and we would like to thank our members and benefactors for allowing us to champion this cause.

As you can see in the provided table, **SGS has awarded over \$378,000 in scholarship awards since the first fund's inception.** This money has gone to help students achieve not only their degrees, but their goals in life as well.

If you would like to help SGS continue this legacy, you may send donations of any amount to Shreveport Geological Society P.O. Box 750, Shreveport, LA 71162. Please note "SGS Scholarship Fund" in the memo section. Along with your partnership, we look forward to encouraging geoscience students through scholarship awards for generations to come.

WHEN IT HAS  
TO BE DONE  
FAST!

400 TRAVIS ST.  
SUITE 1606  
S'PORT, LA  
71101



COMPUTER  
MAPPING FOR  
THE OIL & GAS  
INDUSTRY.  
COLOR PLOTTING  
AND DIGITIZING.

JOHN  
HARRELL,  
OWNER  
ANDY  
CARDIN,  
DRAFTSMAN

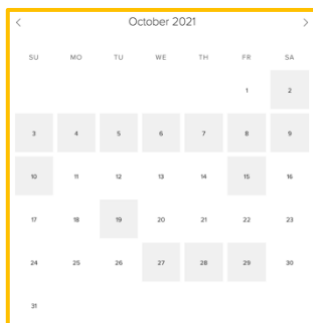
PHONE

**221-7780**



**skrivanos**  
**engineering, inc.**

# Calendar of Events



View this interactive calendar at [SGS1.org](https://www.sgs1.org)

## October 2 - 10

Volunteer at the Mock Dig at the Red River Revel

## October 15

RSVP for the monthly meeting

## October 19

Monthly Meeting

Blake Mock presents

“Core Acquisition and New Technology”

In-person 11:30 a.m. - 1 p.m.; Petroleum Club 15th Floor

Virtual 12:00 p.m. - 1 p.m. Zoom

## October 27-29

GeoGulf 2021 in Austin, TX

***On the Cover:*** Samples of what is hidden at the Mock Dig.

***Interior Art:*** Page 1 “Series in White #2” (detail) by Christine Bailey, courtesy of the Bailey Art Gallery at 214 Texas Street.

More at [Bailey-Gallery.com](https://www.bailey-gallery.com).

Page 9 “Under Water” (detail) by Jerry Wray, showing at the Louisiana State Exhibit Museum through October 8. More at [JerryWray.com](https://www.jerrywray.com).

***Got news? Geology photos for the cover? Meeting page art?***

Email it to the editor today: [1RachelMcNerney@gmail.com](mailto:1RachelMcNerney@gmail.com)





# PALMER PETROLEUM, INC.

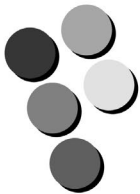
Exploration and Development • Operations • Oil and Gas Investments

330 Marshall Street, Suite 1200  
Shreveport, Louisiana 71101

Phone: (318) 222-0517

[www.palmerpetro.com](http://www.palmerpetro.com)

Fax: (318) 424-3256



# Paragon

P R E S S

**DESIGN PRINT MAIL**

**318-868-3351**

**[www.ParagonPress.net](http://www.ParagonPress.net)**



# The October Meeting

*Make your*  
**RESERVATION**

**Blake Mock**

presents

“Core Acquisition and New Technology”

**Tuesday, October 19**

**Virtual**

12:00 p.m. Zoom

\$10

**In-Person**

11:30 a.m. Petroleum Club of Shreveport

\$20 (Children 10 and under \$8)

We encourage members to invite guests, spouses, and friends to any of our meetings.

If you'd like a seat, kindly **RSVP**  
by **Friday, October 15** at [SGS1.org](http://SGS1.org)  
or by calling Mike Danos at 318-332-7673



# MILESTONE ENERGY, LLC

Oil & Gas Exploration and Development

**Joseph A. Lott**

Geologist / Managing Partner

**Zach Kelly**  
Geologist

**Zach McDonald**  
Geologist

**Thomas A. Giles**  
Land Manager

333 Texas Street, Suite 516  
Shreveport, Louisiana 71101  
jlott100@bellsouth.net

Office: 318.212.0470  
Fax: 318.212.0469

- Looking for Prospects
- Geophysical Consultant
- Landmark Graphics Corp. Software
- Synthetic Seismograms, modeling and cross sections



- Digitizing capability
- 2-D & 3-D Seismic Acquisition, Processing & Interpretation
- SeisVision 2-D & 3-D interpretation and mapping software

**Bobbie Ben Taylor - President**

O: 120 S Broadway, Suite 102  
Tyler, Texas 75702  
Mobile: (903) 521-3182

H: 7130 Holly Square Court  
Tyler, Texas 75703  
Email: taylor@webfoxmail.com

## LOOKING FOR PROSPECTS

*Let me tailor your geophysical needs.*

# HALLIBURTON

Do you require an integrated approach to total well construction, formation evaluation, and optimized production? Make the jump to our team. We have the best local people for designing your well, performing state of the art formation evaluation, and planning and executing your completion.

**Logging & Perforating**  
**Production Enhancement (Stimulation)**

**Cementing**  
**Security Bits**  
**Tools, Packers, & TCP**  
**Coli Tubing Services**

**Shreveport Sales 318-673-4400**  
**Tyler sales 903-581-5263**  
**Kilgore Operations 1-800-654-6926**



[www.lmkr.com](http://www.lmkr.com)



**Jeremy Stuhr**

Account Executive

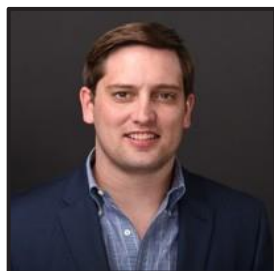
jsuhr@lmkr.com  
P : +1 281 848 3319  
C : +1 346 313 5377  
F : +1 281 879 0135



LMK Resources Inc.  
6051 North Course Drive Suite 300  
Houston, TX. 77072 USA

# Blake Mock

Blake has a combined 15 years of operational and sales experience within the oil and gas industry. He attended Austin College in Sherman, TX, where he graduated with a Business Administration degree and was captain of the varsity football team. From there, he went straight into the field working for Multi Shot as an MWD hand and was then promoted to MWD Coordinator. Blake then began his journey in sales with NOV Coring and then moved on to Canamera Coring, where he is now the U.S. Sales Manager and has over 11 years of experience in coring.



## Abstract

### **“Core Acquisition and New Technology”**

The coring industry has seen a significant transition in the ability to core longer intervals in fewer runs. For instance, earlier in this century, a 90’ + run would have been considered an enormous success and would have taken much planning and careful execution to implement. Now, because of new innovative engineering designs for coring technologies that have come into play in the last couple of decades, single coring runs of over 300 feet have been successfully accomplished in multiple basins throughout North America.

In this session, we will discuss the technologies that have made coring more operationally efficient and cost-effective while making longer run lengths more feasible.

Join our group on

**LinkedIn**

Keep in Touch

through the Shreveport Geological  
Society LinkedIn Group.



# Jerry W. Taylor

Consulting Geologist, LLC

17377 LAUREN DRIVE  
PRAIRIEVILLE, LA 70769

1-(225)-287-8342

JWTGEOLOGY@GMAIL.COM

WWW.JWTGEOLOGY.COM

# **R. LACY / CRAIN ENERGY**

*Oil and Gas Investments  
Exploration and Development*

222 EAST TYLER STREET  
LONGVIEW, TX 75601  
903-758-8276 (O)

**Chris Bresch**  
*V.P. Exploration*  
cbresch@rlacy.com

**Hunter Brumble**  
*Staff Geoscientist*  
hbrumble@rlacy.com

**Scott Caswell**  
*Sr. Geophysicist/Geoscientist*  
scaswell@rlacy.com



Address: 5395 Pearl Prkwy, Ste. 200  
Boulder, CO 80301  
Telephone: (303) 541-1559  
Fax: (303) 443-1551

&

Address: 401 Edwards St., Ste. 1601  
Shreveport, LA 71101  
Telephone: (318) 227-8668  
Fax: (318) 227-9012

Operating in the MAFla, ArkLaTex,  
and WY

# **MUSLOW OIL & GAS, INC.**

330 Marshall Street  
Suite 628  
Shreveport, LA 71101

**Eric Weiss**  
*President*

(318) 221-8694  
Fax: (318) 227-2106

# Mock Dig Volunteers Needed

Each year the Shreveport Geological Society participates in the Red River Revel by organizing the Mock Geological Dig, courtesy of Security Exploration. SGS members volunteer to introduce young people to the excitement of scientific discovery. Rocks, minerals and fossils are scattered in a giant sand box that is roped off in squares, just like a real geological dig!

Children are encouraged to claim a section and hunt for quartz, pyrite, sharks' teeth, and polished rocks for a 15-30 minute shift, after which volunteers reseed the dig. Young adults high-school- to college-aged are encouraged to volunteer at the dig along with SGS members to learn more about rocks and minerals and to understand how important science is in our community.

Please volunteer for a shift that fits your schedule! You will also receive a commemorative t-shirt. More details at:

<https://bit.ly/2021MockDig>

The Mock Dig will be open October 2-10:

Saturdays 11AM – 10PM

Sundays 11AM – 7PM

Monday – Wednesday 5PM – 9PM

Thursday – Friday 5PM – 10PM



**Kingwood Exploration, LLC**  
**Oil & Gas Exploration**  
**and Production**



**Kurt M. Ley**

Exploration Manager & Partner

**Robert E. Braswell**

Engineering/Operations Manager & Partner

416 Travis St., Suite 1100  
Shreveport, LA 71101

Phone: 318-946-8585  
Fax: 318-946-8287

kurt.ley@kingwoodexploration.com  
robert.braswell@kingwoodexploration.com



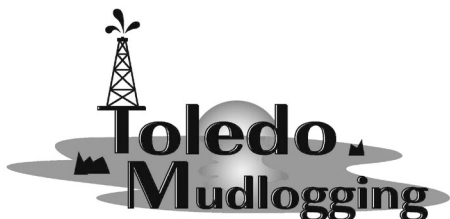
*Established by G.M. Anderson*

**333 TEXAS ST., SUITE 2020**

**SHREVEPORT, LA 71101-5357**

**Phone: (318) 227-2000**

**Fax: (318) 425-5935**



★ Many, LA

★ Midland, TX

**The Horizontal Specialists!!**

We work with the greatest companies  
in the world, please give us a call  
to see what we can do for you!!

**Joe Eidson 318-623-5435**

**Michael Danos 318-332-7673**

20 Ford Road, Many, LA 71449

**Security Exploration, Inc.**

8509 Line Avenue  
Shreveport, LA 71106



J. Stafford Comegys  
President

Donna Walker  
Geologist

Barbara Lyles  
Office Manager

**OIL & GAS EXPLORATION**

**Tel: (318) 222-1066**

**Fax: (318) 222-4932**

# Oil Patch Quiz

*By Steve Walkinshaw, P.G.*

Oil patch quiz time. Were it not for the coring of a key interval in its discovery well, a certain field ("J") would not have been discovered ~14 years ago. LWD and core gamma ray curves indicated a very shaley interval; instead, the core was essentially 100% sand and saturated with oil.

This discovery (and several others that followed) was made in a "mature" area. Where optimal, reservoir porosity and permeability is phenomenal: as high as 30% and 12 darcies. Production has exceeded 90,000 BOPD.

It appears oil migrated into these traps less than 1.6 Ma. Biodegradation has impacted oil above 6,430 feet.

Questions...

Part 1: What field ("J") am I referring to?

Part 2: In what country?

Part 3: What adjacent discoveries were (a) "I" (b) "K" and (c) "L"?

Part 4: What is the age of the field "J" reservoir?

Part 5: What's the lithology and age of its topseal as shown in "B" and "E"?

Part 6: The fields shown are atop or on the flank of the large basement uplift "M". What's its name?

Part 7: What is the source of the oil that charged field "J"?

Part 8: What caused the upward structural movement believed associated with the biodegradation of the oil in the area?

Bonus:

Part 9: What producing province did the discovery of "J" revitalize?

Part 10: What company generated prospect "J"?



# THE PETROLEUM CLUB OF SHREVEPORT

Serving delectable cuisine to the  
Shreveport Geological Society  
regular luncheon meetings.

**318-425-4251**



**David Meadows  
Manager**

Mid South Tower Bldg.  
416 Travis Street, Suite 1414  
Shreveport, LA 71101

Phone: 318-425-7617  
Fax: 318-425-1385  
Email: [jmexploration@comcast.net](mailto:jmexploration@comcast.net)

## **BRAMMER** ENGINEERING, INC.

**Services:**

- **Drilling**
- **Completion**
- **Construction**
- **Production**
- **HSE**
- **Regulatory**
- **Land**
- **Accounting**
- **Risk Management**
- **Information Systems**



[www.brammer.com](http://www.brammer.com)  
318.429.2345 o • 318.429.2340 f

401 Edwards Street, Suite 1510, Shreveport, LA 71101

## **WLS CORPORATION**

**OIL & GAS  
EXPLORATION & PRODUCTION**

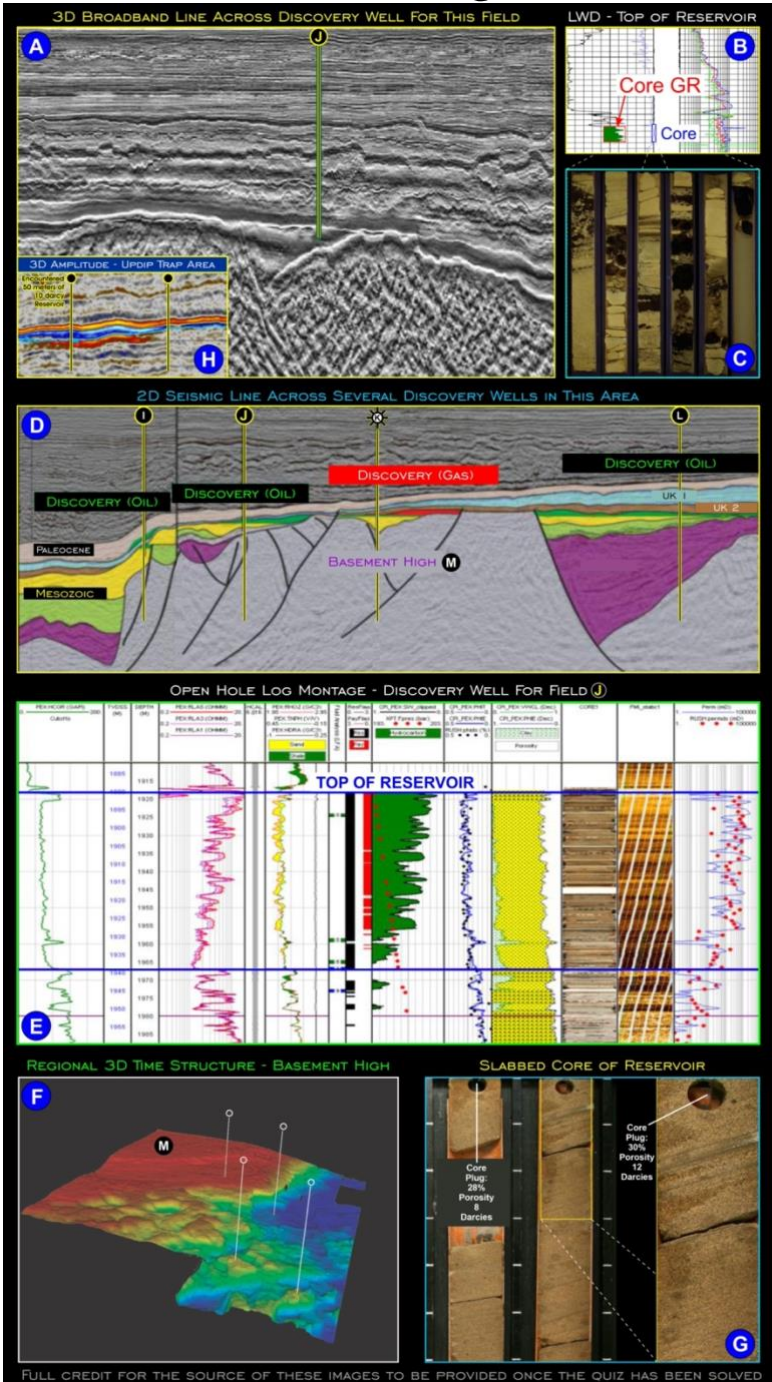
**Wayne L. Simpson  
President**

**Philip Davis  
Geologist**

416 Travis Street, Suite 1006  
Shreveport, Louisiana 71101

Office: (318) 425-2978  
Fax: (318) 425-3166

# Oil Patch Quiz



Answers on p.29

# **Baldwin Madden Energy, LLC**

*Oil and Gas Property  
Acquisitions and Development*

**George A. Baldwin, Jr.**

**Gregory K. Madden**

**Christopher D. Franks**  
Senior Geologist

**Lonnie J. Shaw**  
Director of Accounting & Finance

**(318) 429-2220**

**(318) 429-2229 Fax**

333 Texas Street, Suite 1919  
Shreveport, LA 71101-3676

# **Reynolds Drilling Company, Inc.**

7591 Fern Ave., Suite 2001  
Shreveport, Louisiana 71105-5502

Phone: (318) 227-0118

Fax: (318) 227-0171

reydrill@bellsouth.net

**Terry Pat Reynolds**  
*President*

# **STROUD PRODUCTION, LLC**

333 Texas Street, Suite 860

Shreveport, Louisiana 71101-5302

Voice: (318) 429-2260

Fax: (318) 429 2255

Email: ras@spllc.com

# **Mike Rogers Drilling Co., Inc.**

Drilling & Interest Participation

**MIKE ROGERS**, PRESIDENT  
**CRAIG ROGERS**, VICE PRESIDENT

Office: 870-234-2356 • Fax: 870-234-7487

1708 N. Vine Street • P. O. Box 126 • Magnolia, AR 71754  
email: mrdc1981@gmail.com

Advertise Here!  
Contact Kurt Ley at 946-8585

# Monthly Permits – August 2021

*Provided by ABCD GIS Mapping*

## Texas Permits

AppDate	County	API	Operator	Purpose	TD
8/4/21	GREGG	18331543	BUFFCO PRODUCTION INC. (106406)	Recompletion	10800
8/6/21	PANOLA	36538624	ROCKCLIFF ENERGY OPERATING LLC (722890)	New Drill	13000
8/6/21	PANOLA	36538626	ROCKCLIFF ENERGY OPERATING LLC (722890)	New Drill	13000
8/9/21	CASS	06730840	ROSE CITY RESOURCES, LLC (727892)	New Drill	12300
8/11/21	HARRISON	20335469	COMSTOCK OIL & GAS, LLC (170038)	New Drill	13000
8/13/21	HARRISON	20334173	MERIT ENERGY COMPANY (561136)	Recompletion	10090
8/16/21	HARRISON	20335470	COMSTOCK OIL & GAS, LLC (170038)	New Drill	13000
8/19/21	GREGG	18332074	DORFMAN PRODUCTION COMPANY (223490)	Recompletion	10200
8/19/21	HARRISON	20335471	COMSTOCK OIL & GAS, LLC (170038)	New Drill	13000
8/19/21	HARRISON	20335472	ROCKCLIFF ENERGY OPERATING LLC (722890)	New Drill	13000
8/19/21	HARRISON	20335473	ROCKCLIFF ENERGY OPERATING LLC (722890)	New Drill	13000
8/30/21	PANOLA	36538678	KJ ENERGY, LLC (469901)	New Drill	10125
8/31/21	CASS	06730841	ROSE CITY RESOURCES, LLC (727892)	New Drill	11400
8/31/21	HARRISON	20335474	RFE OPERATING, LLC (704776)	New Drill	9671

## Louisiana Permits

Permit Date	County	Well SN	Operator	Well Name	Depth
8/9/21	BIENVILLE	252927	BPX OPERATING COMPANY	HA RA SUR; J P HOLLEY 8-17-20HC	21952
8/9/21	CADDO	252928	EGH OPERATING, LLC	ANKERSON	1100
8/9/21	CADDO	252929	EGH OPERATING, LLC	ANKERSON	1100
8/9/21	CADDO	252930	EGH OPERATING, LLC	ANKERSON	1100
8/11/21	BIENVILLE	252932	AETHON ENERGY OPERATING LLC	HA RA SUFF;GEP 13-24-25 HC	22990
8/11/21	BIENVILLE	252933	AETHON ENERGY OPERATING LLC	HA RA SUFF;GEP 13-24-25 HC	23070
8/11/21	BIENVILLE	252934	AETHON ENERGY OPERATING LLC	HA RA SUFF;GEP 13-24-25 HC	23510
8/11/21	CADDO	252935	TRINITY OPERATING (USG), LLC	HA RA SU121;BLOUNT 15-22 H	21600
8/11/21	CADDO	252936	TRINITY OPERATING (USG), LLC	HA RA SU121;BLOUNT 15-22 H	21600
8/12/21	CADDO	252937	TRINITY OPERATING (USG), LLC	HA RA SUHH;BLOUNT 10-3 H	21600
8/12/21	CADDO	252938	TRINITY OPERATING (USG), LLC	HA RA SUHH;BLOUNT 10-3 H	21600
8/17/21	RED RIVER	252941	INDIGO MINERALS LLC	HA RA SUSS;LGR 22&15&10-11-9HC	26000
8/17/21	RED RIVER	252942	INDIGO MINERALS LLC	HA RA SUSS;LGR 22&15&10-11-9HC	26000
8/19/21	CADDO	252943	TRINITY OPERATING (USG), LLC	HA RA SU132;HEROLD 23-14 H	21600
8/19/21	CADDO	252949	BLUE DOME OPERATING, LLC	HA RA SU69;BICKNELL 1-36 HC	22500
8/19/21	CADDO	252950	BLUE DOME OPERATING, LLC	HA RA SU69;BICKNELL 1-36 HC	22500
8/19/21	CADDO	252951	BLUE DOME OPERATING, LLC	HA RA SU69;BICKNELL 1-36 HC	22500
8/19/21	DE SOTO	252946	INDIGO MINERALS LLC	HA RA SUDD;BGLY 28&21-14-16 HC	24500
8/19/21	DE SOTO	252947	INDIGO MINERALS LLC	HA RA SUDD;BGLY 28&21-14-16 HC	24500
8/19/21	DE SOTO	252948	INDIGO MINERALS LLC	HA RA SUDD;BGLY 28&21-14-16 HC	24500
8/23/21	RED RIVER	252953	BPX OPERATING COMPANY	HA RA SUS;MJR FAMILLC21-28-33HC	24666
8/23/21	RED RIVER	252954	BPX OPERATING COMPANY MCCORMICK PRODUCTION	HA RA SUS;MJR FAMILLC21-28-33HC	23858
8/24/21	CADDO	252957	COMPANY, INC.	CAPI VIV RA SU;WILLIAMS	5700
8/26/21	BIENVILLE	252959	AETHON ENERGY OPERATING LLC	HA RA SUT;M SANDERS 4 H HA RA SUW; CARTHAGE TMBR 4-9HC	17457
8/27/21	BIENVILLE	252962	AETHON ENERGY OPERATING LLC		22285
8/27/21	DE SOTO	252960	COMSTOCK OIL & GAS--LA, LLC	HA RA SUW;OLYMPIA MIN 28-33 HC	24000
8/27/21	DE SOTO	252961	COMSTOCK OIL & GAS--LA, LLC	HA RA SUW;OLYMPIA MIN 28-33 HC	24000

See Map on following page.



**Shreveport Petroleum Data Assn., Inc.**

**333 Texas Street, Suite 900**

**Shreveport, LA 71101**

**(318) 429-2237**

**Fax (318) 429-2441**

**Website : [www.spdalogs.org](http://www.spdalogs.org)**

**[spda@spdalog.org](mailto:spda@spdalog.org)**

**Cindy Shepherd**

**Manager**



**Bobby E. Jelks**  
*President*

**Faith N. Gilbert**  
*CFO*

P. O. Box 7665  
Shreveport, LA 71135-7665

**Edward Yarborough**  
*Exploration Manager*

Phone: (318) 221-2688

Fax: (318) 459-2935

**James Light**  
*Land Manager*



**GEOVENTURES™**

**Ashley Garcia**

*Assistant Program Manager*

Main +1 713 789 7250

Direct +1 281 781 1005

Fax +1 713 789 7201

Mobile +1 281 239 4576

[ashley.garcia@iongeo.com](mailto:ashley.garcia@iongeo.com)

2105 City West Blvd., Ste. 900  
Houston, TX 77042-2837 USA [iongeo.com](http://iongeo.com)



**L. CHRIS JOHNSON**  
*Manager*

2650 Fairfield Ave  
Shreveport, LA 71104  
BUS:(318) 222-6652  
FAX: (318) 222-6673  
[cjohnson@jerlic.com](mailto:cjohnson@jerlic.com)

**GRIGSBY PETROLEUM, INC.**

**Oil & Gas Exploration  
and Production**

333 Texas St., Suite 2285  
Shreveport, LA 71101  
Phone (318) 425-5306  
Fax (318) 425-3733

**David L. Billingsley, Jr.**  
**Certified Petroleum Geologist**

400 Travis Street, Suite 1230  
Shreveport, LA 71101  
[DLBJR1@aol.com](mailto:DLBJR1@aol.com)

Cell Phone  
(318) 426-4320



**OIL AND GAS**

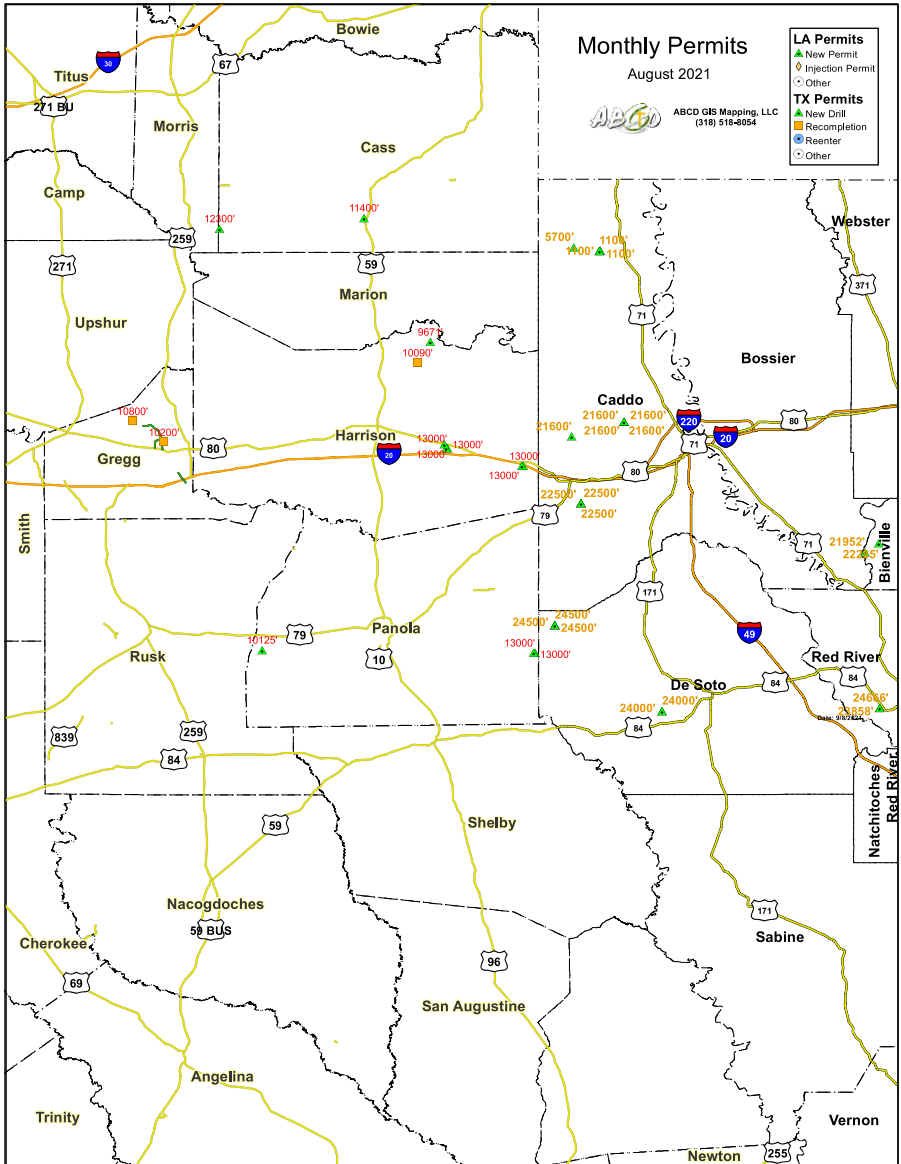
**DIANA L. CHANCE**  
**MANAGING DIRECTOR**

P. O. Box 1346 SHREVEPORT, LA 71164  
(318) 227-2131 • FAX: (318) 222-5832  
CELL: (318) 347-8848  
[WWW.DONNERPROPERTIES.COM](http://WWW.DONNERPROPERTIES.COM)

# Monthly Permits – August 2021

Provided by ABCD GIS Mapping

## Map



See Texas & Louisiana Permits listed on previous page.



## Thomas C. Wyche

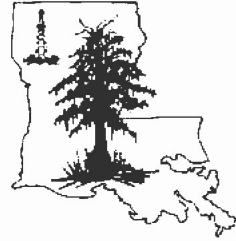
CERTIFIED PETROLEUM GEOLOGIST

*Horizontal & Vertical Projects*  
E.Tx., N.La., S.Ark.

333 Texas St., Suite 703  
Shreveport, LA 71101  
318.465.2944  
geo1tcw@gmail.com

LA-PG  
AAPG-CPG

## Cypress Operating, Inc.



**STEVEN A. SINGLETARY**  
**BEN ROBINSON**

*Petroleum Geologists*

Office: (318) 424-2031  
Fax: (318) 425-8140

330 Marshall Street, Suite 930  
Shreveport, LA 71101



EXPLORATION, L.L.C.

401 Edwards Street, Suite 1200  
Shreveport, LA 71101

P.O. Box 1367  
Shreveport, LA 71164

office: (318) 222-8406  
fax: (318) 222-6061  
email: mei@marlinexploration.com

**Jon Q=Petersen**  
President

**S. Cody Lenert**  
Geologist

**Autie T. Orjias**  
V.P./Land Manager

**Ryan Q=Petersen**  
Land

**Dean Giles**  
Secretary/Treasurer



Seismic Exchange, Inc.

Strategic Speculative Surveys  
Geophysical Data Marketing & Management

**YOUR**  
Full Service  
National  
Seismic Data  
Marketing Firm

Marketing contact:  
**Layne Williams**  
lwilliams@seismicexchange.com

DALLAS DENVER HOUSTON NEW ORLEANS TULSA

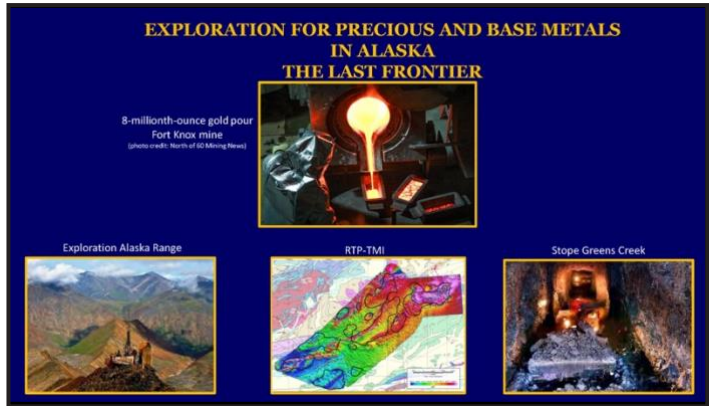
201 St Charles Ave., Suite 4300  
New Orleans, LA 70170  
(D) 504-510-2508 (C) 504-458-3056

www.seismicexchange.com

# Photos from the September 2021 Meeting

*Photos by Ian Byram*

George W. Roth presented “Exploration for Precious and Base Metals in Alaska: The Last Frontier.” SGS members and guests enjoyed the presentation and lunch at the Petroleum Club of Shreveport.





# BER-EX-CO., INC.

**Orville Roger Berg, Ph.D.**

Exploration, Exploitation  
Seismic Evaluation  
Domestic, International

400 Travis St., Suite 1612  
Shreveport, LA 71101-3108  
(318) 220-0300  
orberg@bellsouth.net

9949 Beaver Creek Drive  
Shreveport, LA 71106  
(318) 798-1748

# GERARD ASSOCIATES, L.C.

OIL & GAS EXPLORATION  
DEVELOPMENT AND ACQUISITIONS

**J. A. Wojtkiewicz • Charles Gerard**

625 Market St., Suite 250  
Shreveport, LA 71101

Tel. (318) 221-0761 • FAX (318) 221-8835

## ODEN & ASSOCIATES, LLC

*Oil and Gas Exploration*  
Phone: 318-222-2400  
Fax: 318-226-0840



**ALAN SCHLICHTMIER**  
*Geologist*

P.O. Box 1806  
Shreveport, LA 71166

416 Travis Street, Ste. 400  
Shreveport, LA 71101  
odenassoc@bellsouth.net



**Kalmbach**  
**Production Company, LLC**

**Sam Kalmbach**  
**Geologist**

400 Travis Street, Ste. 516 office: (318) 424-6566  
Shreveport, LA 71101 cell (318) 470-9977  
e-mail: sam.geo.kpc@gmail.com

## **BARROW-SHAVER** **RESOURCES COMPANY**

Oil & Gas Exploration & Development

**Scott Owen Shaver**  
Managing Partner and Exploration Manager

903-593-5221 Office  
903-593-1692 Fax  
903-561-4711 Home  
903-582-4711 Farm  
903-245-4999 Mobile

977 Pruitt Place  
Tyler, Texas 75703  
sos-bsr@tyler.net



Drilling Contractor  
Oil & Gas Operator  
Turnkey Services  
Well Service & Workover  
Working Interest Participant

**318-992-4111**  
P. O. Box 2990, Jena, LA 71342  
justissoil.com

## **CAPLIS FORESTRY, LLC**

**JEFFREY W. CAPLIS**

**-CONSULTING FORESTER-**

**CELL: 318-617-9016**  
**OFFICE: 318-752-3662**  
**586 CAPLIS SLIGO RD.**  
**BOSSIER CITY, LA 71112**

*-complete forestry services-*

- Timber Appraisals • Timber Management • Timber Cruising •
- Damage Appraisals • Tree Planting •

**B.S. LOUISIANA TECH: SCHOOL OF FORESTRY**

# GEOGULF2021

A U S T I N  
October 27–29, 2021

71st Annual Gulf Coast Geoscience Convention

1 <b>EP</b> Exploration & Production	2 <b>RM</b> Resource Management	3 <b>SE</b> Sustainable Energy	4 <b>Tech</b> Technology	5 <b>PD</b> Panel Discussions
---	--	---	--------------------------------	--



Immerse Yourself  
in the Evolution of  
**Geological Science**



Hosted by  
Austin Geological Society  
Bureau of Economic Geology





# JON E. SAYE

**PETROLEUM GEOLOGIST**

Office: 318-221-4504  
Fax: 318-221-4516  
Cell: 318-458-1515

1015 Mid South Twr. • P. O. Box 137  
Shreveport, LA 71161  
[jsaye@prodigy.net](mailto:jsaye@prodigy.net)

## COUTRET & ASSOC., INC.

**Petroleum Reservoir Engineers**  
Property Evaluation, Reservoir Engineering  
Fluid Injection, Property Management

**Louisiana Tower**  
401 Edwards Street  
Shreveport, LA 71101

**Telephone: (318) 221-0482**  
**Fax: (318) 221-3202**  
**E-mail: [rmcgowen@coutret.com](mailto:rmcgowen@coutret.com)**



**GEOVENTURES™**

**Alvin Rowbatham**  
Sales Manager

Main +1 713 789 7250  
Direct +1 281 781 1005  
Fax +1 713 789 7201  
Mobile +1 832 372 2366  
[alvin.rowbatham@iongeo.com](mailto:alvin.rowbatham@iongeo.com)

2105 City West Blvd., Ste. 900  
Houston, TX 77042-2837 USA [iongeo.com](http://iongeo.com)



**Delta-T  
Geophysical  
Consulting, Inc.**

**Comprehensive Geophysical Services**

- Kingdom Suite 2d/3d pak
- Geographix
- GMA
- Neuralog
- Mesa 3-D Design
- Digirule

**Woodie Huffman, CEO**

401 Edwards Street, Suite 826  
Shreveport, LA 71101-5510

Phone: (318) 221-0414

Fax: (318) 425-0688

Email: [delta@bellsouth.net](mailto:delta@bellsouth.net)

# Williamson

**OIL & GAS, INC.**

**Oil & Gas Development**



Office: (318) 221-2923 400 Travis Street  
Fax: (318) 221-3488 Suite 1410  
Email: [bob@williamsonogi.com](mailto:bob@williamsonogi.com) Shreveport, LA 71101

**Joe R. White, Jr.**  
Petroleum Geologist

8505 Dogwood Trail  
Houghton, LA 71037  
Cell. 318-423-9828  
Hm. 318-949-3539  
Available for Consulting

**AAPG CPG #5580**  
**MS RPG #0097**  
**LA CPG #345**  
[Jwhite1362@aol.com](mailto:Jwhite1362@aol.com)  
[Joerjrw@gmail.com](mailto:Joerjrw@gmail.com)

## Cowgill & Associates, L.L.C.

Oil & Gas Exploration & Production

**Stephen C. Cowgill**  
Geologist/Managing Partner

P. O. Box 72180 Office: 318.429.2170  
Bossier City, LA 71172-2180 Fax: 318.429.1170  
[cowgill@suddenlink.net](mailto:cowgill@suddenlink.net) Cell: 318.455.9516

## CSC ENERGY CORP.

*OIL & GAS EXPLORATION*

**Joel B. Chevalier**  
PRESIDENT

416 Travis Street  
Suite 507  
Shreveport, LA 71101

Mobile: (318) 469-5625  
[cscenergy@bellsouth.net](mailto:cscenergy@bellsouth.net)



# LOUISIANA BOARD OF PROFESSIONAL GEOSCIENTISTS

## Geoscientist Licensing in Louisiana

### Did you know?

When you attend a monthly Shreveport Geological Society meeting, you earn one hour of continuing education credit for your LBOPG license. This is a simple and enjoyable way to get your hours! You can also find links to continuing education ethics credit courses at <https://sgs1.org/continuing-education/>.

### Ready to track your CE hours?

Visit the LBOPG website today to download your continuing education log template [lbopg.org/resources/continuing-education](http://lbopg.org/resources/continuing-education)

	A	B	C	D	E	F	G	H	I	J	K	L
1	<b>Name:</b>					<b>PG License #:</b>		<b>Renewal Date:</b>				
2	<b>Date</b>	<b>Activity</b>				<b>Sponsor Organization</b>			<b>Credits</b>			
3		<b>Code*</b>	<b>Title</b>		<b>Instructor</b>	<b>Name</b>		<b>Location</b>	<b>Time</b>	<b>CEU</b>	<b>PDH</b>	
4												
5												
6												
7												
8												
9												
10												
11												
12												
13												
14												
15												
16												
17												
18												
19												
20												
21	<b>Total PDH claimed this renewal period:</b>										0	
22	<b>PDH carry over from previous year claimed for this report:</b>											
23	<b>Total PDH claimed to meet minimum requirements:</b>										0	
24	<b>PDH to be carried over to next year's report:</b>											
26	<b>Audits will be conducted randomly and/or as needed to confirm CE activities each year.</b>											
27	<b>It is your responsibility to collect and maintain proof of attendance and completion of CE activities in case an audit is called.</b>											
28	<b>*Code</b>		<b>Conversion of =</b>		<b>PDH</b>	<b>Minimum hrs. to renew</b>		<b>Maximum hrs. Allowed/Period</b>				
29	Participant Credit	P	Each Direct Hour =	1		14	Geoscience Credits	Society Meetings				12
30	Instructor Credit	I	CEU, Papers, etc. =	10		1	Ethics Credits	Self directed Coursework				5
31	Authorship Credit	A	College Qtr. Hr. =	10		15	Total	Authorship - Paper				10
32	Meeting Credit	M	Semester Hour =	15				Authorship - Book				45
33	Ethics Credit	E	Instructor =	3XPDH								
34												
35	This form was intended to be a one (1) letter size page, i.e. one (1) years record of CE activity or 15 PDH.											
36	It is recommended that additional data be entered into a second (or third, etc.) worksheet in this spread sheet workbook.											
37	An entire (blank) form can then be copied into the new worksheet and the sheet tab named as the report year.											
38	This workbook has two (2) new sheets included as examples so you can start the process of recording your CE activity.											
39												



*Craig C. Barclay*  
Petroleum Geologist, L.L.C.

10857 Sunrise Point Phone (318) 524-9920  
Shreveport, LA 71106 Mobile (318) 426-2536  
cbarclay1@comcast.net

**WIRELINE**  
**LOGGING**  
**SOLUTIONS**

**Richard "Dick" Swindell**  
*Technical Sales*

Tyler, Texas  
Mobile: 903.253.6226  
richard.swindell@wirelinelogs.com  
wirelinelogs.com

**T. W. MCGUIRE & ASSOCIATES, INC.**  
*Registered Petroleum Engineers*

416 Travis St., Suite 1104 • P. O. Box 1763  
Shreveport, LA 71166  
(318) 222-0761  
(318) 222-0799 Fax

**Robert T. Maranto, P.E.**    **John M. Eppinette**  
robert@twmquire.net    john@twmquire.net

**BAKER  
HUGHES**  
a GE company



**Jim Hankla**  
Sales  
Southern US

M +1 903 312 8500  
james.hankla@bhge.com



**416 TRAVIS STREET ♦ SUITE 600**  
**SHREVEPORT, LA 71101**  
**PHONE ♦ (318) 425-0101**  
**FAX ♦ (318) 425-2211**

**GARY ABRAMS**  
**JOHN STROUD**  
GEOLOGISTS

**JHM, LLC**  
OIL AND GAS EXPLORATION

**Joe McDuff**  
Geologist

351 Chapel Loop                      504.756.2000  
Mandeville, LA 70471              jmcduff@att.net

**DOWNNS**

**ENERGY ACQUISITIONS, LLC**

**SHREVEPORT, LOUISIANA**  
**318-465-1302**

# Oil Patch Quiz

## Answers

Part 1: What field ("J") am I referring to? Edvard Grieg

Part 2: In what country? Norway

Part 3: What adjacent discoveries were (a) "I" (b) "K" and (c) "L"? (a) Apollo, (b) Ragnarrock, and (c) Johan Sverdrup

Part 4: What is the age of the field "J" reservoir? (main reservoir) Triassic

Part 5: What's the lithology and age of its topseal as shown in "B" and "E"? Upper Cretaceous chalk

Part 6: The fields shown are atop or on the flank of the large basement uplift "M". What's its name? the Utsira High

Part 7: What is the source of the oil that charged field "J"? the Draupne Formation

Part 8: What caused the upward structural movement believed associated with the biodegradation of the oil in the area? isostatic rebound following the end of Plio-Pleistocene glaciation in the region

Part 9: What producing province did the discovery of "J" revitalize? the Norwegian Continental Shelf

Part 10: What company generated prospect "J"? Lundin Norway

\*\*\*\*\*

Here are the credits for / sources of the images shown in the montage.

Images "A", "B", "C", "D", "E", "G" and "H": "Unfolding by Holistic Thinking, Giant and Significant Oil Discoveries in a Mature Area: Discovery of Edvard Grieg, Johan Sverdrup and Luno II in the Norwegian North Sea" (Hans Rønnevikand and Arild Jørstad), Search and Discovery Article #110173 (2014)

Image "F": "Structural evolution of minibasins on the Utsira High, northern North Sea; implications for Jurassic sediment dispersal and reservoir distribution" (Christopher A-L. Jackson, Karla E. Kane and Eirik Larsen), Petroleum Geoscience, Vol. 16, 2010, pp. 105–120

# SGS HONORARY MEMBERS

James D. Aimer\*  
William E. Bancroft\*  
Michael W. Beckman\*  
Orville Roger Berg  
David L. Billingsley, Jr.  
B. W. Blanpied\*  
Prentis L. Boatner, Jr.\*  
Alan L. Brittain  
John Franks\*  
Victor P. Grage\*  
John C. Grunau\*  
J. Frank Harrell\*  
James B. Harris\*  
William E. Hayes\*  
Roy T. Hazzard\*  
Dr. Leo Hermann\*  
Kevin B. Hill  
Charles J. Hoke\*  
Perry G. Holloway\*  
Walter E. Hopper\*  
E. B. Hutson\*  
L. Lee Kincade\*  
Joseph O. Laird\*  
Paul Todd Landes, Jr.\*

W. W. Lincoln\*  
William R. Meaney  
Clarence L. Moody\*  
John T. Palmer\*  
Thomas H. Philpott\*  
William M. Plaster\*  
Gene R. Robinson\*  
C. Lane Sartor\*  
Erwin W. Saye\*  
Fred R. Schroeder\*  
C. Ray Scurlock  
Walter H. Spears\*  
William C. Spooner\*  
George D. Thomas\*  
Arthur H. Trowbridge  
Henry J. Tyler\*  
Claude N. Valerius\*  
Warren B. Weeks\*  
Percy J. Wheeler, Jr.  
B. Ross White\*  
R. M. Wilson\*

(\* Deceased)

# Like what you see?

Fill out and mail in this form or find it online at [SGS1.org](http://SGS1.org).

You can renew online instead of filling out this card!  
 ★ [www.sgs1.org](http://www.sgs1.org) ★

Active \$25 / yr	
Associate \$25 / yr	
Honorary \$0 / yr	
Student \$5 / yr	
Optional Donation SGS Scholarship Fund	
Optional Donation Faithful Friends	
<b>Total Payment</b>	

NAME (Please Print) \_\_\_\_\_

Check if new applicant or change of address.

DATE \_\_\_\_\_

APPLICANT OR MEMBER PLEASE TYPE OR PRINT

LAST NAME	FIRST	INITIAL	NICKNAME			
COMPANY			POSITION OR TITLE			
COMPANY MAILING ADDRESS		CITY	STATE	ZIP	COMPANY PHONE	
HOME ADDRESS		CITY	STATE	ZIP	HOME PHONE	
FAX NUMBER		E-MAIL ADDRESS		CELL PHONE		
SCHOOL	DEGREE	MAJOR	YEAR			
PROFESSIONAL AFFILIATIONS	AAPG <input type="checkbox"/> APGS <input type="checkbox"/>	GSA <input type="checkbox"/> PS <input type="checkbox"/>	SEG <input type="checkbox"/> AGI <input type="checkbox"/>	SEPM <input type="checkbox"/> SIPES <input type="checkbox"/>	AIME <input type="checkbox"/> SPE <input type="checkbox"/>	SPWLA <input type="checkbox"/> OTHER _____

OUTLINE OF EXPERIENCE \_\_\_\_\_  
 \_\_\_\_\_  
 SPOUSE'S NAME \_\_\_\_\_

**PREFERRED MAILING ADDRESS**  
 HOME  BUSINESS  
 EMAIL ME THE NEWSLETTER  
 (no printed copy will be mailed)

## QUALIFICATIONS FROM BY-LAWS

In order to be eligible for active membership, an applicant shall be engaged in the practice or teaching of geology or related sciences.

In order to be an associate member, an applicant shall be interested in geological science but not actively engaged in the practice or teaching of geology or related sciences.

### To The EXECUTIVE BOARD:

I hereby apply for  ACTIVE  ASSOCIATE membership in SHREVEPORT GEOLOGICAL SOCIETY and pledge myself to abide by its Constitution and By-laws.

Date: \_\_\_\_\_ Signature: \_\_\_\_\_

SPACE BELOW TO BE USED FOR PROCESSING ONLY

**Membership Committee**  
 Received: \_\_\_\_\_  
 Approved for:  Active  
 Associate  
 Student

**Executive Board**  
 Approved: \_\_\_\_\_ SECRETARY  
 Date: \_\_\_\_\_