



Shreveport Geological Society **NEWSLETTER**

Volume 67, No. 2

October 2022



Faithful Friends p. 3
Yazoo Evolution p. 9
Golf Tournament Photos p. 17



SGS1.ORG

Message from



the President

Autumn greetings SGS! As the leaves and temperature begin to drop, I am happy to report that participation with this group seems to be on the way up. We had a great turn out at the 29th Annual ALTAPL/SGS Golf Tournament. I would like to thank Claire Iles and Cody Lenert for all their help in organizing this & making it a successful event.

As I write this, the world awaits the arrival of Hurricane Ian along Florida's coast. It is the ninth named hurricane of the 2022 season and is currently forecasted as a Category 4 storm. Most models are projecting Tampa to take a major hit - its first since 1921 - and that could be devastating.

In political news, the oil and gas industry came under attack once again by some Democrats in Washington. During a House Oversight Committee Hearing held at the end of September, Democrats staged hearings to attack the American energy industry and promote their Green New Deal agenda. Louisiana was particularly targeted by the activists. During the second panel of the second day, activist Raya Salter sparred with LA Congressman Clay Higgins over the importance of these industries. Ms Salter called for the immediate elimination of America's oil, gas, and petrochemical industry. She also claimed that American energy production was systemically racist and was pursuing "mass extinction". Congressman Higgins responded to these claims by reminding Ms Salter that the modern world runs on oil and gas, and that virtually everything everywhere contains petrochemical byproducts. When asked how she would account for this, Ms. Salter had no answers.

It is important that a balanced approach is taken that results in real economic benefits but also considers environmental impacts. No Republican or Democrat wants dirty air or water. This is especially important in a state like ours where enjoyment of the outdoors is engraved in to our culture and heritage. While empowering the industry is a top priority, we must ensure proper conservation and mitigation programs are in place to maintain our sensitive ecosystem and protect our valuable natural resources.

In other news, leaders in Louisiana's oil and gas energy are praising a recent court ruling that halts President Biden's ban on lease sales in the Gulf of Mexico. A federal judge issued a permanent injunction against the Biden administration's moratorium on new oil and gas leases for federal lands and waters, ruling the President exceeded his authority when he issued an executive order in January 2021.

Over the last month, WTI oil pricing has dropped 15.5% to \$78/bbl and natural gas pricing at Henry Hub has seen a 28% decline to \$6.71/mcf with wellhead cash prices being as low as \$4.75/mcf.

Finally, we have the Red River Revel coming up October 1-9. SGS always does a mock dig for the kids to enjoy, and we will be needing volunteers to help run that station. This was one of the first activities I helped with after joining SGS years ago as well as one of the most rewarding. There's nothing better than seeing the little ones smile as they dig through the dirt and find fossils! If you have an hour or two of your time to donate, please let Carrie Salinas know.

This month's meeting features James Starnes speaking on Petrology, Geoarchaeology, and Evolution of Yazoo Basin in the Lower Mississippi River Valley. I look forward to seeing you there!

Warmest Regards,

Michael Danos

Faithful Friends 2022 - 2023

Milbird Resources, LLC

Charles Gerard

Wild Oak Gas Co., Inc.

Joe White, Jr.

Stroud Exploration
Company, LLC

Joseph McDuff

Williamson and
Associates, LLC

Sartor Richardson

Spanoil Incorporated

John E. Atkins

Steve White, Inc.

Sugar Creek Producing

Hill Geophysical
Consulting, LLC

David Hart

Scott Caswell

Grigsby Petroleum, Inc.

William Meaney

Thomas Wyche

Marlin Exploration, LLC

Jon Saye

Kingwood Exploration

David L. Billingsley, Jr.

Kelly Byram

Toledo Mudlogging, Inc.

Bobby Raines

Christopher D. Franks

Robin Smith

Matthew Chumley

Stuart Oden

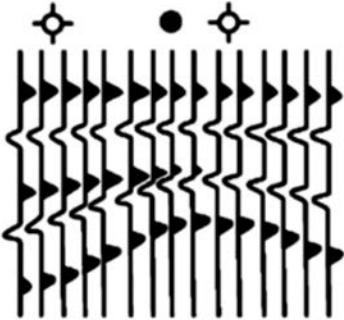
Scott Comegys

Ian Byram

Thank You!

To be a Faithful Friend for 2022-2023,
please contact Kelly Byram.

Hill Geophysical Consulting



Kevin B. Hill

*Integrating Geophysical Technology
with Geology*

**What's Under Your
Feet? Find out:
HILLGEO.COM**



415 TEXAS ST., SUITE 200
SHREVEPORT, LA 71101

318.221.3329
kevin@hillgeo.com



Camterra Resources

Main Office

2615 East End Blvd. South
Marshall, Texas 75672
Telephone: (903) 938-9949
Fax: (903) 935-0521

Dallas Office

100 Crescent Court
Suite 1800
Dallas, TX 75201
Telephone: (214) 310-0512

www.camterra.com

Chief Executive Officer: Zach Carlile

President: Paul Marchand

Land Manager/General Counsel: Allen Staggers

Asst. General Counsel: Pam Johnson

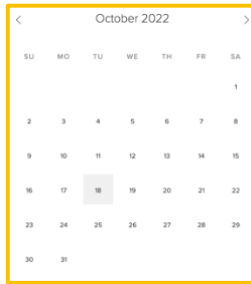
Director of Operations and Engineering: Jim Larkin

Sr. Landman: Jason Derebery

Landman/Gas Marketing/Regulatory: Josh Searle

Seeking Opportunities in Texas, Louisiana, Arkansas, Mississippi, and New Mexico

Calendar of Events



View
this interactive calendar at [SGS1.org](https://www.sgs1.org)

October 1-9

Volunteer at the Mock Dig at the Red River Revel

October 14

RSVP for the Meeting

October 18

Monthly Meeting

James Starnes presents

“Gravel Petrology, Geoarcheology,
and a new look at the evolution of the

Yazoo Basin in the Lower Mississippi River Valley...”

In-person 11:30 a.m. - 1 p.m.; Petroleum Club 15th Floor

Virtual 12:00 p.m. - 1 p.m. Zoom

On the Cover: “Chugach Mountain Range, Alaska” photographed by Kurt Ley. This photo was taken near Chickaloon, along Highway 1. In view is the Matanuska River (sourced by the Matanuska Glacier) and outcrops that are Jurassic and Cretaceous in age.

Interior Art: Page 1 “Fabulous Finds Series No. 38” (*detail*) by Christine Bailey, courtesy of the Bailey Art Gallery at 214 Texas Street. More at [Bailey-Gallery.com](https://www.bailey-gallery.com).

Page 9 “Beginnings” (*detail*) by Mary Virginia Hill.

Got news? Event pictures? Meeting page art?

Email it to the editor today: 1RachelMcNerney@gmail.com



Thomas C. Wyche

CERTIFIED PETROLEUM GEOLOGIST

Horizontal & Vertical Projects
E.Tx., N.La., S.Ark.

333 Texas St., Suite 703
Shreveport, LA 71101
318.465.2944
geo1tcw@gmail.com

AAPG-CPG

Cypress Operating, Inc.



STEVEN A. SINGLETARY
BEN ROBINSON

Petroleum Geologists

Office: (318) 424-2031
Fax: (318) 425-8140

330 Marshall Street, Suite 930
Shreveport, LA 71101



EXPLORATION, L.L.C.

401 Edwards Street, Suite 1200
Shreveport, LA 71101

P.O. Box 1367
Shreveport, LA 71164

office: (318) 222-8406
fax: (318) 222-6061
email: mei@marlinexploration.com

Jon Q=Petersen
President

S. Cody Lenert
Geologist

Autie T. Orjias
V.P./Land Manager

Ryan Q=Petersen
Land

Dean Giles
Secretary/Treasurer

SEI®

Seismic Exchange, Inc.

Strategic Speculative Surveys
Geophysical Data Marketing & Management

Your
Full Service
National
Seismic Data
Marketing Firm

Marketing contact:
Layne Williams
lwilliams@seismicexchange.com

DALLAS DENVER HOUSTON NEW ORLEANS TULSA

201 St Charles Ave., Suite 4300
New Orleans, LA 70170

(D) 504-510-2508 (C) 504-458-3056

www.seismicexchange.com

Mock Dig Volunteers Needed

Each year the Shreveport Geological Society participates in the Red River Revel by organizing the Mock Geological Dig, courtesy of Security Exploration. SGS members volunteer to introduce young people to the excitement of scientific discovery. Rocks, minerals and fossils are scattered in a giant sand box that is roped off in squares, just like a real geological dig!

Children are encouraged to claim a section and hunt for quartz, pyrite, sharks' teeth, and polished rocks for 15-30 minutes, after which SGS members tell them about what they found and get to take home. Volunteers with or without a geology background can help reseed the dig. Young adults high-school- to college-aged are encouraged to volunteer at the dig along with SGS members to learn more about rocks and minerals and to understand how important science is in our community.

Please volunteer for a shift that fits your schedule! You will also receive a commemorative t-shirt. More details at:

<https://bit.ly/MockDig22>

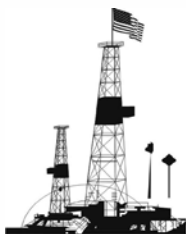
The Mock Dig will be open October 1-9:

Saturdays 11AM – 8PM

Sundays 11AM – 7PM

Monday – Friday 4PM – 8PM





PALMER

PETROLEUM, INC.

Exploration and Development

Operations

Oil and Gas Investments

425 Ashley Ridge Blvd., Suite 360
Shreveport, Louisiana 71106

Phone: (318) 222-0517

www.palmerpetro.com

Fax: (318) 424-3256



Paragon

P R E S S

DESIGN PRINT MAIL

318-868-3351

www.ParagonPress.net

The October Meeting

Make your
RESERVATION

James Starnes

presents

“Gravel Petrology, Geoarcheology,
and a new look at the evolution of the Yazoo Basin...”

Tuesday, October 18

Virtual

12:00 p.m. Zoom

\$10

In-Person

11:30 a.m. Petroleum Club of Shreveport

\$25

We encourage members to invite guests, spouses, and friends to any of our meetings.

If you'd like a seat, kindly **RSVP**
by **Friday, October 18** at [SGS1.org](https://www.sgs1.org)
or by calling Kurt Ley at 318-946-8585



MILESTONE ENERGY, LLC

Oil & Gas Exploration and Development

Joseph A. Lott

Geologist / Managing Partner

Zach Kelly
Geologist

Zach McDonald
Geologist

Thomas A. Giles
Land Manager

333 Texas Street, Suite 516
Shreveport, Louisiana 71101
jlott100@bellsouth.net

Office: 318.212.0470
Fax: 318.212.0469

- Looking for Prospects
- Geophysical Consultant
- Landmark Graphics Corp. Software
- Synthetic Seismograms, modeling and cross sections



- Digitizing capability
- 2-D & 3-D Seismic Acquisition, Processing & Interpretation
- SeisVision 2-D & 3-D interpretation and mapping software

Bobby Ben Taylor - President

O: 120 S Broadway, Suite 102
Tyler, Texas 75702
Mobile: (903) 521-3182

H: 7130 Holly Square Court
Tyler, Texas 75703
Email: taylor@webfoxmail.com

LOOKING FOR PROSPECTS

Let me tailor your geophysical needs.

MUSLOW OIL & GAS, INC.

330 Marshall Street
Suite 628
Shreveport, LA 71101

Eric Weiss
President

(318) 221-8694
Fax: (318) 227-2106

R. LACY / GRAIN ENERGY

*Oil and Gas Investments
Exploration and Development*

222 EAST TYLER STREET
LONGVIEW, TX 75601
903-758-8276 (O)

Chris Bresch
V.P. Exploration
cbresch@rlacy.com

Hunter Brumble
Staff Geoscientist
hbrumble@rlacy.com

Scott Caswell
Sr. Geophysicist/Geoscientist
scaswell@rlacy.com

Biography

James Starnes: Graduate of Millsaps College Geology Department. Division Director for the surface geology and surface mapping research programs at MDEQ, Mississippi Office of Geology. 25 years of research and author of over 100 professional publications while conducting the classic work of the State Geological Survey in documenting the Mississippi's geology, paleontology, geoaerchology, and mineral



resources. President of the Mississippi State Board of Registered Professional Geologists. Member of the research consulting staff at the Mississippi Museum of Natural Science working with the conservation biology and vertebrate paleontology programs.

Abstract

Gravel Petrology, Geoaerchology, and a new look at the evolution of the Yazoo Basin in the Lower Mississippi River Valley: Publication of the Greenwood 1:100,000 Geologic Quadrangle Map in Bolivar, Sunflower, Tallahatchie, Leflore, Carroll, Grenada, Washington, and Coahoma Counties, Mississippi.

This project was preceded by a geoaerchology study by the authors on the classification and age of landforms as it relates to archaeological sites towards the end of the last ice age during the

Paleoindian and Early Archaic cultural periods in the northwest Yazoo Basin region of the Mississippi River Alluvial Plain. Great difficulty was encountered reconciling field observations as interpreted with new bare-earth LIDAR imagery with previous mapping literature interpreted through earlier topographic maps. The initial findings given in 2019 to the Southeastern Archaeological Conference demonstrated a clear need for updated mapping and a reinterpretation of the region. The authors' previous research involved mapping and differentiation of Pleistocene and Tertiary units along the eastern valley wall and subcrop of the loess bluffs region. This work revealed previously undocumented details of the evolution of the ancestral Mississippi River during episodic glaciation as it cut down to its current entrenched. Combining these studies under cooperative grant funded by USGS's StateMap program, the authors' mapped a 1:100,000 scale area which include 32-individual 7.5 min. quadrangle maps, interpretive photo and figures, geological narrative, and 5 structural cross-sections demonstrating the character and stratigraphic relationships of the Middle to Late Eocene Tertiary subcrop units and Pleistocene to recent sediments. Units mapped at the surface in ascending stratigraphic order include: Middle Eocene (Claiborne) Kosciusko Formation, mid-Pleistocene Pre-loess Terrace Deposits, Late Pleistocene (Peorian) Loess, late Pleistocene stream terraces, Pleistocene to Holocene stream alluvium and alluvial fans, and delineated geomorphological features of the Mississippi River Alluvial Plain that range from late Pleistocene to Holocene in age.

Join our group on

LinkedIn

Keep in Touch
through the Shreveport Geological
Society LinkedIn Group.

Kingwood Exploration, LLC
Oil & Gas Exploration
and Production



Kurt M. Ley

Exploration Manager & Partner

Robert E. Braswell

Engineering/Operations Manager & Partner

416 Travis St., Suite 1100
Shreveport, LA 71101

Phone: 318-946-8585

Fax: 318-946-8287

kurt.ley@kingwoodexploration.com
robert.braswell@kingwoodexploration.com



Established by G.M. Anderson

333 TEXAS ST., SUITE 2020

SHREVEPORT, LA 71101-5357

Phone: (318) 227-2000

Fax: (318) 425-5935



★ Many, LA

★ Midland, TX

The Horizontal Specialists!!

We work with the greatest companies
in the world, please give us a call
to see what we can do for you!!

Joe Eidson 318-623-5435

Michael Danos 318-332-7673

20 Ford Road, Many, LA 71449

Security Exploration, Inc.

8509 Line Avenue
Shreveport, LA 71106



J. Stafford Comegys
President

Donna Walker
Geologist

Barbara Lyles
Office Manager

OIL & GAS EXPLORATION

Tel: (318) 222-1066

Fax: (318) 222-4932

At the September Meeting

Photo by Ian Byram

Mark J. Wojna presented “Breton Sound – A Conventional Deep Water Play in Shallow Louisiana State Waters.”

The video has been posted on the SGS website. See page 21 for details.



THE PETROLEUM CLUB OF SHREVEPORT

Serving delectable cuisine to the
Shreveport Geological Society
regular luncheon meetings.

318-425-4251



**David Meadows
Manager**

Mid South Tower Bldg.
416 Travis Street, Suite 1414
Shreveport, LA 71101

Phone: 318-425-7617
Fax: 318-425-1385
Email: jmexploration@comcast.net

BRAMMER ENGINEERING, INC.

Services:

- Drilling
- Completion
- Construction
- Production
- HSE
- Regulatory
- Land
- Accounting
- Risk Management
- Information Systems



www.brammer.com
318.429.2345 o • 318.429.2340 f

401 Edwards Street, Suite 1510, Shreveport, LA 71101

WLS CORPORATION

**OIL & GAS
EXPLORATION & PRODUCTION**

**Wayne L. Simpson
President**

**Philip Davis
Geologist**

416 Travis Street, Suite 1006
Shreveport, Louisiana 71101

Office: (318) 425-2978
Fax: (318) 425-3166

Photos from the Golf Tournament

Photos by Matthew Chumley and Michael Danos



Above: Zach Kelly and Matthew Chumley.



Above: Matthew Chumley and Zach McDonald.



Left: Michael Danos.

BARROW-SHAVER RESOURCES COMPANY

Oil & Gas Exploration & Development

Scott Owen Shaver

Managing Partner and Exploration Manager

903-593-5221 Office

903-593-1692 Fax

903-561-4711 Home

903-582-4711 Farm

903-245-4999 Mobile

977 Pruitt Place

Tyler, Texas 75703

sos-bsr@tyler.net



Drilling Contractor

Oil & Gas Operator

Turnkey Services

Well Service & Workover

Working Interest Participant

318-992-4111

P. O. Box 2990, Jena, LA 71342

justissoil.com

CAPLIS FORESTRY, LLC

JEFFREY W. CAPLIS

-CONSULTING FORESTER-

CELL: 318-617-9016

OFFICE: 318-752-3662

586 CAPLIS SLIGO RD.

BOSSIER CITY, LA 71112

-complete forestry services-

- Timber Appraisals • Timber Management • Timber Cruising •
- Damage Appraisals • Tree Planting •

B.S. LOUISIANA TECH: SCHOOL OF FORESTRY

STROUD PRODUCTION, LLC

333 Texas Street, Suite 860

Shreveport, Louisiana 71101-5302

Voice: (318) 429-2260

Fax: (318) 429 2255

Email: ras@spllc.com

Mike Rogers Drilling Co., Inc.

Drilling & Interest Participation

MIKE ROGERS, PRESIDENT

CRAIG ROGERS, VICE PRESIDENT

Office: 870-234-2356 • Fax: 870-234-7487

1708 N. Vine Street • P. O. Box 126 • Magnolia, AR 71754
email: mrdc1981@gmail.com

Advertise Here!

Contact Kurt Ley at 946-8585

Photos from the Golf Tournament

Photos by David Smith and Preston Smith

Roca Land, who sponsored the Peter Millar shirts for the tournament.



At left, from left to right: Preston Smith, David Luke, John Barr, and Logan Hunt.

At right: The MTX Surveying Team, who set up a Bloody Mary bar.





Shreveport Petroleum Data Assn., Inc.

333 Texas Street, Suite 900

Shreveport, LA 71101

(318) 429-2237

Fax (318) 429-2441

Website : www.spdalogs.org

spda@spdalogs.org

Cindy Shepherd

Manager



Bobby E. Jelks
President

Faith N. Gilbert
CFO

Edward Yarborough
Exploration Manager

James Light
Land Manager

P.O. Box 7726
Shreveport, LA 71137-7726
Phone: (318) 221-2688
Fax: (318) 459-2935



Kalmbach
Production Company, LLC

Sam Kalmbach
Geologist

400 Travis Street, Ste. 516 office: (318) 424-6566
Shreveport, LA 71101 cell (318) 470-9977
e-mail: sam.geo.kpc@gmail.com



L. CHRIS JOHNSON
Manager

2650 Fairfield Ave
Shreveport, LA 71104
BUS:(318) 222-6652
FAX: (318) 222-6673
cjohnson@jerlic.com

GRIGSBY PETROLEUM, INC.

**Oil & Gas Exploration
and Production**

**333 Texas St., Suite 2285
Shreveport, LA 71101
Phone (318) 425-5306
Fax (318) 425-3733**

David L. Billingsley, Jr.
Certified Petroleum Geologist

400 Travis Street, Suite 1230
Shreveport, LA 71101 Cell Phone
DLBJR1@aol.com (318) 426-4320

MILBIRD RESOURCES, LLC
Oil & Gas Exploration

Maurice N. Birdwell

Managing Partner
AAPG Certified Petroleum Geologist
Reg. Prof. Geol. Ark. La. Miss. Tex

2043 Oak Ridge Drive 601.936.6939
Pearl, MS 39208 mnbirdwell@comcast.net

Meeting Videos Online Now

Visit <https://sgs1.org/continuing-education> to find recordings from this year's meetings available for \$10 each. Contact ShreveportGeological@gmail.com if you have any issues.



[WELCOME](#) / [ABOUT US](#) / [EVENTS](#) / [EDUCATION](#) / [MEMBERSHIP](#)

[SCHOLARSHIPS](#)
[MAPS IN SCHOOLS](#)
[THE MOCK DIG](#)
[LECTURES](#)
[CONTINUING EDUCATION](#)

Continuing Education

Shreveport Geological Society members can earn continuing education credit by participating in short courses offered by the SGS on an annual basis, and by taking advantage of the opportunities for continuing education provided below. Fifteen (15) hours of continuing education are required for the annual renewal of a P.G. license, with one of those hours in the area of Professional Ethics. Visit the Louisiana Board of Professional Geoscientists website for more information. If you have suggestions for continuing education opportunities, please submit them here.

Upcoming Opportunities

Check back soon for more.

SGS Meeting Videos



Exploration for Precious and Base Metals in Alaska - The Last Frontier

\$10.00

Presented by George W. Roth on September 21, 2021



Coring and New Technology

\$10.00

Presented by Blake Mock on October 19, 2021



Making the most out of your geochemical data

\$10.00

Presented by Craig D. Barrie on November 16, 2021

Invest in the Future

You can **donate** to the SGS Scholarship Fund online at [SGS1.org](https://sgs1.org) or by writing a check to the SGS with “Scholarship” in the memo line, and you may include an “in memory of” or “in honor of” note as well.

Mail to: Shreveport Geological Society,
P.O. Box 750, Shreveport, LA 71162.



JON E. SAYE

PETROLEUM GEOLOGIST

Office: 318-221-4504
Fax: 318-221-4516
Cell: 318-458-1515

1015 Mid South Twr. • P. O. Box 137
Shreveport, LA 71161
jsaye@prodigy.net

COUTRET & ASSOC., INC.

Petroleum Reservoir Engineers
Property Evaluation, Reservoir Engineering
Fluid Injection, Property Management

Louisiana Tower
401 Edwards Street
Shreveport, LA 71101

Telephone: (318) 221-0482
Fax: (318) 221-3202
E-mail: rmcgowen@coutret.com

ODEN & ASSOCIATES, LLC
Oil and Gas Exploration
Phone: 318-222-2400
Fax: 318-226-0840



ALAN SCHLICHTMIER
Geologist

P.O. Box 1806
Shreveport, LA 71166

416 Travis Street, Ste. 400
Shreveport, LA 71101
odenassoc@bellsouth.net



**Delta-T
Geophysical
Consulting, Inc.**

Comprehensive Geophysical Services

- Kingdom Suite 2d/3d pak
- Geographix
- GMA
- Neuralog
- Mesa 3-D Design
- Digirule

Woodie Huffman, CEO

401 Edwards Street, Suite 826
Shreveport, LA 71101-5510
Phone: (318) 221-0414
Fax: (318) 425-0688
Email: delta@bellsouth.net

Williamson

OIL & GAS, INC.

Oil & Gas Development



Office: (318) 221-2923 400 Travis Street
Fax: (318) 221-3488 Suite 1410
Email: bob@williamsonogi.com Shreveport, LA 71101

Joe R. White, Jr.
Petroleum Geologist

8505 Dogwood Trail
Houghton, LA 71037
Cell. 318-423-9828
Hm. 318-949-3539
Available for Consulting

AAPG CPG #5580
MS RPG #0097
LA CPG #345
Jwhite1362@aol.com
Joerjr@gmail.com

Cowgill & Associates, L.L.C.

Oil & Gas Exploration & Production

Stephen C. Cowgill
Geologist/Managing Partner

P. O. Box 72180 Office: 318.429.2170
Bossier City, LA 71172-2180 Fax: 318.429.1170
cowgill@suddenlink.net Cell: 318.455.9516

CSC

ENERGY CORP.

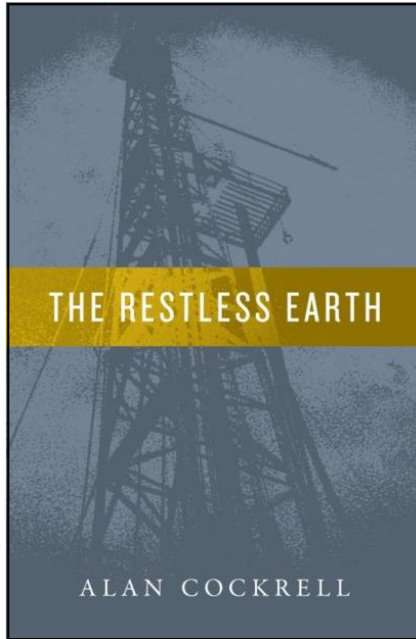
OIL & GAS EXPLORATION

Joel B. Chevalier
PRESIDENT

416 Travis Street
Suite 507
Shreveport, LA 71101

Mobile: (318) 469-5625
cscenergy@bellsouth.net

*Finally, a novel for, and about, oil hunters.
Enjoy a journey back into the way it was.*



Inspired by actual events in the 1950s rural South

The moneymen turned him away, laughing, sneering, saying his science was bad; saying he was too far away from oil, calling him a fool, a dupe, a hopeless loser. His peers, smelling the stench of failure, distanced themselves from him. His lenders—the few he had—fidgeted, fearing he was unlucky.

His bills and worries mounted. His drilling rig, “Lucky Lucy,” true to the antithesis of her name, broke down almost daily. His crews, tired of working for nothing, threatened to walk away.

Crafty, whispering voices, from figures watching from the shadows, schemed to get that which he sought, if he were lucky enough to find it. Eager, desperate faces of farmers, merchants and townspeople stood aside watching, waiting, praying his luck would be theirs, as well.

Few believed him, and as his bit twisted its way into the Earth’s mysterious belly, one who did, a woman he wondered if he could trust, told him what he couldn’t seem to fathom—that his real discovery would not likely be at the bottom of his hole.

The Restless Earth is published by [WordCrafts Press](#) and can be ordered in paperback, hard cover or e-book from [Amazon](#), [Barnes&Noble](#) and other worldwide outlets.

BER-EX-CO., INC.

Orville Roger Berg, Ph.D.

Exploration, Exploitation
Seismic Evaluation
Domestic, International

400 Travis St., Suite 1612
Shreveport, LA 71101-3108
(318) 220-0300
orberg@bellsouth.net

9949 Beaver Creek Drive
Shreveport, LA 71106
(318) 798-1748

Reynolds Drilling Company, Inc.

7591 Fern Ave., Suite 2001
Shreveport, Louisiana 71105-5502

Phone: (318) 227-0118

Fax: (318) 227-0171

reydrill@bellsouth.net

Terry Pat Reynolds
President

GERARD ASSOCIATES, L.C.

OIL & GAS EXPLORATION
DEVELOPMENT AND ACQUISITIONS

J. A. Wojtkiewicz • Charles Gerard

625 Market St., Suite 250
Shreveport, LA 71101
Tel. (318) 221-0761 • FAX (318) 221-8835



SPANOIL INCORPORATED

11050 BELLE ROSE CIRCLE
SHREVEPORT, LA 71106
VOICE: (318) 221-2371
FAX: (318) 221-2372
anthony@spanoil.com

ANTHONY J. SPANO
PRESIDENT



DONNER P R O P E R T I E S

LOGAN J. HUNT, CPL
Argent Mineral Management, LLC, Manager

318.251.5830
lhunt@argentmineral.com

Monthly Permits – August 2022

Provided by ABCD GIS Mapping

Louisiana Permits

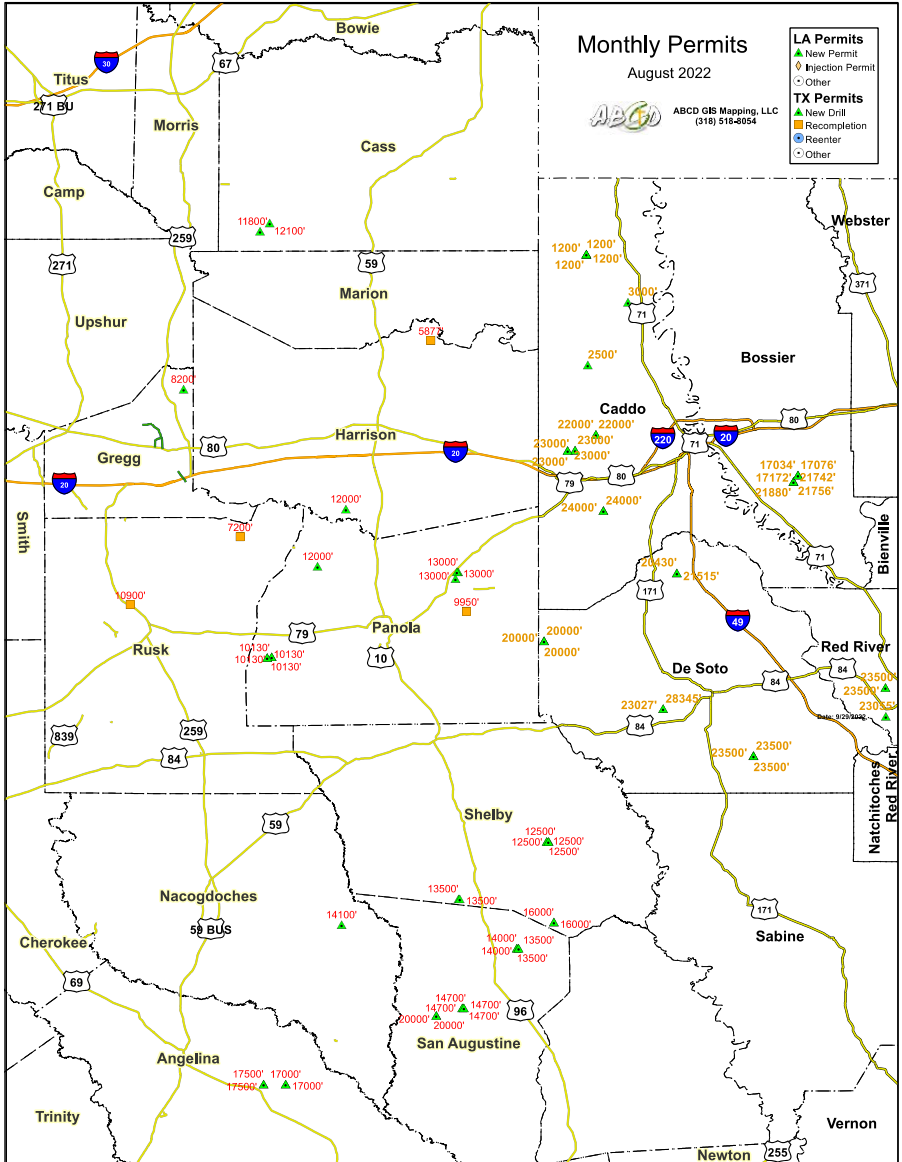
Permit Date	County	Well SN	Operator	Well Name	Depth
8/2/22	DE SOTO	253648	SWN PRODUCTION (LOUISIANA), LLC	HA RA SU73;DAVIS 23&14-15-14HC	20430
8/2/22	DE SOTO	253649	SWN PRODUCTION (LOUISIANA), LLC	HA RA SU73;DAVIS 23&14-15-14HC HA RA SUHH;MM 10&15&40-12-10HC	21515 23500
8/5/22	RED RIVER	253653	CHESAPEAKE OPERATING, L.L.C.	HA RA SUHH;MM 10&15&40-12-10HC	23500
8/5/22	RED RIVER	253654	CHESAPEAKE OPERATING, L.L.C.	NAC ROYALTY 27-41 HC	23055
8/11/22	RED RIVER	253660	BPX OPERATING COMPANY	HA RA SUDD;WOO 8&5-16-15 HC	24000
8/16/22	CADDO	253661	CHESAPEAKE OPERATING, L.L.C.	HA RA SUDD;WOO 8&5-16-15 HC	24000
8/16/22	CADDO	253662	CHESAPEAKE OPERATING, L.L.C.	HA RA SU125;ANTHONY 29-32 H	22000
8/16/22	CADDO	253663	SILVER HILL ENERGY OPERATING, LLC	HA RA SU125;ANTHONY 29-32 H	22000
8/16/22	CADDO	253664	SILVER HILL ENERGY OPERATING, LLC	J W BRIGGS FEE B	1200
8/16/22	CADDO	253665	ETHYL GAS COMPANY, LLC	J W BRIGGS FEE B	1200
8/16/22	CADDO	253666	ETHYL GAS COMPANY, LLC	J W BRIGGS FEE B	1200
8/16/22	CADDO	253667	ETHYL GAS COMPANY, LLC	J W BRIGGS FEE B	1200
8/16/22	CADDO	253668	ETHYL GAS COMPANY, LLC	TROSPER 2-17-16 H	23000
8/17/22	CADDO	253671	PALOMA NATURAL GAS, LLC	TROSPER 2-17-16 H	23000
8/17/22	CADDO	253672	PALOMA NATURAL GAS, LLC	TROSPER 2-17-16 H	23000
8/17/22	CADDO	253673	PALOMA NATURAL GAS, LLC	TROSPER 2-17-16 H	23000
8/17/22	CADDO	253674	PALOMA NATURAL GAS, LLC	TROSPER 2-17-16 H	23000
8/17/22	CADDO	253675	ROOSTER PRODUCTION, LLC	FEIST A	3000
8/18/22	DE SOTO	253677	SWN PRODUCTION (LOUISIANA), LLC	OLYM 21&16&9-12-14 HC	28345
8/18/22	DE SOTO	253678	SWN PRODUCTION (LOUISIANA), LLC PETRO-CHEM OPERATING COMPANY, INC.	OLYM 21&16-12-14 HC CCMP LLC	23027 2500
8/23/22	CADDO	253683	INC.	HA RA SU86; LABOKAY 5-13-16 H	20000
8/23/22	DE SOTO	253680	PALOMA NATURAL GAS, LLC	HA RA SU86; LABOKAY 5-13-16 H	20000
8/23/22	DE SOTO	253681	PALOMA NATURAL GAS, LLC	HA RA SU86; LABOKAY 5&6-13-16 H	20000
8/23/22	DE SOTO	253682	PALOMA NATURAL GAS, LLC	HA RA SU73;HODGES 24-13 HC	21880
8/30/22	BOSSIER	253695	AETHON ENERGY OPERATING LLC	HA RA SU73;HODGES 24-13 HC	21742
8/30/22	BOSSIER	253696	AETHON ENERGY OPERATING LLC	HA RA SU73;HODGES 24-13 HC	21756
8/30/22	BOSSIER	253697	AETHON ENERGY OPERATING LLC	HA RA SU73;HODGES 24-13 HC	21756
8/30/22	BOSSIER	253698	AETHON ENERGY OPERATING LLC	HA RA SU73;TREAT ETAL 24-13 HC	17172
8/30/22	BOSSIER	253699	AETHON ENERGY OPERATING LLC	HA RA SU73;TREAT ETAL 24-13 HC	17034
8/30/22	BOSSIER	253700	AETHON ENERGY OPERATING LLC	HA RA SU73;TREAT ETAL 24-13 HC	17076
8/30/22	DE SOTO	253688	CHESAPEAKE OPERATING, L.L.C.	JUR RA SUF;BRTLY 30&31-11-12HC	23500
8/30/22	DE SOTO	253689	CHESAPEAKE OPERATING, L.L.C.	JUR RA SUF;BRTLY 30&31-11-12HC	23500
8/30/22	DE SOTO	253690	CHESAPEAKE OPERATING, L.L.C.	JUR RA SUF;BRTLY 30&31-11-12HC	23500
8/30/22	RED RIVER	253691	CHESAPEAKE OPERATING, L.L.C.	HA RA SUI;MURRAY 8&17-12-9 HC	23500
8/30/22	RED RIVER	253692	CHESAPEAKE OPERATING, L.L.C.	HA RA SUI;MURRAY 8&17-12-9 HC	23500
8/30/22	RED RIVER	253693	CHESAPEAKE OPERATING, L.L.C.	HA RA SUI;MURRAY 8&5-12-9 HC	23500

See Map and Texas Permits on following pages.

Monthly Permits – August 2022

Provided by ABCD GIS Mapping

Map



See Permits listed on previous and following pages.

Monthly Permits – August 2022

Provided by ABCD GIS Mapping

Texas Permits

AppDate	County	API	Operator	Purpose	TD
8/2/22	CASS	06730863	ROSE CITY RESOURCES, LLC	New Drill	11800
8/3/22	PANOLA	36538767	KJ ENERGY, LLC	New Drill	10130
8/4/22	HARRISON	20335538	SPONTE OPERATING, INC.	New Drill	12000
8/4/22	GREGG	18332173	GIANT NRG CO., LP	New Drill	8200
8/4/22	RUSK	40132651	BUFFCO PRODUCTION INC.	Recompletion	10900
8/9/22	NACOGDOCHES	34733448	AETHON ENERGY OPERATING LLC	New Drill	14100
8/10/22	ANGELINA	00530474	AETHON ENERGY OPERATING LLC	New Drill	17000
8/10/22	ANGELINA	00530475	AETHON ENERGY OPERATING LLC	New Drill	17000
8/12/22	SHELBY	41931844	LEGACY RESERVES OPERATING LP	New Drill	12500
8/12/22	SHELBY	41931845	LEGACY RESERVES OPERATING LP	New Drill	12500
8/12/22	PANOLA	36538780	KJ ENERGY, LLC	New Drill	10130
8/12/22	SHELBY	41931847	LEGACY RESERVES OPERATING LP	New Drill	12500
8/12/22	SAN AUGUSTINE	40530741	AETHON ENERGY OPERATING LLC	New Drill	14000
8/12/22	SAN AUGUSTINE	40530742	AETHON ENERGY OPERATING LLC	New Drill	13500
8/12/22	SAN AUGUSTINE	40530743	AETHON ENERGY OPERATING LLC	New Drill	14000
8/12/22	SAN AUGUSTINE	40530744	AETHON ENERGY OPERATING LLC	New Drill	13500
8/16/22	SAN AUGUSTINE	40530779	XTO ENERGY INC.	New Drill	16000
8/16/22	SAN AUGUSTINE	40530780	XTO ENERGY INC.	New Drill	16000
8/17/22	SAN AUGUSTINE	40530766	AETHON ENERGY OPERATING LLC	New Drill	14700
8/17/22	SAN AUGUSTINE	40530768	AETHON ENERGY OPERATING LLC	New Drill	14700
8/18/22	PANOLA	36538769	ROCKCLIFF ENERGY OPERATING LLC	New Drill	13000
8/18/22	PANOLA	36538770	ROCKCLIFF ENERGY OPERATING LLC	New Drill	13000
8/18/22	PANOLA	36538771	ROCKCLIFF ENERGY OPERATING LLC	New Drill	13000
8/18/22	SAN AUGUSTINE	40530767	AETHON ENERGY OPERATING LLC	New Drill	14700
8/19/22	PANOLA	36531697	GLASSELL PRODUCING COMPANY, INC.	Recompletion	9950
8/19/22	SAN AUGUSTINE	40530782	XTO ENERGY INC.	New Drill	13500
8/19/22	SAN AUGUSTINE	40530783	XTO ENERGY INC.	New Drill	13500
8/19/22	SAN AUGUSTINE	40530769	AETHON ENERGY OPERATING LLC	New Drill	14700
8/23/22	SAN AUGUSTINE	40530775	XTO ENERGY INC.	New Drill	20000
8/23/22	SAN AUGUSTINE	40530776	XTO ENERGY INC.	New Drill	20000
8/24/22	PANOLA	36538780	KJ ENERGY, LLC	New Drill	10130
8/26/22	PANOLA	36538767	KJ ENERGY, LLC	New Drill	10130
8/26/22	PANOLA	36538781	SPONTE OPERATING, INC.	New Drill	12000
8/29/22	ANGELINA	00530472	AETHON ENERGY OPERATING LLC	New Drill	17500
8/29/22	ANGELINA	00530473	AETHON ENERGY OPERATING LLC	New Drill	17500
8/29/22	SHELBY	41931846	LEGACY RESERVES OPERATING LP	New Drill	12500
8/30/22	RUSK	40132549	CRATON OPERATING LLC	Recompletion	7200
8/30/22	CASS	06730864	ROSE CITY RESOURCES, LLC	New Drill	12100
8/31/22	HARRISON	20333286	RFE OPERATING, LLC	Recompletion	5877

See Map and Louisiana Permits on previous pages.

CALL FOR PAPERS



Be There!

APRIL 23-25, 2023
NORRIS CONFERENCE CENTER

**SUBMIT A TALK OR POSTER ABSTRACT
DEADLINE: DECEMBER 15, 2022**



www.geogulf2023.org

**72nd Annual Meeting
of the Gulf Coast Association
of Geological Societies
(GCAGS)**

THEMES/SESSIONS

Gulf of Mexico Power Plays

Eagle Ford, Haynesville, Austin Chalk, Smackover
Research and Field Studies

GOM Shelf and Deepwater

Wilcox, Miocene, Plio-Pleistocene, Norphlet

Optimizing Reservoir Assets

Unconventional Play Landing Zones, Source Rocks

Mexico and Caribbean Plays

Central America's Fields and New Plays

Transformative Technologies

Data Analytics, Computer Technology,
Seismic Interpretation, CCUS, Geothermal

Business, Profits, Strategies

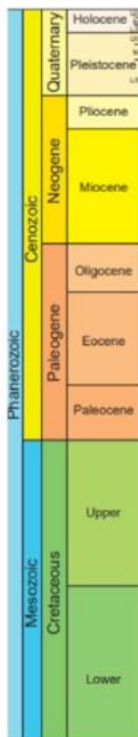
Geo-startups, Ideas, Disruptors

HGS History- 100 Years in the Gulf



linda.sternbach@gmail.com

www.geogulf2023.org





LOUISIANA BOARD OF PROFESSIONAL GEOSCIENTISTS

Geoscientist Licensing in Louisiana

Did you know?

When you attend a monthly Shreveport Geological Society meeting, you earn one hour of continuing education credit for your LBOPG license. This is a simple and enjoyable way to get your hours! You can also find links to continuing education ethics credit courses at <https://sgs1.org/continuing-education/>.

Ready to track your CE hours?

Visit the LBOPG website today to download your continuing education log template lbopg.org/resources/continuing-education

	A	B	C	D	E	F	G	H	I	J	K	L
1	Name:					PG License #:		Renewal Date:				
3	Date	Activity				Sponsor Organization			Credits			
4		Code*	Title	Instructor	Name	Location	Time	CEU	PDH			
5												
6												
7												
8												
9												
10												
11												
12												
13												
14												
15												
16												
17												
18												
19												
20												
21	Total PDH claimed this renewal period:										0	
22	PDH carry over from previous year claimed for this report:											
23	Total PDH claimed to meet minimum requirements:										0	
24	PDH to be carried over to next year's report:											
26	Audits will be conducted randomly and/or as needed to confirm CE activities each year.											
27	It is your responsibility to collect and maintain proof of attendance and completion of CE activities in case an audit is called.											
28	*Code		Conversion of =	PDH		Minimum hrs. to renew	Maximum hrs. Allowed/Period					
29	Participant Credit	P	Each Direct Hour =	1		14 Geoscience Credits	Society Meetings	12				
30	Instructor Credit	I	CEU, Papers, etc. =	10		1 Ethics Credits	Self directed Coursework	5				
31	Authorship Credit	A	College Qtr. Hr. =	10		15 Total	Authorship - Paper	10				
32	Meeting Credit	M	Semester Hour =	15			Authorship - Book	45				
33	Ethics Credit	E	Instructor =	3XPDH								
34												
35	This form was intended to be a one (1) letter size page, i.e. one (1) years record of CE activity or 15 PDH.											
36	It is recommended that additional data be entered into a second (or third, etc.) worksheet in this spread sheet workbook.											
37	An entire (blank) form can then be copied into the new worksheet and the sheet tab named as the report year.											
38	This workbook has two (2) new sheets included as examples so you can start the process of recording your CE activity.											
39												

Like what you see?

Fill out and mail in this form or find it online at SGS1.org.

You can renew online instead
of filling out this card!
★ www.sgs1.org ★

Active \$25 / yr	
Associate \$25 / yr	
Honorary \$0 / yr	
Student \$5 / yr	
Optional Donation SGS Scholarship Fund	
Optional Donation Faithful Friends	
Total Payment	

NAME (Please Print) _____

Check if new applicant or change of address.

DATE _____

APPLICANT OR MEMBER PLEASE TYPE OR PRINT

LAST NAME	FIRST	INITIAL	NICKNAME			
COMPANY			POSITION OR TITLE			
COMPANY MAILING ADDRESS	CITY	STATE	ZIP	COMPANY PHONE		
HOME ADDRESS	CITY	STATE	ZIP	HOME PHONE		
FAX NUMBER	E-MAIL ADDRESS			CELL PHONE		
SCHOOL	DEGREE	MAJOR	YEAR			
PROFESSIONAL AFFILIATIONS	AAPG <input type="checkbox"/> APGS <input type="checkbox"/>	GSA <input type="checkbox"/> PS <input type="checkbox"/>	SEG <input type="checkbox"/> AGI <input type="checkbox"/>	SEPM <input type="checkbox"/> SIPES <input type="checkbox"/>	AIME <input type="checkbox"/> SPE <input type="checkbox"/>	SPWLA <input type="checkbox"/> OTHER _____

OUTLINE OF EXPERIENCE _____
 SPOUSE'S NAME _____

PREFERRED MAILING ADDRESS
 HOME BUSINESS
 EMAIL ME THE NEWSLETTER
(no printed copy will be mailed)

QUALIFICATIONS FROM BY-LAWS

In order to be eligible for active membership, an applicant shall be engaged in the practice or teaching of geology or related sciences.

In order to be an associate member, an applicant shall be interested in geological science but not actively engaged in the practice or teaching of geology or related sciences.

To The Executive Board:

I hereby apply for ACTIVE ASSOCIATE membership in SHREVEPORT GEOLOGICAL SOCIETY and pledge myself to abide by its Constitution and By-laws.

Date: _____ Signature: _____

SPACE BELOW TO BE USED FOR PROCESSING ONLY

Membership Committee

Received: _____
 Approved for: Active
 Associate
 Student

Executive Board

Approved: _____ SECRETARY
 Date: _____

SGS HONORARY MEMBERS

James D. Aimer*
William E. Bancroft*
Michael W. Beckman*
Orville Roger Berg
David L. Billingsley, Jr.
B. W. Blanpied*
Prentis L. Boatner, Jr.*
Alan L. Brittain
John Franks*
Victor P. Grage*
John C. Grunau*
J. Frank Harrell*
James B. Harris*
William E. Hayes*
Roy T. Hazzard*
Dr. Leo Hermann*
Kevin B. Hill
Charles J. Hoke*
Perry G. Holloway*
Walter E. Hopper*
E. B. Hutson*
L. Lee Kincade*
Joseph O. Laird*
Paul Todd Landes, Jr.*

W. W. Lincoln*
William R. Meaney
Clarence L. Moody*
John T. Palmer*
Thomas H. Philpott*
William M. Plaster*
Gene R. Robinson*
C. Lane Sartor*
Erwin W. Saye*
Fred R. Schroeder*
C. Ray Scurlock
Walter H. Spears*
William C. Spooner*
George D. Thomas*
Arthur H. Trowbridge
Henry J. Tyler*
Claude N. Valerius*
Warren B. Weeks*
Percy J. Wheeler, Jr.
B. Ross White*
R. M. Wilson*

(* Deceased)