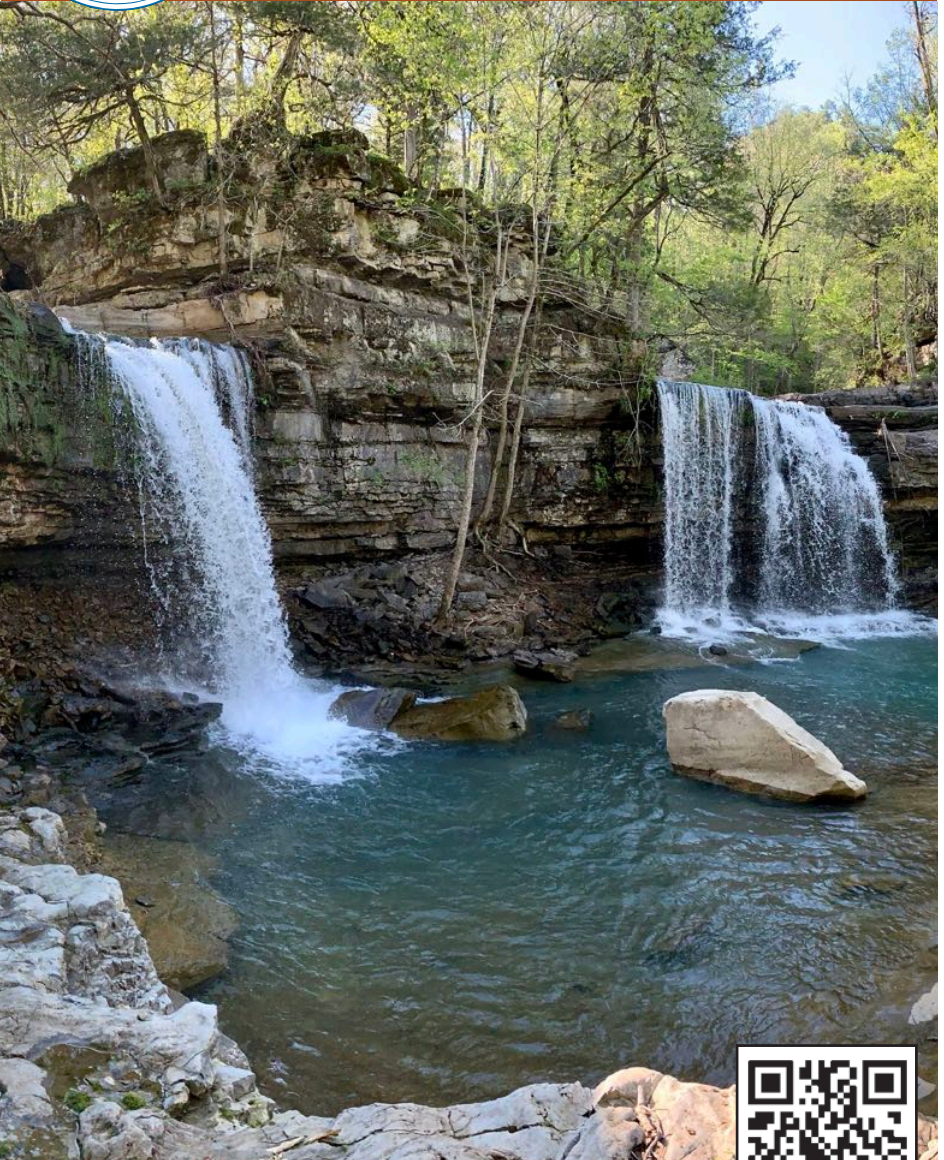




# Shreveport Geological Society **NEWSLETTER**

Volume 68, No. 2

October 2023



**Gas of Life p. 7**  
**Latest Permits p. 23**  
**Memorials p. 27-31**



SGS1.ORG

# Message from the President

As we begin October, temperatures have begun to moderate around the Ark-La-Tex, and that means it's time for the Red River Revel! As most of you know, each year the Shreveport Geological Society participates in the Revel by organizing the Mock Geological Dig, which is sponsored by Security Exploration. Rocks, minerals, and fossils are scattered in a giant sand box that is roped off in squares. Volunteers are always needed for this event and SGS members have made a huge contribution over the years in providing staffing. This year's Revel will be held in downtown Shreveport from September 30th – October 8th. All volunteers receive a commemorative t-shirt! Please visit [SGS1.org](http://SGS1.org) to sign up. Carrie Salinas and Bezany Branton always do an incredible job organizing this event so let's help them out by showing our support and volunteering.

By now you have hopefully signed up for the 30th Annual ALTAPL-SGS Golf Tournament which will be held on Friday, October 6, 2023, at East Ridge Country Club. Claire Iles and Bobby Raines have done a great job putting together what promises to be another well-attended and fun tournament. The afternoon flight is full but there are a few slots available in the morning flight. Breakfast will be served at 7:00 a.m. followed by a shotgun start at 8 a.m. Lunch will follow at 11:30 a.m. with a shotgun start at 1:00 p.m. for the afternoon flight. Also, there will be an evening of food, beverages, and awards with entertainment provided by Sonnyboy Rambin.

Our September luncheon meeting was well attended and a success! Amy Close with Digital Operating Company gave us a presentation on the geology and drilling activity in the Permian basin of

West Texas and New Mexico. A few interesting facts from her presentation: 20,462 new wells (mainly horizontal) were drilled over the last 3 years; the average new well has an IP of 928 BOPD; and it is estimated that \$230 Billion in property transactions will take place in 2023! Everyone's participation was greatly appreciated. Please plan to attend as many meetings as you can this year, as we have a great line-up of speakers in place.

As mentioned in last month's column, our October meeting will be a dinner meeting instead of our usual luncheon. Our speaker for the evening will be Dr. William Happer, Professor of Physics, Emeritus, at Princeton University specializing in the study of atomic physics. The title of his presentation will be "What Happened to all the CO<sub>2</sub>". He will explain climate change and global warming in a way that will help all listeners understand. From 1991 to 1993, William served in President George H. W. Bush's administration as the director of energy research in the Department of Energy, where he oversaw a basic research budget of roughly \$3 Billion. Please mark Friday evening, October 20th at 6:30 p.m. on your calendars. Bring your spouse, significant other and guests for a scintillating talk on climate with great food prepared by Chef Wesley and his team at the Petroleum Club in downtown Shreveport. Kevin Hill of Hill Geophysical Consulting has graciously agreed to provide a white and/or red wine to pair with your meal! See the official dinner announcement in this bulletin for reservation information and dinner pricing.

Lastly, in honor of our upcoming 100th year anniversary of the Shreveport Geological Society, we will have a slide show running at the October dinner meeting with historical photos of SGS events and members over the years. Please email any old photos you have to Annie Green. Annie's email address is: [agreen@naguss.com](mailto:agreen@naguss.com); the images must be high resolution in order to show up clearly on the projection screen. Again, come enjoy what promises to be a great evening of food, fun, and fellowship!

All the Best!

**Kurt**

## Faithful Friends 2023 – 2024

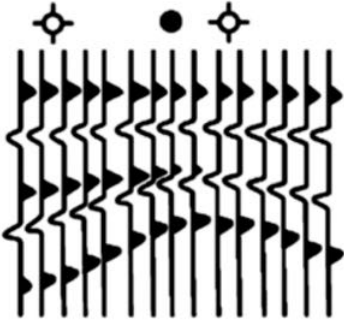
Steve White  
Joseph McDuff  
Mark Moore  
William Downs  
Scott Comegys  
W. David Hart  
Ralph Richardson  
Joe R. White, Jr.  
Raines and Associates, LLC  
Grigsby Petroleum  
Milbird Resources, LLC  
Louise F. Pearce,  
Attorney at Law, LLC  
Marlin Exploration, LLC  
Saye Energy, LLC  
Milestone Energy, LLC  
William Meaney  
Richard Swindell  
Anthony Spano  
T W McGuire & Associates  
Brittain Geoconsulting  
Services  
Kingwood Exploration  
Matthew Chumley

Hill Geophysical Consulting,  
LLC  
Ian M. Byram  
Williamson Oil and Gas, Inc.  
Bezany Branton  
Greg McCarty  
Toledo Services  
Charles Gerard  
Roger Berg  
Muslow Oil and Gas, Inc.  
Sugar Creek Producing  
Company, LLC  
Wild Oak Gas Company, Inc.  
David L. Billingsley, Jr.  
Craig Barclay  
Johnson Energy Resources,  
LLC  
River Rouge Minerals  
Stuart L. Oden  
Stroud Petroleum, Inc.  
John E. Atkins  
Johnnie P. Wanger  
Scott Caswell  
Annie Green

***Thank You!***

To be a Faithful Friend for 2023-2024,  
please contact Bezany Branton.

# Hill Geophysical Consulting



**Kevin B. Hill**

*Integrating Geophysical Technology  
with Geology*

**What's Under Your  
Feet? Find out:  
HILLGEO.COM**



415 TEXAS ST., SUITE 200  
SHREVEPORT, LA 71101

**318.221.3329**  
**kevin@hillgeo.com**



## Camterra Resources

**Main Office**

2615 East End Blvd. South  
Marshall, Texas 75672  
Telephone: (903) 938-9949  
Fax: (903) 935-0521

**Dallas Office**

100 Crescent Court  
Suite 1800  
Dallas, TX 75201  
Telephone: (214) 310-0512

[www.camterra.com](http://www.camterra.com)

Chief Executive Officer: Zach Carlile

President: Paul Marchand

Land Manager/General Counsel: Allen Staggers

Asst. General Counsel: Pam Johnson

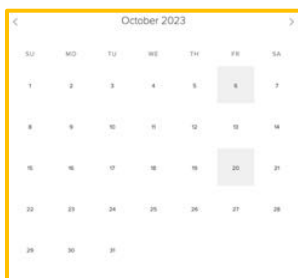
Director of Operations and Engineering: Jim Larkin

Sr. Landman: Jason Derebery

Landman/Gas Marketing/Regulatory: Josh Searle

Seeking Opportunities in Texas, Louisiana, Arkansas, Mississippi, and New Mexico

# Calendar of Events



View  
this interactive calendar at [SGS1.org](https://www.sgs1.org)

September 30 - October 8

Mock Dig at the Red River Revel – Volunteers Needed

October 6

30th Annual ALTAPL/SGS Golf Tournament  
at East Ridge Country Club

October 20

Dinner Meeting: William Happer presents

"Carbon Dioxide, the Gas of Life"

Petroleum Club, 6:00PM

\$40 per person

## ***On the Cover:***

"Twin Falls" in the Richland Creek Wilderness Area, Northwestern Arkansas. Located in the Ozark Mountains, Mississippian limestones crop out in the valleys and Pennsylvanian age sandstones cap the hillsides. Photographed by Kurt Ley.

## ***Interior Art:***

Page 1 "Fabulous Finds Series No. 38" (*detail*) by Christine Bailey, courtesy of the Bailey Art Gallery at 214 Texas Street.

Page 7 "In the Canyon" (*detail*) by Jerry Wray,  
For sale at Waddell's Gallery, 1200 Marshall Street.

Email news and art to: [1RachelMcNerney@gmail.com](mailto:1RachelMcNerney@gmail.com)



## Thomas C. Wyche

CERTIFIED PETROLEUM GEOLOGIST

*Horizontal & Vertical Projects*  
E.Tx., N.La., S.Ark.

333 Texas St., Suite 703  
Shreveport, LA 71101  
318.465.2944  
geo1tcw@gmail.com

AAPG-CPG

## Cypress Operating, Inc.



**STEVEN A. SINGLETARY**  
**BEN ROBINSON**

*Petroleum Geologists*

Office: (318) 424-2031  
Fax: (318) 425-8140

330 Marshall Street, Suite 930  
Shreveport, LA 71101



EXPLORATION, L.L.C.

401 Edwards Street, Suite 1200  
Shreveport, LA 71101

P.O. Box 1367  
Shreveport, LA 71164

office: (318) 222-8406  
fax: (318) 222-6061  
email: mei@marlinexploration.com

**Jon Q=Petersen**  
President

**S. Cody Lenert**  
Geologist

**Autie T. Orjias**  
V.P./Land Manager

**Ryan Q=Petersen**  
Land

**Dean Giles**  
Secretary/Treasurer



**SEI** Seismic Exchange, Inc.

Dallas • Denver • Houston • New Orleans • Oklahoma City  
Corpus Christi • Tulsa

**Layne Williams**  
*New Orleans Region*  
*Marketing Manager*

201 St. Charles Avenue, Suite 4300  
New Orleans, LA 70170-4300  
Direct: 504-510-2508 Fax: 504-581-9591  
Cell: 504-458-3056  
E-MAIL: lwilliams@seismicexchange.com

# The October Meeting ~Dinner~

*Make your*  
**RESERVATION**

**William Happer**

presents

“Carbon Dioxide, the Gas of Life”

**Friday, October 20**

6:00PM Petroleum Club of Shreveport

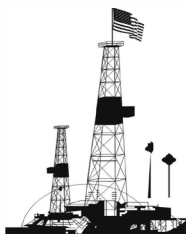
\$40 per person

includes food, wine, tax, and tip!

We encourage members to  
**invite guests, spouses, and friends**  
to any of our meetings.

If you'd like a seat, kindly **RSVP**  
by **Friday, October 13** at [SGS1.org](http://SGS1.org)





# PALMER

PETROLEUM, INC.

Exploration and Development

Operations

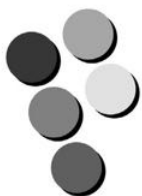
Oil and Gas Investments

425 Ashley Ridge Blvd., Suite 360  
Shreveport, Louisiana 71106

Phone: (318) 222-0517

[www.palmerpetro.com](http://www.palmerpetro.com)

Fax: (318) 424-3256



# Paragon

P R E S S

**DESIGN PRINT MAIL**

**318-868-3351**

**[www.ParagonPress.net](http://www.ParagonPress.net)**

## Abstract

The much-vilified gas, carbon dioxide or CO<sub>2</sub>, is in fact a benefit to life on Earth. The greening of Earth from the modest increases of CO<sub>2</sub> over the past century are already evident from satellite monitoring of Earth's surface vegetation. CO<sub>2</sub> is indeed a greenhouse gas, but its effects on Earth's climate will be very small and benign. The basic scientific data that supports these truths will be discussed.

## Biography

**William (Will) Happer**, the Cyrus Fogg Bracket Professor of Physics and one of the pioneers in the field of optically polarized atoms, is transferring to emeritus status at the end of this academic year. Will is known for developing rigorous theories to analyze his elegant atomic physics experiments as well as for extensive service to Princeton and the U.S. government. His research has initiated several vibrant fields outside of atomic physics.

Will was born in Vellore, India, on July 27, 1939. He and his mother, Gladys Morgan Happer, a medical missionary, soon came back to the United States while his father, Colonel William Happer, served with the Indian Army in the Middle East and North Africa during World War II. Will was on one of the few ships from India to the United States that was not sunk by U-boats. Near the end of the war, he lived in Oak Ridge, Tennessee, where his mother served as the first medical doctor at the Oak Ridge National Laboratory. The lab was started as a part of the Manhattan Project. The excitement of this childhood experience probably led to Will's career in physics.



## MILESTONE ENERGY, LLC

Oil & Gas Exploration and Development

**Joseph A. Lott**

Geologist / Managing Partner

**Zach Kelly**  
Geologist

**Zach McDonald**  
Geologist

**Thomas A. Giles**  
Land Manager

333 Texas Street, Suite 516  
Shreveport, Louisiana 71101  
jlott100@bellsouth.net

Office: 318.212.0470  
Fax: 318.212.0469

- Looking for Prospects
- Geophysical Consultant
- Landmark Graphics Corp. Software
- Synthetic Seismograms, modeling and cross sections



- Digitizing capability
- 2-D & 3-D Seismic Acquisition, Processing & Interpretation
- SeisVision 2-D & 3-D interpretation and mapping software

**Bobby Ben Taylor - President**

O: 120 S Broadway, Suite 102  
Tyler, Texas 75702  
Mobile: (903) 521-3182

H: 7130 Holly Square Court  
Tyler, Texas 75703  
Email: taylor@webfoxmail.com

**LOOKING FOR PROSPECTS**

*Let me tailor your geophysical needs.*

## MUSLOW OIL & GAS, INC.

330 Marshall Street  
Suite 628  
Shreveport, LA 71101

**Eric Weiss**  
*President*

(318) 221-8694  
Fax: (318) 227-2106

## R. LACY / GRAIN ENERGY

*Oil and Gas Investments  
Exploration and Development*

222 EAST TYLER STREET  
LONGVIEW, TX 75601  
903-758-8276 (O)

**Chris Bresch**  
*V.P. Exploration*  
cbresch@rlacy.com

**Hunter Brumble**  
*Staff Geoscientist*  
hbrumble@rlacy.com

**Scott Caswell**  
*Sr. Geophysicist/Geoscientist*  
scaswell@rlacy.com

Will received a B.S. in physics from the University of North Carolina in 1960. Under the supervision of Professor Donald Hamilton, he received his Ph.D. in physics from Princeton University in 1964. His thesis focused on measurements of spins and magnetic moments of radioactive nuclei, a topic of considerable interest at the time because of its connection with the nuclear shell model. He began his academic career in 1964 at Columbia University's Department of Physics, where he was privileged to get to know his "scientific grandfather," I. I. Rabi, and where he became interested in applications of optically polarized atoms in atomic and nuclear physics.

Will's early work focused on the spin polarization of alkali-metal atoms (sodium, potassium, rubidium, cesium). He was one of the first to investigate the effects of light with a wavelength slightly different from the atomic resonance, and he studied several effects including the rotation of the light polarization and Raman atomic transitions. These have become mainstays of modern atomic physics. In what has become a trademark of all his research, Will combined experimental measurements with the development of rigorous theoretical models and simple intuitive explanations. He also studied the unique properties of spin relaxation collisions between alkali-metal atoms, which led, 30 years later, to the development of precision alkali-metal clocks and magnetometers. In addition to his scientific work at Columbia, he served as a co-director and director of the Columbia Radiation Laboratory that was established by I. I. Rabi during World War II.

After arriving in Princeton as a professor of physics in 1980, Will began to investigate methods for polarizing nuclear spins of noble gas atoms by spin-exchange collisions with alkali-metal atoms, an effect that was first observed by Professor Thomas Carver at Princeton. Will



*Craig C. Barclay*

Petroleum Geologist, L.L.C.

Mobile (318) 426-2536  
craigcbarclay@gmail.com

10857 Sunrise Point • Shreveport, LA 71106

**WIRELINE**  
**LOGGING**  
**SOLUTIONS**

**Richard "Dick" Swindell**  
*Technical Sales*

Tyler, Texas  
Mobile: 903.253.6226  
richard.swindell@wirelinelogs.com  
wirelinelogs.com

**T. W. MCGUIRE & ASSOCIATES, INC.**

*Registered Petroleum Engineers*

416 Travis St., Suite 1104 • P. O. Box 1763  
Shreveport, LA 71166  
(318) 222-0761  
(318) 222-0799 Fax

**Robert T. Maranto, P.E.**    **John M. Eppinette**  
robert@twmcguire.net    john@twmcguire.net

**Baker Hughes** 

**Jim Hankla**  
Sales, Southern US

Mobile: 903.312.8500  
James.Hankla@bakerhughes.com



**416 TRAVIS STREET ♦ SUITE 600**  
**SHREVEPORT, LA 71101**  
**PHONE ♦ (318) 425-0101**  
**FAX ♦ (318) 425-2211**

**GARY ABRAMS**  
**JOHN STROUD**  
**GEOLOGISTS**

**JHM, LLC**  
OIL AND GAS EXPLORATION

**Joe McDuff**  
Geologist

351 Chapel Loop                      504.756.2000  
Mandeville, LA 70471              jmcduff@att.net

**DOWNNS**

**ENERGY ACQUISITIONS, LLC**

**318-465-1302**  
2025 Woodberry Avenue  
Shreveport, LA 71106

was one of the first to realize the importance of van der Waals molecule formation during collisions between atoms, and he developed a detailed theory of spin-exchange optical pumping. Based on this theory and detailed experimental studies, he devised the crucial experimental techniques for producing large quantities of noble gases with high nuclear polarization. Such “hyperpolarized” gases have found many diverse applications.

An initial motivation for producing large nuclear spin polarizations was to use  $^3\text{He}$  (or Helium-3) as a polarized target in high-energy scattering experiments in order to investigate nuclear interactions and spin structure. The techniques developed in Happer’s group have been used in electron scattering experiments at the Stanford Linear Accelerator Center and are now being used at the Thomas Jefferson National Accelerator Facility in a variety of nuclear physics experiments.

Once large quantities of polarized noble gases could be produced, it became apparent that they would find many uses outside of pure physics. One of the most dramatic applications is the magnetic resonance imaging of the lungs. Since noble gases are generally inert, they can be safely inhaled, leading to beautiful images of lung air spaces that could not be obtained by any other means. Will and his collaborators started a company to commercialize this technology, which eventually became part of General Electric. Today, dozens of research groups in the world are exploring biological applications of nuclear spin polarized noble gases.

Will is also known for his extensive government service. Since 1976, he has been a member of JASON, a group of scientists and engineers who advise the federal government on matters of defense, intelligence, energy policy, and other technical problems. While

**Kingwood Exploration, LLC**  
**Oil & Gas Exploration**  
**and Production**



**Kurt M. Ley**

Exploration Manager & Partner

**Robert E. Braswell**

Engineering/Operations Manager & Partner

416 Travis St., Suite 1100  
Shreveport, LA 71101

Phone: 318-946-8585

Fax: 318-946-8287

kurt.ley@kingwoodexploration.com

robert.braswell@kingwoodexploration.com



*Established by G.M. Anderson*

**333 TEXAS ST., SUITE 2020**

**SHREVEPORT, LA 71101-5357**

**Phone: (318) 227-2000**

**Fax: (318) 425-5935**



★ Geological ★ Environmental

**FOR ALL YOUR**  
**GEOLOGICAL AND**  
**ENVIRONMENTAL NEEDS**

**866-463-5600**

20 Ford Road  
Many, LA 71449

**Security Exploration, Inc.**

8509 Line Avenue  
Shreveport, LA 71106



J. Stafford Comegys  
President

Donna Walker  
Geologist

Barbara Lyles  
Office Manager

**OIL & GAS EXPLORATION**

**Tel: (318) 222-1066**

**Fax: (318) 222-4932**

participating in the 1982 JASON summer study, he proposed to use a thin sodium layer in the upper atmosphere as a source of an artificial guide star to correct the “seeing” distortions in optical telescopes due to the effects of atmospheric turbulence. The sodium layer is excited from the ground with a laser and adaptive optics are used with real-time feed-back to cancel the distortions. Today, most large optical telescopes use such laser guide-star systems. From 1987 to 1990, Will served as chair of the steering committee of JASON.

From 1991 to 1993, Will served in President George H. W. Bush’s administration as the director of energy research in the Department of Energy, where he oversaw a basic research budget of roughly \$3 billion. His responsibilities included directing much of the federal funding for high energy and nuclear physics, materials science, magnetic confinement fusion, environmental science, the human genome project, and other areas. More recently, he chaired the National Academy of Sciences’ Panel on Nuclear and Radiological Issues and the National Research Council’s standing committee on improvised explosive devices.

His University service includes being the chair of the University Research Board from 1995 to 2005. He has published over 200 scientific papers. He is a fellow of the American Physical Society and American Association for the Advancement of Science, and a member of the American Academy of Arts and Sciences, the National Academy of Sciences, and the American Philosophical Society. He was awarded the 1997 Broida Prize and the 1999 Davisson-Germer Prize of the American Physical Society.





HOST OF THE REGULAR LUNCHEON MEETINGS FOR THE  
SHREVEPORT GEOLOGICAL SOCIETY

**Lunch Buffet**  
MONDAY - FRIDAY

**Newly Renovated  
Member's Lounge**  
MONDAY - FRIDAY  
AFTERNOONS

416 TRAVIS ST  
15TH & 16TH FLOOR  
(318) 425-4251



**David Meadows**  
**Manager**

Mid South Tower Bldg.  
416 Travis Street, Suite 1414  
Shreveport, LA 71101

Phone: 318-425-7617  
Fax: 318-425-1385  
Email: [jmexploration@comcast.net](mailto:jmexploration@comcast.net)

# BRAMMER

ENGINEERING, INC.

**Services:**

- Drilling
- Completion
- Construction
- Production
- HSE
- Regulatory
- Land
- Accounting
- Risk Management
- Information Systems



[www.brammer.com](http://www.brammer.com)  
318.429.2345 o • 318.429.2340 f  
401 Edwards Street, Suite 1510, Shreveport, LA 71101

# WLS

CORPORATION

OIL & GAS  
EXPLORATION & PRODUCTION

**Wayne L. Simpson**  
President

**Philip Davis**  
Geologist

416 Travis Street, Suite 1006  
Shreveport, Louisiana 71101

Office: (318) 425-2978  
Fax: (318) 425-3166

# Mock Dig Volunteers Needed

Each year the Shreveport Geological Society participates in the Red River Revel by organizing the Mock Geological Dig, courtesy of Security Exploration. SGS members volunteer to introduce young people to the excitement of scientific discovery. Rocks, minerals and fossils are scattered in a giant sand box that is roped off in squares, just like a real geological dig!

Children are encouraged to claim a section and hunt for quartz, pyrite, sharks' teeth, and polished rocks for 15-30 minutes, after which SGS members tell them about what they found and get to take home. Volunteers with or without a geology background can help reseed the dig. Young adults high-school- to college-aged are encouraged to volunteer at the dig along with SGS members to learn more about rocks and minerals and to understand how important science is in our community.

Please volunteer for a shift that fits your schedule! You will also receive a commemorative t-shirt. More details coming soon.

The Mock Dig will be open  
**September 30 – October 8**



## **BARROW-SHAVER RESOURCES COMPANY**

Oil & Gas Exploration & Development

**Scott Owen Shaver**

Managing Partner and Exploration Manager

903-593-5221 Office

903-593-1692 Fax

903-561-4711 Home

903-582-4711 Farm

903-245-4999 Mobile

977 Pruitt Place

Tyler, Texas 75703

sos-bsr@tyler.net



Drilling Contractor

Oil & Gas Operator

Turnkey Services

Well Service & Workover

Working Interest Participant

**318-992-4111**

**P. O. Box 2990, Jena, LA 71342**

**justissoil.com**

## **CAPLIS FORESTRY, LLC**

**JEFFREY W. CAPLIS**

**-CONSULTING FORESTER-**

*-complete forestry services-*

- Timber Appraisals • Timber Management • Timber Cruising •
- Damage Appraisals • Tree Planting •

**CELL: 318-617-9016**

**OFFICE: 318-752-3662**

**586 CAPLIS SLIGO RD.**

**BOSSIER CITY, LA 71112**

**B.S. LOUISIANA TECH: SCHOOL OF FORESTRY**

# **STROUD PRODUCTION, LLC**

333 Texas Street, Suite 860

Shreveport, Louisiana 71101-5302

Voice: (318) 429-2260

Fax: (318) 429 2255

Email: ras@spllc.com

## **Mike Rogers Drilling Co., Inc.**

Drilling & Interest Participation

**MIKE ROGERS, PRESIDENT**

**CRAIG ROGERS, VICE PRESIDENT**

Office: 870-234-2356 • Fax: 870-234-7487

1708 N. Vine Street • P. O. Box 126 • Magnolia, AR 71754  
email: mrdc1981@gmail.com



*Quality Geophysics*

## **Dillon LaFoy**

Sr. Sales Representative

[www.hardinintl.com](http://www.hardinintl.com)

Bus. 972.312.9221 x112

Cell. 972.814.4617

Fax. 972.312.9226

[dlafoy@hardinintl.com](mailto:dlafoy@hardinintl.com)

Hardin International  
Processing, Inc.

5300 Democracy Dr.

Suite 100

Plano, Texas 75024

# 30th ANNUAL ALTAPL-SGS GOLF TOURNAMENT

P.O. Box 1296  
Shreveport, LA 71163

## 2023 Tournament Committee

Claire Iles  
(text)318-347-0376

Hunter Temple  
318-243-1134

Crystal Dupuy  
318-840-4088

John Barr  
318-588-6570

Preston Smith  
318-537-0706

Email us at  
[golf.altapl@gmail.com](mailto:golf.altapl@gmail.com)

Dear Friends and Sponsors of the Shreveport Geological and Ark-La-Tex Landman Societies:

It's that time of the year again to announce the upcoming **SGS/ALTAPL Golf Tournament** to be held at **East Ridge Country Club** on **Friday, October 6, 2023**. The event will kick off with breakfast at 7:00 a.m. followed by a shotgun start at 8:00 a.m. Lunch will be at 11:30 a.m. and proceed with a shotgun start at 1:00 p.m. followed by an evening of food, beverages, awards, and door prizes.

Please consider and respond as soon as possible with your much-appreciated sponsorship, so a realistic budget can be proposed by our planning committee. A prompt response will also assure that your contribution will be affirmed and recognized by all in attendance. All sponsors will be included on a banner which will be displayed at check-in and at the awards reception.

### Potential Sponsorship Categories

Sponsor:	all gift amounts accepted and appreciated
Hole Sponsor:	\$500
Lunch Sponsor:	\$1,500
Tournament Hat Sponsor:	\$2,000
Awards Dinner Sponsor:	\$3,000
Tournament Shirt Sponsor:	\$5,000

Also, if your company has merchandise which they would like to add as tee gifts please send them (240 count) to the address listed below.

**PLEASE DIRECT ALL FINANCIAL CONTRIBUTIONS TO:**

**ALTAPL/SGS Golf Tournament  
P.O. Box 1296  
Shreveport, LA 71163**

**\*\*\* Make checks payable to the ALTAPL and state in the Memo  
your desired sponsorship category \*\*\***

We look forward to your involvement not only in sponsorship, but also in the camaraderie of the golf tournament. If you have any questions please call us at the numbers listed or email us at [golf.altapl@gmail.com](mailto:golf.altapl@gmail.com).

Sincerely,

*Your 2023 Tournament Committee*



**Shreveport Petroleum Data Assn., Inc.**

**333 Texas Street, Suite 900**

**Shreveport, LA 71101**

**(318) 429-2237**

**Fax (318) 429-2441**

**Website : [www.spdalogs.org](http://www.spdalogs.org)**

**Natalie Wingrove, Manager**

**318-429-2236**

**[natalie.wingrove@spdalogs.org](mailto:natalie.wingrove@spdalogs.org)**



**Bobby E. Jelks**  
*President*

**Faith N. Gilbert**  
*CFO*

**Edward Yarborough**  
*Exploration Manager*

**James Light**  
*Land Manager*

P.O. Box 7726  
Shreveport, LA 71137-7726  
Phone: (318) 221-2688  
Fax: (318) 459-2935



**Kalmbach**  
**Production Company, LLC**

**Sam Kalmbach**  
**Geologist**

400 Travis Street, Ste. 516 office: (318) 424-6566  
Shreveport, LA 71101 cell (318) 470-9977  
e-mail: [sam.geo.kpc@gmail.com](mailto:sam.geo.kpc@gmail.com)

**Joe R. White, Jr.**

**Petroleum Geologist**

8505 Dogwood Trail  
Haughton, LA 71037  
Cell. 318-423-9828  
Hm. 318-949-3539  
Available for Consulting

AAPG CPG #5580  
MS RPG #0097  
LA CPG #345  
[Jwhite1362@aol.com](mailto:Jwhite1362@aol.com)  
[Joerjr@gmail.com](mailto:Joerjr@gmail.com)

**GRIGSBY PETROLEUM, INC.**

**Oil & Gas Exploration  
and Production**

333 Texas St., Suite 2285  
Shreveport, LA 71101  
Phone (318) 425-5306  
Fax (318) 425-3733

**David L. Billingsley, Jr.**

**Certified Petroleum Geologist**

400 Travis Street, Suite 1230  
Shreveport, LA 71101  
[DLBJR1@aol.com](mailto:DLBJR1@aol.com)

Cell Phone  
(318) 426-4320

**MILBIRD RESOURCES, LLC**

*Oil & Gas Exploration*

**Maurice N. Birdwell**

**Managing Partner**

**AAPG Certified Petroleum Geologist**  
**Reg. Prof. Geol. Ark. La. Miss. Tex**

2043 Oak Ridge Drive  
Pearl, MS 39208

**601.936.6939**  
[mnbirdwell@comcast.net](mailto:mnbirdwell@comcast.net)

**2023 ALTAPL/SGS**  
**SPONSOR FORM**

Friday, September 6, 2023

Shotgun Start at 8:00 A.M. and 1:00 P.M.

East Ridge Country Club

SPONSOR:

All gift amounts

accepted and appreciated

\$ \_\_\_\_\_

**2023 Tournament  
Committee**

Claire Iles  
(text) 318-347-0376  
[iles\\_claire@yahoo.com](mailto:iles_claire@yahoo.com)

HOLE SPONSOR:

\$500.00

\$ \_\_\_\_\_

Hunter Temple  
318-243-1134

LUNCH SPONSOR:

\$1,500.00

\$ \_\_\_\_\_

Crystal Dupuy  
318-840-4088

AWARDS DINNER SPONSOR:

\$3,000.00

\$ \_\_\_\_\_

John Barr  
318-588-6570

TOURNAMENT HAT SPONSOR:

\$2,000.00

\$ \_\_\_\_\_

Preston Smith  
318-537-0706

TOURNAMENT SHIRT SPONSOR:

\$5,000.00

\$ \_\_\_\_\_

If your company has merchandise which they would like to add as tee gifts please send them (240 count) to the address listed below.

Email us at  
[golf.altapl@gmail.com](mailto:golf.altapl@gmail.com)

**PLEASE DIRECT ALL FINANCIAL  
CONTRIBUTIONS TO:**

**ALTAPL/SGS Golf Tournament  
416 Travis Street, Suite 1401  
Shreveport, LA 71101**

**\*\*\* Make checks payable to the ALTAPL and state in the Memo  
your desired sponsorship category \*\*\***



# JON E. SAYE

## PETROLEUM GEOLOGIST

Office: 318-221-4504  
Fax: 318-221-4516  
Cell: 318-458-1515

1015 Mid South Twr. • P. O. Box 137  
Shreveport, LA 71161

[jsaye@prodigy.net](mailto:jsaye@prodigy.net)

## COUTRET & ASSOC., INC.

**Petroleum Reservoir Engineers**  
Property Evaluation, Reservoir Engineering  
Fluid Injection, Property Management

**Louisiana Tower**  
401 Edwards Street  
Shreveport, LA 71101

**Telephone: (318) 221-0482**  
**Fax: (318) 221-3202**

**E-mail: [rmcgowen@coutret.com](mailto:rmcgowen@coutret.com)**

ODEN & ASSOCIATES, LLC

*Oil and Gas Exploration*

Phone: 318-222-2400

Fax: 318-226-0840



## ALAN SCHLICHTEMIER

*Geologist*

416 Travis Street, Ste. 400  
Shreveport, LA 71101  
[odenassoc@bellsouth.net](mailto:odenassoc@bellsouth.net)

P.O. Box 1806  
Shreveport, LA 71166



**Delta-T**  
**Geophysical**  
**Consulting, Inc.**

**Comprehensive Geophysical Services**

- Kingdom Suite 2d/3d pak
- Geographix
- GMA
- Neuralog
- Mesa 3-D Design
- Digirule

**Woodie Huffman, CEO**

401 Edwards Street, Suite 826  
Shreveport, LA 71101-5510

Phone: (318) 221-0414

Fax: (318) 425-0688

Email: [delta@bellsouth.net](mailto:delta@bellsouth.net)

# Williamson

## OIL & GAS, INC.

### Oil & Gas Development



Office: (318) 221-2923

400 Travis Street

Fax: (318) 221-3488

Suite 1410

Email: [bob@williamsonogi.com](mailto:bob@williamsonogi.com) Shreveport, LA 71101



# SGC

## ENERGY

CONSULTING LLC

### Scott G. Comegys, P.G.

LA #812

333 Texas St., Suite 825

Shreveport, LA 71101

(318) 426-3689

[scott@sgcenergy.com](mailto:scott@sgcenergy.com)

## Cowgill & Associates, L.L.C.

Oil & Gas Exploration & Production

### Stephen C. Cowgill

Geologist/Managing Partner

P. O. Box 72180

Bossier City, LA 71172-2180

[cowgill@suddenlink.net](mailto:cowgill@suddenlink.net)

Office: 318.429.2170

Fax: 318.429.1170

Cell: 318.455.9516

SEISMIC INTERPRETATION

HZ DRILLING PROGNOSIS

EXPLORATION | ASSET EVALUATION

WI PARTICIPATION | MARKETING



# 30th ANNUAL ALTAPL-SGS GOLF TOURNAMENT

P.O. Box 1296  
Shreveport, LA 71163

**Friday, October 6, 2023**

Start at 8:00 am and 1:00 P.M.

*East Ridge Country Club*

## 2023 Tournament Committee

Claire Iles  
(text) 318-347-0376  
[iles\\_claire@yahoo.com](mailto:iles_claire@yahoo.com)

Hunter Temple  
318-243-1134

Crystal Dupuy  
318-840-4088

John Barr  
318-588-6570

Preston Smith  
318-537-0706

Email us at  
[golf.altapl@gmail.com](mailto:golf.altapl@gmail.com)

The golf entry fee includes green fees, golf cart, golf apparel, hamburger bar lunch, hors d'oeuvres dinner, beverages, and door prizes. The Social Fee includes dinner, beverages, door prizes and entertainment. ***\*The social fee must be paid ahead of time as no money will be collected at the door.***

The golf tournament will be a flighted four man scramble. Assemble your foursome with all handicaps as well as **contact phone number, email address** and **SHIRT SIZE (or we will give you a smedium).**

**A handicap MUST be listed for each member of your foursome in order to properly flight the teams.** Prizes will be rewarded for flight winners, hole-in-ones, closest to the hole on all par threes and winners of the long drive contests.

Due to the overwhelming popularity of this annual event, the tournament will be held for society members and guests only. **Please make sure your SGS & ALTAPL dues are current and please make sure team payment is made timely!**

The **deadline** for entering will be **Friday, September 29, 2023** and will be limited to a first come first served basis. The field is **LIMITED TO 60 TEAMS. 30 IN THE MORNING WITH A 8:00 AM SHOTGUN AND 30 IN THE AFTERNOON WITH A 1:00 PM SHOTGUN.**

The event will kick off with breakfast at 7:00 followed by a shotgun start at 8:00 a.m. Lunch will be at 11:30 a.m. and proceed with a shotgun start at 1:00 p.m. followed by an evening of food, beverages, awards, and door prizes.

If you have any questions, please call us at the numbers listed or email us at [golf.altapl@gmail.com](mailto:golf.altapl@gmail.com).

Sincerely,

*Your 2023 Tournament Committee*



## **BER-EX-CO., INC.**

**Orville Roger Berg, Ph.D.**

Exploration, Exploitation  
Seismic Evaluation  
Domestic, International

400 Travis St., Suite 1612  
Shreveport, LA 71101-3108  
(318) 220-0300  
orberg@bellsouth.net

9949 Beaver Creek Drive  
Shreveport, LA 71106  
(318) 798-1748

## **Reynolds Drilling Company, Inc.**

7591 Fern Ave., Suite 2001  
Shreveport, Louisiana 71105-5502

Phone: (318) 227-0118

Fax: (318) 227-0171

reydrill@bellsouth.net

**Terry Pat Reynolds**  
*President*

## **GERARD ASSOCIATES, L.C.**

OIL & GAS EXPLORATION  
DEVELOPMENT AND ACQUISITIONS

**J. A. Wojtkiewicz • Charles Gerard**

625 Market St., Suite 250  
Shreveport, LA 71101  
Tel. (318) 221-0761 • FAX (318) 221-8835



## **SPANOIL INCORPORATED**

11050 BELLE ROSE CIRCLE  
SHREVEPORT, LA 71106  
CELL: (318) 218-5711  
anthony@spanoil.com

**ANTHONY J. SPANO**  
PRESIDENT



## **DONNER P R O P E R T I E S**

**ANNA RACHAL**  
Argent Mineral Management, LLC, Manager

**318.251.5830**  
arachal@argentmineral.com

**2023 ALTAPL/SGS**  
**TOURNAMENT ENTRY FORM**

Friday, October 6, 2023  
Start at 8:00 A.M. and 1:00 P.M.  
East Ridge Country Club

**\*\* No funds will be collected the day of the event.**

**MEMBER**

Play Golf & Attend Social                      \$200.00 \_\_\_\_\_/ per golfer  
Attend Social Only                                      \$40.00 \_\_\_\_\_

**GUESTS & NON-MEMBERS**

Play Golf & Attend Social                      \$250.00 \_\_\_\_\_/ per golfer  
Attend Social Only                                      \$50.00 \_\_\_\_\_

LIST FOURSOME:

1. \_\_\_\_\_                      **Shirt Size** \_\_\_\_\_                      **Handicap** \_\_\_\_\_

Phone No. \_\_\_\_\_                      Email: \_\_\_\_\_

2. \_\_\_\_\_                      **Shirt Size** \_\_\_\_\_                      **Handicap** \_\_\_\_\_

Phone No. \_\_\_\_\_                      Email: \_\_\_\_\_

3. \_\_\_\_\_                      **Shirt Size** \_\_\_\_\_                      **Handicap** \_\_\_\_\_

Phone No. \_\_\_\_\_                      Email: \_\_\_\_\_

4. \_\_\_\_\_                      **Shirt Size** \_\_\_\_\_                      **Handicap** \_\_\_\_\_

Phone No. \_\_\_\_\_                      Email: \_\_\_\_\_

Mail all entry forms and entry fees to:  
**ALTAPL/SGS Golf Tournament**  
P.O. Box 1296  
Shreveport, LA 71163

**\*\*\* Make checks payable to the ALTAPL \*\*\***

**RETURN THIS FORM WITH PAYMENT**  
**OR PAY ONLINE**



# RESOURCES

In times of change, some things remain the same.

SEATED AT DESK:

**Denis Poljak, Ph.D., CPM<sup>®</sup>, CIMA<sup>®</sup>, CFP<sup>®</sup>**

*Partner  
Managing Director  
Wealth Manager*

SEATED IN FRONT OF DESK:

**Davor Poljak, MBA, CPM<sup>®</sup>**

*Partner  
Managing Director  
Wealth Manager*

BACK ROW:

**Jason Adams, MBA**

*Partner  
Vice President  
Client Relationship  
Manager*

**Ryan Yarbrough**

*Partner  
Vice President  
Registered Client  
Administrative Manager*

**John Simpson**

*Partner  
Vice President  
Wealth & Portfolio  
Specialist*

**Joseph Fell, MBA**

*Partner  
Vice President  
Wealth & Portfolio  
Specialist*

**Scott Salvail**

*Partner  
Vice President  
Wealth & Portfolio  
Specialist*

**P POLJAK GROUP**  
WEALTH MANAGEMENT  
At Steward Partners

333 TEXAS ST., SUITE 2230, SHREVEPORT, LA 71101  
318-674-4100

Securities and investment advisory services offered through Steward Partners Investment Solutions, LLC, registered broker/dealer, member FINRA/SIPC, and SEC registered investment adviser. Investment Advisory Services may also be offered through Steward Partners Investment Advisory, LLC, a SEC registered investment adviser. Steward Partners Investment Solutions, LLC, Steward Partners Investment Advisory, LLC, and Steward Partners Global Advisory, LLC are affiliates and separately operated. Poljak Group Wealth Management is a team at Steward Partners.

Denis Poljak, Ph.D., CPM<sup>®</sup>, CIMA<sup>®</sup>, CFP<sup>®</sup>, Wealth Manager • Davor Poljak, MBA, CPM<sup>®</sup>, Wealth Manager  
Jason Adams, MBA, Client Relationship Manager • Joseph Fell, MBA, Wealth & Portfolio Specialist • Scott Salvail, Wealth & Portfolio Specialist  
John Simpson, Wealth & Portfolio Specialist • Ryan Yarbrough, Registered Client Administrative Manager

# Meeting Videos Online Now

Visit <https://sgs1.org/continuing-education> to find recordings from this year's meetings available for \$10 each. Contact [ShreveportGeological@gmail.com](mailto:ShreveportGeological@gmail.com) if you have any issues.



[WELCOME](#) / [ABOUT US](#) / [EVENTS](#) / [EDUCATION](#) / [MEMBERSHIP](#)

[SCHOLARSHIPS](#)  
[MAPS IN SCHOOLS](#)  
[THE MOCK DIG](#)  
[LECTURES](#)  
[CONTINUING EDUCATION](#)

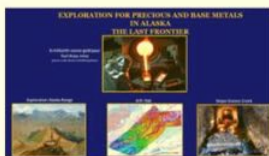
## Continuing Education

Shreveport Geological Society members can earn continuing education credit by participating in short courses offered by the SGS on an annual basis, and by taking advantage of the opportunities for continuing education provided below. Fifteen (15) hours of continuing education are required for the annual renewal of a P.G. license, with one of those hours in the area of Professional Ethics. Visit the Louisiana Board of Professional Geoscientists website for more information. If you have suggestions for continuing education opportunities, please submit them here.

### Upcoming Opportunities

Check back soon for more.

### SGS Meeting Videos



Exploration for Precious and Base Metals in Alaska - The Last Frontier

\$10.00

Presented by George W. Roth on September 21, 2021



Coring and New Technology

\$10.00

Presented by Blake Mock on October 19, 2021



Making the most out of your geochemical data

\$10.00

Presented by Craig D. Barrie on November 16, 2021

# Monthly Permits – August 2023

*Provided by ABCD GIS Mapping*

## Louisiana Permits

Permit Date	County	Well SN	Depth	Permit Date	County	Well SN	Depth
8/1/23	CADDO	254304	24000	8/15/23	BOSSIER	254325	21411
8/1/23	CADDO	254305	24000	8/15/23	CADDO	254322	24500
8/3/23	CADDO	254306	4000	8/15/23	CADDO	254323	24500
8/9/23	DE SOTO	254310	25000	8/15/23	CADDO	254324	19000
8/9/23	DE SOTO	254311	25000	8/15/23	DE SOTO	254326	28200
8/9/23	DE SOTO	254312	24500	8/16/23	DE SOTO	254327	28200
8/10/23	DE SOTO	254313	20500	8/18/23	BOSSIER	254328	17300
8/15/23	BOSSIER	254317	24500	8/22/23	CADDO	254330	1300
8/15/23	BOSSIER	254318	24500	8/29/23	DE SOTO	254334	24000
8/15/23	BOSSIER	254319	24500	8/29/23	DE SOTO	254335	24000
8/15/23	BOSSIER	254320	22031	8/29/23	DE SOTO	254336	24000
8/15/23	BOSSIER	254321	21681	8/29/23	SABINE	254333	8121
				8/30/23	CADDO	990501	0

See Map and Texas Permits on following pages.

## Invest in the Future

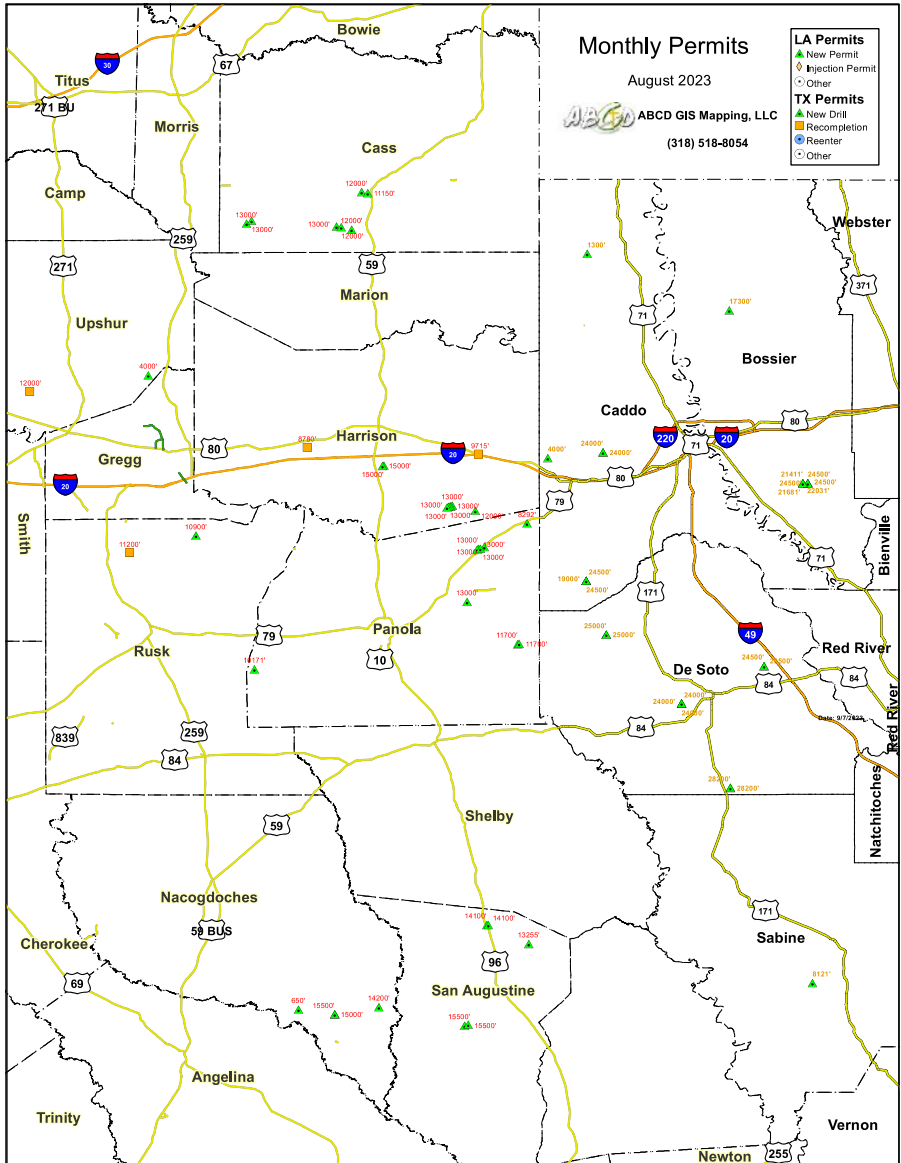
You can **donate** to the **SGS Scholarship Fund** online at [SGS1.org](http://SGS1.org) or by writing a check to the SGS with “Scholarship” in the memo line, and you may include an “**in memory of**” or “**in honor of**” note as well.

Mail to: Shreveport Geological Society,  
P.O. Box 750, Shreveport, LA 71162.

# Monthly Permits – August 2023

Provided by ABCD GIS Mapping

## Map



See Permits listed on previous and following pages.

# Monthly Permits – August 2023

*Provided by ABCD GIS Mapping*

## Texas Permits

AppDate	County	API	TD	AppDate	County	API	TD
8/2/23	PANOLA	36538862	11700	8/15/23	PANOLA	36538840	13000
8/2/23	PANOLA	36538865	11700	8/15/23	UPSHUR	45930771	12000
	SAN			8/17/23	RUSK	40135477	10900
8/2/23	AUGUSTINE	40530820	14100	8/18/23	UPSHUR	45931499	4000
	SAN			8/23/23	PANOLA	36538873	13000
8/2/23	AUGUSTINE	40530822	14100	8/23/23	PANOLA	36538696	8292
8/3/23	CASS	06730900	12000	8/24/23	CASS	06730902	13000
	SAN			8/24/23	HARRISON	20333176	8780
8/3/23	AUGUSTINE	40530817	15500		SAN		
	SAN			8/25/23	AUGUSTINE	40530809	13255
8/3/23	AUGUSTINE	40530818	15500	8/25/23	CASS	06730903	13000
8/7/23	PANOLA	36538874	13000	8/25/23	NACOGDOCHES	34733495	650
8/7/23	PANOLA	36538875	13000	8/28/23	CASS	06730899	11150
8/7/23	CASS	06730879	12000	8/28/23	HARRISON	20335610	12000
8/10/23	RUSK	40131877	11200	8/28/23	HARRISON	20335612	15000
8/11/23	HARRISON	20335603	13000	8/28/23	HARRISON	20335613	15000
8/11/23	HARRISON	20335604	13000	8/28/23	CASS	06730892	13000
8/11/23	HARRISON	20335605	13000	8/29/23	PANOLA	36538872	10171
8/11/23	HARRISON	20335606	13000	8/30/23	PANOLA	36538869	13000
8/11/23	HARRISON	20335607	13000	8/30/23	NACOGDOCHES	34733472	14200
8/11/23	HARRISON	20331814	9715	8/30/23	NACOGDOCHES	34733489	15500
				8/30/23	NACOGDOCHES	34733490	15000
				8/31/23	CASS	06730904	12000

See Map and Louisiana Permits on previous pages.

Join our group on

**LinkedIn**

Keep in Touch  
through the  
Shreveport  
Geological Society  
LinkedIn Group.

# In Memoriam: Arthur Trowbridge

Arthur Henry Trowbridge, born October 1, 1921, passed away peacefully at home on August 15, 2023, just six weeks shy of his 102nd birthday.



Arthur was born in Shreveport to Annie Henry May Trowbridge and William L. Trowbridge. He attended St. Mary's Grade School and St. John's High School, graduating from Byrd High School after during his Senior year at St. John's the Jesuit priests instructed him to no longer come to class late still in his house slippers. Apparently, he failed to comply. While attending Centenary College he worked in the mail room at Gulf Oil Corporation. It was during that time that he became interested in Petroleum Geology having been encouraged to pursue that field of study by those with whom he worked at Gulf. That decision began a lifelong career in the oil and gas business.

Arthur was a loving and kind husband, surrogate father, brother and uncle. He and his late wife Joyce were married for 75 years until Joyce's death in March 2021. Although they had no children, Joyce and Arthur raised Joyce's sister, Donna, as their own after her mother died in an automobile accident in 1953. Arthur's career took them from Shreveport to Jackson, Mississippi, and then to New Orleans. Ultimately Joyce and Arthur returned to Shreveport where he continued work as a geological consultant for several years before retiring.

After retirement, Joyce and Arthur lived in Cheboygan, Michigan, Orange Beach and Foley Alabama. They eventually returned to Shreveport in 2013, living for a while in the house they built in the 1960s on Audubon Place.

Arthur was a devout Catholic serving the Church parishes in which he and Joyce lived in various capacities. He and Joyce were early members of St. Joseph Catholic Church in Shreveport, and both were



devoted, longtime members of the Equestrian Order of the Holy Sepulchre of Jerusalem.

Arthur was preceded in death by his parents, his brother, William L. Trowbridge, Jr., his sisters, Addie Trowbridge Pixler and Martha Trowbridge Fleming, and his niece, Louann Fleming Young. He is survived by Joyce's sister, Donna Watson Nowak (Fred) of East Hartford, CT, nieces Susan Trowbridge Ferrell (Frank) and Nancy Trowbridge Emery (Bill), and his nephew Bill Fleming (Carolyn) all of Shreveport.

A funeral service will be held at Osborn Funeral Home Chapel on Friday, August 25, 2023, at 10:00 a.m., with entombment to follow in the Mausoleum at Forest Park on the west side of St. Vincent Avenue. The funeral service will be presided over by Rev. Duane C. Trombetta, Pastor of Holy Trinity Catholic Church. A Memorial Mass and Celebration of both Arthur's and Joyce's lives will be held at a later date.

The family would like to express their sincere appreciation to Arthur's devoted caregivers, Jonathan Johnson, Antonio Tillman and John Tillman and to all to the health care providers who have assisted in this journey. With their help, Arthur was able to live out his life at home, on his terms, watching The Lawrence Welch Show and Fox News any time he wished.

In lieu of flowers, please consider a memorial donation to the Holy Trinity Catholic Church, 315 Marshall Street, Shreveport, LA 71101, Catholic Charities of North Louisiana, 902 Olive Street, Shreveport, LA 71104, or to the charity of your choice.

"Indeed for your faithful, Lord, life is changed not ended, and, when this earthly dwelling turns to dust, an eternal dwelling is made ready for them in heaven".



# LOUISIANA BOARD OF PROFESSIONAL GEOSCIENTISTS

## Geoscientist Licensing in Louisiana

### Did you know?

When you attend a monthly Shreveport Geological Society meeting, you earn one hour of continuing education credit for your LBOPG license. This is a simple and enjoyable way to get your hours! You can also find links to continuing education ethics credit courses at <https://sgs1.org/continuing-education/>.

### Ready to track your CE hours?

Visit the LBOPG website today to download your continuing education log template

[lbopg.org/resources/continuing-education](http://lbopg.org/resources/continuing-education)

1	A	B	C	D	E	F	G	H	I	J	K	L
2	Name:				PG License #:			Renewal Date:				
3	Date	Code*	Activity Title			Instructor	Sponsor Organization Name		Location		Credits	
4										Time	CEU	PDH
5												
6												
7												
8												
9												
10												
11												
12												
13												
14												
15												
16												
17												
18												
19												
20												
21	Total PDH claimed this renewal period:											0
22	PDH carry over from previous year claimed for this report:											
23	Total PDH claimed to meet minimum requirements:											0
24	PDH to be carried over to next year's report:											
25	Audits will be conducted randomly and/or as needed to confirm CE activities each year.											
26	It is your responsibility to collect and maintain proof of attendance and completion of CE activities in case an audit is called.											
27	*Code		Conversion of =	PDH		Minimum hrs. to renew	Maximum hrs. Allowed/Period					
28	Participant Credit	P	Each Direct Hour =	1		14	Geoscience Credits	Society Meetings				12
29	Instructor Credit	I	CEU, Papers, etc.=	10		1	Ethics Credits	Self directed Coursework				5
30	Authorship Credit	A	College Qtr. Hr.=	10		15	Total	Authorship - Paper				10
31	Meeting Credit	M	Semester Hour =	15				Authorship - Book				45
32	Ethics Credit	E	Instructor =	3XPDH								
33												
34												
35	This form was intended to be a one (1) letter size page, i.e. one (1) years record of CE activity or 15 PDH.											
36	It is recommended that additional data be entered into a second (or third, etc.) worksheet in this spread sheet workbook.											
37	An entire (blank) form can then be copied into the new worksheet and the sheet tab named as the report year.											
38	This workbook has two (2) new sheets included as examples so you can start the process of recording your CE activity.											
39												

# In Memoriam: Cory Ezelle

Mr. Cory Jackson Ezelle, age 65, passed away on Tuesday, September 26, 2023 at his home after a lengthy battle with his health.



Cory was born in Jackson, MS on December 30th, 1957 to Fred Jackson Ezelle and Katherine Ann Grimes Ezelle. He grew up in a lively household with 3 older siblings and spent his early days like most southern boys did, playing front yard baseball with the neighborhood kids, fighting GI Joe's, and so much more. He graduated high school from Jackson Preparatory School and then went on to receive a Bachelor of Science in Geology from Millsaps College, only a block down from where he grew up. This launched him into a lifelong career as an exploration geologist, spending over 40 years in the industry. During that time, he worked at several different oil and gas companies but spent most of his career as the lead Exploration Geologist and eventual Vice President of Exploration at Sklar Exploration. Although his successes and discoveries in the field were plentiful, his ability to explore and find new sources of fuel were driven by his ever-growing curiosity and inquisitive nature. He loved what he did.

By far the most important part of Cory's life was his deep and uninhibited love for his family and his Savior. Cory crossed paths with the love of his life, Bebe Ogletree, when he was working in Jackson at the start of his career. They were married on December 29, 1984, and ever since have had an unwavering commitment to one another. This led to the growth of their family with two children, Karen Evelyn Ezelle and Christopher Joseph Ezelle. He and Bebe raised the family in Shreveport, LA after moving there in 1991. This small but tightly woven family was Cory's greatest treasure. His steadfast faith in Christ and strong scriptural knowledge made him a leader to his family, a lighthouse in dark waters. Cory was a voracious reader and enjoyed being a student of the Bible, teaching in his Sunday school classes, and participating in church leadership.

A few of Cory's favorite hobbies included reading science fiction novels, watching LSU sports and the New Orleans Saints, walking and training his dogs, and listening to his favorite music. He loved so many genres, spanning from Romantic Classical Brahms to Progressive Rock Genesis and passed on this deep love of music to his children. He was fortunate enough to travel to many different countries and see all corners of the world during his life. He especially loved Great Britain, where he felt a strong connection to his ancestral roots.

Anyone who met Cory knows how truly kind, thoughtful, generous, and intelligent he was. His detail-oriented mind made him a great teacher and conversationalist, while at the same time making one feel heard and appreciated. Cory left his mark through his sense of humor, his quips, jokes, and completely original sayings. His silly but charming lines live on with his family. Cory was incredibly strong and courageous throughout his entire life, dealing with medical issues ranging from cancer to heart failure and miraculously overcoming them time and time again. His perseverance and ability to overcome and provide is inspirational. Perhaps his greatest attribute was his character; Cory always stood for what was right in the eyes of God and through that led others towards a more Christ-centered life. He selflessly gave his love, time, and resources to provide for those he loved and was incredibly generous to those in need in his community. As a husband, father, grandfather, and friend, he remained loyal to every single person lucky enough to be a part of his beautiful life.

Cory was preceded in death by his parents and mother-in-law, Rose Evelyn Ogletree. He is survived by his wife Bebe; his daughter Karen, her husband Dane Dumesnil, and their yet to be born son Caleb Joseph Dumesnil; his son Christopher Joseph, Christopher's wife Ashlon Kay Eubank Ezelle, and their daughter Rose Evelyn Ezelle. He is also survived by his siblings, Ken (and Irene) Ezelle, Charles "Kip" (and Janice) Ezelle, and Karen Redhead; his father in-law Thomas Joseph Ogletree; and his siblings in-law Jody (and Dody) Ogletree, Elizabeth Cosby, Jennifer (and Kevin) Collins, and numerous nieces and nephews.

The family suggests that memorials may be made to First Methodist Church of Shreveport, Louisiana.

# Like what you see?

Fill out and mail in this form or find it online at [SGS1.org](http://SGS1.org).

You can renew online instead of filling out this card!  
 ★ [www.sgs1.org](http://www.sgs1.org) ★

Active \$25 / yr	
Associate \$25 / yr	
Honorary \$0 / yr	
Student \$5 / yr	
Optional Donation SGS Scholarship Fund	
Optional Donation Faithful Friends	
<b>Total Payment</b>	

NAME (Please Print) \_\_\_\_\_

Check if new applicant or change of address.

DATE \_\_\_\_\_

APPLICANT OR MEMBER PLEASE TYPE OR PRINT

LAST NAME	FIRST	INITIAL	NICKNAME		
COMPANY			POSITION OR TITLE		
COMPANY MAILING ADDRESS		CITY	STATE	ZIP	COMPANY PHONE
HOME ADDRESS		CITY	STATE	ZIP	HOME PHONE
FAX NUMBER		E-MAIL ADDRESS		CELL PHONE	
SCHOOL	DEGREE	MAJOR	YEAR		

PROFESSIONAL AFFILIATIONS	AAPG <input type="checkbox"/>	GSA <input type="checkbox"/>	SEG <input type="checkbox"/>	SEPM <input type="checkbox"/>	AIME <input type="checkbox"/>	SPWLA <input type="checkbox"/>
	APGS <input type="checkbox"/>	PS <input type="checkbox"/>	AGI <input type="checkbox"/>	SIPES <input type="checkbox"/>	SPE <input type="checkbox"/>	OTHER _____

OUTLINE OF EXPERIENCE \_\_\_\_\_  
 \_\_\_\_\_  
 SPOUSE'S NAME \_\_\_\_\_

PREFERRED MAILING ADDRESS  
 HOME  BUSINESS  
 EMAIL ME THE NEWSLETTER  
 (no printed copy will be mailed)

## QUALIFICATIONS FROM BY-LAWS

In order to be eligible for active membership, an applicant shall be engaged in the practice or teaching of geology or related sciences.

In order to be an associate member, an applicant shall be interested in geological science but not actively engaged in the practice or teaching of geology or related sciences.

### To The EXECUTIVE BOARD:

I hereby apply for  ACTIVE  ASSOCIATE membership in SHREVEPORT GEOLOGICAL SOCIETY and pledge myself to abide by its Constitution and By-laws.

Date: \_\_\_\_\_ Signature: \_\_\_\_\_

SPACE BELOW TO BE USED FOR PROCESSING ONLY

#### Membership Committee

Received: \_\_\_\_\_

Approved for:  Active  
 Associate  
 Student

#### Executive Board

Approved: \_\_\_\_\_

SECRETARY

Date: \_\_\_\_\_









# SGS HONORARY MEMBERS

James D. Aimer\*  
William E. Bancroft\*  
Michael W. Beckman\*  
Orville Roger Berg  
David L. Billingsley, Jr.  
B. W. Blanpied\*  
Prentis L. Boatner, Jr.\*  
Alan L. Brittain  
John Franks\*  
Victor P. Grage\*  
John C. Grunau\*  
J. Frank Harrell\*  
James B. Harris\*  
William E. Hayes\*  
Roy T. Hazzard\*  
Dr. Leo Hermann\*  
Kevin B. Hill  
Charles J. Hoke\*  
Perry G. Holloway\*  
Walter E. Hopper\*  
E. B. Hutson\*  
L. Lee Kincade\*  
Joseph O. Laird\*  
Paul Todd Landes, Jr.\*  
W. W. Lincoln\*  
William R. Meaney  
Clarence L. Moody\*  
John T. Palmer\*  
Thomas H. Philpott\*  
William M. Plaster\*  
Gene R. Robinson\*  
C. Lane Sartor\*  
Erwin W. Saye\*  
Fred R. Schroeder\*  
C. Ray Scurlock\*  
Walter H. Spears\*  
William C. Spooner\*  
George D. Thomas\*  
Arthur H. Trowbridge\*  
Henry J. Tyler\*  
Claude N. Valerius\*  
Warren B. Weeks\*  
Percy J. Wheeler, Jr.  
B. Ross White\*  
R. M. Wilson\*

(\* Deceased)