

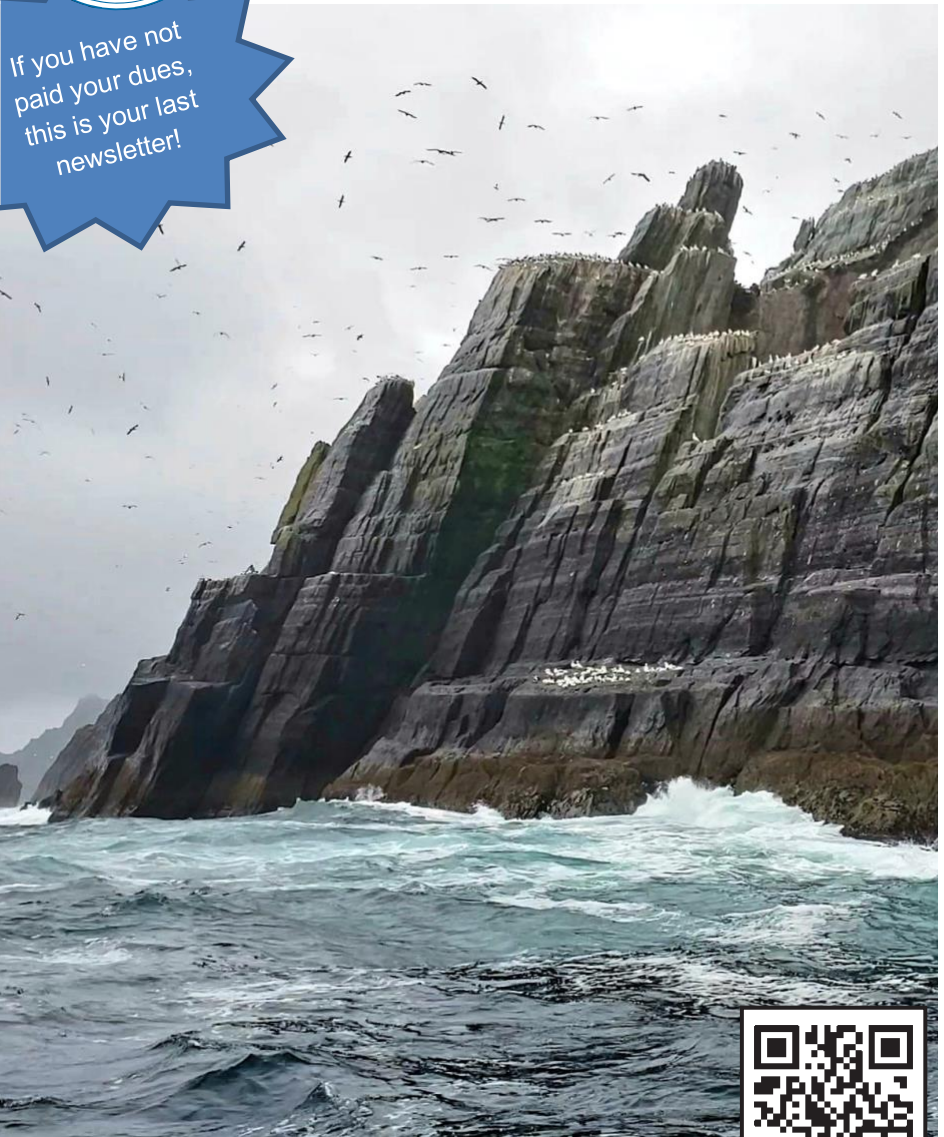


# Shreveport Geological Society **NEWSLETTER**

Volume 64, No. 2

October 2019

If you have not  
paid your dues,  
this is your last  
newsletter!



SGS1.ORG

**Oil Humor p. 11**  
**GEOGULF p. 29**

*Message  
from*



*the  
President*

*H*ello All. I have been constantly looking at the 14 day weather outlook recently in hopes of seeing a cool down coming and some rain. The tropics have been active with Hurricane Dorian devastating the Bahamas and multiple tropical storms popping up near the Gulf of Mexico.

The current price of oil has jumped 12% and gas almost 3% due to the Yemen's Houthi rebels recent drone attacks on the world's largest oil processing center and a major oil field in Saudi Arabia. It knocked half of its oil supply offline, and President Trump authorized releasing oil from the national reserve. I guess we will see, in time, if this rise in price is short or long term.

I would like to remind all of you about 2 upcoming events that you have the opportunity to attend and volunteer your time. The first is the Red River Revel coming up September 28 – October 6. The Mock Dig is always a favorite for the kids and maybe the start to a career in geology, so please take time to encourage them. The other event is the 69th GCAGS Annual Convention or GEOGULF 2019 being hosted in Houston October 23-25. I hope to see you there.

Lastly, I would like to thank all the sponsors, course cooks, players, and committee members for helping put on the 26th ALTAPL/SGS Golf tournament in September. We had a morning flight with 9 teams and an afternoon flight with 29 teams. We finished the evening off with food, drinks, and prizes.

*Cody Lenert*

# Faithful Friends 2019 - 2020

Ralph Richardson

Gerard Associates

Matthew Chumley

David Billingsley

Alan Schlichtemier

Maurice Birdwell

John E. Atkins

Louise Pearce

Sugar Creek Producing Company

Milestone Energy, LLC

Grigsby Petroleum, Inc.

Windell Phillips

Marlin Exploration, LLC

ALTECT Environmental  
Consulting, LLC

William Downs

Zach Gray

Mark Schroeder

Stratagraph, Inc.

Bill Meaney

Mike Rogers Drilling Company, Inc.

T.W. McGuire & Associates, Inc.

Geological Drafting Consultants, Inc.

Bivins Energy Corporation

Craig C. Barclay

Earl Raborn

Palmer Petroleum, Inc.

Ber-Ex-Co

JM Exploration Co., LLC

Oden & Associates, LLC

Steve White

Joe White, Jr.

Arthur H. Trowbridge

Donner Properties, LLC

David Williamson

John Watkins

Hill Geophysical Consulting

Cypress Operating

Scott D. Stroud

Johnnie P. Wanger

To be a Faithful Friend for 2019-2020, please contact Zach Gray.

## Invest in the Future

You can **donate** to the SGS Scholarship Fund online at [SGS1.org](http://SGS1.org) or by writing a check to the SGS with "Scholarship" in the memo line, and you may include an "in memory of" or "in honor of" note as well.

Mail to: Shreveport Geological Society,  
P.O Box 750, Shreveport, LA 71162.

# Calendar of Events



View this interactive calendar at [SGS1.org](http://SGS1.org)

September 28 – October 6

Mock Dig at the Red River Revel. Volunteers needed.

October 11

RSVP for the Monthly Meeting

October 15

Monthly Meeting: Jacob Jin presents

"Mature Field Revitalization and Unconventional EOR -  
Unlock Reservoir Value with Advanced Bio-Chemical Technology"

11:30 a.m. - 1 p.m.; Petroleum Club 15th Floor

October 23 - 25

GEOGULF19 (formerly known as GCAGS Convention)

April 17, 2020

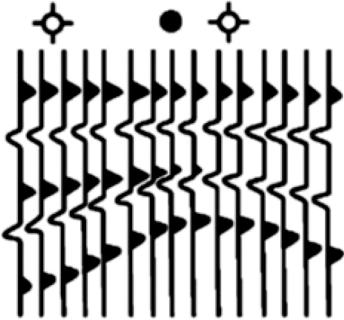
Annual Geology and Wine Dinner Meeting

**On the Cover:** Little Skellig Island, Ireland, photographed by Matthew Williamson. More info on page 13. Got a picture you want to see on the cover? Email it to the editor today!

**Interior Art:** Page 1 "Transparent Primaries" (*detail*) by Gwen Norsworthy. Courtesy of the Norsworthy Gallery, 214 Texas St., Shreveport, LA 71101, online at [TheNorsworthy.com](http://TheNorsworthy.com).  
Page 5 "The Boating Party" (*detail*) by Mary Cassatt.

**Contact the Newsletter Editor:** [1RachelMcNerney@gmail.com](mailto:1RachelMcNerney@gmail.com)

# Hill Geophysical Consulting



**Kevin B. Hill**

*Integrating Geophysical Technology  
with Geology*

**What's Under Your  
Feet? Find out:  
HILLGEO.COM**



415 TEXAS ST., SUITE 200  
SHREVEPORT, LA 71101

**318.221.3329**  
**kevin@hillgeo.com**



## Camterra Resources

**Main Office**

2615 East End Blvd South  
Marshall, TX, 75672  
Telephone: (903) 938-9949  
Fax: (903) 935-0521

**Dallas Office**

100 Crescent Court  
Suite 1800  
Dallas, TX, 75201  
Telephone: (214) 310-0514

[www.camterra.com](http://www.camterra.com)

Chief Executive Officer:	Zach Carlile
President:	Paul Marchand
Exploration Manager:	Daniel Sevier
Director of Operations and Engineering:	Jim Larkin
Lan Manager/ General Counsel:	Allen C. Staggers, Jr.
Asst. General Counsel:	Pam Johnson
Sr. Landman:	Jason Derebery

---

*Seeking Opportunities in Texas, Louisiana, Arkansas, Mississippi, and New Mexico*

---

# The October Meeting

*Make your*  
**RESERVATION**

**Jacob Jin**

presents

“Mature Field Revitalization and Unconventional  
EOR - Unlock Reservoir Value with Advanced  
Bio-Chemical Technology”

**11:30 a.m. Tuesday, October 15**

The Petroleum Club of Shreveport, 15<sup>th</sup> floor

Cost: \$20, Children 10 and under \$8

We encourage members to invite guests, spouses, and  
friends to any of our meetings.

If you'd like a seat, kindly **RSVP**  
by **Friday, October 11** at [SGS1.org](http://SGS1.org),  
or email or call in your reservation to

Matthew Chumley

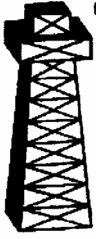
[mchumley@naguss.com](mailto:mchumley@naguss.com) • 318-222-0908

Name: \_\_\_\_\_

I will bring \_\_\_ guest(s): \_\_\_\_\_

WHEN IT HAS  
TO BE DONE  
FAST!

400 TRAVIS ST.  
SUITE 1606  
S'PORT, LA  
71101



COMPUTER  
MAPPING FOR  
THE OIL & GAS  
INDUSTRY.  
COLOR PLOTTING  
AND DIGITIZING.

JOHN  
HARRELL,  
OWNER  
ANDY  
CARDIN,  
DRAFTSMAN

PHONE

**221-7780**



**skrivanos**  
**engineering, inc.**

# Jacob Jin

*Dr.* Jin has integrated industry, academic, management, and investment experience across Asia, America, and the Middle East. He has been dedicated to commercializing clean technology in the fossil industry, and industrializing clean energy. His investment portfolio includes biotechnology, geothermal energy, smart microgrid, hydrocarbon exploration & production, etc. He worked at BP America, Weatherford, and Blade Energy Partners, Energy & Geoscience Institute at the University of Utah. He has published 20+ papers in peer-reviewed journals and SPE conferences. Dr. Jin holds a Ph.D. degree in Petroleum Engineering from the University of Oklahoma.



## Abstract

### **“Mature Field Revitalization and Unconventional EOR - Unlock Reservoir Value with Advanced Bio-Chemical Technology”**

*The* latest advances of bio-chemical technology in petroleum industry will be shared by introducing field cases of production enhancement in Wyoming, Kansas, California, Texas, and Canada. As for the challenges of water breakthrough and paraffin deposition in mature fields, we will share some insights on the field development plan of improving waterflooding conformance and preventing the deposition of paraffin with advanced bio-chemical technology. The unconventional shale EOR pilots in the Permian Basin sponsored by the US Department of Energy will be discussed as well, and we are actively seeking for the leverage of Permian experience to Louisiana.





# PALMER PETROLEUM, INC.

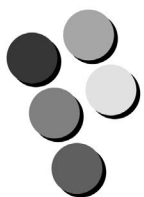
Exploration and Development • Operations • Oil and Gas Investments

330 Marshall Street, Suite 1200  
Shreveport, Louisiana 71101

Phone: (318) 222-0517

[www.palmerpetro.com](http://www.palmerpetro.com)

Fax: (318) 424-3256



# Paragon P R E S S

**DESIGN PRINT MAIL**

**318-868-3351**

**[www.ParagonPress.net](http://www.ParagonPress.net)**



# Photos from the September Meeting

by Brenda Pender

Gustavo Carpio presented “Ingrain Services: Optimized Rotary Sidewall Core Selection and Analysis.”





# MILESTONE ENERGY, LLC

Oil & Gas Exploration and Development

**Joseph A. Lott**

Geologist / Managing Partner

**Zach Kelly**  
Geologist

**Zach McDonald**  
Geologist

**Thomas A. Giles**  
Land Manager

333 Texas Street, Suite 516  
Shreveport, Louisiana 71101  
jlott100@bellsouth.net

Office: 318.212.0470  
Fax: 318.212.0469

- Looking for Prospects
- Geophysical Consultant
- Landmark Graphics Corp. Software
- Synthetic Seismograms, modeling and cross sections



- Digitizing capability
- 2-D & 3-D Seismic Acquisition, Processing & Interpretation
- SeisVision 2-D & 3-D interpretation and mapping software

**Bobbie Ben Taylor - President**

O: 120 S Broadway, Suite 102  
Tyler, Texas 75702  
Mobile: (903) 521-3182

H: 7130 Holly Square Court  
Tyler, Texas 75703  
Email: taylor@webfoxmail.com

## LOOKING FOR PROSPECTS

*Let me tailor your geophysical needs.*

# HALLIBURTON

Do you require an integrated approach to total well construction, formation evaluation, and optimized production? Make the jump to our team. We have the best local people for designing your well, performing state of the art formation evaluation, and planning and executing your completion.

**Logging & Perforating**  
**Production Enhancement (Stimulation)**

**Cementing**  
**Security Bits**  
**Tools, Packers, & TCP**  
**Coli Tubing Services**

**Shreveport Sales 318-673-4400**  
**Tyler sales 903-581-5263**  
**Kilgore Operations 1-800-654-6926**



[www.lmkr.com](http://www.lmkr.com)



**Jeremy Stuhr**

Account Executive

jsuhr@lmkr.com  
P : +1 281 848 3319  
C : +1 346 313 5377  
F : +1 281 879 0135



LMK Resources Inc.  
6051 North Course Drive Suite 300  
Houston, TX. 77072 USA

# From the Archives

*By Annie Green*

*As printed in the March 1970 SGS Newsletter*

## Children's View Gives Oil Humor

Children the world over have tremendous imaginations. In discussing petroleum, for example, a teacher is liable to get humorous and fanciful answers.

Here are some that were penned by U.S. nine-year-olds in a school examination. Some display keen insight, others include little known "facts".

"The United States uses over 11 million barrels of petroleum a day, 11 million is bigger than the largest known whale."

"Until it is decided whether petroleum is gasoline or oil, we must continue to call it petroleum."

"Petroleum was formed millions of years ago. I believe that unlike what most people think, there were people around then. Or nobody could have named it petroleum."

"To lessen the chances of drilling tools getting caught in the hole, rotary drilling is carried on around the clock, twelve days a week."

"Before they actually start drilling, the land is cleared and graded. It is graded A-plus if it has oil in it."

"When we take the oil from the ground and squeeze it up through the pipe, we call it liberating the oil. What the oil calls it is unbeknownst."

"Attached to the lower end of the pipe is a bit. A bit of what is gone of the secrets of finding oil."



# Jerry W. Taylor

Consulting Geologist, LLC

17377 LAUREN DRIVE  
PRAIRIEVILLE, LA 70769

1-(225)-287-8342

JWTGEOLOGY@GMAIL.COM

WWW.JWTGEOLOGY.COM

# R. LACY / CRAIN ENERGY

*Oil and Gas Investments  
Exploration and Development*

222 EAST TYLER STREET  
LONGVIEW, TX 75601  
903-758-8276 (O)

**Chris Bresch**  
*V.P. Exploration*  
cbresch@rlacy.com

**Hunter Brumble**  
*Staff Geoscientist*  
hbrumble@rlacy.com

**Scott Caswell**  
*Sr. Geophysicist/Geoscientist*  
scaswell@rlacy.com



Address: 5395 Pearl Prkwy, Ste. 200  
Boulder, CO 80301  
Telephone: (303) 541-1559  
Fax: (303) 443-1551

&

Address: 401 Edwards St., Ste. 1601  
Shreveport, LA 71101  
Telephone: (318) 227-8668  
Fax: (318) 227-9012

Operating in the MAFla, ArkLaTex,  
and WY

# MUSLOW OIL & GAS, INC.

330 Marshall Street  
Suite 628  
Shreveport, LA 71101

**Eric Weiss**  
*President*

(318) 221-8694  
Fax: (318) 227-2106

# From the Archives

(continued)

“I have found flame-jet drilling to be easier to say than to tell what it means.”

“The teeniest part oil can be divided into is the drop.”

“We say the cause of kerosene disappearing is evaporation. Evaporation gets blamed for many things people forget to put the top on.”

“Have you ever wondered how a wildcat could have anything to do with discovering oil? Well, I will explain to you that so have I.”

\*\*\*\*\*

Lots of people who aren't being paid what they're worth should be thankful about it.

\*\*\*\*\*

Hydrology – It takes 3 gallons of water to flush a toilet.

*Got a question or idea for “From the Archives”?  
Email Annie Green at [agreen@naguss.com](mailto:agreen@naguss.com).*

**On the Cover:** Little Skellig Island, Ireland, photographed by Matthew Williamson. The photo is of Little Skellig Island in Ireland. The Skellig Islands (Irish: Na Scealaga) are two small, steep, and rocky islands lying about 13 km (8 mi) west of Bolus Head on the Iveragh Peninsula in County Kerry, Ireland. The islands are composed of Old Red Sandstone and compressed slate, formed during the rising of the MacGillycuddy's Reeks and Caha Mountains ranges, between 360 and 374 million years ago, during the Devonian period, when Ireland was part of a larger continental land mass and located south of the equator. Little Skellig (Irish: Sceilig Bheag) Island is closed to the public and is Ireland's largest northern gannet (*Morus bassanus*) colony with almost 30,000 pairs. It is also one of the world's largest colonies, and is of international importance.

**Kingwood Exploration, LLC**  
**Oil & Gas Exploration**  
**and Production**



**Kurt M. Ley**

Exploration Manager & Partner

**Robert E. Braswell**

Engineering/Operations Manager & Partner

416 Travis St., Suite 1100  
Shreveport, LA 71101

Phone: 318-946-8585

Fax: 318-946-8287

kurt.ley@kingwoodexploration.com  
robert.braswell@kingwoodexploration.com



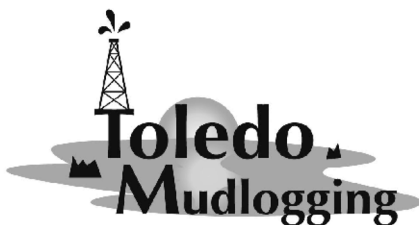
*Established by G.M. Anderson*

**333 TEXAS ST., SUITE 2020**

**SHREVEPORT, LA 71101-5357**

**Phone: (318) 227-2000**

**Fax: (318) 425-5935**



★ Milam, TX

★ Many, LA

**The Horizontal Specialists!!**

We work with the greatest companies  
in the world, please give us a call  
to see what we can do for you!!

**Joe Eidson 318-623-5077**

**Michael Danos 318-332-7673**

P. O. Box 1209, Many, LA 71449

**Security Exploration, Inc.**

8509 Line Avenue  
Shreveport, LA 71106



J. Stafford Comegys  
President

Donna Walker  
Geologist

Barbara Lyles  
Office Manager

**OIL & GAS EXPLORATION**

**Tel: (318) 222-1066**

**Fax: (318) 222-4932**

# Mock Dig

September 28 – October 6

Sign up now to **play** in the dirt  
and *inspire* future geologists  
at this year's Red River Revel!



**Co-chair and other volunteers are needed.**

**Please contact Carrie Salinas:**  
[csalinas@virtusenvironmental.com](mailto:csalinas@virtusenvironmental.com)

Join our group on

**LinkedIn**

Keep in Touch  
through the Shreveport Geological  
Society LinkedIn Group.



The rock kit is ready  
(*pictured left*).  
E-mail Maps in Schools Chairman  
Matthew Chumley at  
[mchumley@naguss.com](mailto:mchumley@naguss.com)  
to give a talk with the kit and  
present a geologic map to a class  
of future geoscientists.



# THE PETROLEUM CLUB OF SHREVEPORT

Serving delectable cuisine to the  
Shreveport Geological Society  
regular luncheon meetings.

**318-425-4251**



**David Meadows  
Manager**

Mid South Tower Bldg.  
416 Travis Street, Suite 1414  
Shreveport, LA 71101

Phone: 318-425-7617  
Fax: 318-425-1385  
Email: [jmexploration@comcast.net](mailto:jmexploration@comcast.net)

## **BRAMMER** ENGINEERING, INC.

### Services:

- Drilling
- Completion
- Construction
- Production
- HSE
- Regulatory
- Land
- Accounting
- Risk Management
- Information Systems



[www.brammer.com](http://www.brammer.com)  
318.429.2345 o • 318.429.2340 f  
400 Texas Street • Suite 600 • Shreveport, LA 71101

## **WLS CORPORATION**

**OIL & GAS  
EXPLORATION & PRODUCTION**

**Wayne L. Simpson  
President**

**Philip Davis  
Geologist**

416 Travis Street, Suite 1006  
Shreveport, Louisiana 71101

Office: (318) 425-2978  
Fax: (318) 425-3166



# LOUISIANA BOARD OF PROFESSIONAL GEOSCIENTISTS

## Geoscientist Licensing in Louisiana

### Did you know?

When you attend a monthly Shreveport Geological Society meeting, you earn one hour of continuing education credit for your LBOPG license. This is a simple and enjoyable way to get your hours! You can also find links to continuing education ethics credit courses at <https://sgs1.org/continuing-education/>.

### Ready to track your CE hours?

Visit the LBOPG website today to download your continuing education log template  
[lbopg.org/resources/continuing-education](http://lbopg.org/resources/continuing-education)

	A	B	C	D	E	F	G	H	I	J	K	L
1	<b>Name:</b>					<b>PG License #:</b>		<b>Renewal Date:</b>				
3	<b>Date</b>	<b>Activity</b>				<b>Sponsor Organization</b>				<b>Credits</b>		
4		<b>Code*</b>	<b>Title</b>	<b>Instructor</b>	<b>Name</b>	<b>Location</b>	<b>Time</b>	<b>CEU</b>	<b>PDH</b>			
5												
6												
7												
8												
9												
10												
11												
12												
13												
14												
15												
16												
17												
18												
19												
20												
21									<b>Total PDH claimed this renewal period:</b>		0	
22									<b>PDH carry over from previous year claimed for this report:</b>			
23									<b>Total PDH claimed to meet minimum requirements:</b>		0	
24									<b>PDH to be carried over to next year's report:</b>			
26	<b>Audits will be conducted randomly and/or as needed to confirm CE activities each year.</b>											
27	<b>It is your responsibility to collect and maintain proof of attendance and completion of CE activities in case an audit is called.</b>											
28	<b>*Code</b>		<b>Conversion of =</b>		<b>PDH</b>		<b>Minimum hrs. to renew</b>		<b>Maximum hrs. Allowed/Period</b>			
29	Participant Credit	P	Each Direct Hour =	1		14	Geoscience Credits	Society Meetings		12		
30	Instructor Credit	I	CEU, Papers, etc.=	10		1	Ethics Credits	Self directed Coursework		5		
31	Authorship Credit	A	College Qtr. Hr. =	10		15	Total	Authorship - Paper		10		
32	Meeting Credit	M	Semester Hour =	15				Authorship - Book		45		
33	Ethics Credit	E	Instructor =	3XPDH								
35	This form was intended to be a one (1) letter size page, i.e. one (1) years record of CE activity or 15 PDH.											
36	It is recommended that additional data be entered into a second (or third, etc.) worksheet in this spread sheet workbook.											
37	An entire (blank) form can then be copied into the new worksheet and the sheet tab named as the report year.											
38	This workbook has two (2) new sheets included as examples so you can start the process of recording your CE activity.											
39												

# **Baldwin Madden Energy, LLC**

*Oil and Gas Property  
Acquisitions and Development*

**George A. Baldwin, Jr.**

**Gregory K. Madden**

**Christopher D. Franks**  
Senior Geologist

**Lonnie J. Shaw**  
Director of Accounting & Finance

**(318) 429-2220**

**(318) 429-2229 Fax**

333 Texas Street, Suite 1919  
Shreveport, LA 71101-3676

# **Reynolds Drilling Company, Inc.**

7591 Fern Ave., Suite 2001  
Shreveport, Louisiana 71105-5502

Phone: (318) 227-0118

Fax: (318) 227-0171

reydrill@bellsouth.net

**Terry Pat Reynolds**  
*President*

# **STROUD PRODUCTION, LLC**

333 Texas Street, Suite 860

Shreveport, Louisiana 71101-5302

Voice: (318) 429-2260

Fax: (318) 429 2255

Email: ras@spllc.com



# **SPANOIL INCORPORATED**

416 TRAVIS ST., SUITE 806  
SHREVEPORT, LA 71101  
VOICE: (318) 221-2371  
FAX: (318) 221-2372  
anthony@spanoil.com

**ANTHONY J. SPANO**  
PRESIDENT

# Monthly Permits – August 2019

*Provided by ABCD GIS Mapping*

## Texas Permits

AppDate	API	Operator	County	Purpose	TD
8/1/19	34733407	EAGLE VALLEY DEVELOPMENT LLC (238737)	NACOGDOCHES	New Drill	15000
8/1/19	34733406	BP AMERICA PRODUCTION COMPANY (040798)	NACOGDOCHES	New Drill	19500
8/2/19	18331644	TRIVIUM OPERATING, LLC (871168)	GREGG	Recompletion	11000
8/5/19	40530705	AETHON ENERGY OPERATING LLC (008555)	SAN AUGUSTINE	New Drill	14000
8/5/19	40530706	AETHON ENERGY OPERATING LLC (008555)	SAN AUGUSTINE	New Drill	14000
8/6/19	20332149	SHERIDAN PRODUCTION COMPANY, LLC (775854)	HARRISON	Recompletion	9700
8/6/19	20332146	SHERIDAN PRODUCTION COMPANY, LLC (775854)	HARRISON	Recompletion	9690
8/6/19	20332147	SHERIDAN PRODUCTION COMPANY, LLC (775854)	HARRISON	Recompletion	9700
8/7/19	18331721	DALLAS PRODUCTION, INC. (197690)	GREGG	Recompletion	8905
8/7/19	36533295	TANOS EXPLORATION II, LLC (835976)	PANOLA	Recompletion	9700
8/8/19	40530711	AETHON ENERGY OPERATING LLC (008555)	SAN AUGUSTINE	New Drill	14000
8/8/19	40530712	AETHON ENERGY OPERATING LLC (008555)	SAN AUGUSTINE	New Drill	14000
8/8/19	40530708	AETHON ENERGY OPERATING LLC (008555)	SAN AUGUSTINE	New Drill	14000
8/8/19	40530707	AETHON ENERGY OPERATING LLC (008555)	SAN AUGUSTINE	New Drill	14000
8/8/19	40530709	AETHON ENERGY OPERATING LLC (008555)	SAN AUGUSTINE	New Drill	14000
8/8/19	40530710	AETHON ENERGY OPERATING LLC (008555)	SAN AUGUSTINE	New Drill	14000
8/8/19	36538508	COVEY PARK RESOURCES LLC (182848)	PANOLA	New Drill	11100
8/8/19	36538509	COVEY PARK RESOURCES LLC (182848)	PANOLA	New Drill	10980
8/9/19	40135439	KJ ENERGY, LLC (469901)	RUSK	New Drill	10427
8/12/19	36538505	SPONTE OPERATING, INC. (810277)	PANOLA	New Drill	12000
8/12/19	41931807	XTO ENERGY INC. (945936)	SHELBY	New Drill	19000
8/12/19	41931810	XTO ENERGY INC. (945936)	SHELBY	New Drill	19000
8/12/19	36538425	ROCKCLIFF ENERGY OPERATING LLC (722890)	PANOLA	New Drill	12000
8/12/19	40135442	KJ ENERGY, LLC (469901)	RUSK	New Drill	10432
8/12/19	36534368	SHERIDAN PRODUCTION COMPANY, LLC (775854)	PANOLA	Recompletion	9450
8/12/19	41931811	XTO ENERGY INC. (945936)	SHELBY	New Drill	21500
8/12/19	20335322	COVEY PARK RESOURCES LLC (182848)	HARRISON	New Drill	11500
8/12/19	20335323	COVEY PARK RESOURCES LLC (182848)	HARRISON	New Drill	11400
8/12/19	20335324	COVEY PARK RESOURCES LLC (182848)	HARRISON	New Drill	11500
8/12/19	6730826	BROOKS PETROLEUM COMPANY (097323)	CASS	New Drill	12500
8/13/19	36538404	ROCKCLIFF ENERGY OPERATING LLC (722890)	PANOLA	New Drill	12000
8/13/19	6730827	STETSON PETROLEUM CORP. (819479)	CASS	New Drill	10700
8/14/19	36532993	SHERIDAN PRODUCTION COMPANY, LLC (775854)	PANOLA	Recompletion	8035
8/15/19	36538492	R. LACY SERVICES, LTD. (687208)	PANOLA	New Drill	12000
8/15/19	36538424	ROCKCLIFF ENERGY OPERATING LLC (722890)	PANOLA	New Drill	12000
8/15/19	20335380	COMSTOCK OIL & GAS, LP (170040)	HARRISON	New Drill	13000
8/15/19	36538511	HOPEWELL OPERATING, INC. (399624)	PANOLA	New Drill	2450
8/15/19	36538510	HOPEWELL OPERATING, INC. (399624)	PANOLA	New Drill	2450
8/16/19	40133474	CCI GULF COAST UPSTREAM LLC (120027)	RUSK	Recompletion	11065
8/19/19	36538513	PINE WAVE ENERGY PARTNERS OP, LLC (665648)	PANOLA	New Drill	10716
8/20/19	36538454	ROCKCLIFF ENERGY OPERATING LLC (722890)	PANOLA	New Drill	12000
8/22/19	36538512	HOPEWELL OPERATING, INC. (399624)	PANOLA	New Drill	2450
8/22/19	36538505	SPONTE OPERATING, INC. (810277)	PANOLA	New Drill	12000
8/23/19	36538386	ROCKCLIFF ENERGY OPERATING LLC (722890)	PANOLA	New Drill	12000
8/27/19	40135413	SABINE OIL & GAS CORPORATION (742143)	RUSK	New Drill	10900
8/27/19	20335378	TANOS EXPLORATION II, LLC (835976)	HARRISON	New Drill	11096
8/27/19	20335379	TANOS EXPLORATION II, LLC (835976)	HARRISON	New Drill	11083
8/29/19	41931812	XTO ENERGY INC. (945936)	SHELBY	New Drill	20000
8/29/19	40135443	KJ ENERGY, LLC (469901)	RUSK	New Drill	10365
8/30/19	41931808	AETHON ENERGY OPERATING LLC (008555)	SHELBY	New Drill	13000
8/30/19	41931809	AETHON ENERGY OPERATING LLC (008555)	SHELBY	New Drill	12600

See map and Louisiana Permits on following pages.



**Shreveport Petroleum Data Assn., Inc.**

**333 Texas Street, Suite 900**

**Shreveport, LA 71101**

**(318) 429-2237**

**Fax (318) 429-2441**

**Website : [www.spdalog.org](http://www.spdalog.org)**

**[spda@spdalog.org](mailto:spda@spdalog.org)**

**Cindy Shepherd**

**Manager**



**Bobby E. Jelks**  
*President*

**Faith N. Gilbert**  
*CFO*

P. O. Box 7665  
Shreveport, LA 71135-7665

Phone: (318) 221-2688

Fax: (318) 459-2935

**Edward Yarborough**  
*Exploration Manager*

**James Light**  
*Land Manager*



**GEOVENTURES™**

**Ashley Garcia**

*Assistant Program Manager*

Main +1 713 789 7250

Direct +1 281 781 1005

Fax +1 713 789 7201

Mobile +1 281 239 4576

[ashley.garcia@iongeo.com](mailto:ashley.garcia@iongeo.com)

2105 City West Blvd., Ste. 900  
Houston, TX 77042-2837 USA [iongeo.com](http://iongeo.com)



**L. CHRIS JOHNSON**  
*Manager*

2650 Fairfield Ave  
Shreveport, LA 71104  
BUS:(318) 222-6652  
FAX: (318) 222-6673  
[cjohnson@jerlic.com](mailto:cjohnson@jerlic.com)

**GRIGSBY PETROLEUM, INC.**

**Oil & Gas Exploration  
and Production**

**333 Texas St., Suite 2285  
Shreveport, LA 71101  
Phone (318) 425-5306  
Fax (318) 425-3733**

Office Phone  
(318) 222-7123

Residence Phone  
(318) 925-2348

**David L. Billingsley, Jr.**  
**Certified Petroleum Geologist**

400 Travis Street, Suite 1230  
Shreveport, LA 71101  
[DLBJR1@aol.com](mailto:DLBJR1@aol.com)

Cell Phone  
(318) 426-4320



**OIL AND GAS**

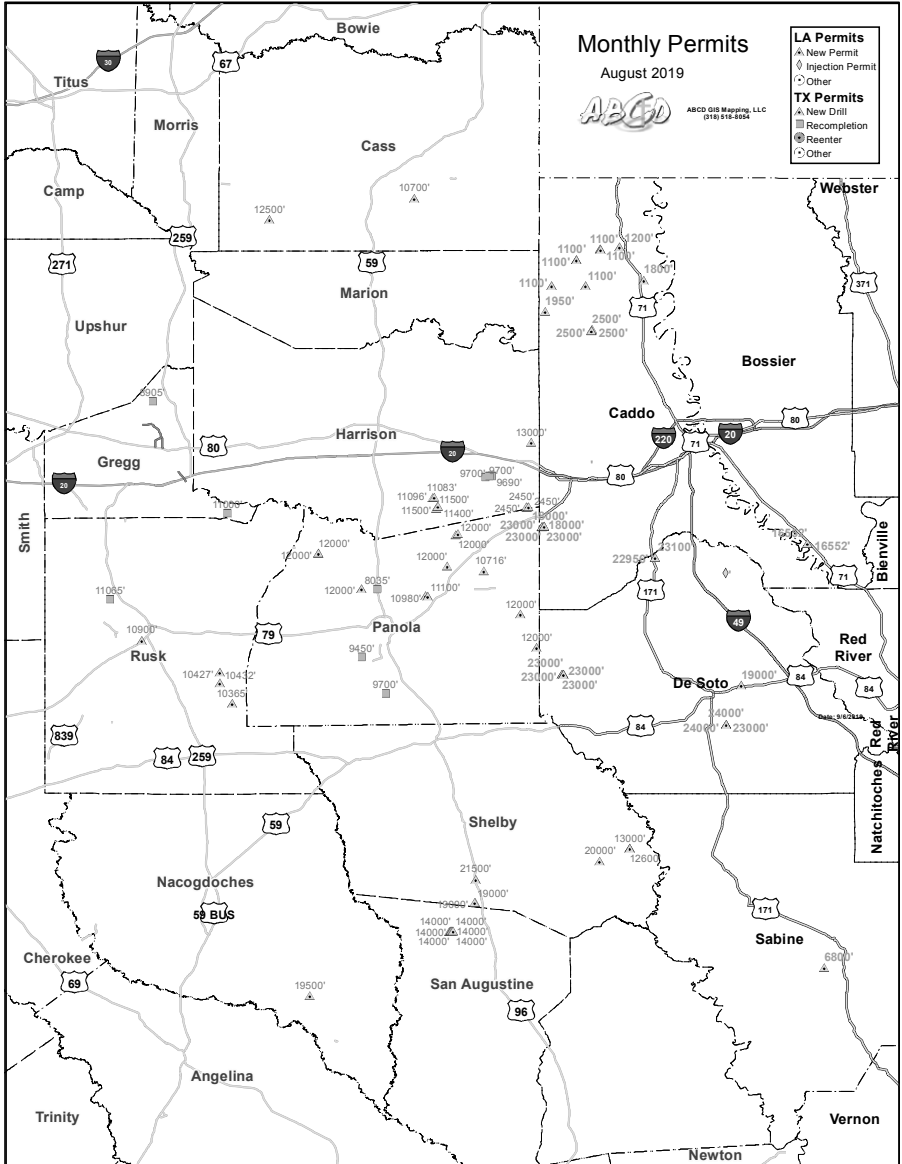
**DIANA L. CHANCE**  
**MANAGING DIRECTOR**

P. O. Box 1346 SHREVEPORT, LA 71164  
(318) 227-2131 • FAX: (318) 222-5832  
CELL: (318) 347-8848  
[WWW.DONNERPROPERTIES.COM](http://WWW.DONNERPROPERTIES.COM)

# Monthly Permits – August 2019

Provided by ABCD GIS Mapping

## Map



See Louisiana Permits listed on following page.



**WILL-DRILL  
RESOURCES  
INCORPORATED**

**PHONE (318) 222-7464  
FAX (318) 222-7466**

**416 TRAVIS, SUITE 1200  
SHREVEPORT, LA 71101  
OIL AND GAS EXPLORATION**

**Cypress Operating, Inc.**



**STEVEN A. SINGLETARY  
BEN ROBINSON**  
*Petroleum Geologists*

Office: (318) 424-2031  
Fax: (318) 425-8140

330 Marshall Street, Suite 930  
Shreveport, LA 71101



401 Edwards Street, Suite 1200  
Shreveport, LA 71101

P.O. Box 1367  
Shreveport, LA 71164

office: (318) 222-8406  
fax: (318) 222-6061  
email: mei@marlinexploration.com

**Jon Q=Petersen**  
President

**S. Cody Lenert**  
Geologist

**Autie T. Orjias**  
V.P./Land Manager

**Ryan Q=Petersen**  
Land

**Dean Giles**  
Secretary/Treasurer



**Seismic Exchange, Inc.**

**Strategic Speculative Surveys**  
Geophysical Data Marketing & Management

**Your**  
Full Service  
National  
Seismic Data  
Marketing Firm

Marketing contact:  
**Layne Williams**  
lwilliams@seismicexchange.com

**DALLAS DENVER HOUSTON NEW ORLEANS TULSA**

201 St Charles Ave., Suite 4300  
New Orleans, LA 70170  
(D) 504-510-2508 (C) 504-458-3056

www.seismicexchange.com

# Monthly Permits – August 2019

*Provided by ABCD GIS Mapping*

## Louisiana Permits

County	WellSN	WellName	PermitDate	Depth	Organization
BOSSIER	251880	SNYDER 31 H	8/2/19	16552	ENSIGHT IV ENERGY MANAGEMENT, LLC
BOSSIER	251881	SNYDER 31 H	8/2/19	16552	ENSIGHT IV ENERGY MANAGEMENT, LLC
CADDO	251886	C EDWARDS ETAL	8/7/19	1100	A. M. A. CHILES
CADDO	251887	C EDWARDS ETAL	8/7/19	1100	A. M. A. CHILES
CADDO	251897	ANKERSON	8/13/19	1100	EGH OPERATING, LLC
CADDO	251898	ANKERSON	8/13/19	1100	EGH OPERATING, LLC
CADDO	251899	M & M MINERALS LLC	8/13/19	2500	BHB OIL INC
CADDO	251906	M & M MINERLS LLC	8/20/19	2500	BHB OIL INC
CADDO	251907	M & M MINERALS LLC	8/20/19	2500	BHB OIL INC
CADDO	251909	HA RA SUE;COOK 19-18 HC	8/20/19	23000	COMSTOCK OIL & GAS--LA, LLC
CADDO	251910	HA RA SUE;COOK 19-18 HC	8/20/19	18000	COMSTOCK OIL & GAS--LA, LLC
CADDO	251911	HA RA SUE;COOK 19-18 HC	8/20/19	23000	COMSTOCK OIL & GAS--LA, LLC
CADDO	251913	MRS A M ALLEN ETAL A	8/26/19	1200	HALE OIL CO.
CADDO	251914	W P STILES A/C 2A	8/26/19	1950	JIMMY P DEMPSEY
CADDO	251916	R T DOUGLAS C	8/26/19	1800	CADDO PARISH HOLDINGS LLC
CADDO	251920	HA RA SUF;HEARNE 30-31 HC	8/27/19	18000	COMSTOCK OIL & GAS--LA, LLC
CADDO	251921	HA RA SUE;HEARNE 20-17 HC	8/27/19	23000	COMSTOCK OIL & GAS--LA, LLC
CADDO	251922	HA RA SUE;HEARNE 20-17 HC	8/27/19	23000	COMSTOCK OIL & GAS--LA, LLC
CADDO	251923	HELPMAN B	8/29/19	1100	BAYOU STATE OIL CORPORATION
CADDO	251924	HELPMAN B	8/29/19	1100	BAYOU STATE OIL CORPORATION
CADDO	990493	WATER WELL	8/19/19	0	INACTIVE OPERATOR
DE SOTO	251878	HA RC SUH;ENGLISH 1 H	8/1/19	19000	BRIX OPERATING LLC
DE SOTO	251882	HA RA SUB;RMSY 34&3-13-16 HC	8/7/19	23000	INDIGO MINERALS LLC
DE SOTO	251883	HA RA SUB;RMSY 34&3-13-16 HC	8/7/19	23000	INDIGO MINERALS LLC
DE SOTO	251884	HA RA SUB;RMSY 34&3-13-16 HC	8/7/19	23000	INDIGO MINERALS LLC
DE SOTO	251885	HA RA SUB;RMSY 34&3-13-16 HC	8/7/19	23000	INDIGO MINERALS LLC
DE SOTO	251891	HA RA SUE;BEDSOLE 3-10 HC	8/8/19	24000	COVEY PARK GAS LLC
DE SOTO	251892	HA RA SUE;BEDSOLE 3-10 HC	8/8/19	23000	COVEY PARK GAS LLC
DE SOTO	251893	HA RA SUE;BEDSOLE 3-10 HC	8/8/19	24000	COVEY PARK GAS LLC
DE SOTO	251900	HA RA SU150; DVS 8&5-15-14 HC	8/13/19	23100	CHESAPEAKE OPERATING, L.L.C.
DE SOTO	251901	HA RA SU150;DVS 8&5-15-14 HC	8/13/19	22956	CHESAPEAKE OPERATING, L.L.C.
DE SOTO	975656	RAMBIN 27 SWD	8/11/19	0	AETHON ENERGY OPERATING LLC
RED RIVER	251904	COATS 30-19 H	8/20/19	23000	BRIX OPERATING LLC
RED RIVER	251905	HA RA SUQ;COATS 30-31 HC	8/20/19	23000	BRIX OPERATING LLC
SABINE	251912	OLYMPIA MINERALS	8/21/19	6800	ROXANNA ACADIA, LLC

See Map and Texas Permits listed on previous pages.



## **BER-EX-CO., INC.**

### **Orville Roger Berg, Ph.D.**

Exploration, Exploitation  
Seismic Evaluation  
Domestic, International

400 Travis St., Suite 1612  
Shreveport, LA 71101-3108  
(318) 220-0300  
orberg@bellsouth.net

9949 Beaver Creek Drive  
Shreveport, LA 71106  
(318) 798-1748

## **GERARD ASSOCIATES, L.C.**

OIL & GAS EXPLORATION  
DEVELOPMENT AND ACQUISITIONS

### **J. A. Wojtkiewicz • Charles Gerard**

625 Market St., Suite 250  
Shreveport, LA 71101  
Tel. (318) 221-0761 • FAX (318) 221-8835

### **ODEN & ASSOCIATES, LLC**

*Oil and Gas Exploration*  
Phone: 318-222-2400  
Fax: 318-226-0840



### **ALAN SCHLICHTEMIER** *Geologist*

P.O. Box 1806  
Shreveport, LA 71166

416 Travis Street, Ste. 400  
Shreveport, LA 71101  
odenassoc@bellsouth.net



### **Kalmbach** **Production Company, LLC**

### **Sam Kalmbach** **Geologist**

400 Travis Street, Ste. 516 office: (318) 424-6566  
Shreveport, LA 71101 cell (318) 470-9977  
e-mail: sam.geo.kpc@gmail.com

## **BARROW-SHAVER** **RESOURCES COMPANY**

Oil & Gas Exploration & Development

### **Scott Owen Shaver**

Managing Partner and Exploration Manager

903-593-5221 Office  
903-593-1692 Fax  
903-561-4711 Home  
903-582-4711 Farm  
903-245-4999 Mobile

977 Pruitt Place  
Tyler, Texas 75703  
sos-bsr@tyler.net



Drilling Contractor  
Oil & Gas Operator  
Turnkey Services  
Well Service & Workover  
Working Interest Participant

**318-992-4111**

**P. O. Box 2990, Jena, LA 71342**  
**justissoil.com**

### **TIM H. MARSHALL DIRCK E. WUELLNER**

## **MARSHALL-WUELLNER, INC.**

### **Petroleum Geologists**

AmSouth Tower  
333 Texas St., Suite 608  
Shreveport, LA 71101-3671  
Office: (318) 429-2250  
Fax: (318) 429-2251

## **Mike Rogers Drilling Co., Inc.**

Drilling & Interest Participation

**MIKE ROGERS, PRESIDENT**  
**CRAIG ROGERS, VICE PRESIDENT**

Office: 870-234-2356 • Fax: 870-234-7487

1708 N. Vine Street • P. O. Box 126 • Magnolia, AR 71754  
email: mrdc1981@gmail.com

# ALTAPL-SGS Golf Tournament 2019





# JON E. SAYE

## PETROLEUM GEOLOGIST

Office: 318-221-4504  
 Fax: 318-221-4516  
 Cell: 318-458-1515

1015 Mid South Twr. • P. O. Box 137  
 Shreveport, LA 71161  
[jsaye@prodigy.net](mailto:jsaye@prodigy.net)

## COUTRET & ASSOC., INC.

**Petroleum Reservoir Engineers**  
 Property Evaluation, Reservoir Engineering  
 Fluid Injection, Property Management

**Louisiana Tower**  
**401 Edwards Street**  
**Shreveport, LA 71101**

**Telephone: (318) 221-0482**  
**Fax: (318) 221-3202**  
**E-mail: [rmcgowen@coutret.com](mailto:rmcgowen@coutret.com)**



**GEOVENTURES™**

**Alvin Rowbatham**  
 Sales Manager

Main +1 713 789 7250  
 Direct +1 281 781 1005  
 Fax +1 713 789 7201  
 Mobile +1 832 372 2366  
[alvin.rowbatham@iongeo.com](mailto:alvin.rowbatham@iongeo.com)

2105 City West Blvd., Ste. 900  
 Houston, TX 77042-2837 USA [iongeo.com](http://iongeo.com)



**Delta-T**  
**Geophysical**  
**Consulting, Inc.**

**Comprehensive Geophysical Services**

- Kingdom Suite 2d/3d pak
- Geographix
- GMA
- Neuralog
- Mesa 3-D Design
- Digirule

**Woodie Huffman, CEO**

401 Edwards Street, Suite 826  
 Shreveport, LA 71101-5510  
 Phone: (318) 221-0414  
 Fax: (318) 425-0688  
 Email: [delta@bellsouth.net](mailto:delta@bellsouth.net)

# Williamson

## OIL & GAS, INC.

**Oil & Gas Development**



Office: (318) 221-2923 400 Travis Street  
 Fax: (318) 221-3488 Suite 1410  
 Email: [bob@williamsonogi.com](mailto:bob@williamsonogi.com) Shreveport, LA 71101

**Joe R. White, Jr.**  
 Petroleum Geologist

8505 Dogwood Trail  
 Houghton, LA 71037  
 Cell. 318-423-9828  
 Hm. 318-949-3539  
 Available for Consulting

AAPG CPG #5580  
 MS RPG #0097  
 LA CPG #345  
[Jwhite1362@aol.com](mailto:Jwhite1362@aol.com)  
[Joerjrw@gmail.com](mailto:Joerjrw@gmail.com)

## Cowgill & Associates, L.L.C.

Oil & Gas Exploration & Production

**Stephen C. Cowgill**  
 Geologist/Managing Partner

P. O. Box 72180 Office: 318.429.2170  
 Bossier City, LA 71172-2180 Fax: 318.429.1170  
[cwgill@suddenlink.net](mailto:cwgill@suddenlink.net) Cell: 318.455.9516

## CSC ENERGY CORP.

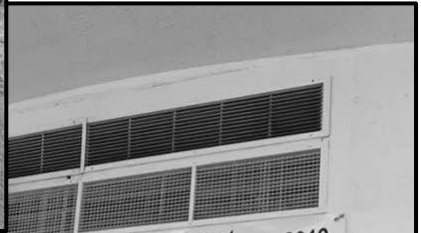
### OIL & GAS EXPLORATION

**Joel B. Chevalier**  
 PRESIDENT

416 Travis Street  
 Suite 507  
 Shreveport, LA 71101

Mobile: (318) 469-5625  
[cscenergy@bellsouth.net](mailto:cscenergy@bellsouth.net)

# ALTAPL-SGS Golf Tournament 2019





*Craig C. Barclay*  
Petroleum Geologist, L.L.C.

522 Dumbarton Shreveport, LA 71106  
Phone: (318) 869-2223  
Mobile: (318) 426-2536  
cbarclay1@comcast.net



## Weatherford

**Richard 'Dick' Swindell**  
Technical Sales Advisor  
Wireline & Borehole Seismic

**Wireline Services**  
Weatherford International, Ltd.  
1101 ESE Loop, 323, Ste. 200  
Tyler, Texas 75701, USA

Direct: +1.903.594.4926  
Main: +1.903.534.5243  
Fax: +1.903.939.8907  
Mobile: +1.903.530.4016  
richard.swindell@weatherford.com  
www.weatherford.com

## T. W. McGuire & Associates, Inc.

Registered Petroleum Engineers

416 Travis St., Suite 1400  
P. O. Box 1763  
Shreveport, LA 71166  
(318) 222-0761  
(318) 222-0799 Fax

**James T. Maranto Robert T. Maranto**

**BAKER  
HUGHES**  
a GE company



**Jim Hankla**  
Sales  
Southern US

M +1 903 312 8500  
james.hankla@bhge.com



**416 TRAVIS STREET ♦ SUITE 600**  
**SHREVEPORT, LA 71101**  
**PHONE ♦ (318) 425-0101**  
**FAX ♦ (318) 425-2211**

**MORRIS NICHOLS**  
**GARY ABRAMS**  
**JOHN STROUD**  
GEOLOGISTS



**Joseph H. McDuff**  
*Geologist*

351 Chapel Loop  
Mandeville, LA 70471  
985.845.9430  
jmcduff@bellsouth.net

October 23-25, 2019 Houston, Texas  
**69th Annual Convention**  
Gulf Coast Association of Geological Societies  
and Gulf Coast Section of SEPM

# ANNOUNCEMENT



QR Code Link to  
Convention Website

**Spread the news!**  
Please share with your colleagues!

**REGISTER NOW AT:**  
[2019.gcagshouston.com](http://2019.gcagshouston.com)  
Hosted by the Houston Geological Society

**Pre-Registration  
Discount Deadline:  
September 19**

**CAPLIS FORESTRY, LLC**

**JEFFREY W. CAPLIS**

**-CONSULTING FORESTER-**

**CELL: 318-617-9016**

**OFFICE: 318-752-3662**

**586 CAPLIS SLIGO RD.**

**BOSSIER CITY, LA 71112**

***-complete forestry services-***

- **Timber Appraisals • Timber Management • Timber Cruising •**
- **Damage Appraisals • Tree Planting •**

**B.S. LOUISIANA TECH: SCHOOL OF FORESTRY**

**T<sub>c</sub>W**

**Thomas C. Wyche**

**CERTIFIED PETROLEUM GEOLOGIST**

*Horizontal & Vertical Projects*

*E.Tx., N.La., S.Ark.*

**333 Texas St., Suite 703**

**Shreveport, LA 71101**

**318.465.2944**

**geo1tcw@gmail.com**

**LA-PG**

**AAPG-CPG**

# 2019 GCAGS/GCSSEPM 68th Annual Convention & Exhibition



## Welcome

The Houston Geological Society is proud to host the 69th annual GCAGS Convention. Now called GeoGulf, this popular convention remains a joint presentation by the Gulf Coast Association of Geological Societies (GCAGS) and the Gulf Coast Section of the Society for Sedimentary Geology (SEPM). Join us in Houston, TX on October 23-25, 2019 for the inaugural GeoGulf 2019 Houston.

## The Exhibition

The Exhibit Hall will be the host area for a number of events, there will be plenty of opportunities to explore all that the exhibitors have to offer, see old acquaintances, and forge new ones.

- The traditional Icebreaker cocktail party held on Sunday in the Exhibit Hall;
- The President's Reception will be held in the Hall from 4:30 pm to 6:00 pm on Monday; and
- Breakfast items and extended breaks in the morning and afternoon oral sessions will permit in-depth discussions with the poster presenters.

### Show Hours:

Wed, October 23 (Icebreaker) .....	6:00 pm-8:00 pm
Thurs, October 24 .....	8:30 am-6:00 pm
Friday October 25 .....	8:30 am-1:00 pm

### INTERESTED IN EXHIBITING?

Space is still available. For more information please contact Justin Vandenbrink, Exhibitor Committee Chair (Justin.Vandenbrink@tgs.com) or Mike Erpenbeck, General Chair (mike.erpenbeck@hotmail.com).

### SPONSORSHIP OPPORTUNITIES

Various levels of sponsorship are available. Enhance your firm's visibility to Gulf Coast geoscientists and their companies while contributing to the ongoing viability of GeoGulf. For further details, Contact Steve Brachman, Sponsorship Coordinator (SBrachman@WapitiEnergy.com) or Mike Erpenbeck, General Chair (mike.erpenbeck@hotmail.com).

## Registration

REGISTER NOW AT: [2019.gcagshouston.com](http://2019.gcagshouston.com)

### Industry Professional

(Early Bird through Sept. 19)..... \$300.00

Industry Professional (After Sept. 19)..... \$375.00

Student (Valid Student ID required on site)..... \$60.00

\*Student volunteers completing work assignments will be refunded their registration fee.

(Registration includes: technical program, icebreaker, admittance to exhibit hall, happy hour on Monday and Tuesday)

## Wednesday, October 23:

### Short Courses and Bus Tour Includes Buffet Luncheon

Short Courses 8:30am to 5:00pm at the Westchase Marriott (unless noted otherwise)

**Tour Bus to the Houston Museum of Natural Science,**  
9:00 am-4:30 pm

#### SC 01: The Exploration Process After Drilling a Discovery

Fred Schroeder

Cost: \$250 (8:30am-5:00 pm)

#### SC 02: Understanding Deepwater Clastic Facies

John Dribus

Cost: \$195 (8:30 am-5:00 pm)

#### SC 03: Fundamentals of Deepwater Stratigraphy and Reservoirs

Jon Rotzien, Basin Dynamics

Cost: \$195 (8:30am-4:00 pm)

#### SC 04: Principles of Paleogeographic Evolutionary Synthesis (sponsored by GCSSEPM)

James Pindell, Tectonic Analysis, Ltd.

Cost: \$195 (8:30 am-4:00 pm)

#### SC 05: Introduction to Machine Learning for Interpreters (Half Day)

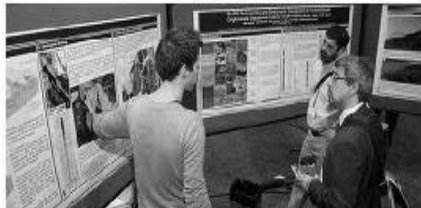
Rocky Roden, (Rocky Ridge Resources, Inc)

Cost: \$95

#### SC 06: Creativity for Geoscientists: Insights, Development and Practice (Half Day)

William (Bill) Fairhurst and Charles A. Sternbach

Cost: \$95





## 2019 GCAGS/GCSSEPM 68th Annual Convention & Exhibition

### SC 07: Advanced Analytics – Understanding the Powers and Pitfalls of Multivariate Statistics for Upstream Oil & Gas

Andrew Silver, Adret LLC  
Cost: \$95

### SC 08: Core Workshop: Upper Cretaceous Stratigraphy and Reservoirs of Texas and Louisiana

William A. Ambrose and Robert G. Loucks (BEG) (8:30 am-4:00 pm). This class will be at the BEG Core Facility, 11611 W Little York Rd, Houston  
Cost: \$195

### SC 09: Introduction to Petrophysics

Randy Mitchell (PSI)  
Cost: \$95 (8:30 am-4:00 pm)

### SC 10: Reservoir Fluids Behavior and Analysis for Earth Scientists (half day)

Toddy Guidry, Core Lab  
Cost: \$95

### SC 11: A User's Guide to Micropaleontology and Biostratigraphy: Applications in Research and Industry (sponsored by GCSSEPM)

Thomas D. Demchuk, Ryan Weber, Rebecca Hackworth  
Cost: \$95 (8:30 am-4:00 pm)

### SC 12: Reservoir Modeling and Production Forecasting

W. Scott Meddaugh, Professor, McCoy College of Science  
Cost: \$195 (8:30 am-4:00 pm)

## Wednesday Evening

### Opening Ceremony, Icebreaker, Student Poster Sessions

4:30 pm GeoGulf Convention Opening Ceremony  
6:00 pm Exhibit Hall Icebreaker and special exhibits  
6:00 pm Student Poster Sessions till 8 pm.

## Thursday, October 24

7:00 am Speaker and Poster Presenters Breakfast  
7:30 am AAPG House of Delegates Breakfast  
7:30 am Student Posters on display till noon

### Thursday Morning Sessions

- Energy Vision 2020 and Beyond- with Scott Tinker, Charles Sternbach
- Environmental Geology and Water Resources
- Understanding GOM and Offshore Mexico Plays
- Wilcox-Yegua-Vicksburg Onshore Conventional Plays

**BE A JUDGE! VOLUNTEERS NEEDED!**  
Your feedback in awarding oral and poster presenters is important. Please contact Sandy Rushworth/David Rtsch at (sandyrushw@aol.com).

### Thursday Afternoon Sessions

- 1:00 pm - Professional Posters on display in the Exhibit Hall
  - Giant Fields Deepwater GOM
  - Data Analytics and Seismic Interpretation
  - Understanding GOM and Offshore Mexico Plays II
  - Eagle Ford-Haynesville-Austin Chalk
- Exhibit Hall reception and Networking Dinner Exhibit Hall Features Sediments from Hurricane Harvey Art and Cores from the Bureau of Economic Geology.

## Friday October 25

7:00 am Speaker and Poster Presenter Breakfast  
7:00 am Women's Networking Breakfast  
8:00 am Professional Posters on display till 1 pm.

### Friday Morning Sessions

- Business of Geology Panel Discussion
  - After Harvey What Have We Learned?
  - Integration of Seismic Processing, Gravity and Magnetics
  - Global Deepwater Reservoirs I
- AAPG DPA Luncheon-  
John Jordan, Jordan Consulting, "Ethics Lecture"  
GCSSEPM Luncheon  
James Pindell, Tectonic Analysis, Ltd., "Mexico Tectonics"  
Field Trip to Mason County early afternoon departure from the Westchase Marriott

### Friday Afternoon Sessions

- Hurricane Harvey Art and Insights
- Discussion on Geo-Careers
- Rock Mechanics and Log Analysis
- Carbonate and Clastic Mega Regional Insights
- Global Deepwater Reservoirs II



## 2019 GCAGS/GCSSEPM 68th Annual Convention & Exhibition

### Field Trips

#### Friday-Saturday October 25-26

Departures 8:30 am, return 4:30 pm other than Friday afternoon Mason County trip.

#### FT 1: Hands on Geophysical Data Acquisition

Dr. Robert Stewart  
Cost: \$175.00

#### FT 2: World Class and Spectacular Late Cambrian Microbial Reef Outcrops in Mason County, Texas, (Friday to Sunday)

Dr. Andre Droxler, (3 days, departs early Friday afternoon from WestChase Marriott)  
Cost: \$600.00

#### FT 3: Upper Texas Coastal Barrier Dynamics:

Observations Used in Digital Modeling,  
Dr. Jeff Nitrouser  
Cost: \$150.00

#### FT 4: Surface Faults in West Houston,

Carl Norman and Richard Howe (HGS)  
Cost: \$150.00

#### FT 5: Visit the Hockley Salt Mine and Discover the Pleistocene Mega-Fauna Fossils from Northwest Harris County

Ken Theis  
Cost: \$150.00

#### FT 6: Artistic, Human Impact and Geologic Investigation of Hurricane Harvey's Deposits Near Downtown Houston

Jerry Kendall  
Cost: \$95.00 (half day)

#### FT 7: Panther Creek Outcrops and Fossil Collecting

Constantin Platon  
Cost: \$95.00 (half day)

### Luncheons

#### ALL CONVENTION LUNCHEON (Thursday Oct 24) "Exploration Courage"

John Seitz, Gulf Slope Energy

#### DPA LUNCHEON (Friday Oct 25)

"Gray Areas: Interactive Application of Business Ethics in the Geoscience Profession"

John Jordan, Jordan Consulting

#### GCSSEPM LUNCHEON (Friday Oct 25)

"The Geological Evolution of Mexico"  
James Pindell, Tectonic Analysis, Ltd.

### Panel Discussions

#### Business Panel, Friday Morning Oct 25

Deal Trends, Investment Outlooks, Capital Flow

#### Skills and Career Panel, Friday Afternoon Oct 25

Skills Outlook, Career Assessment and Management  
Industry leaders will lead discussion in both panels

### Convention Hotel

#### Houston Marriott Westchase, 2900 Briarpark Dr

Located in west Houston Westchase Business District just inside West Beltway 8

Large parking area and is FREE

Convention rate: \$169/night; see link in Convention Website, 2019.gcagshouston.com



Pre-Registration  
Discount Deadline:  
September 19





# Like what you see?

Fill out and mail in this form or find it online at [SGS1.org](http://SGS1.org).

You can renew online instead  
of filling out this card!  
★ [www.sgs1.org](http://www.sgs1.org) ★

Active \$25 / yr	
Associate \$25 / yr	
Honorary \$0 / yr	
Student \$5 / yr	
Optional Donation SGS Scholarship Fund	
Optional Donation Faithful Friends	
<b>Total Payment</b>	

NAME (Please Print) \_\_\_\_\_

Check if new applicant or change of address.

SHREVEPORT GEOLOGICAL SOCIETY, P.O. BOX 750 • SHREVEPORT, LA 71162

DATE \_\_\_\_\_

APPLICANT OR MEMBER PLEASE TYPE OR PRINT

LAST NAME	FIRST	INITIAL	NICKNAME			
COMPANY			POSITION OR TITLE			
COMPANY MAILING ADDRESS		CITY	STATE	ZIP	COMPANY PHONE	
HOME ADDRESS		CITY	STATE	ZIP	HOME PHONE	
FAX NUMBER		E-MAIL ADDRESS		CELL PHONE		
SCHOOL	DEGREE	MAJOR	YEAR			
PROFESSIONAL AFFILIATIONS	AAPG <input type="checkbox"/> APGS <input type="checkbox"/>	GSA <input type="checkbox"/> PS <input type="checkbox"/>	SEG <input type="checkbox"/> AGI <input type="checkbox"/>	SEPM <input type="checkbox"/> SIPES <input type="checkbox"/>	AIME <input type="checkbox"/> SPE <input type="checkbox"/>	SPWLA <input type="checkbox"/> OTHER <input type="checkbox"/>

OUTLINE OF EXPERIENCE \_\_\_\_\_  
SPOUSE'S NAME \_\_\_\_\_

PREFERRED MAILING ADDRESS  
 HOME  BUSINESS  
 EMAIL ME THE NEWSLETTER  
(no printed copy will be mailed)

## QUALIFICATIONS FROM BY-LAWS

In order to be eligible for active membership, an applicant shall be engaged in the practice or teaching of geology or related sciences.

In order to be an associate member, an applicant shall be interested in geological science but not actively engaged in the practice or teaching of geology or related sciences.

### TO THE EXECUTIVE BOARD:

I hereby apply for  ACTIVE  ASSOCIATE membership in SHREVEPORT GEOLOGICAL SOCIETY and pledge myself to abide by its Constitution and By-laws.

Date: \_\_\_\_\_ Signature: \_\_\_\_\_

SPACE BELOW TO BE USED FOR PROCESSING ONLY

#### Membership Committee

Received: \_\_\_\_\_

Approved for:  Active  
 Associate  
 Student

#### Executive Board

Approved: \_\_\_\_\_ SECRETARY

Date: \_\_\_\_\_



# SHREVEPORT GEOLOGICAL SOCIETY

## Committees & Chairmanships

2019-2020

Advertising	Kurt Ley	Kingwood Exploration, LLC	946-8585
Budget	Morris Nichols	Stroud Petroleum, Inc.	425-0101
Continuing Education	NEEDED		
Employment	Cody Lenert	Marlin Exploration	222-8406
Entertainment	John Hansen	Hansen Oil Corp	861-2269
Environmental	David Williamson	ATC Group Services LLC	868-4848
Faithful Friends	Zach Gray	Ensignt Energy	429-2220
Field Trip	NEEDED		
5K Run	Mark Dunham	Sugar Creek Producing Co.	221-2899
Golf Tournament	Scott Comegys	O'Brien Energy Co	865-8568
	Cody Lenert	Marlin Exploration	222-8406
Government Affairs	Scott Stroud	Stroud Petroleum, Inc.	425-0101
Historical	Ralph Richardson	Sartor-Richardson	869-4100
Honorary Membership/Awards	David Billingsley	Independent	222-7123
Investments	Morris Nichols	Stroud Petroleum, Inc.	425-0101
Library	Ralph Richardson	Sartor-Richardson	869-4100
Maps in Schools	Matthew Chumley	Nadel and Gussman Ruston, LLC	222-0908
Membership	Sarah Wilkes	LA Dept. of Env. Quality	525-6417
Membership Directory	Sarah Wilkes	LA Dept. of Env. Quality	525-6417
Newsletter	Kevin Hill	Hill Geophysical Consulting	221-3329
Program	Matthew Chumley	Nadel and Gussman Ruston, LLC	222-0908
Publications	Annie Green	Nadel and Gussman Ruston, LLC	222-0908
Revel Mock Dig	Carrie Salinas	Virtus Environmental	518-1622
	NEEDED		
Scholarship Endowment	Alan Schlichtemier	Oden & Associates, LLC	222-2400
Scholarship Grants	Alan Schlichtemier	Oden & Associates, LLC	222-2400
Sci-Port Discovery	Zach Kelly	Milestone Energy	212-0470
Tennis Tournament	Anthony Spano	Spanoil Exploration, Inc.	221-2371
Website	Rachel Mc Nerney	Hill Geophysical Consulting	221-3329
Youth Activities	Larry Frizzell	TMR Exploration, Inc.	746-3616

### AAPG Delegate

(7/1/16 -6/30/19)

Executive Assistant	Mark Dunham	Sugar Creek Producing	221-2899
SGS Auxiliary President	Annie Green	Nadel and Gussman Ruston, LLC	222-0908
	Susan Schroeder		869-2401

### HONORARY MEMBERS

James D. Aimer <sup>^</sup>	James B. Harris <sup>^</sup>	Paul Todd Landes, Jr. <sup>^</sup>	C. Ray Scurlock
William E. Bancroft <sup>^</sup>	William E. Hayes <sup>^</sup>	W. W. Lincoln <sup>^</sup>	Walter H. Spears <sup>^</sup>
Michael W. Beckman <sup>^</sup>	Roy T. Hazzard <sup>^</sup>	William R. Meaney	William C. Spooner <sup>^</sup>
Orville Roger Berg	Dr. Leo Hermann <sup>^</sup>	Clarence L. Moody <sup>^</sup>	George D. Thomas <sup>^</sup>
B. W. Blanpied <sup>^</sup>	Kevin B. Hill	John T. Palmer	Arthur H. Trowbridge
Prentis L. Boatner, Jr.	Charles J. Hoke <sup>^</sup>	Thomas H. Philpott <sup>^</sup>	Henry J. Tyler <sup>^</sup>
Alan L. Brittain	Perry G. Holloway <sup>^</sup>	William M. Plaster <sup>^</sup>	Claude N. Valerius <sup>^</sup>
John Franks <sup>^</sup>	Walter E. Hopper <sup>^</sup>	Gene R. Robinson <sup>^</sup>	Warren B. Weeks <sup>^</sup>
Victor P. Grage <sup>^</sup>	E. B. Hutson <sup>^</sup>	C. Lane Sartor <sup>^</sup>	Percy J. Wheeler, Jr.
John C. Grunau <sup>^</sup>	L. Lee Kincade <sup>^</sup>	Erwin W. Saye <sup>^</sup>	B. Ross White <sup>^</sup>
J. Frank Harrell <sup>^</sup>	Joseph O. Laird <sup>^</sup>	Fred R. Schroeder <sup>^</sup>	R. M. Wilson <sup>^</sup>

(<sup>^</sup> deceased)

**Shreveport Geological Society**

P.O. Box 750 • Shreveport, LA 71162