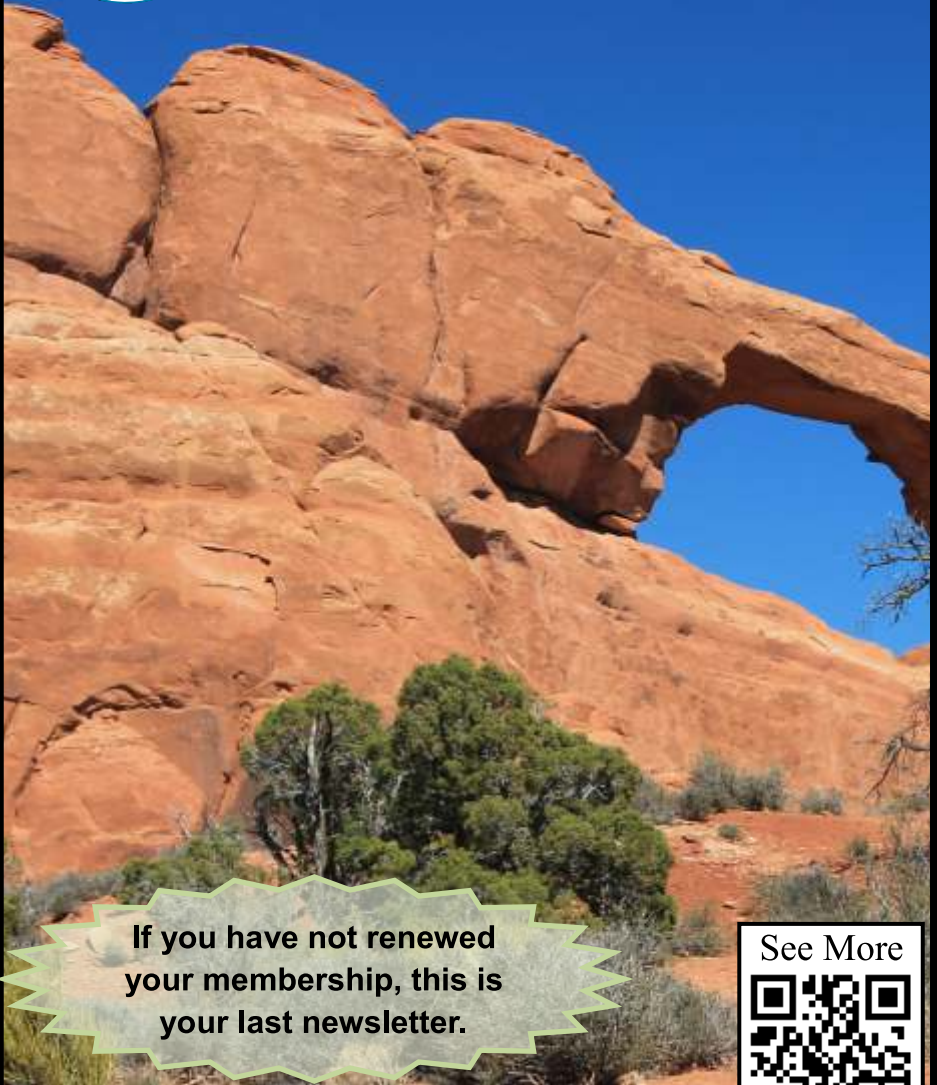




Shreveport Geological Society **NEWSLETTER**

Volume 56, No. 2

October 2016



**If you have not renewed
your membership, this is
your last newsletter.**

See More



SGS1.ORG

Bias in Science p. 11

Halloween Party p. 19

*Message
from*



*the
President*

*F*all weather brings colder temps, but could that heat up the gas market? A cold winter has been predicted, and gas prices recently touched \$3.00 per MCF. While stockpiles are up, injection over the summer has been below average, and consumption has continued to grow. Most US Consumption growth has been due to increasing demand for electric power generation. Looking at the NOAA three month outlook for the winter months of January, February, and March 2017, we see a forecast for below average temperatures for the northern half of the country. Presumably a cold winter would continue or even outpace the current demand growth forecasts.

On the export front, Cheniere has reached substantial completion of train two at its Sabine Pass LNG plant. As of the end of July 2016, a total of 63.4 BCF had been shipped out of the facility. Train 3 is in the process of commissioning, and should reach substantial completion in the summer of 2017. Cameron LNG is in the process of converting from an import to an export facility and expects to be completed in 2018 with full operations in 2019.

What all this means for prices remains to be seen. The Energy Information Agency predicts that Henry hub natural gas prices will rise in the fourth quarter to a peak of \$3.05 in February 2017. Current NYMEX futures for the same month are trading at \$3.448 as of September 21. While not exactly a return to boom times, it sure beats the \$1.95 prices of the early summer!

Turning to Society business, we had another successful golf tournament this year with over 180 players in attendance. While the downturn has impacted sponsors' willingness and ability to give, we

LRG **LAFAYETTE** **GEOLOGICAL** **RESEARCH** **CENTER, LLC**

201 Heymann Blvd., Suite 33 • Lafayette, LA 70503
Tel: 337-233-8197 • Fax: 337-233-8177

COVERAGE:

- Louisiana / Federal / State Offshore
- *Multi State Geo Tech Services • Completion Data
Production Data • Well Logs • Maps*

~ MEMBERSHIPS AVAILABLE ~

The Industry's Premier • Well Data Center

orders@lafayettegrc.com

CALL OR EMAIL TODAY FOR MORE INFORMATION!

were able to raise enough money to have a full day tournament complete with a banquet and door prizes! Thanks go out to all who volunteered and participated in what is definitely a favorite event among the community.

We had a great presentation by Dr. Charles Kerans from the University of Texas to kick off our luncheon meetings. Charlie is an expert on carbonate sequence stratigraphy, and I think he taught us all a thing or two about the carbonates of the gulf coast. Our next speaker will be Pete Rose, and he will be discussing cognitive bias in science. This meeting will also fulfill the ethics requirement for the licensed Professional Geoscientists.

In the coming months we will have several other events including the Mock Dig, a Halloween party, and a continuing education seminar. Please sign up to work at least one shift at the mock dig if you haven't already. It's a great way to connect with the community and inspire young people who might have an interest in geology. There is a signup sheet on the website at SGS1.org, or you can sign up in the log library.

We are joining forces with the ALTAPL folks to have a big Halloween party at the Petroleum Club on Saturday, October 29th. It's sure to be a great time so start planning your costumes now! Also watch your email for details about our upcoming continuing education class. Xingwen Chen will be schooling us on where to find cheap data; something we could all use.

Halloween Party
October 29

I am very proud to inform the society that one of our members, John Silvernail, has written an article for the AAPG Explorer that will be published in the October edition. Please take a moment to read the column, which recounts John's experience drilling wells in Cuba in the mid-1950s. It's a very interesting story and one which very few people could tell. We are lucky to have John and others like him in our society.

-John Stroud

WHEN IT HAS
TO BE DONE
FAST!

400 TRAVIS ST.
SUITE 1606
S'PORT, LA
71101



COMPUTER
MAPPING FOR
THE OIL & GAS
INDUSTRY.
COLOR PLOTTING
AND DIGITIZING.

JOHN
HARRELL,
OWNER
ANDY
CARDIN,
DRAFTSMAN

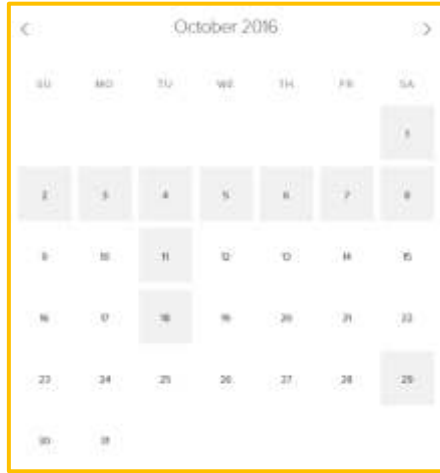
PHONE

221-7780



skrivanos
engineering, inc.

Calendar of Events



View this interactive calendar at SGS1.org

October 1-8

Mock Dig at the Red River Revel. Volunteers needed.

October 11

Board Meeting; 11:45 a.m. - 1 p.m.; Petroleum Club 15th Floor

October 18

Monthly Meeting; 11:30 a.m. - 1 p.m.; Petroleum Club 15th Floor
Peter R. Rose presents “Cognitive Bias, the Elephant in the
Living Room of Science and Professionalism”

October 29

Halloween Party; 7 - 11 p.m.; Petroleum Club 16th Floor

On the Cover: “Elephant Arc”.

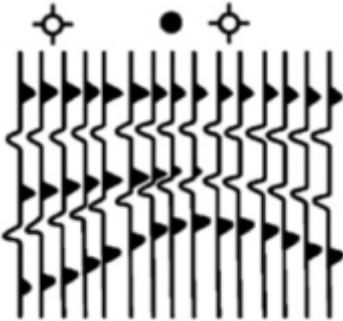
Interior Art: Page 1 “Breaking Away IV” (*detail*); Page 9 “Jupiter’s
Unveiling” (*detail*); Page 33 “Somehow Always Connected” (*detail*);
all by Christine Bailey.

Courtesy of the Norsworthy Gallery,
214 Texas St., Shreveport, LA 71101.

Online at TheNorsworthy.com.

Contact the Newsletter Editor: 1RachelHill@gmail.com

Hill Geophysical Consulting



Kevin B. Hill

*Integrating Geophysical Technology
with Geology*

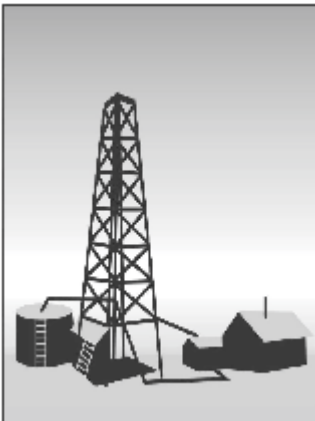
**What's Under Your
Feet? Find out:
HILLGEO.COM**



415 TEXAS ST., SUITE 200
SHREVEPORT, LA 71101

318.221.3329
kevin@hillgeo.com

CAMTERRA RESOURCES, INC.



Main Office
2615 East End Blvd. South
Marshall, Texas 75672
Telephone: (903) 938-9949
Fax: (903) 935-0521
Email: camterra@camterra.com

Chief Executive Officer:	Zach Carlile
President:	Paul Marchand
Land Manager/General Counsel:	Allen C. Stagers, Jr.
Asst. General Counsel:	Pam Johnson
Sr. Landman:	Steve Copeland
Sr. Landman:	Jason Derebery

Owning Properties in Texas, Louisiana, Arkansas, Mississippi, and New Mexico

The October Meeting

Make your
RESERVATION

Peter R. Rose

presents

“Cognitive Bias, the Elephant in the Living Room of
Science and Professionalism”

11:30 a.m. Tuesday, October 18

The Petroleum Club of Shreveport, 15th floor

Cost: \$20, Children 10 and under \$8

We encourage members to invite guests, spouses, and
friends to any of our meetings.

If you'd like a seat, kindly **RSVP**
by **Friday, October 14** at SGS1.org,
or email or call in your reservation to
Scott Comegys

scomegys@obrienenergyco.com

318-841-2702

Name: _____

I will bring ___ guest(s): _____



Jim Hankla
Sales
Southern U.S.

115 Jordan Plaza Blvd., Suite 200
Tyler, Texas 75704
Mobile: 903-312-8500

Email: james.hankla@bakerhughes.com

www.bakerhughes.com



Joseph H. McDuff
Geologist

351 Chapel Loop
Mandeville, LA 70471

985.845.9430

jmcduff@bellsouth.net



Document Solutions

CONSTRUCTION DOCUMENT & INFORMATION MANAGEMENT SERVICES

MANAGED PRINT SERVICES

ARCHIVING & INFORMATION MANAGEMENT

GRAPHIC DESIGN SERVICES

BANNERS, YARD SIGNS, TRUCK MAGNETS, WINDOW DECALS

OVERSIZED SCANS, & COPIES

shreveport.production@e-arc.com

305 Market Street, Shreveport, LA 71101 | 318.221.0674 | www.e-arc.com

Peter R. Rose



Biography

Pete Rose (Ph. D., Geology, University of Texas, Austin) has been a professional geologist for 56 years, specializing in Carbonate Stratigraphy, Petroleum Geology, Basin Analysis, E&P Risk Assessment, and Mineral Economics. In 1998, he founded Rose & Associates, LLP. Pete retired in 2005; the Firm continues as the global standard among consulting companies in the field of E&P Risk Analysis.

His 2001 AAPG book, *Risk Analysis and Management of Petroleum Exploration Ventures*, now in its 7th printing, is widely considered to be the "Bible" in its field, and has been translated into Japanese, Chinese, and Russian. He has authored or co-authored more than 80 published articles and over 300 presented papers on an extremely wide variety of topics (Micropaleontology to Petroleum Economics!). From 2001 to 2004 Pete wrote a regular column, "The Business Side of Geology", for *The Explorer*, AAPG's monthly news magazine.

Pete received the coveted Parker Memorial Medal from the American Institute of Professional Geologists in 1998. In 2005 he became the 89th President of AAPG. He was co-chair of the 2007 Interdisciplinary Conference on Oil and Gas Reserves Definitions, held in Washington, D.C., which was instrumental in encouraging the U. S. Securities and Exchange Commission to modernize its rules on oil and gas reserves reporting, as occurred the following year. This facilitated the investment component of the "shale revolution" in the U. S. during the 2008-2015 development period. In 2013 he became the first American recipient of the prestigious Petroleum Group Medal



**WILL-DRILL
RESOURCES
INCORPORATED**

**PHONE (318) 222-7464
FAX (318) 222-7466**

**416 TRAVIS, SUITE 1200
SHREVEPORT, LA 71101
OIL AND GAS EXPLORATION**

Cypress Operating, Inc.



**STEVEN A. SINGLETARY
BEN ROBINSON**

Petroleum Geologists

Office: (318) 424-2031
Fax: (318) 425-8140

330 Marshall Street, Suite 930
Shreveport, LA 71101



Marlin
EXPLORATION, L.L.C.

401 Edwards Street, Suite 1200
Shreveport, LA 71101

P.O. Box 1367
Shreveport, LA 71164

office: (318) 222-8406
fax: (318) 222-8061
email: mei@marlinexploration.com

Jon Q-Petersen
President

S. Cody Tenert
Geologist

Autie T. Orjias
V.P./Land Manager

Ryan Q-Petersen
Land

Dean Giles
Secretary/Treasurer



Strategic Speculative Surveys
Geophysical Data Marketing & Management

YOUR
Full Service
National
Seismic Data
Marketing Firm

Office Locations:
Larry Tull
Sandy Smith
Holly Howard

**DALLAS DENVER HOUSTON NEW ORLEANS
OKLAHOMA CITY TULSA CORPUS CHRISTI**

9400 N. Central Expressway, Suite 1211
Dallas, Texas 75231

214-373-1211 FAX 214-373-7068

www.seismicexchange.com

of the Geological Society of London, and in 2014 AAPG honored him with its Halbouty Outstanding Leadership Award.

His many years of experience, helping thousands of geoscientists to improve their geotechnical performance by detecting and reducing bias in their prospect and play evaluations, have prepared Pete Rose well to address the broader effects of cognitive bias in science and professional matters, the subject of his distinguished lecture, "Cognitive Bias, the Elephant in the Living Room of Science and Professionalism".

Abstract

“Cognitive Bias, the Elephant in the Living Room of Science and Professionalism”

Cognitive bias, in its many manifestations, is the major cause of geotechnical overestimation and faulty probability forecasts in petroleum geoscience. The five most prevalent cognitive biases in

COGNITIVE BIAS:

- Inherent thinking errors made in acquiring and processing information ... preventing us from accurately grasping reality, even if confronted with needed data to form an accurate view.
- Analogous to optical illusions – the error remains compelling even if one is fully aware of reality.
- Intrinsic to human thought, so any system of acquiring knowledge to describe reality must include mechanisms to control for bias.
- May result from holding to one's preferences and beliefs regardless of contrary information
- Just knowing about common biases doesn't guarantee that you are free from them.



*Great People. Great Plays.
Since 1908.*

MID-CONTINENT REGION

**6120 South Yale Ave.- Suite 1300
Tulsa, Oklahoma 74138-4210
918-488-7600
SM-Energy.com**

**R. LACY /
GRAIN ENERGY**

*Oil and Gas Investments
Exploration and Development*

**222 EAST TYLER STREET
LONGVIEW, TX 75601
903-758-8276 (O)**

Jamey Walker
*V. P. Exploration
jwalker@rlacy.com*

Chris Bresch
*Sr. Geoscientist
cbresch@rlacy.com*

Hunter Brumble
*Staff Geoscientist
hbrumble@rlacy.com*

Scott Caswell
*Sr. Geophysicist/Geoscientist
scaswell@rlacy.com*



**Address: 401 Edwards Street, Suite 1601
Shreveport, Louisiana 71101**

**Telephone: (318) 227-8668
Fax: (318) 227-9012**



*Operating in the ArkLaTex, MAFla,
and South Texas Areas*

**MUSLOW
OIL & GAS, INC.**

**333 Texas Street
Suite 2222
Shreveport, LA 71101**

Eric Weiss
President

**(318) 221-8694
Fax: (318) 227-2106**

petroleum E&P are: Confirmation Bias; Overconfidence; False Analogs; Anchoring; and Motivational Bias. They are caused by premature selection of theory, personal hubris, lack of perspective, lack of imagination, laziness, and excessive self-interest. Important influences include the existing organizational reward system, economic pressure for objective geotechnical results, and the anticipated consequences of project reviews and evaluations. In fact, the field of E&P Risk Analysis emerged during the 1980s to help identify and reduce bias in assessing the value of new plays and prospects. Companies that routinely utilize disciplined methods of Risk Analysis tend to deliver on their E&P promises.

Pioneering work by Nobel laureate Daniel Kahneman, his late colleague Amos Tversky, and others since the 1970s has made scientists much more aware of the dangers that Cognitive Bias pose for the practice of objective, reliable science. Even so, increasing awareness of obvious agenda-serving scientific publications, slanted peer review (“pal-review”), withholding of codes and formulae, unreproducible experimental results, and scientific fraud indicate that procedures to identify and limit Cognitive Bias are not being appropriately utilized throughout the scientific community. This is probably because many of the organizational and economic pressures routinely experienced by E&P geoscientists are not as intensely or widely operative within academic and governmental organizations.

The late physicist and Nobel laureate Richard Feynman recognized (1974) the danger of Cognitive Bias: “the first principle is that you must not fool yourself – and you are the easiest person to fool.” Feynman knew that dedicated practice of the Scientific Method is the key to elimination of Cognitive Bias, recommending “a kind of



Keep in Touch
through the Shreveport Geological
Society LinkedIn Group.

**HARGROVE
SMELLEY
STRICKLAND
&
LANGLEY**

A PROFESSIONAL LAW CORPORATION

Louise F. Pearce

Attorney at Law

Bus: (318) 429-7200

Fax: (318) 429-7201

www.hssl-law.com

Email: lpearce@hss-law.net

American Tower, Suite 600

401 Market Street

Post Office Box 59

Shreveport, Louisiana 71161-0059

TMR Exploration, Inc.

Ray Lasseigne, President

Larry Frizzell, Exploration Manager

Mack Thomas, Operations Manager

Terry Antee, Consulting Geologist

P. O. Box 5625

Bossier City, LA 71171-5625

(318) 746-3616

Fax (318) 746-6218

**SHREVEPORT
PETROLEUM DATA
ASSOCIATION, INC.**

333 Texas Street, Suite 900
Shreveport, LA 71101-3678

(318) 429-2237

FAX (318) 429-2441

No Initiation Fee

Demetra Morgan

MANAGER



Curt Bateman | *Geophysicist*

CurtBateman@InspirationEnergy.net

Carl E. Gray | *Geologist*

CarlGray@InspirationEnergy.net

Sarah Bedgood | *Secretary/Geotech*

903-581-5800

821 ESE Loop 323

Suite 420

Tyler, TX 75701

scientific integrity, a principle of scientific thought that corresponds to a kind of utter honesty – a kind of leaning over backwards.” A practical research approach familiar to many geoscientists is T. C. Chamberlain’s “Method of Multiple Working Hypotheses”, introduced in 1890. Also important is the separation of E&P activity into two essential and complementary components – 1) play and prospect generation; and 2) play and prospect risk assessment. Professionalism constitutes the conscious honoring of such principles.

Sound and objective science is essential to the continued progress of Society. Is it possible that methods widely applied by Petroleum Geoscience to identify and counter Cognitive Bias might also be useful to other branches of Science?

Coming Up

<u>DATE</u>	<u>SPEAKER</u>	<u>TOPIC</u>
11/15/2016	Tom Goddard	Methane leakage and EPA new source performance standards (NSPS)
12/20/2016	Suniti Karunatillake	Water in the Martian Soil
1/17/2017	Martin Cassidy	The Norphlet Desert & Its Sand Dunes: In a sub-aerial environment, but below sea level



At the September meeting, Charles Kerans presented “Cretaceous Carbonate Sequences and Reservoir Systems of the Gulf of Mexico”.

Visit

SGS1.org/lectures
to find slides from the presentation.

Baldwin Madden Energy, LLC

*Oil and Gas Property
Acquisitions and Development*

George A. Baldwin, Jr.

Gregory K. Madden

Christopher D. Franks
Senior Geologist

Lonnie J. Shaw
Director of Accounting & Finance

(318) 429-2220

(318) 429-2229 Fax

333 Texas Street, Suite 1919
Shreveport, LA 71101-3676

Reynolds Drilling Company, Inc.

7591 Fern Ave., Suite 2001
Shreveport, Louisiana 71105-5502

Phone: (318) 227-0118

Fax: (318) 227-0171

reydrill@bellsouth.net

Terry Pat Reynolds
President

STROUD PRODUCTION, LLC

333 Texas Street, Suite 860

Shreveport, Louisiana 71101-5302

Voice: (318) 429-2260

Fax: (318) 429 2255

Email: ras@spllc.com



SPANOIL INCORPORATED

416 TRAVIS ST., SUITE 806
SHREVEPORT, LA 71101
VOICE: 9318) 221-2371
FAX: (318) 221-2372
anthony@spanoil.com

ANTHONY J. SPANO
PRESIDENT

Mock Dig 2016

October 1 - 8th

Sign up now to **play** in the dirt
and *inspire* future geologists
at this year's Red River Revel!



Co-chair and other volunteers are needed.

Please contact Carrie Salinas:

csalinas@virtusenvironmental.com

Invest in the Future

You can **donate** to the SGS Scholarship Fund through the website at SGS1.org/scholarships, or by writing a check to the SGS with "Scholarship" in the memo line. Feel free to include an "in memory of" or "in honor of" note there as well.

Mail to: Shreveport Geological Society,
P.O Box 750, Shreveport, LA 71162.



MILESTONE ENERGY, LLC

Oil & Gas Exploration and Development

Joseph A. Lott

Geologist / Managing Partner

Zach Kelly
Geologist

Zach McDonald
Geologist

Thomas A. Giles
Land Manager

333 Texas Street, Suite 516
Shreveport, Louisiana 71101
jlott100@bellsouth.net

Office: 318.212.0470
Fax: 318.212.0469

- Looking for Prospects
- Geophysical Consultant
- Landmark Graphics Corp. Software
- Synthetic Seismograms, modeling and cross sections



- Digitizing capability
- 2-D & 3-D Seismic Acquisition, Processing & Interpretation
- SeisVision 2-D & 3-D interpretation and mapping software

Bobbye Ben Taylor - President

O: 120 S Broadway, Suite 102
Tyler, Texas 75702
Mobile: (903) 521-3182

H: 7130 Holly Square Court
Tyler, Texas 75703
Email: taylor@webfoxmail.com

LOOKING FOR PROSPECTS

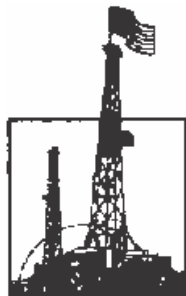
Let me tailor your geophysical needs.

HALLIBURTON

Do you require an integrated approach to total well construction, formation evaluation, and optimized production? Make the jump to our team. We have the best local people for designing your well, performing state of the art formation evaluation, and planning and executing your completion.

Logging & Perforating
Production Enhancement (Stimulation)
Cementing
Security Bits
Tools, Packers, & TCP
Coli Tubing Services

Shreveport Sales 318-673-4400
Tyler sales 903-581-5263
Kilgore Operations 1-800-654-6926



PALMER
PETROLEUM
INCORPORATED

401 Edwards Street
Suite 1400
Shreveport, LA
71101-3143
(318) 222-0517

The Shreveport Geological Society & The Petroleum Club Party Committee present

BOO'S & Booze

Something is brewing and it will be ghoulishly fun
A wicked good time for everyone

SATURDAY

OCTOBER 29 7PM-11PM

Petroleum Club

Main Dining Room on the 16th floor

Enjoy the sounds of The Good News Band
heavy hor d'oeuvres & cash bar

Party Attire or Costumes

\$35 per person • \$30 SGS members

Call for reservations 318.425.4251

Kingwood Exploration, LLC
Oil & Gas Exploration
and Production



Kurt M. Ley

Exploration Manager & Partner

Robert E. Braswell

Engineering/Operations Manager & Partner

416 Travis St., Suite 1100
Shreveport, LA 71101

Phone: 318-946-8585
Fax: 318-946-8287

kurt.ley@kingwoodexploration.com
robert.braswell@kingwoodexploration.com



ANDERSON
OIL & GAS, INC.

Established by G.M. Anderson

333 TEXAS ST., SUITE 2020

SHREVEPORT, LA 71101-5357

Phone: (318) 227-2000

Fax: (318) 425-5935



★ Milam, TX
★ Many, LA

The Horizontal Specialists!!

We work with the greatest companies
in the world, please give us a call
to see what we can do for you!!

Joe Eidson 318-623-5077

Michael Danos 318-332-7673

P. O. Box 1209, Many, LA 71449

Security Exploration, Inc.

8509 Line Avenue
Shreveport, LA 71106



J. Stafford Comegys
President

Donna Walker
Geologist

Barbara Lyles
Office Manager

OIL & GAS EXPLORATION

Tel: (318) 222-1066

Fax: (318) 222-4932

You Are Invited to a
Shreveport Geological Society
Continuing Education Event

"Geo-Spatial Resources in Time of Recovering"

by: Xingwen Chen

Geographical Information Systems and Data in the Oil and Gas Industry

When: November 16, 2016 - 8:30am to 5:00pm

Where: Petroleum Club of Shreveport - 15th Floor

\$90.00 per person, includes materials and meal

Limited to the first 70 Paid Reservations by November 9th.



Dr. Xingwen Chen graduated from Wuhan University, China, with a BS degree in Photogrammetry & Remote Sensing. He earned his master's degree in Agronomy from Kansas State University (Manhattan, Kansas) conducting research that reconstructs plant 3D structures in computer using ordinary cameras and stereo-photogrammetric methodology. He earned his Ph.D. in Agricultural & Biological Engineering from Purdue University (West Lafayette, Indiana) focusing on environmental assessment using holistic



The rock kit is ready (*pictured left*).
E-mail Maps in Schools Chairman
Matthew Chumley at
mchumley@naguss.com
to give a talk with the kit and present
a geologic map to a class
of future geoscientists.

THE PETROLEUM CLUB OF SHREVEPORT

Serving delectable cuisine to the
Shreveport Geological Society
regular luncheon meetings.

318-425-4251

JM JM EXPLORATION
COMPANY, L.L.C.

**Al Jones
David Meadows
Managers**

Mid South Tower Bldg.
416 Travis Street, Suite 1414
Shreveport, LA 71101

Phone: 318-425-7617

Fax: 318-425-1385

Email: jmexploration@comcast.net

BRAMMER
ENGINEERING, INC.

Services:

- Drilling
- Completion
- Construction
- Production
- HSE
- Regulatory
- Land
- Accounting
- Risk

Management

- Information
Systems

www.brammer.com

318.429.2345 o • 318.429.2340 f

400 Texas Street • Suite 600 • Shreveport, LA 71101



WLS
CORPORATION

**OIL & GAS
EXPLORATION & PRODUCTION**

Wayne L. Simpson
President

Philip Davis
Geologist

416 Travis Street, Suite 1006
Shreveport, Louisiana 71101

Office: (318) 425-2978

Fax: (318) 425-3166

mathematical models and geographic information system (GIS).

Xingwen has more than 25 years of experience in geospatial information management in the fields of GIS and environmental assessment. He has led and conducted numerous GIS projects that involve with topographic mapping, enterprise geospatial database design and management, as well as customized GIS applications development such as internet GIS. Xingwen served as the Louisiana State Rep of the South Central Arc User Group (SCAUG) in 2006, 2015-2016. He established the North Louisiana GIS User Group and served as president many times. He is the president of ABCD GIS Mapping that he started in 2010. Dr. Chen is a board member of NARO Louisiana, ArkLaTex Association of Professional Landmen – ALTAPL, and MultiCultural Center of the South.

RSVP by November 9:

Miles McDowell

401 Edwards St., Ste 1601

Shreveport, LA 71101

318-227-8668

milesm@sklarexploration.com

Make checks payable to

Shreveport Geological Society

or

Reserve Online at www.SGS1.org

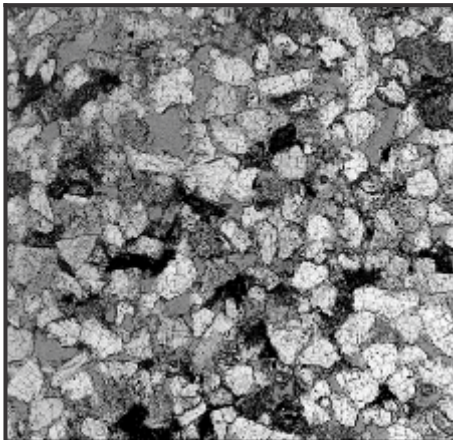
Mark Your Calendar

Ninth Annual Shreveport Geological Society

Geology and Wine Dinner

April 21, 2017

Check SGS1.org for details soon.



Louisiana and ArkLaTex Experts

- ROUTINE AND SPECIAL CORE ANALYSIS
- PVT FLUID EVALUATION
- GEOLOGIC SERVICES

New Orleans: 504-733-6583

Lafayette: 337-837-8818

Houston: 713-328-2673

www.corelab.com



Bobby E. Jelks
President

Faith N. Gilbert
CFO

P. O. Box 7665
Shreveport, LA 71135-7665
Phone: (318) 221-2688

Edward Yarbrough
Exploration Manager

Fax: (318) 459-2935

James Light
Land Manager



GEOVENTURES™

Ashley Garcia

Assistant Program Manager

Main +1 713 789 7250

Direct +1 281 781 1005

Fax +1 713 789 7201

Mobile +1 281 239 4576

ashley.garcia@iongeo.com

2105 City West Blvd., Ste. 900
Houston, TX 77042-2837 USA iongeo.com



L. CHRIS JOHNSON
Manager

2650 Fairfield Ave
Shreveport, LA 71104
BUS: (318) 222-6652
FAX: (318) 222-6673
cjohnson@jerlic.com

GRIGSBY PETROLEUM, INC.

Oil & Gas Exploration
and Production

333 Texas St., Suite 2285
Shreveport, LA 71101
Phone (318) 425-5306
Fax (318) 425-3733

Office Phone
(318) 222-7123

Residence Phone
(318) 925-2348

David L. Billingsley, Jr.
Certified Petroleum Geologist

400 Travis Street, Suite 1230
Shreveport, LA 71101
DLBJR1@aol.com

Cell Phone
(318) 426-4320



Diana L. Chance, Managing Director

P. O. Box 1346 Shreveport, LA 71164
(318) 227-2131 • Fax: (318) 222-5832

Cell: (318) 347-8848

www.donnerproperties.com



LOUISIANA BOARD OF PROFESSIONAL GEOSCIENTISTS

Update on Geoscientist Licensing in Louisiana *from Bill Meaney*

There are 8 applicants sitting for the ASBOG Fundamentals of Geology exam and 6 applicants sitting for the ASBOG Practice of Geology exam on September 30, 2016. The next testing date is March 17, 2017, and the LBOPG deadline for those exams is December 31, 2016. Further information and the Proctoring/Verification Form to apply to take the exams may be found at www.lbopg.org, "Resources" tab, and then scroll down to "ASBOG Proctoring Verification Form".

Ready to track your continuing education hours?

Visit the LBOPG website today to download your continuing education log template

lbopg.org/resources/continuing-education

1	A	B	C	D	E	F	G	H	I	J	K	L
2	Name:			PG License #:		Renewal Date:						
3	Date	Code*	Activity		Instructor	Sponsor Organization		Credits				
4			Title			Name	Location	Time	CEU	PDH		
5												
6												
7												
8												
9												
10												
11												
12												
13												
14												
15												
16												
17												
18												
19												
20												
21												
22												
23												
24												
25												
26												
27												
28												
29												
30												
31												
32												
33												
34												
35												
36												
37												
38												
39												
40												
41												
42												
43												
44												



JON E. SAYE

PETROLEUM GEOLOGIST

Office: 318-221-4504
Fax: 318-221-4516
Cell: 318-458-1515

1015 Mid South Twr. • P. O. Box 137
Shreveport, LA 71161
jsaye@prodigy.net

COUTRET & ASSOC., INC.

Petroleum Reservoir Engineers
Property Evaluation, Reservoir Engineering
Fluid Injection, Property Management

Louisiana Tower
401 Edwards Street
Shreveport, LA 71101

Telephone: (318) 221-0482
Fax: (318) 221-3202
E-mail: rmcgowen@coutret.com



GEOVENTURES™

Alvin Rowbatham
Sales Manager

Main +1 713 789 7250
Direct +1 281 781 1005
Fax +1 713 789 7201
Mobile +1 832 372 2366
alvin.rowbatham@iongeo.com

2105 City West Blvd., Ste. 900
Houston, TX 77042-2837 USA iongeo.com



Delta-T
Geophysical
Consulting, Inc.

Comprehensive Geophysical Services

- Kingdom Suite 2d/3d pak
- Geographix
- GMA
- Neuralog
- Mesa 3-D Design
- Digirule

Woodie Huffman, CEO

401 Edwards Street, Suite 826
Shreveport, LA 71101-5510
Phone: (318) 221-0414
Fax: (318) 425-0688
Email: delta@bellsouth.net

Williamson

OIL & GAS, INC.

Oil & Gas Development



Office: (318) 221-2923 400 Travis Street
Fax: (318) 221-3488 Suite 1410
Email: bob@williamsonogi.com Shreveport, LA 71101

PROFESSIONAL SCOUTING SERVICE

DAVID E. REISER

400 Travis St., Ste. 208 Office: 318-227-0090
Shreveport, LA 71101 Home: 318-393-8844

Cowgill & Associates, L.L.C.

Oil & Gas Exploration & Production

Stephen C. Cowgill
Geologist/Managing Partner

P. O. Box 72180 Office: 318.429.2170
Bossier City, LA 71172-2180 Fax: 318.429.1170
cowgill@suddenlink.net Cell: 318.455.9516

CSC ENERGY CORP.

OIL & GAS EXPLORATION

Joel B. Chevalier
PRESIDENT

401 Edwards Street
Suite 820
Shreveport, Louisiana 71101
Office: (318) 221-5625 • Fax: (318) 459-1650
Mobile: (318) 469-5625

Like what you see? Join us.

Visit SGS1.org now to fill out this form and pay membership dues.

SHREVEPORT GEOLOGICAL SOCIETY, P.O. BOX 750 • SHREVEPORT, LA 71162

APPLICANT OR MEMBER PLEASE TYPE OR PRINT

Date: _____

LAST NAME	FIRST	INITIAL	NICKNAME	
COMPANY		POSITION OR TITLE		
COMPANY MAILING ADDRESS	CITY	STATE	ZIP CODE	COMPANY PHONE
HOME ADDRESS	CITY	STATE	ZIP CODE	HOME PHONE
FAX NUMBER	EMAIL ADDRESS		CELL PHONE	
SCHOOL	DEGREE	MAJOR	YEAR	

PROFESSIONAL AFFILIATIONS

AAPG <input type="checkbox"/>	GSA <input type="checkbox"/>	SEG <input type="checkbox"/>	SEPM <input type="checkbox"/>	AIME <input type="checkbox"/>	SPWLA <input type="checkbox"/>
APGS <input type="checkbox"/>	PS <input type="checkbox"/>	AGU <input type="checkbox"/>	SIPES <input type="checkbox"/>	SPI <input type="checkbox"/>	OTHER _____

SPOUSE'S NAME _____

OUTLINE OF EXPERIENCE _____

PREFERRED MAILING ADDRESS
 HOME BUSINESS

CHECK HERE IF YOU WOULD LIKE THE NEWSLETTER EMAILED

QUALIFICATIONS FROM BY-LAWS

In order to be eligible for active membership, an applicant shall be engaged in the practice or teaching of geology or related sciences.

In order to be an associate member, an applicant shall be interested in geological science but not actively engaged in the practice or teaching of geology or related sciences.

To The Executive Board:

I hereby apply for ACTIVE ASSOCIATE membership in SHREVEPORT GEOLOGICAL SOCIETY and pledge myself to abide by its Constitution and By-laws.

Date: _____ Signature: _____

SPACE BELOW TO BE USED FOR PROCESSING ONLY

Membership Committee

Received _____

Approved for: Active
 Associate
 Student

Executive Board

Approved _____

Secretary

Date

Membership fees are per year:

Active: \$25 Associate: \$25 Student: \$5 Honorary: None

The annual dues cover the period of July through June of the following year.

BER-EX-CO., INC.

Orville Roger Berg, Ph.D.

Exploration, Exploitation
Seismic Evaluation
Domestic, International

400 Travis St., Suite 1612
Shreveport, LA 71101-3108
(318) 220-0300
orberg@bellsouth.net

9949 Beaver Creek Drive
Shreveport, LA 71106
(318) 798-1748

GERARD ASSOCIATES, L.C.

OIL & GAS EXPLORATION
DEVELOPMENT AND ACQUISITIONS

J. A. Wojtkiewicz • Charles Gerard

625 Market St., Suite 250
Shreveport, LA 71101
Tel. (318) 221-0761 • FAX (318) 221-8835

ODEN & ASSOCIATES, LLC

Oil and Gas Exploration



Alan Schlichtemier
Geologist

Email: oden@shreve.net

400 Travis St., Ste. 1301
Shreveport, LA 71101

(318) 222-2400
Fax: (318) 226-0840



Kalmbach
Production Company, LLC

Sam Kalmbach
Geologist

400 Travis Street, Ste. 516
Shreveport, LA 71101

office: (318) 424-6566
cell (318) 470-9977

e-mail: sam.geo.kpc@gmail.com

BARROW-SHAVER RESOURCES COMPANY

Oil & Gas Exploration & Development

Scott Owen Shaver

Managing Partner and Exploration Manager

903-593-5221 Office

903-593-1692 Fax

903-561-4711 Home

903-582-4711 Farm

903-245-4999 Mobile

977 Pruitt Place

Tyler, Texas 75703

sos-bsr@tyler.net



Drilling Contractor

Oil & Gas Operator

Turnkey Services

Well Service & Workover

Working Interest Participant

318-992-4111

P. O. Box 2990, Jena, LA 71342

justissoil.com

SOUTHERN MUDLOGGING, INC.



Mary Ann Norman

Office: (318) 325-3393

1-800-256-2530

P. O. Box 725

West Monroe, LA 71294

Mike Rogers Drilling Co., Inc.

Drilling & Interest Participation

MIKE ROGERS, PRESIDENT

CRAIG ROGERS, VICE PRESIDENT

Office: 870-234-2356 • Fax: 870-234-7487

1708 N. Vine Street • P. O. Box 126 • Magnolia, AR 71754
email: mrdc1981@gmail.com



Craig C. Barclay
Petroleum Geologist, L.L.C.

522 Dumbarton
Shreveport, LA 71106

Phone: (318) 869-2223
Mobile: (318) 426-2536
cbarclay1@comcast.net

NORTHBROOK **ENERGY, LLC**

**Prospects for Sale
Groundfloor Opportunities
East Texas - Louisiana**

PLEASE CONTACT

Michael S. Willey
VP Exploration
903-570-0936
alpine@nctv.com

David Cherry
Managing Partner
214-778-1474
dcherry@petroveninc.com

Joe R. White, Jr.
Petroleum Geologist

8505 Dogwood Trail
Haughton, LA 71037
Cell. 318-423-9828
Hm. 318-949-3539
Available for Consulting

AAPG CPG #5580
MS RPG #0097
LA CPG #345
Jwhite1362@aol.com
Joerjrw@gmail.com

TIM H. MARSHALL DIRCK E. WUELLNER

MARSHALL-WUELLNER, INC.
Petroleum Geologists
AmSouth Tower
333 Texas St., Suite 608
Shreveport, LA 71101-3671
Office: (318) 429-2250
Fax: (318) 429-2251

Wireline Services

Weatherford International, Ltd.
1101 ESE Loop, 323, Ste. 200
Tyler, Texas 75701, USA



Weatherford

Richard 'Dick' Swindell
Technical Sales Advisor
Wireline & Borehole Seismic

Direct: +1.903.594.4926
Main: +1.903.534.5243
Fax: +1.903.939.8907
Mobile: +1.903.530.4016
richard.swindell@weatherford.com
www.weatherford.com

T. W. McGuire & Associates, Inc.

Registered Petroleum Engineers

416 Travis St., Suite 1400
P. O. Box 1763
Shreveport, LA 71166
(318) 222-0761
(318) 222-0799 Fax

James T. Maranto Robert T. Maranto



Jerry W. Taylor
Consulting Geologist, LLC

17377 LAUREN DRIVE
PRAIRIEVILLE, LA 70769

1-(225)-287-8342

JWTGEOLOGY@GMAIL.COM

WWW.JWTGEOLOGY.COM

CAPLIS FORESTRY, LLC
JEFFREY W. CAPLIS
-CONSULTING FORESTER-

CELL: 318-617-9016
OFFICE: 318-752-3662
586 CAPLIS SLIGO RD.
BOSSIER CITY, LA 71112

-complete forestry services-

- Timber Appraisals • Timber Management • Timber Cruising •
- Damage Appraisals • Tree Planting •

B.S. LOUISIANA TECH: SCHOOL OF FORESTRY



416 TRAVIS STREET ♦ SUITE 600
SHREVEPORT, LA 71101
PHONE ♦ (318) 425-0101
FAX ♦ (318) 425-2211

MORRIS NICHOLS
GARY ABRAMS
JOHN STROUD
GEOLOGISTS

SHREVEPORT GEOLOGICAL SOCIETY

Committees and Chairmanships

2016 - 2017

Advertising	Kurt Ley	Kingwood Exploration, LLC	918-7182
Budget	Zach Kelly	Milestone Energy	212-0470
Continuing Education	Miles McDowell	Sklar Exploration	227-8668
Employment	Zach McDonald	Milestone Energy	212-0470
Entertainment	John Hansen	Hansen Oil Corp	861-2269
Environmental	David Williamson	ATC Group Services, LLC	868-4848
Faithful Friends	Zach McDonald	Milestone Energy	212-0470
Field Trip	David Williamson	ATC Group Services, LLC	868-4848
5K Run	Mark Dunham	Sugar Creek Producing Co.	221-2899
Golf Tournament	Zach McDonald,	Milestone Energy	212-0470
	Chairman		
	John Stroud	Stroud Exploration Co., LLC	425-0101
Government Affairs	Scott Stroud	Stroud Exploration Co., LLC	425-0101
Historical	Ralph Richardson	Sartor-Richardson	869-4100
Honorary Membership/ Awards	David Billingsley, Jr.	Independent	222-7123
Investments	Zach Kelly	Milestone Energy	212-0470
Library	Ralph Richardson	Sartor-Richardson	869-4100
Maps in Schools	Matthew C. Chumley	Nadel and Gussman	222-0908
Membership	Mark Dunham	Sugar Creek Producing Co.	221-2899
Membership Directory	Mark Dunham	Sugar Creek Producing Co.	221-2899
Program	Scott Comegys	O' Brien Energy Co.	865-8568
Publications	Demetra Morgan	Shreveport Petroleum Data , Inc.	429-2237
Revel Mock Dig	Carrie Salinas	Virtus Environmental	518-1622
	Co-Chair Needed	Please Call Carrie Salinas	
Scholarship Endowment	Alan Schlichtemier	Oden & Associates, LLC	222-2400
Scholarship Grants	Alan Schlichtemier	Oden & Associates, LLC	222-2400
Sci-Port Discovery	Glen Kelly	TDX Energy LLC	222-0026
Tennis Tournament	Anthony Spano	Spanoil Exploration, Inc.	221-2371
Website - Newsletter Editor	Rachel Hill	Hill Geophysical Consulting	221-3329
Youth Activities	Larry Frizzell	TMR Exploration, Inc.	746-3616
AAPG Delegate			
(7/1/13-6/30/16)			
Executive Assistant	Roger Berg	BER-EX-CO., Inc.	220-0300
SGS Auxiliary President	Demetra Morgan	Shreveport Petroleum Data, Inc.	429-2237
	Susan Schroeder		869-2401

HONORARY MEMBERS

James D. Aimer [†]	William E. Hayes [†]	W. W. Lincoln [†]	C. Ray Scurlock
William E. Bancroft [†]	Roy T. Hazzard [†]	William R. Meaney	Walter H. Spears [†]
Michael W. Beckman [†]	Dr. Leo Hermann [†]	Clarence L. Moody [†]	William C. Spooner [†]
B. W. Blanpied [†]	Charles J. Hoke [†]	John T. Palmer	George D. Thomas [†]
Prentis L. Boatner, Jr.	Perry G. Holloway [†]	Thomas H. Philpott [†]	Arthur H. Trowbridge
John Franks [†]	Walter E. Hopper [†]	William M. Plaster [†]	Henry J. Tyler [†]
Victor P. Grage [†]	E. B. Hutson [†]	Gene R. Robinson [†]	Claude N. Valerius [†]
John C. Grunau [†]	L. Lee Kincade [†]	C. Lane Sartor [†]	Warren B. Weeks [†]
J. Frank Harrell [†]	Joseph O. Laird [†]	Erwin W. Saye [†]	Percy J. Wheeler, Jr.
James B. Harris [†]	Paul Todd Landes, Jr. [†]	Fred R. Schroeder [†]	B. Ross White [†]
			R. M. Wilson [†]

(† deceased)

Shreveport Geological Society

P. O. Box 750 • Shreveport, LA 71162

PRSRT STD
U.S. POSTAGE

PAID

SHREVEPORT, LA
PERMIT NO. 719