



# Shreveport Geological Society **NEWSLETTER**

Volume 57, No. 2

October 2017

If you have not  
renewed your  
membership, this is  
your last newsletter.



SGS1.ORG

**Petroleum Geomechanics p. 9**  
**From the Archives Puzzle p. 15**



*I*t has been an eventful and unfortunate month since I last wrote this column, with two significant hurricanes making landfall and a Category 5 currently bearing down on Puerto Rico. Our thoughts and prayers go out to all of those affected by these storms. I spent a couple of years in Houston in the Southern half of a neighborhood called Briar Grove Park and do not know how my old house came out, but the North side of that neighborhood was pretty much drowned by Buffalo Bayou. I am very thankful that our local area was bypassed and that all we received was a little rain and some cool temperatures. In spite of the magnitude of the damage in Houston, it was good to see communities there come together in their hour of need to help each other where they could, and I think there were many inspiring stories that came out of the deluge. In our small part of this larger drama the SGS and ALTAPL raised more than \$3,000 to assist victims of Harvey during our annual combined golf tournament on September 8. The tournament, held at East Ridge Country Club, was a large success with full participation by golfers and sponsors alike. In the end we had upwards of 200 golfers and \$10,000 in door prizes to give away. After all that we also should have a surplus, which the board has discussed moving into our scholarship program. The totals aren't yet in, but by all accounts the tournament was a great success and I think temperatures were a whopping 80 degrees with plenty of sunshine. Not bad at all!

In a sign of the times of commodities markets, two major hurricanes made landfall on the Gulf Coast and at one point cut off



# **L'RC** **LAFAYETTE** **GEOLOGICAL** **RESEARCH** **CENTER, LLC**

201 Heymann Blvd., Suite 33 • Lafayette, LA 70503  
Tel: 337-233-8197 • Fax: 337-233-8177

## **COVERAGE:**

Louisiana / Federal / State Offshore  
• *Multi State Geo Tech Services • Completion Data  
Production Data • Well Logs • Maps*

~ MEMBERSHIPS AVAILABLE ~

*The Industry's Premier • Well Data Center*

[orders@lafayettegrc.com](mailto:orders@lafayettegrc.com)

CALL OR EMAIL TODAY FOR MORE INFORMATION!

# Faithful Friends 2017-2018

Mary Barrett	Atkins, Ltd., L.L.C.
Carl Gray	BER-EX-CO., Inc.
Scott Caswell	David L. Billingsley, Jr.
Milbird Resources, L.L.C.	Bivins Energy Corporation
Milestone Energy, L.L.C.	Cypress Operating, Inc.
Oden & Associates, L.L.C.	Franks Exploration Company, L.L.C.
Palmer Petroleum, Inc.	Geological Drafting Consultants
Sartor-Richardson, L.L.C.	C.H.C. Gerard and Associates
Jon Saye	Grigsby Petroleum, Inc.
Alan Schlichtemier	Hill Geophysical Consulting
Shaw-Laird, LLC	Lakewood Production, L.L.C.
John D. Silvernail	Marlin Exploration, L.L.C.
Stratagraph, Inc.	T.W. McGuire & Associates, Inc.
Scott Stroud	Weiser-Brown Operating Co.
Joe White, Jr.	Spanoil Exploration, LLC
William Downs	Sugar Creek Producing Company, L.L.C.

To be a Faithful Friend for 2017-2018, please contact Zach Kelly.

## Invest in the Future

You can **donate** to the SGS Scholarship Fund online at [SGS1.org](http://SGS1.org) or by writing a check to the SGS with “Scholarship” in the memo line, and you may include an **“in memory of”** or **“in honor of”** note as well.

Mail to: Shreveport Geological Society,  
P.O Box 750, Shreveport, LA 71162.

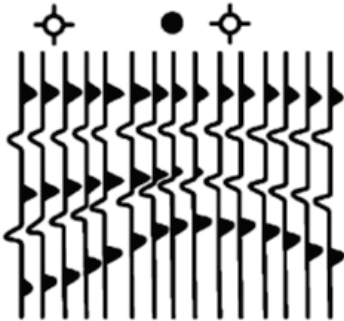
Join our group on

**LinkedIn**

Keep in Touch

through the Shreveport Geological  
Society LinkedIn Group.

# Hill Geophysical Consulting



**Kevin B. Hill**

*Integrating Geophysical Technology  
with Geology*

**What's Under Your  
Feet? Find out:  
HILLGEO.COM**



415 TEXAS ST., SUITE 200  
SHREVEPORT, LA 71101

**318.221.3329**  
**kevin@hillgeo.com**



**Camterra Resources**

**Main Office**

2615 East End Blvd South  
Marshall, TX, 75672  
Telephone: (903) 938-9949  
Fax: (903) 935-0521

**Dallas Office**

100 Crescent Court  
Suite 1800  
Dallas, TX, 75201  
Telephone: (214) 310-0514

[www.camterra.com](http://www.camterra.com)

Chief Executive Officer:	Zach Carlile
President:	Paul Marchand
Exploration Manager:	Daniel Sevier
Director of Operations and Engineering:	Jim Larkin
Land Manager/ General Counsel:	Allen C. Stagers, Jr.
Asst. General Counsel:	Pam Johnson
Sr. Landman:	Steve Copeland
Sr. Landman:	Jason Derebery

---

*Seeking Opportunities in Texas, Louisiana, Arkansas, Mississippi, and New Mexico*

---

25% of offshore production with negligible impact on prices. Three years ago things might have been much different, but here we are. A cold winter would be helpful, but we've been on a mild trend the last couple of years and who knows how that will go. It looks like prices want to continue down the path they're on, and so we will have to just go along for the ride and see where we end up. Steady is better than plummeting! Meanwhile, pipelines and export facilities continue to be developed, offering some hope on the demand side to balance the endless river of hydrocarbons which continue to flow across the US. Meanwhile, after decades of predictions and dire warnings of peak oil, the experts have reconvened to come up with a new theory for the times, and they call it peak demand. So much for originality and so much for the experts.

The annual Red River Revel will be taking place from September 30 through October 7 this year and we will again need volunteers to help with the Mock Dig attraction. The setup should

*Mock Dig*  
*September 30 – October 7*  
<https://sgs1.org/the-mock-dig/>

be back to where it was in prior years and they have lengthened the times, so please check your calendar and see if you can participate. If you can help to set up or close down those are usually harder parts to cover and Carrie Salinas would appreciate you letting her know. We had a signup sheet at the September luncheon and also one is available on the website. I plan on being there and I know kids love getting down and dirty in the pit. Some of them even like the rocks.

Turnout at the first lunch meeting was excellent with close to 65 people in attendance. Unfortunately the club was so booked with competing events that we were put upstairs in the mixed grill, which is not ideal for our style of luncheon. By next month we should be back downstairs and in more comfortable settings for live presentations. By the way, the Petroleum Club is looking good these days due to some updates on the 15th and 16th floors. If you haven't seen them yet, please go by and take a look.

WHEN IT HAS  
TO BE DONE  
FAST!

400 TRAVIS ST.  
SUITE 1606  
S'PORT, LA  
71101



COMPUTER  
MAPPING FOR  
THE OIL & GAS  
INDUSTRY.  
COLOR PLOTTING  
AND DIGITIZING.

JOHN  
HARRELL,  
OWNER  
ANDY  
CARDIN,  
DRAFTSMAN

PHONE

**221-7780**



**skrivanos**  
**engineering, inc.**

In local news, the Sci-Port Discovery Center is about to get some updates of its own. As many of you know, we have donated to the geologic exhibits there in the past and have reached out to the new management team to offer our support should they be interested. They are excited about the project and hope to keep geology as a key attraction going forward. They plan to modify the current setup but will not dispose of anything we have donated in the past. They are planning on expanding the area with more interactive exhibits dedicated to rocks and fossils. Their target age group is ages 4-10, and the museum should reopen in about 18 months. The group taking over is Planet Aqua, who is responsible for the as yet to be opened aquarium, also downtown in the former Barnwell Center. I wish both of these facilities lots of success and think they are good additions to downtown.

The photo directory is still in progress and many of you have submitted photos already, but if not there is still time. We will take photos at the lunch meetings in October and November and you can swing by the SPDA during the week until the 3rd week of November if that is more convenient. Again, we plan to have that out first thing in 2018.

Finally, make sure to come check out next month's speaker from Core Laboratories in Houston, TX. He will be discussing laboratory analysis of rock samples for geomechanics studies which directly aid E&P's in their endeavor to unlock hydrocarbons from their greedy reservoirs.

*Scott Comegys*



The rock kit is ready  
(pictured left).  
E-mail Maps in Schools Chairman  
Matthew Chumley at  
[mchumley@naguss.com](mailto:mchumley@naguss.com)  
to give a talk with the kit and  
present a geologic map to a class  
of future geoscientists.





Jim Hankla  
Sales  
Southern U.S.

115 Jordan Plaza Blvd., Suite 200  
Tyler, Texas 75704  
Mobile: 903-312-8500

Email: james.hankla@bakerhughes.com

[www.bakerhughes.com](http://www.bakerhughes.com)



**Joseph H. McDuff**  
*Geologist*

351 Chapel Loop  
Mandeville, LA 70471

985.845.9430

[jmcduff@bellsouth.net](mailto:jmcduff@bellsouth.net)



## Document Solutions

CONSTRUCTION DOCUMENT & INFORMATION MANAGEMENT SERVICES

MANAGED PRINT SERVICES

ARCHIVING & INFORMATION MANAGEMENT

GRAPHIC DESIGN SERVICES

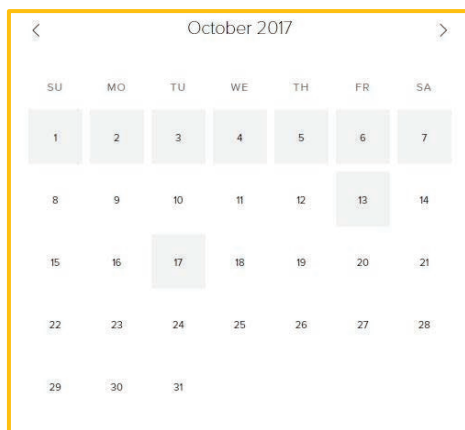
BANNERS, YARD SIGNS, TRUCK MAGNETS, WINDOW DECALS

OVERSIZED SCANS, & COPIES

[shreveport.production@e-arc.com](mailto:shreveport.production@e-arc.com)

305 Market Street, Shreveport, LA 71101 | 318.221.0674 | [www.e-arc.com](http://www.e-arc.com)

# Calendar of Events



View this interactive calendar at [SGS1.org](http://SGS1.org)

## September 30 – October 7

Mock Dig at the Red River Revel  
SGS Members Can Volunteer

## October 13

RSVP for the Monthly Meeting

Call for Abstracts – Power Plays: Drilling into  
Geothermal Energy Applications

## October 17

Monthly Meeting; 11:30 a.m. - 1 p.m.

Petroleum Club 15th Floor

Igor Faoro presents “Hydrocarbon Exploitation:  
the role of Laboratory Geomechanics”

### ***On the Cover:* Fall & Cliff**

***Interior Art:*** Page 1 “Autumn Glow” (*detail*) by Jerry Wray.

Page 11 “Fire and Ice” (*detail*) by Christine Bailey,

courtesy of the Norsworthy Gallery,  
214 Texas St., Shreveport, LA 71101.

Online at [TheNorsworthy.com](http://TheNorsworthy.com).

**Contact the Newsletter Editor:** [1RachelMcNerney@gmail.com](mailto:1RachelMcNerney@gmail.com)



**WILL-DRILL  
RESOURCES  
INCORPORATED**

**PHONE (318) 222-7464**

**FAX (318) 222-7466**

**416 TRAVIS, SUITE 1200  
SHREVEPORT, LA 71101  
OIL AND GAS EXPLORATION**

**Cypress Operating, Inc.**



**STEVEN A. SINGLETARY**

**BEN ROBINSON**

*Petroleum Geologists*

Office: (318) 424-2031

Fax: (318) 425-8140

330 Marshall Street, Suite 930  
Shreveport, LA 71101



**Marlin**

EXPLORATION, L.L.C.

401 Edwards Street, Suite 1200  
Shreveport, LA 71101

P.O. Box 1367  
Shreveport, LA 71164

office: (318) 222-8406

fax: (318) 222-6061

email: mei@marlinexploration.com

**Jon Q=Petersen**  
President

**S. Cody Lenert**  
Geologist

**Autie T. Orjias**  
V.P./Land Manager

**Ryan Q=Petersen**  
Land

**Dean Giles**  
Secretary/Treasurer



**Seismic Exchange, Inc.**

**Strategic Speculative Surveys**

Geophysical Data Marketing & Management

**YOUR**

Full Service  
National  
Seismic Data  
Marketing Firm

Dallas Contacts:

Larry Tull  
Sandi Smith  
Holly Dorward

**DALLAS DENVER HOUSTON NEW ORLEANS  
OKLAHOMA CITY TULSA CORPUS CHRISTI**

9400 N. Central Expressway, Suite 1211  
Dallas, Texas 75231

214-373-1212 FAX 214-373-1208

[www.seismicexchange.com](http://www.seismicexchange.com)

# The October Meeting

*Make your*  
**RESERVATION**

**Igor Faoro**

presents

“Hydrocarbon Exploitation:  
the role of Laboratory Geomechanics”

**11:30 a.m. Tuesday, October 17**

The Petroleum Club of Shreveport, 15<sup>th</sup> floor

Cost: \$20, Children 10 and under \$8

We encourage members to invite guests, spouses, and friends to any of our meetings.

If you'd like a seat, kindly **RSVP**  
by **Friday, October 13** at [SGS1.org](http://SGS1.org),  
or email or call in your reservation to

Lewis Billingsley

[lbillingsley@justissoil.com](mailto:lbillingsley@justissoil.com)

318-992-7763

Name: \_\_\_\_\_

I will bring \_\_\_ guest(s): \_\_\_\_\_



*Great People. Great Plays.  
Since 1908.*

**MID-CONTINENT REGION**

6120 South Yale Ave.- Suite 1300  
Tulsa, Oklahoma 74136-4210  
918-488-7600  
SM-Energy.com

**R. LACY /  
GRAIN ENERGY**

*Oil and Gas Investments  
Exploration and Development*

222 EAST TYLER STREET  
LONGVIEW, TX 75601  
903-758-8276 (O)

**Chris Bresch**  
*V. P. Exploration  
cbresch@rlacy.com*

**Hunter Brumble**  
*Staff Geoscientist  
hbrumble@rlacy.com*

**Scott Caswell**  
*Sr. Geophysicist/Geoscientist  
scaswell@rlacy.com*



Address: 401 Edwards Street, Suite 1601  
Shreveport, Louisiana 71101

Telephone: (318) 227-8668  
Fax: (318) 227-9012



*Operating in the ArkLaTex, MAFla,  
and South Texas Areas*

**MUSLOW  
OIL & GAS, INC.**

330 Marshall Street  
Suite 628  
Shreveport, LA 71101

**Eric Weiss**  
*President*

(318) 221-8694  
Fax: (318) 227-2106

# Igor Faoro



Igor Faoro is the Sr. Geomechanics Consultant for Core Laboratories, based in Houston, and is responsible for providing support and consulting services to the rock mechanics laboratory. His expertise extends to fracture conductivity, hydraulic fracturing, fluid transport properties, static and dynamic physical/mechanical characterization, thermal-hydraulic-mechanical-chemical coupled processes, surface roughness analysis and acoustic emissions. He previously worked as Senior Engineer/Geoscientist at ConocoPhillips Subsurface Laboratories in Bartlesville, OK after a post doctorate at the University of Durham, UK. He has a M.S. in Civil Engineering from Polytechnic University of Turin, Italy; a M.S. and a PHD in Energy and Geo-Environmental Engineering from Pennsylvania State University, University Park, Pennsylvania, USA. *(Read the abstract on p. 13)*

## Presentation Agenda



- ❖ Introduction
  - ✓ Relevance for Petroleum Geomechanics
  - ✓ THMC Coupled Processes
- ❖ Mechanics of Fractures Propagation:
  - ✓ Unconventional Hydrocarbons and Fracturing
  - ✓ Role of In-Situ Stresses, Heterogeneity and Natural Fractures on Hydraulic Fracturing
  - ✓ Crack Propagation
- ❖ Core Laboratories Approach and Innovations
  - ✓ Advanced Sample Acquisition: ASA 200
  - ✓ Subsidence: Casing Shear And Buckling
  - ✓ Drilling Operations: Wellbore Stability: Sand Production
  - ✓ Hydraulic Fracture Stimulation
  - ✓ P&A: Plug and Abandonment Wells Operations
  - ✓ In Development: Micro CT the UCS Test

# HARGROVE SMELLEY & STRICKLAND

A PROFESSIONAL LAW CORPORATION

**Louise F. Pearce**  
*Attorney at Law*

Bus: (318) 429-7200  
Fax: (318) 429-7201  
www.hssl-law.com  
Email: lpearce@hss-law.net

American Tower, Suite 600  
401 Market Street  
Post Office Box 59  
Shreveport, Louisiana 71161-0059

## TMR Exploration, Inc.

Ray Lasseigne, President  
Larry Frizzell, Exploration Manager  
Mack Thomas, Operations Manager  
Terry Antee, Consulting Geologist

P. O. Box 5625  
Bossier City, LA 71171-5625

**(318) 746-3616**

Fax (318) 746-6218

## **SHREVEPORT PETROLEUM DATA ASSOCIATION, INC.**

333 Texas Street, Suite 900  
Shreveport, LA 71101-3678

**(318) 429-2237**  
**FAX (318) 429-2441**

**No Initiation Fee**  
**Cindy Shepherd**  
MANAGER



**Curt Bateman** | *Geophysicist*  
*CurtBateman@InspirationEnergy.net*

**Carl E. Gray** | *Geologist*  
*CarlGray@InspirationEnergy.net*

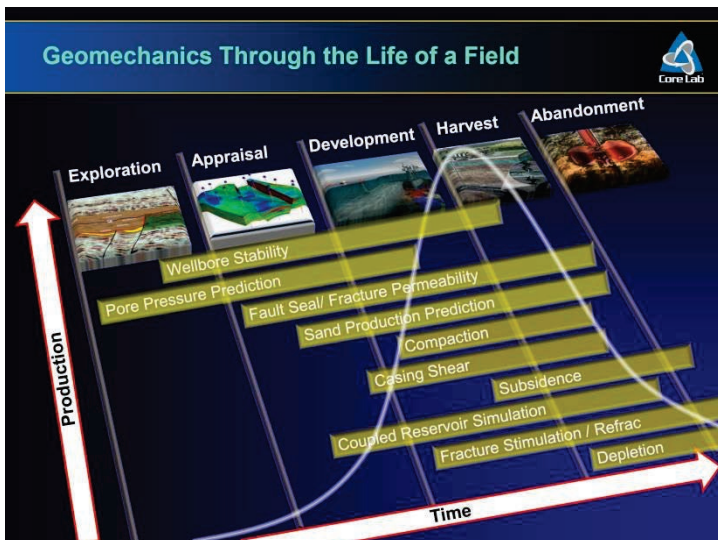
**Sarah Bedgood** | *Secretary/Geotech*

**903-581-5800**

821 ESE Loop 323  
Suite 420  
Tyler, TX 75701

Abstract  
**“Hydrocarbon Exploitation:  
the role of Laboratory Geomechanics”**

*P*etroleum Geomechanics is concerned with rock and fracture behavior in reservoir, drilling, completion and production engineering. In more details, Geomechanics aims to understand how soils and rocks deform to changes of stress, pressure, chemistry and of temperature. During last several decades, intense research has been conducted to better comprehend the processes that link temperature (T), hydrologic flow (H), mechanical deformation (M), and chemical alteration (C) in fractured rock/soils systems. The study is complex because these processes are strongly interconnected as one process affects the initiation and progress of another. In this presentation we will show how THMC couple processes impact the initiation and propagation of hydraulic fracturing in the heterogeneous fractured/porous media. In particular we will focus on the influences that the in situ stresses and the complexity of geological structures have on the fracturing design. Finally, we will describe which laboratory technical innovations are fundamental tools to understanding and to optimizing the practice of fracking.





## ***Baldwin Madden Energy, LLC***

*Oil and Gas Property  
Acquisitions and Development*

***George A. Baldwin, Jr.***

***Gregory K. Madden***

***Christopher D. Franks***  
Senior Geologist

***Lonnie J. Shaw***  
Director of Accounting & Finance

**(318) 429-2220**

**(318) 429-2229 Fax**

333 Texas Street, Suite 1919  
Shreveport, LA 71101-3676

## **Reynolds Drilling Company, Inc.**

7591 Fern Ave., Suite 2001  
Shreveport, Louisiana 71105-5502

Phone: (318) 227-0118

Fax: (318) 227-0171

reydrill@bellsouth.net

**Terry Pat Reynolds**  
*President*

## **STROUD PRODUCTION, LLC**

333 Texas Street, Suite 860

Shreveport, Louisiana 71101-5302

Voice: (318) 429-2260

Fax: (318) 429 2255

Email: ras@spllc.com



## **SPANOIL INCORPORATED**

416 TRAVIS ST., SUITE 806  
SHREVEPORT, LA 71101  
VOICE: (318) 221-2371  
FAX: (318) 221-2372  
anthony@spanoil.com

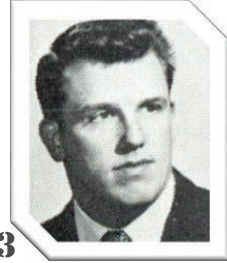
**ANTHONY J. SPANO**  
PRESIDENT

# From the Archives

*By Annie Green*

Allow me to escort you back to the fabulous 1950s with SGS Directory photos of just a few of the society's almost 400 members!

*Can you guess these members? Answers on page 34.*



If you haven't had your portrait made for the 2017-2018 SGS Pictorial Directory, Mrs. Brenda Pender will be available to photograph you at the October/November member meetings or at SPDA during regular business hours.

*Got a question or idea for "From the Archives"?*  
*Email Annie Green at [agreen@naguss.com](mailto:agreen@naguss.com).*



## MILESTONE ENERGY, LLC

Oil & Gas Exploration and Development

**Joseph A. Lott**

Geologist / Managing Partner

**Zach Kelly**  
Geologist

**Zach McDonald**  
Geologist

**Thomas A. Giles**  
Land Manager

333 Texas Street, Suite 516  
Shreveport, Louisiana 71101  
jlott100@bellsouth.net

Office: 318.212.0470  
Fax: 318.212.0469

- Looking for Prospects
- Geophysical Consultant
- Landmark Graphics Corp. Software
- Synthetic Seismograms, modeling and cross sections



- Digitizing capability
- 2-D & 3-D Seismic Acquisition, Processing & Interpretation
- SeisVision 2-D & 3-D interpretation and mapping software

**Bobbye Ben Taylor - President**

O: 120 S Broadway, Suite 102  
Tyler, Texas 75702  
Mobile: (903) 521-3182

H: 7130 Holly Square Court  
Tyler, Texas 75703  
Email: taylor@webfoxmail.com

### **LOOKING FOR PROSPECTS**

*Let me tailor your geophysical needs.*

## HALLIBURTON

Do you require an integrated approach to total well construction, formation evaluation, and optimized production? Make the jump to our team. We have the best local people for designing your well, performing state of the art formation evaluation, and planning and executing your completion.

**Logging & Perforating**  
**Production Enhancement (Stimulation)**  
**Cementing**  
**Security Bits**  
**Tools, Packers, & TCP**  
**Coli Tubing Services**

**Shreveport Sales 318-673-4400**  
**Tyler sales 903-581-5263**  
**Kilgore Operations 1-800-654-6926**



330 Marshall Street  
Suite 1200  
Shreveport, LA  
71101  
(318) 222-0517

# Attention SGS Members:

The Shreveport Geological Society is putting together a photo Membership Directory for the 2018 year. A vast majority of the membership will be pictured in it, so now is your chance to advertise your company or services in the directory with a full page, half page, or quarter page advertisement. It will be several years before another Picture Directory is compiled, so it will really be a bargain to advertise in this directory. The SGS members keep these books on their desks and refer to them often, especially when they can see the members' pictures. So now is your chance to advertise and help your society to cover the costs for this endeavor. Deadline for getting your advertisement in is December 1, 2017. Thank you for your consideration.

*Morris P. Nichols,  
SGS Membership Directory Committee*

Please complete the appropriate information:

Name: \_\_\_\_\_

Address: \_\_\_\_\_

Email Address: \_\_\_\_\_

Advertisements are available in the following sizes (Please check the desired one):

Full Page Ad - \$550 \_\_\_\_\_

Half Page Ad - \$300 \_\_\_\_\_

Quarter Page Ad - \$170 \_\_\_\_\_

\_\_\_\_\_ I would like my ad to appear as in this year's Newsletter.

\_\_\_\_\_ I have enclosed my ad format.

Please return this form along with your payment payable to

Shreveport Geological Society to:

Morris P. Nichols

Attn: SGS Photo Directory

416 Travis Street, Suite 600

Shreveport, LA 71101

**Kingwood Exploration, LLC**  
**Oil & Gas Exploration**  
**and Production**



**Kurt M. Ley**

Exploration Manager & Partner

**Robert E. Braswell**

Engineering/Operations Manager & Partner

416 Travis St., Suite 1100  
Shreveport, LA 71101

Phone: 318-946-8585  
Fax: 318-946-8287

kurt.ley@kingwoodexploration.com  
robert.braswell@kingwoodexploration.com



*Established by G.M. Anderson*

**333 TEXAS ST., SUITE 2020**

**SHREVEPORT, LA 71101-5357**

**Phone: (318) 227-2000**

**Fax: (318) 425-5935**



★ Milam, TX  
★ Many, LA

**The Horizontal Specialists!!**

We work with the greatest companies  
in the world, please give us a call  
to see what we can do for you!!

**Joe Eidson 318-623-5077**

**Michael Danos 318-332-7673**

P. O. Box 1209, Many, LA 71449

**Security Exploration, Inc.**

**8509 Line Avenue**  
**Shreveport, LA 71106**



J. Stafford Comegys  
President

Donna Walker  
Geologist

Barbara Lyles  
Office Manager

**OIL & GAS EXPLORATION**

**Tel: (318) 222-1066**

**Fax: (318) 222-4932**



# LOUISIANA BOARD OF PROFESSIONAL GEOSCIENTISTS

## Update on Geoscientist Licensing in Louisiana Louisiana Board of Professional Geoscientists Launches New Online Payment Portal

On September 1, 2017, LBOPG officially launched its online payment portal, which provides applicants and licensees with a convenient option to pay fees online. The online option allows payment for license applications, Geoscientist-In-Training (GIT) certifications, license renewals, and a variety of other services. A convenience fee of \$5 will be added to each transaction to defray the administrative cost of offering this option. Currently, the portal will accept all major credit cards, including American Express, Discover, MasterCard, and VISA. Read more in the fourth Louisiana Board of Professional Geoscientists (LBOPG) journal, which is now available:

<https://lbopg.worldsecuringsystems.com/resources/Journal4-September2017.pdf>

For additional information contact Brenda Macon at [apply@lbopg.org](mailto:apply@lbopg.org) or 225-505-3766.

HOME ABOUT APPLY FOR LICENSE PAY ONLINE RESOURCES CONTACT BOARD MEMBERS

### LOUISIANA BOARD OF PROFESSIONAL GEOSCIENTISTS

Shopping cart is empty.

LBOPG FEES	
<b>APPLICATION FEES</b>	
Professional Geoscientist (PG) License - Application Fee	\$200.00
Geoscientist-in-Training (GIT) Certificate - Application Fee	\$100.00

# THE PETROLEUM CLUB OF SHREVEPORT

Serving delectable cuisine to the  
Shreveport Geological Society  
regular luncheon meetings.

**318-425-4251**



**JM EXPLORATION  
COMPANY, L.L.C.**

**Al Jones  
David Meadows  
Managers**

Mid South Tower Bldg.  
416 Travis Street, Suite 1414  
Shreveport, LA 71101

Phone: 318-425-7617  
Fax: 318-425-1385  
Email: [jmexploration@comcast.net](mailto:jmexploration@comcast.net)

## **BRAMMER** ENGINEERING, INC.

**Services:**

- Drilling
- Completion
- Construction
- Production
- HSE
- Regulatory
- Land
- Accounting
- Risk

**Management**

- Information  
Systems

[www.brammer.com](http://www.brammer.com)

318.429.2345 o • 318.429.2340 f

400 Texas Street • Suite 600 • Shreveport, LA 71101



## **WLS CORPORATION**

**OIL & GAS  
EXPLORATION & PRODUCTION**

**Wayne L. Simpson  
President**

**Philip Davis  
Geologist**

416 Travis Street, Suite 1006  
Shreveport, Louisiana 71101

Office: (318) 425-2978  
Fax: (318) 425-3166

# Like what you see?

Fill out and mail in this form or find it online at [SGS1.org](http://SGS1.org).

**COMPLETELY FILL OUT THE INFORMATION CARD INCLUDING A VALID E-MAIL ADDRESS  
RETURN IT WITH YOUR DUES PAYMENT BY OCTOBER 31, 2017**

**You can renew online instead  
of filling out this card!**  
★ [www.sgs1.org](http://www.sgs1.org) ★

Active \$25 / yr	
Associate \$25 / yr	
Honorary \$0 / yr	
Student \$5 / yr	
Optional Donation SGS Scholarship Fund	
Optional Donation Faithful Friends	
<b>Total Payment</b>	

NAME (Please Print) \_\_\_\_\_

Check if new applicant or change of address.

**SHREVEPORT GEOLOGICAL SOCIETY, P.O. BOX 750 • SHREVEPORT, LA 71162**

DATE \_\_\_\_\_

APPLICANT OR MEMBER PLEASE TYPE OR PRINT

LAST NAME \_\_\_\_\_ FIRST \_\_\_\_\_ INITIAL \_\_\_\_\_ NICKNAME \_\_\_\_\_

COMPANY \_\_\_\_\_

COMPANY MAILING ADDRESS \_\_\_\_\_ CITY \_\_\_\_\_ STATE \_\_\_\_\_ ZIP \_\_\_\_\_ COMPANY PHONE \_\_\_\_\_

HOME ADDRESS \_\_\_\_\_ CITY \_\_\_\_\_ STATE \_\_\_\_\_ ZIP \_\_\_\_\_ HOME PHONE \_\_\_\_\_

FAX NUMBER \_\_\_\_\_ E-MAIL ADDRESS \_\_\_\_\_ CELL PHONE \_\_\_\_\_

SCHOOL	_____	DEGREE	_____	MAJOR	_____	YEAR	_____
	_____		_____		_____		_____

PROFESSIONAL AFFILIATIONS    AAPG     GSA     SEG     SEPM     AIME     SPWLA   
 APGS     PS     AGI     SIPES     SPE     OTHER \_\_\_\_\_

OUTLINE OF EXPERIENCE \_\_\_\_\_

SPOUSE'S NAME \_\_\_\_\_

**PREFERRED MAILING ADDRESS**  
 HOME     BUSINESS  
 EMAIL ME THE NEWSLETTER  
 (no printed copy will be mailed)

## QUALIFICATIONS FROM BY-LAWS

In order to be eligible for active membership, an applicant shall be engaged in the practice or teaching of geology or related sciences.

In order to be an associate member, an applicant shall be interested in geological science but not actively engaged in the practice or teaching of geology or related sciences.

### TO THE EXECUTIVE BOARD:

I hereby apply for  ACTIVE     ASSOCIATE membership in SHREVEPORT GEOLOGICAL SOCIETY and pledge myself to abide by its Constitution and By-laws.

Date: \_\_\_\_\_ Signature: \_\_\_\_\_

SPACE BELOW TO BE USED FOR PROCESSING ONLY

#### Membership Committee

Received: \_\_\_\_\_

Approved for:     Active  
 Associate  
 Student

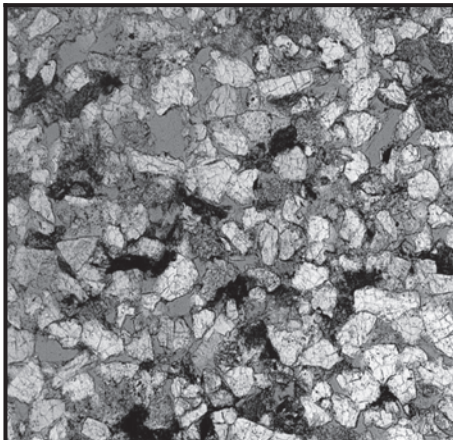
#### Executive Board

Approved: \_\_\_\_\_

SECRETARY

Date: \_\_\_\_\_





### Louisiana and ArkLaTex Experts

- ROUTINE AND SPECIAL CORE ANALYSIS
- PVT FLUID EVALUATION
- GEOLOGIC SERVICES

New Orleans: 504-733-6583

Lafayette: 337-837-8616

Houston: 713-328-2673

[www.corelab.com](http://www.corelab.com)



**Bobby E. Jelks**  
*President*

**Faith N. Gilbert**  
*CFO*

P. O. Box 7665  
Shreveport, LA 71135-7665  
Phone: (318) 221-2688

**Edward Yarborough**  
*Exploration Manager*

Fax: (318) 459-2935

**James Light**  
*Land Manager*



### GEOVENTURES™

**Ashley Garcia**

*Assistant Program Manager*

Main +1 713 789 7250

Direct +1 281 781 1005

Fax +1 713 789 7201

Mobile +1 281 239 4576

[ashley.garcia@iongeo.com](mailto:ashley.garcia@iongeo.com)

2105 City West Blvd., Ste. 900  
Houston, TX 77042-2837 USA [iongeo.com](http://iongeo.com)



**L. CHRIS JOHNSON**  
*Manager*

2650 Fairfield Ave  
Shreveport, LA 71104  
BUS: (318) 222-6652  
FAX: (318) 222-6673  
[cjohnson@jerlic.com](mailto:cjohnson@jerlic.com)

### GRIGSBY PETROLEUM, INC.

Oil & Gas Exploration  
and Production

333 Texas St., Suite 2285  
Shreveport, LA 71101  
Phone (318) 425-5306  
Fax (318) 425-3733

Office Phone  
(318) 222-7123

Residence Phone  
(318) 925-2348

**David L. Billingsley, Jr.**  
Certified Petroleum Geologist

400 Travis Street, Suite 1230  
Shreveport, LA 71101  
[DLBJR1@aol.com](mailto:DLBJR1@aol.com)

Cell Phone  
(318) 426-4320



**Diana L. Chance**, Managing Director

P. O. Box 1346 Shreveport, LA 71164  
(318) 227-2131 • Fax: (318) 222-5832

Cell: (318) 347-8848

[www.donnerproperties.com](http://www.donnerproperties.com)

*Join us in San Antonio!*

*Discover San Antonio's Vibrant Downtown*

**GCAGS-GCSSEPM**

**2017**

**CONVENTION**



**SAN ANTONIO, TEXAS  
NOVEMBER 1-3**

*Hosted by the South Texas Geological Society*

## **ACCOMMODATIONS**

### **Marriott Rivercenter Hotel**

101 Bowie St., San Antonio, TX 78205

(210) 223-1000

Visit [www.gcags2017.org/Accommodations/Accommodations](http://www.gcags2017.org/Accommodations/Accommodations)  
to reserve a discounted room

*Registrants with Marriott Rivercenter reservations will be entered into a raffle to  
win a Kindle E-Reader and dinner for two on the Riverwalk!*

*For more information and sponsorship opportunities visit*

**[www.GCAGS2017.org](http://www.GCAGS2017.org)**



# JON E. SAYE

## PETROLEUM GEOLOGIST

Office: 318-221-4504  
Fax: 318-221-4516  
Cell: 318-458-1515

1015 Mid South Twr. • P. O. Box 137  
Shreveport, LA 71161  
[jsaye@prodigy.net](mailto:jsaye@prodigy.net)

## COUTRET & ASSOC., INC.

**Petroleum Reservoir Engineers**  
Property Evaluation, Reservoir Engineering  
Fluid Injection, Property Management

**Louisiana Tower**  
401 Edwards Street  
Shreveport, LA 71101

**Telephone: (318) 221-0482**  
**Fax: (318) 221-3202**  
**E-mail: [rmcgowen@coutret.com](mailto:rmcgowen@coutret.com)**



**GEOVENTURES™**

**Alvin Rowbatham**  
Sales Manager

Main +1 713 789 7250  
Direct +1 281 781 1005  
Fax +1 713 789 7201  
Mobile +1 832 372 2366  
[alvin.rowbatham@iongeo.com](mailto:alvin.rowbatham@iongeo.com)

2105 City West Blvd., Ste. 900  
Houston, TX 77042-2837 USA [iongeo.com](http://iongeo.com)



**Delta-T**  
**Geophysical**  
**Consulting, Inc.**

**Comprehensive Geophysical Services**

- Kingdom Suite 2d/3d pak
- Geographix
- GMA
- Neuralog
- Mesa 3-D Design
- Digirule

**Woodie Huffman, CEO**

401 Edwards Street, Suite 826  
Shreveport, LA 71101-5510  
Phone: (318) 221-0414  
Fax: (318) 425-0688  
Email: [delta@bellsouth.net](mailto:delta@bellsouth.net)

# Williamson

## OIL & GAS, INC.

### Oil & Gas Development



Office: (318) 221-2923 400 Travis Street  
Fax: (318) 221-3488 Suite 1410  
Email: [bob@williamsonogi.com](mailto:bob@williamsonogi.com) Shreveport, LA 71101

## PROFESSIONAL SCOUTING SERVICE

### DAVID E. REISER

400 Travis St., Ste. 208 Office: 318-227-0090  
Shreveport, LA 71101 Home: 318-393-8844

## Cowgill & Associates, L.L.C.

Oil & Gas Exploration & Production

**Stephen C. Cowgill**  
Geologist/Managing Partner

P. O. Box 72180 Office: 318.429.2170  
Bossier City, LA 71172-2180 Fax: 318.429.1170  
[cowgill@suddenlink.net](mailto:cowgill@suddenlink.net) Cell: 318.455.9516

## CSC ENERGY CORP.

### OIL & GAS EXPLORATION

**Joel B. Chevalier**  
PRESIDENT

401 Edwards Street  
Suite 820  
Shreveport, Louisiana 71101  
Office: (318) 221-5625 • Fax: (318) 459-1650  
Mobile: (318) 469-5625

**GCAGS-GCSSEPM**

**2017**

**CONVENTION**

**SAN ANTONIO, TEXAS**

**November 1-3**

*Hosted by the South Texas Geological Society*

**TECHNICAL SESSIONS**

**Deep Water Symposium**

*Basin Evolution and Drivers of Deep Water Sedimentation  
Reservoir Architecture and Reservoir Quality from Outcrops to  
Producing Fields*

*Innovative Methods and Techniques*

*Petroleum Systems*

**Austin Chalk and Eagle Ford Formations**

*Resource Play Evaluation - Eagle Ford*

*Cretaceous Carbonate Reservoirs: Austin Chalk,*

*Edwards, Buda and Georgetown*

**Gulf Coast Fields and Reservoirs**

*Jurassic Gulf Coast Fields and Reservoirs*

**Water Resources and Gulf Coast Sedimentology**

*Water Resource Protection*

*Gulf Coast Sedimentology*

**Reservoirs and Field Analogs**

*Gulf Coast Fields and Analogs from Other Plays*

**Workflow in Conventional and Unconventional Reservoirs**

*Geophysical, Classification and Management Processes for the  
Geologist*

**See [www.gcags2017.org](http://www.gcags2017.org) for the full schedule  
and titles of oral and poster presentations.**

**REGISTRATION**

\$325 GCAGS/GCSSEPM Professional Early Bird (By Sept. 29)

\$375 Non-Member Professional Early Bird (By Sept. 29)

\$400 GCAGS/GCSSEPM Professional On-Site (After Sept. 29)

\$450 Non-Member Professional On-Site (After Sept. 29)

\$45 Student (Id Required On-Site)

\$45 Student Volunteer (Free Once Approved As Volunteer)

\$80 Spouse / Guest

\$90 Exhibit Hall Pass or Exhibit Booth Worker

\$75 Icebreaker Only

## **BER-EX-CO., INC.**

**Orville Roger Berg, Ph.D.**

Exploration, Exploitation  
Seismic Evaluation  
Domestic, International

400 Travis St., Suite 1612  
Shreveport, LA 71101-3108  
(318) 220-0300  
orberg@bellsouth.net

9949 Beaver Creek Drive  
Shreveport, LA 71106  
(318) 798-1748

## **GERARD ASSOCIATES, L.C.**

OIL & GAS EXPLORATION  
DEVELOPMENT AND ACQUISITIONS

**J. A. Wojtkiewicz • Charles Gerard**

625 Market St., Suite 250  
Shreveport, LA 71101  
Tel. (318) 221-0761 • FAX (318) 221-8835

## **ODEN & ASSOCIATES, LLC**

Oil and Gas Exploration



**Alan Schlichtemier**  
**Geologist**

Email: oden@shreve.net

400 Travis St., Ste. 1301  
Shreveport, LA 71101

(318) 222-2400  
Fax: (318) 226-0840



**Kalmbach**  
**Production Company, LLC**

**Sam Kalmbach**  
**Geologist**

400 Travis Street, Ste. 516  
Shreveport, LA 71101

office: (318) 424-6566  
cell (318) 470-9977

e-mail: sam.geo.kpc@gmail.com

## **BARROW-SHAVER RESOURCES COMPANY**

Oil & Gas Exploration & Development

**Scott Owen Shaver**

Managing Partner and Exploration Manager

903-593-5221 Office

903-593-1692 Fax

903-561-4711 Home

903-582-4711 Farm

903-245-4999 Mobile

977 Pruitt Place

Tyler, Texas 75703

sos-bsr@tyler.net



Drilling Contractor

Oil & Gas Operator

Turnkey Services

Well Service & Workover

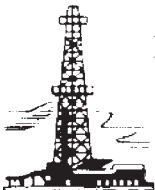
Working Interest Participant

**318-992-4111**

**P. O. Box 2990, Jena, LA 71342**

**justissoil.com**

## **SOUTHERN MUDLOGGING, INC.**



**Mary Ann Norman**

Office: (318) 325-3393

1-800-256-2530

P. O. Box 725

West Monroe, LA 71294

## **Mike Rogers Drilling Co., Inc.**

Drilling & Interest Participation

**MIKE ROGERS, PRESIDENT**

**CRAIG ROGERS, VICE PRESIDENT**

Office: 870-234-2356 • Fax: 870-234-7487

1708 N. Vine Street • P. O. Box 126 • Magnolia, AR 71754  
email: mrdc1981@gmail.com

**GCAGS-GCSSEPM  
2017  
CONVENTION  
SAN ANTONIO, TEXAS**

November 1-3

*Hosted by the South Texas Geological Society*

**SHORT COURSES**

**3D Seismic Attributes for Prospect Identification  
and Reservoir Characterization**

In this 2-day short course, you will gain an intuitive understanding of the kinds of seismic features that can be identified by 3D seismic attributes, the sensitivity of seismic attributes to seismic acquisition and processing, and how 'independent' seismic attributes can be coupled through geology. Instructor Kurt Marfurt: Tues.-Wed., Oct. 31-Nov. 1

**Integrated Exploration Methods for Clastic Depositional Systems**

This 2-day course is designed to provide participants with a modern appreciation of the full spectrum of deep-water depositional systems and their petroleum reservoirs in the context of oil and gas exploration and appraisal. The course examines sediment transport and deposition, stratigraphic architecture, and predictive reservoir characteristics in a variety of basins using hands-on lectures, core-log-seismic exercises, and collaborative discussions.

Instructor Jon Rotzien: Tues.-Wed., Oct. 31-Nov. 1

**Log Analysis for Unconventional Reservoirs**

This is a 1-day short course on log analysis of unconventional reservoirs. It will cover basic characteristics and mineralogy of unconventional reservoirs; estimation of Total Organic Carbon (TOC wt.%) from well logs; log analysis of organic rich, gas-bearing and oil-bearing mudstones using both conventional logs and newer advanced logging technologies including geomechanical properties, NMR and dielectric logs. Instructor George Asquith: Wed., Nov. 1

**Introduction to Seismic Interpretation: STUDENTS ONLY**

This is a 2-day short course that introduces participants to seismic interpretation as applied in the petroleum industry. Lectures, hands-on exercises and discussions focus on the tools and concepts used by interpreters to derive structural and stratigraphic information from 2D and 3D seismic data. Topics include the principles of the seismic method, data acquisition and processing, interpretation tools and workflows, and how all of these factors affect structural and stratigraphic interpretations. Instructors Carl Fiduk & Bruce Hart: Sat.-Sun., Nov. 4-5



*Craig C. Barclay*  
Petroleum Geologist, L.L.C.

522 Dumbarton  
Shreveport, LA 71106

Phone: (318) 869-2223  
Mobile: (318) 426-2536  
cbarclay1@comcast.net

## **NORTHBROOK** **ENERGY, LLC**

**Prospects for Sale  
Groundfloor Opportunities  
East Texas - Louisiana**

**PLEASE CONTACT**

**Michael S. Willey**  
VP Exploration  
903-570-0936  
alpine@nctv.com

**David Cherry**  
Managing Partner  
214-778-1474  
dcherry@petroveninc.com

**Joe R. White, Jr.**  
Petroleum Geologist

8505 Dogwood Trail  
Haughton, LA 71037  
Cell. 318-423-9828  
Hm. 318-949-3539  
Available for Consulting

AAPG CPG #5580  
MS RPG #0097  
LA CPG #345  
Jwhite1362@aol.com  
Joerjrw@gmail.com

**TIM H. MARSHALL DIRCK E. WUELLNER**

**MARSHALL-WUELLNER, INC.**  
**Petroleum Geologists**  
AmSouth Tower  
333 Texas St., Suite 608  
Shreveport, LA 71101-3671  
Office: (318) 429-2250  
Fax: (318) 429-2251

### **Wireline Services**

Weatherford International, Ltd.  
1101 ESE Loop, 323, Ste. 200  
Tyler, Texas 75701, USA



## **Weatherford**

**Richard 'Dick' Swindell**  
Technical Sales Advisor  
Wireline & Borehole Seismic

Direct: +1.903.594.4926  
Main: +1.903.534.5243  
Fax: +1.903.939.8907  
Mobile: +1.903.530.4016  
richard.swindell@weatherford.com  
www.weatherford.com

## **T. W. McGuire & Associates, Inc.**

**Registered Petroleum Engineers**

416 Travis St., Suite 1400  
P. O. Box 1763  
Shreveport, LA 71166  
(318) 222-0761  
(318) 222-0799 Fax

**James T. Maranto Robert T. Maranto**



**Jerry W. Taylor**  
Consulting Geologist, LLC

17377 LAUREN DRIVE  
PRAIRIEVILLE, LA 70769

1-(225)-287-8342

JWTGEOLOGY@GMAIL.COM

WWW.JWTGEOLOGY.COM

## **GCAGS-GCSSEPM**

**2017**

### **CONVENTION**

**SAN ANTONIO, TEXAS**

**November 1-3**

*Hosted by the South Texas Geological Society*

#### **SHORT COURSES (continued)**

##### **Ethics for Geologists (Includes Breakfast)**

This is a 1-hour collaborative/interactive lecture to satisfy the Texas Board of Professional Geoscientists ethics credit requirement. Participants must bring a text capable phone to interactively participate in the lecture. Instructor John Jordan: Fri., Nov. 3

##### **A Recruiter's Insights to Resumes and Interviews**

This is a 1/2-day short course for students and professional geoscientists looking for a job in the petroleum industry. The course covers choosing a major to a graduate school, identifying job opportunities of interest, writing a resume, and interviewing. Topics include, what should and shouldn't be in your resume, what to do and what not to do in an interview from a straightforward practical perspective, and provides attendees with several insights to what employers and recruiters are looking for. Although the course is designed for folks looking towards a geoscience career in industry, simple pointers that anyone can use for nearly any job are offered.

Instructor David Weinburg: Fri., Nov. 3

#### **SPECIAL EVENTS**

South Texas Geological Society Golf Tournament

Wed., Nov. 1

All Convention Luncheon: Speaker, Dr. William Fisher

Thurs., Nov. 2

Geo-Oktoberfest at Beethoven Maennerchor und Garten

Thurs., Nov. 2

Women in Geosciences Breakfast: Speaker, Kimberly Corley

Fri., Nov. 3

GCSSEPM Luncheon: Speaker, Dr. Maria Mutti

Fri., Nov. 3

AAPG DPA Luncheon: Speaker, Dr. Thomas Ewing

Fri., Nov. 3

Two Spouse and Guest Tours of San Antonio

Thurs., Nov. 2 & Fri., Nov. 3

Convention Icebreaker

Wed., Nov. 1



**CAPLIS FORESTRY, LLC**  
**JEFFREY W. CAPLIS**  
-CONSULTING FORESTER-

CELL: 318-617-9016  
OFFICE: 318-752-3662  
586 CAPLIS SLIGO RD.  
BOSSIER CITY, LA 71112

*-complete forestry services-*

- Timber Appraisals • Timber Management • Timber Cruising •
- Damage Appraisals • Tree Planting •

**B.S. LOUISIANA TECH: SCHOOL OF FORESTRY**



416 TRAVIS STREET ♦ SUITE 600  
SHREVEPORT, LA 71101  
PHONE ♦ (318) 425-0101  
FAX ♦ (318) 425-2211

MORRIS NICHOLS  
GARY ABRAMS  
JOHN STROUD  
GEOLOGISTS



GeoGraphix®

[www.lmkr.com](http://www.lmkr.com)



**Mark Mixon**  
Account Manager

[mmixon@lmkr.com](mailto:mmixon@lmkr.com)  
P: +1 281 495 5657  
D: +1 281 848 3310  
C: +1 713 419 8918  
F: +1 281 879 0135

LMK Resources Inc.  
6051 North Course Drive, Suite 300,  
Houston, TX 77072, USA

**GCAGS-GCSSEPM  
2017  
CONVENTION  
SAN ANTONIO, TEXAS**

**November 1-3**

*Hosted by the South Texas Geological Society*

**FIELD TRIPS**

**Canyon Lake Gorge: Cretaceous Glen Rose  
(Wed., Nov. 1)**

The "Canyon Lake Gorge" Field Trip will provide access to excellent exposures of the Cretaceous Glen Rose Formation at the recently (2002) exposed area below the Spillway at Canyon Lake. It will feature the Stratigraphic, Structural, and Aquifer Characteristics of this exposure.

Trip Leader: Lyle Baie, David Ferrill & Tom Fett

**Upper Cretaceous Sands of the Eagle Pass Area  
(Fri.-Sat., Nov. 3 & 4)**

The "Upper Cretaceous Sands of the Eagle Pass Area" Field Trip will provide a detailed look at the Upper Cretaceous Sands, including the Escondido, Olmos and San Miguel. Along the way we will look at the Austin Chalk and the Anacacho Lime, as well as Igneous ("Serpentine") Intrusions in the area.

Trip Leader: Dr. Thomas Ewing & Tom Fett

**Austin Chalk and Eagle Ford Shale in San Antonio  
(Sat., Nov. 4)**

The "Austin Chalk and Eagle Ford Shale in San Antonio" Field Trip will provide a good look at the full Austin Chalk section in the San Antonio area, with several newly examined outcrops. It will include nicely exposed underlying Austin Chalk contacts with the Eagle Ford Shale and an overlying contact with the Taylor Formation. The trip will see nearly 500' of beautifully exposed, easily accessible Buda Lime / Eagle Ford Shale / Austin Chalk.

Trip Leader: John Cooper

For further information: Contact Tom Fett at  
MedinaLake@msn.com or at 210 289-7128.

**Visit  
[GCAGS2017.org](http://GCAGS2017.org)  
for more information and to register!**

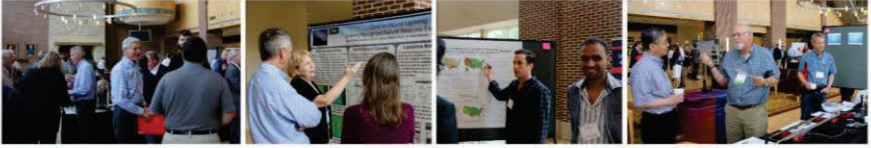
# POWER PLAYS™

## DRILLING INTO GEOTHERMAL ENERGY APPLICATIONS

#SMUPowerPlays

January 10-11, 2018

SMU Campus, Dallas, TX



### Conference

**Power Plays: Drilling into Geothermal Energy Applications**  
Southern Methodist University campus, Dallas, Texas  
January 10-11, 2018

Power Plays will advance the understanding of geothermal resources, providing you with insights into developing this clean energy reserve. Join others with expertise in field operations, project development, technology, finance, engineering and resource assessment from the geothermal, oil & gas, and renewable energy sectors to explore economic solutions for geothermal energy at the 2018 SMU Power Plays conference.

### Call for Abstracts

You are invited to submit an abstract for a poster or oral presentation at the 2018 SMU Power Plays conference. Abstracts are due by **Friday October 13, 2017**. Topics include:

- Reservoirs: exploration, enhancement and productivity
- Drilling and Downhole Advancements: oil & gas laterals, geothermal hydroshearing
- Engineering Techniques: heat extraction, technology
- Novel Applications: deep direct use for utilities or buildings, micro to macro generation
- Case Studies and Planned Project Discussions: approaches, challenges, solutions

### Event Details

**Name:** Power Plays: Drilling into Geothermal Energy Applications  
**Date:** Networking Reception and Poster Session January 10; Conference January 11, 2018  
**Location:** SMU Campus, Dallas, Texas  
**Website:** <http://www.smu.edu/Dedman/Academics/Programs/GeothermalLab/Conference>  
**Social Media:** [Twitter](#) | [Facebook](#) | #SMUPowerPlays  
**Contact:** Maria Richards, [mrichard@smu.edu](mailto:mrichard@smu.edu), 214-768-1975

Please share this information with others you know who may be interested. We look forward to learning about your research, demonstration project, or innovative idea!



SMU | GEOTHERMAL  
LABORATORY



### Answers to the “From the Archives” puzzle on page 17:

- |                              |                            |                      |
|------------------------------|----------------------------|----------------------|
| 1. Arthur H. Trowbridge      | 4. Harland B. Hundley      | 7. Joseph O. Laird   |
| 2. C. Lane Sartor            | 5. John Franks             | 8. Richard H. Forgey |
| 3. David L. Billingsley, Sr. | 6. Prentis L. Boatner, Jr. | 9. John T. Palmer    |

# ENERGY!



**Ready for another round.**

**September 30 – October 3, 2018**

**[GCAGS2018.ORG](http://GCAGS2018.ORG)**

The Call for Papers has been issued.

Corporate sponsorship opportunities are available.

The 2018 GCAGS-GCSSEPM Convention Logo's background image is used with permission of the Shreveport Geological Society.



## SHREVEPORT GEOLOGICAL SOCIETY

### Committees and Chairmanships

2017 - 2018

Advertising	Kurt Ley	Kingwood Exploration, LLC	918-7182
Budget	Qiu Lu	O'Brien Energy Co	865-8568
Continuing Education	Miles McDowell	Sklar Exploration	227-8668
Employment	Cody Lenert	Marlin Exploration	222-8406
Entertainment	John Hansen	Hansen Oil Corp	861-2269
Environmental	David Williamson	ATC Group Services, LLC	868-4848
Faithful Friends	Zach Kelly	Milestone Energy	212-0470
Field Trip			
5K Run	Mark Dunham	Sugar Creek Producing Co.	221-2899
Golf Tournament	Scott Comegys	O'Brien Energy Co	865-8568
	Cody Lenert	Marlin Exploration	222-8406
Government Affairs	Scott Stroud	Stroud Exploration Co., LLC	425-0101
Historical	Ralph Richardson	Sartor-Richardson	869-4100
Honorary Membership/ Awards	David Billingsley, Jr.	Independent	222-7123
Investments	Qiu Lu	O'Brien Energy Co	865-8568
Library	Ralph Richardson	Sartor-Richardson	869-4100
Maps in Schools	Matthew C. Chumley	Nadel and Gussman	222-0908
Membership	David Williamson	ATC Group Services LLC	868-4848
Membership Directory Program	Morris P. Nichols	Stroud Exploration, Co., LLC	425-0101
Publications	Lewis Billingsley	Justiss Oil	992-7763
Revel Mock Dig	Annie Green	Nadel and Gussman Ruston	222-0908
	Carrie Salinas	Virtus Environmental	518-1622
Scholarship Endowment	Alan Schlichtemier	Oden & Associates, LLC	222-2400
Scholarship Grants	Alan Schlichtemier	Oden & Associates, LLC	222-2400
Sci-Port Discovery	Zach Kelly	Milestone Energy	222-0026
Tennis Tournament	Anthony Spano	Spanoil Exploration, Inc.	221-2371
Website - Newsletter Editor	Rachel McNerney	Hill Geophysical Consulting	221-3329
Youth Activities	Larry Frizzell	TMR Exploration, Inc.	746-3616
<b>AAPG Delegate</b> <b>(7/1/16-6/30/19)</b>			
Executive Assistant	Mark Dunham	Sugar Creek Producing Co.	221-2899
SGS Auxiliary President	Annie Green	Nadel and Gussman Ruston	222-0908
	Susan Schroeder		869-2401

### HONORARY MEMBERS

James D. Aimer <sup>†</sup>	James B. Harris <sup>†</sup>	Paul Todd Landes, Jr. <sup>†</sup>	C. Ray Scurlock
William E. Bancroft <sup>†</sup>	William E. Hayes <sup>†</sup>	W. W. Lincoln <sup>†</sup>	Walter H. Spears <sup>†</sup>
Michael W. Beckman <sup>†</sup>	Roy T. Hazzard <sup>†</sup>	William R. Meaney	William C. Spooner <sup>†</sup>
Orville Roger Berg	Dr. Leo Hermann <sup>†</sup>	Clarence L. Moody <sup>†</sup>	George D. Thomas <sup>†</sup>
B. W. Blanpied <sup>†</sup>	Kevin Hill	John T. Palmer	Arthur H. Trowbridge
Prentis L. Boatner, Jr.	Charles J. Hoke <sup>†</sup>	Thomas H. Philpott <sup>†</sup>	Henry J. Tyler <sup>†</sup>
Alan L. Brittain	Perry G. Holloway <sup>†</sup>	William M. Plaster <sup>†</sup>	Claude N. Valerius <sup>†</sup>
John Franks <sup>†</sup>	Walter E. Hopper <sup>†</sup>	Gene R. Robinson <sup>†</sup>	Warren B. Weeks <sup>†</sup>
Victor P. Grage <sup>†</sup>	E. B. Hutson <sup>†</sup>	C. Lane Sartor <sup>†</sup>	Percy J. Wheeler, Jr.
John C. Grunau <sup>†</sup>	L. Lee Kincade <sup>†</sup>	Erwin W. Saye <sup>†</sup>	B. Ross White <sup>†</sup>
J. Frank Harrell <sup>†</sup>	Joseph O. Laird <sup>†</sup>	Fred R. Schroeder <sup>†</sup>	R. M. Wilson <sup>†</sup>

(<sup>†</sup> deceased)

**Shreveport Geological Society**

P.O. Box 750 • Shreveport, LA 71162