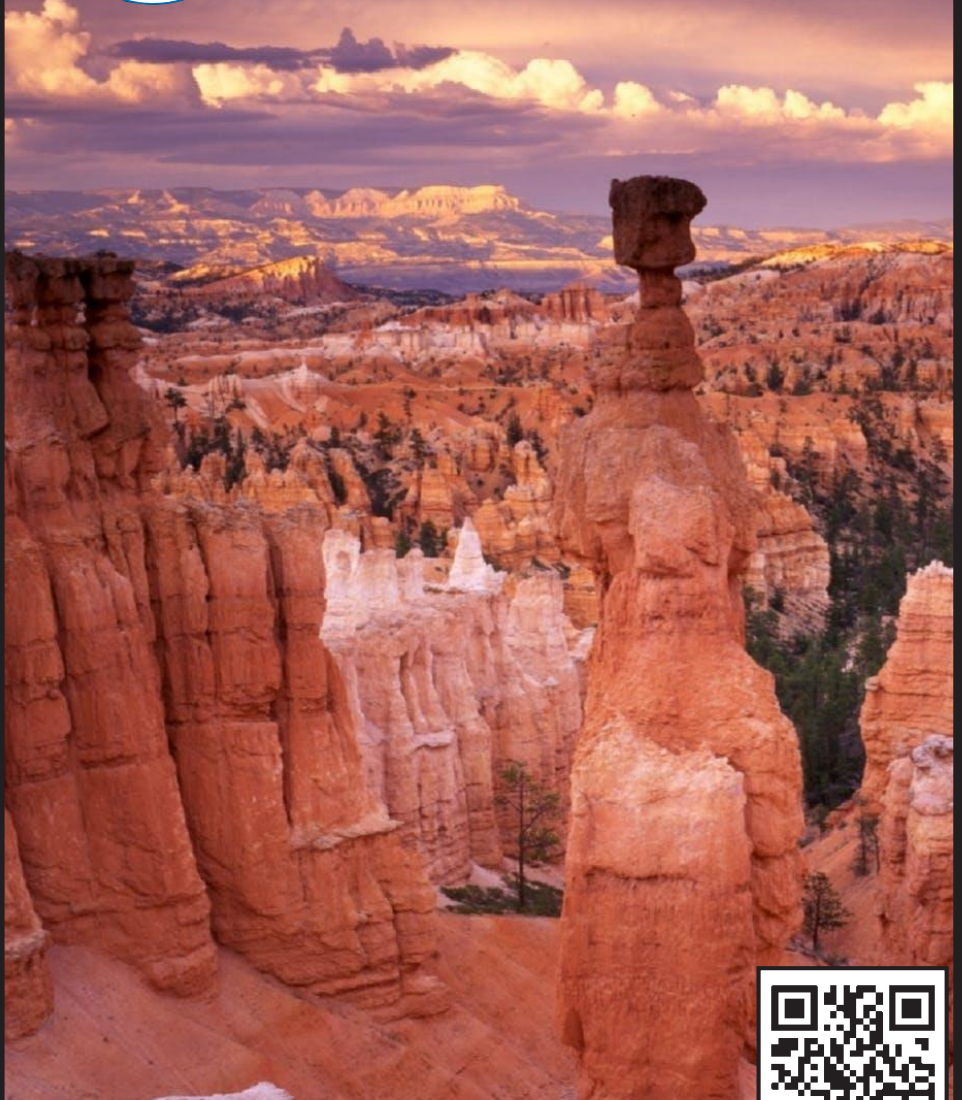




Shreveport Geological Society **NEWSLETTER**

Volume 59, No. 2

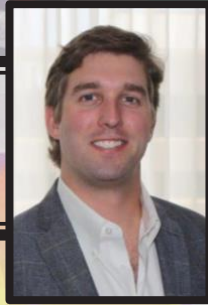
October 2018



Reservoir Fluid PVT Analysis p. 7
Recent LA & TX Permits p. 23

SGS1.ORG

*Message
from*



*the
President*

***B**y* the time this newsletter arrives, we will have all attended the GCAGS-GCSSEPM Annual Convention in Shreveport. As it is still imminent, I can't yet comment on how the convention went but I fully expect it will be wonderful. I'm proud to see our members working so hard to make this convention all it can be and would like to extend a special thanks to Alan Brittain and Ralph Richardson for their tireless efforts raising funds and organizing this event.

At the September meeting, we enjoyed an engaging talk by Ray Leonard on "Climate Change, the Challenge for the Oil and Gas Industry and Geopolitical Implications". Ray was well versed and raised some interesting points. After stopping in Shreveport, he headed to Vienna to give the same presentation to OPEC. If you missed it, I definitely recommend looking through his slides on the SGS website.

This week, oil prices hit a four year high with Brent Crude rising to \$82 per bbl and WTI to over \$72. President Donald Trump called upon OPEC to add more supply to the market in order to lower the current price which he feels is too high. An Iranian official was quoted, saying "I am telling him, keep quiet, do not do any tweets, and then you will be better off in the prices." To that, I say, well played Iran. If this is indeed the master key to controlling crude pricing, I am confident we will enjoy high oil prices through at least 2020.

Jokes aside, oil prices that climb above a certain threshold are not always beneficial for the industry at large. This threshold is of course on a sliding scale and as history shows, we have crossed it many times in the past and will certainly cross it many more times in

the future. Oil and gas prices are essentially an irregular sawtooth fluctuation about this threshold; where the downslopes are always much steeper than the up-slopes. Growing up in an oil and gas family, I learned the basic premise of commodity markets at a very young age which is, “High prices cure high prices and low prices cure low prices.” High gas prices in the \$5-12 range most certainly played a part in developing the unconventional revolution to unlock tight gas which ultimately led to sustained lower gas prices for the foreseeable future. Though operators have found ways to become profitable at today’s prices with better frac jobs, longer laterals, and lower drilling costs, it took them nearly a decade to do so.

Personally, I would like to see prices hang in the \$70-80 range as this seems to be a happy medium that allows oil companies to continue exploration and make future plans without the consumer being squeezed too badly.

At our next meeting, we will enjoy a talk from Toddy Guidry of Core Lab titled “Intro to Reservoir Fluid PVT Analysis for Earth Scientists”. In this, Toddy will attempt to explain reservoir engineering to us rock guys. Hopefully he will do it more eloquently than we explain stratigraphy to landmen. I look forward to seeing you all at the GCAGS convention and at our next meeting!

*Get an Intro to
Reservoir Fluid
PVT Analysis
at the Meeting
October 12*

Best,

Lewis Billingsley

Faithful Friends 2018-2019

Louise F. Pearce	Atkins, Ltd., L.L.C.
Scott Comegys	BER-EX-CO., Inc.
Alan Schlichtemier	Geological Drafting Consultants
Richard Swindell	C.H.C. Gerard and Associates
Scott Stroud	Grigsby Petroleum, Inc.
Joe White, Jr.	Hill Geophysical Consulting
Qiu Lu	Marlin Exploration, L.L.C.
Greg McCarty, P.G.	Toledo Mudlogging Services, Inc.
Daniel Buller	Milbird Resources, L.L.C.
Wild Oak Gas Co., Inc.	T.W. McGuire & Associates, Inc.
Milestone Energy, L.L.C.	Sugar Creek Producing Company, L.L.C.
Palmer Petroleum, Inc.	JM Exploration Company, Inc.
Sartor-Richardson, L.L.C.	

To be a Faithful Friend for 2018-2019, please contact Qiu Lu.

Invest in the Future

You can **donate** to the SGS Scholarship Fund online at SGS1.org or by writing a check to the SGS with “Scholarship” in the memo line, and you may include an **“in memory of”** or **“in honor of”** note as well.

Mail to: Shreveport Geological Society,
P.O Box 750, Shreveport, LA 71162.

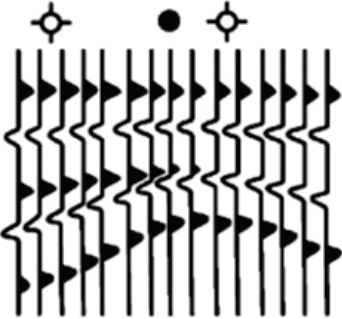
Join our group on

LinkedIn

Keep in Touch

through the Shreveport Geological
Society LinkedIn Group.

Hill Geophysical Consulting



Kevin B. Hill

*Integrating Geophysical Technology
with Geology*

**What's Under Your
Feet? Find out:
HILLGEO.COM**



415 TEXAS ST., SUITE 200
SHREVEPORT, LA 71101

318.221.3329
kevin@hillgeo.com



Camterra Resources

Main Office

2615 East End Blvd South
Marshall, TX, 75672
Telephone: (903) 938-9949
Fax: (903) 935-0521

Dallas Office

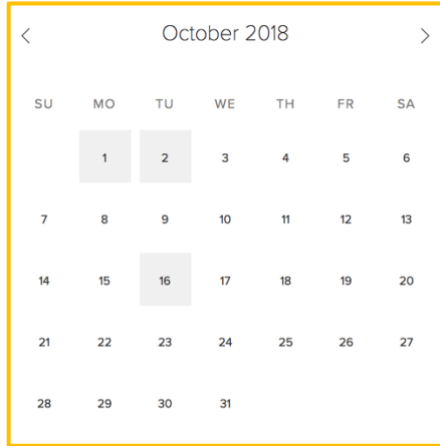
100 Crescent Court
Suite 1800
Dallas, TX, 75201
Telephone: (214) 310-0514

www.camterra.com

Chief Executive Officer:	Zach Carlile
President:	Paul Marchand
Exploration Manager:	Daniel Sevier
Director of Operations and Engineering:	Jim Larkin
Lan Manager/ General Counsel:	Allen C. Staggers, Jr.
Asst. General Counsel:	Pam Johnson
Sr. Landman:	Steve Copeland
Sr. Landman:	Jason Derebery

Seeking Opportunities in Texas, Louisiana, Arkansas, Mississippi, and New Mexico

Calendar of Events



View this interactive calendar at SGS1.org

September 30 – October 2

GCAGS-GCSSEPM Convention in Shreveport

September 29 – October 7

Mock Dig at the Red River Revel

October 12

RSVP for the Monthly Meeting

October 16

Monthly Meeting; 11:30 a.m. - 1 p.m.; Petroleum Club 15th Floor

Toddy Guidry presents

“Intro to Reservoir Fluid PVT Analysis for Earth Scientists”

On the Cover: Bryce Canyon, stock photo. Got a picture you want to see on the cover? Email it to the editor today!

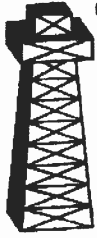
Interior Art: Page 1 “Proximate Cause” (*detail*) by Gwen Norsworthy. Courtesy of the Norsworthy Gallery, 214 Texas St., Shreveport, LA 71101, online at TheNorsworthy.com.

Page 7 “Wheatstacks” (*detail*) by Claude Monet.

Contact the Newsletter Editor: 1RacheIMcNerney@gmail.com

WHEN IT HAS
TO BE DONE
FAST!

400 TRAVIS ST.
SUITE 1606
S'PORT, LA
71101



**GEOLOGICAL
DRAFTING
CONSULTANTS**



COMPUTER
MAPPING FOR
THE OIL & GAS
INDUSTRY.
COLOR PLOTTING
AND DIGITIZING.

JOHN
HARRELL,
OWNER
ANDY
CARDIN,
DRAFTSMAN

PHONE

221-7780



skrivanos
engineering, inc.

The October Meeting

Make your

RESERVATION

Toddy Guidry

presents

“Intro to Reservoir Fluid PVT Analysis
for Earth Scientists”

11:30 a.m. Tuesday, October 16

The Petroleum Club of Shreveport, 15th floor

Cost: \$20, Children 10 and under \$8

We encourage members to invite guests, spouses, and
friends to any of our meetings.

If you'd like a seat, kindly **RSVP**
by **Friday, October 12** at SGS1.org,
or email or call in your reservation to

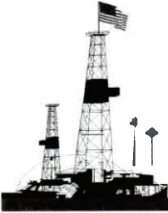
Cody Lenert

clenert@marlinexploration.com

318-222-8406

Name: _____

I will bring ___ guest(s): _____



PALMER PETROLEUM, INC.

Exploration and Development • Operations • Oil and Gas Investments

330 Marshall Street, Suite 1200
Shreveport, Louisiana 71101

Phone: (318) 222-0517

www.palmerpetro.com

Fax: (318) 424-3256



Document Solutions

CONSTRUCTION DOCUMENT & INFORMATION MANAGEMENT SERVICES

MANAGED PRINT SERVICES

ARCHIVING & INFORMATION MANAGEMENT

GRAPHIC DESIGN SERVICES

BANNERS, YARD SIGNS, TRUCK MAGNETS, WINDOW DECALS

OVERSIZED SCANS, & COPIES

shreveport.production@e-arc.com

305 Market Street, Shreveport, LA 71101 | 318.221.0674 | www.e-arc.com

Toddy Guidry



Toddy is currently Sr. Technical Advisor for Core Labs, based in Lafayette La., overseeing technical sales and corporate business development east of Texas. Toddy has a MS in Mathematics from the University of Southwestern

Louisiana, and has been involved in the industry for over 35 years.

He can be reached in Lafayette at 337-837-8616, toddy.guidry@corelab.com.

Abstract

“Intro to Reservoir Fluid PVT Analysis for Earth Scientists”

The need for good, representative reservoir fluid samples is critical to the effective design and operation of any development project. The decision to build and deploy production facilities exposes producers up to several billion dollars of investment risk, and a solid understanding of formation fluids right after discovery plays an essential part in mitigating that risk. Whether obtaining Gulf of Mexico Wireline Formation Test tool samples from 20,000 feet or surface separator samples from Terrebonne Parish La., fluid analysis provides the ammunition needed for more efficient use of assets.

Many times the only exposure that geologists get to fluids is hearing the reservoir engineer “talk” about getting “PVT samples”. This 45 minute presentation will cover the basics of reservoir fluid behavior, sampling and analysis. The “big picture” may include many determining drive mechanisms, formation rock properties, geophysical



**WILL-DRILL
RESOURCES
INCORPORATED**

**PHONE (318) 222-7464
FAX (318) 222-7466**

**416 TRAVIS, SUITE 1200
SHREVEPORT, LA 71101
OIL AND GAS EXPLORATION**

Cypress Operating, Inc.



**STEVEN A. SINGLETARY
BEN ROBINSON**
Petroleum Geologists

Office: (318) 424-2031
Fax: (318) 425-8140

330 Marshall Street, Suite 930
Shreveport, LA 71101



401 Edwards Street, Suite 1200
Shreveport, LA 71101

P.O. Box 1367
Shreveport, LA 71164

office: (318) 222-8406
fax: (318) 222-6061
email: mei@marlinexploration.com

EXPLORATION, L.L.C.

Jon Q=Petersen
President

S. Cody Lenert
Geologist

Autie T. Orjias
V.P./Land Manager

Ryan Q=Petersen
Land

Dean Giles
Secretary/Treasurer



Strategic Speculative Surveys
Geophysical Data Marketing & Management

Your
Full Service
National
Seismic Data
Marketing Firm

Dallas Contacts:
Larry Tull
Sandi Smith
Holly Sumrow

DALLAS DENVER HOUSTON NEW ORLEANS TULSA

12801 N. Central Expressway, Suite 570
Dallas, Texas 75243

214-373-1212 FAX 214-373-1208
www.seismicexchange.com

properties as well as formation fluid properties. Fluids analysis provides data critical to predicting well and reservoir performance, surface and subsea facilities design, and fluid quality assessment for determining market price.

Outline of Topics Covered:

- Introduction to PVT analysis? Why perform it? What data does it provide? Who uses it?
 - Reservoir Engineering 101
 - Phase Behavior and basic fluid properties
- Overview of Sampling Sources
 - Surface vs Subsurface
- Blueprint for Complete Fluids Program
 - Chemistry, Component Analyses, chemistry
 - Physical Properties, ‘PVT’ Experiments, Flow Assurance
 - Surface Recoveries
 - Mathematics, Modeling etc
 - Report formats
- Bringing it all together – The Real Value of Fluids Analysis
 - How is the data used
 - Bottomline: Increasing RRR and Decreasing F&D!

Cocktails & Hors d'oeuvres
Eat, Drink, and be Merry

THURSDAY, DECEMBER 6
5:00 - 6:00pm
Cocktail Hour with Complimentary Beer & Wine
6:00 - 8:00pm*
Music by Loose Change

16TH Floor
Petroleum Club of Shreveport

Please bring an unwrapped gift suitable for a boy or girl for donation to the Salvation Army Angel Tree Program

RSVP online:
www.altapl.org or www.sgs1.org

*cash bar after 6pm



Jerry W. Taylor
 Consulting Geologist, LLC

17377 LAUREN DRIVE
 PRAIRIEVILLE, LA 70769

1-(225)-287-8342

JWTGEOLOGY@GMAIL.COM

WWW.JWTGEOLOGY.COM

**R. LACY /
 CRAIN ENERGY**

*Oil and Gas Investments
 Exploration and Development*

222 EAST TYLER STREET
 LONGVIEW, TX 75601
 903-758-8276 (O)

Chris Bresch
*V. P. Exploration
 cbresch@rlacy.com*

Hunter Brumble
*Staff Geoscientist
 hbrumble@rlacy.com*

Scott Caswell
*Sr. Geophysicist/Geoscientist
 scaswell@rlacy.com*



Address: 401 Edwards Street, Suite 1601
 Shreveport, Louisiana 71101

Telephone: (318) 227-8668
 Fax: (318) 227-9012



*Operating in the ArkLaTex, MAFla,
 and South Texas Areas*

**MUSLOW
 OIL & GAS, INC.**

330 Marshall Street
 Suite 628
 Shreveport, LA 71101

Eric Weiss
President

(318) 221-8694
 Fax: (318) 227-2106

Thank You

From Matthew Chumley

The Shreveport Geological Society would like to thank Talban Kantala for donating a plethora of fossils and mineral samples he has collected. The collection was acquired at sites from Fort Worth all the way to the Carolinas. The assemblage includes: megalodon shark teeth, ray plates, fish, shark, and whale bones, ammonite and gastropod fragments, large quartz crystals, and many more. These fossils will be utilized to stock the SGS Rock Kit and to seed the Red River Revel Mock Dig. Thank you, Talban!”



The rock kit is ready
(pictured left).
E-mail Maps in Schools Chairman
Matthew Chumley at
mchumley@naguss.com
to give a talk with the kit and
present a geologic map to a class
of future geoscientists.

Baldwin Madden Energy, LLC

*Oil and Gas Property
Acquisitions and Development*

George A. Baldwin, Jr.

Gregory K. Madden

Christopher D. Franks
Senior Geologist

Lonnie J. Shaw
Director of Accounting & Finance

(318) 429-2220
(318) 429-2229 Fax

333 Texas Street, Suite 1919
Shreveport, LA 71101-3676

Reynolds Drilling Company, Inc.

7591 Fern Ave., Suite 2001
Shreveport, Louisiana 71105-5502

Phone: (318) 227-0118

Fax: (318) 227-0171

reydrill@bellsouth.net

Terry Pat Reynolds
President

STROUD PRODUCTION, LLC

333 Texas Street, Suite 860

Shreveport, Louisiana 71101-5302

Voice: (318) 429-2260

Fax: (318) 429 2255

Email: ras@spllc.com



SPANOIL INCORPORATED

416 TRAVIS ST., SUITE 806
SHREVEPORT, LA 71101
VOICE: (318) 221-2371
FAX: (318) 221-2372
anthony@spanoil.com

ANTHONY J. SPANO
PRESIDENT

From the Archives

By Annie Green

As printed in the January 1967 SGS Newsletter

SCIENCE DATA CENTER EYED FOR DALLAS

*By Bill Murchison
Oil Editor*

Dallas may bid soon to become the site of a national earth science data center, the Times Herald has learned.

The center would store and dispense by computer masses of information used by petroleum companies, universities, and scientists.

Earth sciences include geology, geography, geophysics, physiography and seismology.

Such a data bank might employ 2,000 persons in the near future, sources say. No cost estimate for the facility has yet been made. The center probably would be owned and operated by its customers.

AT LEAST FOUR other cities, including Houston, are known to want the center.

Local civic leaders and other interested parties may decide after Dec. 13 whether to join the contest.

A Shell Oil Co. computer specialist, Ed. L. Dillon of Houston, will outline at a luncheon that day the factors to be considered and evaluated in locating and establishing the facility.

Present at the luncheon, sponsored by the Dallas Geological Society, will be members of the Chamber of Commerce's board of directors and Petroleum Affairs Committee.

Whatever bid Dallas may make for the center will not be submitted to any group presently constituted.

"THE NEED FOR the center is becoming great enough that about the first place that moves forward energetically to set one up will receive the support of those concerned," says one source.



MILESTONE ENERGY, LLC

Oil & Gas Exploration and Development

Joseph A. Lott

Geologist / Managing Partner

Zach Kelly
Geologist

Zach McDonald
Geologist

Thomas A. Giles
Land Manager

333 Texas Street, Suite 516
Shreveport, Louisiana 71101
jlott100@bellsouth.net

Office: 318.212.0470
Fax: 318.212.0469

- Looking for Prospects
- Geophysical Consultant
- Landmark Graphics Corp. Software
- Synthetic Seismograms, modeling and cross sections



- Digitizing capability
- 2-D & 3-D Seismic Acquisition, Processing & Interpretation
- SeisVision 2-D & 3-D interpretation and mapping software

Bobbie Ben Taylor - President

O: 120 S Broadway, Suite 102
Tyler, Texas 75702
Mobile: (903) 521-3182

H: 7130 Holly Square Court
Tyler, Texas 75703
Email: taylor@webfoxmail.com

LOOKING FOR PROSPECTS

Let me tailor your geophysical needs.

HALLIBURTON

Do you require an integrated approach to total well construction, formation evaluation, and optimized production? Make the jump to our team. We have the best local people for designing your well, performing state of the art formation evaluation, and planning and executing your completion.

Logging & Perforating
Production Enhancement (Stimulation)
Cementing
Security Bits
Tools, Packers, & TCP
Coli Tubing Services

Shreveport Sales 318-673-4400
Tyler sales 903-581-5263
Kilgore Operations 1-800-654-6926



GeoGraphix

www.lmkr.com



Mark Mixon
Account Manager

mmixon@lmkr.com
P: +1 281 495 5657
D: +1 281 848 3310
C: +1 713 419 8918
F: +1 281 879 0135

LMK Resources Inc.
6051 North Course Drive, Suite 300,
Houston, TX 77072, USA

Potential users have raised an uncoordinated but spontaneous demand for such a facility, The Times Herald was told.

Dallas, because of its location, among other things, is believed to be in a competitive position for entering a bid. Houston, Tulsa, Midland, and Norman, Okla. are known to be seeking the center themselves. Denver is also said to be a possible competitor.

DALLAS' CHANCES for the center derive in large part from the city's proximity to many potential customers.

Information stored in the facility's computer would be available to subscribers by data-phone. The farther away the user, however, the more expensive the service.

Demand for the establishment of a center, according to sources, is evidence that handling large masses of information is a job for machines.

The data bank envisioned would be a facility with large storage capacity. There, information would be fed into a computer. By dialing the computer over his data-phone, a user could "ask" that certain information be fed back over the wire to a receiving instrument.

The information would emerge from the machine on magnetic tape, which would then be run through a read-out machine for translation. Only information that is public in nature would be stored. Oil companies would retain the right to hold back confidential data.

(Reprinted from the Dallas Times Herald, December 8, 1966)

Got a question or idea for "From the Archives"?
Email Annie Green at agreen@naguss.com.

Kingwood Exploration, LLC
Oil & Gas Exploration
and Production



Kurt M. Ley

Exploration Manager & Partner

Robert E. Braswell

Engineering/Operations Manager & Partner

416 Travis St., Suite 1100
Shreveport, LA 71101

Phone: 318-946-8585
Fax: 318-946-8287

kurt.ley@kingwoodexploration.com
robert.braswell@kingwoodexploration.com



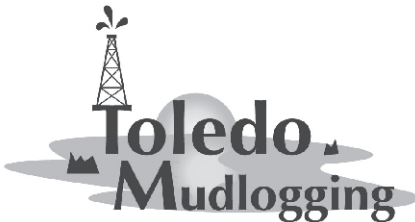
Established by G.M. Anderson

333 TEXAS ST., SUITE 2020

SHREVEPORT, LA 71101-5357

Phone: (318) 227-2000

Fax: (318) 425-5935



★ Milam, TX

★ Many, LA

The Horizontal Specialists!!

We work with the greatest companies
in the world, please give us a call
to see what we can do for you!!

Joe Eidson 318-623-5077

Michael Danos 318-332-7673

P. O. Box 1209, Many, LA 71449

Security Exploration, Inc.

8509 Line Avenue
Shreveport, LA 71106



J. Stafford Comegys
President

Donna Walker
Geologist

Barbara Lyles
Office Manager

OIL & GAS EXPLORATION

Tel: (318) 222-1066

Fax: (318) 222-4932

September Meeting

Photos courtesy of Brenda Pender and Kevin Hill

At the September Meeting, Ray Leonard presented “Climate Change, the Challenge for the Oil and Gas Industry and Geopolitical Implications.”



THE PETROLEUM CLUB OF SHREVEPORT

Serving delectable cuisine to the
Shreveport Geological Society
regular luncheon meetings.

318-425-4251

JM JM EXPLORATION
COMPANY, L.L.C.

David Meadows
Manager

Mid South Tower Bldg.
416 Travis Street, Suite 1414
Shreveport, LA 71101

Phone: 318-425-7617

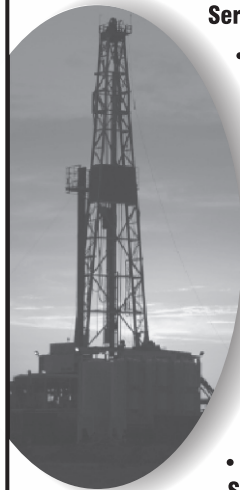
Fax: 318-425-1385

Email: jmexploration@comcast.net

BRAMMER ENGINEERING, INC.

Services:

- Drilling
- Completion
- Construction
- Production
- HSE
- Regulatory
- Land
- Accounting
- Risk Management
- Information Systems



www.brammer.com

318.429.2345 o • 318.429.2340 f

400 Texas Street • Suite 600 • Shreveport, LA 71101

WLS CORPORATION

OIL & GAS
EXPLORATION & PRODUCTION

Wayne L. Simpson
President

Philip Davis
Geologist

416 Travis Street, Suite 1006
Shreveport, Louisiana 71101

Office: (318) 425-2978

Fax: (318) 425-3166



LOUISIANA BOARD OF PROFESSIONAL GEOSCIENTISTS

Geoscientist Licensing in Louisiana

Did you know?

When you attend a monthly Shreveport Geological Society meeting, you earn one hour of continuing education credit for your LBOPG license. This is a simple and enjoyable way to get your hours! You can also find links to continuing education ethics credit courses at <https://sgs1.org/continuing-education/>.

Ready to track your CE hours?

Visit the LBOPG website today to download your continuing education log template lbopg.org/resources/continuing-education

	A	B	C	D	E	F	G	H	I	J	K	L	
1	Name:					PG License #:		Renewal Date:					
3	Date	Code*	Activity			Instructor	Sponsor Organization			Credits			
4			Title				Name	Location	Time	CEU	PDH		
5													
6													
7													
8													
9													
10													
11													
12													
13													
14													
15													
16													
17													
18													
19													
20													
21													
22	Total PDH claimed this renewal period:										0		
23	PDH carry over from previous year claimed for this report:												
24	Total PDH claimed to meet minimum requirements:										0		
25	PDH to be carried over to next year's report:												
26	Audits will be conducted randomly and/or as needed to confirm CE activities each year.												
27	It is your responsibility to collect and maintain proof of attendance and completion of CE activities in case an audit is called.												
28	*Code		Conversion of =	PDH		Minimum hrs. to renew	Maximum hrs. Allowed/Period						
29	Participant Credit	P	Each Direct Hour =	1		14	Geoscience Credits	Society Meetings					12
30	Instructor Credit	I	CEU, Papers, etc.=	10		1	Ethics Credits	Self directed Coursework					5
31	Authorship Credit	A	College Qtr. Hr.=	10		15	Total	Authorship - Paper					10
32	Meeting Credit	M	Semester Hour =	15				Authorship - Book					45
33	Ethics Credit	E	Instructor =	3XPDH									
34													
35	This form was intended to be a one (1) letter size page, i.e. one (1) years record of CE activity or 15 PDH.												
36	It is recommended that additional data be entered into a second (or third, etc.) worksheet in this spread sheet workbook.												
37	An entire (blank) form can then be copied into the new worksheet and the sheet tab named as the report year.												
38	This workbook has two (2) new sheets included as examples so you can start the process of recording your CE activity.												
39													



Shreveport Petroleum Data Assn., Inc.

333 Texas Street, Suite 900

Shreveport, LA 71101

(318) 429-2237

Fax (318) 429-2441

Website : www.spdalogs.org

spda@spdalogs.org

Cindy Shepherd

Manager



Bobby E. Jelks
President

Faith N. Gilbert
CFO

P. O. Box 7665
Shreveport, LA 71135-7665

Edward Yarborough
Exploration Manager

Phone: (318) 221-2688

Fax: (318) 459-2935

James Light
Land Manager



GEOVENTURES™

Ashley Garcia

Assistant Program Manager

Main +1 713 789 7250

Direct +1 281 781 0005

Fax +1 713 789 7201

Mobile +1 281 239 4576

ashley.garcia@iongeo.com

2105 City West Blvd., Ste. 900
Houston, TX 77042-2837 USA iongeo.com



L. CHRIS JOHNSON
Manager

2650 Fairfield Ave
Shreveport, LA 71104
BUS:(318) 222-6652
FAX:(318) 222-6673
cjohnson@jerlic.com

GRIGSBY PETROLEUM, INC.

**Oil & Gas Exploration
and Production**

333 Texas St., Suite 2285
Shreveport, LA 71101
Phone (318) 425-5306
Fax (318) 425-3733

Office Phone
(318) 222-7123

Residence Phone
(318) 925-2348

David L. Billingsley, Jr.
Certified Petroleum Geologist

400 Travis Street, Suite 1230
Shreveport, LA 71101
DLBJR1@aol.com

Cell Phone
(318) 426-4320



OIL AND GAS

DIANA L. CHANCE
MANAGING DIRECTOR

P. O. Box 1346 SHREVEPORT, LA 71164
(318) 227-2131 • FAX: (318) 222-5832
CELL: (318) 347-8848
WWW.DONNERPROPERTIES.COM

Monthly Permits - August 2018

Provided by ABCD GIS Mapping

Texas Permits

AppDate	API	Operator	County	Purpose	TD	Diso
8/1/18	34733165	SONERRA RESOURCES CORPORATION (801643)	NACOGDOCHES	Recompletion	9274	06
8/2/18	06730811	O'BENCO, INC. (617512)	CASS	New Drill	10300	06
8/2/18	41931794	XTO ENERGY INC. (945936)	SHELBY	New Drill	14800	06
8/3/18	36533249	TANOS EXPLORATION II, LLC (835976)	PANOLA	Recompletion	8130	06
8/3/18	40134506	KJ ENERGY, LLC (469901)	RUSK	Recompletion	7473	06
8/3/18	40135399	KJ ENERGY, LLC (469901)	RUSK	New Drill	10404	06
8/8/18	20334510	SABINE OIL & GAS CORPORATION (742143)	HARRISON	Recompletion	12280	06
8/7/18	31531055	BROOKS PETROLEUM COMPANY (097323)	MARION	New Drill	7500	06
8/8/18	34733382	ACTION ENERGY OPERATING LLC (008555)	NACOGDOCHES	New Drill	13350	06
8/7/18	36532746	TANOS EXPLORATION II, LLC (835976)	PANOLA	Recompletion	8160	06
8/8/18	36538442	ROCKCLIFF ENERGY OPERATING LLC (722890)	PANOLA	New Drill	12000	06
8/7/18	40134659	SABINE OIL & GAS CORPORATION (742143)	RUSK	Recompletion	10911	06
8/8/18	40135419	CCI EAST TEXAS UPSTREAM LLC (120023)	RUSK	New Drill	11800	06
8/10/18	18331149	BUFFCO PRODUCTION INC. (106406)	GREGG	Recompletion	10915	06
8/9/18	34733381	ACTION ENERGY OPERATING LLC (008555)	NACOGDOCHES	New Drill	13234	06
8/9/18	36538298	AMPLIFY ENERGY OPERATING LLC (020467)	PANOLA	New Drill	11500	06
8/9/18	36538443	ROCKCLIFF ENERGY OPERATING LLC (722890)	PANOLA	New Drill	12000	06
8/14/18	20331232	BOWLES ENERGY, INC. (084097)	HARRISON	Recompletion	9920	06
8/15/18	20334029	SABINE OIL & GAS CORPORATION (742143)	HARRISON	Recompletion	10298	06
8/16/18	20334779	SABINE OIL & GAS CORPORATION (742143)	HARRISON	Recompletion	11578	06
8/16/18	34732922	SONERRA RESOURCES CORPORATION (801643)	NACOGDOCHES	Recompletion	9651	06
8/13/18	36538427	ROCKCLIFF ENERGY OPERATING LLC (722890)	PANOLA	New Drill	12000	06
8/13/18	36538433	ROCKCLIFF ENERGY OPERATING LLC (722890)	PANOLA	New Drill	12000	06
8/13/18	36538435	ROCKCLIFF ENERGY OPERATING LLC (722890)	PANOLA	New Drill	12000	06
8/14/18	36538444	ROCKCLIFF ENERGY OPERATING LLC (722890)	PANOLA	New Drill	12000	06
8/13/18	36538445	SABINE OIL & GAS CORPORATION (742143)	PANOLA	New Drill	5300	06
8/17/18	36538446	ROCKCLIFF ENERGY OPERATING LLC (722890)	PANOLA	New Drill	12000	06
8/16/18	36538448	ROCKCLIFF ENERGY OPERATING LLC (722890)	PANOLA	New Drill	12000	06
8/17/18	36538449	ROCKCLIFF ENERGY OPERATING LLC (722890)	PANOLA	New Drill	12000	06
8/13/18	40530676	XTO ENERGY INC. (945936)	SAN AUGUSTINE	New Drill	20000	06
8/13/18	40530677	XTO ENERGY INC. (945936)	SAN AUGUSTINE	New Drill	20000	06
8/20/18	40135420	KJ ENERGY, LLC (469901)	RUSK	New Drill	10620	06
8/21/18	00530434	BP AMERICA PRODUCTION COMPANY (040798)	ANGELINA	New Drill	19500	06
8/21/18	18330945	SHOCO PRODUCTION, L.P. (778198)	GREGG	Recompletion	7900	06
8/21/18	20334570	PETRO-CHEM OPERATING COMPANY, INC (660001)	HARRISON	Recompletion	9592	06
8/22/18	20335315	PETRO-CHEM OPERATING COMPANY, INC (660001)	HARRISON	New Drill	6500	06
8/22/18	36538447	ROCKCLIFF ENERGY OPERATING LLC (722890)	PANOLA	New Drill	12000	06
8/21/18	45931485	SABINE OIL & GAS CORPORATION (742143)	UPSHUR	New Drill	11700	06
8/24/18	31531056	BROOKS PETROLEUM COMPANY (097323)	MARION	New Drill	7600	06
8/29/18	00530437	BP AMERICA PRODUCTION COMPANY (040798)	ANGELINA	New Drill	19500	06
8/31/18	20335316	COMSTOCK OIL & GAS, LP (170040)	HARRISON	New Drill	13000	06
8/30/18	36531625	BUFFCO PRODUCTION INC. (106406)	PANOLA	Recompletion	10201	06
8/30/18	36532059	SHERIDAN PRODUCTION COMPANY, LLC (775854)	PANOLA	Recompletion	9660	06
8/28/18	36538297	AMPLIFY ENERGY OPERATING LLC (020467)	PANOLA	New Drill	9500	06
8/29/18	36538450	TANOS EXPLORATION II, LLC (835976)	PANOLA	New Drill	9433	06
8/29/18	36538451	SABINE OIL & GAS CORPORATION (742143)	PANOLA	New Drill	12000	06
8/29/18	36538452	SABINE OIL & GAS CORPORATION (742143)	PANOLA	New Drill	12000	06
8/30/18	36538453	SABINE OIL & GAS CORPORATION (742143)	PANOLA	New Drill	12000	06
8/31/18	40134940	TRIVIUM OPERATING, LLC (871168)	RUSK	Recompletion	11250	06
8/27/18	40135421	TANOS EXPLORATION II, LLC (835976)	RUSK	New Drill	10836	06
8/30/18	40530650	BP AMERICA PRODUCTION COMPANY (040798)	SAN AUGUSTINE	New Drill	19500	06
8/31/18	40530664	XTO ENERGY INC. (945936)	SAN AUGUSTINE	New Drill	21000	06
8/30/18	41931810	XTO ENERGY INC. (945936)	SHELBY	New Drill	19900	06
8/30/18	45931486	SABINE OIL & GAS CORPORATION (742143)	UPSHUR	New Drill	11800	06

See map and Louisiana Permits on following pages.



JON E. SAYE

PETROLEUM GEOLOGIST

Office: 318-221-4504
 Fax: 318-221-4516
 Cell: 318-458-1515

1015 Mid South Twr. • P. O. Box 137
 Shreveport, LA 71161
jsaye@prodigy.net

COUTRET & ASSOC., INC.

Petroleum Reservoir Engineers
 Property Evaluation, Reservoir Engineering
 Fluid Injection, Property Management

Louisiana Tower
401 Edwards Street
Shreveport, LA 71101

Telephone: (318) 221-0482
Fax: (318) 221-3202
E-mail: rmcgowen@coutret.com



GEOVENTURES™

Alvin Rowbatham
 Sales Manager

Main +1 713 789 7250
 Direct +1 281 781 1005
 Fax +1 713 789 7201
 Mobile +1 832 372 2366
alvin.rowbatham@iongeo.com

2105 City West Blvd., Ste. 900
 Houston, TX 77042-2837 USA iongeo.com



Delta-T
Geophysical
Consulting, Inc.

Comprehensive Geophysical Services

- Kingdom Suite 2d/3d pak
- Geographix
- GMA
- Neuralog
- Mesa 3-D Design
- Digirule

Woodie Huffman, CEO

401 Edwards Street, Suite 826
 Shreveport, LA 71101-5510
 Phone: (318) 221-0414
 Fax: (318) 425-0688
 Email: delta@bellsouth.net

Williamson

OIL & GAS, INC.

Oil & Gas Development



Office: (318) 221-2923 400 Travis Street
 Fax: (318) 221-3488 Suite 1410
 Email: bob@williamsonogi.com Shreveport, LA 71101

Joe R. White, Jr.
 Petroleum Geologist

8505 Dogwood Trail
 Houghton, LA 71037
 Cell. 318-423-9828
 Hm. 318-949-3539
 Available for Consulting

AAPG CPG #5580
 MS RPG #0097
 LA CPG #345
Jwhite1362@aol.com
Joerjrw@gmail.com

Cowgill & Associates, L.L.C.

Oil & Gas Exploration & Production

Stephen C. Cowgill
 Geologist/Managing Partner

P. O. Box 72180 Office: 318.429.2170
 Bossier City, LA 71172-2180 Fax: 318.429.1170
cowgill@suddenlink.net Cell: 318.455.9516

CSC ENERGY CORP.

OIL & GAS EXPLORATION

Joel B. Chevalier
 PRESIDENT

401 Edwards Street
 Suite 820
 Shreveport, Louisiana 71101
 Office: (318) 221-5625 • Fax: (318) 459-1650
 Mobile: (318) 469-5625

BER-EX-CO., INC.

Orville Roger Berg, Ph.D.

Exploration, Exploitation
Seismic Evaluation
Domestic, International

400 Travis St., Suite 1612
Shreveport, LA 71101-3108
(318) 220-0300
orberg@bellsouth.net

9949 Beaver Creek Drive
Shreveport, LA 71106
(318) 798-1748

GERARD ASSOCIATES, L.C.

OIL & GAS EXPLORATION
DEVELOPMENT AND ACQUISITIONS

J. A. Wojtkiewicz • Charles Gerard

625 Market St., Suite 250
Shreveport, LA 71101
Tel. (318) 221-0761 • FAX (318) 221-8835

ODEN & ASSOCIATES, LLC

Oil and Gas Exploration



Alan Schlichtemier
Geologist

Email: oden@shreve.net

400 Travis St., Ste. 1301
Shreveport, LA 71101

(318) 222-2400
Fax: (318) 226-0840



Kalmbach
Production Company, LLC

Sam Kalmbach
Geologist

400 Travis Street, Ste. 516
Shreveport, LA 71101

office: (318) 424-6566
cell (318) 470-9977

e-mail: sam.geo.kpc@gmail.com

BARROW-SHAVER RESOURCES COMPANY

Oil & Gas Exploration & Development

Scott Owen Shaver

Managing Partner and Exploration Manager

903-593-5221 Office
903-593-1692 Fax
903-561-4711 Home
903-582-4711 Farm
903-245-4999 Mobile

977 Pruitt Place
Tyler, Texas 75703
sos-bsr@tyler.net



Drilling Contractor
Oil & Gas Operator
Turnkey Services
Well Service & Workover
Working Interest Participant

318-992-4111

P. O. Box 2990, Jena, LA 71342

justissoil.com

TIM H. MARSHALL DIRCK E. WUELLNER

MARSHALL-WUELLNER, INC.

Petroleum Geologists

AmSouth Tower
333 Texas St., Suite 608
Shreveport, LA 71101-3671
Office: (318) 429-2250
Fax: (318) 429-2251

Mike Rogers Drilling Co., Inc.

Drilling & Interest Participation

MIKE ROGERS, PRESIDENT
CRAIG ROGERS, VICE PRESIDENT

Office: 870-234-2356 • Fax: 870-234-7487

1708 N. Vine Street • P. O. Box 126 • Magnolia, AR 71754
email: mrdc1981@gmail.com

Monthly Permits - August 2018

Provided by ABCD GIS Mapping

Louisiana Permits

County	WellSN	WellName	PermitDate	Depth	Organization
CADDO	251195	ETCHISON	8/3/18	2399	M & M OIL CO., L.L.C.
CADDO	251199	HA RA SUN;DEAN 20 H	8/7/18	16900	AETHON ENERGY OPERATING LLC
CADDO	251200	HA RA SUN;DEAN 20 H	8/7/18	17000	AETHON ENERGY OPERATING LLC
CADDO	251201	HA RA SUL;DEAN 17 H	8/7/18	17000	AETHON ENERGY OPERATING LLC
CADDO	251202	HA RA SUL;DEAN 17 H	8/7/18	17000	AETHON ENERGY OPERATING LLC
SABINE	251198	NABORS-LOGAN	8/7/18	4500	NABORS-JOHNSON PROD CO., INC.
DE SOTO	251205	HA RA SUR;NP 5&8-12-11 HC	8/9/18	23335	CHESAPEAKE OPERATING, L.L.C.
DE SOTO	251206	HA RB SUTT;NP 32&29-13-11 HC	8/9/18	23494	CHESAPEAKE OPERATING, L.L.C.
DE SOTO	251207	HA RB SU67;NP 29&30-13-11 HC	8/9/18	23571	CHESAPEAKE OPERATING, L.L.C.
DE SOTO	251208	HA RB SU67;NP 29&20-13-11 HC	8/9/18	23572	CHESAPEAKE OPERATING, L.L.C.
BOSSIER	251212	GRAY RA SUL;LOWE 29	8/13/18	12250	XTO ENERGY INC.
DE SOTO	251211	HA RA SUE;BARNES RICHEY 11 H	8/13/18	18500	BRIX OPERATING LLC
DE SOTO	251213	HA RA SUBB;BRWN10&3&34-15-14HC	8/13/18	24339	CHESAPEAKE OPERATING, L.L.C.
DE SOTO	251214	HA RA SUBB;BRWN10&3&34-15-14HC	8/13/18	23999	CHESAPEAKE OPERATING, L.L.C.
RED RIVER	251210	HA RB SU90;NRG 29-12-10 H	8/13/18	17630	TELLURIAN OPERATING LLC
CADDO	251224	KIRBY	8/23/18	1200	KIRBY OIL COMPANY
CADDO	251225	HUDSON-FULLER	8/23/18	1200	TYSCO OIL AND GAS CORP.
DE SOTO	251223	HA RA SUP;BEAUBOEUF 16 H	8/22/18	17900	COVEY PARK GAS LLC
BOSSIER	251234	BLVU-NAC-FF-10SU;WEATHERBEE	8/27/18	500	BAYOU STATE OIL CORPORATION
BOSSIER	251235	BLVU-NAC-FF-10SU;WEATHERBEE	8/27/18	500	BAYOU STATE OIL CORPORATION
BOSSIER	251236	BLVU-NAC-FF-10SU;WEATHERBEE	8/27/18	500	BAYOU STATE OIL CORPORATION
CADDO	251237	CADDO LAKE FEE	8/27/18	1580	BIG M OIL COMPANY
CADDO	251238	HA RA SUD;HUNTR 26&35-15-15 HC	8/27/18	22650	CHESAPEAKE OPERATING, L.L.C.
CADDO	251239	HA RA SUD;HUNTR 26&35-15-15 HC	8/27/18	22551	CHESAPEAKE OPERATING, L.L.C.
CADDO	251240	HA RA SUD;HUNTR26&35&2-15-15HC	8/27/18	23077	CHESAPEAKE OPERATING, L.L.C.
DE SOTO	251241	HA RA SUMM;MCCOY 35-2 HC	8/27/18	23000	COMSTOCK OIL & GAS—LA, LLC
DE SOTO	251242	HA RB SUYY;BAG 13&24-13-16 HC	8/27/18	22000	INDIGO MINERALS LLC
DE SOTO	251250	SROY 8&17-13-15 H	8/29/18	23000	INDIGO MINERALS LLC
DE SOTO	251251	SROY 8&17-13-15 H	8/29/18	23000	INDIGO MINERALS LLC
DE SOTO	251232	U HOSS RA SUHHJ;RASCOE 13	8/24/18	7700	FONTAINEBLEAU OPERATING, LLC
WEBSTER	251230	BABB	8/24/18	5000	JOHN J WELSH

See Map and Texas Permits listed on previous pages.



Craig C. Barclay
 Petroleum Geologist, L.L.C.

522 Dumbarton Shreveport, LA 71106
 Phone: (318) 869-2223
 Mobile: (318) 426-2536
 cbarclay1@comcast.net



Weatherford

Richard 'Dick' Swindell
 Technical Sales Advisor
 Wireline & Borehole Seismic

Weatherford International, Ltd.
 1101 ESE Loop, 323, Ste. 200
 Tyler, Texas 75701, USA

Direct: +1.903.594.4926
 Main: +1.903.534.5243
 Fax: +1.903.939.8907
 Mobile: +1.903.530.4016
 richard.swindell@weatherford.com
 www.weatherford.com

T. W. McGuire & Associates, Inc.

Registered Petroleum Engineers

416 Travis St., Suite 1400
 P. O. Box 1763
 Shreveport, LA 71166
 (318) 222-0761
 (318) 222-0799 Fax

James T. Maranto Robert T. Maranto

BAKER HUGHES
 a GE company



Jim Hankla
 Sales
 Southern US

M +1 903 312 8500
 james.hankla@bhge.com



416 TRAVIS STREET ♦ SUITE 600
 SHREVEPORT, LA 71101
 PHONE ♦ (318) 425-0101
 FAX ♦ (318) 425-2211

MORRIS NICHOLS
GARY ABRAMS
JOHN STROUD
 GEOLOGISTS



Joseph H. McDuff
Geologist

351 Chapel Loop
 Mandeville, LA 70471
 985.845.9430
 jmcduff@bellsouth.net

Like what you see?

Fill out and mail in this form or find it online at SGS1.org.

You can renew online instead
 of filling out this card!
 ★ www.sgs1.org ★

Active \$25 / yr	
Associate \$25 / yr	
Honorary \$0 / yr	
Student \$5 / yr	
Optional Donation SGS Scholarship Fund	
Optional Donation Faithful Friends	
Total Payment	

NAME (Please Print) _____

Check if new applicant or change of address.

SHREVEPORT GEOLOGICAL SOCIETY, P.O. BOX 750 • SHREVEPORT, LA 71162

DATE _____

APPLICANT OR MEMBER PLEASE TYPE OR PRINT

LAST NAME	FIRST	INITIAL	NICKNAME	
COMPANY		POSITION OR TITLE		
COMPANY MAILING ADDRESS	CITY	STATE	ZIP	COMPANY PHONE
HOME ADDRESS	CITY	STATE	ZIP	HOME PHONE
FAX NUMBER	E-MAIL ADDRESS		CELL PHONE	
SCHOOL	DEGREE	MAJOR	YEAR	
PROFESSIONAL AFFILIATIONS	AAPG <input type="checkbox"/> APGS <input type="checkbox"/>	GSA <input type="checkbox"/> PS <input type="checkbox"/>	SEG <input type="checkbox"/> AGI <input type="checkbox"/>	SEPM <input type="checkbox"/> SIPES <input type="checkbox"/>
			AIME <input type="checkbox"/> SPE <input type="checkbox"/>	SPWLA <input type="checkbox"/> OTHER <input type="checkbox"/>

OUTLINE OF EXPERIENCE _____

SPOUSE'S NAME _____

PREFERRED MAILING ADDRESS
 HOME BUSINESS
 EMAIL ME THE NEWSLETTER
 (no printed copy will be mailed)

QUALIFICATIONS FROM BY-LAWS

In order to be eligible for active membership, an applicant shall be engaged in the practice or teaching of geology or related sciences.

In order to be an associate member, an applicant shall be interested in geological science but not actively engaged in the practice or teaching of geology or related sciences.

TO THE EXECUTIVE BOARD:

I hereby apply for ACTIVE ASSOCIATE membership in SHREVEPORT GEOLOGICAL SOCIETY and pledge myself to abide by its Constitution and By-laws.

Date: _____ Signature: _____

SPACE BELOW TO BE USED FOR PROCESSING ONLY

Membership Committee

Received: _____

Approved for: Active
 Associate
 Student

Executive Board

Approved: _____ SECRETARY

Date: _____

CAPLIS FORESTRY, LLC

JEFFREY W. CAPLIS

-CONSULTING FORESTER-

CELL: 318-617-9016

OFFICE: 318-752-3662

586 CAPLIS SLIGO RD.

BOSSIER CITY, LA 71112

-complete forestry services-

- **Timber Appraisals • Timber Management • Timber Cruising •**
- **Damage Appraisals • Tree Planting •**

B.S. LOUISIANA TECH: SCHOOL OF FORESTRY

TCW

Thomas C. Wyche

CERTIFIED PETROLEUM GEOLOGIST

Horizontal & Vertical Projects

E.Tx., N.La., S.Ark.

333 Texas St., Suite 703

Shreveport, LA 71101

318.465.2944

geo1tcw@gmail.com

LA-PG

AAPG-CPG

SHREVEPORT GEOLOGICAL SOCIETY

Committees and Chairmanships

2018 - 2019

Advertising	Kurt Ley	Kingwood Exploration, LLC	918-7182
Budget	Morris Nichols	Stround Petroleum, Inc.	425-0101
Continuing Education	Needed		
Employment	Cody Lenert	Marlin Exploration	222-8406
Entertainment	John Hansen	Hansen Oil Corp	861-2269
Environmental	David Williamson	ATC Group Services, LLC	868-4848
Faithful Friends	Qiu Lu	O'Brien Energy, Co.	865-8568
Field Trip	Needed		
5K Run	Mark Dunham	Sugar Creek Producing Co.	221-2899
Golf Tournament	Scott Comegys	O'Brien Energy Co	865-8568
	Cody Lenert	Marlin Exploration	222-8406
Government Affairs	Scott Stroud	Stroud Exploration Co., LLC	425-0101
Historical	Ralph Richardson	Sartor-Richardson	869-4100
Honorary Membership/ Awards	David Billingsley, Jr.	Independent	222-7123
Investments	Morris Nichols	Stroud Petroleum, Inc.	425-0101
Library	Ralph Richardson	Sartor-Richardson	869-4100
Maps in Schools	Matthew C. Chumley	Nadel and Gussman	222-0908
Membership	Zach Gray	Ensign Energy	429-2220
Membership Directory	David Williamson	ATC Group Services, LLC	868-4848
Newsletter	Kevin Hill	Hill Geophysical Consulting	221-3329
Program	Cody Lenert	Marlin Exploration	222-8406
Publications	Annie Green	Nadel and Gussman Ruston	222-0908
Revel Mock Dig	Carrie Salinas	Virtus Environmental	518-1622
	Needed		
Scholarship Endowment	Alan Schlichtemier	Oden & Associates, LLC	222-2400
Scholarship Grants	Alan Schlichtemier	Oden & Associates, LLC	222-2400
Sci-Port Discovery	Zach Kelly	Milestone Energy	212-0470
Tennis Tournament	Anthony Spano	Spanoil Exploration, Inc.	221-2371
Website - Newsletter Editor	Rachel McNerney	Hill Geophysical Consulting	221-3329
Youth Activities	Larry Frizzell	TMR Exploration, Inc.	746-3616
	Mark Dunham	Sugar Creek Producing	221-2899
AAPG Delegate (7/1/16-6/30/19)	Mark Dunham	Sugar Creek Producing Co.	221-2899
Executive Assistant	Annie Green	Nadel and Gussman Ruston	222-0908
SGS Auxiliary President	Susan Schroeder		869-2401

HONORARY MEMBERS

James D. Aimer ^A	James B. Harris ^A	Paul Todd Landes, Jr. ^A	C. Ray Scurlock
William E. Bancroft ^A	William E. Hayes ^A	W. W. Lincoln ^A	Walter H. Spears ^A
Michael W. Beckman ^A	Roy T. Hazzard ^A	William R. Meaney	William C. Spooner ^A
Orville Roger Berg	Dr. Leo Hermann ^A	Clarence L. Moody ^A	George D. Thomas ^A
B. W. Blanpied ^A	Kevin B. Hill	John T. Palmer	Arthur H. Trowbridge
Prentis L. Boatner, Jr.	Charles J. Hoke ^A	Thomas H. Philpott ^A	Henry J. Tyler ^A
Alan L. Brittain	Perry G. Holloway ^A	William M. Plaster ^A	Claude N. Valerius ^A
John Franks ^A	Walter E. Hopper ^A	Gene R. Robinson ^A	Warren B. Weeks ^A
Victor P. Grage ^A	E. B. Hutson ^A	C. Lane Sartor ^A	Percy J. Wheeler, Jr.
John C. Grunau ^A	L. Lee Kincade ^A	Erwin W. Saye ^A	B. Ross White ^A
J. Frank Harrell ^A	Joseph O. Laird ^A	Fred R. Schroeder ^A	R. M. Wilson ^A

(^A deceased)

Shreveport Geological Society

P. O. Box 750 • Shreveport, LA 71162