



Shreveport Geological Society **NEWSLETTER**

Volume 59, No. 1

September 2018

2018-2019 Shreveport Geological Society Board



Meet the Board p. 7

Change and Demand p. 13

GCAGS-GCSSEPM Details p. 35



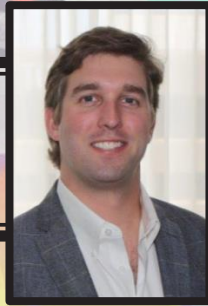
SGS1.ORG

Shreveport Geological Society

Officers and Board Members 2018-2019

- President.....D. Lewis Billingsley III**
Justiss Oil Company, Inc., P.O. Box 2990, Jena, LA 71342
318-992-4111, Fax: 318-992-7201, DLBillingsley3@gmail.com
- First Vice President.....Qiu Lu**
O'Brien Energy Company, P.O. Box 6149, Shreveport, LA 71136
318-865-8568, Fax: 318-869-3335, qiulu@obrienenergyco.com
- Second Vice President.....Cody Lenert**
Marlin Exploration, LLC, 401 Edwards Street, Suite 1200, Shreveport, LA 71101
318-222-8406, clenert@marlinexploration.com
- Secretary.....Zach Gray**
Ensign Energy LLC, 333 Texas Street, Suite 1919, Shreveport, LA 71101
318-429-2220, zach.gray@ensightenergy.com
- Treasurer.....Morris Nichols**
Stroud Exploration Company, L.L.C., P.O. Box 565, Shreveport, LA 71162
318-429-2260, mnichols@stroudexploration.com
- Board Member.....Zach Kelly**
Milestone Energy, L.L.C., 333 Texas Street, Suite 516, Shreveport, LA 71101
318-212-0470, Fax: 318-212-0469, zkelly@bellsouth.net
- Board Member.....Matthew Chumley**
Nadel and Gussman Ruston, 330 Marshall Street, Suite 700, Shreveport, LA 71101
318-222-0908, mchumley@naguss.com
- Board Member.....Jamey Walker**
Huntington Resources, 1700 Clarendon Street, Longview, TX 75601
903-238-6808, huntingtonresourcesjfw@gmail.com
- Board Member.....Sarah Wilkes**
Jones Environmental, Inc., 708 Milam Street, Ste. 100, Shreveport, LA 71101
318-525-6417, swilkes10@gmail.com
- Executive Assistant to the Board.....Annie Green**
Nadel and Gussman Ruston, 330 Marshall Street, Suite 700, Shreveport, LA 71101
318-222-0908, agreen@naguss.com
- Immediate Past President.....Scott G. Comegys**
O'Brien Energy Company, P.O. Box 6149, Shreveport, LA 71136
318-865-8568, Fax: 318-869-3335, scomegys@obrienenergyco.com

*Message
from*



*the
President*

*H*ello to all and I hope everyone had an enjoyable summer! Drawing on inspiration from FDR, I set out to pen this correspondence from my hearth with the gas logs on and a dog at my feet but quickly had to abandon the notion when it became much too warm, even with the air conditioner set on 65. So much for the attempted endearing newsletter...

However, as temperatures begin to cool, the SGS will be heating up for an exciting year. Oil prices seem to be hanging in there and are certainly much better now than they were a year ago. West Texas Intermediate is priced around \$20 higher per barrel at the time of this writing than it was last September. Natural Gas is another story with the resource plays producing full bore, including the Haynesville, of which I've been told 90% remains to be drilled. However, I would like to say that I am cautiously optimistic for oil markets in the near future and hope to see a stable price set in and stick around.

*Meeting
September 18*

Our first speaker will be Ray Leonard on "Climate Change, Peak Demand and the Challenge for the Oil and Gas Industry". I look forward to his talk and suspect this will lead to some healthy debate.

The ALTAPL/SGS Golf Tournament will be held again at East Ridge Country Club September 7th and will be divided into two flights with shotgun starts beginning at 7:30 AM and 1:00 PM. The tournament will be followed by an evening of libations, dinner, and

door prizes. This is always one of the highlights of the SGS season and being the poor golfer that I am, I particularly enjoy a good four-man scramble. The deadline for entry is August 24th, so don't forget to get your entry forms in!

As I'm sure you all know, Shreveport will be hosting the 68th Annual GCAGS Convention September 30th-October 2nd just a short walk away from many of your offices. In those three days, there will be over sixty technical talks covering subjects that range from depositional settings, deepwater exploration, modern seismic technology, and many more. In addition there will be field trips, poster sessions, short courses, luncheons, and a tennis tournament. Kevin Hill has also agreed to drink wine with us again on a weeknight and talk about geology. Not a bad way to get some continuing education hours if you ask me! There is truly something for everyone and I encourage all of you to sign up, attend, and bring your spouse as we are set to have a great convention right in our hometown.

*GCAGS Convention
Sept. 30 – Oct. 2*

I look forward to seeing all of you in the coming months and hope to serve you well as your new President. Please do not hesitate to call or email me if I can be of any assistance to you.

Best,

Lewis Billingsley

WE NEED YOUR HELP!

Please Volunteer to
Judge a Technical Session at the GCAGS Convention.
Contact: Mark Dunham
mdunham@sugarcreekproducing.com
318-221-2899

INTERESTED IN SPONSORING?

Corporate sponsorship opportunities are still available.
Visit GCAGS2018.org to sign up.

Faithful Friends 2017-2018

Mary Barrett	Atkins, Ltd., L.L.C.
Carl Gray	BER-EX-CO., Inc.
Scott Caswell	David L. Billingsley, Jr.
Milbird Resources, L.L.C.	Bivins Energy Corporation
Milestone Energy, L.L.C.	Cowgill & Associates, L.L.C.
Oden & Associates, L.L.C.	Cypress Operating, Inc.
Palmer Petroleum, Inc.	Franks Exploration Company, L.L.C.
Sartor-Richardson, L.L.C.	Geological Drafting Consultants
Jon Saye	C.H.C. Gerard and Associates
Alan Schlichtemier	Grigsby Petroleum, Inc.
Shaw-Laird, LLC	Hill Geophysical Consulting
John D. Silvernail	Lakewood Production, L.L.C.
Stratagraph, Inc.	Marlin Exploration, L.L.C.
Scott Stroud	T.W. McGuire & Associates, Inc.
Joe White, Jr.	Weiser-Brown Operating Co.
William Downs	Spanoil Exploration, LLC
Qiu Lu	Sugar Creek Producing Company, L.L.C.
Windell B. Phillips	Clifford Leonard

To be a Faithful Friend for 2018-2019, please contact Qiu Lu.

Invest in the Future

You can **donate** to the SGS Scholarship Fund online at SGS1.org or by writing a check to the SGS with "Scholarship" in the memo line, and you may include an **"in memory of"** or **"in honor of"** note as well.

Mail to: Shreveport Geological Society,
P.O Box 750, Shreveport, LA 71162.

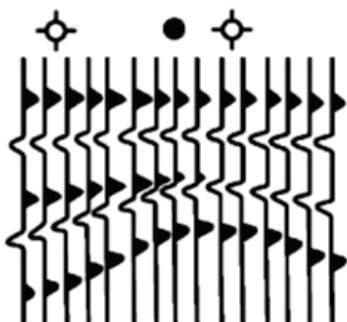
Join our group on

Linked in

Keep in Touch

through the Shreveport Geological
Society LinkedIn Group.

Hill Geophysical Consulting



Kevin B. Hill

*Integrating Geophysical Technology
with Geology*

**What's Under Your
Feet? Find out:
HILLGEO.COM**



415 TEXAS ST., SUITE 200
SHREVEPORT, LA 71101

318.221.3329
kevin@hillgeo.com



Camterra Resources

Main Office

2615 East End Blvd South
Marshall, TX, 75672
Telephone: (903) 938-9949
Fax: (903) 935-0521

Dallas Office

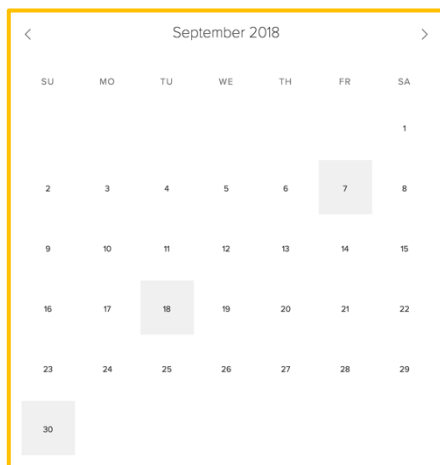
100 Crescent Court
Suite 1800
Dallas, TX, 75201
Telephone: (214) 310-0514

www.camterra.com

Chief Executive Officer:	Zach Carlile
President:	Paul Marchand
Exploration Manager:	Daniel Sevier
Director of Operations and Engineering:	Jim Larkin
Land Manager/ General Counsel:	Allen C. Staggers, Jr.
Asst. General Counsel:	Pam Johnson
Sr. Landman:	Steve Copeland
Sr. Landman:	Jason Derebery

Seeking Opportunities in Texas, Louisiana, Arkansas, Mississippi, and New Mexico

Calendar of Events



View this interactive calendar at SGS1.org

September 7

25th Annual ALTAPL-SGS Golf Tournament (page 30)

September 14

RSVP for the Monthly Meeting

September 18

Monthly Meeting; 11:30 a.m. - 1 p.m.; Petroleum Club 15th Floor
Ray Leonard presents “Climate Change, Peak Demand and
the Challenge for the Oil and Gas Industry”

September 30 – October 2

GCAGS-GCSSEPM Convention in Shreveport

September 29 – October 7

Mock Dig at the Red River Revel (page 18)

On the Cover: Your 2018-2019 Shreveport Geological Society Board.
Group and individual board photos by Brenda Pender.

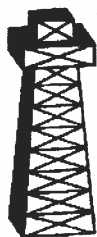
Interior Art: Page 1 “Proximate Cause” (*detail*) by Gwen Norsworthy.
Courtesy of the Norsworthy Gallery, 214 Texas St., Shreveport, LA
71101, online at TheNorsworthy.com.

Page 11 “Wheatstacks (End of Summer)” (*detail*) by Claude Monet.

Contact the Newsletter Editor: 1RachelMcNerney@gmail.com

WHEN IT HAS
TO BE DONE
FAST !

400 TRAVIS ST.
SUITE 1606
S'PORT, LA
71101



**GEOLOGICAL
DRAFTING
CONSULTANTS**



COMPUTER
MAPPING FOR
THE OIL & GAS
INDUSTRY.
COLOR PLOTTING
AND DIGITIZING.

JOHN
HARRELL,
OWNER
ANDY
CARDIN,
DRAFTSMAN

PHONE

221-7780



**skrivanos
engineering, inc.**

Meet The Board



President

Lewis Billingsley has worked as a Geologist for Justiss Oil Company for the last 5 years. He graduated from the University of Arkansas in Fayetteville. In his spare time, Lewis enjoys traveling, hunting, and mountaineering.



First Vice President

Qiu Lu has been working as a geologist for O'Brien Energy Company since 2006. She is currently serving her third year on the SGS board. She oversees the SGS Faithful Friends Program. She enjoys traveling and reading.



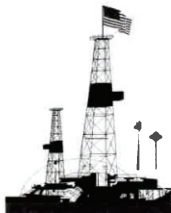
Second Vice President

Cody Lenert has worked for Marlin Exploration for twelve years. He is honored to be on the board and helping in any capacity needed. Cody enjoys spending time with his wife and 2 boys and his favorite hobbies are duck hunting and fishing for redfish & speckled trout.



Secretary

Zach Gray is ten years into his career as a petroleum geologist. He has previously worked for Forest Oil in Denver and Chief Oil and Gas in Dallas and is currently working for Ensign IV Energy here in Shreveport. He is proud to serve on the SGS board and looks forward to the coming year.



PALMER PETROLEUM, INC.

Exploration and Development • Operations • Oil and Gas Investments

330 Marshall Street, Suite 1200
Shreveport, Louisiana 71101

Phone: (318) 222-0517

www.palmerpetro.com

Fax: (318) 424-3256



Document Solutions

CONSTRUCTION DOCUMENT & INFORMATION MANAGEMENT SERVICES

MANAGED PRINT SERVICES

ARCHIVING & INFORMATION MANAGEMENT

GRAPHIC DESIGN SERVICES

BANNERS, YARD SIGNS, TRUCK MAGNETS, WINDOW DECALS

OVERSIZED SCANS, & COPIES

shreveport.production@e-arc.com

305 Market Street, Shreveport, LA 71101 | 318.221.0674 | www.e-arc.com

Meet The Board

(continued)



Treasurer

Morris P. Nichols has been employed at Stroud Exploration Company for 19 years. He has served previous terms on the boards of the Shreveport Geological Society, the Shreveport Map Association as well as the Shreveport Petroleum Data Association. Morris's hobbies include Golf, Tennis and Hunting.



Board Member

Sarah Kaye Wilkes has worked as an Environmental Geologist for Jones Environmental, Inc. since her graduation from Centenary College in May 2013. She specializes in Phase I Environmental Site Assessments as well as soil and groundwater sampling and remediation plans. She is excited to join the SGS board and learn from the experiences and knowledge of fellow board members.



Board Member

After graduating from Centenary in 2010, **Matthew Chumley** began his career with Nadel and Gussman as an exploration geologist working projects in North Louisiana, South Arkansas, East Texas and North Texas. He recently finished a term on the board of directors for the Shreveport Petroleum Data Association and currently serves on the St Joseph School Council. He enjoys spending time with his wife and two young children and is an avid outdoorsman.

Meet The Board

(continued)



Board Member

Jamey Walker recently retired from R. Lacy, Inc. in Longview, Texas after 28 years as a geologist and most recently V. P. and head of the Exploration Department. He formed Huntington Resources in June 2017, a geological consulting business. A 1978 graduate of LSU with a BS in Geology, he has almost 40 years of experience in the oil and gas industry. Having worked for several independents in Shreveport back in the 1980's he has strong connections to the SGS. He looks forward to working with other Board members to strengthen the SGS and continue the tradition of providing education, fellowship, and support for fellow geologists.



Board Member

Zach Kelly is a geologist at Milestone Energy. He is currently serving his third year on the SGS Board. As a board member, he oversees SciPort and Youth Activities. He graduated from LSU and enjoys watching sports.



Executive Assistant to the Board

Annie Green has been a geotech for Nadel and Gussman for three years. Prior to that, she was a geotech at Tensas Delta/TDX Energy for 11 years. She is SGS's Executive Assistant to the Board as well as Publication Committee Chairman. She also serves on the Christmas in Haughton Festival and National Night Out planning committees. In her free time, Annie enjoys outdoor adventures with her husband and three sons.

The September Meeting

Make your
RESERVATION

Ray Leonard

presents

“Climate Change, Peak Demand and the
Challenge for the Oil and Gas Industry”

11:30 a.m. Tuesday, September 18

The Petroleum Club of Shreveport, 15th floor

Cost: \$20, Children 10 and under \$8

We encourage members to invite guests, spouses, and
friends to any of our meetings.

If you'd like a seat, kindly **RSVP**
by **Friday, September 14** at SGS1.org,
or email or call in your reservation to

Cody Lenert

clenert@marlinexploration.com

318-222-8406

Name: _____

I will bring ___ guest(s): _____



**WILL-DRILL
RESOURCES
INCORPORATED**

**PHONE (318) 222-7464
FAX (318) 222-7466**

**416 TRAVIS, SUITE 1200
SHREVEPORT, LA 71101
OIL AND GAS EXPLORATION**



EXPLORATION, L.L.C.

401 Edwards Street, Suite 1200
Shreveport, LA 71101

P.O. Box 1367
Shreveport, LA 71164

office: (318) 222-8406
fax: (318) 222-6061
email: mei@marlinexploration.com

Jon Q=Petersen
President

S. Cody Lenert
Geologist

Autie T. Orjias
V.P./Land Manager

Ryan Q=Petersen
Land

Dean Giles
Secretary/Treasurer

Cypress Operating, Inc.



**STEVEN A. SINGLETARY
BEN ROBINSON**

Petroleum Geologists

Office: (318) 424-2031
Fax: (318) 425-8140

330 Marshall Street, Suite 930
Shreveport, LA 71101

SEI[®]
Seismic Exchange, Inc.

Strategic Speculative Surveys
Geophysical Data Marketing & Management

YouR
Full Service
National
Seismic Data
Marketing Firm

Dallas Contacts:
Larry Tull
Sandi Smith
Holly Sumrow

DALLAS DENVER HOUSTON NEW ORLEANS TULSA

12801 N. Central Expressway, Suite 570
Dallas, Texas 75243

214-373-1212 FAX 214-373-1208
www.seismicexchange.com

Ray Leonard

Ray Leonard was born in New York and received a Bachelor of Science in Geology from the University of Arizona and a Master of Arts in Geology from the University of Texas at Austin. He is currently President of Anglo Eurasia, a consulting firm for the Oil and Gas Industry. He has held executive positions with Amoco, FIOC, the Russian Oil Major YUKOS, the Hungarian National Oil Company MOL, the Kuwait Energy Company and was most recently Chief Executive Officer of Hyperdynamics, an independent oil company exploring for oil and gas in West Africa.



He has been recognized for his technical excellence by the American Association of Petroleum Geologists being named a Distinguished Lecturer in the Field of Geochemistry and by numerous professional publications including diverse subjects such as the Origin of Overpressure, geology of Offshore Trinidad, the North Sea, East Siberia and Russian oil reserves.

He has been active in the debate regarding world oil and gas reserves for many years, presenting and publishing at forums such as Council on Foreign Relations (1994 and 2014), Center for Strategic Studies (2001), International Energy Agency (2003), the AAPG Hedberg Conference (2006), Aspen Forum (2008), Emirate Center for Strategic Studies (2013) and 26th World Gas Conference (2015).



1-(225)-287-8342

JWTGEOLOGY@GMAIL.COM

WWW.JWTGEOLOGY.COM



**Address: 401 Edwards Street, Suite 1601
Shreveport, Louisiana 71101**

Telephone: (318) 227-8668
Fax: (318) 227-9012

*Operating in the ArkLaTex, MAFla,
and South Texas Areas*

**R. LACY /
GRAIN ENERGY**

Oil and Gas Investments
Exploration and Development

**222 EAST TYLER STREET
LONGVIEW, TX 75601
903-758-8276 (O)**

Chris Bresch
V. P. Exploration
cbresch@rlacy.com

Hunter Brumble
Staff Geoscientist
hbrumble@rlacy.com

Scott Caswell
Sr. Geophysicist/Geoscientist
scaswell@rlacy.com

MUSLOW OIL & GAS, INC.

330 Marshall Street
Suite 628
Shreveport, LA 71101

Eric Weiss
President

(318) 221-8694
Fax: (318) 227-2106

Baldwin Madden Energy, LLC

*Oil and Gas Property
Acquisitions and Development*

George A. Baldwin, Jr.

Gregory K. Madden

Christopher D. Franks
Senior Geologist

Lonnie J. Shaw
Director of Accounting & Finance

(318) 429-2220
(318) 429-2229 Fax

333 Texas Street, Suite 1919
Shreveport, LA 71101-3676

Reynolds Drilling Company, Inc.

7591 Fern Ave., Suite 2001
Shreveport, Louisiana 71105-5502

Phone: (318) 227-0118

Fax: (318) 227-0171

reydrill@bellsouth.net

Terry Pat Reynolds
President

STROUD PRODUCTION, LLC

333 Texas Street, Suite 860

Shreveport, Louisiana 71101-5302

Voice: (318) 429-2260

Fax: (318) 429 2255

Email: ras@spllc.com



SPANOIL INCORPORATED

416 TRAVIS ST., SUITE 806
SHREVEPORT, LA 71101
VOICE: (318) 221-2371
FAX: (318) 221-2372
anthony@spanoil.com

ANTHONY J. SPANO
PRESIDENT

Abstract

“Climate Change, Peak Demand and the Challenge for the Oil and Gas Industry”

Ray Leonard, Anglo Eurasia LLC

Art Berman, Labyrinth Consulting Services

During the past 150 years, the oil and gas industry has faced and adapted to a wide range of challenges; war, depression, periods of extreme surplus and scarcity, scientific breakthroughs and advances in technology. Now, however, it faces the greatest challenge; how to deal with a changing climate caused in large part by the emission of CO₂ due to the burning of hydrocarbon fuels.

The current atmospheric concentration of CO₂ is at 411 ppm, rising at 2.7-3 ppm/year and by 2050 will be at a level not seen in the past 30 million years. The polar regions are warming at approximately twice the rate of the overall temperature rise. The north polar region has lost 70% of its late summer ice mass since 1980 and will likely be ice free in late summer months within 20 years, altering the climate in the northern hemisphere in ways that we are only now beginning to experience and understand. A realistic objective at this point is to formulate a plan that will limit the ultimate CO₂ level below 700 ppm, limit overall world temperature increase to below 3.2 deg. C and avoid the eventual melting of Antarctic ice sheet, which would cause catastrophic sea level rise.

There is substantial difference in the amount of CO₂ emissions depending on the type of hydrocarbons burned, with the lowest level of emissions coming from combustion of natural gas and ultra-light oils, including natural gas liquids. The oil and natural gas industry has undergone a shift in the past decade, with the largest new source oil produced due to the technical and economic breakthrough of fracking. This technology, actually the “marriage” of fracking and horizontal drilling, often also described as tight oil production, has a number of

distinct characteristics; high decline rates and therefore high capital costs, defined sweet spots of higher productivity, and importantly, the oil produced is virtually all ultralight (lighter than 40 degree API) and natural gas liquids. Natural gas production is also rapidly rising in the USA due to “fracking” of shales and internationally due to many supergiant gas discoveries, mostly offshore, that will likely be transported by liquified natural gas (LNG). This makes feasible a scenario where greenhouse gases emitted by hydrocarbons could plateau over the coming decades and then decline after 2040 if coal production is gradually reduced by 50% in 2020-2040 and an additional 50% by 2060, oil production reaches a peak by 2025 followed by a plateau through 2040 before declining at 1%/year, while continuing the current shift to ultralight production, and gas production increases (by 60% over current levels by 2040) to fill the energy gap. The gas reserves and transportation (pipeline and LNG) solutions are readily achievable. Meanwhile, the renewable+ nuclear share of energy production will need to increase from the present level of 15% to 30% by 2040 and 50% by 2060 so that the overall world energy use can continue to grow at the current rate. These targets can be reached with the impetus of a carbons emission tax calibrated to encourage a shift to use of renewables, nuclear and gas for power generation.

The United States has positioned itself brilliantly for this scenario. Natural gas production is booming, with the greatest increase ever recorded in the past 12 months and set to continue in the coming decade. The USA will soon be a net gas exporter and major LNG supplier. Meanwhile, oil production has doubled within the past 10 years with virtually all the increase ultra-light oil and natural gas liquids, with this trend to continue for the next several years. Greenhouse gas emissions are declining as lower price gas is replacing coal in power generation.

The nations of the world have only begun to address this enveloping crisis, the latest effort consisting of the Paris Climate Accord, an ineffective document with an unrealistic goal (it is unfortunately 20 years too late for a 2-degree target) and no

enforcement mechanism. However, as the situation worsens, the world must finally come to a sensible and workable solution, which is to shift to using the lowest greenhouse gas emitting hydrocarbons for now while supporting development of renewable and nuclear generated energy as quickly as possible. The defining question is how far the climate will need to change, with associated negative impacts, before the necessary consensus is reached to conclude an effective and binding agreement.

- - - - -

Mock Dig

September 29 – October 7

**Sign up now to *play* in the dirt
and *inspire* future geologists
at this year's Red River Revel!**



Co-chair and other volunteers are needed.

Please contact Carrie Salinas:
csalinas@virtusenvironmental.com



MILESTONE ENERGY, LLC

Oil & Gas Exploration and Development

Joseph A. Lott

Geologist / Managing Partner

Zach Kelly
Geologist

Zach McDonald
Geologist

Thomas A. Giles
Land Manager

333 Texas Street, Suite 516
Shreveport, Louisiana 71101
jlott100@bellsouth.net

Office: 318.212.0470
Fax: 318.212.0469

- Looking for Prospects
- Geophysical Consultant
- Landmark Graphics Corp. Software
- Synthetic Seismograms, modeling and cross sections



- Digitizing capability
- 2-D & 3-D Seismic Acquisition, Processing & Interpretation
- SeisVision 2-D & 3-D interpretation and mapping software

Bobbie Ben Taylor - President

O: 120 S Broadway, Suite 102
Tyler, Texas 75702
Mobile: (903) 521-3182

H: 7130 Holly Square Court
Tyler, Texas 75703
Email: taylor@webfoxmail.com

LOOKING FOR PROSPECTS

Let me tailor your geophysical needs.

HALLIBURTON

Do you require an integrated approach to total well construction, formation evaluation, and optimized production? Make the jump to our team. We have the best local people for designing your well, preforming state of the art formation evaluation, and planning and executing your completion.

Logging & Perforating
Production Enhancement (Stimulation)
Cementing
Security Bits
Tools, Packers, & TCP
Coli Tubing Services

Shreveport Sales 318-673-4400
Tyler sales 903-581-5263
Kilgore Operations 1-800-654-6926



GeoGraphix

www.lmkr.com



Mark Mixon
Account Manager

mmixon@lmkr.com
P: +1 281 495 5657
D: +1 281 848 3310
C: +1 713 419 8918
F: +1 281 879 0135

LMK Resources Inc.
6051 North Course Drive, Suite 300,
Houston, TX 77072, USA

Kingwood Exploration, LLC
Oil & Gas Exploration
and Production



Kurt M. Ley

Exploration Manager & Partner

Robert E. Braswell

Engineering/Operations Manager & Partner

416 Travis St., Suite 1100
Shreveport, LA 71101

Phone: 318-946-8585

Fax: 318-946-8287

kurt.ley@kingwoodexploration.com
robert.braswell@kingwoodexploration.com



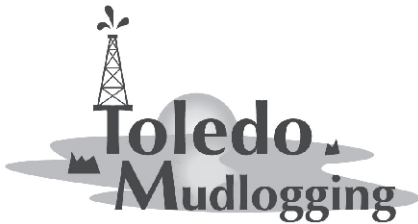
Established by G.M. Anderson

333 TEXAS ST., SUITE 2020

SHREVEPORT, LA 71101-5357

Phone: (318) 227-2000

Fax: (318) 425-5935



★ Milam, TX

★ Many, LA

The Horizontal Specialists!!

We work with the greatest companies
in the world, please give us a call
to see what we can do for you!!

Joe Eidson 318-623-5077

Michael Danos 318-332-7673

P. O. Box 1209, Many, LA 71449

Security Exploration, Inc.

8509 Line Avenue
Shreveport, LA 71106



J. Stafford Comegys
President

Donna Walker
Geologist

Barbara Lyles
Office Manager

OIL & GAS EXPLORATION

Tel: (318) 222-1066

Fax: (318) 222-4932

From the Archives

By Annie Green

As recorded in the 1953 SGS President's Book

**GULF COAST ASSOCIATION OF GEOLOGICAL SOCIETIES
Third Annual Meeting
Shreveport, Louisiana
October 22, 23, and 24, 1953
Washington-Youree Hotel - Captain Shreve Hotel**

Registration tables will be located in the Zephyr Room of the Washington-Youree Hotel. All members of the Shreveport Geological Society are requested to register as early as possible on Wednesday, October 21. By doing so the congestion at the registration tables will be relieved by the time out-of-town registrants arrive.

THURSDAY MORNING PROGRAM

Members of Steering Committee will preside at all sessions
of the Convention.

Host City ----- Mayor Clyde Fant
Welcome ----- M.W. Beckham
Response ----- R.T. Wade
Presentation of AAPG Officers and Candidates
Address ----- "More Oil" ----- C.L. Moody
Address ----- J.B. Hussey

TECHNICAL PROGRAM

CRYSTAL BALLROOM

WASHINGTON-YOUREE HOTEL

Thursday, Oct. 22 8:00 A.M. - Saturday, Oct 24 11:30 A.M.

SATURDAY MORNING, OCTOBER 24, 1953

The Shreveport Geological Society in conjunction with the GCAGS will conduct a field trip Saturday and Sunday, October 24 and 25, 1953. A study will be made on the outcrops of the Upper Cretaceous and Paleozoics in Southern Arkansas. Registration will be accepted along with the convention registration in the Zephyr Room of the Washington-Youree Hotel. Field trip buses will leave at 6:30 Saturday morning from the Travis Street entrance of the Washington-Youree and from the Trailways Bus Center, where reservations will have been made by the Field Trip Committee. The trip will terminate in Shreveport Sunday evening.

THE PETROLEUM CLUB OF SHREVEPORT

Serving delectable cuisine to the
Shreveport Geological Society
regular luncheon meetings.

318-425-4251



David Meadows
Manager

Mid South Tower Bldg.
416 Travis Street, Suite 1414
Shreveport, LA 71101

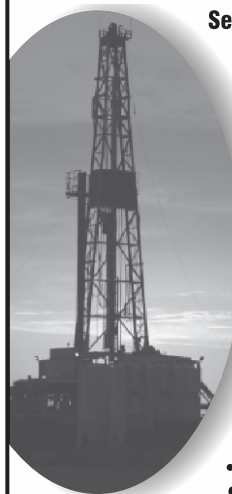
Phone: 318-425-7617
Fax: 318-425-1385
Email: jmexploration@comcast.net

BRAMMER ENGINEERING, INC.

Services:

- Drilling
- Completion
- Construction
- Production
- HSE
- Regulatory
- Land
- Accounting
- Risk
- Information Systems

Management



www.brammer.com
318.429.2345 o • 318.429.2340 f
400 Texas Street • Suite 600 • Shreveport, LA 71101

WLS CORPORATION

**OIL & GAS
EXPLORATION & PRODUCTION**

Wayne L. Simpson
President

Philip Davis
Geologist

416 Travis Street, Suite 1006
Shreveport, Louisiana 71101

Office: (318) 425-2978
Fax: (318) 425-3166

OCTOBER 22, 23, and 24, 1953
COVVENTION SOCIAL ACTIVITIES

Thursday Evening – 6:30-8:00 P.M.

Cocktail Party, Crystal Ballroom, Washington-Youree Hotel. Invitations for admittance will be issued to all registered delegates and wives.

Friday Night - 9:00 P.M. – 1:00 A.M.

'Semi-Formal Dance'. Crystal Ballroom and Petroleum Club, Washington-Youree Hotel. Hal McIntyre orchestra. Drinks gratis. Invitation for admittance will be issued to all registered delegates and wives.

**The Shreveport Geological Auxiliary
has planned the following entertainment for the ladies
visiting the third annual meeting of the G.C.A.G.S.**

Registration – Zephyr Room – Washington-Youree Hotel. Registration will be open Wednesday, October 21. Registrations will be made upon arrival. Tickets to be purchased at time of registration.

Coffee Room – Second Floor Foyer Captain Shreve Hotel – compliments Schlumberger

Coffee served on Wednesday afternoon from 1:00 to 5:00 P.M. and Thursday and Friday from 9:30A.M. to 5:00 P.M.

Meet and visit with your friends in the Coffee Room

Luncheon – Thursday, October 22 at 1:00 P.M., Banquet Room, Captain Shreve Hotel

Continental – Friday, October 23, serving continuously from 11:30 A.M. until 1:30 P.M. Florentine Club

Special bus service available from north entrance of Captain Shreve Hotel

Got a question or idea for “From the Archives”?
Email Annie Green at agreen@naguss.com.



Shreveport Petroleum Data Assn., Inc.

333 Texas Street, Suite 900

Shreveport, LA 71101

(318) 429-2237

Fax (318) 429-2441

Website : www.spdalogs.org

spda@spdalogs.org

**Cindy Shepherd
Manager**



FRANKS
EXPLORATION COMPANY, LLC

Bobby E. Jelks
President

Faith N. Gilbert
CFO

P. O. Box 7665
Shreveport, LA 71135-7665

Phone: (318) 221-2688

Fax: (318) 459-2935

Edward Yarborough
Exploration Manager

James Light
Land Manager



GEOVENTURES™

Ashley Garcia

Assistant Program Manager

Main +1 713 789 7250

Direct +1 281 781 1005

Fax +1 713 789 7201

Mobile +1 281 239 4576

ashley.garcia@iongeo.com

2105 City West Blvd., Ste. 900

Houston, TX 77042-2837 USA iongeo.com



JOHNSON
ENERGY RESOURCES, LLC

L. CHRIS JOHNSON
Manager

2650 Fairfield Ave
Shreveport, LA 71104
BUS: (318) 222-6652
FAX: (318) 222-6673
cjohnson@jerlic.com

GRIGSBY PETROLEUM, INC.

**Oil & Gas Exploration
and Production**

333 Texas St., Suite 2285
Shreveport, LA 71101
Phone (318) 425-5306
Fax (318) 425-3733

Office Phone
(318) 222-7123

Residence Phone
(318) 925-2348

David L. Billingsley, Jr.
Certified Petroleum Geologist

400 Travis Street, Suite 1230
Shreveport, LA 71101
DLBJR1@aol.com

Cell Phone
(318) 426-4320



DONNER PROPERTIES, LLC

OIL AND GAS

DIANA L. CHANCE
MANAGING DIRECTOR

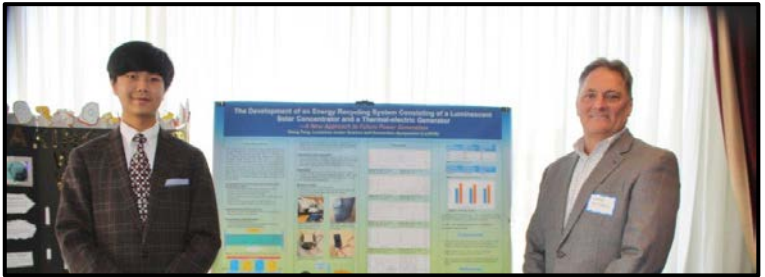
P. O. Box 1346 SHREVEPORT, LA 71164
(318) 227-2131 • FAX: (318) 222-5832
CELL: (318) 347-8848

WWW.DONNERPROPERTIES.COM

May Meeting

Photos courtesy of Brenda Pender

At the May Meeting, Scott McQuown presented “Basic Image Log Interpretation & Applications to Define Reservoir Geometry.” Science Fair winners and their families were invited to attend and discuss their projects with SGS members after the talk. Special thanks to O’Brien Energy for sponsoring student seats at the May meeting.





LOUISIANA BOARD OF PROFESSIONAL GEOSCIENTISTS

Geoscientist Licensing in Louisiana

Did you know?

When you attend a monthly Shreveport Geological Society meeting, you earn one hour of continuing education credit for your LBOPG license. This is a simple and enjoyable way to get your hours! You can also find links to continuing education ethics credit courses at <https://sgs1.org/continuing-education/>.

Ready to track your CE hours?

Visit the LBOPG website today to download your continuing education log template

lbopg.org/resources/continuing-education

	A	B	C	D	E	F	G	H	I	J	K	L	
1	Name:					PG License #:		Renewal Date:					
2													
3	Date	Code*	Activity			Instructor	Sponsor Organization			Credits			
4			Title				Name	Location		Time	CEU	PDH	
5													
6													
7													
8													
9													
10													
11													
12													
13													
14													
15													
16													
17													
18													
19													
20													
21											Total PDH claimed this renewal period:		0
22											PDH carry over from previous year claimed for this report:		
23											Total PDH claimed to meet minimum requirements:		0
24											PDH to be carried over to next year's report:		
25													
26	Audits will be conducted randomly and/or as needed to confirm CE activities each year.												
27	It is your responsibility to collect and maintain proof of attendance and completion of CE activities in case an audit is called.												
28	*Code		Conversion of =	PDH		Minimum hrs. to renew	Maximum hrs. Allowed/Period						
29	Participant Credit	P	Each Direct Hour =	1		14 Geoscience Credits	Society Meetings						12
30	Instructor Credit	I	CEU, Papers, etc. =	10		1 Ethics Credits	Self directed Coursework						5
31	Authorship Credit	A	College Qtr. Hr. =	10		15 Total	Authorship - Paper						10
32	Meeting Credit	M	Semester Hour =	15			Authorship - Book						45
33	Ethics Credit	E	Instructor =	3XPDH									
34													
35	This form was intended to be a one (1) letter size page, i.e. one (1) years record of CE activity or 15 PDH.												
36	It is recommended that additional data be entered into a second (or third, etc.) worksheet in this spread sheet workbook.												
37	An entire (blank) form can then be copied into the new worksheet and the sheet tab named as the report year.												
38	This workbook has two (2) new sheets included as examples so you can start the process of recording your CE activity.												
39													

Monthly Permits - July 2018

Provided by ABCD GIS Mapping

Texas Permits

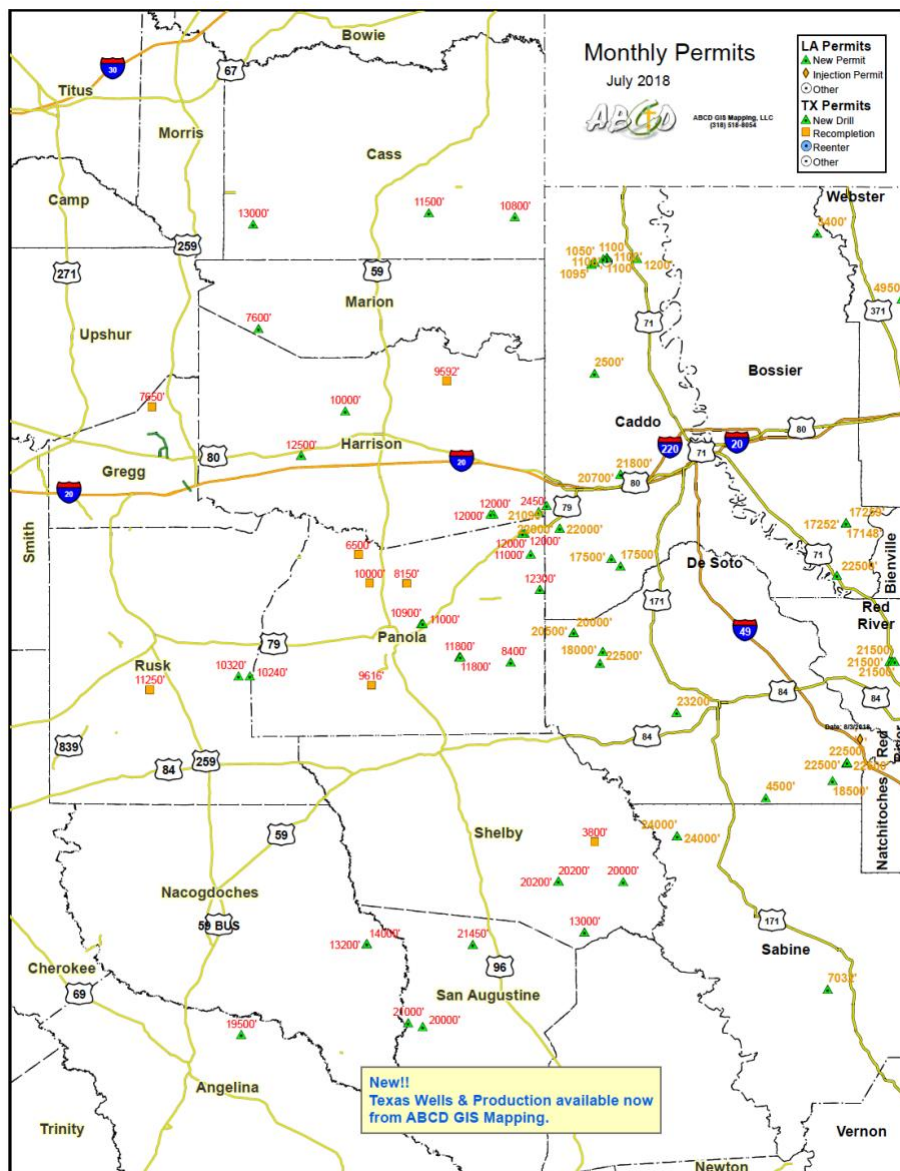
AppDate	API	Operator	County	Purpose
7/3/18	00530428	BP AMERICA PRODUCTION COMPANY (040798)	ANGELINA	New Drill
7/11/18	06730814	STETSON PETROLEUM CORP. (819479)	CASS	New Drill
7/6/18	18331202	DALLAS PRODUCTION, INC. (197690)	GREGG	Recompletion
7/12/18	20335313	HOPEWELL OPERATING, INC. (399624)	HARRISON	New Drill
7/3/18	31531051	BROOKS PETROLEUM COMPANY (097323)	MARION	New Drill
7/2/18	36530684	SHERIDAN PRODUCTION COMPANY, LLC (775854)	PANOLA	Recompletion
7/2/18	36538433	ROCKCLIFF ENERGY OPERATING LLC (722890)	PANOLA	New Drill
7/5/18	36538435	ROCKCLIFF ENERGY OPERATING LLC (722890)	PANOLA	New Drill
7/6/18	36538436	CCI EAST TEXAS UPSTREAM LLC (120023)	PANOLA	New Drill
7/6/18	36538437	CCI EAST TEXAS UPSTREAM LLC (120023)	PANOLA	New Drill
7/10/18	36538438	COVEY PARK RESOURCES LLC (182848)	PANOLA	New Drill
7/10/18	36538439	COVEY PARK RESOURCES LLC (182848)	PANOLA	New Drill
7/12/18	36538440	SABINE OIL & GAS CORPORATION (742143)	PANOLA	New Drill
7/9/18	40530598	XTO ENERGY INC. (945936)	SAN AUGUSTINE	New Drill
7/11/18	41930322	AMERICAN OPERATING COMPANY (A) (018874)	SHELBY	Recompletion
7/2/18	41931798	XTO ENERGY INC. (945936)	SHELBY	New Drill
7/6/18	41931799	XTO ENERGY INC. (945936)	SHELBY	New Drill
7/16/18	34733379	AETHON ENERGY OPERATING LLC(008555)	NACOGDOCHES	New Drill
7/16/18	40135416	KJ ENERGY, LLC(469901)	RUSK	New Drill
7/16/18	34733380	AETHON ENERGY OPERATING LLC(008555)	NACOGDOCHES	New Drill
7/16/18	36538441	ROUNDROCK MIDSTREAM LLC(730112)	PANOLA	New Drill
7/17/18	40530675	XTO ENERGY INC. (945936)	SAN AUGUSTINE	New Drill
7/19/18	20334570	PETRO-CHEM OPERATING COMPANY,INC (660001)	HARRISON	Recompletion
7/19/18	36535632	CRD OPERATING, LLC (186953)	PANOLA	Recompletion
7/19/18	20335314	NEW CENTURY EXPLORATION, INC. (606055)	HARRISON	New Drill
7/19/18	41931777	XTO ENERGY INC. (945936)	SHELBY	New Drill
7/24/18	06730815	BARROW-SHAVER RESOURCES CO. (053321)	CASS	New Drill
7/24/18	20335310	SABINE OIL & GAS CORPORATION (742143)	HARRISON	New Drill
7/20/18	36538356	CHEVRON U. S. A. INC. (148113)	PANOLA	New Drill
7/20/18	36538378	ROCKCLIFF ENERGY OPERATING LLC (722890)	PANOLA	New Drill
7/20/18	36538380	ROCKCLIFF ENERGY OPERATING LLC (722890)	PANOLA	New Drill
7/24/18	40134611	TRIVIUM OPERATING, LLC (871168)	RUSK	Recompletion
7/20/18	40530631	XTO ENERGY INC. (945936)	SAN AUGUSTINE	New Drill
7/20/18	41931792	XTO ENERGY INC. (945936)	SHELBY	New Drill
7/26/18	36531171	R. LACY SERVICES, LTD. (687208)	PANOLA	Recompletion
7/30/18	06730813	O'BENCO, INC. (617512)	CASS	New Drill
7/30/18	40135415	KJ ENERGY, LLC (469901)	RUSK	New Drill
7/30/18	36532922	R. LACY SERVICES, LTD. (687208)	PANOLA	Recompletion

See map and Louisiana Permits on following pages.

Monthly Permits - July 2018

Provided by ABCD GIS Mapping

Map



See Louisiana Permits listed on following page.

Monthly Permits - July 2018

Provided by ABCD GIS Mapping

Louisiana Permits

County	Status	WellSN	WellName	PermitDate	Depth
BOSSIER	01	251155	HA RA SU91;JESTMA LLC 14-23 HC	7/12/18	17259
BOSSIER	01	251156	HA RA SU91;JESTMA LLC 14-23 HC	7/12/18	17148
BOSSIER	01	251157	HA RA SU91;JESTMA LLC 14-23 HC	7/12/18	17252
CADDO	01	251119	HA RA SUI;GLORIAS RANCH 10	7/2/18	17500
CADDO	01	251120	HA RA SUG;MUSLOW OG 4	7/2/18	17500
CADDO	01	251121	HA RA SU64; JACKSON 21-28 HC	7/2/18	22000
CADDO	01	251122	HA RA SU64;JACKSON 21-28 HC	7/2/18	22000
CADDO	01	251137	SORTORS	7/3/18	1095
CADDO	01	251141	ANKERSON	7/6/18	1100
CADDO	01	251142	ANKERSON	7/6/18	1100
CADDO	01	251143	ANKERSON	7/6/18	1100
CADDO	01	251153	CALDWELL D	7/12/18	1050
CADDO	01	251154	R C CALDWELL	7/12/18	1100
CADDO	80	990488	JOLLEY	7/6/18	0
DE SOTO	01	251128	RICHARDSON 18-7 H	7/3/18	22500
DE SOTO	01	251130	HA RA SUL;HESSER 23&14-11-11HC	7/3/18	22500
DE SOTO	01	251131	HA RA SUL;HESSER 23&14-11-11HC	7/3/18	22500
DE SOTO	01	251132	HA RA SUL;HESSER 23&14-11-11HC	7/3/18	22500
DE SOTO	01	251133	HA RA SUL;HESSER 23&14-11-11HC	7/3/18	22500
DE SOTO	01	251134	HA RA SU66;A LOFTUS 27&34 HC	7/3/18	20000
DE SOTO	01	251135	HA RA SU66;A LOFTUS 27&22 HC	7/3/18	20500
DE SOTO	02	975361	RRBB LITTON RA SU;PERRY POINT	7/2/18	0
DE SOTO	02	975362	RRBB LITTON RA SU;PERRY POINT	7/2/18	0
DE SOTO	02	975363	RRBB LITTON RA SU;PERRY POINT	7/2/18	0
RED RIVER	01	251123	JUR RA SUA;MARTIN TIMB 10-3 HC	7/2/18	19000
RED RIVER	01	251124	JUR RA SUA;MARTIN TIMB 10-3 HC	7/2/18	21500
RED RIVER	01	251125	JUR RA SUA;MARTIN TIMB 10-3 HC	7/2/18	21500
RED RIVER	01	251126	JUR RA SUA;MARTIN TIMB 10-3 HC	7/2/18	21500
RED RIVER	01	251127	JUR RA SUA;MARTIN TIMB 10-3 HC	7/2/18	21500
SABINE	01	251139	OLYMPIA MINERALS	7/3/18	7032
BOSSIER	01	251159	HA RA SUT;POOLE ANT 22-35-34HC	7/17/18	22500
CADDO	01	251167	HOSS-KENDRICK	7/18/18	1200
DE SOTO	01	251160	HA RA SURR;HELEN BUTLER 3 H	7/18/18	18500
DE SOTO	01	251161	NABORS-LOGAN	7/18/18	4500
DE SOTO	01	251166	HA RA SUE;BLACKSTONE 15-10 HC	7/18/18	23200
SABINE	01	251169	MCDONLD 10&15-9-14 H	7/19/18	24000
SABINE	01	251170	MCDONLD 10&15-9-14 H	7/19/18	24000
WEBSTER	01	251173	ROD RA SUP;DAVIS	7/23/18	4950
CADDO	01	251181	HA RA SUZ;PINEHILLS 10-3 HC	7/30/18	21800
CADDO	01	251182	HA RA SUY;PINEHILLS 9-4 HC	7/30/18	20700
CADDO	01	251183	CCMP LLC 1	7/30/18	2500
BOSSIER	01	251184	BOLINGER MINERALS	7/31/18	3400
CADDO	01	251188	HA RA SU113;ATKINS ETAL 6-7 HC	7/31/18	21090
DE SOTO	01	251186	HA RB SU59;JAKSN 8-13-15 H	7/31/18	18000

See Map and Texas Permits listed on previous pages.



25th ANNUAL ALTAPL-SGS GOLF TOURNAMENT

P.O. Box 6149
Shreveport, LA 71136

2018 Tournament Committee

Jeremy Harris
318-220-7693

Scott Comegys
318-436-3689

Cody Lenert
318-455-2962

Matt May
318-227-7850

Joseph Collier
318-564-2015

Travis Hart
318-465-8130

Josh Rambo
318-470-2350

Pedro Pizarro
319-470-3564

Email us at
the.altapl@gmail.com

It's that time of the year again to announce the upcoming **SGS/ALTAPL Golf Tournament** to be held at **East Ridge Country Club** on **Friday, September 7, 2018**. The event will proceed with shotgun starts at 7:30 a.m. and 1:00 p.m. followed by an evening of food and door prizes made possible by your sponsorship donations.

With this in mind, please consider and respond as soon as possible with your much appreciated sponsorship, so a realistic budget can be proposed by our planning committee. A prompt response will also assure that your contribution will be affirmed and recognized by all in attendance. All sponsors will be included on a banner which will be displayed at check-in and at the awards reception.

We look forward to your involvement not only in sponsorship, but also in the camaraderie of the golf tournament. If you have any questions please call us at the numbers listed or email us at the.altapl@gmail.com.

The golf entry fee includes green fees, golf cart, golf apparel, breakfast (morning flight), hamburger bar lunch, hors d'oeuvre' dinner, beverages, door prizes and the important Mulligans. The Social Fee includes dinner, beverages, door prizes and entertainment. **The social fee must be paid ahead of time as no money will be collected at the door.*

The golf tournament will be a flighted four man scramble. Assemble your foursome with all handicaps as well as **contact phone number, email address and *SHIRT SIZE*. A handicap *MUST* be listed for each member of your foursome in order to properly flight the teams.** Prizes will be rewarded for flight winners, hole-in-ones, closest to the hole on all par threes and winner of the long drive contest.

Due to the overwhelming popularity of this annual event, the tournament will be held for society members and guests only. **Please make sure your SGS & ALTAPL dues are current and please make sure team payment is made accordingly!** The **deadline** for entering will be **Friday, August 24, 2018** and will be limited to a first come first served basis. **Tee times** will also be granted on a first come first served basis with the first forms received getting the PM shotgun (unless AM noted) until it is full. Once the PM flight is filled, the remaining teams will be placed in the AM flight. Please circle your preference of AM/PM on the bottom of the [entry form](#).

Sincerely,
Your 2018 Tournament Committee





JON E. SAYE

PETROLEUM GEOLOGIST

Office: 318-221-4504

Fax: 318-221-4516

Cell: 318-458-1515

1015 Mid South Twr. • P. O. Box 137

Shreveport, LA 71161

jsaye@prodigy.net

COUTRET & ASSOC., INC.

Petroleum Reservoir Engineers

Property Evaluation, Reservoir Engineering
Fluid Injection, Property Management

Louisiana Tower
401 Edwards Street
Shreveport, LA 71101

Telephone: (318) 221-0482

Fax: (318) 221-3202

E-mail: rmcgowen@coutret.com



GEOVENTURES™

Alvin Rowbatham
Sales Manager

Main +1 713 789 7250

Direct +1 281 781 1005

Fax +1 713 789 7201

Mobile +1 832 372 2366

alvin.rowbatham@iongeo.com

2105 City West Blvd., Ste. 900

Houston, TX 77042-2837 USA iongeo.com



Delta-T
Geophysical
Consulting, Inc.

Comprehensive Geophysical Services

- Kingdom Suite 2d/3d pak
- Geographix
- GMA
- Neuralog
- Mesa 3-D Design
- Digirule

Woodie Huffman, CEO

401 Edwards Street, Suite 826
Shreveport, LA 71101-5510

Phone: (318) 221-0414

Fax: (318) 425-0688

Email: delta@bellsouth.net

Williamson

OIL & GAS, INC.

Oil & Gas Development



Office: (318) 221-2923

Fax: (318) 221-3488

Email: bob@williamsonogi.com

400 Travis Street

Suite 1410

Shreveport, LA 71101

Joe R. White, Jr.

Petroleum Geologist

8505 Dogwood Trail

Haughton, LA 71037

Cell. 318-423-9828

Hm. 318-949-3539

Available for Consulting

AAPG CPG #5580

MS RPG #0097

LA CPG #345

Jwhite1362@aol.com

Joerjrw@gmail.com

Cowgill & Associates, L.L.C.

Oil & Gas Exploration & Production

Stephen C. Cowgill
Geologist/Managing Partner

P. O. Box 72180

Bossier City, LA 71172-2180

cowgill@suddenlink.net

Office: 318.429.2170

Fax: 318.429.1170

Cell: 318.455.9516

CSC ENERGY CORP.

OIL & GAS EXPLORATION

Joel B. Chevalier
PRESIDENT

401 Edwards Street

Suite 820

Shreveport, Louisiana 71101

Office: (318) 221-5625 • Fax: (318) 459-1650

Mobile: (318) 469-5625



2018

Gulf Coast Association
Of Geological Sciences

Tennis Tournament
Sunday September 30
Pierremont Oaks Tennis Club
578 Spring Lake Drive
Shreveport, LA

Dust those tennis racquets off and come out and enjoy some fun and exercise at the 2018 GCAGS Tennis Tournament being held at Pierremont Oaks Tennis Club, the premier tennis facility in Shreveport. The event will be held on Sunday September 30, beginning at 9:00am, with play ending at approximately 3:00pm. It will be a round robin doubles event played on clay courts. Prizes will be awarded for 1st – 3rd place in two divisions, along with door prizes. The cost for the event will be \$40.00 which includes court fees and balls, a continental breakfast and a burger / chicken lunch with all the trimmings, plus all liquid refreshments. Transportation will be provided from the Convention Center to the club and back. Sign up with a partner or let us pair you up.

BER-EX-CO., INC.

Orville Roger Berg, Ph.D.

Exploration, Exploitation
Seismic Evaluation
Domestic, International

400 Travis St., Suite 1612
Shreveport, LA 71101-3108
(318) 220-0300
orberg@bellsouth.net

9949 Beaver Creek Drive
Shreveport, LA 71106
(318) 798-1748

GERARD ASSOCIATES, L.C.

OIL & GAS EXPLORATION
DEVELOPMENT AND ACQUISITIONS

J. A. Wojtkiewicz • Charles Gerard

625 Market St., Suite 250
Shreveport, LA 71101
Tel. (318) 221-0761 • FAX (318) 221-8835

ODEN & ASSOCIATES, LLC



Oil and Gas Exploration

Alan Schlichtemier
Geologist

Email: oden@shreve.net

400 Travis St., Ste. 1301
Shreveport, LA 71101

(318) 222-2400
Fax: (318) 226-0840



Kalmbach
Production Company, LLC

Sam Kalmbach
Geologist

400 Travis Street, Ste. 516
Shreveport, LA 71101

office: (318) 424-6566
cell (318) 470-9977

e-mail: sam.geo.kpc@gmail.com

BARROW-SHAVER RESOURCES COMPANY

Oil & Gas Exploration & Development

Scott Owen Shaver

Managing Partner and Exploration Manager

903-593-5221 Office
903-593-1692 Fax
903-561-4711 Home
903-582-4711 Farm
903-245-4999 Mobile

977 Pruitt Place
Tyler, Texas 75703
sos-bsr@tyler.net



Drilling Contractor
Oil & Gas Operator
Turnkey Services
Well Service & Workover
Working Interest Participant

318-992-4111

P. O. Box 2990, Jena, LA 71342
justissoil.com

TIM H. MARSHALL DIRCK E. WUELLNER

MARSHALL-WUELLNER, INC.

Petroleum Geologists

AmSouth Tower
333 Texas St., Suite 608
Shreveport, LA 71101-3671
Office: (318) 429-2250
Fax: (318) 429-2251

Mike Rogers Drilling Co., Inc.

Drilling & Interest Participation

MIKE ROGERS, PRESIDENT
CRAIG ROGERS, VICE PRESIDENT

Office: 870-234-2356 • Fax: 870-234-7487

1708 N. Vine Street • P. O. Box 126 • Magnolia, AR 71754
email: mrdc1981@gmail.com

Gulf Coast Association of Geological Societies
and Gulf Coast Section of SEPM

68th Annual Convention

September 30–October 2, 2018—Shreveport, Louisiana

ANNOUNCEMENT

ENERGY!



Ready for another round.



QR Code Link to
Convention Website

Spread the news!
Please share with your colleagues!

REGISTER NOW AT:

www.gcags2018.org

Hosted by the Shreveport Geological Society

**Pre-Registration
Discount
Deadline:**

September 7th



Craig C. Barclay
Petroleum Geologist, L.L.C.

522 Dumbarton
Shreveport, LA 71106

Phone: (318) 869-2223
Mobile: (318) 426-2536
cbarclay1@comcast.net

Wireline Services

Weatherford International, Ltd.
1101 ESE Loop, 323, Ste. 200
Tyler, Texas 75701, USA



Weatherford

Richard 'Dick' Swindell

Technical Sales Advisor
Wireline & Borehole Seismic

Direct: +1.903.594.4926

Main: +1.903.534.5243

Fax: +1.903.939.8907

Mobile: +1.903.530.4016

richard.swindell@weatherford.com

www.weatherford.com

T. W. McGuire & Associates, Inc.

Registered Petroleum Engineers

416 Travis St., Suite 1400
P. O. Box 1763
Shreveport, LA 71166
(318) 222-0761
(318) 222-0799 Fax

James T. Maranto Robert T. Maranto

**BAKER
HUGHES**
a GE company



Jim Hankla

Sales
Southern US

M +1 903 312 8500

james.hankla@bhge.com



416 TRAVIS STREET ♦ SUITE 600
SHREVEPORT, LA 71101
PHONE ♦ (318) 425-0101
FAX ♦ (318) 425-2211

MORRIS NICHOLS
GARY ABRAMS
JOHN STROUD
GEOLOGISTS



Joseph H. McDuff
Geologist

351 Chapel Loop
Mandeville, LA 70471
985.845.9430
jmcduff@bellsouth.net

2018 GCAGS/GCSSEPM 68th Annual Convention & Exhibition



Welcome

The Shreveport Geological Society is proud to host the 68th Annual Convention of the Gulf Coast Association of Geological Societies and the Gulf Coast Section of the Society of Economic Paleontologists and Mineralogists. Join us in Shreveport, Louisiana, September 30–October 2, 2018.

The Exhibition

The **Exhibit Hall** will be the host area for a number of events, there will be plenty of opportunities to explore all that the exhibitors have to offer, see old acquaintances, and forge new ones.

- The traditional Icebreaker cocktail party held on Sunday in the Exhibit Hall;
- The President's Reception will be held in the Hall from 4:30 pm to 6:00 pm on Monday; and
- Breakfast items and extended breaks in the morning and afternoon oral sessions will permit in-depth discussions with the poster presenters.

Show hours are:

Sunday, 30 Sept. (Icebreaker)..... 6:00 pm–8:00 pm
Monday, 1 October 8:30 am–6:00 pm
Tuesday, 2 October 8:30 am–1:00 pm

INTERESTED IN EXHIBITING?

Space is still available! For more information, please visit www.gcags2018.org or contact Bruce Lemmon at bruce@gemworldvents.net or (918) 585-1004.

SPONSORSHIP OPPORTUNITIES

Sponsoring the 2018 GCAGS-GCSSEPM Annual Convention is the ideal way to enhance your organization's visibility among Gulf Coast geoscientists and their companies and help make this professional meeting possible. Please contact Daryl Fultz at daryl@willdrill.com for more info.

REGISTRATION

REGISTER NOW at www.gcags2018.com

GCAGS/GCSSEPM Professional (Early Bird through Sept. 7).....	\$325
GCAGS/GCSSEPM Professional (after Sept. 7)	\$400
Prospect / Deal Room Expo	\$500
Non-Member Professional (Early Bird through Sept. 7).....	\$375
Non-Member Professional (after Sept. 7)	\$450
Student (ID required on site).....	\$45
Student Volunteer (ID required on site)	\$45*
*Student volunteers completing work assignment will be refunded their registration fee.	
Icebreaker ONLY (Sunday, Sept. 30).....	\$75
Exhibit Hall ONLY	\$90

Technical Program

Monday Morning: October 1

- Regional Geological Studies and Depositional Facies Analysis, Part I – 6 talks
- Deepwater Gulf of Mexico – 4 talks
- Seismic Attributes and Modern Geophysical Technology – 5 talks
- Poster Session 1 – 16 posters

Monday Afternoon: October 1

- Climate Change: Current Thinking and Assessment – 7 Talks
- Regional Geological Studies and Depositional Facies Analysis, Part II – 6 Talks
- Advanced Studies in Geology – 5 Talks
- Poster Session 2 – 15 posters

Tuesday Morning: October 2

- Lower Cotton Valley–Bossier: Jurassic Gulf Coast Reservoirs – 5 Talks
- Regional Geological Studies and Depositional Facies Analysis, Part III – 7 Talks
- Ground Water and Environmental Studies, Part I – 4 Talks
- Poster Session 3 – 14 posters

Tuesday Afternoon: October 2

- Geology and History – 5 talks
- Ground Water and Environmental Studies, Part II – 4 Talks
- **Special Session** – Shale Resource Plays: 10 Years Later – 8 Talks

Note: Please visit www.gcags2018.org for a complete schedule listing including talk/poster titles, speakers, and timings.

CAPLIS FORESTRY, LLC
JEFFREY W. CAPLIS
-CONSULTING FORESTER-

CELL: 318-617-9016
OFFICE: 318-752-3662
586 CAPLIS SLIGO RD.
BOSSIER CITY, LA 71112

-complete forestry services-

- Timber Appraisals • Timber Management • Timber Cruising •
- Damage Appraisals • Tree Planting •

B.S. LOUISIANA TECH: SCHOOL OF FORESTRY



Thomas C. Wyche

CERTIFIED PETROLEUM GEOLOGIST

Horizontal & Vertical Projects
E.Tx., N.La., S.Ark.

333 Texas St., Suite 703
Shreveport, LA 71101
318.465.2944
geo1tcw@gmail.com

LA-PG
AAPG-CPG

Like what you see?

Fill out and mail in this form or find it online at SGS1.org.

You can renew online instead
of filling out this card!

★ www.sgs1.org ★

Active \$25 / yr	
Associate \$25 / yr	
Honorary \$0 / yr	
Student \$5 / yr	
Optional Donation SGS Scholarship Fund	
Optional Donation Faithful Friends	
Total Payment	

NAME (Please Print) _____

☐ Check if new applicant or change of address.

SHREVEPORT GEOLOGICAL SOCIETY, P.O. BOX 750 • SHREVEPORT, LA 71162

DATE _____

APPLICANT OR MEMBER PLEASE TYPE OR PRINT

LAST NAME	FIRST	INITIAL	NICKNAME	
COMPANY		POSITION OR TITLE		
COMPANY MAILING ADDRESS		CITY	STATE	ZIP
HOME ADDRESS		CITY	STATE	ZIP
FAX NUMBER		E-MAIL ADDRESS		CELL PHONE
SCHOOL	DEGREE	MAJOR	YEAR	
PROFESSIONAL AFFILIATIONS	AAPG <input type="checkbox"/> APGS <input type="checkbox"/>	GSA <input type="checkbox"/> PS <input type="checkbox"/>	SEG <input type="checkbox"/> AGI <input type="checkbox"/>	SEPM <input type="checkbox"/> SIPES <input type="checkbox"/>
			AIME <input type="checkbox"/> SPE <input type="checkbox"/>	SPWLA <input type="checkbox"/> OTHER <input type="checkbox"/>

OUTLINE OF EXPERIENCE _____

SPOUSE'S NAME _____

PREFERRED MAILING ADDRESS
☐ HOME ☐ BUSINESS
☐ EMAIL ME THE NEWSLETTER
(no printed copy will be mailed)

QUALIFICATIONS FROM BY-LAWS

In order to be eligible for active membership, an applicant shall be engaged in the practice or teaching of geology or related sciences.

In order to be an associate member, an applicant shall be interested in geological science but not actively engaged in the practice or teaching of geology or related sciences.

TO THE EXECUTIVE BOARD:

I hereby apply for ☐ ACTIVE ☐ ASSOCIATE membership in SHREVEPORT GEOLOGICAL SOCIETY and pledge myself to abide by its Constitution and By-laws.

Date: _____ Signature: _____

SPACE BELOW TO BE USED FOR PROCESSING ONLY

Membership Committee

Received: _____

Approved for: ☐ Active
☐ Associate
☐ Student

Executive Board

Approved: _____

SECRETARY

Date: _____

ENERGY! Ready for Another Round.

Shreveport, Louisiana • Sept. 30–Oct. 2, 2018

Prospect Sessions

Prospect Generators have asked for a more economical and efficient prospect review process – this is it!

Highlights and Benefits

- 16 oral prospect / project presentations for 20 minutes each
- Booths for each presenter allows for discussions following presentations
- Presentation and booth provided for one low fee of \$500 each!
- No publication paper required, only a short title and abstract for program
- Show your prospect or project once to an audience from your region!
- Prospect screeners can have a clear review from the comfort of your seat!
- Presenter and screener have follow up for only those projects that are of interest!

How Do I Sign Up?

- Sign up at www.gcags2018.org before Aug. 15.
- Make \$500 payment for presentation spot and booth by August 15.
- Hurry there will be only 16 spots total!

Luncheons

ALL CONVENTION LUNCHEON (Monday, Oct. 1)

"The Continuing Evolution of Global Exploration"

Speaker: John Dribus

Cost: \$50

AAPG DPA LUNCHEON (Tuesday, Oct. 2)

"Looking into the 21st Century"

Speaker: Jeff Jones, Quantum Energy Partners

Cost: \$50

Special Events

GEOLOGY & WINE OF BURGUNDY, FRANCE

(Monday Evening, Oct. 1, 3 hr. event!)

Speaker: Kevin Hill

Cost: \$100

WOMEN IN GEOSCIENCES BREAKFAST (Tuesday

Morning, Oct. 2)

"The Value of Leadership in your Geoscience Career, Life Lessons from the Petroleum Industry"

Speaker: Denise Cox, AAPG President

Cost: \$25

Field Trips

Oxbow Lignite Surface Mine – Mining Wilcox Formation Lignites Overlain by Red River Alluvial Deposits (Saturday, Sept. 29)

Leaders: David Williamson and John McCorkle

Cost: \$125

Geology and Minerology of the Magnet Cove Arkansas Igneous Complex (Saturday, Sept. 29)

Leaders: David Williamson, Beki White, Dave Hanson, and Corbin Canon

Cost: \$140

Short Courses

Understanding Reservoir Fluid Behavior and Analysis for Geologists (Sunday, Sept. 30)

Instructor: Toddy Guidry, Core Lab

Cost: \$135

Hydrology and Water Resources Management for the Petroleum Geologist (Sunday, Sept. 30)

Instructor: Carrie Salinas

Cost: \$175

Using Project Resource Analysis to Manage Your Business (Sunday, Sept. 30)

Instructor: Creties Jenkins, Rose & Associates

Cost: \$200

Guest/Spouse Event

RED RIVER ARTS FESTIVAL

- Live Music, Food, and Commercial National Artists
- Nationally Recognized in Top 100 Arts Festivals
- Five Blocks from Convention Center
- Free Admittance with GCAGS Badge

Convention Hotel

Shreveport Convention Center and the Hilton Shreveport

The convention rate is \$119 for a single or double room, \$129 for triple occupancy, & \$139 for quad. Suites are also being offered based on availability. Please visit www.gcags2018.org for more info.

BE A JUDGE! VOLUNTEERS NEEDED!

GCAGS and GCSSEPM need your help in judging oral and poster sessions. Please contact Mark Dunham at mdunham@sugarcreekproducing.com or (318) 221-2899 for more information.



For the latest updates, visit www.gcags2018.org and www.gcags.org

SHREVEPORT GEOLOGICAL SOCIETY

Committees and Chairmanships

2018 - 2019

Advertising	Kurt Ley	Kingwood Exploration, LLC	918-7182
Budget	Morris Nichols	Stround Petroleum, Inc.	425-0101
Continuing Education	Needed		
Employment	Cody Lenert	Marlin Exploration	222-8406
Entertainment	John Hansen	Hansen Oil Corp	861-2269
Environmental	David Williamson	ATC Group Services, LLC	868-4848
Faithful Friends	Qiu Lu	O'Brien Energy, Co.	865-8568
Field Trip	Needed		
5K Run	Mark Dunham	Sugar Creek Producing Co.	221-2899
Golf Tournament	Scott Comegys	O'Brien Energy Co	865-8568
	Cody Lenert	Marlin Exploration	222-8406
Government Affairs	Scott Stroud	Stroud Exploration Co., LLC	425-0101
Historical	Ralph Richardson	Sartor-Richardson	869-4100
Honorary Membership/ Awards	David Billingsley, Jr.	Independent	222-7123
Investments	Morris Nichols	Stroud Petroleum, Inc.	425-0101
Library	Ralph Richardson	Sartor-Richardson	869-4100
Maps in Schools	Matthew C. Chumley	Nadel and Gussman	222-0908
Membership	Zach Gray	Ensign Energy	429-2220
Membership Directory	David Williamson	ATC Group Services, LLC	868-4848
Newsletter	Kevin Hill	Hill Geophysical Consulting	221-3329
Program	Cody Lenert	Marlin Exploration	222-8406
Publications	Annie Green	Nadel and Gussman Ruston	222-0908
Revel Mock Dig	Carrie Salinas	Virtus Environmental	518-1622
	Needed		
Scholarship Endowment	Alan Schlichtemier	Oden & Associates, LLC	222-2400
Scholarship Grants	Alan Schlichtemier	Oden & Associates, LLC	222-2400
Sci-Port Discovery	Zach Kelly	Milestone Energy	212-0470
Tennis Tournament	Anthony Spano	Spanoil Exploration, Inc.	221-2371
Website - Newsletter Editor	Rachel McNerney	Hill Geophysical Consulting	221-3329
Youth Activities	Larry Frizzell	TMR Exploration, Inc.	746-3616
	Mark Dunham	Sugar Creek Producing	221-2899
AAPG Delegate (7/1/16-6/30/19)	Mark Dunham	Sugar Creek Producing Co.	221-2899
Executive Assistant	Annie Green	Nadel and Gussman Ruston	222-0908
SGS Auxiliary President	Susan Schroeder		869-2401

HONORARY MEMBERS

James D. Aimer ^A	James B. Harris ^A	Paul Todd Landes, Jr. ^A	C. Ray Scurlock
William E. Bancroft ^A	William E. Hayes ^A	W. W. Lincoln ^A	Walter H. Spears ^A
Michael W. Beckman ^A	Roy T. Hazzard ^A	William R. Meaney	William C. Spooner ^A
Orville Roger Berg	Dr. Leo Hermann ^A	Clarence L. Moody ^A	George D. Thomas ^A
B. W. Blanpied ^A	Kevin B. Hill	John T. Palmer	Arthur H. Trowbridge
Prentis L. Boatner, Jr.	Charles J. Hoke ^A	Thomas H. Philpott ^A	Henry J. Tyler ^A
Alan L. Brittain	Perry G. Holloway ^A	William M. Plaster ^A	Claude N. Valerius ^A
John Franks ^A	Walter E. Hopper ^A	Gene R. Robinson ^A	Warren B. Weeks ^A
Victor P. Grage ^A	E. B. Hutson ^A	C. Lane Sartor ^A	Percy J. Wheeler, Jr.
John C. Grunau ^A	L. Lee Kincade ^A	Erwin W. Saye ^A	B. Ross White ^A
J. Frank Harrell ^A	Joseph O. Laird ^A	Fred R. Schroeder ^A	R. M. Wilson ^A

(^ deceased)

Shreveport Geological Society

P. O. Box 750 • Shreveport, LA 71162