

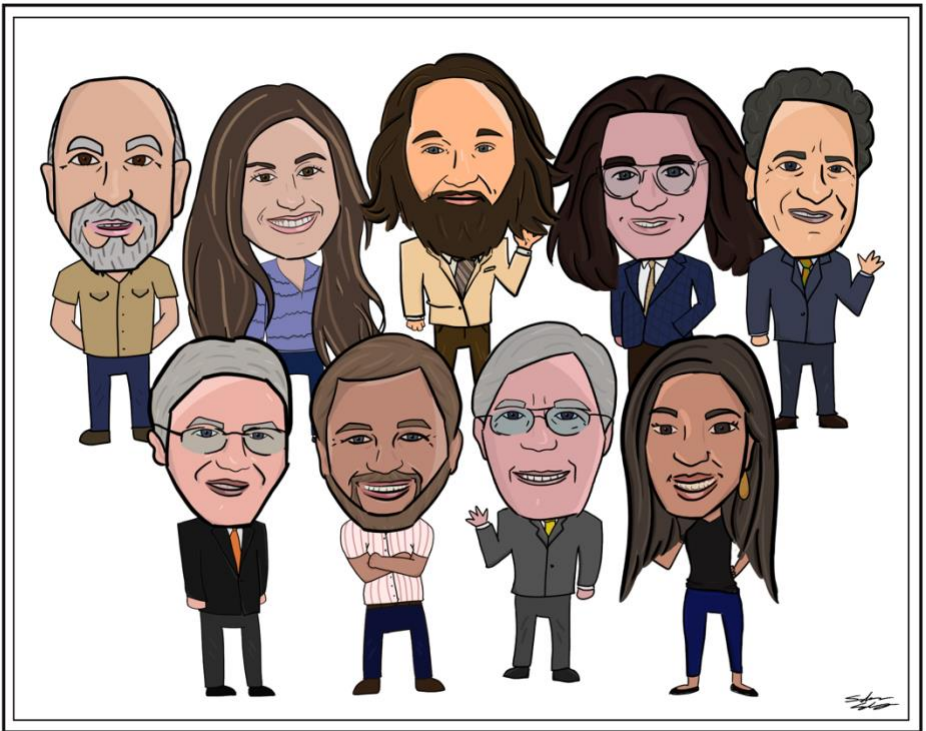


Shreveport Geological Society **NEWSLETTER**

Volume 65, No. 1

September 2020

2020 – 2021 Shreveport Geological Society Board of Directors



SGS1.ORG

Meet the Board p. 5
Rock or Frac p. 15

*Message
from*



*the
President*

So far, this year is shaping up to be one to forget. Despite our best hopes, the summer heat failed to extinguish the proliferation of the coronavirus. Our country finds itself highly divided and fighting complex obstacles with broad, overly simplistic solutions. While the geological industry is accustomed to the inherent uncertainty associated with forecast modeling, the masses find the lack of congruence between the predictions and reality shocking. How can one begin to explain the countless variables required to reasonably predict the likelihood of a novel virus' propagation, human behavior, and the interaction of the two? On top of that, the initial outbreak data used to base your variable assumptions is the product of a country proficient in the controlled dissemination of (dis)information. Tack on the ideological division regarding police action and authority, contested legality of "for the greater good" mandates, nationwide protests, looting, and combativeness of an election year. It is no surprise that many are re-reading Revelations very closely.

The year's hardships have not spared the oil and gas industry. Since 2020 began, crude oil's pricing crashed and fell sub-zero before increasing to the low \$40's and natural gas pricing continued its decline into April, bottoming out at \$1.65/mcf before rebounding to above \$2.40/mcf in August. As the world claws its way out of what was already a slowing global economy, further complicated by fear-driven docility and mandated stagnation, my hope is that resilience spurs recovery, and we see meaningful economic recovery in the latter months of 2020. Forge on!

Sincere appreciation is deserved to our board members whose term ended this summer. Please, if you see them, thank Zach Gray for serving as secretary and then first vice president last year, Morris Nichols for fulfilling the duty of treasurer for two consecutive years, and Cody Lenert for coordinating presenters as second vice president followed by assuming the role of president last year. We also welcome and owe gratitude to our incoming board members: Gary Abrams, Bezany Branton, and Michael Danos.

Ian Byram is the new second vice president and is coordinating this year's speaker's program—assembling an impressive line-up. With the health of all society members in mind and to address Petroleum Club protocols, the board has discussed and will be presenting different logistical meeting options in an effort to gradually return to our regular monthly gathering. In September, we'll have Greg Salter with CoreLab virtually presenting "Is It the Rock or the Frac?"

Be sure to register for the annual ATLAPL/SGS Golf Tournament. It is being held in the afternoon of Friday, September 25th, 2020. If you were interested in playing tennis the morning of the 25th, please contact Anthony Spano.

The 2020 GCAGS's GeoGulf and AAPG's ACE conventions are being held simultaneously between September 29th and October 2nd. This year they have a reciprocal registration structure, so, if you register for one, then you can attend/login to the offerings of both conventions.

Moving forward,
Matthew Chumley



70th GCAGS/GCSSEPM Convention and Exposition
Sept. 30–Oct. 2, 2020 · Lafayette, Louisiana

Faithful Friends 2019 - 2020

Ralph Richardson
Gerard Associates
Matthew Chumley
David Billingsley
Alan Schlichtemier
Maurice Birdwell
John E. Atkins
Louise Pearce
Sugar Creek Producing Company
Milestone Energy, LLC
Grigsby Petroleum, Inc.
Windell Phillips
Marlin Exploration, LLC
ALTECT Environmental
Consulting, LLC
William Downs
Zach Gray
Mark Schroeder
Stratagraph, Inc.
Johnnie P. Wanger

Mike Rogers Drilling Company, Inc.
T.W. McGuire & Associates, Inc.
Geological Drafting Consultants, Inc.
Bivins Energy Corporation
Craig C. Barclay
Earl Raborn
Palmer Petroleum, Inc.
Ber-Ex-Co
JM Exploration Co., LLC
Oden & Associates, LLC
Steve White
Joe White, Jr.
Arthur H. Trowbridge
Donner Properties, LLC
David Williamson
John Watkins
Bill Meaney
Hill Geophysical Consulting
Cypress Operating
Scott D. Stroud

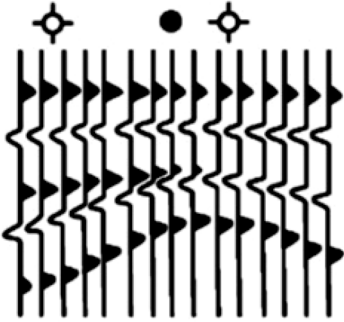
To be a Faithful Friend for 2019-2020, please contact Sarah Wilkes.

Invest in the Future

You can **donate** to the SGS Scholarship Fund online at SGS1.org or by writing a check to the SGS with "Scholarship" in the memo line, and you may include an "in memory of" or "in honor of" note as well.

Mail to: Shreveport Geological Society,
P.O Box 750, Shreveport, LA 71162.

Hill Geophysical Consulting



Kevin B. Hill

*Integrating Geophysical Technology
with Geology*

**What's Under Your
Feet? Find out:
HILLGEO.COM**



415 TEXAS ST., SUITE 200
SHREVEPORT, LA 71101

318.221.3329
kevin@hillgeo.com



Camterra Resources

Main Office

2615 East End Blvd. South
Marshall, Texas 75672
Telephone: (903) 938-9949
Fax: (903) 935-0521

Dallas Office

100 Crescent Court
Suite 1800
Dallas, TX 75201
Telephone: (214) 310-0512

www.camterra.com

Chief Executive Officer: Zach Carlile

President: Paul Marchand

Land Manager/General Counsel: Allen Staggers

Asst. General Counsel: Pam Johnson

Director of Operations and Engineering: Jim Larkin

Sr. Landman: Jason Derebery

Landman/Gas Marketing/Regulatory: Josh Searle

Seeking Opportunities in Texas, Louisiana, Arkansas, Mississippi, and New Mexico

Meet The Board



President

After graduating from Centenary College in 2010, **Matthew Chumley** began his career with Nadel and Gussman as an exploration geologist working North Louisiana, South Arkansas, East Texas, and North Texas. He enjoys spending time outdoors with his wife and three young children and is an avid outdoorsman.



First Vice President

Sarah Kaye Wilkes has worked as an Environmental Geologist since her graduation from Centenary College in May 2013. After working in the private sector, she made the switch to the Louisiana Department of Environmental Quality where she focuses on soil and groundwater remediation. She enjoys traveling, spending time with family, and coaching lacrosse.



Second Vice President

Ian M. Byram is a geologist working for Heritage Energy Company and EGH Operating, LLC. This is his second year serving on the SGS Board and he is eager to bring a season full of interesting and engaging talks as program director. Ian graduated in geology and business from SMU and received his M.S. in geology from Baylor University. He enjoys hunting, gardening, snowboarding, mountain biking, hiking, and anything else involving the outdoors.



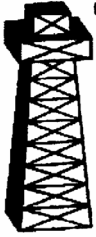
Secretary

Gary Abrams is approaching 18 years at Stroud Exploration. Graduated with a BS in geology from Vanderbilt University and and MS from the University of Texas at El Paso. Actively working TX, LA and MS. Served previously as VP and President of SGS as well as President of SPDA.

Enjoys sports activities, traveling as well as time at Lake Bistineau.

WHEN IT HAS
TO BE DONE
FAST!

400 TRAVIS ST.
SUITE 1606
S'PORT, LA
71101



COMPUTER
MAPPING FOR
THE OIL & GAS
INDUSTRY.
COLOR PLOTTING
AND DIGITIZING.

JOHN
HARRELL,
OWNER
ANDY
CARDIN,
DRAFTSMAN

PHONE

221-7780



skrivanos
engineering, inc.

Meet The Board

(continued)



Treasurer

Kevin McMaster has worked as a geologist in Shreveport for most of the past 35 years. Since 2015, he has been working as a consultant for numerous companies in Dallas and Shreveport. Prior to 2015, he worked for SM Energy in Shreveport and Tulsa for almost 14 years. He has previously served on the board and as an officer for the Shreveport Geological Society.



Board Member

Bezany Branton has been a geologist at Jones Environmental, Inc. for 16 years. She moved from Venezuela in 1997 to attend Louisiana Tech University. She graduated with a BS in Geology in 2002. In her free time, she enjoys spending time with her adorable kids, Leo and Vanessa.



Board Member

Michael Danos holds a Bachelor of Science Degree in Business Administration and Finance from Northwestern State University. He has worked throughout the oilfield since 1994 gaining a background that includes offshore construction, gas cryogenics, and field geology. Michael cofounded Toledo Mudlogging in 2002 and became President in 2013, a position that he currently holds. In his free time, Michael enjoys hunting & fishing with his kids and friends. He is honored to serve on the SGS Board, an organization to which he has belonged for many years.



PALMER PETROLEUM, INC.

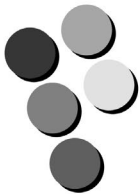
Exploration and Development • Operations • Oil and Gas Investments

330 Marshall Street, Suite 1200
Shreveport, Louisiana 71101

Phone: (318) 222-0517

www.palmerpetro.com

Fax: (318) 424-3256



Paragon

P R E S S

DESIGN PRINT MAIL

318-868-3351

www.ParagonPress.net

Meet The Board

(continued)

Board Member



Stuart Oden is manager of Oden & Assoc., LLC, an exploration company which was formed in 1996 focusing on exploration in South Louisiana and East Texas. He graduated from the Citadel (1975) and LSU -BR (1978) with an MS degree in geology. Stuart went to work for Sun Oil Co. in 1978 and then on to Goodrich Oil Co. where he worked as a geologist for 16 yrs. He enjoys forestry, deer hunting, and most importantly LSU baseball. He

looks forward to working with and learning from the younger members of the SGS.

Board Member



Jamey Walker recently retired from R. Lacy, Inc. in Longview, Texas after 28 years as a geologist and most recently V/P. and head of the Exploration Department. He formed Huntington Resources in June 2016, a geological consulting business. A 1978 graduate of LSU with a BS in Geology, he has almost 40 years of experience in the oil and gas industry. Having worked for several independents in Shreveport back in the 1980's, he has strong

connections to the SGS. He looks forward to working with other Board members to strengthen the SGS and continue the tradition of providing education, fellowship, and support for fellow geologists.

Executive Assistant to the Board



Annie Green is a Geotech for Nadel and Gussman. She serves as SGS's Executive Assistant to the Board and Publication Committee Chairman. She also volunteers in her community as a member of the Christmas in Houghton Festival and National Night Out planning committees as well as Houghton MPC Board Member. In her free time, Annie enjoys outdoor adventures with her husband and three sons.



MILESTONE ENERGY, LLC

Oil & Gas Exploration and Development

Joseph A. Lott

Geologist / Managing Partner

Zach Kelly
Geologist

Zach McDonald
Geologist

Thomas A. Giles
Land Manager

333 Texas Street, Suite 516
Shreveport, Louisiana 71101
jlott100@bellsouth.net

Office: 318.212.0470
Fax: 318.212.0469

- Looking for Prospects
- Geophysical Consultant
- Landmark Graphics Corp. Software
- Synthetic Seismograms, modeling and cross sections



- Digitizing capability
- 2-D & 3-D Seismic Acquisition, Processing & Interpretation
- SeisVision 2-D & 3-D interpretation and mapping software

Bobbie Ben Taylor - President

O: 120 S Broadway, Suite 102
Tyler, Texas 75702
Mobile: (903) 521-3182

H: 7130 Holly Square Court
Tyler, Texas 75703
Email: taylor@webfoxmail.com

LOOKING FOR PROSPECTS

Let me tailor your geophysical needs.

HALLIBURTON

Do you require an integrated approach to total well construction, formation evaluation, and optimized production? Make the jump to our team. We have the best local people for designing your well, performing state of the art formation evaluation, and planning and executing your completion.

Logging & Perforating
Production Enhancement (Stimulation)
Cementing
Security Bits
Tools, Packers, & TCP
Coli Tubing Services

Shreveport Sales 318-673-4400
Tyler sales 903-581-5263
Kilgore Operations 1-800-654-6926



www.lmkr.com



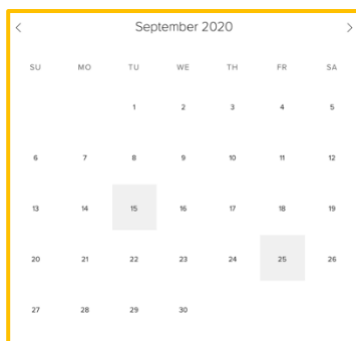
Jeremy Stuhr
Account Executive

jsuhr@lmkr.com
P : +1 281 848 3319
C : +1 346 313 5377
F : +1 281 879 0135



LMK Resources Inc.
6051 North Course Drive Suite 300
Houston, TX. 77072 USA

Calendar of Events



View this interactive calendar at SGS1.org

September 11

RSVP for the monthly meeting

September 15

Monthly Meeting

In-person 11:30 a.m. - 1 p.m.; Petroleum Club 15th Floor

Virtual 12:00 p.m. - 1 p.m. Zoom

September 25

ALTAPL/SGS Golf Tournament

October 20

Monthly Meeting

November 20

Annual Geology and Wine Dinner Meeting

On the Cover: The board imagined together, by Sophia Silvia.

Interior Art: Page 1 "Saturn's Stormy Weather" (*detail*) by Christine Bailey. Courtesy of the Bailey Gallery, online at bailey-gallery.com.

Page 13 "Isolation" (*detail*) by Mary Virginia Hill, now showing at ArtSpace in the Quarantine Exhibition through September 26.

Got news? Geology photos for the cover? Meeting page art?

Email it to the editor today: 1RachelMcNerney@gmail.com



Jerry W. Taylor

Consulting Geologist, LLC

17377 LAUREN DRIVE
PRAIRIEVILLE, LA 70769

1-(225)-287-8342

JWTGEOLOGY@GMAIL.COM

WWW.JWTGEOLOGY.COM

R. LACY / CRAIN ENERGY

*Oil and Gas Investments
Exploration and Development*

222 EAST TYLER STREET
LONGVIEW, TX 75601
903-758-8276 (O)

Chris Bresch
V.P. Exploration
cbresch@rlacy.com

Hunter Brumble
Staff Geoscientist
hbrumble@rlacy.com

Scott Caswell
Sr. Geophysicist/Geoscientist
scaswell@rlacy.com



Address: 5395 Pearl Prkwy, Ste. 200
Boulder, CO 80301
Telephone: (303) 541-1559
Fax: (303) 443-1551

&

Address: 401 Edwards St., Ste. 1601
Shreveport, LA 71101
Telephone: (318) 227-8668
Fax: (318) 227-9012

Operating in the MAFla, ArkLaTex,
and WY

MUSLOW OIL & GAS, INC.

330 Marshall Street
Suite 628
Shreveport, LA 71101

Eric Weiss
President

(318) 221-8694
Fax: (318) 227-2106

The September Meeting

Make your
RESERVATION

Greg Salter

presents

“Is It the Rock or the Frac?”

Tuesday, September 15

Virtual

12:00 p.m. Zoom

\$10

In-Person

11:30 a.m. Petroleum Club of Shreveport

\$20 (Children 10 and under \$8)

We encourage members to invite guests, spouses, and friends to any of our meetings.

If you'd like a seat, kindly **RSVP**
by **Friday, September 11** at SGS1.org

Name: _____

I will bring ___ guest(s): _____

Kingwood Exploration, LLC
Oil & Gas Exploration
and Production



Kurt M. Ley

Exploration Manager & Partner

Robert E. Braswell

Engineering/Operations Manager & Partner

416 Travis St., Suite 1100
Shreveport, LA 71101

Phone: 318-946-8585

Fax: 318-946-8287

kurt.ley@kingwoodexploration.com
robert.braswell@kingwoodexploration.com



Established by G.M. Anderson

333 TEXAS ST., SUITE 2020

SHREVEPORT, LA 71101-5357

Phone: (318) 227-2000

Fax: (318) 425-5935



★ Milam, TX

★ Many, LA

The Horizontal Specialists!!

We work with the greatest companies
in the world, please give us a call
to see what we can do for you!!

Joe Eidson 318-623-5077

Michael Danos 318-332-7673

P. O. Box 1209, Many, LA 71449

Security Exploration, Inc.

8509 Line Avenue
Shreveport, LA 71106



J. Stafford Comegys
President

Donna Walker
Geologist

Barbara Lyles
Office Manager

OIL & GAS EXPLORATION

Tel: (318) 222-1066

Fax: (318) 222-4932

Greg Salter

Greg Salter has been employed by Core Laboratories for over 40 years serving in a number of different capacities and geographic areas. Over 20 years of this service was in the Petroleum Services Division either working in, or directing, laboratory operations including approximately 10 years of international service. He is currently serving as Vice-President of the Integrated Reservoir Solutions Division of Core Laboratories where he is responsible for project management and technical review of all data and resulting interpretations utilized in the various Joint Industry Projects offered by the company. He has most recently focused on the development of core analysis technologies for shales and mudstones and their application and holds a BS in Mathematics from the University of Houston (1985).



Abstract

“Is It the Rock or the Frac?”

When well production is less than expected, often a debate ensues as to the reasons and tends to focus on reservoir quality (Is it the Rock?) or on how the well was stimulated and produced (Is it the Frac?). The geologist, drilling engineer, petrophysicist, and completion engineer often differ in their explanation for the reduced well performance. In other cases, nearby wells may perform differently with little obvious reason for the production differences. This presentation will outline a methodology to identify the likely source of unexpected well performance through a number of case history examples that emphasizes the need for a multi-disciplinary approach to address these complex reservoir challenges.

THE PETROLEUM CLUB OF SHREVEPORT

Serving delectable cuisine to the
Shreveport Geological Society
regular luncheon meetings.

318-425-4251



**David Meadows
Manager**

Mid South Tower Bldg.
416 Travis Street, Suite 1414
Shreveport, LA 71101

Phone: 318-425-7617
Fax: 318-425-1385
Email: jmexploration@comcast.net

BRAMMER ENGINEERING, INC.

Services:

- **Drilling**
- **Completion**
- **Construction**
- **Production**
- **HSE**
- **Regulatory**
- **Land**
- **Accounting**
- **Risk
Management**
- **Information
Systems**



www.brammer.com
318.429.2345 o • 318.429.2340 f

401 Edwards Street, Suite 1510, Shreveport, LA 71101

WLS CORPORATION

**OIL & GAS
EXPLORATION & PRODUCTION**

**Wayne L. Simpson
President**

**Philip Davis
Geologist**

416 Travis Street, Suite 1006
Shreveport, Louisiana 71101

Office: (318) 425-2978
Fax: (318) 425-3166

2020 Louisiana Region 1 Science & Engineering Fair

by Larry Frizzell

The 2020 Louisiana Region 1 Science & Engineering Fair judging was on March 6th at the Bossier Civic Center. Volunteers from the SGS judged earth science-related projects and awarded cash prizes to the 1st (\$125), 2nd (\$100), & 3rd (\$75) place winners in each of the three divisions - Elementary, Junior High, & High School.

Many thanks to our volunteer judges: Bob Sharp, David Williamson, Roger Berg, Ralph Richardson, Greg Zerrahn, and Cody Lenert.

The winners of the SGS Awards are:

PLACE	NAME	TITLE	GRADE	SCHOOL
1	Marleigh Keen	What Does Activated Carbon Remove?	5	Richardson Elementary
2	Varsha Manikandan	Roof to Garden	5	Fairfield Elementary Magnet
3	Mahailey Nail	Ocean Cooling	5	Brown Upper Elementary
1	Alexander Morgan	Conductivity of Aqueous Solutions	7	St. Joseph's Middle School
2	Alexander Horne	The Quicker Picker Upper of Oil Spills	6	Yoree Drive Middle Magnet
3	Roman McMillan	Which Procedure Best Separates Soil from Dirty Water?	7	Herndon Middle Magnet
1	Nhi Dao	A Mathematical Analysis of Martian Impact Craters	9	Caddo Magnet High
2	Sarah Johnson	Determining the Effect of Increased Geomagnetic, Ionospheric Activity on GPS Accuracy	10	Caddo Magnet High
3	Xavier Hutchinson	Lincoln High Dive	12	Green Oaks Performing Arts Academy

Baldwin Madden Energy, LLC

*Oil and Gas Property
Acquisitions and Development*

George A. Baldwin, Jr.

Gregory K. Madden

Christopher D. Franks
Senior Geologist

Lonnie J. Shaw
Director of Accounting & Finance

(318) 429-2220

(318) 429-2229 Fax

333 Texas Street, Suite 1919
Shreveport, LA 71101-3676

Reynolds Drilling Company, Inc.

7591 Fern Ave., Suite 2001
Shreveport, Louisiana 71105-5502

Phone: (318) 227-0118

Fax: (318) 227-0171

reydrill@bellsouth.net

Terry Pat Reynolds
President

STROUD PRODUCTION, LLC

333 Texas Street, Suite 860

Shreveport, Louisiana 71101-5302

Voice: (318) 429-2260

Fax: (318) 429 2255

Email: ras@spllc.com



SPANOIL INCORPORATED

416 TRAVIS ST., SUITE 806
SHREVEPORT, LA 71101
VOICE: (318) 221-2371
FAX: (318) 221-2372
anthony@spanoil.com

ANTHONY J. SPANO
PRESIDENT

Virtual Continuing Education Seminar

By Jamey Walker

The SGS/ETGS hosted the first ever Virtual Continuing Education Seminar on April 29. Interest was very high as we had over 100 participants tune in to hear three informative, dynamic speakers discuss the current economics of our Industry during a global pandemic. We heard lots of positive feedback from the participants, so look for more Webinars in the future.

Featured Speakers:



Arthur E. Berman, Director
Labyrinth Consulting Services, Inc.
artberman.com

Michelle Michot Foss, Ph.D.
Fellow in Energy and Minerals
Rice University, Baker Institute



John Jacobi
Co-CEO
Covey Park Energy





Shreveport Petroleum Data Assn., Inc.

333 Texas Street, Suite 900

Shreveport, LA 71101

(318) 429-2237

Fax (318) 429-2441

Website : www.spdalog.org

spda@spdalog.org

Cindy Shepherd

Manager



Bobby E. Jelks
President

Faith N. Gilbert
CFO

P. O. Box 7665
Shreveport, LA 71135-7665

Phone: (318) 221-2688

Fax: (318) 459-2935

Edward Yarborough
Exploration Manager

James Light
Land Manager



GEOVENTURES™

Ashley Garcia

Assistant Program Manager

Main +1 713 789 7250

Direct +1 281 781 1005

Fax +1 713 789 7201

Mobile +1 281 239 4576

ashley.garcia@iongeo.com

2105 City West Blvd., Ste. 900

Houston, TX 77042-2837 USA iongeo.com



L. CHRIS JOHNSON
Manager

2650 Fairfield Ave
Shreveport, LA 71104
BUS:(318) 222-6652
FAX: (318) 222-6673
cjohnson@jerlic.com

GRIGSBY PETROLEUM, INC.

**Oil & Gas Exploration
and Production**

333 Texas St., Suite 2285

Shreveport, LA 71101

Phone (318) 425-5306

Fax (318) 425-3733

Office Phone
(318) 222-7123

Residence Phone
(318) 925-2348

David L. Billingsley, Jr.
Certified Petroleum Geologist

400 Travis Street, Suite 1230
Shreveport, LA 71101
DLBJR1@aol.com

Cell Phone
(318) 426-4320



OIL AND GAS

DIANA L. CHANCE
MANAGING DIRECTOR

P. O. Box 1346 SHREVEPORT, LA 71164

(318) 227-2131 • FAX: (318) 222-5832

CELL: (318) 347-8848

WWW.DONNERPROPERTIES.COM



LOUISIANA BOARD OF PROFESSIONAL GEOSCIENTISTS

Geoscientist Licensing in Louisiana

Did you know?

When you attend a monthly Shreveport Geological Society meeting, you earn one hour of continuing education credit for your LBOPG license. This is a simple and enjoyable way to get your hours! You can also find links to continuing education ethics credit courses at <https://sgs1.org/continuing-education/>.

Ready to track your CE hours?

Visit the LBOPG website today to download your continuing education log template lbopg.org/resources/continuing-education

1	A			B			C			D			E			F			G			H			I			J			K			L		
2	Name:												PG License #:			Renewal Date:																				
3	Date		Activity			Sponsor Organization			Credits																											
4	Code*		Title			Instructor			Name		Location		Time	CEU	PDH																					
5																																				
6																																				
7																																				
8																																				
9																																				
10																																				
11																																				
12																																				
13																																				
14																																				
15																																				
16																																				
17																																				
18																																				
19																																				
20																																				
21																																				
22																																				
23																																				
24																																				
25																																				
26	Audits will be conducted randomly and/or as needed to confirm CE activities each year.																																			
27	It is your responsibility to collect and maintain proof of attendance and completion of CE activities in case an audit is called.																																			
28	*Code		Conversion of =			PDH			Minimum hrs. to renew			Maximum hrs. Allowed/Period																								
29	Participant Credit	P	Each Direct Hour =	1		14			Geoscience Credits			Society Meetings			12																					
30	Instructor Credit	I	CEU, Papers, etc. =	10		1			Ethics Credits			Self directed Coursework			5																					
31	Authorship Credit	A	College Qtr. Hr. =	10		15			Total			Authorship - Paper			10																					
32	Meeting Credit	M	Semester Hour =	15								Authorship - Book			45																					
33	Ethics Credit	E	Instructor =	3XPDH																																
34																																				
35	This form was intended to be a one (1) letter size page, i.e. one (1) years record of CE activity or 15 PDH.																																			
36	It is recommended that additional data be entered into a second (or third, etc.) worksheet in this spread sheet workbook.																																			
37	An entire (blank) form can then be copied into the new worksheet and the sheet tab named as the report year.																																			
38	This workbook has two (2) new sheets included as examples so you can start the process of recording your CE activity.																																			
39																																				



Thomas C. Wyche

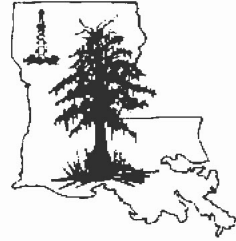
CERTIFIED PETROLEUM GEOLOGIST

Horizontal & Vertical Projects
E.Tx., N.La., S.Ark.

333 Texas St., Suite 703
Shreveport, LA 71101
318.465.2944
geo1tcw@gmail.com

LA-PG
AAPG-CPG

Cypress Operating, Inc.



STEVEN A. SINGLETARY
BEN ROBINSON

Petroleum Geologists

Office: (318) 424-2031
Fax: (318) 425-8140

330 Marshall Street, Suite 930
Shreveport, LA 71101



EXPLORATION, L.L.C.

401 Edwards Street, Suite 1200
Shreveport, LA 71101

P.O. Box 1367
Shreveport, LA 71164

office: (318) 222-8406
fax: (318) 222-6061
email: mei@marlinexploration.com

Jon Q=Petersen
President

S. Cody Lenert
Geologist

Autie T. Orjias
V.P./Land Manager

Ryan Q=Petersen
Land

Dean Giles
Secretary/Treasurer



Seismic Exchange, Inc.

Strategic Speculative Surveys
Geophysical Data Marketing & Management

Your
Full Service
National
Seismic Data
Marketing Firm

Marketing contact:
Layne Williams
lwilliams@seismicexchange.com

DALLAS DENVER HOUSTON NEW ORLEANS TULSA

201 St Charles Ave., Suite 4300
New Orleans, LA 70170
(D) 504-510-2508 (C) 504-458-3056

www.seismicexchange.com

Monthly Permits – July 2020

Provided by ABCD GIS Mapping

Texas Permits

AppDate	API	Operator	County	Purpose	TD
7/1/20	20335422	COMSTOCK OIL & GAS, LLC (170038)	HARRISON	New Drill	11055
7/1/20	20335423	COMSTOCK OIL & GAS, LLC (170038)	HARRISON	New Drill	11055
7/1/20	20335421	COMSTOCK OIL & GAS, LLC (170038) ROCKCLIFF ENERGY OPERATING LLC	HARRISON	New Drill	11055
7/2/20	20335408	(722890)	HARRISON	New Drill	13000
7/2/20	20335424	TANOS EXPLORATION II, LLC (835976)	HARRISON	New Drill	11380
7/6/20	20335413	COMSTOCK OIL & GAS, LLC (170038)	HARRISON	New Drill	12000
7/9/20	20335420	SABINE OIL & GAS CORPORATION (742143)	HARRISON	New Drill	12000
7/10/20	20335425	SABINE OIL & GAS CORPORATION (742143)	HARRISON	New Drill	12000
7/10/20	20335426	SABINE OIL & GAS CORPORATION (742143)	HARRISON	New Drill	12000
7/13/20	36531625	BUFFCO PRODUCTION INC. (106406)	PANOLA	Reclass	10201
7/14/20	18331263	DALLAS PRODUCTION, INC. (197690)	GREGG	Recompletion	10580
7/16/20	20335405	TRINITY OPERATING (USG), LLC (870209)	HARRISON	New Drill	12000
7/16/20	20335406	TRINITY OPERATING (USG), LLC (870209)	HARRISON	New Drill	12000
7/17/20	06730825	STETSON PETROLEUM CORP. (819479)	CASS	New Drill	10700
7/21/20	20335414	TANOS EXPLORATION II, LLC (835976)	HARRISON	New Drill	11462
7/22/20	20335415	TANOS EXPLORATION II, LLC (835976) ROCKCLIFF ENERGY OPERATING LLC	HARRISON	New Drill	11428
7/24/20	20335407	(722890)	HARRISON	New Drill	13000
7/24/20	18331595	DALLAS PRODUCTION, INC. (197690)	GREGG	Recompletion	10700
7/27/20	20335427	TANOS EXPLORATION II, LLC (835976)	HARRISON	New Drill	11312
7/27/20	36536274	M. E. OPERATING & SERVICES, INC. (518265)	PANOLA	Recompletion	10074
7/28/20	36538555	TANOS EXPLORATION II, LLC (835976) ROCKCLIFF ENERGY OPERATING LLC	PANOLA	New Drill	6000
7/31/20	20335396	(722890)	HARRISON	New Drill	13000
7/31/20	20335428	TANOS EXPLORATION II, LLC (835976)	HARRISON	New Drill	11297
7/31/20	36538576	TANOS EXPLORATION II, LLC (835976)	PANOLA	New Drill	9660
7/31/20	36538577	TANOS EXPLORATION II, LLC (835976) SONERRA RESOURCES CORPORATION	PANOLA	New Drill	9420
7/29/20	34733422	(801643)	NACOGDOCHES	New Drill	650

See map and Louisiana Permits on following pages.

BER-EX-CO., INC.

Orville Roger Berg, Ph.D.

Exploration, Exploitation
Seismic Evaluation
Domestic, International

400 Travis St., Suite 1612
Shreveport, LA 71101-3108
(318) 220-0300
orberg@bellsouth.net

9949 Beaver Creek Drive
Shreveport, LA 71106
(318) 798-1748

GERARD ASSOCIATES, L.C.

OIL & GAS EXPLORATION
DEVELOPMENT AND ACQUISITIONS

J. A. Wojtkiewicz • Charles Gerard

625 Market St., Suite 250
Shreveport, LA 71101
Tel. (318) 221-0761 • FAX (318) 221-8835

ODEN & ASSOCIATES, LLC

Oil and Gas Exploration
Phone: 318-222-2400
Fax: 318-226-0840



ALAN SCHLICHTEMIER
Geologist

P.O. Box 1806
Shreveport, LA 71166

416 Travis Street, Ste. 400
Shreveport, LA 71101
odenassoc@bellsouth.net



**Kalmbach
Production Company, LLC**

Sam Kalmbach
Geologist

400 Travis Street, Ste. 516 office: (318) 424-6566
Shreveport, LA 71101 cell (318) 470-9977
e-mail: sam.geo.kpc@gmail.com

BARROW-SHAVER RESOURCES COMPANY

Oil & Gas Exploration & Development

Scott Owen Shaver
Managing Partner and Exploration Manager

903-593-5221 Office
903-593-1692 Fax
903-561-4711 Home
903-582-4711 Farm
903-245-4999 Mobile

977 Pruitt Place
Tyler, Texas 75703
sos-bsr@tyler.net



Drilling Contractor
Oil & Gas Operator
Turnkey Services
Well Service & Workover
Working Interest Participant

318-992-4111
P. O. Box 2990, Jena, LA 71342
justissoil.com

TIM H. MARSHALL DIRCK E. WUELLNER

MARSHALL-WUELLNER, INC.
Petroleum Geologists

AmSouth Tower
333 Texas St., Suite 608
Shreveport, LA 71101-3671
Office: (318) 429-2250
Fax: (318) 429-2251

Mike Rogers Drilling Co., Inc.

Drilling & Interest Participation

MIKE ROGERS, PRESIDENT
CRAIG ROGERS, VICE PRESIDENT

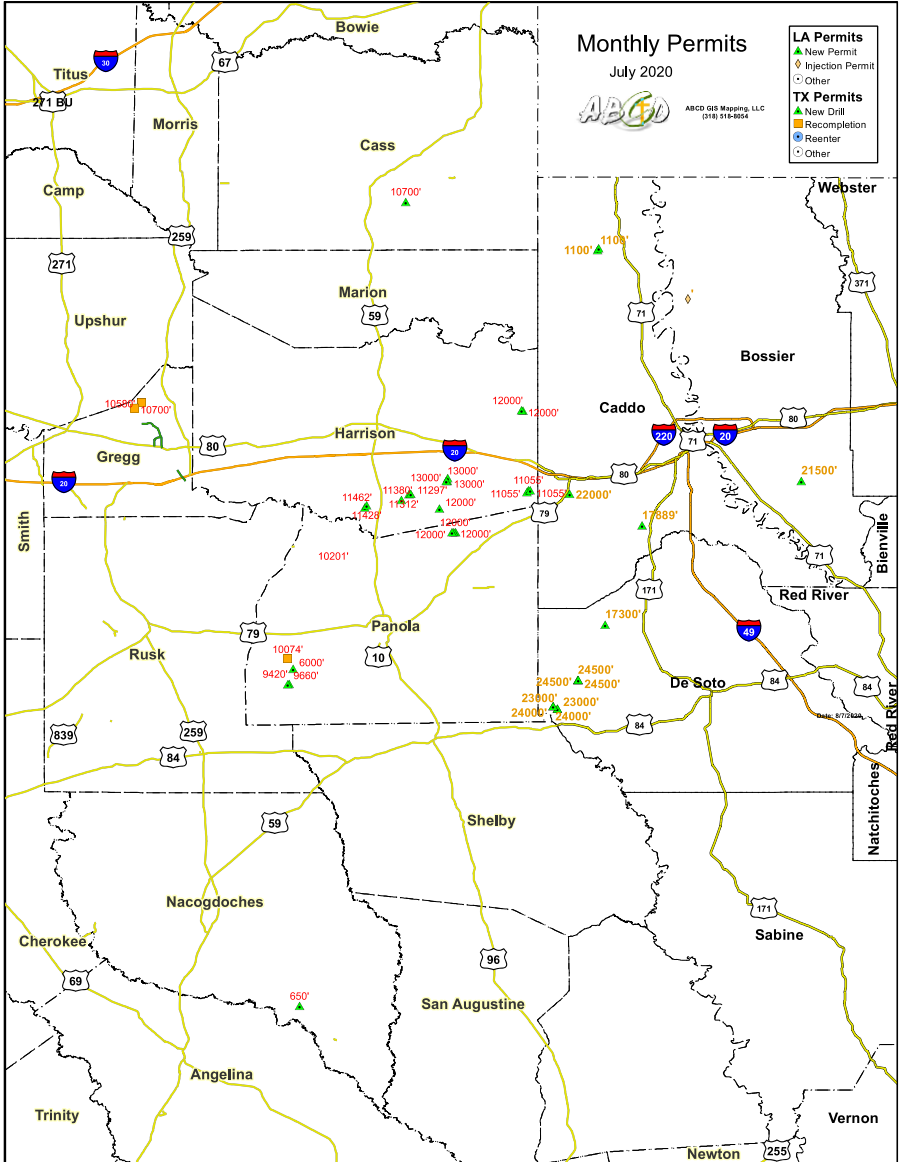
Office: 870-234-2356 • Fax: 870-234-7487

1708 N. Vine Street • P.O. Box 126 • Magnolia, AR 71754
email: mrdc1981@gmail.com

Monthly Permits – July 2020

Provided by ABCD GIS Mapping

Map



See Louisiana Permits listed on following page.



JON E. SAYE

PETROLEUM GEOLOGIST

Office: 318-221-4504
Fax: 318-221-4516
Cell: 318-458-1515

1015 Mid South Twr. • P. O. Box 137
Shreveport, LA 71161
jsaye@prodigy.net

COUTRET & ASSOC., INC.

Petroleum Reservoir Engineers
Property Evaluation, Reservoir Engineering
Fluid Injection, Property Management

Louisiana Tower
401 Edwards Street
Shreveport, LA 71101

Telephone: (318) 221-0482
Fax: (318) 221-3202
E-mail: rmcgowen@coutret.com



GEOVENTURES™

Alvin Rowbatham
Sales Manager

Main +1 713 789 7250
Direct +1 281 781 1005
Fax +1 713 789 7201
Mobile +1 832 372 2366
alvin.rowbatham@iongeo.com

2105 City West Blvd., Ste. 900
Houston, TX 77042-2837 USA iongeo.com



Delta-T
Geophysical
Consulting, Inc.

Comprehensive Geophysical Services

- Kingdom Suite 2d/3d pak
- Geographix
- GMA
- Neuralog
- Mesa 3-D Design
- Digirule

Woodie Huffman, CEO

401 Edwards Street, Suite 826
Shreveport, LA 71101-5510

Phone: (318) 221-0414

Fax: (318) 425-0688

Email: delta@bellsouth.net

Williamson

OIL & GAS, INC.

Oil & Gas Development



Office: (318) 221-2923 400 Travis Street
Fax: (318) 221-3488 Suite 1410
Email: bob@williamsonogi.com Shreveport, LA 71101

Joe R. White, Jr.
Petroleum Geologist

8505 Dogwood Trail
Houghton, LA 71037
Cell. 318-423-9828
Hm. 318-949-3539
Available for Consulting

AAPG CPG #5580
MS RPG #0097
LA CPG #345
Jwhite1362@aol.com
Joerjrw@gmail.com

Cowgill & Associates, L.L.C.

Oil & Gas Exploration & Production

Stephen C. Cowgill
Geologist/Managing Partner

P. O. Box 72180 Office: 318.429.2170
Bossier City, LA 71172-2180 Fax: 318.429.1170
cowgill@suddenlink.net Cell: 318.455.9516

CSC ENERGY CORP.

OIL & GAS EXPLORATION

Joel B. Chevalier
PRESIDENT

416 Travis Street
Suite 507
Shreveport, LA 71101

Mobile: (318) 469-5625
cscenergy@bellsouth.net

Monthly Permits – July 2020

Provided by ABCD GIS Mapping

Louisiana Permits

County	WellSN	WellName	Permit Date	Depth	Organization
BOSSIER	252377	HA RA SUZ;WEYERHAEUSER 30-31HC	7/9/20	21500	BRIX OPERATING LLC MCCORMICK PRODUCTION COMPANY, INC.
BOSSIER	975716	M&M ENERGY SWD	7/28/20	0	COMPANY, INC.
CADDO	252378	SUTHERLIN	7/9/20	1100	EGH OPERATING, LLC
CADDO	252379	ANKERSON	7/9/20	1100	EGH OPERATING, LLC
CADDO	252387	HA RA SUT;BLEDSE 30-16-14 H HA RA SU133;DUNN ETAL 35-26 H	7/27/20	17889	CHESAPEAKE OPERATING, L.L.C.
CADDO	252388	H	7/27/20	22000	BLUE DOME OPERATING, LLC ENSIGHT IV ENERGY MANAGEMENT, LLC
DE SOTO	252376	HA RA SU73;CTF LLC 33 H HA RA SUD;MRK 1&36&25-12-16 HC	7/1/20	17300	INDIGO MINERALS LLC
DE SOTO	252380	HA RA SUD;MRK 1&36&25-12-16 HC	7/16/20	24500	INDIGO MINERALS LLC
DE SOTO	252381	HA RA SUD;MRK 1&36&25-12-16 HC	7/16/20	24500	INDIGO MINERALS LLC
DE SOTO	252382	MRK 1&36&25-12-16 H	7/16/20	24500	INDIGO MINERALS LLC
DE SOTO	252385	HA RA SUQQ;CURRY 28-33 HC	7/27/20	23000	COMSTOCK OIL & GAS--LA, LLC
DE SOTO	252386	HA RA SUQQ;CURRY 28-33 HC	7/27/20	23000	COMSTOCK OIL & GAS--LA, LLC
DE SOTO	252393	HA RA SUJ;ADAMS 21-28-33 HC	7/30/20	24000	COMSTOCK OIL & GAS--LA, LLC
DE SOTO	252394	HA RA SUJ;ADAMS 21-28-33 HC	7/30/20	24000	COMSTOCK OIL & GAS--LA, LLC

See Map and Texas Permits listed on previous pages.

Join our group on

LinkedIn

Keep in Touch

through the Shreveport Geological Society LinkedIn Group.



The rock kit is ready
(pictured left).

E-mail Maps in Schools Chairman
Matthew Chumley at
mchumley@naguss.com
to give a talk with the kit and
present a geologic map to a class
of future geoscientists.



Craig C. Barclay
Petroleum Geologist, L.L.C.

10857 Sunrise Point Phone (318) 524-9920
Shreveport, LA 71106 Mobile (318) 426-2536
cbarclay1@comcast.net

Wireline Services

Weatherford International, Ltd.
1101 ESE Loop, 323, Ste. 200
Tyler, Texas 75701, USA



Weatherford

Richard 'Dick' Swindell
Technical Sales Advisor
Wireline & Borehole Seismic

Direct: +1.903.594.4926
Main: +1.903.534.5243
Fax: +1.903.939.8907
Mobile: +1.903.530.4016
richard.swindell@weatherford.com
www.weatherford.com

T. W. McGuire & Associates, Inc.

Registered Petroleum Engineers

416 Travis St., Suite 1400
P. O. Box 1763
Shreveport, LA 71166
(318) 222-0761
(318) 222-0799 Fax

James T. Maranto Robert T. Maranto

**BAKER
HUGHES**
a GE company



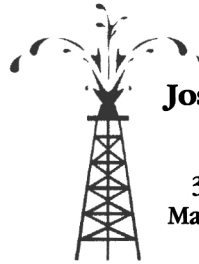
Jim Hankla
Sales
Southern US

M +1 903 312 8500
james.hankla@bhge.com



416 TRAVIS STREET ♦ SUITE 600
SHREVEPORT, LA 71101
PHONE ♦ (318) 425-0101
FAX ♦ (318) 425-2211

MORRIS NICHOLS
GARY ABRAMS
JOHN STROUD
GEOLOGISTS



Joseph H. McDuff
Geologist

351 Chapel Loop
Mandeville, LA 70471
985.845.9430
jmcduff@bellsouth.net

DOWNNS

ENERGY ACQUISITIONS, LLC
OPERATING COMPANY, LLC

SHREVEPORT, LOUISIANA
318-716-7670
wdownns@downns-energy.com

In Memoriam: Simeon Horton



Simeon King Horton was a Petroleum Geologist with an extensive background in exploration and development of major oil and gas projects working as a consultant for oil and gas companies. Over her 43 years of experience in the oil and gas industry, she has always been associated with independent geologists who have been very aggressive and successful.

Upon graduation, Horton worked for Dudley Hughes, an independent geologist, in Jackson, Mississippi, from 1977 to 1986. During that time, she gained broad experience in the Mississippi/Alabama Salt Basin, Black Warrior Basin in North Mississippi and Northwest Alabama, and South Florida. The main targets of exploration were the Smackover/Norphlet Formations (located in the Salt Basin), the Paleozoics (located in the Black Warrior Basin), and the Sunniland Lime (located in South Florida). Horton was also exposed to the Perth Basin in Australia. As District Geologist, she was extensively involved in the exploration and development of a very aggressive drilling program and all facets of the industry.

In 1986, Horton moved to Shreveport, Louisiana where she was a consultant for various oil and gas investors until 1989. From 1989 to 1996, she worked with Grigsby Petroleum in Shreveport, Louisiana, a company owned by Jack Grigsby, an independent geologist. Grigsby Petroleum is very active in North Louisiana and East Texas with numerous properties. Among these are Hosston and Cotton Valley production. Horton was responsible for all the producing properties, the development of the properties, and the drilling of new wells for Grigsby Petroleum.

From 1996 to present, Horton was a consulting petroleum geologist. She was very active in the Hosston/Cotton Valley trends in North Louisiana and East Texas. She generated drilling prospects in the area, and was successfully responsible for the drilling of the Hosston/Cotton Valley in an area where there are sixteen to twenty wells per section.

Simeon King Horton received a Bachelor of Science degree with a Major in Geology and a Minor in Mathematics from the University of Southern Mississippi, Hattiesburg, Mississippi in 1977. She graduated with honors and was selected Outstanding Graduating Senior in Geology for the academic year of 1976-1977. She attended geology field camp thru the Rolla School of Mines, University of Missouri, which was conducted in the state of Utah. She was an active member of the American Association of Petroleum Geologists and the Shreveport Geological Society, Shreveport, Louisiana.

CAPLIS FORESTRY, LLC

JEFFREY W. CAPLIS

-CONSULTING FORESTER-

CELL: 318-617-9016

OFFICE: 318-752-3662

586 CAPLIS SLIGO RD.

BOSSIER CITY, LA 71112

-complete forestry services-

- Timber Appraisals • Timber Management • Timber Cruising •
- Damage Appraisals • Tree Planting •

B.S. LOUISIANA TECH: SCHOOL OF FORESTRY



Will-Drill Resources, Inc.

Rick Holland: Geology
Bret Hardcastle: Engineering
Kem Hargrove: Land

1915 E. 70th. Street
Shreveport, LA 71105
Office (318) 222-7464
Fax (318) 222-7466

Actively seeking Oil & Gas opportunities in the Upper and Lower Gulf Coast Basin. Operated and Non-Operated. Vertical normal pressured development prospects and Acquisitions preferred.

You are cordially invited to the
Twelfth Annual Shreveport Geological Society
Geology and Wine Dinner

**Flâneur Wines of Oregon -
Crafting Oregon Wines that Tell a Story**

November 20, 2020
Petroleum Club of Shreveport, 16th Floor
Reception – 6:30 p.m.
Presentations & Dinner – 7 p.m.

With Kevin Hill, geophysicist,
and featured guests from Flâneur Wines

The evening will include an exciting story of the turbulent geological past of Oregon and specifically the Willamette Valley wine area. The Flâneur wines will be paired with an exciting menu of northwestern cuisine.

Flâneur Wines is dedicated to creating distinct and Memorable Willamette Valley wines that tell the story of time and place with each sip.

\$90 per person includes food, wine, tax, and tip.
Seating is limited. Reservations must be paid in advance.

Buy your tickets online now at
bit.ly/geowine2020

Reservations can also be made by check to the
Shreveport Geological Society
P.O. Box 750
Shreveport, LA 71162

Call 318-221-3329 for more information.

Like what you see?

Fill out and mail in this form or find it online at SGS1.org.

You can renew online instead
of filling out this card!

★ www.sgs1.org ★

Active \$25 / yr	
Associate \$25 / yr	
Honorary \$0 / yr	
Student \$5 / yr	
Optional Donation SGS Scholarship Fund	
Optional Donation Faithful Friends	
Total Payment	

NAME (Please Print) _____

Check if new applicant or change of address.

SHREVEPORT GEOLOGICAL SOCIETY, P.O. BOX 750 • SHREVEPORT, LA 71162

DATE _____

APPLICANT OR MEMBER PLEASE TYPE OR PRINT

LAST NAME	FIRST	INITIAL	NICKNAME			
COMPANY			POSITION OR TITLE			
COMPANY MAILING ADDRESS		CITY	STATE	ZIP	COMPANY PHONE	
HOME ADDRESS		CITY	STATE	ZIP	HOME PHONE	
FAX NUMBER		E-MAIL ADDRESS		CELL PHONE		
SCHOOL	DEGREE	MAJOR	YEAR			
PROFESSIONAL AFFILIATIONS	AAPG <input type="checkbox"/> APGS <input type="checkbox"/>	GSA <input type="checkbox"/> PS <input type="checkbox"/>	SEG <input type="checkbox"/> AGI <input type="checkbox"/>	SEPM <input type="checkbox"/> SIPES <input type="checkbox"/>	AIME <input type="checkbox"/> SPE <input type="checkbox"/>	SPWLA <input type="checkbox"/> OTHER <input type="checkbox"/>
OUTLINE OF EXPERIENCE _____					PREFERRED MAILING ADDRESS <input type="checkbox"/> HOME <input type="checkbox"/> BUSINESS <input type="checkbox"/> EMAIL ME THE NEWSLETTER (no printed copy will be mailed)	
SPOUSE'S NAME _____						

QUALIFICATIONS FROM BY-LAWS

In order to be eligible for active membership, an applicant shall be engaged in the practice or teaching of geology or related sciences.

In order to be an associate member, an applicant shall be interested in geological science but not actively engaged in the practice or teaching of geology or related sciences.

TO THE EXECUTIVE BOARD:

I hereby apply for ACTIVE ASSOCIATE membership in SHREVEPORT GEOLOGICAL SOCIETY and pledge myself to abide by its Constitution and By-laws.

Date: _____ Signature: _____

SPACE BELOW TO BE USED FOR PROCESSING ONLY

Membership Committee

Received: _____

Approved for: Active
 Associate
 Student

Executive Board

Approved: _____ SECRETARY

Date: _____