

Shreveport Geological Society **NEWSLETTER**

Volume 66, No. 1

September 2021

2021 – 2022 Shreveport Geological Society Board of Directors



Meet the Board p. 5

Alaska: The Last Frontier p. 13

Golf Tournament p. 19

Latest LA & TX Permits p. 25



SGS1.ORG

Message from



the President

Hello SGS Members! I hope this newsletter finds you happy, healthy, and in the shade.

We thought we were out of the woods, but it seems that may not be the case. With COVID-19 cases continuing to rise and hospitals running out of bed space, the threat of the pandemic just won't go away. At the time of the last SGS newsletter published before summer break (May 2021), things were beginning to change for the better: the US was averaging below 50,000 new cases per day, stores and restaurants were beginning to return to normal, mask mandates were being lifted, and air travel was becoming popular again. Fast forward to where we are today: daily average case numbers are back above 100,000, mask mandates are being reinstated, and some areas of our country are even considering new lockdowns. The summer months brought lots of change surrounding the pandemic, but the divided nature of our nation is something that was certainly left unchanged. Are these new restrictions justified? Is there really a right answer? Only time will tell.

The summer months, however, did bring some positive changes as well. While WTI crude prices averaged \$39.68 per barrel in 2020, the economic recovery of 2021 has driven prices back up to the \$65 - \$70 range. A similar story has unfolded in the natural gas market, with prices moving from an average of \$2.05/mcf in 2020 to the \$3.50 - 4.00/mcf range over the last few months. One can only hope that the economic recovery will continue and that these prices will be supported through the so-called "Great Reopening."

Summer in the South always comes with one unavoidable

aspect: the heat. While we had a mild beginning to the summer season, July and August seemed destined to change that. We can't get too bummed out about the heat though, as a portion of the recent rise in natural gas prices can be attributed to power demand from all of the AC units running! If your significant other likes to keep the house as cold as mine does, I am sure we are all doing our parts to support natural gas prices.

I would like to extend a big thank you to the SGS Board Members that rolled off over the summer break: Matthew Chumley, who served as President for 2020-21, Sarah Wilkes, who served as 1st Vice President for 2020-21, and Jamey Walker, who served as director for continuing education courses. During a year that was not easy for anyone, these three individuals did an incredible job of keeping SGS running smoothly. I would like to also welcome the new board members for 2021-22: Kelly Byram, Will Downs, and Kurt Ley. I am sure they will all do an excellent job serving SGS over the next three years.

The 28th Annual ALTAPL/SGS Golf Tournament is being held on Friday, September 24, 2021 at East Ridge Country Club. Spots are filling up fast, so I encourage you to sign up ASAP if you would like to participate!

Michael Danos has the rewarding job of Program Director this year as our 2nd Vice President and I know he has an exciting lineup of speakers on the schedule. Our first member meeting will be on September 21, 2021. We will have the pleasure of hearing from George W. Roth about "Exploration for Precious and Base Metals in Alaska: The Last Frontier." We are working to offer our member meetings in both an in-person and virtual format to allow for more people to enjoy the speakers.

I hope to see many of you at our events this year and I am looking forward to a more normal SGS season compared to what we went through in 2020.

Best regards,
Ian M. Byram

Faithful Friends 2020 - 2021

River Rouge Minerals	Charles Gerard
Grigsby Petroleum	Anthony Spano
Sugar Creek Producing Company	Sartor-Richardson
Hill Geophysical Consulting	Wild Oak Gas Company
William Hart	Geological Drafting Consultants, Inc.
Stuart Oden	SGC Energy Consulting LLC
Jon E. Saye	Mark Schroeder
Grant E. Black	John Watkins
Matthew Chumley	William Meaney
Scott Caswell	William Downs
Arthur Trowbridge	Ber-Ex-Co, Inc.
Williamson & Associates, LLC	Milbird Resources
David Billingsley, Jr.	Prospective Oil & Gas, LLC
Steve White	Chris Franks
T.W. McGuire & Associates	Louise Pearce
Phillip Smith	Windell Phillips
John E. Atkins	Clifford Leonard

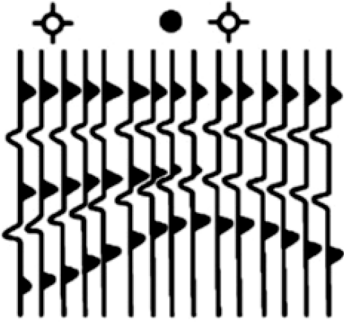
To be a Faithful Friend for 2021-2022,
please contact Kurt Ley.

Invest in the Future

You can **donate** to the SGS Scholarship Fund online at SGS1.org or by writing a check to the SGS with "Scholarship" in the memo line, and you may include an "**in memory of**" or "**in honor of**" note as well.

Mail to: Shreveport Geological Society,
P.O Box 750, Shreveport, LA 71162.

Hill Geophysical Consulting



Kevin B. Hill

*Integrating Geophysical Technology
with Geology*

**What's Under Your
Feet? Find out:
HILLGEO.COM**



415 TEXAS ST., SUITE 200
SHREVEPORT, LA 71101

318.221.3329
kevin@hillgeo.com



Camterra Resources

Main Office

2615 East End Blvd. South
Marshall, Texas 75672
Telephone: (903) 938-9949
Fax: (903) 935-0521

Dallas Office

100 Crescent Court
Suite 1800
Dallas, TX 75201
Telephone: (214) 310-0512

www.camterra.com

Chief Executive Officer: Zach Carlile

President: Paul Marchand

Land Manager/General Counsel: Allen Staggers

Asst. General Counsel: Pam Johnson

Director of Operations and Engineering: Jim Larkin

Sr. Landman: Jason Derebery

Landman/Gas Marketing/Regulatory: Josh Searle

Seeking Opportunities in Texas, Louisiana, Arkansas, Mississippi, and New Mexico

Meet The Board



President Ian M. Byram is a geologist working for Heritage Energy Company and EGH Operating, LLC. This is his third year on the SGS Board, and he is honored to serve as the Board's President. Ian graduated in geology and business from SMU and received his M.S. in geology from Baylor University. He enjoys hunting, gardening, snowboarding, mountain biking, hiking, and anything else involving the outdoors.



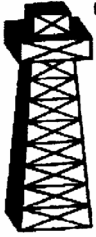
First Vice President Kurt Ley began his career as a geologist for Superior Oil in 1981. He later worked for Tenneco, Apache, and Stroud Production before co-founding Kingwood Exploration in 2007. He has served on several industry and local boards, and was SGS President in 2008. Kurt and his wife Patti stay busy with their 7 grandchildren, but in their spare time, they enjoy traveling – splitting their trips between mountain hikes and the beach.



Second Vice President Michael Danos holds a Bachelor of Science Degree in Business Administration and Finance from Northwestern State University. He has worked throughout the oilfield since 1994 gaining a background that includes offshore construction, gas cryogenics, and field geology. Michael cofounded Toledo Mudlogging in 2002 and became President in 2013, a position that he currently holds. In his free time, Michael enjoys hunting & fishing with his kids and friends. He is honored to serve on the SGS Board, an organization to which he has belonged for many years.

WHEN IT HAS
TO BE DONE
FAST!

400 TRAVIS ST.
SUITE 1606
S'PORT, LA
71101



COMPUTER
MAPPING FOR
THE OIL & GAS
INDUSTRY.
COLOR PLOTTING
AND DIGITIZING.

JOHN
HARRELL,
OWNER
ANDY
CARDIN,
DRAFTSMAN

PHONE

221-7780



skrivanos
engineering, inc.

Meet The Board

(continued)



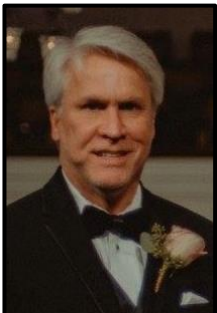
Secretary Gary Abrams is approaching 19 years at Stroud Exploration. Graduated with a BS in geology from Vanderbilt University and and MS from the University of Texas at El Paso. Actively working TX, LA and MS. Served previously as VP and President of SGS as well as President of SPDA. Enjoys sports activities, traveling as well as time at Lake Bistineau.



Treasurer Kevin McMaster has worked as a geologist in Shreveport for most of the past 36 years. Since 2015, he has been working as a consultant for numerous companies in Dallas and Shreveport. Prior to 2015, he worked for SM Energy in Shreveport and Tulsa for almost 14 years. He has previously served on the board and as an officer for the Shreveport Geological Society.



Board Member Bezany Branton has been a geologist at Jones Environmental, Inc. for 17 years. She moved from Venezuela in 1997 to attend Louisiana Tech University. She graduated with a BS in Geology in 2002. In her free time, she enjoys spending time with her adorable kids, Leo and Vanessa.



Board Member Kelly Byram is currently a geologist for TYGR Energy. He has spent his career generating prospects in the Ark-La-Tex for various companies including Crystal Oil, Medallion Production Co., KCS Resources and Petrohawk Energy. Kelly is a private pilot who enjoys flying whenever and wherever he can. He is married and has two sons and a daughter.



PALMER PETROLEUM, INC.

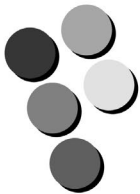
Exploration and Development • Operations • Oil and Gas Investments

330 Marshall Street, Suite 1200
Shreveport, Louisiana 71101

Phone: (318) 222-0517

www.palmerpetro.com

Fax: (318) 424-3256



Paragon

P R E S S

DESIGN PRINT MAIL

318-868-3351

www.ParagonPress.net



Meet The Board

(continued)



Board Member Stuart Oden is manager of Oden & Assoc., LLC, an exploration company which was formed in 1996 focusing on exploration in South Louisiana and East Texas. He graduated from the Citadel (1975) and LSU -BR (1978) with an MS degree in geology. Stuart went to work for Sun Oil Co. in 1978 and then on to Goodrich Oil Co. where he worked as a geologist for 16 yrs. He enjoys forestry, deer hunting, and most importantly LSU

baseball. He looks forward to working with and learning from the younger members of the SGS.



Board Member Will Downs is an established oil and gas industry executive with 40 years of experience in public and private E&P, A&D and service sectors. He earned a B.S. in Geology from Centenary College of Louisiana.



Executive Assistant to the Board Annie Green is a Geotech for Nadel and Gussman. She serves as SGS's Executive Assistant to the Board and Publication Committee Chairman. She also serves on the boards of Haughton Metropolitan Planning Commission, Christmas in Haughton, and National Night Out. In her free time, Annie enjoys outdoor adventures with her husband and three sons.

Join our group on

LinkedIn

Keep in Touch

through the Shreveport Geological
Society LinkedIn Group.



MILESTONE ENERGY, LLC

Oil & Gas Exploration and Development

Joseph A. Lott

Geologist / Managing Partner

Zach Kelly
Geologist

Zach McDonald
Geologist

Thomas A. Giles
Land Manager

333 Texas Street, Suite 516
Shreveport, Louisiana 71101
jlott100@bellsouth.net

Office: 318.212.0470
Fax: 318.212.0469

- Looking for Prospects
- Geophysical Consultant
- Landmark Graphics Corp. Software
- Synthetic Seismograms, modeling and cross sections



- Digitizing capability
- 2-D & 3-D Seismic Acquisition, Processing & Interpretation
- SeisVision 2-D & 3-D interpretation and mapping software

Bobbie Ben Taylor - President

O: 120 S Broadway, Suite 102
Tyler, Texas 75702
Mobile: (903) 521-3182

H: 7130 Holly Square Court
Tyler, Texas 75703
Email: taylor@webfoxmail.com

LOOKING FOR PROSPECTS

Let me tailor your geophysical needs.

HALLIBURTON

Do you require an integrated approach to total well construction, formation evaluation, and optimized production? Make the jump to our team. We have the best local people for designing your well, performing state of the art formation evaluation, and planning and executing your completion.

Logging & Perforating
Production Enhancement (Stimulation)

Cementing
Security Bits
Tools, Packers, & TCP
Coli Tubing Services

Shreveport Sales 318-673-4400
Tyler sales 903-581-5263
Kilgore Operations 1-800-654-6926



www.lmkr.com



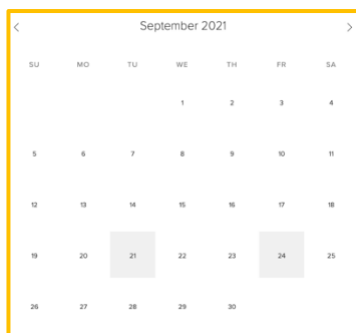
Jeremy Stuhr
Account Executive

jsuhr@lmkr.com
P : +1 281 848 3319
C : +1 346 313 5377
F : +1 281 879 0135



LMK Resources Inc.
6051 North Course Drive Suite 300
Houston, TX. 77072 USA

Calendar of Events



View this interactive calendar at [SGS1.org](https://www.sgs1.org)

September 17

RSVP for the monthly meeting

September 21

Monthly Meeting

George W. Roth presents

“Exploration for Precious and Base Metals in
Alaska: The Last Frontier”

In-person 11:30 a.m. - 1 p.m.; Petroleum Club 15th Floor
Virtual 12:00 p.m. - 1 p.m. Zoom

September 24

ALTAPL/SGS Golf Tournament

October 27-29

GeoGulf 2021 in Austin, TX

On the Cover: The 2021-2022 Shreveport Geological Society Board of Directors, photographed by Brenda Pender.

Interior Art: Page 1 “Series in White #2” (*detail*) by Christine Bailey, showing at the Bailey Art Gallery through September 30.

Page 13 “Leviathan” (*detail*) by Jerry Wray, showing at the Louisiana State Exhibit Museum through September 24.

Got news? Geology photos for the cover? Meeting page art?

Email it to the editor today: 1RachelMcNerney@gmail.com



Jerry W. Taylor

Consulting Geologist, LLC

17377 LAUREN DRIVE
PRAIRIEVILLE, LA 70769

1-(225)-287-8342

JWTGEOLOGY@GMAIL.COM

WWW.JWTGEOLOGY.COM

R. LACY / CRAIN ENERGY

*Oil and Gas Investments
Exploration and Development*

222 EAST TYLER STREET
LONGVIEW, TX 75601
903-758-8276 (O)

Chris Bresch
V.P. Exploration
cbresch@rlacy.com

Hunter Brumble
Staff Geoscientist
hbrumble@rlacy.com

Scott Caswell
Sr. Geophysicist/Geoscientist
scaswell@rlacy.com



Address: 5395 Pearl Prkwy, Ste. 200
Boulder, CO 80301
Telephone: (303) 541-1559
Fax: (303) 443-1551

&

Address: 401 Edwards St., Ste. 1601
Shreveport, LA 71101
Telephone: (318) 227-8668
Fax: (318) 227-9012

Operating in the MAFla, ArkLaTex,
and WY

MUSLOW OIL & GAS, INC.

330 Marshall Street
Suite 628
Shreveport, LA 71101

Eric Weiss
President

(318) 221-8694
Fax: (318) 227-2106

The September Meeting

Make your
RESERVATION

George W. Roth

presents

“Exploration for Precious and Base Metals in
Alaska: The Last Frontier”

Tuesday, September 21

Virtual

12:00 p.m. Zoom

\$10

In-Person

11:30 a.m. Petroleum Club of Shreveport

\$20 (Children 10 and under \$8)

We encourage members to invite guests, spouses, and
friends to any of our meetings.

If you'd like a seat, kindly **RSVP**
by **Friday, September 17** at [SGS1.org](https://www.sgs1.org)

g.w. Roth

Kingwood Exploration, LLC
Oil & Gas Exploration
and Production



Kurt M. Ley

Exploration Manager & Partner

Robert E. Braswell

Engineering/Operations Manager & Partner

416 Travis St., Suite 1100
Shreveport, LA 71101

Phone: 318-946-8585
Fax: 318-946-8287

kurt.ley@kingwoodexploration.com
robert.braswell@kingwoodexploration.com



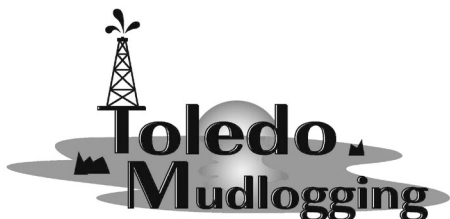
Established by G.M. Anderson

333 TEXAS ST., SUITE 2020

SHREVEPORT, LA 71101-5357

Phone: (318) 227-2000

Fax: (318) 425-5935



★ Many, LA

★ Midland, TX

The Horizontal Specialists!!

We work with the greatest companies
in the world, please give us a call
to see what we can do for you!!

Joe Eidson 318-623-5435

Michael Danos 318-332-7673

20 Ford Road, Many, LA 71449

Security Exploration, Inc.

8509 Line Avenue
Shreveport, LA 71106



J. Stafford Comegys
President

Donna Walker
Geologist

Barbara Lyles
Office Manager

OIL & GAS EXPLORATION

Tel: (318) 222-1066

Fax: (318) 222-4932

George W. Roth

George W. Roth has 46 years of exploration and development experience in oil and gas and precious and base metals both internationally and domestically.

George received a BS in Geology in 1974 from Buffalo State University, Buffalo, New York, and did Post Graduate work in Hydrogeology at Wright State University, Ohio, and Post Graduate work in Structural Geology at the University of Texas at Dallas.



He began his career in 1975 in the Rockies with Core Laboratories and was the Chief Development Geologist for W. R. Grace and the Chief Geologist, Frontier Division of Hunt Oil Company in Denver. In 1989 George was transferred to Dallas with Hunt Oil and continued exploring in frontier basins from Alaska to the Canadian Maritimes. In 1995 he was assigned to the Indian Ocean Passive Margin Team with Hunt Overseas as Team Leader and evaluated the hydrocarbon potential of 19 basins from South Africa to the East Coast of India. In 2001 he joined Range Resources Corp in Fort Worth and worked on a variety of projects in East Texas, Louisiana, and the Appalachian Basin.

Burnett Oil hired George in 2014 to be the V.P. of Exploration for the private family company in Fort Worth, and since 2017 he has been a consulting geologist for Chisholm Energy working in the Permian Basin and continues to evaluate the precious and base metal potential of Alaska through Crooked Creek Exploration LLC.

George is an Emeritus member of the AAPG, and a member of the Rocky Mountain Association of Geologists, the Fort Worth Geological Society, SIPES, and the Alaska Miners Association. He is a Registered Professional Geologist in the State of Wyoming.

THE PETROLEUM CLUB OF SHREVEPORT

Serving delectable cuisine to the
Shreveport Geological Society
regular luncheon meetings.

318-425-4251



**David Meadows
Manager**

Mid South Tower Bldg.
416 Travis Street, Suite 1414
Shreveport, LA 71101

Phone: 318-425-7617
Fax: 318-425-1385
Email: jmexploration@comcast.net

BRAMMER ENGINEERING, INC.

Services:

- **Drilling**
- **Completion**
- **Construction**
- **Production**
- **HSE**
- **Regulatory**
- **Land**
- **Accounting**
- **Risk Management**
- **Information Systems**



www.brammer.com
318.429.2345 o • 318.429.2340 f

401 Edwards Street, Suite 1510, Shreveport, LA 71101

WLS CORPORATION

**OIL & GAS
EXPLORATION & PRODUCTION**

**Wayne L. Simpson
President**

**Philip Davis
Geologist**

416 Travis Street, Suite 1006
Shreveport, Louisiana 71101

Office: (318) 425-2978
Fax: (318) 425-3166

Abstract

“Exploration for Precious and Base Metals in Alaska: The Last Frontier”

Alaska’s 67 diverse metallogenic mining regions and districts has an underexplored base and precious mineral-resource potential, and currently hosts several world class deposits with over 50 million ounces of lode gold discovered since 1996 making Alaska a Top Tier mining jurisdiction. Alaska ranks 7th worldwide for mineral potential, “Best Practices Mineral Potential” (Fraser Inst. 2020), and 4th worldwide for investment attractiveness (Fraser Inst. 2020). However, 67% of the known placer districts do not have an associated lode gold deposit; therefore discovery potential of additional large ore deposits is great.

Alaska has 6 lode mines producing gold and base metals, 1 coal mine, more than 200 placer gold workings, and at least 35 active advanced – through early stage, lode exploration projects. The U.S. depends on foreign sources for more than 50% of its supply of 31 of the 35 minerals considered critical to the nation’s economic and national security, including 100% import-reliance for 14 of these. Gold is considered a pathfinder mineral to six of these critical metals which can often be found in association with placer and lode gold deposits in Alaska. The Tintina Gold Belt of central Alaska is 150,000+ sq. km. (2x Permian Basin) it is particularly well endowed with large intrusion related gold systems (IRG) and the critical minerals associated with them. Alaska’s total exploration spending in 2020 was approximately \$111 million, 41% of this budget was directed toward mine site exploration, an all-time high.

In 1971 Nixon signed the Alaska Native Claims Settlement Act (ANSCA) into law. The Act established 13 regional and 224 village corporations giving native ownership to lands throughout the state, which today total 38 million acres approximately 12% of Alaska. Unlike the Lower 48 tribes the Alaska Native Corporations have sovereignty over these lands making them a unique exploration partner.

Baldwin Madden Energy, LLC

*Oil and Gas Property
Acquisitions and Development*

George A. Baldwin, Jr.

Gregory K. Madden

Christopher D. Franks
Senior Geologist

Lonnie J. Shaw
Director of Accounting & Finance

(318) 429-2220

(318) 429-2229 Fax

333 Texas Street, Suite 1919
Shreveport, LA 71101-3676

Reynolds Drilling Company, Inc.

7591 Fern Ave., Suite 2001
Shreveport, Louisiana 71105-5502

Phone: (318) 227-0118

Fax: (318) 227-0171

reydrill@bellsouth.net

Terry Pat Reynolds
President

STROUD PRODUCTION, LLC

333 Texas Street, Suite 860

Shreveport, Louisiana 71101-5302

Voice: (318) 429-2260

Fax: (318) 429 2255

Email: ras@spllc.com

Mike Rogers Drilling Co., Inc.

Drilling & Interest Participation

MIKE ROGERS, PRESIDENT
CRAIG ROGERS, VICE PRESIDENT

Office: 870-234-2356 • Fax: 870-234-7487

1708 N. Vine Street • P. O. Box 126 • Magnolia, AR 71754
email: mrdc1981@gmail.com

ALTAPL/SGS Golf Tournament

Friday, September 24, 2021

Dear Friends and Sponsors of the Shreveport Geological and Ark-La-Tex Landman Societies: It's that time of the year again to announce the upcoming **SGS/ALTAPL Golf Tournament** to be held at **East Ridge Country Club** on **Friday, September 24, 2021**. The event will kick off with lunch beginning at 11:30 a.m. and proceed with a shotgun start at 1:00 p.m. followed by an evening of food and door prizes made possible by your sponsorship donations.

Please consider and respond as soon as possible with your much-appreciated sponsorship, so a realistic budget can be proposed by our planning committee. A prompt response will also assure that your contribution will be affirmed and recognized by all in attendance. All sponsors will be included on a banner which will be displayed at check-in and at the awards reception.

We look forward to your involvement not only in sponsorship, but also in the camaraderie of the golf tournament.

The golf entry fee includes green fees, golf cart, golf apparel, hamburger bar lunch, hors d'oeuvres dinner, beverages, and door prizes. The Social Fee includes dinner, beverages, door prizes and entertainment. **The social fee must be paid ahead of time as no money will be collected at the door.*

The golf tournament will be a flighted four man scramble. Assemble your foursome with all handicaps as well as **contact phone number, email address** and **SHIRT SIZE (or we will give you a smedium)**.

A handicap **MUST** be listed for each member of your foursome in order to properly flight the teams. Prizes will be rewarded for flight winners, hole-in-ones, closest to the hole on all par threes and winners of the long drive contests.



Shreveport Petroleum Data Assn., Inc.

333 Texas Street, Suite 900

Shreveport, LA 71101

(318) 429-2237

Fax (318) 429-2441

Website : www.spdalogs.org

spda@spdalogs.org

Cindy Shepherd

Manager



Bobby E. Jelks
President

Faith N. Gilbert
CFO

P. O. Box 7665
Shreveport, LA 71135-7665

Edward Yarborough
Exploration Manager

Phone: (318) 221-2688

Fax: (318) 459-2935

James Light
Land Manager



GEOVENTURES™

Ashley Garcia

Assistant Program Manager

Main +1 713 789 7250

Direct +1 281 781 1005

Fax +1 713 789 7201

Mobile +1 281 239 4576

ashley.garcia@iongeo.com

2105 City West Blvd., Ste. 900
Houston, TX 77042-2837 USA iongeo.com



L. CHRIS JOHNSON
Manager

2650 Fairfield Ave
Shreveport, LA 71104
BUS:(318) 222-6652
FAX: (318) 222-6673
cjohnson@jerlic.com

GRIGSBY PETROLEUM, INC.

**Oil & Gas Exploration
and Production**

**333 Texas St., Suite 2285
Shreveport, LA 71101
Phone (318) 425-5306
Fax (318) 425-3733**

David L. Billingsley, Jr.
Certified Petroleum Geologist

400 Travis Street, Suite 1230
Shreveport, LA 71101
DLBJR1@aol.com

Cell Phone
(318) 426-4320



OIL AND GAS

DIANA L. CHANCE
MANAGING DIRECTOR

P. O. Box 1346 SHREVEPORT, LA 71164
(318) 227-2131 • FAX: (318) 222-5832
CELL: (318) 347-8848
WWW.DONNERPROPERTIES.COM

ALTAPL/SGS Golf Tournament

Friday, September 24, 2021

(continued)

Due to the overwhelming popularity of this annual event, the tournament will be held for society members and guests only. **Please make sure your SGS & ALTAPL dues are current and please make sure team payment is made accordingly!**

The **deadline** for entering will be **Friday, September 10, 2021** and will be limited to a first come first served basis. The field is **LIMITED TO 32 TEAMS**, as there will **ONLY** be an **AFTERNOON, 1:00 p.m. TEE TIME THIS YEAR.**

The event will kick off with lunch beginning at 11:30 a.m. and proceed with a shotgun start at 1:00 p.m. followed by an evening of food, beverages, awards and door prizes.

If you have any questions please call us at the numbers listed or email us at the.altapl@gmail.com.

Sincerely,

Your 2021 Tournament Committee

2021 Tournament Committee

Preston Smith
318-537-0706

Kenneth Favrot
318-349-0731

Cody Lenert
318-455-2962

Hunter Temple
318-243-1134

Adam Choate
318-393-8266

Email us at
the.altapl@gmail.com

Please find entry forms and more online: altapl.org.



Thomas C. Wyche

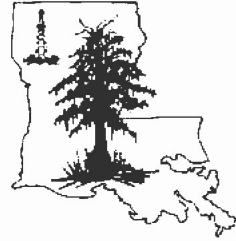
CERTIFIED PETROLEUM GEOLOGIST

Horizontal & Vertical Projects
E.Tx., N.La., S.Ark.

333 Texas St., Suite 703
Shreveport, LA 71101
318.465.2944
geo1tcw@gmail.com

LA-PG
AAPG-CPG

Cypress Operating, Inc.



STEVEN A. SINGLETARY
BEN ROBINSON

Petroleum Geologists

Office: (318) 424-2031
Fax: (318) 425-8140

330 Marshall Street, Suite 930
Shreveport, LA 71101



EXPLORATION, L.L.C.

401 Edwards Street, Suite 1200
Shreveport, LA 71101

P.O. Box 1367
Shreveport, LA 71164

office: (318) 222-8406
fax: (318) 222-6061
email: mei@marlinexploration.com

Jon Q=Petersen
President

S. Cody Lenert
Geologist

Autie T. Orjias
V.P./Land Manager

Ryan Q=Petersen
Land

Dean Giles
Secretary/Treasurer



Seismic Exchange, Inc.

Strategic Speculative Surveys
Geophysical Data Marketing & Management

YOUR
Full Service
National
Seismic Data
Marketing Firm

Marketing contact:
Layne Williams
lwilliams@seismicexchange.com

DALLAS DENVER HOUSTON NEW ORLEANS TULSA

201 St Charles Ave., Suite 4300
New Orleans, LA 70170
(D) 504-510-2508 (C) 504-458-3056

www.seismicexchange.com

Photos from the May 2021 Meeting

Photos by Matthew Chumley

Chris Sumner presented “Geology of Bellevue Salt Dome and EOR Overview - A regional view of the past, present and what is needed in the future.” Incoming SGS president Ian Byram thanked departing board members, including Jamey Walker and Sarah Kaye Wilkes, for their service.



BER-EX-CO., INC.

Orville Roger Berg, Ph.D.

Exploration, Exploitation
Seismic Evaluation
Domestic, International

400 Travis St., Suite 1612
Shreveport, LA 71101-3108
(318) 220-0300
orberg@bellsouth.net

9949 Beaver Creek Drive
Shreveport, LA 71106
(318) 798-1748

GERARD ASSOCIATES, L.C.

OIL & GAS EXPLORATION
DEVELOPMENT AND ACQUISITIONS

J. A. Wojtkiewicz • Charles Gerard

625 Market St., Suite 250
Shreveport, LA 71101
Tel. (318) 221-0761 • FAX (318) 221-8835

ODEN & ASSOCIATES, LLC

Oil and Gas Exploration
Phone: 318-222-2400
Fax: 318-226-0840



ALAN SCHLICHTEMIER
Geologist

P.O. Box 1806
Shreveport, LA 71166

416 Travis Street, Ste. 400
Shreveport, LA 71101
odenassoc@bellsouth.net



Kalmbach
Production Company, LLC

Sam Kalmbach
Geologist

400 Travis Street, Ste. 516 office: (318) 424-6566
Shreveport, LA 71101 cell (318) 470-9977
e-mail: sam.geo.kpc@gmail.com

BARROW-SHAVER **RESOURCES COMPANY**

Oil & Gas Exploration & Development

Scott Owen Shaver
Managing Partner and Exploration Manager

903-593-5221 Office
903-593-1692 Fax
903-561-4711 Home
903-582-4711 Farm
903-245-4999 Mobile

977 Pruitt Place
Tyler, Texas 75703
sos-bsr@tyler.net



Drilling Contractor
Oil & Gas Operator
Turnkey Services
Well Service & Workover
Working Interest Participant

318-992-4111
P. O. Box 2990, Jena, LA 71342
justissoil.com

CAPLIS FORESTRY, LLC

JEFFREY W. CAPLIS

-CONSULTING FORESTER-

CELL: 318-617-9016
OFFICE: 318-752-3662
586 CAPLIS SLIGO RD.
BOSSIER CITY, LA 71112

-complete forestry services-

- Timber Appraisals • Timber Management • Timber Cruising •
- Damage Appraisals • Tree Planting •

B.S. LOUISIANA TECH: SCHOOL OF FORESTRY

Monthly Permits – July 2021

Provided by ABCD GIS Mapping

Texas Permits

AppDate	County	API	Operator	Purpose	TD
7/1/21	RUSK	40134813	SABINE OIL & GAS CORPORATION (742143)	Recompletion	10643
7/1/21	PANOLA	36532948	TGNR EAST TEXAS LLC (850990)	Recompletion	9640
7/2/21	HARRISON	20301473	SHERIDAN PRODUCTION CO III, LLC (775851)	Reclass	6500
7/6/21	PANOLA	36538660	SABINE OIL & GAS CORPORATION (742143)	New Drill	12000
7/6/21	PANOLA	36538661	SABINE OIL & GAS CORPORATION (742143)	New Drill	12000
7/6/21	PANOLA	36538662	SABINE OIL & GAS CORPORATION (742143)	New Drill	12000
7/6/21	PANOLA	36538663	SABINE OIL & GAS CORPORATION (742143)	New Drill	12000
7/6/21	HARRISON	20332470	SHELBY OPERATING COMPANY (773678)	Recompletion	3984
7/6/21	PANOLA	36538651	ROCKCLIFF ENERGY OPERATING LLC (722890)	New Drill	13000
7/7/21	SHELBY	41931819	LEGACY RESERVES OPERATING LP (495445)	New Drill	12000
7/7/21	SHELBY	41931820	LEGACY RESERVES OPERATING LP (495445)	New Drill	12000
7/7/21	PANOLA	36538550	TANOS EXPLORATION II, LLC (835976)	New Drill	9614
7/7/21	PANOLA	36532631	SHERIDAN PRODUCTION CO III, LLC (775851)	Reclass	9850
7/7/21	PANOLA	36538650	ROCKCLIFF ENERGY OPERATING LLC (722890)	New Drill	13000
7/8/21	PANOLA	36538619	ROCKCLIFF ENERGY OPERATING LLC (722890)	New Drill	13000
7/8/21	HARRISON	20335464	COMSTOCK OIL & GAS, LLC (170038)	New Drill	13000
7/9/21	RUSK	40181945	SCOUT ENERGY MANAGEMENT LLC (760218)	Recompletion	4100
7/9/21	PANOLA	36538671	SABINE OIL & GAS CORPORATION (742143)	New Drill	12000
7/9/21	PANOLA	36538672	SABINE OIL & GAS CORPORATION (742143)	New Drill	12000
7/9/21	PANOLA	36538659	SABINE OIL & GAS CORPORATION (742143)	New Drill	12000
7/9/21	PANOLA	36538667	SABINE OIL & GAS CORPORATION (742143)	New Drill	12000
7/9/21	PANOLA	36538668	SABINE OIL & GAS CORPORATION (742143)	New Drill	12000
7/12/21	PANOLA	36538669	SABINE OIL & GAS CORPORATION (742143)	New Drill	12000
7/13/21	PANOLA	36538621	ROCKCLIFF ENERGY OPERATING LLC (722890)	New Drill	13000
7/13/21	PANOLA	36538670	SABINE OIL & GAS CORPORATION (742143)	New Drill	12000
7/13/21	PANOLA	36538673	SABINE OIL & GAS CORPORATION (742143)	New Drill	12000
7/13/21	RUSK	40135461	SABINE OIL & GAS CORPORATION (742143)	New Drill	11700
7/13/21	CASS	06730837	ROSE CITY RESOURCES, LLC (727892)	New Drill	11400
7/13/21	CASS	06730838	ROSE CITY RESOURCES, LLC (727892)	New Drill	11400
7/14/21	HARRISON	20333114	BROOKSTON ENERGY, INC. (097353)	Recompletion	9800
7/14/21	PANOLA	36538674	ROCKCLIFF ENERGY OPERATING LLC (722890)	New Drill	13000
7/14/21	PANOLA	36538675	ROCKCLIFF ENERGY OPERATING LLC (722890)	New Drill	13000
7/14/21	PANOLA	36538676	ROCKCLIFF ENERGY OPERATING LLC (722890)	New Drill	13000
7/14/21	PANOLA	36538677	ROCKCLIFF ENERGY OPERATING LLC (722890)	New Drill	13000
7/16/21	PANOLA	36538622	ROCKCLIFF ENERGY OPERATING LLC (722890)	New Drill	13000
7/16/21	PANOLA	36538625	ROCKCLIFF ENERGY OPERATING LLC (722890)	New Drill	13000
7/16/21	PANOLA	36538627	ROCKCLIFF ENERGY OPERATING LLC (722890)	New Drill	13000
7/20/21	SHELBY	41931300	SHERIDAN PRODUCTION CO III, LLC (775851)	Recompletion	12600
7/21/21	PANOLA	36538620	ROCKCLIFF ENERGY OPERATING LLC (722890)	New Drill	13000
7/22/21	ANGELINA	00530462	AETHON ENERGY OPERATING LLC (008555)	New Drill	16500
7/22/21	ANGELINA	00530463	AETHON ENERGY OPERATING LLC (008555)	New Drill	16500
7/22/21	CASS	06730839	ROSE CITY RESOURCES, LLC (727892)	New Drill	11400
7/23/21	SAN AUGUSTINE	40530732	AETHON ENERGY OPERATING LLC (008555)	New Drill	14000
7/23/21	SAN AUGUSTINE	40530733	AETHON ENERGY OPERATING LLC (008555)	New Drill	14000
7/26/21	HARRISON	20332124	MERIT ENERGY COMPANY (561136)	Recompletion	10105
7/27/21	GREGG	18331579	BUFFCO PRODUCTION INC. (106406)	Recompletion	10800
7/29/21	HARRISON	20335465	COMSTOCK OIL & GAS, LLC (170038)	New Drill	13000
7/29/21	PANOLA	36538648	KJ ENERGY, LLC (469901)	New Drill	9800
7/29/21	PANOLA	36538546	ROCKCLIFF ENERGY OPERATING LLC (722890)	New Drill	12000
7/30/21	RUSK	40135056	SABINE OIL & GAS CORPORATION (742143)	Recompletion	10608
7/30/21	HARRISON	20335466	ROCKCLIFF ENERGY OPERATING LLC (722890)	New Drill	13000
7/30/21	HARRISON	20335467	ROCKCLIFF ENERGY OPERATING LLC (722890)	New Drill	13000
7/30/21	HARRISON	20335468	ROCKCLIFF ENERGY OPERATING LLC (722890)	New Drill	13000

See Map and Louisiana Permits listed on following pages.



JON E. SAYE

PETROLEUM GEOLOGIST

Office: 318-221-4504
 Fax: 318-221-4516
 Cell: 318-458-1515

1015 Mid South Twr. • P. O. Box 137
 Shreveport, LA 71161
jsaye@prodigy.net

COUTRET & ASSOC., INC.

Petroleum Reservoir Engineers
 Property Evaluation, Reservoir Engineering
 Fluid Injection, Property Management

Louisiana Tower
 401 Edwards Street
 Shreveport, LA 71101

Telephone: (318) 221-0482
Fax: (318) 221-3202
E-mail: rmcgowen@coutret.com



GEOVENTURES™

Alvin Rowbatham
 Sales Manager

Main +1 713 789 7250
 Direct +1 281 781 1005
 Fax +1 713 789 7201
 Mobile +1 832 372 2366
alvin.rowbatham@iongeo.com

2105 City West Blvd., Ste. 900
 Houston, TX 77042-2837 USA iongeo.com



**Delta-T
 Geophysical
 Consulting, Inc.**

Comprehensive Geophysical Services

- Kingdom Suite 2d/3d pak
- Geographix
- GMA
- Neuralog
- Mesa 3-D Design
- Digirule

Woodie Huffman, CEO

401 Edwards Street, Suite 826
 Shreveport, LA 71101-5510

Phone: (318) 221-0414

Fax: (318) 425-0688

Email: delta@bellsouth.net

Williamson

OIL & GAS, INC.

Oil & Gas Development



Office: (318) 221-2923 400 Travis Street
 Fax: (318) 221-3488 Suite 1410
 Email: bob@williamsonogi.com Shreveport, LA 71101

Joe R. White, Jr.
 Petroleum Geologist

8505 Dogwood Trail
 Houghton, LA 71037

Cell. 318-423-9828

Hm. 318-949-3539

Available for Consulting

AAPG CPG #5580

MS RPG #0097

LA CPG #345

Jwhite1362@aol.com

Joerjrw@gmail.com

Cowgill & Associates, L.L.C.

Oil & Gas Exploration & Production

Stephen C. Cowgill
 Geologist/Managing Partner

P. O. Box 72180
 Bossier City, LA 71172-2180
cowgill@suddenlink.net

Office: 318.429.2170
 Fax: 318.429.1170
 Cell: 318.455.9516

CSC ENERGY CORP.

OIL & GAS EXPLORATION

Joel B. Chevalier
 PRESIDENT

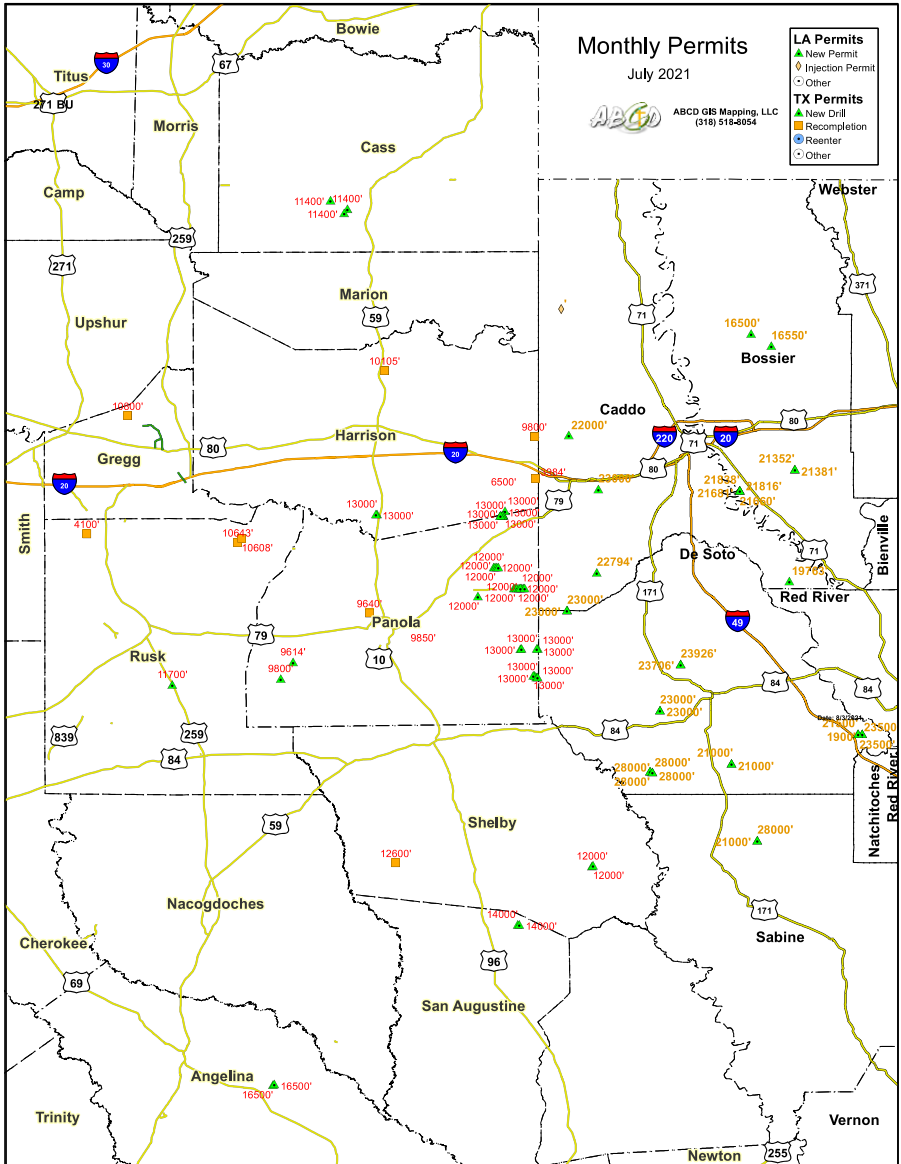
416 Travis Street
 Suite 507
 Shreveport, LA 71101

Mobile: (318) 469-5625
cscenergy@bellsouth.net

Monthly Permits – July 2021

Provided by ABCD GIS Mapping

Map



See Louisiana Permits listed on following page.



Craig C. Barclay
Petroleum Geologist, L.L.C.

10857 Sunrise Point Phone (318) 524-9920
Shreveport, LA 71106 Mobile (318) 426-2536
cbarclay1@comcast.net

WIRELINE
LOGGING
SOLUTIONS

Richard "Dick" Swindell
Technical Sales

Tyler, Texas
Mobile: 903.253.6226
richard.swindell@wirelinelogs.com
wirelinelogs.com

T. W. McGuire & Associates, Inc.

Registered Petroleum Engineers

416 Travis St., Suite 1400
P. O. Box 1763
Shreveport, LA 71166
(318) 222-0761
(318) 222-0799 Fax

James T. Maranto Robert T. Maranto

**BAKER
HUGHES**
a GE company



Jim Hankla
Sales
Southern US

M +1 903 312 8500
james.hankla@bhge.com



STROUD
Petroleum, Inc.

416 TRAVIS STREET ♦ SUITE 600
SHREVEPORT, LA 71101
PHONE ♦ (318) 425-0101
FAX ♦ (318) 425-2211

GARY ABRAMS
JOHN STROUD
GEOLOGISTS

JHM, LLC
OIL AND GAS EXPLORATION

Joe McDuff
Geologist

351 Chapel Loop 504.756.2000
Mandeville, LA 70471 jmcduff@att.net

DOWNNS

ENERGY ACQUISITIONS, LLC
OPERATING COMPANY, LLC

SHREVEPORT, LOUISIANA
318-716-7670
wdownns@downns-energy.com

Monthly Permits – July 2021

Provided by ABCD GIS Mapping

Louisiana Permits

Permit Date	County	Well SN	Operator	Well Name	Depth
7/1/21	CADDO	252866	EXCO OPERATING COMPANY, LP	HA RA SUNN;WARK 22-15 H	22000
7/8/21	CADDO	975848	FROG ISLAND LLC	STATE SWD	0
7/9/21	DE SOTO	252871	COMSTOCK OIL & GAS--LA, LLC	HA RA SUII;BSMC LA 5-8-17 HC	28000
7/9/21	DE SOTO	252872	COMSTOCK OIL & GAS--LA, LLC	HA RA SUII;BSMC LA 5-8-17 HC	28000
7/9/21	DE SOTO	252873	COMSTOCK OIL & GAS--LA, LLC	HA RA SUII;BSMC LA 5-8-17 HC	28000
7/9/21	DE SOTO	252874	COMSTOCK OIL & GAS--LA, LLC	HA RA SUII;BSMC LA 5-8-17 HC	28000
7/12/21	BOSSIER	252877	AETHON ENERGY OPERATING LLC	HA RA SUD;COWLEY 25-24 HC	21816
7/12/21	BOSSIER	252878	AETHON ENERGY OPERATING LLC	HA RA SUD;COWLEY 25-24 HC	21660
7/12/21	BOSSIER	252879	AETHON ENERGY OPERATING LLC	HA RA SUD;COWLEY 25-24 HC	21681
7/12/21	BOSSIER	252880	AETHON ENERGY OPERATING LLC	HA RA SUD;COWLEY 25-24 HC	21838
7/19/21	DE SOTO	252884	COMSTOCK OIL & GAS--LA, LLC	HA RA SUW;MCCOY 28-33 HC	23000
7/19/21	DE SOTO	252885	COMSTOCK OIL & GAS--LA, LLC	HA RA SUW;MCCOY 28-33 HC	23000
7/19/21	RED RIVER	252887	GEP HAYNESVILLE, LLC	HA RA SUK;SCHION 13-24 HC	23000
7/20/21	CADDO	252889	GOODRICH PETROLEUM COMPANY	HA RA SU85;J COLLINS 29 H	23000
7/20/21	RED RIVER	252888	GEP HAYNESVILLE, LLC	HA RA SUL;SCHION 18-19 HC	23000
7/21/21	DE SOTO	252898	VINE ENERGY OPERATING LP	HA RA SUGG;SAN PAT 26-23 HC	21000
7/21/21	DE SOTO	252899	VINE ENERGY OPERATING LP	HA RA SUGG;SAN PAT 26-23 HC	21000
7/22/21	CADDO	252901	CHESAPEAKE OPERATING, L.L.C.	HA RA SU67;MAIDEN20&17-15-15HC	22794
7/22/21	CADDO	252902	CHESAPEAKE OPERATING, L.L.C.	HA RB SUD;PEIR 26&23-15-12 HC	19763
7/23/21	BOSSIER	252903	EMPRESA OPERATING, LLC	VUA;JACKSON 27-16 H	16550
7/23/21	BOSSIER	252904	EMPRESA OPERATING, LLC	VUA;RIVERS 18-12 H	16500
7/23/21	DE SOTO	252906	CHESAPEAKE OPERATING, L.L.C.	HA RA SUY;GILLIAM23&14-13-14HC	23926
7/23/21	DE SOTO	252907	CHESAPEAKE OPERATING, L.L.C.	HA RA SUY;GILLIAM23&14-13-14HC	23706
7/23/21	WEBSTER	252905	COMSTOCK OIL & GAS--LA, LLC	HA RA SUO;MATTHEWS 27-22-15 HC	29000
7/28/21	BOSSIER	252912	ENSIGHT IV ENERGY MANAGEMENT, LLC	HA RA SU56;MCGUIRE 12-1 HC	21352
7/28/21	BOSSIER	252913	ENSIGHT IV ENERGY MANAGEMENT, LLC	HA RA SU56;MCGUIRE 12-1 HC	21381
7/28/21	DE SOTO	252909	VINE ENERGY OPERATING LP	HA RA SUB;FLORES 7-18 HC	23500
7/28/21	DE SOTO	252911	VINE ENERGY OPERATING LP	HA RB SUHH;RUFFIN 6-31 HC	23500
7/29/21	CADDO	252918	GOODRICH PETROLEUM COMPANY	HA RA SUN;GRAHAM 15 & 10 HC	23000
7/29/21	CADDO	252919	GOODRICH PETROLEUM COMPANY	HA RA SUN;GRAHAM 15 & 10 HC	23000
7/29/21	DE SOTO	252914	VINE ENERGY OPERATING LP	HA RA SUB;RUFFIN 7-18 HC	1900
7/29/21	DE SOTO	252915	VINE ENERGY OPERATING LP	HA RA SUB;FLORES 7-18 HC	21500
7/29/21	SABINE	252916	VINE ENERGY OPERATING LP	HA RA SUFF;CHKMIN 20-29-32 HC	28000
7/29/21	SABINE	252917	VINE ENERGY OPERATING LP	HA RA SUFF;CHKMIN 20-29 HC	21000

See Map and Texas Permits listed on previous pages.



Will-Drill Resources, Inc.

Rick Holland: Geology
Bret Hardcastle: Engineering
Kem Hargrove: Land

1915 E. 70th. Street
Shreveport, LA 71105
Office (318) 222-7464
Fax (318) 222-7466

Actively seeking Oil & Gas opportunities in the Upper and Lower Gulf Coast Basin. Operated and Non-Operated. Vertical normal pressured development prospects and Acquisitions preferred.

SGS HONORARY MEMBERS

James D. Aimer*
William E. Bancroft*
Michael W. Beckman*
Orville Roger Berg
B. W. Blanpied*
Prentis L. Boatner, Jr.*
Alan L. Brittain
John Franks*
Victor P. Grage*
John C. Grunau*
J. Frank Harrell*
James B. Harris*
William E. Hayes*
Roy T. Hazzard*
Dr. Leo Hermann*

Kevin B. Hill
Charles J. Hoke*
Perry G. Holloway*
Walter E. Hopper*
E. B. Hutson*
L. Lee Kincade*
Joseph O. Laird*
Paul Todd Landes, Jr.*
W. W. Lincoln*
William R. Meaney
Clarence L. Moody*
John T. Palmer*
Thomas H. Philpott*
William M. Plaster*
Gene R. Robinson*

C. Lane Sartor*
Erwin W. Saye*
Fred R. Schroeder*
C. Ray Scurlock
Walter H. Spears*
William C. Spooner*
George D. Thomas*
Arthur H. Trowbridge
Henry J. Tyler*
Claude N. Valerius*
Warren B. Weeks*
Percy J. Wheeler, Jr.
B. Ross White*
R. M. Wilson*

(* Deceased)

In Memoriam:

John Franklin Templin II, Ph.D.

John F. Templin, II, Ph.D. passed from this life on August 19, 2021.

John was a force of nature. He rarely rested, he did everything big, and he loved his family and his friends with every ounce of his spirit. The stories of John's generosity, his practical jokes, and his eccentricities fill volumes in the hearts of those that know and love him.



John was a protector. He had a heart for “underdogs,” and always noticed the needs of people around him and took action to help. His resources, his love, and his time were always free and easily given. He would often ask people, “Do you know what I love about you?” The answer for decades was always “everything.”

John is with Jesus Christ his Lord and Savior in heaven. He loved to be outside, and that is often where he felt the presence of God. He spent his time in retirement tirelessly building a sanctuary on his property in Keithville to share with his family and friends. He knew that his Father in heaven was doing the same for him.

John was born on August 6, 1956 in Camp Lejeune, North Carolina where his father was stationed in the United States Marine Corps. John's family later moved to Shreveport, LA and Carthage, TX where John graduated from Carthage High School. He attended Louisiana Tech University in Ruston, LA and earned an Associate's of Science in Technical Drafting and later a Bachelor's of Science in Geology. After many years working in the Geology industry, he went back to school at Louisiana Baptist University and earned a Ph.D. in Business Development.

GEOGULF2021

A U S T I N

October 27–29, 2021

71st Annual Gulf Coast Geoscience Convention

1 EP Exploration & Production	2 RM Resource Management	3 SE Sustainable Energy	4 Tech Technology	5 PD Panel Discussions
---	--	---	--------------------------------	--



Immerse Yourself
in the Evolution of
Geological Science



Hosted by
Austin Geological Society
Bureau of Economic Geology





LOUISIANA BOARD OF PROFESSIONAL GEOSCIENTISTS

Geoscientist Licensing in Louisiana

Did you know?

When you attend a monthly Shreveport Geological Society meeting, you earn one hour of continuing education credit for your LBOPG license. This is a simple and enjoyable way to get your hours! You can also find links to continuing education ethics credit courses at <https://sgs1.org/continuing-education/>.

Ready to track your CE hours?

Visit the LBOPG website today to download your continuing education log template lbopg.org/resources/continuing-education

1	A	B	C	D	E	F	G	H	I	J	K	L
2	Name:					PG License #:		Renewal Date:				
3	Date	Activity				Sponsor Organization		Credits				
4		Code*	Title	Instructor	Name	Location	Time	CEU	PDH			
5												
6												
7												
8												
9												
10												
11												
12												
13												
14												
15												
16												
17												
18												
19												
20												
21	Total PDH claimed this renewal period:										0	
22	PDH carry over from previous year claimed for this report:											
23	Total PDH claimed to meet minimum requirements:										0	
24	PDH to be carried over to next year's report:											
25	Audits will be conducted randomly and/or as needed to confirm CE activities each year.											
26	It is your responsibility to collect and maintain proof of attendance and completion of CE activities in case an audit is called.											
27	*Code		Conversion of = PDH		Minimum hrs. to renew		Maximum hrs. Allowed/Period					
28	Participant Credit	P	Each Direct Hour =	1	14	Geoscience Credits	Society Meetings					12
29	Instructor Credit	I	CEU, Papers, etc. =	10	1	Ethics Credits	Self directed Coursework					5
30	Authorship Credit	A	College Qtr. Hr. =	10	15	Total	Authorship - Paper					10
31	Meeting Credit	M	Semester Hour =	15			Authorship - Book					45
32	Ethics Credit	E	Instructor =	3XPDH								
33	This form was intended to be a one (1) letter size page, i.e. one (1) years record of CE activity or 15 PDH.											
34	It is recommended that additional data be entered into a second (or third, etc.) worksheet in this spread sheet workbook.											
35	An entire (blank) form can then be copied into the new worksheet and the sheet tab named as the report year.											
36	This workbook has two (2) new sheets included as examples so you can start the process of recording your CE activity.											
37												
38												
39												

Like what you see?

Fill out and mail in this form or find it online at SGS1.org.

You can renew online instead
 of filling out this card!
 ★ www.sgs1.org ★

Active \$25 / yr	
Associate \$25 / yr	
Honorary \$0 / yr	
Student \$5 / yr	
Optional Donation SGS Scholarship Fund	
Optional Donation Faithful Friends	
Total Payment	

NAME (Please Print) _____

Check if new applicant or change of address.

DATE _____

APPLICANT OR MEMBER PLEASE TYPE OR PRINT

LAST NAME	FIRST	INITIAL	NICKNAME			
COMPANY		POSITION OR TITLE				
COMPANY MAILING ADDRESS	CITY	STATE	ZIP	COMPANY PHONE		
HOME ADDRESS	CITY	STATE	ZIP	HOME PHONE		
FAX NUMBER	E-MAIL ADDRESS		CELL PHONE			
SCHOOL	DEGREE	MAJOR	YEAR			
PROFESSIONAL AFFILIATIONS	AAPG <input type="checkbox"/> APGS <input type="checkbox"/>	GSA <input type="checkbox"/> PS <input type="checkbox"/>	SEG <input type="checkbox"/> AGI <input type="checkbox"/>	SEPM <input type="checkbox"/> SIPES <input type="checkbox"/>	AIME <input type="checkbox"/> SPE <input type="checkbox"/>	SPWLA <input type="checkbox"/> OTHER _____

OUTLINE OF EXPERIENCE _____

SPOUSE'S NAME _____

PREFERRED MAILING ADDRESS
 HOME BUSINESS
 EMAIL ME THE NEWSLETTER
(no printed copy will be mailed)

QUALIFICATIONS FROM BY-LAWS

In order to be eligible for active membership, an applicant shall be engaged in the practice or teaching of geology or related sciences.

In order to be an associate member, an applicant shall be interested in geological science but not actively engaged in the practice or teaching of geology or related sciences.

To The EXECUTIVE BOARD:

I hearby apply for ACTIVE ASSOCIATE membership in SHREVEPORT GEOLOGICAL SOCIETY and pledge myself to abide by its Constitution and By-laws.

Date: _____ Signature: _____

SPACE BELOW TO BE USED FOR PROCESSING ONLY

Membership Committee

Received: _____

Approved for: Active
 Associate
 Student

Executive Board

Approved: _____

SECRETARY

Date: _____