

Shreveport Geological Society **NEWSLETTER**

Volume 67, No. 1

September 2022

2022 – 2023 Shreveport Geological Society Board of Directors



Meet the Board p. 2
Marking History p. 11
Outreach Report p. 23



SGS1.ORG

Message from



the President

Bonjour and hello fellow SGS members! I hope you all are excited for another great year of networking, community projects, continued education opportunities, and a lot of fun. If you have any suggestions or ideas for upcoming lunch speakers, please contact the program director, Kurt Ley, to discuss as we only have a few spots left. I am looking forward to the great line-up of speakers Kurt has in store for us. This month we have Mark J. Wojna presenting on Breton Sound which is where I broke out in the patch for Exxon Mobil, back when it was just Mobil.

The market is forecasting 2023 to be a phenomenal year for the Oil & Gas Industry. According to billionaire wildcatter, Austry Stephens, “There’s no better time to be in the oil business!” I know we would all like to see tremendous growth and a record setting year.

The 30th Annual ALTAPL-SGS Golf Tournament will be held at East Ridge C.C. on Friday, September 23rd. There will be an awards dinner that evening. This is always a well-attended event, and I encourage all to support by sponsoring, playing in the tournament, or coming to the evening social. Fees for social/dinner are \$35 per person.

I am looking forward to all of the upcoming lunch meetings and social events, reconnecting with old friends, and meeting new ones. Here’s hoping 2022-2023 is a successful year for all...and as we say down da bayou, Laissez le bon temps rouler!

Michael Danos

Meet The Board



President Michael Danos holds a B.S. in Business Administration and Finance from Northwestern State University. He has worked throughout the oilfield since 1994 gaining a background that includes offshore construction, gas cryogenics, and field geology. Michael co-founded Toledo Mudlogging in 2002 and became President in 2013, a position that he currently holds. In his free time, Michael enjoys hunting & fishing with his kids and friends. He is honored to serve as President of the SGS Board of Directors this year.



First Vice President Kelly Byram is currently a geologist for TYGR Energy. He has spent his career generating prospects in the Ark-La-Tex for various companies including Crystal Oil, Medallion Production Co., KCS Resources and Petrohawk Energy. Kelly is a private pilot who enjoys flying whenever and wherever he can. He is married and has two sons and a daughter.



Second Vice President Kurt Ley began his career as a geologist for Superior Oil in 1981. He later worked for Tenneco, Apache, and Stroud Production before co-founding Kingwood Exploration in 2007. He has served on several industry and local boards and was SGS President in 2008. Kurt and his wife Patti stay busy with their 9 grandchildren, but in their spare time, they enjoy traveling – splitting their trips between mountain hikes and the beach.

Meet The Board

(continued)



Secretary Gary Abrams is approaching 20 years at Stroud Exploration. He graduated with a BS in geology from Vanderbilt University and an MS from the University of Texas at El Paso. Gary is actively working TX, LA, and MS and served previously as VP and President of SGS as well as President of SPDA. He enjoys sports, traveling, as well as time at Lake Bistineau.



Treasurer Will Downs is an established oil and gas industry executive with 41 years of experience in public and private E&P, A&D, and service sectors. He earned a B.S. in Geology from Centenary College of Louisiana.

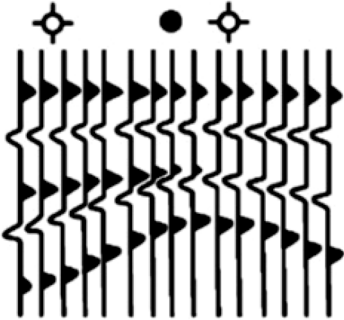


Board Member Bezany Branton has been a geologist at Jones Environmental, Inc. for 18 years. She moved from Venezuela in 1997 to attend Louisiana Tech University. She graduated with a BS in Geology in 2004. In her free time, she enjoys spending time with her adorable kids, Leo and Vanessa, and their new puppy, Rocco.



Board Member Miller Horton is a Geologist with Jones Environmental and looks forward to his first year as an SGS board member. In his free time, Miller enjoys hiking, bicycling, photography and spending time with his family at the lake.

Hill Geophysical Consulting



Kevin B. Hill

*Integrating Geophysical Technology
with Geology*

**What's Under Your
Feet? Find out:
HILLGEO.COM**



415 TEXAS ST., SUITE 200
SHREVEPORT, LA 71101

318.221.3329
kevin@hillgeo.com



Camterra Resources

Main Office

2615 East End Blvd. South
Marshall, Texas 75672
Telephone: (903) 938-9949
Fax: (903) 935-0521

Dallas Office

100 Crescent Court
Suite 1800
Dallas, TX 75201
Telephone: (214) 310-0512

www.camterra.com

Chief Executive Officer: Zach Carlile

President: Paul Marchand

Land Manager/General Counsel: Allen Staggers

Asst. General Counsel: Pam Johnson

Director of Operations and Engineering: Jim Larkin

Sr. Landman: Jason Derebery

Landman/Gas Marketing/Regulatory: Josh Searle

Seeking Opportunities in Texas, Louisiana, Arkansas, Mississippi, and New Mexico

Meet The Board

(continued)



Board Member Bobby Raines has worked as an oil and gas geologist and environmental geologist in the Shreveport area for the past 38 years. Bobby graduated from Northeast Louisiana University (Now ULM) with a BS in Geology in 1982. He most recently worked at Cardinal Gas Storage Partners and ALTEC Environmental Consulting. He is currently self-employed providing oil and gas/environmental consulting services. Bobby enjoys playing golf and traveling with his wife.



Board Member Richard Taylor is serving his second term on the Board of Directors for SGS. He carried the positions of 2nd Vice President and President from 2005-2007. Mr. Taylor has been an independent geologist for most of his career. In his free time, he enjoys listening to local musicians with friends.



Executive Assistant to the Board Annie Green is a Geotech for Nadel and Gussman and looks forward to her sixth year working with Shreveport Geological Society. Additionally, she serves on the boards of the Metropolitan Planning Commission, Christmas festival, and National Night Out in her hometown. In her free time, Annie enjoys outdoor adventures with her husband and three sons.

Join our group on

LinkedIn

Keep in Touch
through the Shreveport Geological
Society LinkedIn Group.



Thomas C. Wyche

CERTIFIED PETROLEUM GEOLOGIST

Horizontal & Vertical Projects
E.Tx., N.La., S.Ark.

333 Texas St., Suite 703
Shreveport, LA 71101
318.465.2944
geo1tcw@gmail.com

AAPG-CPG

Cypress Operating, Inc.



STEVEN A. SINGLETARY
BEN ROBINSON

Petroleum Geologists

Office: (318) 424-2031
Fax: (318) 425-8140

330 Marshall Street, Suite 930
Shreveport, LA 71101



EXPLORATION, L.L.C.

401 Edwards Street, Suite 1200
Shreveport, LA 71101

P.O. Box 1367
Shreveport, LA 71164

office: (318) 222-8406
fax: (318) 222-6061
email: mei@marlinexploration.com

Jon Q=Petersen
President

S. Cody Lenert
Geologist

Autie T. Orjias
V.P./Land Manager

Ryan Q=Petersen
Land

Dean Giles
Secretary/Treasurer



Seismic Exchange, Inc.

Strategic Speculative Surveys
Geophysical Data Marketing & Management

YOUR
Full Service
National
Seismic Data
Marketing Firm

Marketing contact:
Layne Williams
lwilliams@seismicexchange.com

DALLAS DENVER HOUSTON NEW ORLEANS TULSA

201 St Charles Ave., Suite 4300
New Orleans, LA 70170
(D) 504-510-2508 (C) 504-458-3056

www.seismicexchange.com

Faithful Friends 2021 - 2022

Milbird Resources

Grant E. Black

John Atkins

Chris Franks

Robert B. Raines, Jr.

Sartor - Richardson

Mark Moore

Charles Gerard

William Meaney

William D. Hart

Johnnie P. Wanger

Joe R. White, Jr.

Wild Oak Gas Company, Inc.

Roger Berg

Saye Energy, LLC

Stuart Oden

River Rouge Minerals

Kingwood Exploration

William Downs

Scott Comegys

Steve White

Phil Israel

Geological Drafting Consultants, Inc.

Joe McDuff

Sugar Creek Producing Company

Williamson Oil and Gas, Inc.

David Billingsley

Marlin Exploration, LLC

Grigsby Petroleum, Inc.

Louise Pearce

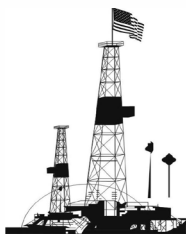
Hill Geophysical Consulting

T.W. McGuire & Associates, Inc.

Toledo Mudlogging Services, Inc.

Thank You!

To be a Faithful Friend for 2022-2023,
please contact Kelly Byram.



PALMER

PETROLEUM, INC.

Exploration and Development

Operations

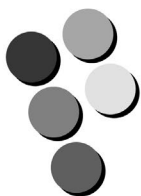
Oil and Gas Investments

425 Ashley Ridge Blvd., Suite 360
Shreveport, Louisiana 71106

Phone: (318) 222-0517

www.palmerpetro.com

Fax: (318) 424-3256



Paragon

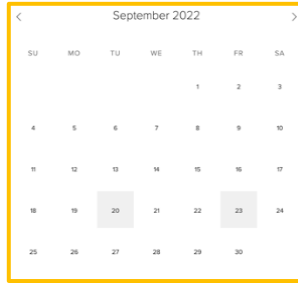
P R E S S

DESIGN PRINT MAIL

318-868-3351

www.ParagonPress.net

Calendar of Events



View
this interactive calendar at SGS1.org

September 16

RSVP for the Meeting

September 20

Monthly Meeting

Mark J. Wojna presents

“Breton Sound – A Conventional Deep Water Play in
Shallow Louisiana State Waters”

In-person 11:30 a.m. - 1 p.m.; Petroleum Club 15th Floor

Virtual 12:00 p.m. - 1 p.m. Zoom

September 23

SGS-ALTAPL Golf Tournament

On the Cover: 2022-2023 Board photographed by
The Harrington House Photographic Studio & Gallery.

Interior Art: Page 1 “Fabulous Finds Series No. 38” (*detail*) by Christine
Bailey, courtesy of the Bailey Art Gallery at 214 Texas Street.

More at Bailey-Gallery.com.

Page 17 “Entrance” (*detail*) by Mary Virginia Hill.

Got news? Geology photos for the cover? Meeting page art?

Email it to the editor today: 1RachelMcNerney@gmail.com



MILESTONE ENERGY, LLC

Oil & Gas Exploration and Development

Joseph A. Lott

Geologist / Managing Partner

Zach Kelly
Geologist

Zach McDonald
Geologist

Thomas A. Giles
Land Manager

333 Texas Street, Suite 516
Shreveport, Louisiana 71101
jlott100@bellsouth.net

Office: 318.212.0470
Fax: 318.212.0469

- Looking for Prospects
- Geophysical Consultant
- Landmark Graphics Corp. Software
- Synthetic Seismograms, modeling and cross sections



- Digitizing capability
- 2-D & 3-D Seismic Acquisition, Processing & Interpretation
- SeisVision 2-D & 3-D interpretation and mapping software

Bobby Ben Taylor - President

O: 120 S Broadway, Suite 102
Tyler, Texas 75702
Mobile: (903) 521-3182

H: 7130 Holly Square Court
Tyler, Texas 75703
Email: taylor@webfoxmail.com

LOOKING FOR PROSPECTS

Let me tailor your geophysical needs.

MUSLOW OIL & GAS, INC.

330 Marshall Street
Suite 628
Shreveport, LA 71101

Eric Weiss
President

(318) 221-8694
Fax: (318) 227-2106

R. LACY / CRAIN ENERGY

*Oil and Gas Investments
Exploration and Development*

222 EAST TYLER STREET
LONGVIEW, TX 75601
903-758-8276 (O)

Chris Bresch
V.P. Exploration
cbresch@rlacy.com

Hunter Brumble
Staff Geoscientist
hbrumble@rlacy.com

Scott Caswell
Sr. Geophysicist/Geoscientist
scaswell@rlacy.com

First Commercial Use of Natural Gas in Louisiana

By David Williamson and Matthew Chumley

Years ago, a historical marker stood in downtown Shreveport just south of where Market Street crosses Twelve Mile Bayou. This historical marker commemorated the first commercial use of natural gas in Louisiana that occurred in 1870. The marker was sponsored by the Shreveport Desk and Derrick Club and erected in 1976 (see newspaper article on page 15).

About 40 years later the marker was run over by a vehicle and left in shambles on the side of the road for several years. Several members of the Shreveport Geological Society contacted the City of Shreveport in an attempt to get the historical marker re-installed. The City finally removed the marker and said they would put it back up. Time past and the SGS members contacted the City about the status of the marker and learned it had been lost.

In 2020, Matthew Chumley (pictured below, left) with the SGS began an initiative to get a new historical marker to replace the one that



was lost. The Louisiana Office of Culture, Recreation and Tourism was contacted for information on the process to obtain a new historical Marker. The SGS completed an application for a new historical marker and began the process of working with the Louisiana Office of Tourism to purchase a new marker. The SGS solicited donations from its members to raise money to pay the \$2,160 cost for a new marker. On February 15, 2022 Mathew Chumley received a letter from Lynne Coxwell, Director of Research with the Louisiana Office of Tourism which advised the application for reorder of the historical marker had been approved. The letter also advised that the Louisiana Department of Transportation and Development would handle installation of the marker.

The marker was received by DOTD and the SGS was notified it had been delivered and was ready to be installed. Matthew Chumley and David Williamson met with representatives of DOTD on July 25, 2022 on the site to confirm where the marker was to be installed. SGS contacted the City to get the site cleaned up for installation of the marker. The City cleaned up the site. DOTD advised on July 27th that the carpenter crew had completed installation of the historical marker.

Once again, the public can be advised that the first commercial use of natural gas in Louisiana was in Shreveport in 1870. Thanks to many exploration geologists natural gas continues to be produced today for use as a clean and efficient viable fuel to meet the needs of our citizens.



Kingwood Exploration, LLC
Oil & Gas Exploration
and Production



Kurt M. Ley

Exploration Manager & Partner

Robert E. Braswell

Engineering/Operations Manager & Partner

416 Travis St., Suite 1100
Shreveport, LA 71101

Phone: 318-946-8585
Fax: 318-946-8287

kurt.ley@kingwoodexploration.com
robert.braswell@kingwoodexploration.com



Established by G.M. Anderson

333 TEXAS ST., SUITE 2020

SHREVEPORT, LA 71101-5357

Phone: (318) 227-2000

Fax: (318) 425-5935



★ Many, LA

★ Midland, TX

The Horizontal Specialists!!

We work with the greatest companies
in the world, please give us a call
to see what we can do for you!!

Joe Eidson 318-623-5435

Michael Danos 318-332-7673

20 Ford Road, Many, LA 71449

Security Exploration, Inc.

8509 Line Avenue
Shreveport, LA 71106



J. Stafford Comegys
President

Donna Walker
Geologist

Barbara Lyles
Office Manager

OIL & GAS EXPLORATION

Tel: (318) 222-1066

Fax: (318) 222-4932

Discovery of natural gas recalled

Natural gas was discovered in Shreveport 106 years ago along the banks of Cross Bayou.

There was no fanfare, no rush for leases. The city's 2,000 pioneer citizens calmly went about their daily routine, little aware of the significance of this event.

Great moments in history often come about as the result of some such seemingly insignificant chance happening. In this case, curiosity, nightfall, a match and natural gas provided the ingredients for one of those unique episodes in history.

In 1870, natural gas was a strange, unexplained phenomenon which was continually causing only headaches for those in the fledgling oil industry. The pages of history were already full of notes and anecdotes about strange gases that burn.

It had been only 11 years since Col. Edwin Drake completed the first well deliberately drilled in search of petroleum. Man was beginning to find practical uses for this product, but it was becoming painfully evident that natural gas and crude oil were somehow closely linked. Thus, it became obvious that some solution was needed for the strange, highly flammable gas frequently found with oil.

It was at this point that the historic local vignette was beginning to unfold. Here is how it has been told through the years:

The Shreveport Ice Manufacturing Co. was a prospering concern in 1870, so much so that an improvement in the source of its raw material, water, was necessary. The company decided to drill a deep water well near the plant to meet this need. The well was started on the south bank of Cross Bayou about 100 yards west of where Market Street now crosses the waterway. With the latest tools and techniques of the day, the well was drilled to a depth of 961 feet. With approaching darkness, workmen called a halt to operations and retired for the night.

The ice plant night watchman began making his rounds soon after. He could vaguely make out the large pipe protruding from the ground which kept the sides of the well from caving in. Being naturally curious, he wanted to get a closer look at the drilling equipment.

He took a match from his pocket, noticing a strange "wind" coming up from the newly drilled hole. He struck the match on the pipe, and as he raised it overhead to better spread the light, his hand moved the match over the open pipe. The area instantly exploded into a searing light as the "wind" in the pipe was ignited.

The watchman fled in terror. The next morning there was some talk around town about the fire at the ice plant the previous night. But, there being no apparent damage, the event was quickly forgotten by all except a few people around the plant.

History fails to record who had the



Gas well marker

Members of the Shreveport Desk and Derrick Club pose with the historical marker that will be placed Wednesday at 90 Market St. marking the site of the first commercial gas well in the State of Louisiana. Participants are: (left to right) Laverne Broussard, chairman of the public relations committee of Desk and Derrick Club; Jack Somner, chairman of the board of W. L. Somner Co., who provided the sign; Joan Bankston and Mary Ashcraft, both club members active in the project.

ingenuity to capture the "wind" from the well and put it to use. As a result of this resourcefulness, the ice plant thus became, as far as is known, the first building to use natural gas in the State of Louisiana when it was piped into the building for illumination.

Next Wednesday, members of the Shreveport Desk and Derrick Club, public officials and officials of Shreveport's gas and oil industry will gather near the site of this well to erect a permanent marker designating the site as an official state historical landmark.

The project of locating and authenticating the site of this first well was undertaken by members of the Shreveport Desk and Derrick Club in commemoration of the Bicentennial year and the 75th anniversary of the oil and gas industry in Louisiana. Months of research and diligent effort went into the verification of the data, and involved individuals from all over the state.

The women were aided in their efforts by grants from W. L. Somner Co., Inc., and Arkansas Louisiana Gas Co.

The inscription on the marker reads: "In 1870 natural gas and water gushed from a 961 ft. water well drilled near this spot by the American Well Works for the Shreveport Ice Manufacturing Co. The gas was used to light the plant and is the first documented commercial use of natural gas in Louisiana."

"Gas" was not an unfamiliar term to Louisianians and Shreveporters when this first natural gas was discovered in the area. Since 1859, Shreveport homes and businesses had been heated by "manufactured" gas — a product made from coal, coke or oil, or by harnessing residue gas produced by burning pine knots. It was crude, but its use provided technology necessary to begin commercial use of natural gas. The use of manufactured gas, and then natural gas for commercial and residential purposes was the beginning of a new era for Shreveport.

By 1906, one year after the first producing oil well was drilled in Caddo Parish, natural gas was being distributed through a citywide pipeline system, thus making Shreveport one of the first cities in the South to have natural gas service.

Shreveport, sitting in the center of a great many rich oil and gas fields, became the hub of the energy industry. Transmission and distribution offices were headquartered here, and expansion and growth of the gas industry continued at the same rapid rate as the city itself.

From a beginning so unpretentious, arousing great surprise from the ice company watchman but so little interest from the public, Shreveport has grown from the first city in Louisiana to use natural gas, to a leader in the oil and gas industry.

THE PETROLEUM CLUB OF SHREVEPORT

Serving delectable cuisine to the
Shreveport Geological Society
regular luncheon meetings.

318-425-4251



**David Meadows
Manager**

Mid South Tower Bldg.
416 Travis Street, Suite 1414
Shreveport, LA 71101

Phone: 318-425-7617
Fax: 318-425-1385
Email: jmexploration@comcast.net

BRAMMER ENGINEERING, INC.

Services:

- Drilling
- Completion
- Construction
- Production
- HSE
- Regulatory
- Land
- Accounting
- Risk Management
- Information Systems



www.brammer.com
318.429.2345 o • 318.429.2340 f

401 Edwards Street, Suite 1510, Shreveport, LA 71101

WLS CORPORATION

**OIL & GAS
EXPLORATION & PRODUCTION**

**Wayne L. Simpson
President**

**Philip Davis
Geologist**

416 Travis Street, Suite 1006
Shreveport, Louisiana 71101

Office: (318) 425-2978
Fax: (318) 425-3166

The September Meeting

Make your
RESERVATION

Mark J. Wojna

presents

“Breton Sound – A Conventional Deep Water Play in
Shallow Louisiana State Waters”

Tuesday, September 20

Virtual

12:00 p.m. Zoom

\$10

In-Person

11:30 a.m. Petroleum Club of Shreveport

\$25 (Children 10 and under \$8)

We encourage members to invite guests, spouses, and
friends to any of our meetings.

If you'd like a seat, kindly **RSVP**
by **Friday, September 16** at SGS1.org
or by calling Kurt Ley at 318-946-8585

BARROW-SHAVER RESOURCES COMPANY

Oil & Gas Exploration & Development

Scott Owen Shaver

Managing Partner and Exploration Manager

903-593-5221 Office

903-593-1692 Fax

903-561-4711 Home

903-582-4711 Farm

903-245-4999 Mobile

977 Pruitt Place

Tyler, Texas 75703

sos-bsr@tyler.net



Drilling Contractor
Oil & Gas Operator
Turnkey Services
Well Service & Workover
Working Interest Participant

318-992-4111

P. O. Box 2990, Jena, LA 71342

justissoil.com

CAPLIS FORESTRY, LLC

JEFFREY W. CAPLIS

-CONSULTING FORESTER-

-complete forestry services-

- Timber Appraisals • Timber Management • Timber Cruising •
- Damage Appraisals • Tree Planting •

CELL: 318-617-9016

OFFICE: 318-752-3662

586 CAPLIS SLIGO RD.

BOSSIER CITY, LA 71112

B.S. LOUISIANA TECH: SCHOOL OF FORESTRY

STROUD PRODUCTION, LLC

333 Texas Street, Suite 860

Shreveport, Louisiana 71101-5302

Voice: (318) 429-2260

Fax: (318) 429 2255

Email: ras@spllc.com

Mike Rogers Drilling Co., Inc.

Drilling & Interest Participation

MIKE ROGERS, PRESIDENT
CRAIG ROGERS, VICE PRESIDENT

Office: 870-234-2356 • Fax: 870-234-7487

1708 N. Vine Street • P. O. Box 126 • Magnolia, AR 71754
email: mrdc1981@gmail.com

Advertise Here!

Contact Kurt Ley at 946-8585

Biography

Mark J. Wojna joined LLOX Onshore Exploration as a Senior Explorationist in December 2019. Mark was previously Vice President of Exploration for Upstream Exploration from the company's inception in February 2016 through its sale in October 2019. Prior to Upstream, Mark served as Gulf Coast Exploration Manager for Century Exploration New Orleans from 2008 to 2015. Mark's 29 year career with Century was focused on oil and gas



exploration and development in the federal OCS and state waters of Louisiana and onshore South Louisiana. Mark was instrumental in developing and growing the geopressured Middle Miocene trend in Breton Sound for Century Exploration and Upstream Exploration. Mark had a technical paper published on Century's discovery and development of Breton Sound 53 Field in the New Orleans Geological Society's 2010 South Louisiana Oil & Gas Fields Guidebook. Mark is a native of Detroit, Michigan. He has a Bachelor of Science degree in Geology from Michigan State University and a Master of Science degree in Geology from the University of Southern Mississippi.

Abstract

The geopressured Middle Miocene section remains an attractive conventional exploration and development play in South Louisiana. This presentation summarizes recent exploration efforts in the Breton Sound geopressured section. The geopressured Middle Miocene section in Breton Sound produces at high flow rates, is liquid rich and generates strong cash flow. A deep-water depositional model was utilized to develop new exploration opportunities in the geopressured section. Seismic AVO analysis was used to high-grade prospects. All these factors combined create an attractive opportunity for future exploration growth throughout South Louisiana in the geopressured section.



Shreveport Petroleum Data Assn., Inc.

333 Texas Street, Suite 900

Shreveport, LA 71101

(318) 429-2237

Fax (318) 429-2441

Website : www.spdalogs.org

spda@spdalogs.org

Cindy Shepherd

Manager



Bobby E. Jelks
President

Faith N. Gilbert
CFO

Edward Yarborough
Exploration Manager

James Light
Land Manager

P.O. Box 7726
Shreveport, LA 71137-7726
Phone: (318) 221-2688
Fax: (318) 459-2935



Kalmbach
Production Company, LLC

Sam Kalmbach
Geologist

400 Travis Street, Ste. 516 office: (318) 424-6566
Shreveport, LA 71101 cell (318) 470-9977
e-mail: sam.geo.kpc@gmail.com



L. CHRIS JOHNSON
Manager

2650 Fairfield Ave
Shreveport, LA 71104
BUS:(318) 222-6652
FAX: (318) 222-6673
cjohnson@jerlic.com

GRIGSBY PETROLEUM, INC.

**Oil & Gas Exploration
and Production**

**333 Texas St., Suite 2285
Shreveport, LA 71101
Phone (318) 425-5306
Fax (318) 425-3733**

David L. Billingsley, Jr.
Certified Petroleum Geologist

400 Travis Street, Suite 1230
Shreveport, LA 71101 Cell Phone
DLBJR1@aol.com (318) 426-4320

MILBIRD RESOURCES, LLC
Oil & Gas Exploration

Maurice N. Birdwell
Managing Partner

**AAPG Certified Petroleum Geologist
Reg. Prof. Geol. Ark. La. Miss. Tex**

2043 Oak Ridge Drive 601.936.6939
Pearl, MS 39208 mnbirdwell@comcast.net

Photos from the May Meeting

Photos by Brenda Pender

Scott Comegys presented “Automated well log digitizing using machine learning.” Members and guests enjoyed the final lunch meeting of the year. The video for Scott Comegys’ talk has been posted on the SGS website. See page 21 for details.





JON E. SAYE

PETROLEUM GEOLOGIST

Office: 318-221-4504
 Fax: 318-221-4516
 Cell: 318-458-1515

1015 Mid South Twr. • P. O. Box 137
 Shreveport, LA 71161
jsaye@prodigy.net

COUTRET & ASSOC., INC.

Petroleum Reservoir Engineers
 Property Evaluation, Reservoir Engineering
 Fluid Injection, Property Management

Louisiana Tower
401 Edwards Street
Shreveport, LA 71101

Telephone: (318) 221-0482
Fax: (318) 221-3202
E-mail: rmegowen@coutret.com

ODEN & ASSOCIATES, LLC
Oil and Gas Exploration
 Phone: 318-222-2400
 Fax: 318-226-0840



ALAN SCHLICHTEMIER

Geologist

P.O. Box 1806
 Shreveport, LA 71166

416 Travis Street, Ste. 400
 Shreveport, LA 71101
 odenassoc@bellsouth.net



Delta-T Geophysical Consulting, Inc.

Comprehensive Geophysical Services

- Kingdom Suite 2d/3d pak
- Geographix
- GMA
- Neuralog
- Mesa 3-D Design
- Digirule

Woodie Huffman, CEO

401 Edwards Street, Suite 826
 Shreveport, LA 71101-5510

Phone: (318) 221-0414

Fax: (318) 425-0688

Email: delta@bellsouth.net

Williamson

OIL & GAS, INC.

Oil & Gas Development



Office: (318) 221-2923 400 Travis Street
 Fax: (318) 221-3488 Suite 1410
 Email: bob@williamsonogi.com Shreveport, LA 71101

Joe R. White, Jr.

Petroleum Geologist

8505 Dogwood Trail
 Houghton, LA 71037
 Cell. 318-423-9828
 Hm. 318-949-3539
 Available for Consulting

AAPG CPG #5580
MS RPG #0097
LA CPG #345
Jwhite1362@aol.com
Joerjrw@gmail.com

Cowgill & Associates, L.L.C.

Oil & Gas Exploration & Production

Stephen C. Cowgill

Geologist/Managing Partner

P. O. Box 72180 Office: 318.429.2170
 Bossier City, LA 71172-2180 Fax: 318.429.1170
 cowgill@suddenlink.net Cell: 318.455.9516

CSC ENERGY CORP.

OIL & GAS EXPLORATION

Joel B. Chevalier
 PRESIDENT

416 Travis Street
 Suite 507
 Shreveport, LA 71101

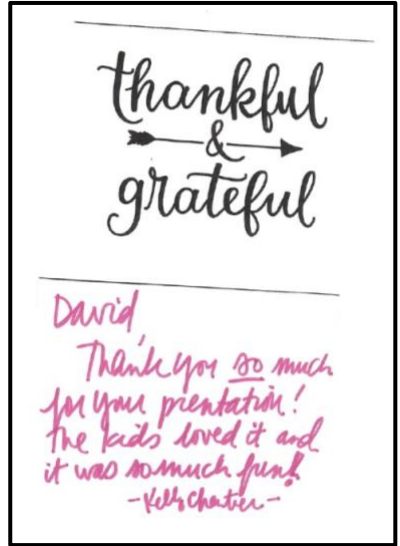
Mobile: (318) 469-5625
 cscenergy@bellsouth.net

Outreach Report

by David Williamson, edited by Rachel McNerney

Recently, David Williamson made a presentation, on behalf of the Shreveport Geological Society, to about 40 students ages 4 through 12, who attend the “Classical Conversations” homeschool at Gateway Church on Youree Drive. This came about after Kelly Chartier, the director of the homeschool group, submitted a contact form on the website asking for a SGS volunteer to make the presentation.

The students had been studying rocks and minerals and were knowledgeable, attentive and polite. They knew a lot about geology for their age!



Some SGS members have said they would give a presentation but they don't know what to do. David says it depends on the style that's comfortable to the presenter and appropriate for the audience, and offers further pointers and encouragement:

I have been giving talks on geology, rocks/minerals and fossils since I graduated from college in 1972. I used to give a lot of talks to environmental groups like the Sierra Club – not the friendliest audience –



Rotary Clubs, professional organizations (engineers, geologists,

BER-EX-CO., INC.

Orville Roger Berg, Ph.D.

Exploration, Exploitation
Seismic Evaluation
Domestic, International

400 Travis St., Suite 1612
Shreveport, LA 71101-3108
(318) 220-0300
orberg@bellsouth.net

9949 Beaver Creek Drive
Shreveport, LA 71106
(318) 798-1748

Reynolds Drilling Company, Inc.

7591 Fern Ave., Suite 2001
Shreveport, Louisiana 71105-5502

Phone: (318) 227-0118

Fax: (318) 227-0171

reydrill@bellsouth.net

Terry Pat Reynolds
President

GERARD ASSOCIATES, L.C.

OIL & GAS EXPLORATION
DEVELOPMENT AND ACQUISITIONS

J. A. Wojtkiewicz • Charles Gerard

625 Market St., Suite 250
Shreveport, LA 71101
Tel. (318) 221-0761 • FAX (318) 221-8835



SPANOIL INCORPORATED

416 TRAVIS ST., SUITE 806
SHREVEPORT, LA 71101
VOICE: (318) 221-2371
FAX: (318) 221-2372
anthony@spanoil.com

ANTHONY J. SPANO
PRESIDENT



DONNER P R O P E R T I E S

LOGAN J. HUNT, CPL
Argent Mineral Management, LLC, Manager

318.251.5830
lhunt@argentmineral.com

surveyors, realtors and others) on geology and mining. I have also done debates on public television about the pros and cons of strip mining. This debate had the second largest viewing audience – the audience for the debate on gun control was larger.

I have given talks on geology and rocks and minerals to school groups and scouts since my daughter was in elementary school. She is a junior at Ole Miss now, so it's been a few years.



Some of her friends still call me the “Rock Guy”. The presentation is directed at the age of the group and the education they are getting. I have talked to some kindergarten and elementary age kids who knew more about geology than middle or high school age students. I have found the younger kids are more willing to talk, ask questions and participate.

I always ask up front if anyone knows a geologist and we talk about the work that geologists do to explore for various commodities – oil/gas, coal, minerals, etc. We talk about the word “geology” and its origin from the Greek – geos (earth) and logy (study of). Someone usually asks what I do as a geologist or what I like best about the work I do.

I make the presentations by explaining there are there types of rocks – sedimentary, metamorphic and igneous – and show many examples of each. The approach is to not just show and name the rocks and minerals but talk about how a geologist works in the field to find them, identify them and what they are used for. I use various granites of different types and colors, volcanics (scoria, pumice), slates, schists, mica, sandstone, claystone, salt, sulphur, coal, ironstone, etc. – I have a large rock collection to choose from. As I show and talk about each rock

we talk about their basic properties – color , heft, texture, hardness, crystal faces (if any), smell, taste, etc.

I show fossils and several plastic dinosaurs and we have the obligatory discussion about dinosaurs – most of the younger kids can name more dinosaurs than you or I. I show a piece of amber and we talk about the movie Jurassic Park – they all know about this movie – and where those dinosaurs came from. They all can tell you the story about finding dinosaur DNA in the insect that was trapped in the amber.

I always ask for volunteers to help as we go through the presentation and it works well. They lick the salt, rub the chunk of sulphur and smell it and then we all laugh as they tell their classmates what it tasted like or smelled like. We use graphite and a streak plate to talk about using streaks and color to help identify rocks. They use graphite to make a mark on paper and are surprised to learn they can write with a rock.



As we go along, we talk about what the rocks and minerals are used for and if anyone uses anything made from rocks and minerals. Usually this gets a blank stare. So I ask questions – How did you get to school? If you came in a car what was it made of? This leads into a discussion of what things are made of that we use every day – iron and steel to make the car, gasoline to fuel it, sulphur used in making tires, graphite in the pencils they write with, natural gas and coal used to produce electricity, etc. I show rock cores and drill bits and we talk about drilling and mining to produce various minerals for our use.

It's a fun, learning experience that takes about 30 to 45 minutes depending on the degree of interest and questions. I encourage any of those in SGS that are willing to make a presentation to a group of students to do so. You will learn there is hope for Geology in the future.

Meeting Videos Online Now

Visit <https://sgs1.org/continuing-education> to find recordings from this year's meetings available for \$10 each. Contact ShreveportGeological@gmail.com if you have any issues.



[WELCOME](#) / [ABOUT US](#) / [EVENTS](#) / [EDUCATION](#) / [MEMBERSHIP](#)

[SCHOLARSHIPS](#)
[MAPS IN SCHOOLS](#)
[THE MOCK DIG](#)
[LECTURES](#)
[CONTINUING EDUCATION](#)

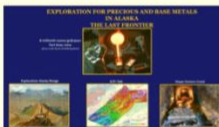
Continuing Education

Shreveport Geological Society members can earn continuing education credit by participating in short courses offered by the SGS on an annual basis, and by taking advantage of the opportunities for continuing education provided below. Fifteen (15) hours of continuing education are required for the annual renewal of a P.G. license, with one of those hours in the area of Professional Ethics. Visit the Louisiana Board of Professional Geoscientists [website](#) for more information. If you have suggestions for continuing education opportunities, please submit them [here](#).

Upcoming Opportunities

Check back soon for more.

SGS Meeting Videos



Exploration for Precious and Base Metals in Alaska - The Last Frontier

\$10.00

Presented by George W. Roth on September 21, 2021



Coring and New Technology

\$10.00

Presented by Blake Mock on October 19, 2021



Making the most out of your geochemical data

\$10.00

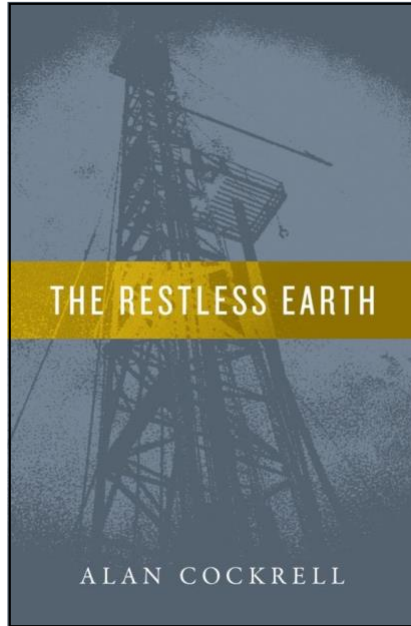
Presented by Craig D. Barrie on November 16, 2021

Invest in the Future

You can **donate** to the SGS Scholarship Fund online at SGS1.org or by writing a check to the SGS with "Scholarship" in the memo line, and you may include an "in memory of" or "in honor of" note as well.

Mail to: Shreveport Geological Society,
P.O. Box 750, Shreveport, LA 71162.

Finally, a novel for, and about, oil hunters.
Enjoy a journey back into the way it was.



Inspired by actual events in the 1950s rural South

The moneymen turned him away, laughing, sneering, saying his science was bad; saying he was too far away from oil, calling him a fool, a dupe, a hopeless loser. His peers, smelling the stench of failure, distanced themselves from him. His lenders—the few he had—fidgeted, fearing he was unlucky.

His bills and worries mounted. His drilling rig, “Lucky Lucy,” true to the antithesis of her name, broke down almost daily. His crews, tired of working for nothing, threatened to walk away.

Crafty, whispering voices, from figures watching from the shadows, schemed to get that which he sought, if he were lucky enough to find it. Eager, desperate faces of farmers, merchants and townspeople stood aside watching, waiting, praying his luck would be theirs, as well.

Few believed him, and as his bit twisted its way into the Earth’s mysterious belly, one who did, a woman he wondered if he could trust, told him what he couldn’t seem to fathom—that his real discovery would not likely be at the bottom of his hole.

The Restless Earth is published by [WordCrafts Press](#) and can be ordered in paperback, hard cover or e-book from [Amazon](#), [Barnes&Noble](#) and other worldwide outlets.

CALL FOR PAPERS

THEMES/SESSIONS



Be There!

APRIL 23-25, 2023
NORRIS CONFERENCE CENTER

**SUBMIT A TALK OR POSTER ABSTRACT
DEADLINE: DECEMBER 15, 2022**

www.geogulf2023.org

**72nd Annual Meeting
of the Gulf Coast Association
of Geological Societies
(GCAGS)**



Gulf of Mexico Power Plays

Eagle Ford, Haynesville, Austin Chalk, Smackover Research and Field Studies

GOM Shelf and Deepwater

Wilcox, Miocene, Plio-Pleistocene, Norphlet

Optimizing Reservoir Assets

Unconventional Play Landing Zones, Source Rocks

Mexico and Caribbean Plays

Central America's Fields and New Plays

Transformative Technologies

Data Analytics, Computer Technology, Seismic Interpretation, CCUS, Geothermal

Business, Profits, Strategies

Geo-startups, Ideas, Disruptors

HGS History- 100 Years

in the Gulf



linda.sternbach@gmail.com
www.geogulf2023.org



Monthly Permits – July 2022

Provided by ABCD GIS Mapping

Louisiana Permits

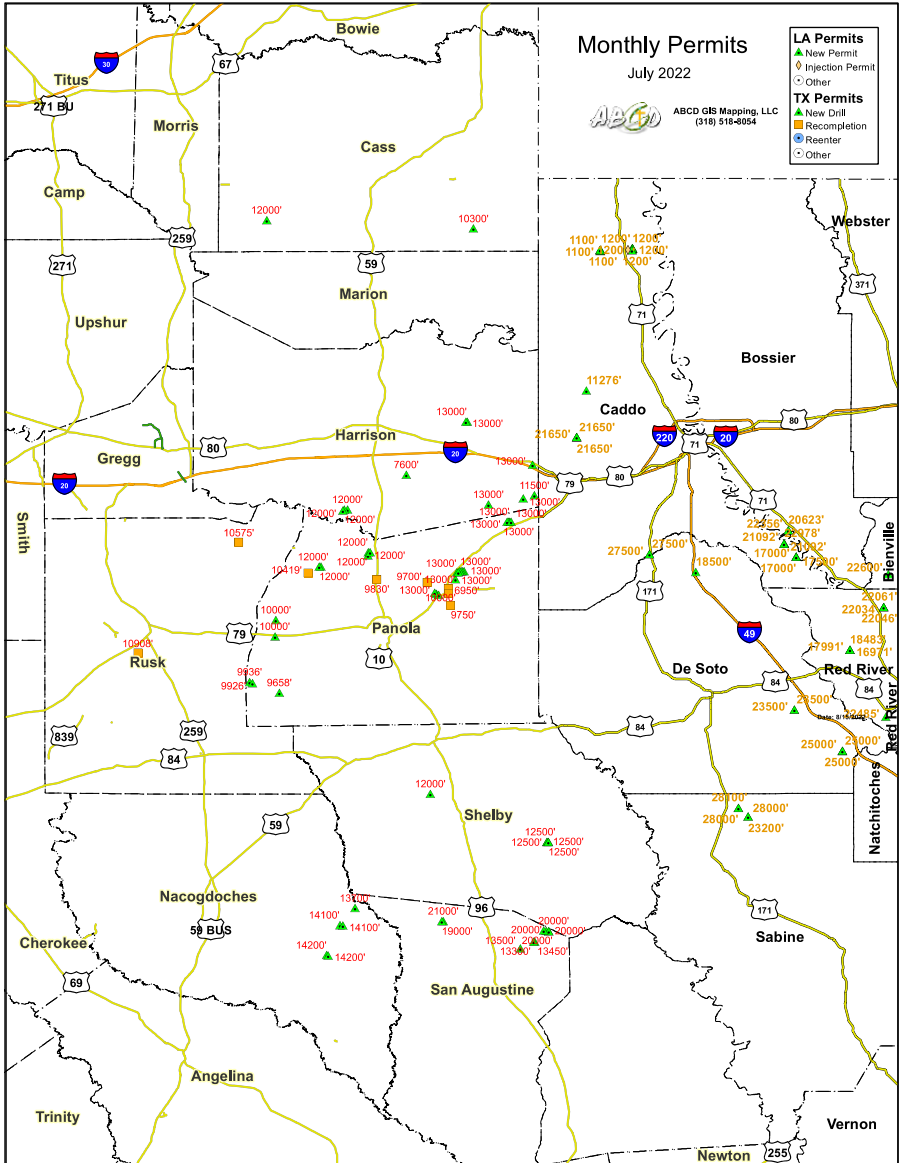
Permit Date	County	Well SN	Operator	Well Name	Depth
7/1/22	BIENVILLE	253587	AETHON ENERGY OPERATING LLC	HA RA SU82;5 CEM 22-15 HC	22600
7/1/22	CADDO	253575	KELLY BAYOU PRODUCTION	MIDYETT	1200
7/1/22	CADDO	253576	KELLY BAYOU PRODUCTION	MIDYETT	1200
7/1/22	CADDO	253577	KELLY BAYOU PRODUCTION	MIDYETT	1200
7/1/22	CADDO	253578	KELLY BAYOU PRODUCTION	MIDYETT	1200
7/1/22	CADDO	253579	KELLY BAYOU PRODUCTION	MIDYETT	1200
7/1/22	CADDO	253580	KELLY BAYOU PRODUCTION	MIDYETT	1200
7/1/22	CADDO	253581	KELLY BAYOU PRODUCTION	HOSS FEE	1200
7/1/22	CADDO	253582	KELLY BAYOU PRODUCTION	HOSS FEE	1200
7/5/22	CADDO	253585	AETHON ENERGY OPERATING LLC	HA RA SU87;CUPPLES 12 H	17000
7/5/22	CADDO	253586	AETHON ENERGY OPERATING LLC	HA RA SU87;CUPPLES 12 H	17000
7/6/22	CADDO	253588	TRINITY OPERATING (USG), LLC	GRAY	11276
7/11/22	CADDO	253591	BPX (WSF OPERATING) INC	HA RA SUGG;M&M 1-26 HC	22978
7/11/22	CADDO	253592	BPX (WSF OPERATING) INC	HA RA SUGG;M&M 1-26 HC	21092
7/11/22	CADDO	253593	BPX (WSF OPERATING) INC	HA RA SUGG;M&M 39-26 HC	21092
7/13/22	CADDO	253594	EGH OPERATING, LLC	ANKERSON	1100
7/13/22	CADDO	253595	EGH OPERATING, LLC	ANKERSON	1100
7/13/22	CADDO	253596	EGH OPERATING, LLC	ANKERSON	1100
7/13/22	CADDO	253597	EGH OPERATING, LLC	ANKERSON	1100
7/13/22	CADDO	253598	EGH OPERATING, LLC	ANKERSON	1100
7/13/22	CADDO	253599	EGH OPERATING, LLC	ANKERSON	1100
7/13/22	CADDO	253615	AETHON ENERGY OPERATING LLC	HA RA SU87;CUPPLES 12 H	17500
7/14/22	CADDO	975899	BAYOU STATE OIL CORPORATION	HOSS SWD	0
7/15/22	RED RIVER	253618	SWN PRODUCTION (LOUISIANA), LLC	HA RA SU1;LAWSON 15&22-14-10HC	22061
7/15/22	RED RIVER	253619	SWN PRODUCTION (LOUISIANA), LLC	HA RA SU1;LAWSON 15&22-14-10HC	22046
7/15/22	RED RIVER	253620	SWN PRODUCTION (LOUISIANA), LLC	HA RA SU1;LAWSON 15&22-14-10HC	22034
7/15/22	SABINE	253616	GEP HAYNESVILLE II, LLC	SP CATTLE 36-1-12 HC	28000
7/15/22	SABINE	253617	GEP HAYNESVILLE II, LLC	SP CATTLE 25-24-13 HC	28100
7/18/22	BOSSIER	253624	BPX (WSF OPERATING) INC	HA RA SU142;MRH 26-1 HC	20623
7/18/22	BOSSIER	253625	BPX (WSF OPERATING) INC	HA RA SU142;MRH 26-23-14 HC	22356
7/18/22	CADDO	253627	CHESAPEAKE OPERATING, L.L.C.	HA RA SU150;ROB&&17&20-15-14HC	27500
7/18/22	CADDO	253628	CHESAPEAKE OPERATING, L.L.C.	HA RA SU150;ROB 8&17-15-14 HC	27500
7/18/22	DE SOTO	253621	SWN PRODUCTION (LOUISIANA), LLC	HA RA SUL;FELIX 23&14-11-11 HC	25000
7/18/22	DE SOTO	253622	SWN PRODUCTION (LOUISIANA), LLC	HA RA SUL;FELIX 23&14-11-11 HC	25000
7/18/22	DE SOTO	253623	SWN PRODUCTION (LOUISIANA), LLC	HA RA SUL;FELIX 23&14-11-11 HC	25000
7/20/22	CADDO	253631	TRINITY OPERATING (USG), LLC	HA RA SU132;SL HEROLD 23-14 H	21650
7/20/22	CADDO	253632	TRINITY OPERATING (USG), LLC	HA RA SU132;SL HEROLD 23-14 H	21650
7/20/22	CADDO	253633	TRINITY OPERATING (USG), LLC	HA RA SU132;SL HEROLD 23-14 H	21650
7/20/22	SABINE	253629	GEP HAYNESVILLE II, LLC	FRANK FOX 6-7-18 HC	28000
7/20/22	SABINE	253630	GEP HAYNESVILLE II, LLC	FRANK FOX 31-30 HC	23200
7/21/22	DE SOTO	253634	CHESAPEAKE OPERATING, L.L.C.	HA RA SURR;NP 25&36-12-12 HC	23500
7/21/22	DE SOTO	253635	CHESAPEAKE OPERATING, L.L.C.	HA RA SURR;NP 25&36-12-12 HC	23500
7/25/22	DE SOTO	253639	EXCO OPERATING COMPANY, LP	HA RA SU162;DAVIS 19-18 HC	18500
7/26/22	RED RIVER	253640	BPX OPERATING COMPANY	HA RB SU92;NAC ROYALTY 34 H	22485
7/26/22	RED RIVER	253641	ENSIGHT IV ENERGY MANAGEMENT, LLC	HA RB SU78;KERVIN ETAL 13 H	18483
7/26/22	RED RIVER	253642	ENSIGHT IV ENERGY MANAGEMENT, LLC	HA RB SU78;KERVIN ETAL 13 H	17991
7/26/22	RED RIVER	253643	ENSIGHT IV ENERGY MANAGEMENT, LLC	HA RB SU78;KERVIN ETAL 13 H	16971

See Map and Texas Permits on following pages.

Monthly Permits – July 2022

Provided by ABCD GIS Mapping

Map



See Permits listed on previous and following pages.

Monthly Permits – July 2022

Provided by ABCD GIS Mapping

Texas Permits

AppDate	County	API	Operator	Purpose	TD
7/1/22	PANOLA SAN	36532461	SHERIDAN PRODUCTION CO III, LLC	Recompletion	9700
7/1/22	AUGUSTINE	40530448	XTO ENERGY INC.	New Drill	21000
7/7/22	PANOLA	36531044	GLASSELL PRODUCING COMPANY, INC.	Recompletion	9750
7/7/22	SHELBY	41931849	XTO ENERGY INC.	New Drill	20000
7/7/22	SHELBY	41931851	XTO ENERGY INC.	New Drill	20000
7/7/22	SHELBY	41931852	XTO ENERGY INC.	New Drill	20000
7/7/22	HARRISON SAN	20335531	ROCKCLIFF ENERGY OPERATING LLC	New Drill	13000
7/8/22	AUGUSTINE	40530781	PINE WAVE ENERGY PARTNERS OP,LLC	New Drill	13450
7/8/22	PANOLA	36533689	GLASSELL PRODUCING COMPANY, INC.	Recompletion	10000
7/8/22	PANOLA	36538772	TANOS EXPLORATION II, LLC	New Drill	9658
7/8/22	HARRISON	20335532	ROCKCLIFF ENERGY OPERATING LLC	New Drill	13000
7/8/22	HARRISON	20335533	ROCKCLIFF ENERGY OPERATING LLC	New Drill	13000
7/8/22	PANOLA	36538771	ROCKCLIFF ENERGY OPERATING LLC	New Drill	13000
7/8/22	PANOLA SAN	36532193	R. LACY SERVICES, LTD.	Recompletion	9830
7/11/22	AUGUSTINE	40530774	PINE WAVE ENERGY PARTNERS OP,LLC	New Drill	13300
7/12/22	HARRISON	20335528	COMSTOCK OIL & GAS, LLC	New Drill	13000
7/12/22	SHELBY	41931850	XTO ENERGY INC.	New Drill	20000
7/12/22	PANOLA	36538770	ROCKCLIFF ENERGY OPERATING LLC	New Drill	13000
7/12/22	SHELBY	41931853	EAGLE OIL & GAS CO.	New Drill	12000
7/13/22	NACOGDOCHES	34733447	AETHON ENERGY OPERATING LLC	New Drill	14100
7/13/22	NACOGDOCHES	34733445	AETHON ENERGY OPERATING LLC	New Drill	14100
7/14/22	PANOLA	36538748	ROCKCLIFF ENERGY OPERATING LLC	New Drill	13000
7/14/22	PANOLA	36538749	ROCKCLIFF ENERGY OPERATING LLC	New Drill	13000
7/14/22	PANOLA	36538750	ROCKCLIFF ENERGY OPERATING LLC	New Drill	13000
7/14/22	PANOLA	36538751	ROCKCLIFF ENERGY OPERATING LLC	New Drill	13000
7/15/22	SHELBY	41931844	LEGACY RESERVES OPERATING LP	New Drill	12500
7/15/22	SHELBY	41931845	LEGACY RESERVES OPERATING LP	New Drill	12500
7/15/22	NACOGDOCHES	34733454	AETHON ENERGY OPERATING LLC	New Drill	13700
7/15/22	NACOGDOCHES	34733455	AETHON ENERGY OPERATING LLC	New Drill	14200
7/15/22	NACOGDOCHES	34733456	AETHON ENERGY OPERATING LLC	New Drill	14200
7/15/22	HARRISON	20335534	ROCKCLIFF ENERGY OPERATING LLC	New Drill	13000
7/15/22	HARRISON	20335535	ROCKCLIFF ENERGY OPERATING LLC	New Drill	13000
7/15/22	PANOLA	36538756	BLUE DOME OPERATING, LLC	New Drill	11500
7/18/22	PANOLA	36538699	ROCKCLIFF ENERGY OPERATING LLC	New Drill	13000
7/18/22	PANOLA	36538764	SPONTE OPERATING, INC.	New Drill	12000
7/18/22	PANOLA	36538765	SPONTE OPERATING, INC.	New Drill	12000
7/18/22	HARRISON	20335530	ROCKCLIFF ENERGY OPERATING LLC	New Drill	13000
7/18/22	PANOLA	36535907	SPONTE OPERATING, INC.	Recompletion	10419
7/18/22	RUSK	40134450	SABINE OIL & GAS CORPORATION	Recompletion	10908
7/19/22	HARRISON	20335536	SABINE OIL & GAS CORPORATION	New Drill	7600
7/20/22	AUGUSTINE	40530765	PINE WAVE ENERGY PARTNERS OP,LLC	New Drill	13500
7/20/22	PANOLA	36538774	COMSTOCK OIL & GAS, LLC	New Drill	13000
7/20/22	PANOLA	36538775	COMSTOCK OIL & GAS, LLC	New Drill	13000
7/20/22	PANOLA	36538773	COMSTOCK OIL & GAS, LLC	New Drill	13000
7/20/22	HARRISON SAN	20335458	ROCKCLIFF ENERGY OPERATING LLC	New Drill	13000
7/21/22	AUGUSTINE	40530756	XTO ENERGY INC.	New Drill	19000
7/21/22	PANOLA	36538769	ROCKCLIFF ENERGY OPERATING LLC	New Drill	13000
7/21/22	PANOLA	36538776	SLANT OPERATING, LLC	New Drill	10000
7/21/22	PANOLA	36538777	SLANT OPERATING, LLC	New Drill	10000

Continued on next page.

See Map and Louisiana Permits on previous pages.

Monthly Permits – July 2022

Provided by ABCD GIS Mapping

Texas Permits (continued)

7/22/22	SHELBY	41931846	LEGACY RESERVES OPERATING LP	New Drill	12500
7/22/22	SHELBY	41931847	LEGACY RESERVES OPERATING LP	New Drill	12500
7/22/22	PANOLA	36538762	R. LACY SERVICES, LTD.	New Drill	12000
7/22/22	PANOLA	36538760	R. LACY SERVICES, LTD.	New Drill	12000
7/26/22	CASS	06730858	PERFORMANCE OPERATING PARTNERS,	New Drill	10300
7/26/22	CASS	06730862	BARROW-SHAVER RESOURCES CO.	New Drill	12000
7/26/22	RUSK	40133562	CRATON OPERATING LLC	Recompletion	10575
7/27/22	PANOLA	36538778	TANOS EXPLORATION II, LLC	New Drill	9936
7/28/22	PANOLA	36538761	R. LACY SERVICES, LTD.	New Drill	12000
7/28/22	PANOLA	36538779	TANOS EXPLORATION II, LLC	New Drill	9926
7/28/22	HARRISON	20335537	SPONTE OPERATING, INC.	New Drill	12000
7/29/22	HARRISON	20335539	SPONTE OPERATING, INC.	New Drill	12000
7/29/22	HARRISON	20335540	SPONTE OPERATING, INC.	New Drill	12000
7/29/22	PANOLA	36537628	GLASSELL PRODUCING COMPANY, INC.	Recompletion	6950
7/28/22	PANOLA	36538779	TANOS EXPLORATION II, LLC	New Drill	9926
7/28/22	HARRISON	20335537	SPONTE OPERATING, INC.	New Drill	12000
7/29/22	HARRISON	20335539	SPONTE OPERATING, INC.	New Drill	12000
7/29/22	HARRISON	20335540	SPONTE OPERATING, INC.	New Drill	12000
7/29/22	PANOLA	36537628	GLASSELL PRODUCING COMPANY, INC.	Recompletion	6950

See Map and Louisiana Permits on previous pages.

Membership Directory

To All Shreveport Geological Society Members:

The membership directory has always been a very useful tool for keeping in touch with our friends and business associates. The last directory was published with the 2017-18 data base. A new directory will come out this year and it is important that the information that we have for you is still current. Please verify that our data is correct or make changes if required. Brenda will be available to take pictures at upcoming meetings and also at the Shreveport Petroleum Data Association location. If you would like to submit a picture electronically please do so in .jpg format.

Questions? Contact ShreveportGeological@gmail.com.



LOUISIANA BOARD OF PROFESSIONAL GEOSCIENTISTS

Geoscientist Licensing in Louisiana

Did you know?

When you attend a monthly Shreveport Geological Society meeting, you earn one hour of continuing education credit for your LBOPG license. This is a simple and enjoyable way to get your hours! You can also find links to continuing education ethics credit courses at <https://sgs1.org/continuing-education/>.

Ready to track your CE hours?

Visit the LBOPG website today to download your continuing education log template lbopg.org/resources/continuing-education

A	B	C	D	E	F	G	H	I	J	K	L	
1	Name:				PG License #:		Renewal Date:					
3	Date	Code*	Activity Title	Instructor	Sponsor Organization Name Location		Credits Time CEU PDH					
4												
5												
6												
7												
8												
9												
10												
11												
12												
13												
14												
15												
16												
17												
18												
19												
20												
21	Total PDH claimed this renewal period:										0	
22	PDH carry over from previous year claimed for this report:											
23	Total PDH claimed to meet minimum requirements:										0	
24	PDH to be carried over to next year's report:											
26	Audits will be conducted randomly and/or as needed to confirm CE activities each year.											
27	It is your responsibility to collect and maintain proof of attendance and completion of CE activities in case an audit is called.											
28	*Code		Conversion of =	PDH		Minimum hrs. to renew	Maximum hrs. Allowed/Period					
29	Participant Credit	P	Each Direct Hour =	1		14	Geoscience Credits	Society Meetings				12
30	Instructor Credit	I	CEU, Papers, etc.=	10		1	Ethics Credits	Self directed Coursework				5
31	Authorship Credit	A	College Qtr. Hr.=	10		15	Total	Authorship - Paper				10
32	Meeting Credit	M	Semester Hour =	15				Authorship - Book				45
33	Ethics Credit	E	Instructor =	3XPDH								
35	This form was intended to be a one (1) letter size page, i.e. one (1) years record of CE activity or 15 PDH.											
36	It is recommended that additional data be entered into a second (or third, etc.) worksheet in this spread sheet workbook.											
37	An entire (blank) form can then be copied into the new worksheet and the sheet tab named as the report year.											
38	This workbook has two (2) new sheets included as examples so you can start the process of recording your CE activity.											
39												

Like what you see?

Fill out and mail in this form or find it online at SGS1.org.

You can renew online instead
 of filling out this card!
 ★ www.sgs1.org ★

Active \$25 / yr	
Associate \$25 / yr	
Honorary \$0 / yr	
Student \$5 / yr	
Optional Donation SGS Scholarship Fund	
Optional Donation Faithful Friends	
Total Payment	

NAME (Please Print) _____

Check if new applicant or change of address.

DATE _____

APPLICANT OR MEMBER PLEASE TYPE OR PRINT

LAST NAME	FIRST	INITIAL	NICKNAME			
COMPANY		POSITION OR TITLE				
COMPANY MAILING ADDRESS	CITY	STATE	ZIP	COMPANY PHONE		
HOME ADDRESS	CITY	STATE	ZIP	HOME PHONE		
FAX NUMBER	E-MAIL ADDRESS		CELL PHONE			
SCHOOL	DEGREE	MAJOR	YEAR			
PROFESSIONAL AFFILIATIONS	AAPG <input type="checkbox"/> APGS <input type="checkbox"/>	GSA <input type="checkbox"/> PS <input type="checkbox"/>	SEG <input type="checkbox"/> AGI <input type="checkbox"/>	SEPM <input type="checkbox"/> SIPES <input type="checkbox"/>	AIME <input type="checkbox"/> SPE <input type="checkbox"/>	SPWLA <input type="checkbox"/> OTHER _____

OUTLINE OF EXPERIENCE _____

SPOUSE'S NAME _____

PREFERRED MAILING ADDRESS
 HOME BUSINESS
 EMAIL ME THE NEWSLETTER
 (no printed copy will be mailed)

QUALIFICATIONS FROM BY-LAWS

In order to be eligible for active membership, an applicant shall be engaged in the practice or teaching of geology or related sciences.

In order to be an associate member, an applicant shall be interested in geological science but not actively engaged in the practice or teaching of geology or related sciences.

TO THE EXECUTIVE BOARD:

I hereby apply for ACTIVE ASSOCIATE membership in SHREVEPORT GEOLOGICAL SOCIETY and pledge myself to abide by its Constitution and By-laws.

Date: _____ Signature: _____

SPACE BELOW TO BE USED FOR PROCESSING ONLY

Membership Committee

Received: _____

Approved for: Active
 Associate
 Student

Executive Board

Approved: _____

SECRETARY

Date: _____

SGS HONORARY MEMBERS

James D. Aimer*
William E. Bancroft*
Michael W. Beckman*
Orville Roger Berg
David L. Billingsley, Jr.
B. W. Blanpied*
Prentis L. Boatner, Jr.*
Alan L. Brittain
John Franks*
Victor P. Grage*
John C. Grunau*
J. Frank Harrell*
James B. Harris*
William E. Hayes*
Roy T. Hazzard*
Dr. Leo Hermann*
Kevin B. Hill
Charles J. Hoke*
Perry G. Holloway*
Walter E. Hopper*
E. B. Hutson*
L. Lee Kincade*
Joseph O. Laird*
Paul Todd Landes, Jr.*

W. W. Lincoln*
William R. Meaney
Clarence L. Moody*
John T. Palmer*
Thomas H. Philpott*
William M. Plaster*
Gene R. Robinson*
C. Lane Sartor*
Erwin W. Saye*
Fred R. Schroeder*
C. Ray Scurlock
Walter H. Spears*
William C. Spooner*
George D. Thomas*
Arthur H. Trowbridge
Henry J. Tyler*
Claude N. Valerius*
Warren B. Weeks*
Percy J. Wheeler, Jr.
B. Ross White*
R. M. Wilson*

(* Deceased)