



Shreveport Geological Society **NEWSLETTER**

Volume 68, No. 1

September 2023

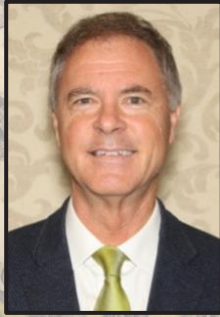


Meet the Board p. 5
Permian Basin p. 13
Mock Dig p. 19



SGS1.ORG

**Message
from**



**the
President**

Hello SGS members! I hope all of you had a wonderful summer spending time with your friends and families! As I write this message, we are experiencing 100+ degree days, but hopefully the temperatures will have moderated by the time you read this. One good thing about these high temperatures is that electric power generation is at a peak which is good for natural gas demand and prices.

My sincere appreciation is extended to our board members whose term ended this summer. Gary Abrams, Bezany Branton, and Michael Danos served our society well over the last 3 years. I would also like to welcome the new board members for 2023-2026: Bezany Branton, Kevin Hill, and Mark Moore. I am sure they will do an excellent job serving the SGS!

Our new 2nd Vice president, Bobby Raines, will be coordinating this year's speaker program and he is working on an exciting lineup! If you have any suggestions for upcoming speakers, please contact Bobby. You don't want to miss our September lunch meeting. Our speaker will be Amy Close who will be giving us a Permian Basin overview. The title of her presentation is: The Permian Basin: A World-Renowned Oil and Gas Producing Region.

The annual ALTAPL – SGS Golf Tournament will be held at East Ridge Country Club on Friday, October 6th, 2023. This is always a well-attended event, and I encourage all of you to support by sponsoring and/or playing. There will be a morning and afternoon flight.

On another note, in a cost savings move, the SGS Board has decided that effective January 1, 2024, we will go to a digital only monthly bulletin and will no longer produce the printed version. When you renew your SGS membership, please make sure you update your email address if necessary.

Lastly, I am honored to be your president for the upcoming SGS 2023-2024 calendar year. As many of you know, 2024 will be the 100th anniversary of the Shreveport Geological Society! To get our anniversary year started in style, our October lunch meeting will be held as a dinner meeting. The date has been set for Friday, October 20th, and it will be held at the Petroleum Club. Please plan on bringing your spouse or significant other for an evening of fun and fellowship. More details will follow in next month's bulletin.

All the Best!

Kurt

Faithful Friends 2022 - 2023

Milbird Resources, LLC

Charles Gerard

Wild Oak Gas Co., Inc.

Joe White, Jr.

Stroud Exploration
Company, LLC

Joseph McDuff

Williamson and
Associates, LLC

Sartor Richardson

Spanoil Incorporated

John E. Atkins

Steve White, Inc.

Sugar Creek Producing

Hill Geophysical
Consulting, LLC

David Hart

Scott Caswell

Grigsby Petroleum, Inc.

William Meaney

Thomas Wyche

Marlin Exploration, LLC

Jon Saye

Kingwood Exploration

David L. Billingsley, Jr.

Kelly Byram

Toledo Mudlogging, Inc.

Bobby Raines

Christopher D. Franks

Robin Smith

Matthew Chumley

William Downs

Scott Comegys

Ian Byram

Stuart Oden

Windell Phillips

Leslie Broussard

John Stafford Comegys

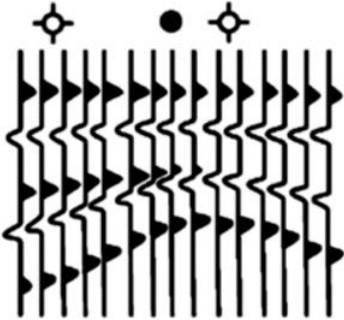
Louise F. Pearce

Johnson Energy

Thank You!

To be a Faithful Friend for 2023-2024,
please contact Bezany Branton.

Hill Geophysical Consulting



Kevin B. Hill

*Integrating Geophysical Technology
with Geology*

**What's Under Your
Feet? Find out:
HILLGEO.COM**



415 TEXAS ST., SUITE 200
SHREVEPORT, LA 71101

318.221.3329
kevin@hillgeo.com



Camterra Resources

Main Office

2615 East End Blvd. South
Marshall, Texas 75672
Telephone: (903) 938-9949
Fax: (903) 935-0521

Dallas Office

100 Crescent Court
Suite 1800
Dallas, TX 75201
Telephone: (214) 310-0512

www.camterra.com

Chief Executive Officer: Zach Carlile

President: Paul Marchand

Land Manager/General Counsel: Allen Staggers

Asst. General Counsel: Pam Johnson

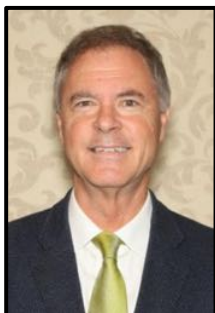
Director of Operations and Engineering: Jim Larkin

Sr. Landman: Jason Derebery

Landman/Gas Marketing/Regulatory: Josh Searle

Seeking Opportunities in Texas, Louisiana, Arkansas, Mississippi, and New Mexico

Meet The Board



President Kurt Ley began his career as a geologist for Superior Oil in 1981. He later worked for Tenneco, Apache, and Stroud Production before co-founding Kingwood Exploration in 2007. He has served on several industry and local boards and was SGS President in 2008. Kurt and his wife Patti stay busy with their 10 grandchildren, but in their spare time, they enjoy traveling – splitting their trips between mountain hikes and the beach. He is honored to serve as President of the SGS Board again this year.



First Vice President Bezany Branton, has been a geologist at Jones Environmental, Inc. for 19 years. She moved from Venezuela in 1997 to attend Louisiana Tech University. She graduated with a BS in Geology in 2004. In her free time, she enjoys spending time with her adorable kids, Leo and Vanessa, and their puppies, Rocco and Bruno.



Second Vice President Bobby Raines has worked as an oil and gas geologist and environmental geologist in the Shreveport area for the past 38 years. Bobby graduated from Northeast Louisiana University (Now ULM) with a BS in Geology in 1982. He most recently worked at Cardinal Gas Storage Partners and ALTEC Environmental Consulting. He is currently self-employed providing oil and gas/environmental consulting services. Bobby enjoys playing golf and traveling with his wife.



Thomas C. Wyche

CERTIFIED PETROLEUM GEOLOGIST

Horizontal & Vertical Projects
E.Tx., N.La., S.Ark.

333 Texas St., Suite 703
Shreveport, LA 71101
318.465.2944
geo1tcw@gmail.com

AAPG-CPG

Cypress Operating, Inc.



STEVEN A. SINGLETARY
BEN ROBINSON

Petroleum Geologists

Office: (318) 424-2031
Fax: (318) 425-8140

330 Marshall Street, Suite 930
Shreveport, LA 71101



401 Edwards Street, Suite 1200
Shreveport, LA 71101

P.O. Box 1367
Shreveport, LA 71164

office: (318) 222-8406
fax: (318) 222-6061
email: mei@marlinexploration.com

Jon Q=Petersen
President

S. Cody Lenert
Geologist

Autie T. Orjias
V.P./Land Manager

Ryan Q=Petersen
Land

Dean Giles
Secretary/Treasurer



SEI Seismic Exchange, Inc.

Dallas • Denver • Houston • New Orleans • Oklahoma City
Corpus Christi • Tulsa

Layne Williams
New Orleans Region
Marketing Manager

201 St. Charles Avenue, Suite 4300
New Orleans, LA 70170-4300
Direct: 504-510-2508 Fax: 504-581-9591
Cell: 504-458-3056
E-MAIL: lwilliams@seismicexchange.com

Meet The Board

(continued)



Secretary Kelly Byram is currently a geologist for TYGR Energy. He has spent his career generating prospects in the Ark-La-Tex for various companies including Crystal Oil, Medallion Production Co., KCS Resources and Petrohawk Energy. Kelly is a private pilot who enjoys flying whenever and wherever he can. He is married and has two sons and a daughter.



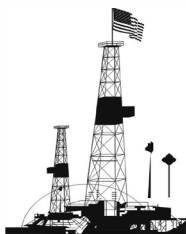
Treasurer Will Downs is an established oil and gas industry executive with 42 years of experience in public and private E&P, A&D, and service sectors. He earned a B.S. in Geology from Centenary College of Louisiana.



Board Member Miller Horton is a Geologist with Jones Environmental and looks forward to his second year as an SGS board member. In his free time, Miller enjoys hiking, bicycling, photography and spending time with his family at the lake.



Board Member Richard Taylor is serving his second term on the Board of Directors for SGS. He carried the positions of 2nd Vice President and President from 2005-2007. Mr. Taylor has been an independent geologist for most of his career. In his free time, he enjoys listening to local musicians with friends.



PALMER

PETROLEUM, INC.

Exploration and Development

Operations

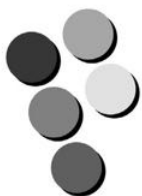
Oil and Gas Investments

425 Ashley Ridge Blvd., Suite 360
Shreveport, Louisiana 71106

Phone: (318) 222-0517

www.palmerpetro.com

Fax: (318) 424-3256



Paragon

P R E S S

DESIGN PRINT MAIL

318-868-3351

www.ParagonPress.net

Meet The Board

(continued)



Board Member Mark S. Moore is President of Approach Environmental. He has worked as a geologist since 1986 in oil and gas exploration, production, and environmental consulting. Mark holds a B.S. in Geology and A.S. in Petroleum Engineering Technology from Louisiana Tech as well as P.G. certification in Arkansas, Texas, and Louisiana. He and his wife, Janet, have two children and two grandchildren. Mark serves as a Deacon at

First Baptist Bossier City, where he and Janet have been active members since 1992. Mark and Janet enjoy traveling and spending time with their family, especially the grandchildren, and friends.



Board Member Kevin Hill has worked as a consulting geophysicist/geologist in the Shreveport area for the past 38 years. Prior to that, Kevin worked for Sonat, Forest Oil and Cities Service. LSU (BR) bestowed a BS-Professional degree on Kevin in 1977. He is currently president and CEO of Hill Geophysical Consulting, LLC and has worked around the world in oil and gas, mining and property valuation. He is past president and an honorary

member of the SGS. When he isn't staring at his workstation, Kevin likes to play guitar and also travel to exotic places to see the sights and take in the food and wine.



Executive Assistant to the Board Annie Green is a Geotech for Nadel and Gussman and looks forward to her seventh year working with Shreveport Geological Society. Additionally, she serves as Chairman of the Metropolitan Planning Commission, Vice President of the Christmas Festival, and Board Member of National Night Out in her hometown. In her free time, Annie enjoys outdoor adventures with her husband and three sons.



MILESTONE ENERGY, LLC

Oil & Gas Exploration and Development

Joseph A. Lott

Geologist / Managing Partner

Zach Kelly
Geologist

Zach McDonald
Geologist

Thomas A. Giles
Land Manager

333 Texas Street, Suite 516
Shreveport, Louisiana 71101
jlott100@bellsouth.net

Office: 318.212.0470
Fax: 318.212.0469

- Looking for Prospects
- Geophysical Consultant
- Landmark Graphics Corp. Software
- Synthetic Seismograms, modeling and cross sections



- Digitizing capability
- 2-D & 3-D Seismic Acquisition, Processing & Interpretation
- SeisVision 2-D & 3-D interpretation and mapping software

Bobby Ben Taylor - President

O: 120 S Broadway, Suite 102
Tyler, Texas 75702
Mobile: (903) 521-3182

H: 7130 Holly Square Court
Tyler, Texas 75703
Email: taylor@webfoxmail.com

LOOKING FOR PROSPECTS

Let me tailor your geophysical needs.

MUSLOW OIL & GAS, INC.

330 Marshall Street
Suite 628
Shreveport, LA 71101

Eric Weiss
President

(318) 221-8694
Fax: (318) 227-2106

R. LACY / GRAIN ENERGY

*Oil and Gas Investments
Exploration and Development*

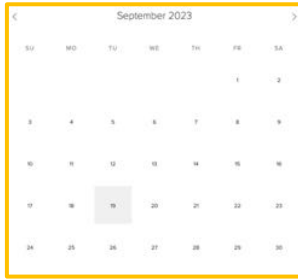
222 EAST TYLER STREET
LONGVIEW, TX 75601
903-758-8276 (O)

Chris Bresch
V.P. Exploration
cbresch@rlacy.com

Hunter Brumble
Staff Geoscientist
hbrumble@rlacy.com

Scott Caswell
Sr. Geophysicist/Geoscientist
scaswell@rlacy.com

Calendar of Events



View
this interactive calendar at SGS1.org

September 14

RSVP for the Meeting

September 19

Monthly Meeting: Amy Close presents "The Permian Basin:
A World-Renowned Oil and Gas Producing Region"

In-person 11:30 a.m. - 1 p.m.;

Petroleum Club 15th Floor

Virtual 12:00 p.m. - 1 p.m. Zoom

September 30 - October 8

Mock Dig at the Red River Revel – Volunteers Needed

October 6

30th Annual ALTAPL/SGS Golf Tournament
at East Ridge Country Club

On the Cover:

Your SGS Board for 2023-2024, photographed by Brenda Pender.

Interior Art:

Page 1 "Fabulous Finds Series No. 38" (*detail*) by Christine Bailey,
courtesy of the Bailey Art Gallery at 214 Texas Street.

More at Bailey-Gallery.com.

Page 7 "Mountain Moonlight" (*detail*) by Mary Virginial Hill.

Email news and art to: 1RachelMcNerney@gmail.com

The September Meeting

Make your
RESERVATION

Amy Close

presents

"The Permian Basin:
A World-Renowned Oil and Gas Producing Region"

Tuesday, September 19

Virtual

12:00 p.m. Zoom

\$10

In-Person

11:30 a.m. Petroleum Club of Shreveport

\$25

We encourage members to invite guests, spouses, and friends to any of our meetings.

If you'd like a seat, kindly **RSVP**
by **Friday, September 15** at [SGS1.org](https://www.sgs1.org)
or by calling Bobby Raines at 318-218-7945.

Kingwood Exploration, LLC
Oil & Gas Exploration
and Production



Kurt M. Ley

Exploration Manager & Partner

Robert E. Braswell

Engineering/Operations Manager & Partner

416 Travis St., Suite 1100
Shreveport, LA 71101

Phone: 318-946-8585
Fax: 318-946-8287

kurt.ley@kingwoodexploration.com
robert.braswell@kingwoodexploration.com



Established by G.M. Anderson

333 TEXAS ST., SUITE 2020

SHREVEPORT, LA 71101-5357

Phone: (318) 227-2000

Fax: (318) 425-5935



★ Geological ★ Environmental

FOR ALL YOUR
GEOLOGICAL AND
ENVIRONMENTAL NEEDS

866-463-5600

20 Ford Road
Many, LA 71449

Security Exploration, Inc.

8509 Line Avenue
Shreveport, LA 71106



J. Stafford Comegys
President

Donna Walker
Geologist

Barbara Lyles
Office Manager

OIL & GAS EXPLORATION

Tel: (318) 222-1066

Fax: (318) 222-4932

Biography

Amy Close has 22 years of experience in the petroleum industry, with a focus on acquisitions, divestitures, exploration, and asset development. With experience in multiple US basins, as well as offshore and international experience, she has led teams in over \$1 billion in total acquisitions and over half a billion in divestitures while managing large assets and improving production.



Currently, Amy serves as the VP of Business Development and Geoscience at Digital Operating Company, responsible for identifying and developing new business opportunities that align with the overall company strategy. Prior to her current role, Amy was Director of Geoscience at Laredo Petroleum. She is past president of Tulsa Geological Society, Tulsa Geological Foundation Board member, ADAM Tulsa Board member, and O&G Committee member Tulsa Irish Fest.

Abstract

The Permian Basin is a world-renowned oil and gas producing region located in West Texas and southeastern New Mexico. It is named after the Permian geologic time, which occurred from 251 to 291 million years ago. The basin is known for its rich exploration and development history, combined with a perfect geologic setting that has made it a super



HOST OF THE REGULAR LUNCHEON MEETINGS FOR THE
SHREVEPORT GEOLOGICAL SOCIETY

Lunch Buffet
MONDAY - FRIDAY

**Newly Renovated
Member's Lounge**
MONDAY - FRIDAY
AFTERNOONS

416 TRAVIS ST
15TH & 16TH FLOOR
(318) 425-4251



David Meadows
Manager

Mid South Tower Bldg.
416 Travis Street, Suite 1414
Shreveport, LA 71101

Phone: 318-425-7617
Fax: 318-425-1385
Email: jmexploration@comcast.net

BRAMMER

ENGINEERING, INC.

Services:

- **Drilling**
- **Completion**
- **Construction**
- **Production**
- **HSE**
- **Regulatory**
- **Land**
- **Accounting**
- **Risk Management**
- **Information Systems**



www.brammer.com
318.429.2345 o • 318.429.2340 f
401 Edwards Street, Suite 1510, Shreveport, LA 71101

WLS

CORPORATION

**OIL & GAS
EXPLORATION & PRODUCTION**

Wayne L. Simpson
President

Philip Davis
Geologist

416 Travis Street, Suite 1006
Shreveport, Louisiana 71101

Office: (318) 425-2978
Fax: (318) 425-3166

basin, taking its place at the table with other major oil and gas producers in the Middle East and Latin America.

Since the first well was drilled in 1920, this area has produced over 30 billion barrels of oil, with almost an equal amount still remaining. The Permian Basin has evolved over the years, with innovative technologies and innovations leading to increased production levels. In the 2010s, horizontal drilling revitalized the basin, with unconventional targets dominating the drilling program in the region.

This drilling has triggered record production levels, courtesy of the swallow sea depositional system during the Lower Permian time. The potential for oil and gas production in the Permian Basin remains high, with almost half of the original oil still to be recovered.

This presentation aims to provide an overview of the Permian Basin's history of deposition, the expansion of oil and gas production, and the potential production remaining from multiple targets. It will delve into the geologic setting of the region, the evolution of drilling technology, and the impact of horizontal drilling on the basin's production levels. Additionally, it will explore the potential for future production in the Permian Basin, including the multiple targets that are yet to be explored.

Overall, the Permian Basin continues to be one of the most important oil and gas producing regions in the world, with a rich history and promising future.

BARROW-SHAVER RESOURCES COMPANY

Oil & Gas Exploration & Development

Scott Owen Shaver

Managing Partner and Exploration Manager

903-593-5221 Office

903-593-1692 Fax

903-561-4711 Home

903-582-4711 Farm

903-245-4999 Mobile

977 Pruitt Place

Tyler, Texas 75703

sos-bsr@tyler.net



Drilling Contractor

Oil & Gas Operator

Turnkey Services

Well Service & Workover

Working Interest Participant

318-992-4111

P. O. Box 2990, Jena, LA 71342

justissoil.com

CAPLIS FORESTRY, LLC

JEFFREY W. CAPLIS

-CONSULTING FORESTER-

-complete forestry services-

- Timber Appraisals • Timber Management • Timber Cruising •
- Damage Appraisals • Tree Planting •

CELL: 318-617-9016

OFFICE: 318-752-3662

586 CAPLIS SLIGO RD.

BOSSIER CITY, LA 71112

B.S. LOUISIANA TECH: SCHOOL OF FORESTRY

STROUD PRODUCTION, LLC

333 Texas Street, Suite 860

Shreveport, Louisiana 71101-5302

Voice: (318) 429-2260

Fax: (318) 429 2255

Email: ras@spllc.com

Mike Rogers Drilling Co., Inc.

Drilling & Interest Participation

MIKE ROGERS, PRESIDENT

CRAIG ROGERS, VICE PRESIDENT

Office: 870-234-2356 • Fax: 870-234-7487

1708 N. Vine Street • P. O. Box 126 • Magnolia, AR 71754

email: mrdc1981@gmail.com

Advertise Here!

Contact Kurt Ley at 946-8585

Mock Dig Volunteers Needed

Each year the Shreveport Geological Society participates in the Red River Revel by organizing the Mock Geological Dig, courtesy of Security Exploration. SGS members volunteer to introduce young people to the excitement of scientific discovery. Rocks, minerals and fossils are scattered in a giant sand box that is roped off in squares, just like a real geological dig!

Children are encouraged to claim a section and hunt for quartz, pyrite, sharks' teeth, and polished rocks for 15-30 minutes, after which SGS members tell them about what they found and get to take home. Volunteers with or without a geology background can help reseed the dig. Young adults high-school- to college-aged are encouraged to volunteer at the dig along with SGS members to learn more about rocks and minerals and to understand how important science is in our community.

Please volunteer for a shift that fits your schedule! You will also receive a commemorative t-shirt. More details coming soon.

The Mock Dig will be open
September 30 – October 8





Shreveport Petroleum Data Assn., Inc.

333 Texas Street, Suite 900
Shreveport, LA 71101
(318) 429-2237

Fax (318) 429-2441

Website : www.spdalogs.org
spda@spdalogs.org

Natalie Wingrove, Manager
318-429-2236
natalie.wingrove@spdalogs.org



Bobby E. Jelks
President

Faith N. Gilbert
CFO

P.O. Box 7726
Shreveport, LA 71137-7726
Phone: (318) 221-2688
Fax: (318) 459-2935

Edward Yarborough
Exploration Manager

James Light
Land Manager



Kalmbach
Production Company, LLC

Sam Kalmbach
Geologist

400 Travis Street, Ste. 516 office: (318) 424-6566
Shreveport, LA 71101 cell (318) 470-9977
e-mail: sam.geo.kpc@gmail.com

Joe R. White, Jr.
Petroleum Geologist

8505 Dogwood Trail
Haughton, LA 71037
Cell. 318-423-9828
Hm. 318-949-3539
Available for Consulting

AAPG CPG #5580
MS RPG #0097
LA CPG #345
Jwhite1362@aol.com
Joerjr@gmail.com

GRIGSBY PETROLEUM, INC.

Oil & Gas Exploration
and Production

333 Texas St., Suite 2285
Shreveport, LA 71101
Phone (318) 425-5306
Fax (318) 425-3733

David L. Billingsley, Jr.
Certified Petroleum Geologist

400 Travis Street, Suite 1230
Shreveport, LA 71101 Cell Phone
DLBJR1@aol.com (318) 426-4320

MILBIRD RESOURCES, LLC
Oil & Gas Exploration

Maurice N. Birdwell
Managing Partner

AAPG Certified Petroleum Geologist
Reg. Prof. Geol. Ark. La. Miss. Tex

2043 Oak Ridge Drive 601.936.6939
Pearl, MS 39208 mnbirdwell@comcast.net

30th ANNUAL ALTAPL-SGS GOLF TOURNAMENT

P.O. Box 1296
Shreveport, LA 71163

2023 Tournament Committee

Claire Iles
(text)318-347-0376

Hunter Temple
318-243-1134

Crystal Dupuy
318-840-4088

John Barr
318-588-6570

Preston Smith
318-537-0706

Email us at
golf.altapl@gmail.com

Dear Friends and Sponsors of the Shreveport Geological and Ark-La-Tex Landman Societies:

It's that time of the year again to announce the upcoming **SGS/ALTAPL Golf Tournament** to be held at **East Ridge Country Club** on **Friday, October 6, 2023**. The event will kick off with breakfast at 7:00 a.m. followed by a shotgun start at 8:00 a.m. Lunch will be at 11:30 a.m. and proceed with a shotgun start at 1:00 p.m. followed by an evening of food, beverages, awards, and door prizes.

Please consider and respond as soon as possible with your much-appreciated sponsorship, so a realistic budget can be proposed by our planning committee. A prompt response will also assure that your contribution will be affirmed and recognized by all in attendance. All sponsors will be included on a banner which will be displayed at check-in and at the awards reception.

Potential Sponsorship Categories

Sponsor:	all gift amounts accepted and appreciated
Hole Sponsor:	\$500
Lunch Sponsor:	\$1,500
Tournament Hat Sponsor:	\$2,000
Awards Dinner Sponsor:	\$3,000
Tournament Shirt Sponsor:	\$5,000

Also, if your company has merchandise which they would like to add as tee gifts please send them (240 count) to the address listed below.

PLEASE DIRECT ALL FINANCIAL CONTRIBUTIONS TO:

**ALTAPL/SGS Golf Tournament
P.O. Box 1296
Shreveport, LA 71163**

***** Make checks payable to the ALTAPL and state in the Memo your desired sponsorship category *****

We look forward to your involvement not only in sponsorship, but also in the camaraderie of the golf tournament. If you have any questions please call us at the numbers listed or email us at golf.altapl@gmail.com.

Sincerely,

Your 2023 Tournament Committee



JON E. SAYE

PETROLEUM GEOLOGIST

Office: 318-221-4504
 Fax: 318-221-4516
 Cell: 318-458-1515

1015 Mid South Twr. • P. O. Box 137
 Shreveport, LA 71161

jsaye@prodigy.net

COUTRET & ASSOC., INC.

Petroleum Reservoir Engineers
 Property Evaluation, Reservoir Engineering
 Fluid Injection, Property Management

Louisiana Tower
 401 Edwards Street
 Shreveport, LA 71101

Telephone: (318) 221-0482
Fax: (318) 221-3202

E-mail: rmcgowen@coutret.com

ODEN & ASSOCIATES, LLC

Oil and Gas Exploration

Phone: 318-222-2400

Fax: 318-226-0840



ALAN SCHLICHTEMIER

Geologist

P.O. Box 1806
 Shreveport, LA 71166

416 Travis Street, Ste. 400
 Shreveport, LA 71101
odenassoc@bellsouth.net



**Delta-T
 Geophysical
 Consulting, Inc.**

Comprehensive Geophysical Services

- Kingdom Suite 2d/3d pak
- Geographix
- GMA
- Neuralog
- Mesa 3-D Design
- Digirule

Woodie Huffman, CEO

401 Edwards Street, Suite 826
 Shreveport, LA 71101-5510

Phone: (318) 221-0414
 Fax: (318) 425-0688

Email: delta@bellsouth.net

Williamson

OIL & GAS, INC.

Oil & Gas Development



Office: (318) 221-2923

400 Travis Street

Fax: (318) 221-3488

Suite 1410

Email: bob@williamsonogi.com Shreveport, LA 71101



SGC
ENERGY
 CONSULTING LLC

Scott G. Comegys, P.G.
LA #812

333 Texas St., Suite 825
 Shreveport, LA 71101

(318) 426-3689

scott@sgcenergy.com

Cowgill & Associates, L.L.C.

Oil & Gas Exploration & Production

Stephen C. Cowgill
 Geologist/Managing Partner

P. O. Box 72180
 Bossier City, LA 71172-2180
cowgill@suddenlink.net

Office: 318.429.2170
 Fax: 318.429.1170
 Cell: 318.455.9516

SEISMIC INTERPRETATION
 Hz DRILLING PROGNOSIS

EXPLORATION | ASSET EVALUATION

WI PARTICIPATION | MARKETING

2023 ALTAPL/SGS
SPONSOR FORM

Friday, September 6, 2023

Shotgun Start at 8:00 A.M. and 1:00 P.M.

East Ridge Country Club

SPONSOR:

All gift amounts

accepted and appreciated

\$ _____

**2023 Tournament
Committee**

Claire Iles
(text) 318-347-0376
Iles_claire@yahoo.com

HOLE SPONSOR:

\$500.00

\$ _____

Hunter Temple
318-243-1134

LUNCH SPONSOR:

\$1,500.00

\$ _____

Crystal Dupuy
318-840-4088

AWARDS DINNER SPONSOR:

\$3,000.00

\$ _____

John Barr
318-588-6570

TOURNAMENT HAT SPONSOR:

\$2,000.00

\$ _____

Preston Smith
318-537-0706

TOURNAMENT SHIRT SPONSOR:

\$5,000.00

\$ _____

If your company has merchandise which they would like to add as tee gifts please send them (240 count) to the address listed below.

Email us at
golf.altapl@gmail.com

**PLEASE DIRECT ALL FINANCIAL
CONTRIBUTIONS TO:**

**ALTAPL/SGS Golf Tournament
416 Travis Street, Suite 1401
Shreveport, LA 71101**

***** Make checks payable to the ALTAPL and state in the Memo
your desired sponsorship category *****

BER-EX-CO., INC.

Orville Roger Berg, Ph.D.

Exploration, Exploitation
Seismic Evaluation
Domestic, International

400 Travis St., Suite 1612
Shreveport, LA 71101-3108
(318) 220-0300
orberg@bellsouth.net

9949 Beaver Creek Drive
Shreveport, LA 71106
(318) 798-1748

Reynolds Drilling Company, Inc.

7591 Fern Ave., Suite 2001
Shreveport, Louisiana 71105-5502

Phone: (318) 227-0118

Fax: (318) 227-0171

reydrill@bellsouth.net

Terry Pat Reynolds
President

GERARD ASSOCIATES, L.C.

OIL & GAS EXPLORATION
DEVELOPMENT AND ACQUISITIONS

J. A. Wojtkiewicz • Charles Gerard

625 Market St., Suite 250
Shreveport, LA 71101
Tel. (318) 221-0761 • FAX (318) 221-8835



SPANOIL INCORPORATED

11050 BELLE ROSE CIRCLE
SHREVEPORT, LA 71106
PHONE: (318) 218-5711
FAX: (318) 221-2372
anthony@spanoil.com

ANTHONY J. SPANO
PRESIDENT



DONNER P R O P E R T I E S

LOGAN J. HUNT, CPL
Argent Mineral Management, LLC, Manager

318.251.5830
lhunt@argentmineral.com



30th ANNUAL ALTAPL-SGS GOLF TOURNAMENT

P.O. Box 1296
Shreveport, LA 71163

Friday, October 6, 2023

Start at 8:00 am and 1:00 P.M.

East Ridge Country Club

2023 Tournament Committee

Claire Iles
(text) 318-347-0376
iles_claire@yahoo.com

Hunter Temple
318-243-1134

Crystal Dupuy
318-840-4088

John Barr
318-588-6570

Preston Smith
318-537-0706

Email us at
golf.altapl@gmail.com

The golf entry fee includes green fees, golf cart, golf apparel, hamburger bar lunch, hors d'oeuvres dinner, beverages, and door prizes. The Social Fee includes dinner, beverages, door prizes and entertainment. ****The social fee must be paid ahead of time as no money will be collected at the door.***

The golf tournament will be a flighted four man scramble. Assemble your foursome with all handicaps as well as **contact phone number, email address and SHIRT SIZE (or we will give you a smedium).**

A handicap MUST be listed for each member of your foursome in order to properly flight the teams. Prizes will be rewarded for flight winners, hole-in-ones, closest to the hole on all par threes and winners of the long drive contests.

Due to the overwhelming popularity of this annual event, the tournament will be held for society members and guests only. **Please make sure your SGS & ALTAPL dues are current and please make sure team payment is made timely!**

The **deadline** for entering will be **Friday, September 29, 2023** and will be limited to a first come first served basis. The field is **LIMITED TO 60 TEAMS, 30 IN THE MORNING WITH A 8:00 AM SHOTGUN AND 30 IN THE AFTERNOON WITH A 1:00 PM SHOTGUN.**

The event will kick off with breakfast at 7:00 followed by a shotgun start at 8:00 a.m. Lunch will be at 11:30 a.m. and proceed with a shotgun start at 1:00 p.m. followed by an evening of food, beverages, awards, and door prizes.

If you have any questions, please call us at the numbers listed or email us at golf.altapl@gmail.com.

Sincerely,

Your 2023 Tournament Committee



RESOURCES

In times of change, some things remain the same.

SEATED AT DESK:

Denis Poljak, Ph.D., CPM®, CIMA®, CFP®

*Partner
Managing Director
Wealth Manager*

SEATED IN FRONT OF DESK:

Davor Poljak, MBA, CPM®

*Partner
Managing Director
Wealth Manager*

BACK ROW:

Jason Adams, MBA

*Partner
Vice President
Client Relationship
Manager*

Ryan Yarbrough

*Partner
Vice President
Registered Client
Administrative Manager*

John Simpson

*Partner
Vice President
Wealth & Portfolio
Specialist*

Joseph Fell, MBA

*Partner
Vice President
Wealth & Portfolio
Specialist*

Scott Salvail

*Partner
Vice President
Wealth & Portfolio
Specialist*

P POLJAK GROUP
WEALTH MANAGEMENT
 At Steward Partners

333 TEXAS ST., SUITE 2230, SHREVEPORT, LA 71101
 318-674-4100

Securities and investment advisory services offered through Steward Partners Investment Solutions, LLC, registered broker/dealer, member FINRA/SIPC, and SEC registered investment adviser. Investment Advisory Services may also be offered through Steward Partners Investment Advisory, LLC, a SEC registered investment adviser. Steward Partners Investment Solutions, LLC, Steward Partners Investment Advisory, LLC, and Steward Partners Global Advisory, LLC are affiliates and separately operated. Poljak Group Wealth Management is a team at Steward Partners.

Denis Poljak, Ph.D., CPM®, CIMA®, CFP®, Wealth Manager • Davor Poljak, MBA, CPM®, Wealth Manager
 Jason Adams, MBA, Client Relationship Manager • Joseph Fell, MBA, Wealth & Portfolio Specialist • Scott Salvail, Wealth & Portfolio Specialist
 John Simpson, Wealth & Portfolio Specialist • Ryan Yarbrough, Registered Client Administrative Manager

2023 ALTAPL/SGS
TOURNAMENT ENTRY FORM

Friday, October 6, 2023
Start at 8:00 A.M. and 1:00 P.M.
East Ridge Country Club

**** No funds will be collected the day of the event.**

MEMBER

Play Golf & Attend Social \$200.00 _____/ per golfer
Attend Social Only \$40.00 _____

GUESTS & NON-MEMBERS

Play Golf & Attend Social \$250.00 _____/ per golfer
Attend Social Only \$50.00 _____

LIST FOURSOME:

1. _____ *Shirt Size* _____ *Handicap* _____

Phone No. _____ Email: _____

2. _____ *Shirt Size* _____ *Handicap* _____

Phone No. _____ Email: _____

3. _____ *Shirt Size* _____ *Handicap* _____

Phone No. _____ Email: _____

4. _____ *Shirt Size* _____ *Handicap* _____

Phone No. _____ Email: _____

Mail all entry forms and entry fees to:
ALTAPL/SGS Golf Tournament
P.O. Box 1296
Shreveport, LA 71163

*** Make checks payable to the ALTAPL ***

RETURN THIS FORM WITH PAYMENT
OR PAY ONLINE

Meeting Videos Online Now

Visit <https://sgs1.org/continuing-education> to find recordings from this year's meetings available for \$10 each. Contact ShreveportGeological@gmail.com if you have any issues.



[WELCOME](#) / [ABOUT US](#) / [EVENTS](#) / [EDUCATION](#) / [MEMBERSHIP](#)

[SCHOLARSHIPS](#)
[MAPS IN SCHOOLS](#)
[THE MOCK DIG](#)
[LECTURES](#)
[CONTINUING EDUCATION](#)

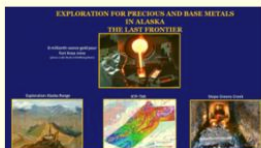
Continuing Education

Shreveport Geological Society members can earn continuing education credit by participating in short courses offered by the SGS on an annual basis, and by taking advantage of the opportunities for continuing education provided below. Fifteen (15) hours of continuing education are required for the annual renewal of a P.G. license, with one of those hours in the area of Professional Ethics. Visit the Louisiana Board of Professional Geoscientists [website](#) for more information. If you have suggestions for continuing education opportunities, please submit them [here](#).

Upcoming Opportunities

Check back soon for more.

SGS Meeting Videos



Exploration for Precious and Base Metals in Alaska - The Last Frontier

\$10.00

Presented by George W. Roth on September 21, 2021



Coring and New Technology

\$10.00

Presented by Blake Mock on October 19, 2021



Making the most out of your geochemical data

\$10.00

Presented by Craig D. Barrie on November 16, 2021

Monthly Permits – July 2023

Provided by ABCD GIS Mapping

Louisiana Permits

Permit Date	County	Well SN	Depth	Permit Date	County	Well SN	Depth
7/13/23	RED RIVER	254262	24500	7/24/23	DE SOTO	254286	28000
7/17/23	RED RIVER	254257	23904	7/25/23	RED RIVER	254287	24500
7/17/23	SABINE	254261	4182	7/25/23	RED RIVER	254288	24500
7/18/23	BOSSIER	254263	1500	7/25/23	RED RIVER	254289	24500
7/18/23	RED RIVER	254264	22367	7/26/23	BIENVILLE	254290	24500
7/19/23	BOSSIER	254271	15947	7/27/23	BOSSIER	254300	2850
7/21/23	CADDO	254282	22544	7/27/23	CADDO	254291	23000
7/21/23	CADDO	254283	22296	7/27/23	CADDO	254292	23000
7/21/23	DE SOTO	254277	23500	7/27/23	CADDO	254293	23000
7/21/23	DE SOTO	254278	23500	7/27/23	DE SOTO	254294	23000
7/21/23	DE SOTO	254279	23500	7/27/23	DE SOTO	254295	23500
7/21/23	DE SOTO	254280	23500	7/27/23	DE SOTO	254296	23500
7/21/23	DE SOTO	254281	23500	7/27/23	RED RIVER	254297	23500
7/24/23	DE SOTO	254285	29000	7/27/23	RED RIVER	254298	23500
				7/27/23	RED RIVER	254299	23500

See Map and Texas Permits on following pages.

Invest in the Future

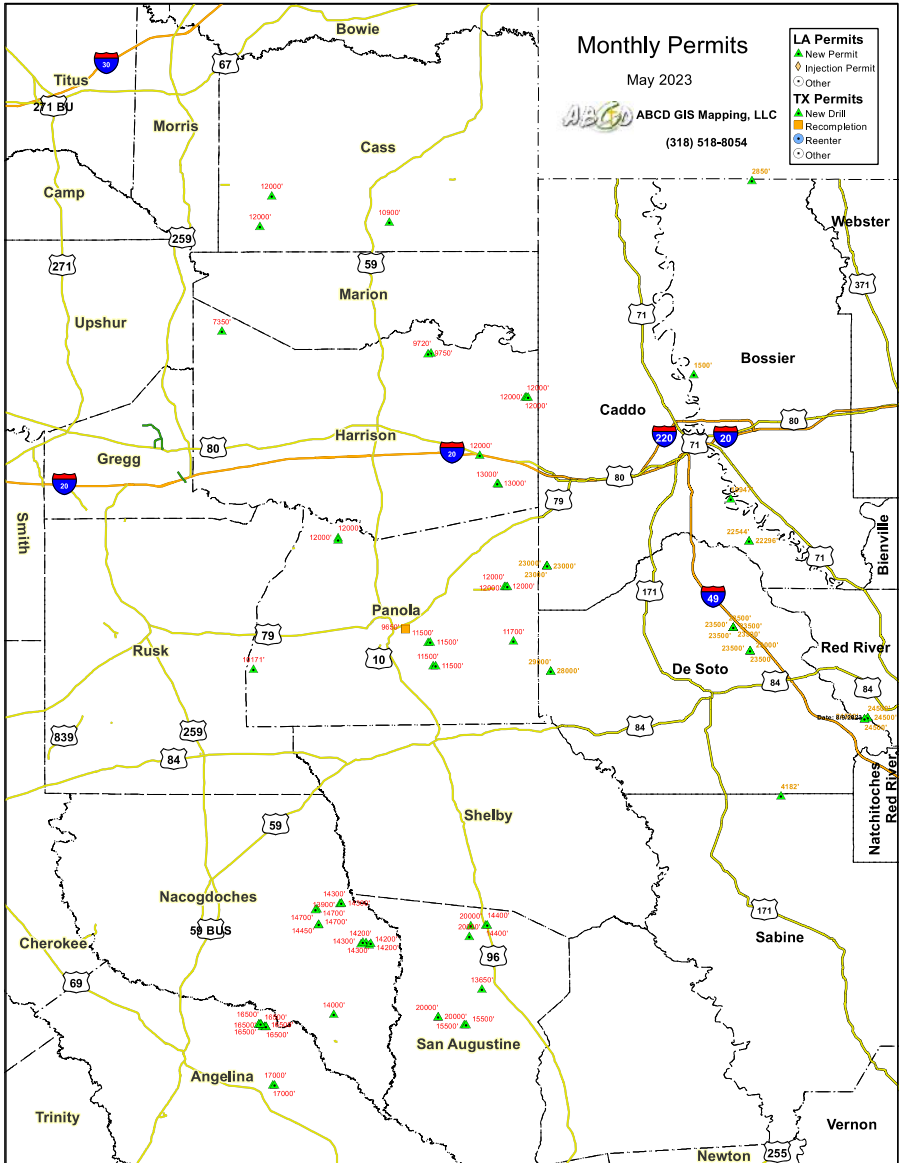
You can **donate** to the **SGS Scholarship Fund** online at SGS1.org or by writing a check to the SGS with “Scholarship” in the memo line, and you may include an “**in memory of**” or “**in honor of**” note as well.

Mail to: Shreveport Geological Society,
P.O. Box 750, Shreveport, LA 71162.

Monthly Permits – July 2023

Provided by ABCD GIS Mapping

Map



See Permits listed on previous and following pages.

Monthly Permits – July 2023

Provided by ABCD GIS Mapping

Texas Permits

AppDate	County	API	TD	AppDate	County	API	TD
	SAN			7/17/23	NACOGDOCHES	34733490	14000
7/5/23	AUGUSTINE	40530795	20000	7/17/23	CASS	06730898	12000
	SAN				SAN		
7/5/23	AUGUSTINE	40530796	20000	7/18/23	AUGUSTINE	40530815	13650
	SAN			7/18/23	ANGELINA	00530492	16500
7/5/23	AUGUSTINE	40530778	20000	7/18/23	ANGELINA	00530493	16500
	SAN			7/18/23	CASS	06730897	12000
7/5/23	AUGUSTINE	40530777	20000		SAN		
7/6/23	PANOLA	36538872	10171	7/18/23	AUGUSTINE	40530817	15500
7/10/23	PANOLA	36538877	12000		SAN		
7/10/23	PANOLA	36538879	11500	7/18/23	AUGUSTINE	40530818	15500
7/10/23	CASS	06730868	10900	7/19/23	HARRISON	20335597	12000
7/10/23	ANGELINA	00530494	16500	7/19/23	PANOLA	36533620	9650
7/10/23	ANGELINA	00530495	16500	7/20/23	HARRISON	20335598	13000
7/10/23	ANGELINA	00530496	16500	7/21/23	HARRISON	20335599	13000
7/13/23	PANOLA	36538880	11500	7/24/23	HARRISON	20335590	7350
7/13/23	PANOLA	36538881	11500	7/24/23	NACOGDOCHES	34733484	14300
7/13/23	PANOLA	36538882	11500	7/24/23	NACOGDOCHES	34733486	14300
7/13/23	ANGELINA	00530497	16500	7/24/23	NACOGDOCHES	34733487	13900
7/13/23	ANGELINA	00530498	16500	7/25/23	PANOLA	36538864	11700
7/13/23	ANGELINA	00530499	17000	7/26/23	PANOLA	36538878	12000
7/13/23	ANGELINA	00530500	17000	7/28/23	NACOGDOCHES	34733491	14700
7/14/23	ANGELINA	00530501	16500	7/28/23	NACOGDOCHES	34733492	14700
7/14/23	ANGELINA	00530502	16500	7/28/23	NACOGDOCHES	34733493	14700
7/14/23	HARRISON	20335594	12000	7/28/23	NACOGDOCHES	34733494	14450
7/14/23	HARRISON	20335595	12000		SAN		
7/14/23	HARRISON	20335596	12000	7/28/23	AUGUSTINE	40530819	14400
7/17/23	NACOGDOCHES	34733478	14200		SAN		
7/17/23	NACOGDOCHES	34733479	14200	7/28/23	AUGUSTINE	40530821	14400
7/17/23	NACOGDOCHES	34733480	14200	7/31/23	PANOLA	36538883	12000
7/17/23	NACOGDOCHES	34733482	14300	7/31/23	PANOLA	36538884	12000
7/17/23	NACOGDOCHES	34733483	14300	7/31/23	PANOLA	36538885	12000
				7/31/23	HARRISON	20335608	9720
				7/31/23	HARRISON	20335609	9750

See Map and Louisiana Permits on previous pages.

Join our group on

LinkedIn

Keep in Touch
through the
Shreveport
Geological Society
LinkedIn Group.



LOUISIANA BOARD OF PROFESSIONAL GEOSCIENTISTS

Geoscientist Licensing in Louisiana

Did you know?

When you attend a monthly Shreveport Geological Society meeting, you earn one hour of continuing education credit for your LBOPG license. This is a simple and enjoyable way to get your hours! You can also find links to continuing education ethics credit courses at <https://sgs1.org/continuing-education/>.

Ready to track your CE hours?

Visit the LBOPG website today to download your continuing education log template lbopg.org/resources/continuing-education

A	B	C	D	E	F	G	H	I	J	K	L
1	Name:				PG License #:		Renewal Date:				
3	Date	Code*	Activity		Instructor	Sponsor Organization		Credits			
4			Title			Name	Location	Time	CEU	PDH	
5											
6											
7											
8											
9											
10											
11											
12											
13											
14											
15											
16											
17											
18											
19											
20											
21										Total PDH claimed this renewal period:	0
22										PDH carry over from previous year claimed for this report:	
23										Total PDH claimed to meet minimum requirements:	0
24										PDH to be carried over to next year's report:	
26	Audits will be conducted randomly and/or as needed to confirm CE activities each year.										
27	It is your responsibility to collect and maintain proof of attendance and completion of CE activities in case an audit is called.										
28	*Code		Conversion of =	PDH		Minimum hrs. to renew	Maximum hrs. Allowed/Period				
29	Participant Credit	P	Each Direct Hour =	1		14	Geoscience Credits	Society Meetings			12
30	Instructor Credit	I	CEU, Papers, etc.=	10		1	Ethics Credits	Self directed Coursework			5
31	Authorship Credit	A	College Qtr. Hr. =	10		15	Total	Authorship - Paper			10
32	Meeting Credit	M	Semester Hour =	15				Authorship - Book			45
33	Ethics Credit	E	Instructor =	3XPDH							
34											
35	This form was intended to be a one (1) letter size page, i.e. one (1) years record of CE activity or 15 PDH.										
36	It is recommended that additional data be entered into a second (or third, etc.) worksheet in this spread sheet workbook.										
37	An entire (blank) form can then be copied into the new worksheet and the sheet tab named as the report year.										
38	This workbook has two (2) new sheets included as examples so you can start the process of recording your CE activity.										
39											

SGS HONORARY MEMBERS

James D. Aimer*
William E. Bancroft*
Michael W. Beckman*
Orville Roger Berg
David L. Billingsley, Jr.
B. W. Blanpied*
Prentis L. Boatner, Jr.*
Alan L. Brittain
John Franks*
Victor P. Grage*
John C. Grunau*
J. Frank Harrell*
James B. Harris*
William E. Hayes*
Roy T. Hazzard*
Dr. Leo Hermann*
Kevin B. Hill
Charles J. Hoke*
Perry G. Holloway*
Walter E. Hopper*
E. B. Hutson*
L. Lee Kincade*
Joseph O. Laird*
Paul Todd Landes, Jr.*

W. W. Lincoln*
William R. Meaney
Clarence L. Moody*
John T. Palmer*
Thomas H. Philpott*
William M. Plaster*
Gene R. Robinson*
C. Lane Sartor*
Erwin W. Saye*
Fred R. Schroeder*
C. Ray Scurlock*
Walter H. Spears*
William C. Spooner*
George D. Thomas*
Arthur H. Trowbridge
Henry J. Tyler*
Claude N. Valerius*
Warren B. Weeks*
Percy J. Wheeler, Jr.
B. Ross White*
R. M. Wilson*

(* Deceased)