



Shreveport Geological Society **NEWSLETTER**

Volume 64, No. 1

September 2019

Most of the 2019-2020 Board



SGS1.ORG

Meet the Board p. 3
Sidewall Cores p. 13

*Message
from*



*the
President*

Greetings! Welcome to another SGS calendar year. I hope all of you have enjoyed your summer. It started out very wet but now the 100 degree plus days have hit, and I am begging for rain again. If you have any ideas or topics for upcoming lunch speakers please get in touch with the program director, Matthew Chumley, to discuss.

The current commodity prices seem to have slowed down the activity locally except for a handful of Haynesville players. I looked back to compare current oil and gas prices to 5 years ago, and we are about 50% less today. I still find it shocking that expensive horizontal wells are being drilled in this price environment other than to hold expiring leases. Here's to us all looking forward to a cold winter to get prices back up and ducks headed south!

The 26th Annual ALTAPL-SGS Golf tournament is coming soon and will be held at East Ridge C.C. Friday, September 6th. There will be morning and afternoon flights along with breakfast, lunch, and awards dinner that evening. This is always a well-attended event, and I encourage all to support by sponsoring, playing golf, or coming to the social at the end of the day.

*Golf Tournament
Sept. 6*

I look forward to seeing you at our upcoming meetings and social events.

Cody Lenert

Faithful Friends 2018-2019

Louise F. Pearce	Atkins, Ltd., L.L.C.
Scott Comegys	BER-EX-CO., Inc.
Alan Schlichtemier	Geological Drafting Consultants
Richard Swindell	Gerard Associates, L.C.
Scott Stroud	Grigsby Petroleum, Inc.
Joe White, Jr.	Hill Geophysical Consulting
Qiu Lu	Marlin Exploration, L.L.C.
Greg McCarty, P.G.	Toledo Mudlogging Services, Inc.
Daniel Buller	T.W. McGuire & Associates, Inc.
Carl E. Gray	Sugar Creek Producing Company, L.L.C.
Alan Brittain	JM Exploration Company, Inc.
Jon E. Saye	Palmer Petroleum, Inc.
William Downs	Oden & Associates, LLC
Johnnie Wanger	Spanoil Incorporated
David L. Billingsley, Jr.	Bivins Energy Corporation
Randy Hale	Stratagraph
Mary Barrett	R Lacy Services
David Williamson	Marston Oil Company, LLC
Cypress Operating, Inc.	Hardin International
Wild Oak Gas Co., Inc.	Johnson Energy Resources, LLC
Milestone Energy, L.L.C.	Lakewood Production, LLC
Sartor-Richardson, L.L.C.	Williamson Oil & Gas, Inc.
Milbird Resources, L.L.C.	

To be a Faithful Friend for 2019-2020, please contact Zach Gray.

Invest in the Future

You can **donate** to the SGS Scholarship Fund online at SGS1.org or by writing a check to the SGS with "Scholarship" in the memo line, and you may include an "in memory of" or "in honor of" note as well.

Mail to: Shreveport Geological Society,
P.O Box 750, Shreveport, LA 71162.

Meet The Board



President

Cody Lenert has worked for Marlin Exploration for thirteen years. He is honored to be on the board and helping in any capacity needed. Cody enjoys spending time with his wife and two boys. His favorite hobbies are duck hunting and fishing for redfish and speckled trout.



First Vice President

Zach Gray has 11 years of experience as a petroleum geologist, he has previously worked for Forest Oil in Denver and Chief Oil and Gas in Dallas and is currently working for Ensign IV Energy here in Shreveport. He is proud to serve on the SGS board and looks forward to the coming year.



Second Vice President

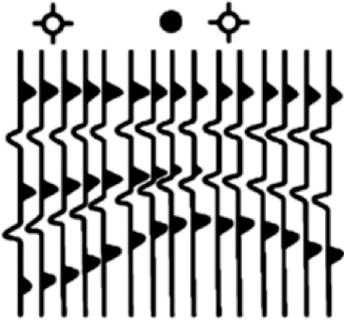
After graduating from Centenary in 2010, **Matthew Chumley** began his career with Nadel and Gussman as an exploration geologist working projects in North Louisiana, South Arkansas, East Texas and North Texas. He serves as the Second VP of the SGS and looks forward to organizing an exciting speakers program. He enjoys spending time with his wife and three young children and is an avid outdoorsman.



Secretary

Sarah Kaye Wilkes has worked as an Environmental Geologist since her graduation from Centenary College in May 2013. She recently made the switch from the private sector to the Louisiana Department of Environmental Quality where she focuses on soil and groundwater remediation. She enjoys traveling, spending time with family, and coaching lacrosse.

Hill Geophysical Consulting



Kevin B. Hill

*Integrating Geophysical Technology
with Geology*

**What's Under Your
Feet? Find out:
HILLGEO.COM**



415 TEXAS ST., SUITE 200
SHREVEPORT, LA 71101

318.221.3329
kevin@hillgeo.com



Camterra Resources

Main Office

2615 East End Blvd South
Marshall, TX, 75672
Telephone: (903) 938-9949
Fax: (903) 935-0521

Dallas Office

100 Crescent Court
Suite 1800
Dallas, TX, 75201
Telephone: (214) 310-0514

www.camterra.com

Chief Executive Officer:	Zach Carlile
President:	Paul Marchand
Exploration Manager:	Daniel Sevier
Director of Operations and Engineering:	Jim Larkin
Lan Manager/ General Counsel:	Allen C. Staggers, Jr.
Asst. General Counsel:	Pam Johnson
Sr. Landman:	Jason Derebery

Seeking Opportunities in Texas, Louisiana, Arkansas, Mississippi, and New Mexico

Meet The Board

(continued)



Treasurer

Morris P. Nichols has been employed at Stroud Exploration Company for 20 years. He has served previous terms on the boards of the Shreveport Geological Society, the Shreveport Map Association, as well as the Shreveport Petroleum Data Association. Morris's hobbies include Golf, Tennis, and Hunting.



Board Member

Ian Byram is a geologist at Heritage Energy Company and EGH Operating, LLC. This is his first year serving on the SGS Board and he is eager to learn and help SGS prosper. Ian graduated in geology and business from SMU and received his M.S. in geology from Baylor University. He enjoys hunting, snowboarding, and mountain biking.

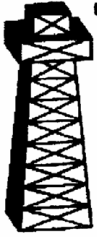


Board Member

Kevin McMaster has worked as a geologist in Shreveport for most of the past 35 years. Since 2015, he has been working as a consultant for numerous companies in Dallas and Shreveport. Prior to 2015, he worked for SM Energy in Shreveport and Tulsa for almost 14 years. He has previously served on the board and as an officer for the Shreveport Geological Society.

WHEN IT HAS
TO BE DONE
FAST!

400 TRAVIS ST.
SUITE 1606
S'PORT, LA
71101



COMPUTER
MAPPING FOR
THE OIL & GAS
INDUSTRY.
COLOR PLOTTING
AND DIGITIZING.

JOHN
HARRELL,
OWNER
ANDY
CARDIN,
DRAFTSMAN

PHONE

221-7780



skrivanos
engineering, inc.

Meet The Board

(continued)



Board Member

Stuart Oden started working as a geologist in 1978 for Sun Oil Company. He subsequently worked with Goodrich Oil Company for more than 20 years and currently manages Oden & Associates, LLC here in Shreveport. He and his wife, Kim, have 3 daughters and enjoy spending time at the farm with their 2 grandchildren.



Board Member

Jamey Walker recently retired from R. Lacy, Inc. in Longview, Texas after 28 years as a geologist and most recently V/P. and head of the Exploration Department. He formed Huntington Resources in June 2016, a geological consulting business. A 1978 graduate of LSU with a BS in Geology, he has almost 40 years of experience in the oil and gas industry. Having worked for several independents in Shreveport back in the 1980's, he has strong connections to the SGS. He looks forward to working with other Board members to strengthen the SGS and continue the tradition of providing education, fellowship, and support for fellow geologists.



Executive Assistant to the Board

Annie Green is a Geotech for Nadel and Gussman as well as SGS's Executive Assistant to the Board and Publication Committee Chairman. She also serves on the Christmas in Haughton Festival and National Night Out planning committees. In her free time, Annie enjoys outdoor adventures with her husband and three sons.



PALMER PETROLEUM, INC.

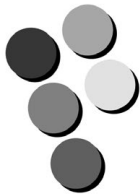
Exploration and Development • Operations • Oil and Gas Investments

330 Marshall Street, Suite 1200
Shreveport, Louisiana 71101

Phone: (318) 222-0517

www.palmerpetro.com

Fax: (318) 424-3256



Paragon

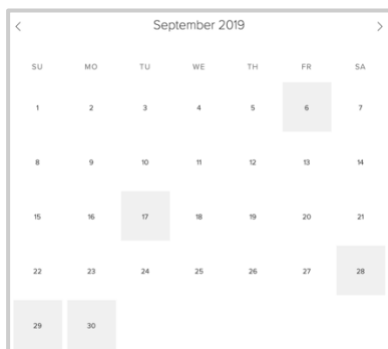
P R E S S

DESIGN PRINT MAIL

318-868-3351

www.ParagonPress.net

Calendar of Events



View this interactive calendar at SGS1.org

September 6

ALTAPL-SGS Golf Tournament

September 13

RSVP for the September Meeting

September 17

Monthly Meeting: Gustavo Carpio presents
Ingrain Services: Optimized Rotary Sidewall Core
" Selection and Analysis"

11:30 a.m. - 1 p.m.; Petroleum Club 15th Floor

September 28 – October 6

Mock Dig at the Red River Revel. Volunteers needed.

On the Cover and "Meet the Board": Board members photographed by Brenda Pender. Got a picture you want to see on the cover? Email it to the editor today! Seriously, don't make me pull stock photos like last year.

Interior Art: Page 1 "Transparent Primaries" (*detail*) by Gwen Norsworthy. Courtesy of the Norsworthy Gallery, 214 Texas St., Shreveport, LA 71101, online at TheNorsworthy.com.
Page 11 "The Cradle" (*detail*) by Berthe Morisot.

Contact the Newsletter Editor: 1RacheIMcNerney@gmail.com



MILESTONE ENERGY, LLC

Oil & Gas Exploration and Development

Joseph A. Lott

Geologist / Managing Partner

Zach Kelly
Geologist

Zach McDonald
Geologist

Thomas A. Giles
Land Manager

333 Texas Street, Suite 516
Shreveport, Louisiana 71101
jlott100@bellsouth.net

Office: 318.212.0470
Fax: 318.212.0469

- Looking for Prospects
- Geophysical Consultant
- Landmark Graphics Corp. Software
- Synthetic Seismograms, modeling and cross sections



- Digitizing capability
- 2-D & 3-D Seismic Acquisition, Processing & Interpretation
- SeisVision 2-D & 3-D interpretation and mapping software

Bobbie Ben Taylor - President

O: 120 S Broadway, Suite 102
Tyler, Texas 75702
Mobile: (903) 521-3182

H: 7130 Holly Square Court
Tyler, Texas 75703
Email: taylor@webfoxmail.com

LOOKING FOR PROSPECTS

Let me tailor your geophysical needs.

HALLIBURTON

Do you require an integrated approach to total well construction, formation evaluation, and optimized production? Make the jump to our team. We have the best local people for designing your well, performing state of the art formation evaluation, and planning and executing your completion.

**Logging & Perforating
Production Enhancement (Stimulation)**

**Cementing
Security Bits
Tools, Packers, & TCP
Coli Tubing Services**

**Shreveport Sales 318-673-4400
Tyler sales 903-581-5263
Kilgore Operations 1-800-654-6926**



www.lmkr.com



Jeremy Stuhr

Account Executive

jsuhr@lmkr.com
P : +1 281 848 3319
C : +1 346 313 5377
F : +1 281 879 0135



LMK Resources Inc.
6051 North Course Drive Suite 300
Houston, TX. 77072 USA

The September Meeting

Make your

RESERVATION

Gustavo Carpio

presents

“Ingrain Services: Optimized Rotary Sidewall Core Selection and Analysis”

11:30 a.m. Tuesday, September 17

The Petroleum Club of Shreveport, 15th floor

Cost: \$20, Children 10 and under \$8

We encourage members to invite guests, spouses, and friends to any of our meetings.

If you'd like a seat, kindly **RSVP**
by **Friday, September 13** at SGS1.org,
or email or call in your reservation to

Matthew Chumley

mchumley@naguss.com

318-222-0908

Name: _____

I will bring ___ guest(s): _____



 **Jerry W. Taylor**
Consulting Geologist, LLC

17377 LAUREN DRIVE
PRAIRIEVILLE, LA 70769

1-(225)-287-8342

JWTGEOLOGY@GMAIL.COM

WWW.JWTGEOLOGY.COM

**R. LACY /
CRAIN ENERGY**
*Oil and Gas Investments
Exploration and Development*

222 EAST TYLER STREET
LONGVIEW, TX 75601
903-758-8276 (O)

Chris Bresch
V.P. Exploration
cbresch@rlacy.com

Hunter Brumble
Staff Geoscientist
hbrumble@rlacy.com

Scott Caswell
Sr. Geophysicist/Geoscientist
scaswell@rlacy.com


Exploration Company LLC

Address: 5395 Pearl Prkwy, Ste. 200
Boulder, CO 80301
Telephone: (303) 541-1559
Fax: (303) 443-1551

&

Address: 401 Edwards St., Ste. 1601
Shreveport, LA 71101
Telephone: (318) 227-8668
Fax: (318) 227-9012

Operating in the MAFla, ArkLaTex,
and WY

**MUSLOW
OIL & GAS, INC.**

330 Marshall Street
Suite 628
Shreveport, LA 71101

Eric Weiss
President

(318) 221-8694
Fax: (318) 227-2106

Gustavo Carpio



Gustavo Carpio is a Senior Technical Advisor for Ingrain, a Halliburton Service. For the past 11 years he has contributed to Ingrain’s technological and commercial development, coauthoring several patented methods for the characterization of tight reservoir rocks and participating in the evaluation of unconventional resource plays in North and South America. Presently, he is focused on the integration of Digital Rock Analysis, Core, and Wireline data.

Mr. Carpio holds a B.S. in Geology from the University of Houston and is a member of the AAPG, HGS, and SPE.

Abstract

“Ingrain Services: Optimized Rotary Sidewall Core Selection and Analysis”

Sidewall coring provides geologists, petrophysicists, and reservoir engineers with a cost-effective way of increasing formation knowledge through the retrieval and direct analysis of reservoir rock. However, without careful selection, this form of discontinuous sampling can lead to misrepresentation of subsurface properties. For this reason, sidewall core selection from wireline logs and core screening become crucial steps in formation evaluation.

We present a workflow that addresses the challenges of distribution and representativeness of rotary sidewall cores. The workflow begins with a data-driven analysis of wireline logs to and capture variations in an interval of interest, identify electrofacies, and optimize sample distribution.

The workflow continues beyond core extraction with Dual Energy CT – a rapid, non-destructive core logging and imaging method that captures the degree of fine-scale heterogeneity in each core. The workflow provides valuable insight in a rapid timeframe and delivers data that can be used to better design subsequent digital and physical core analysis programs.

Kingwood Exploration, LLC
Oil & Gas Exploration
and Production



Kurt M. Ley

Exploration Manager & Partner

Robert E. Braswell

Engineering/Operations Manager & Partner

416 Travis St., Suite 1100
Shreveport, LA 71101

Phone: 318-946-8585

Fax: 318-946-8287

kurt.ley@kingwoodexploration.com
robert.braswell@kingwoodexploration.com



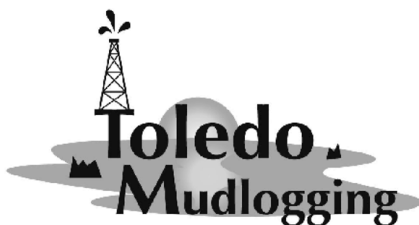
Established by G.M. Anderson

333 TEXAS ST., SUITE 2020

SHREVEPORT, LA 71101-5357

Phone: (318) 227-2000

Fax: (318) 425-5935



★ Milam, TX

★ Many, LA

The Horizontal Specialists!!

We work with the greatest companies
in the world, please give us a call
to see what we can do for you!!

Joe Eidson 318-623-5077

Michael Danos 318-332-7673

P. O. Box 1209, Many, LA 71449

Security Exploration, Inc.

8509 Line Avenue
Shreveport, LA 71106



J. Stafford Comegys
President

Donna Walker
Geologist

Barbara Lyles
Office Manager

OIL & GAS EXPLORATION

Tel: (318) 222-1066

Fax: (318) 222-4932

Science Fair 2019

Report from Larry Frizzell, Youth Activities Committee Chairman

The 2018 Louisiana Region 1 Science & Engineering Fair judging was on March 8th at the Bossier Civic Center. Volunteers from the SGS judged earth science-related projects and awarded cash prizes to the 1st (\$125), 2nd (\$100), & 3rd (\$75) place winners in each of the three divisions - Elementary, Middle School, & High School.

These students were invited to our May meeting, with their projects, where they were recognized by the society and available after the meeting to discuss their projects.

Many thanks to our volunteer judges: Bob Sharp, David Williamson, Roger Berg, Ralph Richardson, Greg Zerrahn, and Patrick Johnson.

The winners of the SGS Awards are:

2019 SGS Science Fair Winners					
DIV	Place	NAME	TITLE	GRADE	SCHOOL
Elem	1	Jai Koticha	Crazy Crystals	5	Fairfield Elem.
Elem	2	Avery Adams	Where's The Dirt?	5	Riverside Elem.
Elem	3	Leonardo Branton	Erosion Notion	5	Richardson Elem.
MS	1	Aubriana Edmunds	Earthquakes	6	Benton Middle
MS	2	Zach Cryer	Can Nanotechnology Help Clean Up Ocean Oil Spills?	7	Benton Middle
MS	3	Davin Murff	Rocking Rock Candy	6	St. John Berchmans
HS	1	Pranshu Khanna	Effect of Sawdust vs Chitsan Powder in the Removal of Congo Red Dye from Water	10	Caddo Magnet High
HS	2	Ashini Modi	A Search for Extrasolar Planets in High Metallicity Open Clusters Using a Large Scale Photometric Algorithm	9	Caddo Magnet High
HS	3	David Yu	Immobilization of Lipase on Magnetic Fe ₃ O ₄ Nanoparticles for Biodiesel Production	10	Caddo Magnet High

THE PETROLEUM CLUB OF SHREVEPORT

Serving delectable cuisine to the
Shreveport Geological Society
regular luncheon meetings.

318-425-4251



**David Meadows
Manager**

Mid South Tower Bldg.
416 Travis Street, Suite 1414
Shreveport, LA 71101

Phone: 318-425-7617
Fax: 318-425-1385
Email: jmexploration@comcast.net

BRAMMER ENGINEERING, INC.

Services:

- **Drilling**
- **Completion**
- **Construction**
- **Production**
- **HSE**
- **Regulatory**
- **Land**
- **Accounting**
- **Risk Management**
- **Information Systems**



www.brammer.com
318.429.2345 o • 318.429.2340 f
400 Texas Street • Suite 600 • Shreveport, LA 71101

WLS CORPORATION

**OIL & GAS
EXPLORATION & PRODUCTION**

**Wayne L. Simpson
President**

**Philip Davis
Geologist**

416 Travis Street, Suite 1006
Shreveport, Louisiana 71101

Office: (318) 425-2978
Fax: (318) 425-3166

Photos from the May Meeting

by Brenda Pender

Dale Short presented “Tectonics of the Sabine Island.” Science Fair winners (see previous page) and their parents were welcomed and talked to members about their projects. Also in attendance were Tripp Wilkerson and John Rives Wooden of Eden Gardens Magnet School, who won 2nd place at the regional Social Studies Fair in the Elementary Division for their project “Discovering Oil in Louisiana.”



Baldwin Madden Energy, LLC

*Oil and Gas Property
Acquisitions and Development*

George A. Baldwin, Jr.

Gregory K. Madden

Christopher D. Franks
Senior Geologist

Lonnie J. Shaw
Director of Accounting & Finance

(318) 429-2220

(318) 429-2229 Fax

333 Texas Street, Suite 1919
Shreveport, LA 71101-3676

Reynolds Drilling Company, Inc.

7591 Fern Ave., Suite 2001
Shreveport, Louisiana 71105-5502

Phone: (318) 227-0118

Fax: (318) 227-0171

reydrill@bellsouth.net

Terry Pat Reynolds
President

STROUD PRODUCTION, LLC

333 Texas Street, Suite 860

Shreveport, Louisiana 71101-5302

Voice: (318) 429-2260

Fax: (318) 429 2255

Email: ras@spllc.com



SPANOIL INCORPORATED

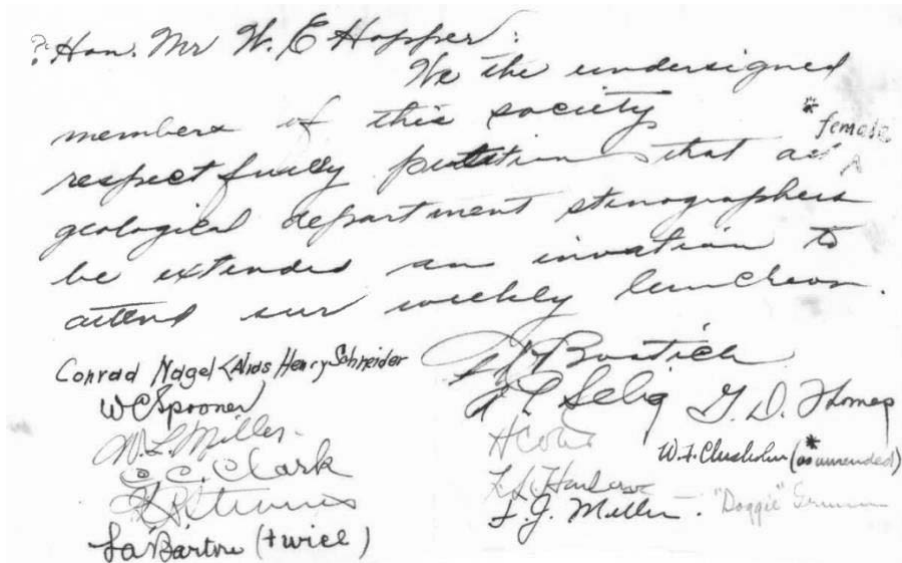
416 TRAVIS ST., SUITE 806
SHREVEPORT, LA 71101
VOICE: (318) 221-2371
FAX: (318) 221-2372
anthony@spanoil.com

ANTHONY J. SPANO
PRESIDENT

From the Archives

By Annie Green

As recorded in the 1924-1925 SGS President's Book



Hon. Mr. W. E. Hopper:

We the undersigned members of this society respectfully petition that all *female geological department stenographers be extended an invitation to attend our weekly luncheon.

Conrad Nagel <Aids Henry Schneider	F. X. Bostick	
W. C. Spooner	A. L. Selig	G. D. Thomas
[M.L.?] Miller	[--]	
C. C. Clark	W. F. Chisholm (*as amended)	
G. R. Stevens	L. S. Harlowe "Doggie" [-----]	
La Barton (twice)	F. J. Miller	

Got a question or idea for "From the Archives"?
Email Annie Green at agreen@naguss.com.



Shreveport Petroleum Data Assn., Inc.

333 Texas Street, Suite 900

Shreveport, LA 71101

(318) 429-2237

Fax (318) 429-2441

Website : www.spdalog.org

spda@spdalog.org

Cindy Shepherd

Manager



Bobby E. Jelks
President

Faith N. Gilbert
CFO

P. O. Box 7665
Shreveport, LA 71135-7665

Phone: (318) 221-2688

Fax: (318) 459-2935

Edward Yarborough
Exploration Manager

James Light
Land Manager



GEOVENTURES™

Ashley Garcia

Assistant Program Manager

Main +1 713 789 7250

Direct +1 281 781 1005

Fax +1 713 789 7201

Mobile +1 281 239 4576

ashley.garcia@iongeo.com

2105 City West Blvd., Ste. 900

Houston, TX 77042-2837 USA iongeo.com



L. CHRIS JOHNSON
Manager

2650 Fairfield Ave
Shreveport, LA 71104
BUS:(318) 222-6652
FAX: (318) 222-6673
cjohnson@jerlic.com

GRIGSBY PETROLEUM, INC.

**Oil & Gas Exploration
and Production**

333 Texas St., Suite 2285

Shreveport, LA 71101

Phone (318) 425-5306

Fax (318) 425-3733

Office Phone
(318) 222-7123

Residence Phone
(318) 925-2348

David L. Billingsley, Jr.
Certified Petroleum Geologist

400 Travis Street, Suite 1230
Shreveport, LA 71101
DLBJR1@aol.com

Cell Phone
(318) 426-4320



OIL AND GAS

DIANA L. CHANCE
MANAGING DIRECTOR

P. O. Box 1346 SHREVEPORT, LA 71164

(318) 227-2131 • FAX: (318) 222-5832

CELL: (318) 347-8848

WWW.DONNERPROPERTIES.COM

Mock Dig

September 28 – October 6

Sign up now to **play** in the dirt
and *inspire* future geologists
at this year's Red River Revel!



Co-chair and other volunteers are needed.

Please contact Carrie Salinas:
csalinas@virtusenvironmental.com

Join our group on

LinkedIn

Keep in Touch
through the Shreveport Geological
Society LinkedIn Group.



The rock kit is ready
(*pictured left*).
E-mail Maps in Schools Chairman
Matthew Chumley at
mchumley@naguss.com
to give a talk with the kit and
present a geologic map to a class
of future geoscientists.



**WILL-DRILL
RESOURCES
INCORPORATED**

**PHONE (318) 222-7464
FAX (318) 222-7466**

**416 TRAVIS, SUITE 1200
SHREVEPORT, LA 71101
OIL AND GAS EXPLORATION**

Cypress Operating, Inc.



**STEVEN A. SINGLETARY
BEN ROBINSON**
Petroleum Geologists

Office: (318) 424-2031
Fax: (318) 425-8140

330 Marshall Street, Suite 930
Shreveport, LA 71101



EXPLORATION, L.L.C.

401 Edwards Street, Suite 1200
Shreveport, LA 71101

P.O. Box 1367
Shreveport, LA 71164

office: (318) 222-8406
fax: (318) 222-6061
email: mei@marlinexploration.com

Jon Q=Petersen
President

S. Cody Lenert
Geologist

Autie T. Orjias
V.P./Land Manager

Ryan Q=Petersen
Land

Dean Giles
Secretary/Treasurer



Seismic Exchange, Inc.

Strategic Speculative Surveys
Geophysical Data Marketing & Management

Your
Full Service
National
Seismic Data
Marketing Firm

Marketing contact:
Layne Williams
lwilliams@seismicexchange.com

DALLAS DENVER HOUSTON NEW ORLEANS TULSA

201 St Charles Ave., Suite 4300
New Orleans, LA 70170
(D) 504-510-2508 (C) 504-458-3056

www.seismicexchange.com



LOUISIANA BOARD OF PROFESSIONAL GEOSCIENTISTS

Geoscientist Licensing in Louisiana

Did you know?

When you attend a monthly Shreveport Geological Society meeting, you earn one hour of continuing education credit for your LBOPG license. This is a simple and enjoyable way to get your hours! You can also find links to continuing education ethics credit courses at <https://sgs1.org/continuing-education/>.

Ready to track your CE hours?

Visit the LBOPG website today to download your continuing education log template
lbopg.org/resources/continuing-education

	A	B	C	D	E	F	G	H	I	J	K	L	
1	Name:					PG License #:		Renewal Date:					
3	Date	Activity				Sponsor Organization			Credits				
4		Code*	Title	Instructor		Name	Location		Time	CEU	PDH		
5													
6													
7													
8													
9													
10													
11													
12													
13													
14													
15													
16													
17													
18													
19													
20													
21									Total PDH claimed this renewal period:			0	
22									PDH carry over from previous year claimed for this report:			0	
23									Total PDH claimed to meet minimum requirements:			0	
24									PDH to be carried over to next year's report:				
26	Audits will be conducted randomly and/or as needed to confirm CE activities each year.												
27	It is your responsibility to collect and maintain proof of attendance and completion of CE activities in case an audit is called.												
28	*Code			Conversion of =	PDH			Minimum hrs. to renew	Maximum hrs. Allowed/Period				
29	Participant Credit	P		Each Direct Hour =	1			14	Geoscience Credits	Society Meetings			12
30	Instructor Credit	I		CEU, Papers, etc.=	10			1	Ethics Credits	Self directed Coursework			5
31	Authorship Credit	A		College Qtr. Hr. =	10			15	Total	Authorship - Paper			10
32	Meeting Credit	M		Semester Hour =	15					Authorship - Book			45
33	Ethics Credit	E		Instructor =	3XPDH								
35	This form was intended to be a one (1) letter size page, i.e. one (1) years record of CE activity or 15 PDH.												
36	It is recommended that additional data be entered into a second (or third, etc.) worksheet in this spread sheet workbook.												
37	An entire (blank) form can then be copied into the new worksheet and the sheet tab named as the report year.												
38	This workbook has two (2) new sheets included as examples so you can start the process of recording your CE activity.												

BER-EX-CO., INC.

Orville Roger Berg, Ph.D.

Exploration, Exploitation
Seismic Evaluation
Domestic, International

400 Travis St., Suite 1612
Shreveport, LA 71101-3108
(318) 220-0300
orberg@bellsouth.net

9949 Beaver Creek Drive
Shreveport, LA 71106
(318) 798-1748

GERARD ASSOCIATES, L.C.

OIL & GAS EXPLORATION
DEVELOPMENT AND ACQUISITIONS

J. A. Wojtkiewicz • Charles Gerard

625 Market St., Suite 250
Shreveport, LA 71101
Tel. (318) 221-0761 • FAX (318) 221-8835

ODEN & ASSOCIATES, LLC

Oil and Gas Exploration
Phone: 318-222-2400
Fax: 318-226-0840



ALAN SCHLICHTEMIER
Geologist

P.O. Box 1806
Shreveport, LA 71166

416 Travis Street, Ste. 400
Shreveport, LA 71101
odenassoc@bellsouth.net



**Kalmbach
Production Company, LLC**

Sam Kalmbach
Geologist

400 Travis Street, Ste. 516 office: (318) 424-6566
Shreveport, LA 71101 cell (318) 470-9977
e-mail: sam.geo.kpc@gmail.com

BARROW-SHAVER RESOURCES COMPANY

Oil & Gas Exploration & Development

Scott Owen Shaver
Managing Partner and Exploration Manager

903-593-5221 Office
903-593-1692 Fax
903-561-4711 Home
903-582-4711 Farm
903-245-4999 Mobile

977 Pruitt Place
Tyler, Texas 75703
sos-bsr@tyler.net



Drilling Contractor
Oil & Gas Operator
Turnkey Services
Well Service & Workover
Working Interest Participant

318-992-4111
P. O. Box 2990, Jena, LA 71342
justissoil.com

TIM H. MARSHALL DIRCK E. WUELLNER

MARSHALL-WUELLNER, INC.
Petroleum Geologists

AmSouth Tower
333 Texas St., Suite 608
Shreveport, LA 71101-3671
Office: (318) 429-2250
Fax: (318) 429-2251

Mike Rogers Drilling Co., Inc.

Drilling & Interest Participation

MIKE ROGERS, PRESIDENT
CRAIG ROGERS, VICE PRESIDENT

Office: 870-234-2356 • Fax: 870-234-7487

1708 N. Vine Street • P. O. Box 126 • Magnolia, AR 71754
email: mrdc1981@gmail.com

Monthly Permits – July 2019

Provided by ABCD GIS Mapping

Texas Permits

AppDate	API	Operator	County	Purpose	TD
7/1/19	36538498	ROCKCLIFF ENERGY OPERATING LLC (722890)	PANOLA	New Drill	12000
7/1/19	36538499	ROCKCLIFF ENERGY OPERATING LLC (722890)	PANOLA	New Drill	12000
7/1/19	36538500	ROCKCLIFF ENERGY OPERATING LLC (722890)	PANOLA	New Drill	12000
7/1/19	40135439	KJ ENERGY, LLC (469901)	RUSK	New Drill	10427
7/1/19	20335373	COVEY PARK RESOURCES LLC (182848)	HARRISON	New Drill	11300
7/1/19	40530704	BP AMERICA PRODUCTION COMPANY (040798)	SAN AUGUSTINE	New Drill	19500
7/1/19	36538438	COVEY PARK RESOURCES LLC (182848)	PANOLA	New Drill	10594
7/2/19	40135426	KJ ENERGY, LLC (469901)	RUSK	New Drill	10278
7/5/19	00530454	DEEP SEA, LLC (209644)	ANGELINA	New Drill	9350
7/8/19	40135440	PETRO-CHEM OPERATING COMPANY,INC (660001)	RUSK	New Drill	7100
7/8/19	36537366	CCI EAST TEXAS UPSTREAM LLC (120023)	PANOLA	Recompletion	9485
7/8/19	18331323	DALLAS PRODUCTION, INC. (197690)	GREGG	Recompletion	9005
7/11/19	36538490	ROCKCLIFF ENERGY OPERATING LLC (722890)	PANOLA	New Drill	12000
7/11/19	36538491	ROCKCLIFF ENERGY OPERATING LLC (722890)	PANOLA	New Drill	12000
7/11/19	00530454	DEEP SEA, LLC (209644)	ANGELINA	New Drill	10100
7/15/19	36538504	CCI EAST TEXAS UPSTREAM LLC (120023)	PANOLA	New Drill	11800
7/15/19	36538412	CHEVRON U. S. A. INC. (148113)	PANOLA	New Drill	9600
7/15/19	36538428	HOPEWELL OPERATING, INC. (399624)	PANOLA	New Drill	2400
7/16/19	41931792	XTO ENERGY INC. (945936)	SHELBY	New Drill	13000
7/16/19	34733404	BP AMERICA PRODUCTION COMPANY (040798)	NACOGDOCHES	New Drill	19500
7/17/19	40530713	XTO ENERGY INC. (945936)	SAN AUGUSTINE	New Drill	21500
7/18/19	34733405	BP AMERICA PRODUCTION COMPANY (040798)	NACOGDOCHES	New Drill	19500
7/19/19	41930638	SHERIDAN PRODUCTION COMPANY, LLC (775854)	SHELBY	Recompletion	10560
7/22/19	36535289	DANMARK ENERGY SERVICES, INC. (199614)	PANOLA	Recompletion	10575
7/23/19	20335374	COMSTOCK OIL & GAS, LP (170040)	HARRISON	New Drill	13000
7/23/19	20335375	COMSTOCK OIL & GAS, LP (170040)	HARRISON	New Drill	13000
7/24/19	36533610	TANOS EXPLORATION II, LLC (835976)	PANOLA	Recompletion	9575
7/25/19	06730825	STETSON PETROLEUM CORP. (819479)	CASS	New Drill	10700
7/25/19	36538507	ROCKCLIFF ENERGY OPERATING LLC (722890)	PANOLA	New Drill	15000
7/26/19	36532193	R. LACY SERVICES, LTD. (687208)	PANOLA	Recompletion	9830
7/26/19	00530455	COBRA OIL & GAS CORPORATION (163000)	ANGELINA	New Drill	17500
7/26/19	36538506	ROCKCLIFF ENERGY OPERATING LLC (722890)	PANOLA	New Drill	15000
7/29/19	20335376	COMSTOCK OIL & GAS, LP (170040)	HARRISON	New Drill	13000
7/29/19	20335377	TANOS EXPLORATION II, LLC (835976)	HARRISON	New Drill	11106
7/30/19	06730824	BROOKS PETROLEUM COMPANY (097323)	CASS	New Drill	12500
7/30/19	34733381	AETHON ENERGY OPERATING LLC (008555)	NACOGDOCHES	Recompletion	13500
7/30/19	20335378	TANOS EXPLORATION II, LLC (835976)	HARRISON	New Drill	11096
7/30/19	20335379	TANOS EXPLORATION II, LLC (835976)	HARRISON	New Drill	11083
7/31/19	36538503	ROCKCLIFF ENERGY OPERATING LLC (722890)	PANOLA	New Drill	11000

See map and Louisiana Permits on following pages.



JON E. SAYE

PETROLEUM GEOLOGIST

Office: 318-221-4504
Fax: 318-221-4516
Cell: 318-458-1515

1015 Mid South Twr. • P. O. Box 137
Shreveport, LA 71161
jsaye@prodigy.net

COUTRET & ASSOC., INC.

Petroleum Reservoir Engineers
Property Evaluation, Reservoir Engineering
Fluid Injection, Property Management

Louisiana Tower
401 Edwards Street
Shreveport, LA 71101

Telephone: (318) 221-0482
Fax: (318) 221-3202
E-mail: rmcgowen@coutret.com



GEOVENTURES™

Alvin Rowbatham
Sales Manager

Main +1 713 789 7250
Direct +1 281 781 1005
Fax +1 713 789 7201
Mobile +1 832 372 2366
alvin.rowbatham@iongeo.com

2105 City West Blvd., Ste. 900
Houston, TX 77042-2837 USA iongeo.com



Delta-T
Geophysical
Consulting, Inc.

Comprehensive Geophysical Services

- Kingdom Suite 2d/3d pak
- Geographix
- GMA
- Neuralog
- Mesa 3-D Design
- Digirule

Woodie Huffman, CEO

401 Edwards Street, Suite 826
Shreveport, LA 71101-5510

Phone: (318) 221-0414

Fax: (318) 425-0688

Email: delta@bellsouth.net

Williamson

OIL & GAS, INC.

Oil & Gas Development



Office: (318) 221-2923 400 Travis Street
Fax: (318) 221-3488 Suite 1410
Email: bob@williamsonogi.com Shreveport, LA 71101

Joe R. White, Jr.
Petroleum Geologist

8505 Dogwood Trail
Houghton, LA 71037

Cell. 318-423-9828

Hm. 318-949-3539

Available for Consulting

AAPG CPG #5580

MS RPG #0097

LA CPG #345

Jwhite1362@aol.com

Joerjrw@gmail.com

Cowgill & Associates, L.L.C.

Oil & Gas Exploration & Production

Stephen C. Cowgill
Geologist/Managing Partner

P. O. Box 72180
Bossier City, LA 71172-2180
cwgill@suddenlink.net

Office: 318.429.2170
Fax: 318.429.1170
Cell: 318.455.9516

CSC ENERGY CORP.

OIL & GAS EXPLORATION

Joel B. Chevalier
PRESIDENT

416 Travis Street
Suite 507
Shreveport, LA 71101

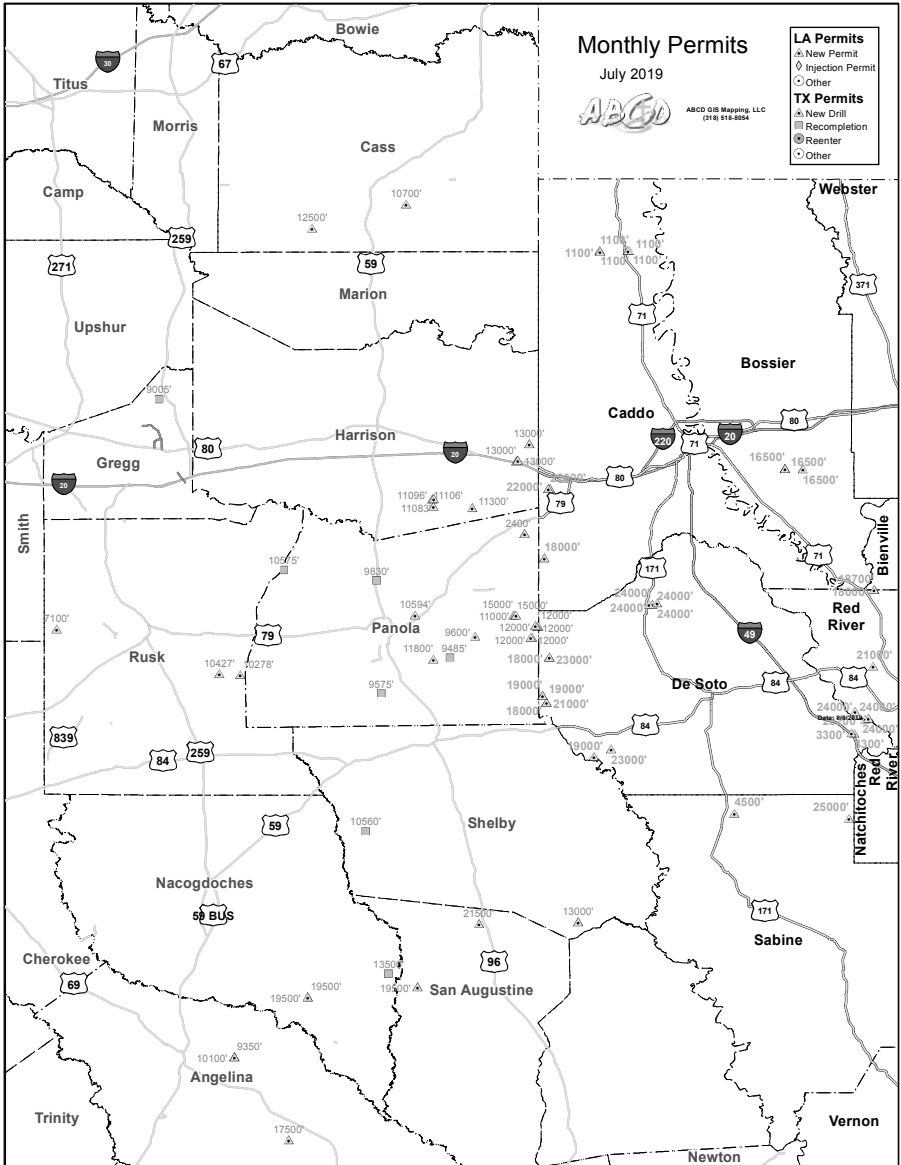
Mobile: (318) 469-5625

cscenergy@bellsouth.net

Monthly Permits – July 2019

Provided by ABCD GIS Mapping

Map



See Louisiana Permits listed on following page.



Craig C. Barclay
Petroleum Geologist, L.L.C.

522 Dumbarton Shreveport, LA 71106
Phone: (318) 869-2223
Mobile: (318) 426-2536
cbarclay1@comcast.net



Weatherford

Richard 'Dick' Swindell
Technical Sales Advisor
Wireline & Borehole Seismic

Wireline Services
Weatherford International, Ltd.
1101 ESE Loop, 323, Ste. 200
Tyler, Texas 75701, USA

Direct: +1.903.594.4926
Main: +1.903.534.5243
Fax: +1.903.939.8907
Mobile: +1.903.530.4016
richard.swindell@weatherford.com
www.weatherford.com

T. W. McGuire & Associates, Inc.

Registered Petroleum Engineers

416 Travis St., Suite 1400
P. O. Box 1763
Shreveport, LA 71166
(318) 222-0761
(318) 222-0799 Fax

James T. Maranto Robert T. Maranto

**BAKER
HUGHES**
a GE company



Jim Hankla
Sales
Southern US

M +1 903 312 8500
james.hankla@bhge.com



416 TRAVIS STREET ♦ SUITE 600
SHREVEPORT, LA 71101
PHONE ♦ (318) 425-0101
FAX ♦ (318) 425-2211

MORRIS NICHOLS
GARY ABRAMS
JOHN STROUD
GEOLOGISTS



Joseph H. McDuff
Geologist

351 Chapel Loop
Mandeville, LA 70471
985.845.9430
jmcduff@bellsouth.net

Monthly Permits – July 2019

Provided by ABCD GIS Mapping

Louisiana Permits

County	Status	WellSN	WellName	PermitDate	Depth	Organization
BIENVILLE	1	251846	HA RA SU61;CHK 33-28-21 HC	7/18/19	24000	AETHON ENERGY OPERATING LLC
BIENVILLE	1	251847	HA RA SU61;CHK 33-28-21 HC	7/18/19	24000	AETHON ENERGY OPERATING LLC
BIENVILLE	1	251848	HA RA SU61;CHK 33-28-21 HC	7/18/19	24000	AETHON ENERGY OPERATING LLC
BIENVILLE	1	251855	CV RB SU71;CPG 33-15-10 H	7/19/19	18700	COVEY PARK GAS LLC
BIENVILLE	1	251856	CV RB SU71;CPG 33-15-10 H	7/19/19	18000	COVEY PARK GAS LLC
BOSSIER	1	251852	HA RA SU54;TREAT-FEDERAL 10 H	7/19/19	16500	AETHON ENERGY OPERATING LLC
BOSSIER	1	251853	HA RA SU55;TREAT-FEDERAL 11 H	7/19/19	16500	AETHON ENERGY OPERATING LLC
BOSSIER	1	251854	HA RA SU56;ROY-FEDERAL 12 H	7/19/19	16500	AETHON ENERGY OPERATING LLC
CADDO	1	251825	HA RA SU108;SCOTT 29-20 HC	7/2/19	22000	COMSTOCK OIL & GAS--LA, LLC
CADDO	1	251826	HA RA SU108;SCOTT 29-20 HC	7/2/19	22000	COMSTOCK OIL & GAS--LA, LLC
CADDO	1	251850	ANKERSON	7/19/19	1100	EGH OPERATING, LLC
CADDO	1	251851	ANKERSON	7/19/19	1100	EGH OPERATING, LLC
CADDO	1	251871	KENDRICK-HOSS	7/30/19	1100	BAYOU STATE OIL CORPORATION
CADDO	1	251872	HOSS	7/30/19	1100	BAYOU STATE OIL CORPORATION
CADDO	1	251873	HOSS	7/30/19	1100	BAYOU STATE OIL CORPORATION
DE SOTO	1	251818	HA RA SUN;BEN H LAND 8-5 HC	7/1/19	24000	GEP HAYNESVILLE, LLC
DE SOTO	1	251819	HA RA SUN;BEN H LAND 8-5 HC	7/1/19	24000	GEP HAYNESVILLE, LLC
DE SOTO	1	251820	HA RA SUN;BURFORD LAND 8-5 HC	7/1/19	24000	GEP HAYNESVILLE, LLC
DE SOTO	1	251821	HA RA SUN;LAND & KNOWLES 8-5HC	7/1/19	24000	GEP HAYNESVILLE, LLC
DE SOTO	1	251829	HA RA SUH;MATTHEWS 17-8 HC	7/10/19	18000	COMSTOCK OIL & GAS--LA, LLC
DE SOTO	1	251830	HA RA SUH;MATTHEWS 17-8 HC	7/10/19	18000	COMSTOCK OIL & GAS--LA, LLC
DE SOTO	1	251831	HA RA SUH;MATTHEWS 17-8 HC	7/10/19	21000	COMSTOCK OIL & GAS--LA, LLC
DE SOTO	1	251836	RRBB LITTON RA SU;LITTON	7/15/19	3300	PERRY POINT, INC.
DE SOTO	1	251837	RRBB LITTON RA SU;RUFFIN	7/15/19	3300	PERRY POINT, INC.
DE SOTO	1	251842	HA RA SUC;SHIREY A 21 HZ	7/15/19	18000	COMSTOCK OIL & GAS--LA, LLC
DE SOTO	1	251843	HA RA SUQ;SHIREY A 17-8 HC	7/15/19	23000	COMSTOCK OIL & GAS--LA, LLC
DE SOTO	1	251857	HA RA SUH;JAMES PACE 17-8-5 HC	7/22/19	19000	COMSTOCK OIL & GAS--LA, LLC
DE SOTO	1	251858	HA RA SUH;JAMES PACE 18-7-6 HC	7/22/19	19000	COMSTOCK OIL & GAS--LA, LLC
DE SOTO	1	251859	HA RA SUX;OBERWORTMANN 19 H	7/24/19	19000	BRIX OPERATING LLC
DE SOTO	1	251867	HA RA SUEE;LJ WHITTEN 16-9HC	7/30/19	23000	BRIX OPERATING LLC
RED RIVER	1	251835	CLOYCE CLARK 30 H	7/11/19	24000	VINE OIL & GAS LP
RED RIVER	1	251838	HA RB SUII;YVES LELONG 32-5 HC	7/15/19	23200	VINE OIL & GAS LP
RED RIVER	1	251839	HA RB SUII;ALLBRITTON 32-5 HC	7/15/19	24000	VINE OIL & GAS LP
RED RIVER	1	251840	HA RB SUII;ALLBRITTON 32-5 HC	7/15/19	24000	VINE OIL & GAS LP
RED RIVER	1	251841	HA RA SUDD;DUPREE LAND 28 H	7/15/19	21000	BRIX OPERATING LLC
SABINE	1	251828	HA RA SUO;TRISTAR 1&12-9-11 HC	7/3/19	25000	INDIGO MINERALS LLC
SABINE	1	251870	NABORS-LOGAN	7/30/19	4500	NABORS-JOHNSON PROD CO., INC.
WEBSTER	1	251869	PATTERSON	7/30/19	2900	MID-SOUTH TRADING, INC.

See Map and Texas Permits listed on previous pages.

CAPLIS FORESTRY, LLC

JEFFREY W. CAPLIS

-CONSULTING FORESTER-

CELL: 318-617-9016

OFFICE: 318-752-3662

586 CAPLIS SLIGO RD.

BOSSIER CITY, LA 71112

-complete forestry services-

- Timber Appraisals • Timber Management • Timber Cruising •
- Damage Appraisals • Tree Planting •

B.S. LOUISIANA TECH: SCHOOL OF FORESTRY

T_cW

Thomas C. Wyche

CERTIFIED PETROLEUM GEOLOGIST

Horizontal & Vertical Projects

E.Tx., N.La., S.Ark.

333 Texas St., Suite 703

Shreveport, LA 71101

318.465.2944

geo1tcw@gmail.com

LA-PG

AAPG-CPG

Like what you see?

Fill out and mail in this form or find it online at SGS1.org.

You can renew online instead
 of filling out this card!
★ www.sgs1.org ★

Active \$25 / yr	
Associate \$25 / yr	
Honorary \$0 / yr	
Student \$5 / yr	
Optional Donation SGS Scholarship Fund	
Optional Donation Faithful Friends	
Total Payment	

NAME (Please Print) _____

Check if new applicant or change of address.

SHREVEPORT GEOLOGICAL SOCIETY, P.O. BOX 750 • SHREVEPORT, LA 71162

DATE _____

APPLICANT OR MEMBER PLEASE TYPE OR PRINT

LAST NAME	FIRST	INITIAL	NICKNAME		
COMPANY		POSITION OR TITLE			
COMPANY MAILING ADDRESS	CITY	STATE	ZIP	COMPANY PHONE	
HOME ADDRESS	CITY	STATE	ZIP	HOME PHONE	
FAX NUMBER	E-MAIL ADDRESS			CELL PHONE	

SCHOOL	DEGREE	MAJOR	YEAR
--------	--------	-------	------

PROFESSIONAL AFFILIATIONS	AAPG <input type="checkbox"/>	GSA <input type="checkbox"/>	SEG <input type="checkbox"/>	SEPM <input type="checkbox"/>	AIME <input type="checkbox"/>	SPWLA <input type="checkbox"/>
	APGS <input type="checkbox"/>	PS <input type="checkbox"/>	AGI <input type="checkbox"/>	SIPES <input type="checkbox"/>	SPE <input type="checkbox"/>	OTHER _____

OUTLINE OF EXPERIENCE _____

SPOUSE'S NAME _____

PREFERRED MAILING ADDRESS

HOME BUSINESS

EMAIL ME THE NEWSLETTER
(no printed copy will be mailed)

QUALIFICATIONS FROM BY-LAWS

In order to be eligible for active membership, an applicant shall be engaged in the practice or teaching of geology or related sciences.

In order to be an associate member, an applicant shall be interested in geological science but not actively engaged in the practice or teaching of geology or related sciences.

TO THE EXECUTIVE BOARD:

I hereby apply for ACTIVE ASSOCIATE membership in SHREVEPORT GEOLOGICAL SOCIETY and pledge myself to abide by its Constitution and By-laws.

Date: _____ Signature: _____

SPACE BELOW TO BE USED FOR PROCESSING ONLY

Membership Committee

Received: _____

Approved for: Active
 Associate
 Student

Executive Board

Approved: _____ SECRETARY

Date: _____

SHREVEPORT GEOLOGICAL SOCIETY

Committees & Chairmanships

2019-2020

Advertising	Kurt Ley	Kingwood Exploration, LLC	918-7182
Budget	Morris Nichols	Stroud Petroleum, Inc.	425-0101
Continuing Education	NEEDED		
Employment	Cody Lenert	Marlin Exploration	222-8406
Entertainment	John Hansen	Hansen Oil Corp	861-2269
Environmental	David Williamson	ATC Group Services LLC	868-4848
Faithful Friends	Zach Gray	Ensignt Energy	429-2220
Field Trip	NEEDED		
5K Run	Mark Dunham	Sugar Creek Producing Co.	221-2899
Golf Tournament	Scott Comegys	O'Brien Energy Co	865-8568
	Cody Lenert	Marlin Exploration	222-8406
Government Affairs	Scott Stroud	Stroud Petroleum, Inc.	425-0101
Historical	Ralph Richardson	Sartor-Richardson	869-4100
Honorary Membership/Awards	David Billingsley	Independent	222-7123
Investments	Morris Nichols	Stroud Petroleum, Inc.	425-0101
Library	Ralph Richardson	Sartor-Richardson	869-4100
Maps in Schools	Matthew Chumley	Nadel and Gussman Ruston, LLC	222-0908
Membership	Sarah Wilkes	LA Dept. of Env. Quality	525-6417
Membership Directory	Sarah Wilkes	LA Dept. of Env. Quality	525-6417
Newsletter	Kevin Hill	Hill Geophysical Consulting	221-3329
Program	Matthew Chumley	Nadel and Gussman Ruston, LLC	222-0908
Publications	Annie Green	Nadel and Gussman Ruston, LLC	222-0908
Revel Mock Dig	Carrie Salinas	Virtus Environmental	518-1622
	NEEDED		
Scholarship Endowment	Alan Schlichtemier	Oden & Associates, LLC	222-2400
Scholarship Grants	Alan Schlichtemier	Oden & Associates, LLC	222-2400
Sci-Port Discovery	Zach Kelly	Milestone Energy	212-0470
Tennis Tournament	Anthony Spano	Spanoil Exploration, Inc.	221-2371
Website	Rachel Mc Nerney	Hill Geophysical Consulting	221-3329
Youth Activities	Larry Frizzell	TMR Exploration, Inc.	746-3616

AAPG Delegate

(7/1/16 -6/30/19)

Executive Assistant	Mark Dunham	Sugar Creek Producing	221-2899
SGS Auxiliary President	Annie Green	Nadel and Gussman Ruston, LLC	222-0908
	Susan Schroeder		869-2401

HONORARY MEMBERS

James D. Aimer [^]	James B. Harris [^]	Paul Todd Landes, Jr. [^]	C. Ray Scurlock
William E. Bancroft [^]	William E. Hayes [^]	W. W. Lincoln [^]	Walter H. Spears [^]
Michael W. Beckman [^]	Roy T. Hazzard [^]	William R. Meaney	William C. Spooner [^]
Orville Roger Berg	Dr. Leo Hermann [^]	Clarence L. Moody [^]	George D. Thomas [^]
B. W. Blanpied [^]	Kevin B. Hill	John T. Palmer	Arthur H. Trowbridge
Prentis L. Boatner, Jr.	Charles J. Hoke [^]	Thomas H. Philpott [^]	Henry J. Tyler [^]
Alan L. Brittain	Perry G. Holloway [^]	William M. Plaster [^]	Claude N. Valerius [^]
John Franks [^]	Walter E. Hopper [^]	Gene R. Robinson [^]	Warren B. Weeks [^]
Victor P. Grage [^]	E. B. Hutson [^]	C. Lane Sartor [^]	Percy J. Wheeler, Jr.
John C. Grunau [^]	L. Lee Kincade [^]	Erwin W. Saye [^]	B. Ross White [^]
J. Frank Harrell [^]	Joseph O. Laird [^]	Fred R. Schroeder [^]	R. M. Wilson [^]

([^] deceased)

Shreveport Geological Society

P.O. Box 750 • Shreveport, LA 71162