



Shreveport Geological Society **NEWSLETTER**

Volume 56, No. 1

September 2016

2016-2017 Board Members



See More



SGS1.ORG

President's Inaugural Address p. 1
Cretaceous Reservoirs p. 11

*Message
from*



*the
President*

It's that time of year again. The vacation is over, the kids are back in school, and another year of SGS meetings and activities is upon us. As we look forward into the fall we see many exciting and perhaps perplexing moments heading our way. As we all have heard by now, this is an election year featuring two of the most disliked presidential candidates ever. But fortunately, we have several society events between now and then that are sure to raise spirits for everyone. The Board is hard at work scheduling excellent speakers, continuing education opportunities, and community outreach activities in our tradition of advancing the geological community. Please continue to support our vocation by attending these programs and volunteering your time whenever possible.

First on the list is the SGS/ALTAPL annual golf tournament at East Ridge Country Club on September 9th. Get those team submissions and hole sponsorships in now if you haven't already! Not only is this a chance to network and foster those business relationships, it's also a darn good time! Remember we give away some really nice awards, raffles, and door prizes every year.

The first SGS luncheon and meeting of this year will be on Tuesday September 20th at 11:30 am. Our speaker will be Dr. Charles Kerans from the University of Texas in Austin. He will be discussing Cretaceous carbonate sequences and reservoir systems of the Gulf of Mexico. Plan on attending this meeting for an excellent presentation by one of the top experts in the field.

LRC **LAFAYETTE** **GEOLOGICAL** **RESEARCH** **CENTER, LLC**

201 Heymann Blvd., Suite 33 • Lafayette, LA 70503
Tel: 337-233-8197 • Fax: 337-233-8177

COVERAGE:

- Louisiana / Federal / State Offshore
- *Multi State Geo Tech Services • Completion Data
Production Data • Well Logs • Maps*

~ MEMBERSHIPS AVAILABLE ~

The Industry's Premier • Well Data Center

orders@lafayettegrc.com

CALL OR EMAIL TODAY FOR MORE INFORMATION!

This year's GCAGS annual meeting is scheduled for September 19th – 20th in Corpus Christy, TX. There will be plenty of great technical presentations and posters available to anyone who attends. Shreveport will be the host of the 2018 GCAGS annual meeting, and I am pleased to announce that Alan Brittain will be the General Chairman. Please consider volunteering for one of the many available positions to help Alan make it a great event.

We are also looking forward to the Red River Revel which will be held downtown at the Festival Plaza from October 1st through the 8th. This is one of the top community events in which the Society has a major presence. For the last several decades the SGS has delighted kids and parents alike at the Mock Dig, and this year will be no

*Mock Dig at the
Red River Revel*

Oct. 1 – 8

*Co-chair and
volunteers needed*

different. Carrie Salinas has once again volunteered to lead the charge for us, but her long-time sidekick Dawn Standridge has moved out of town and won't be here to help coordinate the delivery, set-up, and scheduling necessary to put on this event. Many of us can remember finding our first shark's tooth or piece of fool's gold at the dig, and this is the chance to bring that exciting feeling to another future geologist. If that sounds appealing to you (and it should!), please consider volunteering to co-chair this wonderful event. As always, those who call too late to nab the co-chair spot will absolutely be able to work as many shifts as they want!

As you can see, there are ample opportunities to get together with your fellow geologists in the coming months. These events do not happen in a vacuum. They require the time and resources of all the members of the society, and through your volunteerism and participation, we have an outstanding year ahead of us!

-John Stroud

WHEN IT HAS
TO BE DONE
FAST!

400 TRAVIS ST.
SUITE 1606
S'PORT, LA
71101



COMPUTER
MAPPING FOR
THE OIL & GAS
INDUSTRY.
COLOR PLOTTING
AND DIGITIZING.

JOHN
HARRELL,
OWNER
ANDY
CARDIN,
DRAFTSMAN

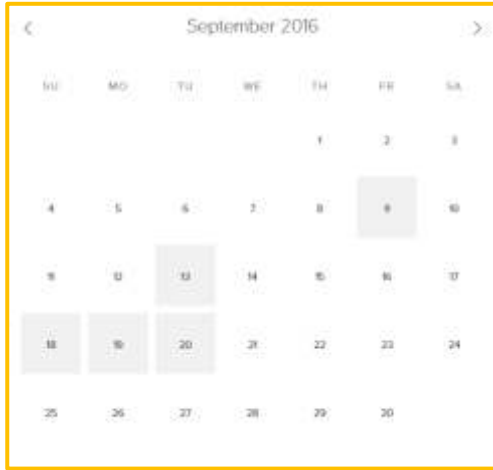
PHONE

221-7780



skrivanos
engineering, inc.

Calendar of Events



View this interactive calendar at SGS1.org

September 9

SGS-ALTAPL Annual Golf Tournament; East Ridge Country Club

September 13

Board Meeting; 11:45 a.m. - 1 p.m.; Petroleum Club 15th Floor

September 20

Monthly Meeting; 11:30 a.m. - 1 p.m.; Petroleum Club 15th Floor
Charles Kerans presents “Cretaceous Carbonate Sequences
and Reservoir Systems of the Gulf of Mexico”

September 18-20

GCAGS Annual Convention; Corpus Christi

On the Cover: 2016-2017 SGS Board members
photographed by Brenda Pender.

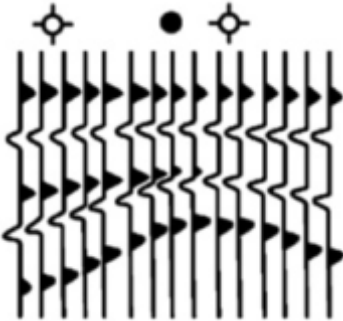
Interior Art: Page 1 “Breaking Away IV” (*detail*); Page 9 “Jupiter’s
Unveiling” (*detail*); Page 33 “Somehow Always Connected” (*detail*);
all by Christine Bailey.

Courtesy of the Norsworthy Gallery,
214 Texas St., Shreveport, LA 71101.

Online at TheNorsworthy.com.

Contact the Newsletter Editor: 1RachelHill@gmail.com

Hill Geophysical Consulting



Kevin B. Hill

*Integrating Geophysical Technology
with Geology*

**What's Under Your
Feet? Find out:
HILLGEO.COM**

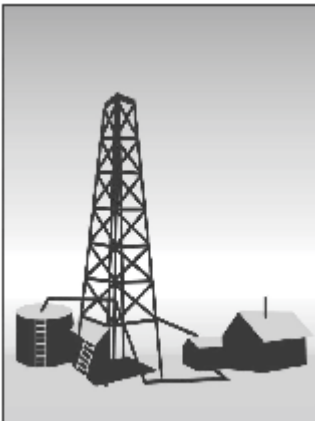


415 TEXAS ST., SUITE 200
SHREVEPORT, LA 71101

318.221.3329

kevin@hillgeo.com

CAMTERRA RESOURCES, INC.



Main Office
2615 East End Blvd. South
Marshall, Texas 75672
Telephone: (903) 938-9949
Fax: (903) 935-0521
Email: camterra@camterra.com

Chief Executive Officer:	Zach Carlile
President:	Paul Marchand
Land Manager/General Counsel:	Allen C. Stagers, Jr.
Asst. General Counsel:	Pam Johnson
Sr. Landman:	Steve Copeland
Sr. Landman:	Jason Derebery

Owning Properties in Texas, Louisiana, Arkansas, Mississippi, and New Mexico

The September Meeting

Make your **RESERVATION**

Charles Kerans

presents

“Cretaceous Carbonate Sequences and Reservoir
Systems of the Gulf of Mexico”

11:30 a.m. Tuesday, September 20

The Shreveport Petroleum Club, 15th floor

Cost: \$20, Children 10 and under \$8

We encourage members to invite guests, spouses, and
friends to any of our meetings.

If you'd like a seat, kindly **RSVP**
by **Friday, September 16** at SGS1.org,
or email or call in your reservation to

Scott Comegys

scomegys@obrienenergyco.com

318-841-2702

Name: _____

I will bring ___ guest(s): _____



Jim Hankla
Sales
Southern U.S.

115 Jordan Plaza Blvd., Suite 200
Tyler, Texas 75704
Mobile: 903-312-8500

Email: james.hankla@bakerhughes.com

www.bakerhughes.com



Joseph H. McDuff
Geologist

351 Chapel Loop
Mandeville, LA 70471

985.845.9430

jmcduff@bellsouth.net



Document Solutions

CONSTRUCTION DOCUMENT & INFORMATION MANAGEMENT SERVICES

MANAGED PRINT SERVICES

ARCHIVING & INFORMATION MANAGEMENT

GRAPHIC DESIGN SERVICES

BANNERS, YARD SIGNS, TRUCK MAGNETS, WINDOW DECALS

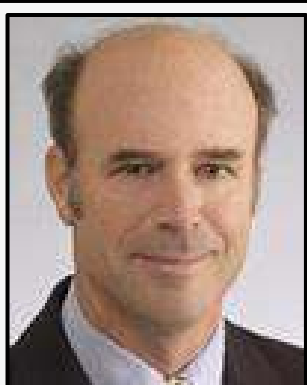
OVERSIZED SCANS, & COPIES

shreveport.production@e-arc.com

305 Market Street, Shreveport, LA 71101 | 318.221.0674 | www.e-arc.com

Charles Kerans

Biography



*PhD, Geological
Sciences, Carleton
University, Canada*

*BSc, Geology, St.
Lawrence University, NY*

Charlie Kerans is Goldhammer Chair of Carbonate Geology at the Department of Geological Sciences, and co-Principal Investigator of the Bureau of Economic Geology's Carbonate Reservoir Characterization Research Laboratory, Jackson School of Geosciences, The University of Texas at Austin. From 1985-1990 Kerans was a Research Associate and Research Scientist at the Bureau of Economic Geology, being named a Senior Research Scientist in 1992. In 2006 Kerans

took a full-time appointment at the Department of Geosciences as Goldhammer Chair and offers courses in modern and ancient carbonate deposition and diagenesis as well as sequence stratigraphy.

Kerans' areas of focus are in carbonate sequence stratigraphy and reservoir characterization, with an emphasis on integrating outcrop analog information for improved understanding of the subsurface. He has studied carbonate reservoirs in North America, Mexico, Brazil, Venezuela, and widely in the Middle East including Saudi Arabia, Oman, and Qatar. Major areas of outcrop study include the Guadalupe Mountains of West Texas and New Mexico, the Cretaceous of the southwestern U.S., Carboniferous of Wyoming/Montana, and the Devonian of northwestern Australia. Carbonate ramps, rimmed shelves, deep-water carbonates, paleokarst, and most recently fractured carbonates are major areas of research.

He has won 10 best paper/poster/oral presentation awards with co-workers and students, including two Wallace Pratt awards for best published paper in AAPG, and the Carlos Dengo award for best paper



**WILL-DRILL
RESOURCES
INCORPORATED**

**PHONE (318) 222-7464
FAX (318) 222-7466**

**416 TRAVIS, SUITE 1200
SHREVEPORT, LA 71101
OIL AND GAS EXPLORATION**

Cypress Operating, Inc.



**STEVEN A. SINGLETARY
BEN ROBINSON**

Petroleum Geologists

Office: (318) 424-2031
Fax: (318) 425-8140

330 Marshall Street, Suite 930
Shreveport, LA 71101



Marlin
EXPLORATION, L.L.C.

401 Edwards Street, Suite 1200
Shreveport, LA 71101

P.O. Box 1367
Shreveport, LA 71164

office: (318) 222-8406
fax: (318) 222-8061
email: mef@marlinexploration.com

Jon Q-Petersen
President

S. Cody Tenert
Geologist

Autie T. Orjias
V.P./Land Manager

Ryan Q-Petersen
Land

Dean Giles
Secretary/Treasurer



Strategic Speculative Surveys
Geophysical Data Marketing & Management

YOUR
Full Service
National
Seismic Data
Marketing Firm

Office Locations:
Larry Tull
Sandy Smith
Holly Howard

**DALLAS DENVER HOUSTON NEW ORLEANS
OKLAHOMA CITY TULSA CORPUS CHRISTI**

9400 N. Central Expressway, Suite 1211
Dallas, Texas 75231

214-373-1211 FAX 214-373-7068

www.seismicexchange.com

presented at the International AAPG in South Africa in 2008. He has been both a U.S. and International AAPG Distinguished Lecturer and has taught courses on carbonate sequence stratigraphy and reservoir characterization for AAPG and the industry both domestically and abroad. In 2014 Kerans was named AAPG Grover Murray Distinguished Educator. He also was received the Society of Sedimentary Geology's second highest medal, the Francis J. Pettijohn Medal, for Distinguished Contributions to Sedimentology in 2014.

Abstract

“Cretaceous Carbonate Sequences and Reservoir Systems of the Gulf of Mexico”

Cretaceous reservoirs dominate world hydrocarbon resources with the combined effect of rich source intervals (commonly combined with Tithonian source) and prolific reservoir facies. Reservoirs in the Middle East, Venezuela, and the Gulf of Mexico (GOM) add to this picture. The Greenhouse setting of the Cretaceous was marked by warm climates, minimal eustatic fluctuations and platform exposure, and sluggish oceanic circulation, which favor extensive source bed formation and widespread reservoir development. The GOM Lower Cretaceous alone provides 25% of the cumulative oil production and 15% of the natural gas for this prolific basin. Remarkable similarities exist in sequence evolution and productive facies of Middle Eastern and GOM carbonates, but major differences in diagenesis (mostly cementation) have caused these reservoirs to pale relative to their Middle Eastern counterparts.

GOM Cretaceous passive margin strata comprise 8 super-sequences ranging from earliest Cretaceous through Campanian. They are named here for their platform elements: (1) Calvin, (2) Knowles, (3) Sligo/Cupido, (4) James/Cow Creek, (5) Rodessa/Glen Rose/Ferry Lake/Sunniland/El Abra, (6) Edwards/Georgetown/Stuart City/El Abra, (7) Buda, and (8) Eagle Ford/Austin/Tokio/Eutaw. Little data are



*Great People. Great Plays.
Since 1908.*

MID-CONTINENT REGION

Mary Ellen Lutey - *V.P., General Manager*

William R. Downs - *Exploration Manager*

**6120 South Yale Ave.- Suite 1300
Tulsa, Oklahoma 74138-4210
918-488-7600
SM-Energy.com**

**R. LACY /
GRAIN ENERGY**

*Oil and Gas Investments
Exploration and Development*

**222 EAST TYLER STREET
LONGVIEW, TX 75601
903-758-8276 (O)**

Jamey Walker
*V. P. Exploration
jwalker@rlacy.com*

Chris Bresch
*Sr. Geoscientist
cbresch@rlacy.com*

Hunter Brumble
*Staff Geoscientist
hbrumble@rlacy.com*

Scott Caswell
*Sr. Geophysicist/Geoscientist
scaswell@rlacy.com*



**Address: 401 Edwards Street, Suite 1601
Shreveport, Louisiana 71101**

**Telephone: (318) 227-8668
Fax: (318) 227-9012**



*Operating in the ArkLaTex, MAFla,
and South Texas Areas*

**MUSLOW
OIL & GAS, INC.**

**333 Texas Street
Suite 2222
Shreveport, LA 71101**

Eric Weiss
President

**(318) 221-8694
Fax: (318) 227-2106**

available for the Calvin, but the remaining sequences illustrate a full spectrum of reservoir styles ranging from deepwater basinal debris fans and chalks to midshelf patch reefs and microporous tidal flats.

Barremian-Aptian Sligo-Cupido carbonates form the first circumGulf rimmed platform. Production from this trend is dominated by gas in the northern GOM. Transgression linked to oceanic anoxic event (OAE) 1a causes shutdown of Sligo carbonates and deposition of Pearsall shales. Recovery and stacking of Albian Glen Rose and Edwards/“Comanche” platforms sees a return of the first isolated patchreef formation from Arizona to Florida. Later, a well-organized reef-rimmed phase formed (which is analogous to the Sligo margin) that extended from the Campeche, around the GOM and to the Bahama-Florida megabank and beyond. Hydrocarbon production from this interval is dominated by large fields in eastern and southern Mexico (Tuxpan and Campeche), with mostly gas production coming from Albian carbonates in the U.S. GOM. The final interval of carbonate production in the Cretaceous accumulates during OAE2, with drowning of the platforms and deposition of the hemipelagic–pelagic Eagle Ford/Austin strata. Production from these intervals represents the current frontier of unconventional drilling. One of the last major frontiers in the GOM will be in the northern GOM forereef slope and basin of the AptianAlbian platforms. Issues with source, trap, and reservoir quality will have to be overcome to realize the potential in this setting, but similar carbonates are prolific in the Poza Rica trend of eastcentral Mexico.

Coming Up

<u>DATE</u>	<u>SPEAKER</u>	<u>TOPIC</u>
10/18/2016	PETER R. ROSE	Cognitive Bias, The Elephant in the Living Room of Science and Professionalism
11/15/2016	TOM GODDARD	Methane leakage and EPA new source performance standards (NSPS)

**HARGROVE
SMELLEY
STRICKLAND
&
LANGLEY**

A PROFESSIONAL LAW CORPORATION

Louise F. Pearce

Attorney at Law

Bus: (318) 429-7200

Fax: (318) 429-7201

www.hssl-law.com

Email: lpearce@hss-law.net

American Tower, Suite 600
401 Market Street
Post Office Box 59
Shreveport, Louisiana 71161-0059

TMR Exploration, Inc.

Ray Lasseigne, President
Larry Frizzell, Exploration Manager
Mack Thomas, Operations Manager
Terry Antee, Consulting Geologist

P. O. Box 5625
Bossier City, LA 71171-5625

(318) 746-3616

Fax (318) 746-6218

***SHREVEPORT
PETROLEUM DATA
ASSOCIATION, INC.***

333 Texas Street, Suite 900
Shreveport, LA 71101-3678

(318) 429-2237

FAX (318) 429-2441

No Initiation Fee

**Demetra Morgan
MANAGER**

**FDX
ENERGY**

Bill Chaney, President
(318) 226-0985

Glen Kelly, Vice President - Exploration
(318) 841-1391

David Briggs, Vice President - Land
(318) 841-1397

Ronnie Ebarb, Production Manager
(318) 841-1395

401 Edwards Street, Suite 1900
Shreveport, Louisiana 71101

SGS-ALTAPL Annual Golf Tournament

Friday, September 9, 2016



*D*ear Friends and Sponsors of the Shreveport Geological and Ark-La-Tex Landman Societies:

It's that time of the year again to announce the upcoming **SGS/ALTAPL Golf Tournament** to be held at **East Ridge Country Club** on **Friday, September 9, 2016**. The event will proceed with shotgun starts at 7:30 a.m. and 1:00 p.m. followed by an evening of food and door prizes made possible by your sponsorship donations.

With this in mind, please consider and respond as soon as possible with your much appreciated sponsorship, so a realistic budget can be proposed by our planning committee. A prompt response will also assure that your contribution will be affirmed and recognized by all in attendance. All sponsors will be included on a banner which will be displayed at check-in and at the awards reception.

Sponsorship Categories

Sponsor:	All gift amounts accepted and appreciated.
Hole Sponsor:	\$500
Tournament Hat Sponsor	\$2000
Breakfast	\$1000
Lunch Sponsor:	\$1500
Awards Dinner Sponsor:	\$2000
Tournament Shirt Sponsor	Please inquire with committee.

(continued on page 17)

Baldwin Madden Energy, LLC

*Oil and Gas Property
Acquisitions and Development*

George A. Baldwin, Jr.

Gregory K. Madden

Christopher D. Franks
Senior Geologist

Lonnie J. Shaw
Director of Accounting & Finance

(318) 429-2220

(318) 429-2229 Fax

333 Texas Street, Suite 1919
Shreveport, LA 71101-3676

Reynolds Drilling Company, Inc.

7591 Fern Ave., Suite 2001
Shreveport, Louisiana 71105-5502

Phone: (318) 227-0118

Fax: (318) 227-0171

reydrill@bellsouth.net

Terry Pat Reynolds
President

STROUD PRODUCTION, LLC

333 Texas Street, Suite 860

Shreveport, Louisiana 71101-5302

Voice: (318) 429-2260

Fax: (318) 429 2255

Email: ras@spllc.com



SPANOIL INCORPORATED

416 TRAVIS ST., SUITE 806
SHREVEPORT, LA 71101
VOICE: 9318) 221-2371
FAX: (318) 221-2372
anthony@spanoil.com

ANTHONY J. SPANO
PRESIDENT

Also, if your company has logoed merchandise which they would like to add as tee gifts please send them (~300 count) to the address listed below.

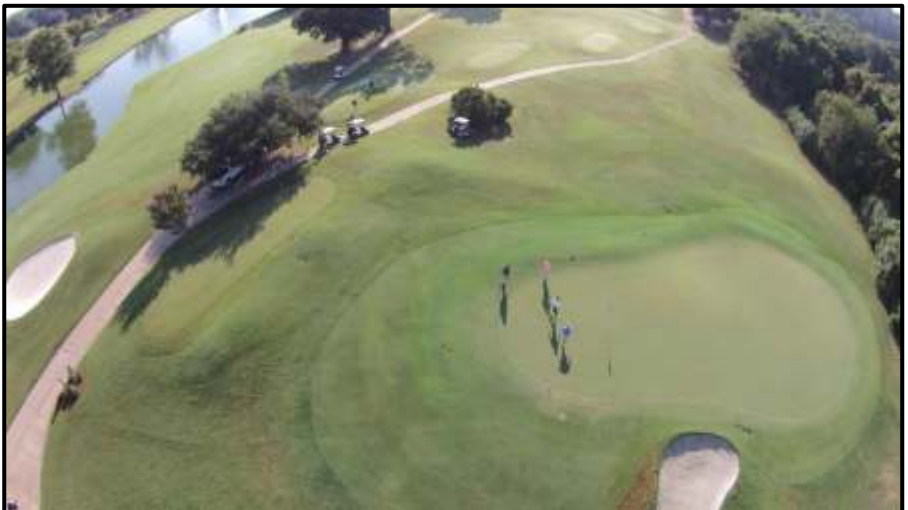
**ALTAPL/SGS Golf Tournament
c/o Zach Kelly
333 Texas Street Suite 516
Shreveport, LA, 71101**

We look forward to your involvement not only in sponsorship, but also in the camaraderie of the golf tournament. If you have any questions please call us at the numbers listed or email us at sgsaltapl@gmail.com

Sincerely,

Your 2016 Tournament Committee

Find more info, including the tournament entry form, at
SGS1.org/events





MILESTONE ENERGY, LLC

Oil & Gas Exploration and Development

Joseph A. Lott

Geologist / Managing Partner

Zach Kelly

Geologist

Thomas A. Giles

Land Manager

333 Texas Street, Suite 516
Shreveport, Louisiana 71101
jlott100@bellsouth.net

Office: 318.212.0470

Fax: 318.212.0469

- Looking for Prospects
- Geophysical Consultant
- Landmark Graphics Corp. Software
- Synthetic Seismograms, modeling and cross sections



- Digitizing capability
- 2-D & 3-D Seismic Acquisition, Processing & Interpretation
- SeisVision 2-D & 3-D interpretation and mapping software

Bobbye Ben Taylor - President

O: 120 S Broadway, Suite 102
Tyler, Texas 75702
Mobile: (903) 521-3182

H: 7130 Holly Square Court
Tyler, Texas 75703
Email: taylor@webfoxmail.com

LOOKING FOR PROSPECTS

Let me tailor your geophysical needs.

HALLIBURTON

Do you require an integrated approach to total well construction, formation evaluation, and optimized production? Make the jump to our team. We have the best local people for designing your well, performing state of the art formation evaluation, and planning and executing your completion.

Logging & Perforating
Production Enhancement (Stimulation)
Cementing
Security Bits
Tools, Packers, & TCP
Coli Tubing Services

Shreveport Sales 318-673-4400
Tyler sales 903-581-5263
Kilgore Operations 1-800-654-6926



401 Edwards Street
Suite 1400
Shreveport, LA
71101-3143
(318) 222-0517

Mock Dig 2016

October 1 - 8th

Sign up now to **play** in the dirt
and *inspire* future geologists
at this year's Red River Revel!



Co-chair and other volunteers are needed.

Please contact Carrie Salinas:
csalinas@virtusenvironmental.com



Kingwood Exploration, LLC
Oil & Gas Exploration
and Production



Kurt M. Ley

Exploration Manager & Partner

Robert E. Braswell

Engineering/Operations Manager & Partner

416 Travis St., Suite 1100
Shreveport, LA 71101

Phone: 318-946-8585
Fax: 318-946-8287

kurt.ley@kingwoodexploration.com
robert.braswell@kingwoodexploration.com



ANDERSON
OIL & GAS, INC.

Established by G.M. Anderson

333 TEXAS ST., SUITE 2020

SHREVEPORT, LA 71101-5357

Phone: (318) 227-2000

Fax: (318) 425-5935



★ Milam, TX
★ Many, LA

The Horizontal Specialists!!

We work with the greatest companies
in the world, please give us a call
to see what we can do for you!!

Joe Eidson 318-623-5077

Michael Danos 318-332-7673

P. O. Box 1209, Many, LA 71449

Security Exploration, Inc.

8509 Line Avenue
Shreveport, LA 71106



J. Stafford Comegys
President

Donna Walker
Geologist

Barbara Lyles
Office Manager

OIL & GAS EXPLORATION

Tel: (318) 222-1066

Fax: (318) 222-4932

Website Updates

Over the past few months, the Shreveport Geological Society website has been made more useful - and easier to use - for members and visitors alike. Updates to SGS1.org include:

- Expansion of the Publications Shop: More than 150 Field Studies, Field Trip Guidebooks, and Other Publications have been added.
- Streamlined membership renewal: If you are renewing, you now only have to fill out the parts of the membership form that you need updated, such as a change of address.
- Shopping cart: You can even renew your membership and buy publications in the same transaction. Simply use the “add to cart” button and keep browsing until you are ready to check out.
- Donations: Scholarship Fund and Faithful Friends donations are being accepted online. Look for the buttons on most pages of the website.

I highly recommend you try it yourself and see what SGS1.org has to offer.

As always, feedback is welcome.

- Rachel Hill

Membership

Renew 1 Item \$25

Renewing your membership to the Shreveport Geological Society is easier than ever! Simply choose your membership level below, fill out the form as necessary, and pay your dues with a credit card. Please note that information for the membership directory is taken from this form, so it is important that you fill out any changes and keep your record up-to-date. If you would prefer to renew your membership by mail with a check, please download and fill out an **application to mail** instead.

Active Membership Renewal \$25.00	Associate Membership Renewal \$25.00	Student Membership Renewal \$5.00
ADD TO CART	ADD TO CART	ADD TO CART

The annual dues cover the period of July through June. Please note that you must fill out the application form completely AND pay the membership fee in order to be considered for membership.

While you are renewing your membership, would you like to make a donation to the SGS Scholarship Fund and/or the SGS Faithful Friends? You can now do so online!

[DONATE TO THE SGS SCHOLARSHIP FUND](#) [DONATE TO THE SGS FAITHFUL FRIENDS](#)

THE PETROLEUM CLUB OF SHREVEPORT

Serving delectable cuisine to the
Shreveport Geological Society
regular luncheon meetings.

318-425-4251



**JM EXPLORATION
COMPANY, L.L.C.**

**Al Jones
David Meadows
Managers**

Mid South Tower Bldg.
416 Travis Street, Suite 1414
Shreveport, LA 71101

Phone: 318-425-7617
Fax: 318-425-1385
Email: jmexploration@comcast.net

BRAMMER ENGINEERING, INC.

Services:

- Drilling
- Completion
- Construction
- Production
- HSE
- Regulatory
- Land
- Accounting
- Risk

Management

- Information
Systems

www.brammer.com

318.429.2345 o • 318.429.2340 f

400 Texas Street • Suite 600 • Shreveport, LA 71101



WLS CORPORATION

**OIL & GAS
EXPLORATION & PRODUCTION**

Wayne L. Simpson
President

Philip Davis
Geologist

416 Travis Street, Suite 1006
Shreveport, Louisiana 71101

Office: (318) 425-2978
Fax: (318) 425-3166

Congratulations to Our Scholarship Winners!

The SGS, through the Community Foundation, gave scholarships to 10 outstanding geology students from all over the U.S. and the world that are going to school in Louisiana or Texas. Scholarships totaled \$16,000 for the 2016-17 school year. The schools involved are ULL with 4 recipients, LSU with 3, Stephen F. Austin with 2, and Centenary with 1.

Of these 10 students, 4 are completing their bachelor degrees, 5 are working on their masters and 1 is working on her PhD.

Foreign countries represented are Nigeria, China, Honduras and Trinidad.

Congratulations to the award winners and to the SGS for sponsoring this program.

- Alan Schlichtemier

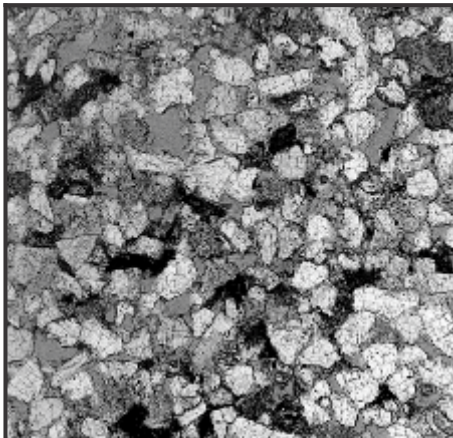
Invest in the Future

You can **donate** to the SGS Scholarship Fund through the website at SGS1.org/scholarships, or by writing a check to the SGS with "Scholarship" in the memo line. Feel free to include an "in memory of" or "in honor of" note there as well.

Mail to: Shreveport Geological Society,
P.O Box 750, Shreveport, LA 71162.



Keep in Touch
through the Shreveport Geological
Society LinkedIn Group.



Louisiana and ArkLaTex Experts

- ROUTINE AND SPECIAL CORE ANALYSIS
- PVT FLUID EVALUATION
- GEOLOGIC SERVICES

New Orleans: 504-733-6583

Lafayette: 337-837-8818

Houston: 713-328-2673

www.corelab.com



Bobby E. Jelks
President

Faith N. Gilbert
CFO

P. O. Box 7665
Shreveport, LA 71135-7665
Phone: (318) 221-2688

Edward Yarborough
Exploration Manager

Fax: (318) 459-2935

James Light
Land Manager



GEOVENTURES™

Ashley Garcia

Assistant Program Manager

Main +1 713 789 7250

Direct +1 281 781 1005

Fax +1 713 789 7201

Mobile +1 281 239 4576

ashley.garcia@iongeo.com

2105 City West Blvd., Ste. 900
Houston, TX 77042-2837 USA iongeo.com



L. CHRIS JOHNSON
Manager

2650 Fairfield Ave
Shreveport, LA 71104
BUS: (318) 222-6652
FAX: (318) 222-6673
cjohnson@jerlic.com

GRIGSBY PETROLEUM, INC.

Oil & Gas Exploration
and Production

333 Texas St., Suite 2285
Shreveport, LA 71101
Phone (318) 425-5306
Fax (318) 425-3733

Office Phone
(318) 222-7123

Residence Phone
(318) 925-2348

David L. Billingsley, Jr.
Certified Petroleum Geologist

400 Travis Street, Suite 1230
Shreveport, LA 71101
DLBJR1@aol.com

Cell Phone
(318) 426-4320



Diana L. Chance, Managing Director

P. O. Box 1346 Shreveport, LA 71164
(318) 227-2131 • Fax: (318) 222-5832

Cell: (318) 347-8848

www.donnerproperties.com

Recommended Reading

From David Williamson

The Geology of Mississippi

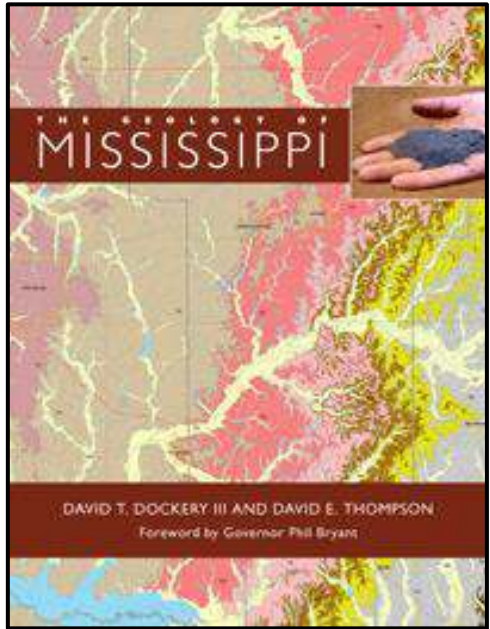
by David T. Dockery III and David E. Thompson

Foreword by Governor Phil Bryant

The Geology of Mississippi is an encyclopedic work by authors with extensive experience in Mississippi's surface geology mapping program. It brings together published work, unpublished work from agency files, and the authors' experience, both in personal field work and in collaboration with experts from around the world.

With over a thousand images, the voluminous text relates ways in which Mississippi's geology has contributed to the understanding of global events, such as the extinction of the dinosaurs and the first occurrence of tiny primates. ...

More at <http://www.upress.state.ms.us/books/1841>



Do you have a book, article, or other publication
you'd like to recommend?
Send your suggestion to 1RachelHill@gmail.com
and you could be in the next newsletter!



JON E. SAYE

PETROLEUM GEOLOGIST

Office: 318-221-4504
Fax: 318-221-4516
Cell: 318-458-1515

1015 Mid South Twr. • P. O. Box 137
Shreveport, LA 71161
jsaye@prodigy.net

COUTRET & ASSOC., INC.

Petroleum Reservoir Engineers
Property Evaluation, Reservoir Engineering
Fluid Injection, Property Management

Louisiana Tower
401 Edwards Street
Shreveport, LA 71101

Telephone: (318) 221-0482
Fax: (318) 221-3202
E-mail: rmcgowen@coutret.com



GEOVENTURES™

Alvin Rowbatham
Sales Manager

Main +1 713 789 7250
Direct +1 281 781 1005
Fax +1 713 789 7201
Mobile +1 832 372 2366
alvin.rowbatham@iongeo.com

2105 City West Blvd., Ste. 900
Houston, TX 77042-2837 USA

iongeo.com



Delta-T
Geophysical
Consulting, Inc.

Comprehensive Geophysical Services

- Kingdom Suite 2d/3d pak
- Geographix
- GMA
- Neuralog
- Mesa 3-D Design
- Digirule

Woodie Huffman, CEO

401 Edwards Street, Suite 826
Shreveport, LA 71101-5510
Phone: (318) 221-0414
Fax: (318) 425-0688
Email: delta@bellsouth.net

Williamson

OIL & GAS, INC.

Oil & Gas Development



Office: (318) 221-2923 400 Travis Street
Fax: (318) 221-3488 Suite 1410
Email: bob@williamsonogi.com Shreveport, LA 71101

PROFESSIONAL SCOUTING SERVICE

DAVID E. REISER

400 Travis St., Ste. 208 Office: 318-227-0090
Shreveport, LA 71101 Home: 318-393-8844

Cowgill & Associates, L.L.C.

Oil & Gas Exploration & Production

Stephen C. Cowgill
Geologist/Managing Partner

P. O. Box 72180 Office: 318.429.2170
Bossier City, LA 71172-2180 Fax: 318.429.1170
cowgill@suddenlink.net Cell: 318.455.9516

CSC ENERGY CORP.

OIL & GAS EXPLORATION

Joel B. Chevalier
PRESIDENT

401 Edwards Street
Suite 820
Shreveport, Louisiana 71101
Office: (318) 221-5625 • Fax: (318) 459-1650
Mobile: (318) 469-5625

Memories from the May Meeting

Photos by Brenda Pender

Joshua Rosenfeld presented “Paleocene-Eocene Drawdown and Refill of the Gulf of Mexico”. Science Fair SGS Award Winners were in attendance



Join us at the next luncheon meeting on Tuesday, Sept. 20!



The rock kit is ready (pictured left). E-mail Maps in Schools Chairman Matthew Chumley at mchumley@naguss.com to give a talk with the kit and present a geologic map to a class of future geoscientists.

BER-EX-CO., INC.

Orville Roger Berg, Ph.D.

Exploration, Exploitation
Seismic Evaluation
Domestic, International

400 Travis St., Suite 1612
Shreveport, LA 71101-3108
(318) 220-0300
orberg@bellsouth.net

9949 Beaver Creek Drive
Shreveport, LA 71106
(318) 798-1748

GERARD ASSOCIATES, L.C.

OIL & GAS EXPLORATION
DEVELOPMENT AND ACQUISITIONS

J. A. Wojtkiewicz • Charles Gerard

625 Market St., Suite 250
Shreveport, LA 71101
Tel. (318) 221-0761 • FAX (318) 221-8835

ODEN & ASSOCIATES, LLC

Oil and Gas Exploration



Alan Schlichtemier
Geologist

Email: oden@shreve.net

400 Travis St., Ste. 1301
Shreveport, LA 71101

(318) 222-2400
Fax: (318) 226-0840



Kalmbach
Production Company, LLC

Sam Kalmbach
Geologist

400 Travis Street, Ste. 516
Shreveport, LA 71101

office: (318) 424-6566
cell (318) 470-9977

e-mail: sam.geo.kpc@gmail.com

BARROW-SHAVER RESOURCES COMPANY

Oil & Gas Exploration & Development

Scott Owen Shaver

Managing Partner and Exploration Manager

903-593-5221 Office

903-593-1692 Fax

903-561-4711 Home

903-582-4711 Farm

903-245-4999 Mobile

977 Pruitt Place

Tyler, Texas 75703

sos-bsr@tyler.net



Drilling Contractor

Oil & Gas Operator

Turnkey Services

Well Service & Workover

Working Interest Participant

318-992-4111

P. O. Box 2990, Jena, LA 71342

justissoil.com

SOUTHERN MUDLOGGING, INC.



Mary Ann Norman

Office: (318) 325-3393

1-800-256-2530

P. O. Box 725

West Monroe, LA 71294

Mike Rogers Drilling Co., Inc.

Drilling & Interest Participation

MIKE ROGERS, PRESIDENT

CRAIG ROGERS, VICE PRESIDENT

Office: 870-234-2356 • Fax: 870-234-7487

1708 N. Vine Street • P. O. Box 126 • Magnolia, AR 71754
email: mrdc1981@gmail.com

In Memoriam



Joseph Oscar Laird
March 2, 1927 – April 29, 2016

Thank you for your leadership
in the field and in the
Shreveport Geological Society.

PRIDE EXPLORATION, INC.

400 Travis St., Suite 1604
Shreveport, LA 71101-3113

John Grunau, President

318-226-1300

NORTHBROOK ENERGY, LLC

Prospects for Sale
Groundfloor Opportunities
East Texas - Louisiana

PLEASE CONTACT

Michael S. Willey
VP Exploration
903-570-0936
alpine@nctv.com

David Cherry
Managing Partner
214-778-1474
dcherry@petroveninc.com

Joe R. White, Jr.
Petroleum Geologist

400 Travis Street, Ste. 909
Shreveport, LA 71101
Ofc. 318-703-2311
Cell. 318-423-9828
Hm. 318-949-3539

AAPG CPG #5580
MS RPG #0097
LA CPG #345
Jwhite1362@aol.com
Joerjrw@gmail.com

TIM H. MARSHALL DIRCK E. WUELLNER

MARSHALL-WUELLNER, INC. Petroleum Geologists

AmSouth Tower
333 Texas St., Suite 608
Shreveport, LA 71101-3671
Office: (318) 429-2250
Fax: (318) 429-2251



Weatherford

Richard 'Dick' Swindell
Technical Sales Advisor
Wireline & Borehole Seismic

Wireline Services
Weatherford International, Ltd.
1101 ESE Loop, 323, Ste. 200
Tyler, Texas 75701, USA

Direct: +1.903.594.4926
Main: +1.903.534.5243
Fax: +1.903.939.8907
Mobile: +1.903.530.4016
richard.swindell@weatherford.com
www.weatherford.com

T. W. McGuire & Associates, Inc.

Registered Petroleum Engineers

416 Travis St., Suite 1400
P. O. Box 1763
Shreveport, LA 71166
(318) 222-0761
(318) 222-0799 Fax

James T. Maranto Robert T. Maranto



Jerry W. Taylor
Consulting Geologist, LLC

17377 LAUREN DRIVE
PRAIRIEVILLE, LA 70769

1-(225)-287-8342

JWTGEOLOGY@GMAIL.COM

WWW.JWTGEOLOGY.COM

Financials Report

Shreveport Geological Society Statement of Revenue and Expenses-Income Tax Basis July 2015 through June 2016

Ordinary Income/Expense

Income

Interest 53.80

REVENUE

SGS Scholarship Fund 400.00

Christmas Party 3,793.05

Publication Royalties 1,326.68

Advertising 6,990.00

SGS Dues 4,708.18

Faithful Friends 6,325.00

Golf Tournament

SGS/ALTAPL GOLF RAFFLE 2,380.00

Entry Fees 36,315.00

Donations 18,350.00

Golf Tournament - Other 1,167.66

Total Golf Tournament 58,212.66

Meals-SGS Monthly Meetings

Wine Dinner Meeting 6,903.90

Meals-SGS Monthly Meetings - Other 3,240.00

Total Meals-SGS Monthly Meetings 10,143.90

Publications 1,734.60

Spring Fling 1,925.00

Tennis Tournament / 5K 500.00

Total REVENUE 96,059.07

Total Income 96,112.87

Expense

SGS Scholarship Fund 3,525.00

SGS PHOTOGRAPHY 150.00

EXPENSE

Scholarships Paid Out 2,500.00

Accounting 700.00

Appreciation Plaques 593.94

Bank Fees 181.40

Board Meetings 1,539.17

Christmas Party 6,744.55

Membership Dues Expenses 270.90

Faithful Friends 331.66

Golf Tournament

Profit Split 4,080.33

Scholarship Raffle Prize 596.21

CAPLIS FORESTRY, LLC
JEFFREY W. CAPLIS
-CONSULTING FORESTER-

CELL: 318-617-9016
OFFICE: 318-752-3662
586 CAPLIS SLIGO RD.
BOSSIER CITY, LA 71112

-complete forestry services-

- Timber Appraisals • Timber Management • Timber Cruising •
- Damage Appraisals • Tree Planting •

B.S. LOUISIANA TECH: SCHOOL OF FORESTRY



416 TRAVIS STREET ♦ SUITE 600
SHREVEPORT, LA 71101
PHONE ♦ (318) 425-0101
FAX ♦ (318) 425-2211

MORRIS NICHOLS
GARY ABRAMS
NICK GROVES
JOHN STROUD
GEOLOGISTS



Curt Bateman | *Geophysicist*
CurtBateman@InspirationEnergy.net

Carl E. Gray | *Geologist*
CarlGray@InspirationEnergy.net

Sarah Bedgood | *Secretary/Geotech*

903-581-5800

821 ESE Loop 323
Suite 420
Tyler, TX 75701



Craig C. Barclay
Petroleum Geologist, L.L.C.

522 Dumbarton
Shreveport, LA 71106
Phone: (318) 869-2223
Mobile: (318) 426-2536
cbarclay1@comcast.net

Financials Report

Shreveport Geological Society Statement of Revenue and Expenses-Income Tax Basis July 2015 through June 2016

East Ridge Country Club	
Golf	25,643.86
Gift Certificates	800.00
Food & Beverages	612.18
Total East Ridge Country Club	27,056.04
Door Prizes	7,817.70
Hole Signs	765.63
Mail-out, postage	1,163.21
Planning Meetings	511.58
Shirts	8,593.97
Golf Tournament - Other	347.50
Total Golf Tournament	50,932.17
Monthly SGS Membership Meeting	
Wine Dinner Meeting	
Speakers Fee	2,300.00
Wine	4,515.87
Printing Costs	129.24
Wine Dinner Meeting - Other	3,658.56
Total Wine Dinner Meeting	10,601.67
Monthly SGS Membership Meeting - Other	3,475.48
Total Monthly SGS Membership Meeting	14,077.16
Newsletter	3,234.51
Office Supplies	
Advertising	31.85
Miscellaneous Expenses	10.00
Convention Refunds	790.27
Office Supplies - Other	97.09
Total Office Supplies	929.21
Publications/Printing	
Copies, Fax, Postage	64.19
POSTAGE	155.17
Publications/Printing - Other	343.70
Total Publications/Printing	563.08
P.O. Box Rental	86.00
Safe Deposit Box Rental	45.00
Science Fair	900.00
Secretarial Services	3,000.00
Speakers Expense	2,830.21
Spring Filing	5,165.01
State Non-Profit Corp. Fee	10.00

Financials Report

Shreveport Geological Society
Statement of Revenue and Expenses-Income Tax Basis
 July 2015 through June 2016

	<u>Jul '15 - Jun 16</u>
Storage Space Rent	1,334.53
Tennis Tournament/5K Expenses	2,920.83
Web Design/Hosting	<u>2,200.00</u>
Total EXPENSE	<u>100,898.21</u>
Total Expense	<u>104,573.21</u>
Net Ordinary Income	<u>(8,460.34)</u>
Net Income	<u><u>(8,460.34)</u></u>

Shreveport Geological Society
Statement of Assets, Liabilities and Equity-Income Tax Basis
 As of June 30, 2016

	<u>Jun 30, 16</u>
ASSETS	
Current Assets	
Checking/Savings	
Regions Investment Solutions CD	118,888.09
Regions Checking	29,779.22
Geophysical Fund 2368	5,820.89
Money Market 2368	<u>5,785.82</u>
Total Checking/Savings	<u>160,053.82</u>
Total Current Assets	<u>160,053.82</u>
TOTAL ASSETS	<u><u>160,053.82</u></u>
LIABILITIES & EQUITY	
Equity	
Unrestricted Net Assets	8,371.77
Net Assets-Unrestricted	164,323.69
Net Assets-Restricted	5,818.50
Net Income	<u>(8,460.34)</u>
Total Equity	<u>160,053.82</u>
TOTAL LIABILITIES & EQUITY	<u><u>160,053.82</u></u>



LOUISIANA BOARD OF PROFESSIONAL GEOSCIENTISTS

Update on Geoscientist Licensing in Louisiana *from Bill Meaney*

There are 8 applicants sitting for the ASBOG Fundamentals of Geology exam and 6 applicants sitting for the ASBOG Practice of Geology exam on September 30, 2016. The next testing date is March 17, 2017, and the LBOPG deadline for those exams is December 31, 2016. Further information and the Proctoring/Verification Form to apply to take the exams may be found at www.lbopg.org, "Resources" tab, and then scroll down to "ASBOG Proctoring Verification Form".

Ready to track your continuing education hours?

Visit the LBOPG website today to download your continuing education log template

lbopg.org/resources/continuing-education

1	A		B	C	D	E	F	G	H	I	J	K	L
2	Name:				PG License #:			Renewal Date:					
3	Date	Code*	Activity			Instructor	Sponsor Organization		Credits				
4			Title			Name	Location	Time	CEU	PDH			
5													
6													
7													
8													
9													
10													
11													
12													
13													
14													
15													
16													
17													
18													
19													
20													
21	Total PDH claimed this renewal period:										0		
22	PDH carry over from previous year claimed for this report:												
23	Total PDH claimed to meet minimum requirements:										0		
24	PDH to be carried over to next year's report:												
25	Audits will be conducted randomly and/or as needed to confirm CE activities each year.												
26	It is your responsibility to collect and maintain proof of attendance and completion of CE activities in case an audit is called.												
27	*Code	Conversion of		PDH	Minimum hrs. to renew		Maximum hrs. Allowed/Period						
28	Participant Credit	P	Each Direct Hour =	1	14	Geoscience Credits	Society Meetings						
29	Instructor Credit	I	CEU, Papers, etc. =	10	1	Ethics Credits	Self directed Coursework						
30	Authorship Credit	A	College Qtr. Hr. =	10	15	Total	Authorship - Paper						
31	Meeting Credit	M	Semester Hour =	15			Authorship - Book						
32	Ethics Credit	E	Instructor =	3KPDH									
33	This form was intended to be a one (1) letter size page, i.e. one (1) years record of CE activity or 15 PDH.												
34	It is recommended that additional data be entered into a second (or third, etc.) worksheet in this spread sheet workbook.												
35	An entire (blank) form can then be copied into the new worksheet and the sheet tab named as the report year.												
36	This workbook has two (2) new sheets included as examples so you can start the process of recording your CE activity.												
37													
38													
39													
40	Some have begun to insert rows to increase space for excess activities. This will prevent the form from being printed on letter size paper.												
41	The entry section of the form has merged cells to accommodate spacing of the information section across the bottom of the form.												
42	Inserted rows will not have this format, however, copying a formatted row to the inserted row(s) will correct this problem.												
43	If you are audited, we will only need (and want) to see the record(s) for the audit year(s), not your entire history of CE activity.												
44	This is why we recommend you keep records on a yearly basis in separate sheets rather than an ever expanding single list.												

Like what you see? Join us.

Visit SGS1.org now to fill out this form and pay membership dues.

SHREVEPORT GEOLOGICAL SOCIETY, P.O. BOX 750 • SHREVEPORT, LA 71162

APPLICANT OR MEMBER PLEASE TYPE OR PRINT

Date: _____

LAST NAME _____ FIRST _____ INITIAL _____ NICKNAME _____

COMPANY _____ POSITION OR TITLE _____

COMPANY MAILING ADDRESS _____ CITY _____ STATE _____ ZIP CODE _____ COMPANY PHONE _____

HOME ADDRESS _____ CITY _____ STATE _____ ZIP CODE _____ HOME PHONE _____

FAX NUMBER _____ EMAIL ADDRESS _____ CELL PHONE _____

SCHOOL _____ DEGREE _____ MAJOR _____ YEAR _____

PROFESSIONAL AFFILIATIONS AAPG GSA SEG SEPM AIME SPIWLA
 APGS PS AGU SPPS SPY OTHER _____

SPOUSE'S NAME _____ PREFERRED MAILING ADDRESS
 HOME BUSINESS

OUTLINE OF EXPERIENCE: _____

 CHECK HERE IF YOU WOULD LIKE THE NEWSLETTER EMAILED

QUALIFICATIONS FROM BY-LAWS

In order to be eligible for active membership, an applicant shall be engaged in the practice or teaching of geology or related sciences.

In order to be an associate member, an applicant shall be interested in geological science but not actively engaged in the practice or teaching of geology or related sciences.

To The Executive Board:

I hereby apply for ACTIVE ASSOCIATE membership in SHREVEPORT GEOLOGICAL SOCIETY and pledge myself to abide by its Constitution and By-laws.

Date: _____ Signature: _____

SPACE BELOW TO BE USED FOR PROCESSING ONLY

Membership Committee

Received _____

Approved for: Active
 Associate
 Student

Executive Board

Approved _____

Secretary

Date

Membership fees are per year:
 Active: \$25 Associate: \$25 Student: \$5 Honorary: None
 The annual dues cover the period of July through June of the following year.

SHREVEPORT GEOLOGICAL SOCIETY

Committees and Chairmanships

2016 - 2017

Advertising	Kurt Ley	Kingwood Exploration, LLC	918-7182
Budget	Zach Kelly	Milestone Energy	212-0470
Continuing Education	Miles McDowell	Sklar Exploration	227-8668
Employment	Zach McDonald	Milestone Energy	212-0470
Entertainment	John Hansen	Hansen Oil Corp	861-2269
Environmental	David Williamson	Cardno	868-4848
Faithful Friends	Zach McDonald	Milestone Energy	212-0470
Field Trip	David Williamson	Cardno	868-4848
5K Run	Mark Dunham	Sugar Creek Producing Co.	221-2899
Golf Tournament	Zach McDonald, Chairman	Milestone Energy	212-0470
	John Stroud	Stroud Exploration Co., LLC	425-0101
Government Affairs	Scott Stroud	Stroud Exploration Co., LLC	425-0101
Historical	Ralph Richardson	Sartor-Richardson	869-4100
Honorary Membership Awards	David Billingsley, Jr.	Independent	222-7123
Investments	Zach Kelly	Milestone Energy	212-0470
Library	Ralph Richardson	Sartor-Richardson	869-4100
Maps in Schools	Matthew C. Chumley	Nadel and Gussman	220-7074
Membership	Mark Dunham	Sugar Creek Producing Co.	221-2899
Membership Directory Program	Mark Dunham	Sugar Creek Producing Co.	221-2899
Publications	Scott Comegys	O' Brien Energy Co.	865-8568
Revel Mock Dig	Demetra Morgan	Shreveport Petroleum Data , Inc.	429-2237
	Carrie Salinas Co-Chair Needed	Virtus Environmental Please Call Carrie Salinas	518-1622
Scholarship Endowment	Alan Schlichtemier	Oden & Associates, LLC	222-2400
Scholarship Grants	Alan Schlichtemier	Oden & Associates, LLC	222-2400
Sci-Port Discovery	Glen Kelly	TDX Energy LLC	222-0026
Tennis Tournament	Anthony Spano	Spanoil Exploration, Inc.	221-2371
Website - Newsletter Editor	Rachel Hill	Hill Geophysical Consulting	221-3329
Youth Activities	Larry Frizzell	TMR Exploration, Inc.	746-3616
AAPG Delegate (7/1/13-6/30/16)			
Executive Assistant	Roger Berg	BER-EX-CO., Inc.	220-0300
SGS Auxiliary President	Demetra Morgan Susan Schroeder	Shreveport Petroleum Data, Inc.	429-2237 869-2401

HONORARY MEMBERS

James D. Aimer [†]	William E. Hayes [†]	W. W. Lincoln [†]	C. Ray Scurlock
William E. Bancroft [†]	Roy T. Hazzard [†]	William R. Meaney	Walter H. Spears [†]
Michael W. Beckman [†]	Dr. Leo Hermann [†]	Clarence L. Moody [†]	William C. Spooner [†]
B. W. Blanpied [†]	Charles J. Hoke [†]	John T. Palmer	George D. Thomas [†]
Prentis L. Boatner, Jr.	Perry G. Holloway [†]	Thomas H. Philpott [†]	Arthur H. Trowbridge
John Franks [†]	Walter E. Hopper [†]	William M. Plaster [†]	Henry J. Tyler [†]
Victor P. Grage [†]	E. B. Hutson [†]	Gene R. Robinson [†]	Claude N. Valerius [†]
John C. Grunau [†]	L. Lee Kincade [†]	C. Lane Sartor [†]	Warren B. Weeks [†]
J. Frank Harrell [†]	Joseph O. Laird [†]	Erwin W. Saye [†]	Percy J. Wheeler, Jr.
James B. Harris [†]	Paul Todd Landes, Jr. [†]	Fred R. Schroeder [†]	B. Ross White [†] R. M. Wilson [†]

([†] deceased)

Shreveport Geological Society

P. O. Box 750 • Shreveport, LA 71162