



Shreveport Geological Society **NEWSLETTER**

Volume 57, No. 1

September 2017



Message from the President p. 1

Meet the Board p. 7

Quite a Crater p. 15

From the Archives p. 21

Meeting Survey p. 29

Membership Renewal Form p. 31

GCAGS 2017 Info p. 33





Another summer has gone by and another school year kicks off, to the joy of parents everywhere and to the dismay of many students. Hopefully no dismay in our society, as we prepare for another year filled with great activities, lunches and speakers. By the time you're reading this, the solar eclipse will have passed without incident, and even though you'll have to wait seven more years to see one on the North American continent, we won't get bored.

As everyone is aware, oil and gas prices have rebounded off of their post-boom lows but show no signs of wanting to break out in the near future. Every time they start to climb they fall back, and vice versa. However, there are some bright spots out there, including the export of crude oil volumes topping one million barrels per day in April and May of this year. This is all the more remarkable since such exports were prohibited until January 2016. In that short time they have ramped up dramatically and show no signs of slowing. Ditto on the natural gas side, where one LNG terminal (as in the only one) has begun operating and is ramping up quickly. The Cheniere facility in Cameron Parish has sent 156 tankers and approximately ½ TCF of domestically produced LNG to eager customers in Europe, Mexico, South America and the Middle East. Keep in mind this is with three out of a planned six trains in operation and beginning in only February of last year. There are multiple other facilities currently being built and others are at various stages in the permitting process. The EIA

*Exports
have
ramped up*

Faithful Friends 2016-2017

Atkins, Ltd., L.L.C.

Mary Barrett

BER-EX-CO., Inc.

David L. Billingsley, Jr.

Bivins Energy Corporation

Brittain Geoconsulting Services

Cypress Operating, Inc.

William Downs

Franks Exploration Company, L.L.C.

Michael Fulford

Geological Drafting Consultants

C.H.C. Gerard and Associates

Grigsby Petroleum, Inc.

Hardin International Processing, Inc.

Hill Geophysical Consulting

Lakewood Production, L.L.C.

Qiu Lu

Marlin Exploration, L.L.C.

Marston Oil Company

Zach McDonald

Milestone Energy, L.L.C.

Muslow Oil & Gas, Inc.

Oden & Associates, L.L.C.

Palmer Petroleum, Inc.

Louise F. Pearce

Sartor-Richardson, L.L.C.

Jon Saye

Alan Schlichtemier

Shaw-Laird, LLC

Shiels Engineering, Inc.

John D. Silvernail

Spanoil Incorporated

Stratagraph, Inc.

Scott Stroud

Sugar Creek Producing

Company, L.L.C.

Jamey Walker

Joe R. White, Jr.

David Williamson

To be a Faithful Friend for 2017-2018, please contact Zach Kelly.

Invest in the Future

You can **donate** to the SGS Scholarship Fund online at SGS1.org or by writing a check to the SGS with "Scholarship" in the memo line, and you may include an **"in memory of"** or **"in honor of"** note as well.

Mail to: Shreveport Geological Society,
P.O. Box 750, Shreveport, LA 71162.

forecasts that the USA could provide three TCF of gas to the planet on an annual basis in as little as four years.

Back to the SGS calendar. First up will be the annual golf tournament at East Ridge Country club on Friday, September 8. Thus far we have had great support from sponsors and team signups, but if you forgot to sign up by the deadline there may still be a place for you, so don't be afraid you missed it. Next up will be the Red River Revel, which occurs this year between September 30 and October 7. This annual event is fun for the whole family, and the Mock Dig is a favorite attraction of young rock hounds from all over the Ark-La-Tex. It is a great way to enjoy the Revel and be directly involved with the society. Volunteer signup sheets will be available on the website and at the monthly lunch, so please take the time to participate this year if you haven't in a while. Carrie Salinas can always use some extra help, so please reach out to her if you'd like to be more directly involved.

*Mock Dig
September 30 –
October 7*

Our first lunch meeting will feature Dr. Gary Kinsland of ULL, who will be discussing his research on the Chicxulub impact crater on the Yucatan peninsula. If this feature sounds familiar, then you should recall it is the impact which is believed to have sent the dinosaurs into the annals of history, thereby clearing the way for our rodent ancestors to emerge from their holes and dominate the planet. I know Dr. Kinsland from my time at ULL and know that it should be a lively and lengthy discussion. Lewis Billingsley will be handling the program this year, so please reach out to him if you have any ideas or would like to give a talk. I know there is interest in the society of seeing more of our own members present their work. Please remember to attend the lunches as these are the main social and

*Lunch Meeting
September 19:
The Chicxulub Crater
See page*

L³RC **LAFAYETTE** **GEOLOGICAL** **RESEARCH** **CENTER, LLC**

201 Heymann Blvd., Suite 33 • Lafayette, LA 70503
Tel: 337-233-8197 • Fax: 337-233-8177

COVERAGE:

Louisiana / Federal / State Offshore
• Multi State Geo Tech Services • Completion Data
Production Data • Well Logs • Maps

~ MEMBERSHIPS AVAILABLE ~

The Industry's Premier • Well Data Center

orders@lafayettegrc.com

CALL OR EMAIL TODAY FOR MORE INFORMATION!

educational components of the society and the best way for all of us to interact.

The annual GCAGS meeting will be held this year in San Antonio from November 1-3. The technical program is out and is good as always. Next year, Shreveport will be hosting, and we will likely be needing volunteers for that effort. We will keep you posted to any developments there.

In response to requests from the membership, we will be putting out a new directory with photos in January 2018. In order to facilitate this, you will need to have your photo taken by the third week of October. Mrs. Brenda Pender will be present at the September and October luncheons to take your photo on location, or you can go by SPDA any time between now and then and she will take care of you. If you already have a photo you like, then you can submit it to Brenda via email for her files.

*Get Your
Membership
Directory Photo
Taken Soon*

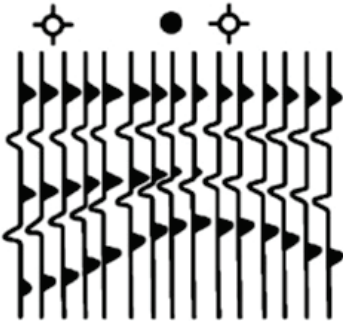
On behalf of the board, we look forward to serving you this year, and ask that you join us in welcoming the new board members who are beginning their three-year terms. Please make sure to say thanks if you get a chance, and feel free to reach out to any of us should you need anything. We look forward to another active and successful year.

Scott Comegys



The rock kit is ready
(pictured left).
E-mail Maps in Schools Chairman
Matthew Chumley at
mchumley@naguss.com
to give a talk with the kit and
present a geologic map to a class
of future geoscientists.

Hill Geophysical Consulting



Kevin B. Hill

*Integrating Geophysical Technology
with Geology*

**What's Under Your
Feet? Find out:
HILLGEO.COM**



415 TEXAS ST., SUITE 200
SHREVEPORT, LA 71101

318.221.3329
kevin@hillgeo.com



Camterra Resources

Main Office

2615 East End Blvd South
Marshall, TX, 75672
Telephone: (903) 938-9949
Fax: (903) 935-0521

Dallas Office

100 Crescent Court
Suite 1800
Dallas, TX, 75201
Telephone: (214) 310-0514

www.camterra.com

Chief Executive Officer:	Zach Carlile
President:	Paul Marchand
Exploration Manager:	Daniel Sevier
Director of Operations and Engineering:	Jim Larkin
Law Manager/ General Counsel:	Allen C. Staggars, Jr.
Asst. General Counsel:	Pam Johnson
Sr. Landman:	Steve Copeland
Sr. Landman:	Jason Derebery

Seeking Opportunities in Texas, Louisiana, Arkansas, Mississippi, and New Mexico

Meet The Board



President

Scott Comegys moved back to Shreveport from Houston four years ago and has been working for O'Brien Energy for two and a half years as a geologist. He is currently serving his third year on the SGS board. He enjoys hunting and traveling when time permits and keeps busy helping to raise three lovely daughters.



First Vice President

Zach Kelly is a geologist at Milestone Energy. Currently serving as the Shreveport Geological Society's First Vice President, he oversees the SGS Faithful Friends Program. He graduated from LSU and enjoys watching sports.



Second Vice President

Lewis Billingsley has worked as a Geologist for Justiss Oil Company for the last 5 years. He graduated from the University of Arkansas in Fayetteville. He currently serves as Second VP of the Shreveport Geological Society and is excited to bring you a year of engaging speakers. In his spare time, Lewis enjoys traveling, hunting, and mountaineering.



Treasurer

Qiu Lu has been working as a geologist at O'Brien Energy Company since 2006 and a member of the Shreveport Geologist Society (SGS) for over ten years. She currently serves as SGS treasurer and is happy to get more involved.

WHEN IT HAS
TO BE DONE
FAST!

400 TRAVIS ST.
SUITE 1606
S'PORT, LA
71101



COMPUTER
MAPPING FOR
THE OIL & GAS
INDUSTRY.
COLOR PLOTTING
AND DIGITIZING.

JOHN
HARRELL,
OWNER
ANDY
CARDIN,
DRAFTSMAN

PHONE

221-7780



skrivanos
engineering, inc.

Meet The Board

(continued)



Secretary

David Ray Williamson is a graduate of Millsaps College and has worked as Senior Geologist and Project Manager with ATC Group Services, LLC in Shreveport since 2009. He is a Registered Professional Geologist/Geoscientist in Arkansas, Louisiana, Mississippi and Texas. He serves as the Shreveport Geological Society's Secretary for 2017-2018 and has previously served as Treasurer and Board Member. David is a cave explorer, collector of geological maps and mining publications and enjoys travel with his wife, Kathy, daughter, Laurel, and son, Matthew.



Board Member

David Billingsley, Jr. has been actively exploring for oil and gas in the Ark-La-Tex area since 1982. He has had the pleasure of serving on the Board of the Shreveport Geological Society three separate terms and has held every office, including President 2009-2010. David is also a rancher, raising registered Angus cattle. He and his wife Becky have two grown children, Lewis and Mary Anna.



Board Member

Cody Lenert has worked for Marlin Exploration for eleven years. He is honored to be on the board and helping in any capacity needed. Cody enjoys spending time with his wife and 2 boys and his favorite hobbies are duck hunting and fishing for redfish & speckled trout.



Jim Hankla
Sales
Southern U.S.

115 Jordan Plaza Blvd., Suite 200
Tyler, Texas 75704
Mobile: 903-312-8500

Email: james.hankla@bakerhughes.com

www.bakerhughes.com



Joseph H. McDuff
Geologist

351 Chapel Loop
Mandeville, LA 70471

985.845.9430

jmcduff@bellsouth.net



Document Solutions

CONSTRUCTION DOCUMENT & INFORMATION MANAGEMENT SERVICES

MANAGED PRINT SERVICES

ARCHIVING & INFORMATION MANAGEMENT

GRAPHIC DESIGN SERVICES

BANNERS, YARD SIGNS, TRUCK MAGNETS, WINDOW DECALS

OVERSIZED SCANS, & COPIES

shreveport.production@e-arc.com

305 Market Street, Shreveport, LA 71101 | 318.221.0674 | www.e-arc.com

Meet The Board

(continued)



Board Member

Zach Gray is nine years into his career as a petroleum geologist. He has previously worked for Forest Oil in Denver and Chief Oil and Gas in Dallas and is currently working for Ensign IV Energy here in Shreveport. He is proud to serve on the SGS board and looks forward to the coming year.



Board Member

Morris P. Nichols has been employed at Stroud Exploration Company for 18 years. He has served previous terms on the boards of the Shreveport Geological Society, the Shreveport Map Association as well as the Shreveport Petroleum Data Association. Morris's hobbies include Golf, Tennis and Hunting.



Executive Assistant to the Board

Annie Green has been a geotech for Nadel and Gussman Ruston for two years. Prior to that, she was a geotech at Tensas Delta/TDX Energy for 11 years. She serves as the Shreveport Geological Society's Executive Assistant and Publication Committee Chairman. Annie enjoys outdoor adventures with her husband and three sons.

Join our group on

LinkedIn

Keep in Touch

through the Shreveport Geological
Society LinkedIn Group.



**WILL-DRILL
RESOURCES
INCORPORATED**

**PHONE (318) 222-7464
FAX (318) 222-7466**

**416 TRAVIS, SUITE 1200
SHREVEPORT, LA 71101
OIL AND GAS EXPLORATION**

Cypress Operating, Inc.



**STEVEN A. SINGLETARY
BEN ROBINSON**
Petroleum Geologists

Office: (318) 424-2031
Fax: (318) 425-8140

330 Marshall Street, Suite 930
Shreveport, LA 71101



Marlin
EXPLORATION, L.L.C.

401 Edwards Street, Suite 1200
Shreveport, LA 71101

P.O. Box 1367
Shreveport, LA 71164

office: (318) 222-8406
fax: (318) 222-6061
email: mei@marlinexploration.com

Jon Q=Petersen
President

S. Cody Lenert
Geologist

Autie T. Orjias
V.P./Land Manager

Ryan Q=Petersen
Land

Dean Giles
Secretary/Treasurer



Seismic Exchange, Inc.

Strategic Speculative Surveys
Geophysical Data Marketing & Management

YOUR
Full Service
National
Seismic Data
Marketing Firm

Dallas Contacts:
Larry Tull
Sandi Smith
Holly Dorward

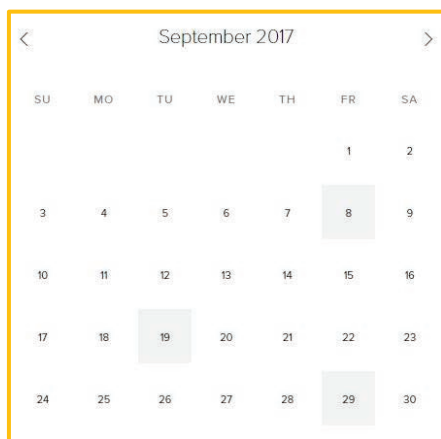
**DALLAS DENVER HOUSTON NEW ORLEANS
OKLAHOMA CITY TULSA CORPUS CHRISTI**

9400 N. Central Expressway, Suite 1211
Dallas, Texas 75231

214-373-1212 FAX 214-373-1208

www.seismicexchange.com

Calendar of Events



View this interactive calendar at SGS1.org

September 8

Annual Golf Tournament
East Ridge Country Club

September 19

Monthly Meeting
11:30 a.m. - 1 p.m.
Petroleum Club 15th Floor
Gary L. Kinsland presents “The Chicxulub Crater”

September 29

GCAGS 2017 Early Bird Registration Deadline
This year’s GCAGS Convention is in San Antonio, TX, November 1-3.

On the Cover: Your 2017-2018 Shreveport Geological Society Board.
Group and individual board photos by Brenda Pender.

Interior Art: Page 1 “Summer Storm” (*detail*) by Jerry Wray.
Page 15 “Sitting on the Moon” (*detail*) by Christine Bailey,
courtesy of the Norsworthy Gallery,
214 Texas St., Shreveport, LA 71101.
Online at TheNorsworthy.com.

Contact the Newsletter Editor: 1RachelMcNerney@gmail.com



*Great People. Great Plays.
Since 1908.*

MID-CONTINENT REGION

6120 South Yale Ave.- Suite 1300
Tulsa, Oklahoma 74136-4210
918-488-7600
SM-Energy.com

**R. LACY /
GRAIN ENERGY**

*Oil and Gas Investments
Exploration and Development*

222 EAST TYLER STREET
LONGVIEW, TX 75601
903-758-8276 (O)

Chris Bresch
*V. P. Exploration
cbresch@rlacy.com*

Hunter Brumble
*Staff Geoscientist
hbrumble@rlacy.com*

Scott Caswell
*Sr. Geophysicist/Geoscientist
scaswell@rlacy.com*



Address: 401 Edwards Street, Suite 1601
Shreveport, Louisiana 71101

Telephone: (318) 227-8668
Fax: (318) 227-9012



*Operating in the ArkLaTex, MAFla,
and South Texas Areas*

**MUSLOW
OIL & GAS, INC.**

333 Texas Street
Suite 2222
Shreveport, LA 71101

Eric Weiss
President

(318) 221-8694
Fax: (318) 227-2106

The September Meeting

Make your
RESERVATION

Gary L. Kinsland, Ph.D.

presents

“The Chicxulub Crater”

11:30 a.m. Tuesday, September 19

The Petroleum Club of Shreveport, 15th floor

Cost: \$20, Children 10 and under \$8

We encourage members to invite guests, spouses, and friends to any of our meetings.

If you'd like a seat, kindly **RSVP**
by **Friday, September 15** at SGS1.org,
or email or call in your reservation to

Lewis Billingsley

lbillingsley@justissoil.com

318-992-7763

Name: _____

I will bring ___ guest(s): _____

HARGROVE SMELLEY & STRICKLAND

A PROFESSIONAL LAW CORPORATION

Louise F. Pearce
Attorney at Law

Bus: (318) 429-7200
Fax: (318) 429-7201
www.hssl-law.com
Email: lpearce@hss-law.net

American Tower, Suite 600
401 Market Street
Post Office Box 59
Shreveport, Louisiana 71161-0059

TMR Exploration, Inc.

Ray Lasseigne, President
Larry Frizzell, Exploration Manager
Mack Thomas, Operations Manager
Terry Antee, Consulting Geologist

P. O. Box 5625
Bossier City, LA 71171-5625

(318) 746-3616

Fax (318) 746-6218

SHREVEPORT PETROLEUM DATA ASSOCIATION, INC.

333 Texas Street, Suite 900
Shreveport, LA 71101-3678

(318) 429-2237
FAX (318) 429-2441

No Initiation Fee
Cindy Shepherd
MANAGER



Curt Bateman | *Geophysicist*
CurtBateman@InspirationEnergy.net

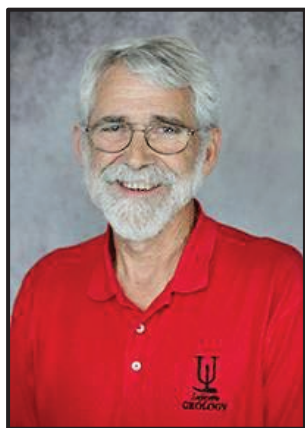
Carl E. Gray | *Geologist*
CarlGray@InspirationEnergy.net

Sarah Bedgood | *Secretary/Geotech*

903-581-5800

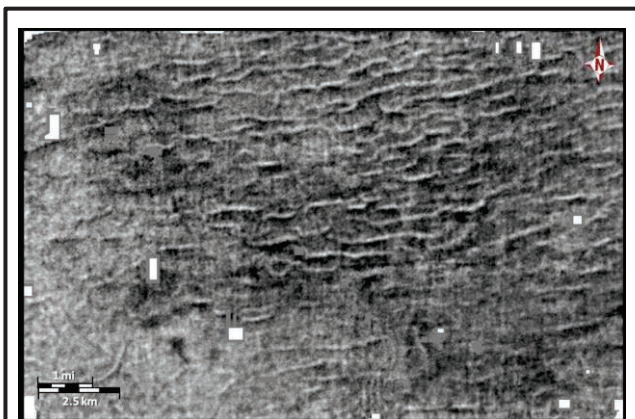
821 ESE Loop 323
Suite 420
Tyler, TX 75701

Gary L. Kinsland



Gary was born in Eugene, Oregon 6/10/47 and grew up in southwestern Oregon. He graduated from Coquille High School in 1965. From 1965 until 1969 he attended the University of Rochester (U of R) in Rochester, N.Y. and received his B.S. in Physics. The next fall he entered the Geology program at the U of R and received an M.S. in 1971 and a Ph.D. in 1974 pursuing studies in high-pressure earth mantle mineral phases and strengths. After two years as a post-doc at U of R Gary took a visiting assistant professor job at Arizona State University for the 1976 -77 year where he learned and taught exploration geophysics. In the fall of 1977 he accepted a position at, then, USL in Lafayette, LA as a mineralogist/geophysicist. He has remained at the University of Louisiana at Lafayette, no longer teaches mineralogy, but has concentrated on geophysical research.

For several years he led a research effort dedicated to the development of the coalbed natural gas resources of northern Louisiana. Since 1994 he has pursued research related to the Chicxulub Impact Structure on the



Amplitude map of a stratal slice just slightly above the positive peak reflection event that represents the top of the Cretaceous interval within the seismic data. Ripple like features can be viewed in plan view. These lineations do not correlate to faulting. (From Egedahl, 2012)

Baldwin Madden Energy, LLC

*Oil and Gas Property
Acquisitions and Development*

George A. Baldwin, Jr.

Gregory K. Madden

Christopher D. Franks
Senior Geologist

Lonnie J. Shaw
Director of Accounting & Finance

(318) 429-2220

(318) 429-2229 Fax

333 Texas Street, Suite 1919
Shreveport, LA 71101-3676

Reynolds Drilling Company, Inc.

7591 Fern Ave., Suite 2001
Shreveport, Louisiana 71105-5502

Phone: (318) 227-0118

Fax: (318) 227-0171

reydrill@bellsouth.net

Terry Pat Reynolds
President

STROUD PRODUCTION, LLC

333 Texas Street, Suite 860

Shreveport, Louisiana 71101-5302

Voice: (318) 429-2260

Fax: (318) 429 2255

Email: ras@spllc.com



SPANOIL INCORPORATED

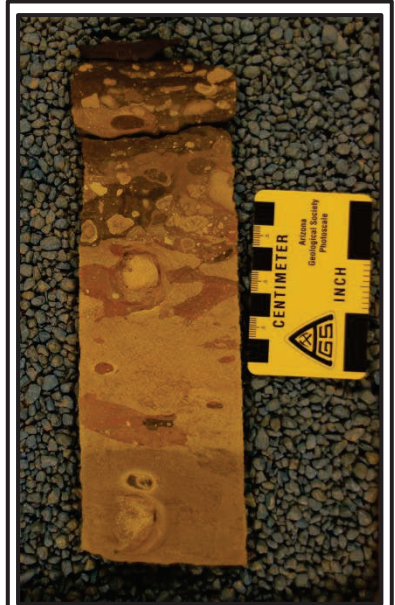
416 TRAVIS ST., SUITE 806
SHREVEPORT, LA 71101
VOICE: (318) 221-2371
FAX: (318) 221-2372
anthony@spanoil.com

ANTHONY J. SPANO
PRESIDENT

Yucatan Peninsula of Mexico. He has collected and interpreted geophysical and topographic data over the feature and more recently has found geophysical and subsurface evidence of the effects of the Impact in the subsurface of northern Louisiana. He is now a full professor holding the Pioneer Production Endowed Professorship in Geology and Petroleum Engineering.

Abstract “The Chicxulub Crater”

The Chicxulub Impact Structure is a leading candidate for the cause of the extinction at the Cretaceous/Paleogene (K/Pg) boundary. This structure is located on the northwestern corner of the Yucatan Peninsula in the state of Yucatan in Mexico. The crater is filled and buried by Tertiary carbonates so that surface evidence of the 180 km diameter, 3 km deep crater which resulted from the impact is very sparse. Images of gravity and topographic data I have collected and/or compiled show the size and form of the buried crater. Having the history of researching Chicxulub allowed me to recognize impact caused tsunami “ripples” in northern Louisiana 3D seismic data. Justiss Oil granted me access to a core across the K/Pg. I will present some of my research in Mexico, will illustrate the effects of the impact in northern Louisiana with seismic data, well-log data and core data and will demonstrate the extent of the impact effects with published maps of the K/Pg Boundary Deposit.



K/Pg boundary from Justiss Oil Company, Inc. LA Central IPNH No. 2 Well-Olla Field LaSalle Parish, Louisiana. From the dark “sliver” at the top, upwards for over 600 ft. the lithology is the Midway Shale.



MILESTONE ENERGY, LLC

Oil & Gas Exploration and Development

Joseph A. Lott

Geologist / Managing Partner

Zach Kelly
Geologist

Zach McDonald
Geologist

Thomas A. Giles
Land Manager

333 Texas Street, Suite 516
Shreveport, Louisiana 71101
jlott100@bellsouth.net

Office: 318.212.0470
Fax: 318.212.0469

- Looking for Prospects
- Geophysical Consultant
- Landmark Graphics Corp. Software
- Synthetic Seismograms, modeling and cross sections



- Digitizing capability
- 2-D & 3-D Seismic Acquisition, Processing & Interpretation
- SeisVision 2-D & 3-D interpretation and mapping software

Bobbye Ben Taylor - President

O: 120 S Broadway, Suite 102
Tyler, Texas 75702
Mobile: (903) 521-3182

H: 7130 Holly Square Court
Tyler, Texas 75703
Email: taylor@webfoxmail.com

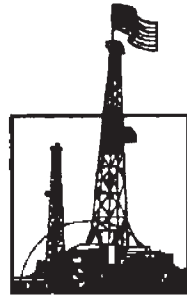
LOOKING FOR PROSPECTS
Let me tailor your geophysical needs.

HALLIBURTON

Do you require an integrated approach to total well construction, formation evaluation, and optimized production? Make the jump to our team. We have the best local people for designing your well, performing state of the art formation evaluation, and planning and executing your completion.

Logging & Perforating
Production Enhancement (Stimulation)
Cementing
Security Bits
Tools, Packers, & TCP
Coli Tubing Services

Shreveport Sales 318-673-4400
Tyler sales 903-581-5263
Kilgore Operations 1-800-654-6926



PALMER
PETROLEUM
INCORPORATED

330 Marshall Street
Suite 1200
Shreveport, LA
71101
(318) 222-0517

From the Archives

By Annie Green

The time of year has come to become a Faithful Friend of the Shreveport Geological Society. In years past, donations received from Faithful Friends were allocated to fund the social hour prior to meetings. Today, we use those funds to offset speaker costs for member meetings.

In honor of this longstanding tradition, I would like to remind you of our Faithful Friends from 50 years ago. The photo here comes from a publication dated May 1967.

Got a question or idea for "From the Archives"? Email Annie Green at agreen@naguss.com.

FAITHFUL FRIENDS

The members of the Shreveport Geological Society express their cordial and sincere appreciation to the following sponsors of our Social Hour:

Baroid Div. National Lead Co.
Bell Core Laboratories
Halliburton Co.
Greer's
Coran, Inc.
Dowell Div. of the Dow Chem. Co.
Schlumberger Well Sur. Corp.
Magcobar Mud Co.
McCullough Tool Co.
Lane Wells Co.
Southern Mud Logging, Inc.
Pan Geo Atlas Corp.
Milwhite Mud Sales
L. L. Ridgway Co.
Christensen Diamond Products Co.
Trainer Surveys, Inc.
Core Laboratories
Hycalog, Inc.
Irish Engineering Service
Cassity, Inc.
Johnston Testers
Analog (Tyler, Texas)

Kingwood Exploration, LLC
Oil & Gas Exploration
and Production



Kurt M. Ley

Exploration Manager & Partner

Robert E. Braswell

Engineering/Operations Manager & Partner

416 Travis St., Suite 1100
Shreveport, LA 71101

Phone: 318-946-8585
Fax: 318-946-8287

kurt.ley@kingwoodexploration.com
robert.braswell@kingwoodexploration.com



ANDERSON
OIL & GAS, INC.

Established by G.M. Anderson

333 TEXAS ST., SUITE 2020

SHREVEPORT, LA 71101-5357

Phone: (318) 227-2000

Fax: (318) 425-5935



★ Milam, TX
★ Many, LA

The Horizontal Specialists!!

We work with the greatest companies
in the world, please give us a call
to see what we can do for you!!

Joe Eidson 318-623-5077

Michael Danos 318-332-7673

P. O. Box 1209, Many, LA 71449

Security Exploration, Inc.

8509 Line Avenue
Shreveport, LA 71106



J. Stafford Comegys
President

Donna Walker
Geologist

Barbara Lyles
Office Manager

OIL & GAS EXPLORATION

Tel: (318) 222-1066

Fax: (318) 222-4932

Attention SGS Members:

The Shreveport Geological Society is putting together a photo Membership Directory for the 2018 year. A vast majority of the membership will be pictured in it, so now is your chance to advertise your company or services in the directory with a full page, half page, or quarter page advertisement. It will be several years before another Picture Directory is compiled, so it will really be a bargain to advertise in this directory. The SGS members keep these books on their desks and refer to them often, especially when they can see the members' pictures. So now is your chance to advertise and help your society to cover the costs for this endeavor. Deadline for getting your advertisement in is December 1, 2017. Thank you for your consideration.

*Morris P. Nichols,
SGS Membership Directory Committee*

Please complete the appropriate information:

Name: _____

Address: _____

Email Address: _____

Advertisements are available in the following sizes (Please check the desired one):

Full Page Ad - \$550 _____

Half Page Ad - \$300 _____

Quarter Page Ad - \$170 _____

_____ I would like my ad to appear as in this year's Newsletter.

_____ I have enclosed my ad format.

Please return this form along with your payment payable to
Shreveport Geological Society to:

Morris P. Nichols

Attn: SGS Photo Directory

416 Travis Street, Suite 600

Shreveport, LA 71101

THE PETROLEUM CLUB OF SHREVEPORT

Serving delectable cuisine to the
Shreveport Geological Society
regular luncheon meetings.

318-425-4251



**JM EXPLORATION
COMPANY, L.L.C.**

**Al Jones
David Meadows
Managers**

Mid South Tower Bldg.
416 Travis Street, Suite 1414
Shreveport, LA 71101

Phone: 318-425-7617

Fax: 318-425-1385

Email: jmexploration@comcast.net

BRAMMER ENGINEERING, INC.

Services:

- Drilling
- Completion
- Construction
- Production
- HSE
- Regulatory
- Land
- Accounting
- Risk

Management

- Information
Systems

www.brammer.com

318.429.2345 o • 318.429.2340 f

400 Texas Street • Suite 600 • Shreveport, LA 71101



WLS CORPORATION

**OIL & GAS
EXPLORATION & PRODUCTION**

**Wayne L. Simpson
President**

**Philip Davis
Geologist**

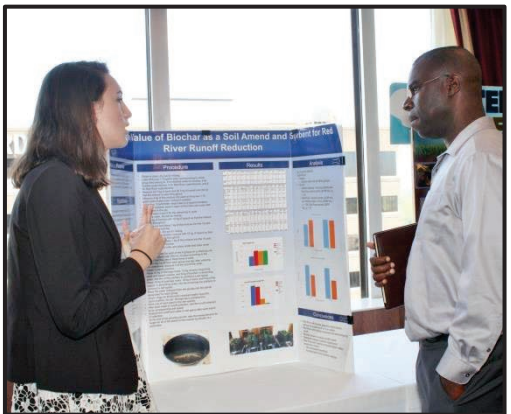
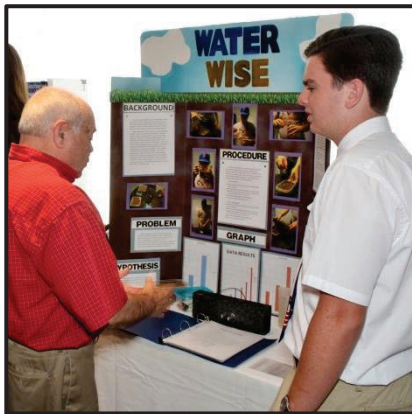
416 Travis Street, Suite 1006
Shreveport, Louisiana 71101

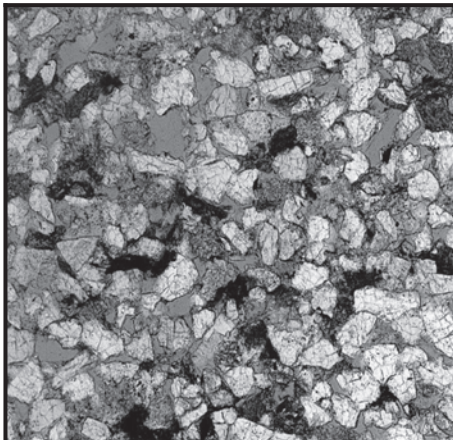
Office: (318) 425-2978

Fax: (318) 425-3166

Looking Back

The Shreveport Geological Society welcomed science fair winners and their families to the May meeting, where Randy Keller presented “Microseismicity in OK vs. Microseismicity Risks in LA”. Alan Brittain, Roger Berg, and Kevin Hill were also officially inducted as Honorary Members of the SGS. To see more photos, visit sgs1.org/members-area.





Louisiana and ArkLaTex Experts

- ROUTINE AND SPECIAL CORE ANALYSIS
- PVT FLUID EVALUATION
- GEOLOGIC SERVICES

New Orleans: 504-733-6583

Lafayette: 337-837-8616

Houston: 713-328-2673

www.corelab.com



Bobby E. Jelks
President

Faith N. Gilbert
CFO

P. O. Box 7665
Shreveport, LA 71135-7665
Phone: (318) 221-2688

Edward Yarborough
Exploration Manager

Fax: (318) 459-2935

James Light
Land Manager



GEOVENTURES™

Ashley Garcia

Assistant Program Manager

Main +1 713 789 7250

Direct +1 281 781 1005

Fax +1 713 789 7201

Mobile +1 281 239 4576

ashley.garcia@iongeo.com

2105 City West Blvd., Ste. 900
Houston, TX 77042-2837 USA iongeo.com



L. CHRIS JOHNSON
Manager

2650 Fairfield Ave
Shreveport, LA 71104
BUS: (318) 222-6652
FAX: (318) 222-6673
cjohnson@jerlic.com

GRIGSBY PETROLEUM, INC.

Oil & Gas Exploration
and Production

333 Texas St., Suite 2285
Shreveport, LA 71101
Phone (318) 425-5306
Fax (318) 425-3733

Office Phone
(318) 222-7123

Residence Phone
(318) 925-2348

David L. Billingsley, Jr.
Certified Petroleum Geologist

400 Travis Street, Suite 1230
Shreveport, LA 71101
DLBJR1@aol.com

Cell Phone
(318) 426-4320



Diana L. Chance, Managing Director

P. O. Box 1346 Shreveport, LA 71164
(318) 227-2131 • Fax: (318) 222-5832

Cell: (318) 347-8848

www.donnerproperties.com



LOUISIANA BOARD OF PROFESSIONAL GEOSCIENTISTS

Update on Geoscientist Licensing in Louisiana

Louisiana Board of Professional Geoscientists Announces New Online Payment Portal

As a convenience to applicants and licensees, the Louisiana Board of Professional Geoscientists (LBOPG) now offers an online payment option for its licensees and applicants. The option allows payment for license applications, Geoscientist-In-Training (GIT) certifications, license renewals, and a variety of other services. A nominal convenience fee will be added to the base cost of the service fee.

The option was created to be simple, easy, and quick. Visit the website at LBOPG.org, select the top tab labeled “Pay Online,” and follow the steps. For additional information contact Brenda Macon at apply@lbopg.org or 225-505-3766.

HOME ABOUT APPLY FOR LICENSE **PAY ONLINE** RESOURCES CONTACT BOARD MEMBERS

LOUISIANA BOARD OF PROFESSIONAL GEOSCIENTISTS

LBOGP FEES Shopping cart is empty.

APPLICATION FEES

Professional Geoscientist (PG) License - Application Fee	\$200.00	ADD TO CART
Geoscientist-in-Training (GIT) Certificate - Application Fee	\$100.00	ADD TO CART
Temporary 90-day PG License - Application Fee	\$200.00	ADD TO CART

RENEWAL FEES



JON E. SAYE

PETROLEUM GEOLOGIST

Office: 318-221-4504
Fax: 318-221-4516
Cell: 318-458-1515

1015 Mid South Twr. • P. O. Box 137
Shreveport, LA 71161
jsaye@prodigy.net

COUTRET & ASSOC., INC.

Petroleum Reservoir Engineers
Property Evaluation, Reservoir Engineering
Fluid Injection, Property Management

Louisiana Tower
401 Edwards Street
Shreveport, LA 71101

Telephone: (318) 221-0482
Fax: (318) 221-3202
E-mail: rmcgowen@coutret.com



GEOVENTURES™

Alvin Rowbatham
Sales Manager

Main +1 713 789 7250
Direct +1 281 781 1005
Fax +1 713 789 7201
Mobile +1 832 372 2366
alvin.rowbatham@iongeo.com

2105 City West Blvd., Ste. 900
Houston, TX 77042-2837 USA iongeo.com



Delta-T
Geophysical
Consulting, Inc.

Comprehensive Geophysical Services

- Kingdom Suite 2d/3d pak
- Geographix
- GMA
- Neuralog
- Mesa 3-D Design
- Digirule

Woodie Huffman, CEO

401 Edwards Street, Suite 826
Shreveport, LA 71101-5510
Phone: (318) 221-0414
Fax: (318) 425-0688
Email: delta@bellsouth.net

Williamson

OIL & GAS, INC.

Oil & Gas Development



Office: (318) 221-2923 400 Travis Street
Fax: (318) 221-3488 Suite 1410
Email: bob@williamsonogi.com Shreveport, LA 71101

PROFESSIONAL SCOUTING SERVICE

DAVID E. REISER

400 Travis St., Ste. 208 Office: 318-227-0090
Shreveport, LA 71101 Home: 318-393-8844

Cowgill & Associates, L.L.C.

Oil & Gas Exploration & Production

Stephen C. Cowgill
Geologist/Managing Partner

P. O. Box 72180 Office: 318.429.2170
Bossier City, LA 71172-2180 Fax: 318.429.1170
cowgill@suddenlink.net Cell: 318.455.9516

CSC ENERGY CORP.

OIL & GAS EXPLORATION

Joel B. Chevalier
PRESIDENT

401 Edwards Street
Suite 820
Shreveport, Louisiana 71101
Office: (318) 221-5625 • Fax: (318) 459-1650
Mobile: (318) 469-5625

SGS Meeting Survey

What topics and/or speakers are you interested in seeing at the Shreveport Geological Society's monthly meetings?

Topics (please check all that apply)

- Aeolian Processes
- Carbonates
- Current Plays
- Economics
- Environmental
- Ethics
- Geophysics
- National Parks
- Petrophysics
- Planetary Geology
- Production Technology
- Regional Structure
- Stratigraphy
- Other: _____

Speakers (please check all that apply)

- Dan Buller
- Martin Cassidy
- John Castagna
- John Jacobi
- Scott Tinker
- SGS Honorary Members
- SGS Past Presidents
- Other: _____

Any additional comments?

Tear out this page and mail it to the Shreveport Geological Society,
P.O. Box 750, Shreveport, LA 71162. OR take the survey online at
goo.gl/gpU6Y6

BER-EX-CO., INC.

Orville Roger Berg, Ph.D.

Exploration, Exploitation
Seismic Evaluation
Domestic, International

400 Travis St., Suite 1612
Shreveport, LA 71101-3108
(318) 220-0300
orberg@bellsouth.net

9949 Beaver Creek Drive
Shreveport, LA 71106
(318) 798-1748

GERARD ASSOCIATES, L.C.

OIL & GAS EXPLORATION
DEVELOPMENT AND ACQUISITIONS

J. A. Wojtkiewicz • Charles Gerard

625 Market St., Suite 250
Shreveport, LA 71101
Tel. (318) 221-0761 • FAX (318) 221-8835

ODEN & ASSOCIATES, LLC

Oil and Gas Exploration



Alan Schlichtemier
Geologist

Email: oden@shreve.net

400 Travis St., Ste. 1301
Shreveport, LA 71101

(318) 222-2400
Fax: (318) 226-0840



Kalmbach
Production Company, LLC

Sam Kalmbach
Geologist

400 Travis Street, Ste. 516
Shreveport, LA 71101

office: (318) 424-6566
cell (318) 470-9977

e-mail: sam.geo.kpc@gmail.com

BARROW-SHAVER RESOURCES COMPANY

Oil & Gas Exploration & Development

Scott Owen Shaver

Managing Partner and Exploration Manager

903-593-5221 Office

903-593-1692 Fax

903-561-4711 Home

903-582-4711 Farm

903-245-4999 Mobile

977 Pruitt Place

Tyler, Texas 75703

sos-bsr@tyler.net



Drilling Contractor

Oil & Gas Operator

Turnkey Services

Well Service & Workover

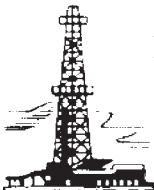
Working Interest Participant

318-992-4111

P. O. Box 2990, Jena, LA 71342

justissoil.com

SOUTHERN MUDLOGGING, INC.



Mary Ann Norman

Office: (318) 325-3393

1-800-256-2530

P. O. Box 725

West Monroe, LA 71294

Mike Rogers Drilling Co., Inc.

Drilling & Interest Participation

MIKE ROGERS, PRESIDENT

CRAIG ROGERS, VICE PRESIDENT

Office: 870-234-2356 • Fax: 870-234-7487

1708 N. Vine Street • P. O. Box 126 • Magnolia, AR 71754
email: mrdc1981@gmail.com

Like what you see? Join us.

Fill out and mail in this form or find it online at SGS1.org

**COMPLETELY FILL OUT THE INFORMATION CARD INCLUDING A VALID E-MAIL ADDRESS
RETURN IT WITH YOUR DUES PAYMENT BY OCTOBER 31, 2017**

**You can renew online instead
of filling out this card!**
★ www.sgs1.org ★

Active \$25 / yr	
Associate \$25 / yr	
Honorary \$0 / yr	
Student \$5 / yr	
Optional Donation SGS Scholarship Fund	
Optional Donation Faithful Friends	
Total Payment	

NAME (Please Print) _____

Check if new applicant or change of address.

SHREVEPORT GEOLOGICAL SOCIETY, P.O. BOX 750 • SHREVEPORT, LA 71162

DATE _____

APPLICANT OR MEMBER PLEASE TYPE OR PRINT

LAST NAME FIRST INITIAL NICKNAME

COMPANY

COMPANY MAILING ADDRESS CITY STATE ZIP COMPANY PHONE

HOME ADDRESS CITY STATE ZIP HOME PHONE

FAX NUMBER E-MAIL ADDRESS CELL PHONE

SCHOOL	DEGREE	MAJOR	YEAR
_____	_____	_____	_____
_____	_____	_____	_____

PROFESSIONAL AFFILIATIONS AAPG APGS GSA PS SEG AGI SEPM SIPES AIME SPE SPWLA OTHER

OUTLINE OF EXPERIENCE _____

SPOUSE'S NAME _____

PREFERRED MAILING ADDRESS
 HOME BUSINESS
 EMAIL ME THE NEWSLETTER
(no printed copy will be mailed)

QUALIFICATIONS FROM BY-LAWS

In order to be eligible for active membership, an applicant shall be engaged in the practice or teaching of geology or related sciences.

In order to be an associate member, an applicant shall be interested in geological science but not actively engaged in the practice or teaching of geology or related sciences.

TO THE EXECUTIVE BOARD:

I hereby apply for ACTIVE ASSOCIATE membership in SHREVEPORT GEOLOGICAL SOCIETY and pledge myself to abide by its Constitution and By-laws.

Date: _____ Signature: _____

SPACE BELOW TO BE USED FOR PROCESSING ONLY

Membership Committee

Received: _____

Approved for: Active
 Associate
 Student

Executive Board

Approved: _____

SECRETARY

Date: _____



Craig C. Barclay
Petroleum Geologist, L.L.C.

522 Dumbarton
Shreveport, LA 71106

Phone: (318) 869-2223
Mobile: (318) 426-2536
cbarclay1@comcast.net

NORTHBROOK **ENERGY, LLC**

**Prospects for Sale
Groundfloor Opportunities
East Texas - Louisiana**

PLEASE CONTACT

Michael S. Willey
VP Exploration
903-570-0936
alpine@nctv.com

David Cherry
Managing Partner
214-778-1474
dcherry@petroveninc.com

Joe R. White, Jr.
Petroleum Geologist

8505 Dogwood Trail
Haughton, LA 71037
Cell. 318-423-9828
Hm. 318-949-3539
Available for Consulting

AAPG CPG #5580
MS RPG #0097
LA CPG #345
Jwhite1362@aol.com
Joerjrw@gmail.com

TIM H. MARSHALL DIRCK E. WUELLNER

MARSHALL-WUELLNER, INC.
Petroleum Geologists

AmSouth Tower
333 Texas St., Suite 608
Shreveport, LA 71101-3671
Office: (318) 429-2250
Fax: (318) 429-2251

Wireline Services

Weatherford International, Ltd.
1101 ESE Loop, 323, Ste. 200
Tyler, Texas 75701, USA



Weatherford

Richard 'Dick' Swindell
Technical Sales Advisor
Wireline & Borehole Seismic

Direct: +1.903.594.4926
Main: +1.903.534.5243
Fax: +1.903.939.8907
Mobile: +1.903.530.4016
richard.swindell@weatherford.com
www.weatherford.com

T. W. McGuire & Associates, Inc.

Registered Petroleum Engineers

416 Travis St., Suite 1400
P. O. Box 1763
Shreveport, LA 71166
(318) 222-0761
(318) 222-0799 Fax

James T. Maranto Robert T. Maranto



Jerry W. Taylor
Consulting Geologist, LLC

17377 LAUREN DRIVE
PRAIRIEVILLE, LA 70769

1-(225)-287-8342

JWTGEOLOGY@GMAIL.COM

WWW.JWTGEOLOGY.COM

Join us in San Antonio!

Discover San Antonio's Vibrant Downtown

**GCAGS-GCSSEPM
2017
CONVENTION**



**SAN ANTONIO, TEXAS
NOVEMBER 1-3**

Hosted by the South Texas Geological Society

ACCOMMODATIONS

Marriott Rivercenter Hotel

101 Bowie St., San Antonio, TX 78205
(210) 223-1000

Visit www.gcags2017.org/Accommodations/Accommodations
to reserve a discounted room

*Registrants with Marriott Rivercenter reservations will be entered into a raffle to
win a Kindle E-Reader and dinner for two on the Riverwalk!*

*For more information and sponsorship opportunities visit
www.GCAGS2017.org*

CAPLIS FORESTRY, LLC
JEFFREY W. CAPLIS
-CONSULTING FORESTER-

CELL: 318-617-9016
OFFICE: 318-752-3662
586 CAPLIS SLIGO RD.
BOSSIER CITY, LA 71112

-complete forestry services-

- Timber Appraisals • Timber Management • Timber Cruising •
- Damage Appraisals • Tree Planting •

B.S. LOUISIANA TECH: SCHOOL OF FORESTRY



416 TRAVIS STREET ♦ SUITE 600
SHREVEPORT, LA 71101
PHONE ♦ (318) 425-0101
FAX ♦ (318) 425-2211

MORRIS NICHOLS
GARY ABRAMS
JOHN STROUD
GEOLOGISTS



GeoGraphix®

www.lmkr.com



Mark Mixon
Account Manager

mmixon@lmkr.com
P: +1 281 495 5657
D: +1 281 848 3310
C: +1 713 419 8918
F: +1 281 879 0135

LMK Resources Inc.
6051 North Course Drive, Suite 300,
Houston, TX 77072, USA

GCAGS-GCSSEPM

2017

CONVENTION

SAN ANTONIO, TEXAS

November 1-3

Hosted by the South Texas Geological Society

TECHNICAL SESSIONS

Deep Water Symposium

*Basin Evolution and Drivers of Deep Water Sedimentation
Reservoir Architecture and Reservoir Quality from Outcrops to
Producing Fields*

Innovative Methods and Techniques

Petroleum Systems

Austin Chalk and Eagle Ford Formations

Resource Play Evaluation - Eagle Ford

Cretaceous Carbonate Reservoirs: Austin Chalk,

Edwards, Buda and Georgetown

Gulf Coast Fields and Reservoirs

Jurassic Gulf Coast Fields and Reservoirs

Water Resources and Gulf Coast Sedimentology

Water Resource Protection

Gulf Coast Sedimentology

Reservoirs and Field Analogs

Gulf Coast Fields and Analogs from Other Plays

Workflow in Conventional and Unconventional Reservoirs

*Geophysical, Classification and Management Processes for the
Geologist*

**See www.gcags2017.org for the full schedule
and titles of oral and poster presentations.**

REGISTRATION

\$325 GCAGS/GCSSEPM Professional Early Bird (By Sept. 29)

\$375 Non-Member Professional Early Bird (By Sept. 29)

\$400 GCAGS/GCSSEPM Professional On-Site (After Sept. 29)

\$450 Non-Member Professional On-Site (After Sept. 29)

\$45 Student (Id Required On-Site)

\$45 Student Volunteer (Free Once Approved As Volunteer)

\$80 Spouse / Guest

\$90 Exhibit Hall Pass or Exhibit Booth Worker

\$75 Icebreaker Only

**GCAGS-GCSSEPM
2017
CONVENTION
SAN ANTONIO, TEXAS**

November 1-3

Hosted by the South Texas Geological Society

SHORT COURSES

**3D Seismic Attributes for Prospect Identification
and Reservoir Characterization**

In this 2-day short course, you will gain an intuitive understanding of the kinds of seismic features that can be identified by 3D seismic attributes, the sensitivity of seismic attributes to seismic acquisition and processing, and how 'independent' seismic attributes can be coupled through geology. Instructor Kurt Marfurt: Tues.-Wed., Oct. 31-Nov. 1

Integrated Exploration Methods for Clastic Depositional Systems

This 2-day course is designed to provide participants with a modern appreciation of the full spectrum of deep-water depositional systems and their petroleum reservoirs in the context of oil and gas exploration and appraisal. The course examines sediment transport and deposition, stratigraphic architecture, and predictive reservoir characteristics in a variety of basins using hands-on lectures, core-log-seismic exercises, and collaborative discussions.

Instructor Jon Rotzien: Tues.-Wed., Oct. 31-Nov. 1

Log Analysis for Unconventional Reservoirs

This is a 1-day short course on log analysis of unconventional reservoirs. It will cover basic characteristics and mineralogy of unconventional reservoirs; estimation of Total Organic Carbon (TOC wt.%) from well logs; log analysis of organic rich, gas-bearing and oil-bearing mudstones using both conventional logs and newer advanced logging technologies including geomechanical properties, NMR and dielectric logs. Instructor George Asquith: Wed., Nov. 1

Introduction to Seismic Interpretation: STUDENTS ONLY

This is a 2-day short course that introduces participants to seismic interpretation as applied in the petroleum industry. Lectures, hands-on exercises and discussions focus on the tools and concepts used by interpreters to derive structural and stratigraphic information from 2D and 3D seismic data. Topics include the principles of the seismic method, data acquisition and processing, interpretation tools and workflows, and how all of these factors affect structural and stratigraphic interpretations. Instructors Carl Fiduk & Bruce Hart: Sat.-Sun., Nov. 4-5

GCAGS-GCSSEPM

2017

CONVENTION

SAN ANTONIO, TEXAS

November 1-3

Hosted by the South Texas Geological Society

SHORT COURSES (continued)

Ethics for Geologists (Includes Breakfast)

This is a 1-hour collaborative/interactive lecture to satisfy the Texas Board of Professional Geoscientists ethics credit requirement. Participants must bring a text capable phone to interactively participate in the lecture. Instructor John Jordan: Fri., Nov. 3

A Recruiter's Insights to Resumes and Interviews

This is a 1/2-day short course for students and professional geoscientists looking for a job in the petroleum industry. The course covers choosing a major to a graduate school, identifying job opportunities of interest, writing a resume, and interviewing. Topics include, what should and shouldn't be in your resume, what to do and what not to do in an interview from a straightforward practical perspective, and provides attendees with several insights to what employers and recruiters are looking for. Although the course is designed for folks looking towards a geoscience career in industry, simple pointers that anyone can use for nearly any job are offered.

Instructor David Weinburg: Fri., Nov. 3

SPECIAL EVENTS

South Texas Geological Society Golf Tournament

Wed., Nov. 1

All Convention Luncheon: Speaker, Dr. William Fisher

Thurs., Nov. 2

Geo-Oktoberfest at Beethoven Maennerchor und Garten

Thurs., Nov. 2

Women in Geosciences Breakfast: Speaker, Kimberly Corley

Fri., Nov. 3

GCSSEPM Luncheon: Speaker, Dr. Maria Mutti

Fri., Nov. 3

AAPG DPA Luncheon: Speaker, Dr. Thomas Ewing

Fri., Nov. 3

Two Spouse and Guest Tours of San Antonio

Thurs., Nov. 2 & Fri., Nov. 3

Convention Icebreaker

Wed., Nov. 1

**GCAGS-GCSSEPM
2017
CONVENTION**

SAN ANTONIO, TEXAS

November 1-3

Hosted by the South Texas Geological Society

FIELD TRIPS

**Canyon Lake Gorge: Cretaceous Glen Rose
(Wed., Nov. 1)**

The "Canyon Lake Gorge" Field Trip will provide access to excellent exposures of the Cretaceous Glen Rose Formation at the recently (2002) exposed area below the Spillway at Canyon Lake. It will feature the Stratigraphic, Structural, and Aquifer Characteristics of this exposure.

Trip Leader: Lyle Baie, David Ferrill & Tom Fett

**Upper Cretaceous Sands of the Eagle Pass Area
(Fri.-Sat., Nov. 3 & 4)**

The "Upper Cretaceous Sands of the Eagle Pass Area" Field Trip will provide a detailed look at the Upper Cretaceous Sands, including the Escondido, Olmos and San Miguel. Along the way we will look at the Austin Chalk and the Anacacho Lime, as well as Igneous ("Serpentine") Intrusions in the area.

Trip Leader: Dr. Thomas Ewing & Tom Fett

**Austin Chalk and Eagle Ford Shale in San Antonio
(Sat., Nov. 4)**

The "Austin Chalk and Eagle Ford Shale in San Antonio" Field Trip will provide a good look at the full Austin Chalk section in the San Antonio area, with several newly examined outcrops. It will include nicely exposed underlying Austin Chalk contacts with the Eagle Ford Shale and an overlying contact with the Taylor Formation. The trip will see nearly 500' of beautifully exposed, easily accessible Buda Lime / Eagle Ford Shale / Austin Chalk.

Trip Leader: John Cooper

For further information: Contact Tom Fett at
MedinaLake@msn.com or at 210 289-7128.

**Visit
GCAGS2017.org
for more information and to register!**

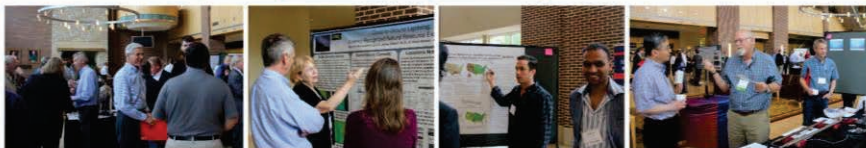
POWER PLAYS™

DRILLING INTO GEOTHERMAL ENERGY APPLICATIONS

#SMUPowerPlays

January 10-11, 2018

SMU Campus, Dallas, TX



Conference

Power Plays: Drilling into Geothermal Energy Applications
Southern Methodist University campus, Dallas, Texas
January 10-11, 2018

Power Plays will advance the understanding of geothermal resources, providing you with insights into developing this clean energy reserve. Join others with expertise in field operations, project development, technology, finance, engineering and resource assessment from the geothermal, oil & gas, and renewable energy sectors to explore economic solutions for geothermal energy at the 2018 SMU Power Plays conference.

Call for Abstracts

You are invited to submit an abstract for a poster or oral presentation at the 2018 SMU Power Plays conference. Abstracts are due by **Friday October 13, 2017**. Topics include:

- Reservoirs: exploration, enhancement and productivity
- Drilling and Downhole Advancements: oil & gas laterals, geothermal hydroshearing
- Engineering Techniques: heat extraction, technology
- Novel Applications: deep direct use for utilities or buildings, micro to macro generation
- Case Studies and Planned Project Discussions: approaches, challenges, solutions

Event Details

Name: Power Plays: Drilling into Geothermal Energy Applications
Date: Networking Reception and Poster Session January 10; Conference January 11, 2018
Location: SMU Campus, Dallas, Texas
Website: <http://www.smu.edu/Dedman/Academics/Programs/GeothermalLab/Conference>
Social Media: [Twitter](#) | [Facebook](#) | #SMUPowerPlays
Contact: Maria Richards, mrichard@smu.edu, 214-768-1975

Please share this information with others you know who may be interested. We look forward to learning about your research, demonstration project, or innovative idea!



SMU | GEOTHERMAL
LABORATORY



SHREVEPORT GEOLOGICAL SOCIETY

Committees and Chairmanships

2017 - 2018

Advertising	Kurt Ley	Kingwood Exploration, LLC	918-7182
Budget	Qiu Lu	O'Brien Energy Co	865-8568
Continuing Education	Miles McDowell	Sklar Exploration	227-8668
Employment	Cody Lenert	Marlin Exploration	222-8406
Entertainment	John Hansen	Hansen Oil Corp	861-2269
Environmental	David Williamson	ATC Group Services, LLC	868-4848
Faithful Friends	Zach Kelly	Milestone Energy	212-0470
Field Trip			
5K Run	Mark Dunham	Sugar Creek Producing Co.	221-2899
Golf Tournament	Scott Comegys	O'Brien Energy Co	865-8568
	Cody Lenert	Marlin Exploration	222-8406
Government Affairs	Scott Stroud	Stroud Exploration Co., LLC	425-0101
Historical	Ralph Richardson	Sartor-Richardson	869-4100
Honorary Membership/ Awards	David Billingsley, Jr.	Independent	222-7123
Investments	Qiu Lu	O'Brien Energy Co	865-8568
Library	Ralph Richardson	Sartor-Richardson	869-4100
Maps in Schools	Matthew C. Chumley	Nadel and Gussman	222-0908
Membership	David Williamson	ATC Group Services LLC	868-4848
Membership Directory	David Williamson	ATC Group Services LLC	868-4848
Program	Lewis Billingsley	Justiss Oil	992-7763
Publications	Annie Green	Nadel and Gussman Ruston	222-0908
Revel Mock Dig	Carrie Salinas	Virtus Environmental	518-1622
Scholarship Endowment	Alan Schlichtemier	Oden & Associates, LLC	222-2400
Scholarship Grants	Alan Schlichtemier	Oden & Associates, LLC	222-2400
Sci-Port Discovery	Zach Kelly	Milestone Energy	222-0026
Tennis Tournament	Anthony Spano	Spanoil Exploration, Inc.	221-2371
Website - Newsletter Editor	Rachel McNerney	Hill Geophysical Consulting	221-3329
Youth Activities	Larry Frizzell	TMR Exploration, Inc.	746-3616
AAPG Delegate (7/1/16-6/30/19)			
Executive Assistant	Mark Dunham	Sugar Creek Producing Co.	221-2899
SGS Auxiliary President	Annie Green	Nadel and Gussman Ruston	222-0908
	Susan Schroeder		869-2401

HONORARY MEMBERS

James D. Aimer [†]	James B. Harris [†]	Paul Todd Landes, Jr. [†]	C. Ray Scurlock
William E. Bancroft [†]	William E. Hayes [†]	W. W. Lincoln [†]	Walter H. Spears [†]
Michael W. Beckman [†]	Roy T. Hazzard [†]	William R. Meaney	William C. Spooner [†]
Orville Roger Berg	Dr. Leo Hermann [†]	Clarence L. Moody [†]	George D. Thomas [†]
B. W. Blanpied [†]	Kevin Hill	John T. Palmer	Arthur H. Trowbridge
Prentis L. Boatner, Jr.	Charles J. Hoke [†]	Thomas H. Philpott [†]	Henry J. Tyler [†]
Alan L. Brittain	Perry G. Holloway [†]	William M. Plaster [†]	Claude N. Valerius [†]
John Franks [†]	Walter E. Hopper [†]	Gene R. Robinson [†]	Warren B. Weeks [†]
Victor P. Grage [†]	E. B. Hutson [†]	C. Lane Sartor [†]	Percy J. Wheeler, Jr.
John C. Grunau [†]	L. Lee Kincade [†]	Erwin W. Saye [†]	B. Ross White [†]
J. Frank Harrell [†]	Joseph O. Laird [†]	Fred R. Schroeder [†]	R. M. Wilson [†]

(† deceased)

Shreveport Geological Society

P. O. Box 750 • Shreveport, LA 71162

PRSRV STD
U.S. POSTAGE

PAID

SHREVEPORT, LA
PERMIT NO. 719